



INNOVATIONS 25.3

Take into account that this document is only a summary of the most relevant information of this new version. For further information, please visit Jaltest Report.

BRANDS AND MODELS

Some of the new models and brands in Jaltest are listed below.

This version includes **AICHI**, **AMEISE**, **BAUMANN**, **MAXIMAL**, **NCT**, **NIFTYLIFT** and **SINOBOOM** brands.

In addition, the number of models in the following brands has increased: **CATERPILLAR** (WP Series, C Series and DP Series families), **EP** (RPL Series and ICE Series families), **HYSTER** (P Series and H Series families), **MISTUBISHI** (PW Series, FB Series and FD Series families) and **YALE** (MP and GP families).

DIAGNOSTICS AND SYSTEMS

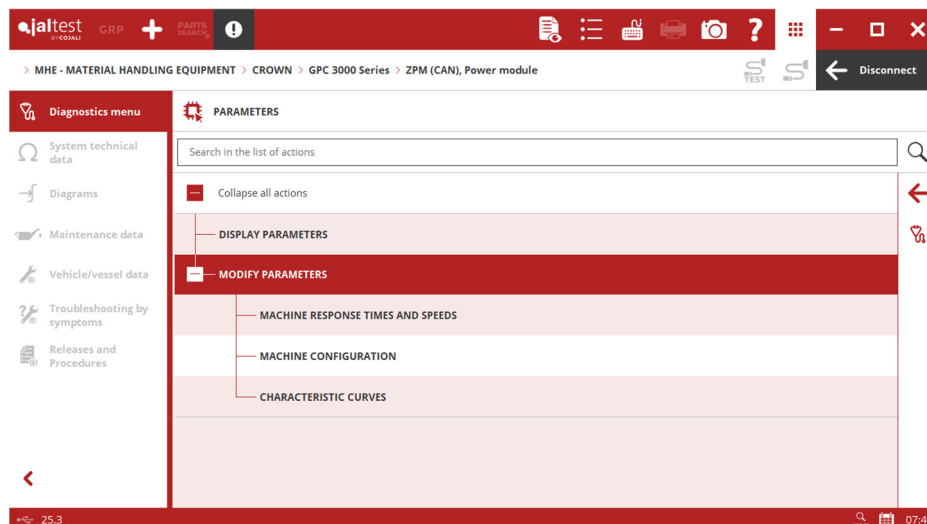
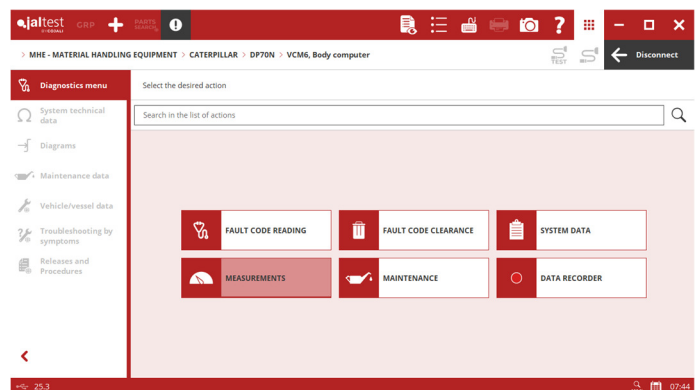
CATERPILLAR

⊕ **VCM6** and **VCM** central computer for **WP Series** electric pallet jacks that include functions such as the maintenance reset.

VMC1 and **VCM4** central computers for forklifts with combustion engines, maintenance reset.

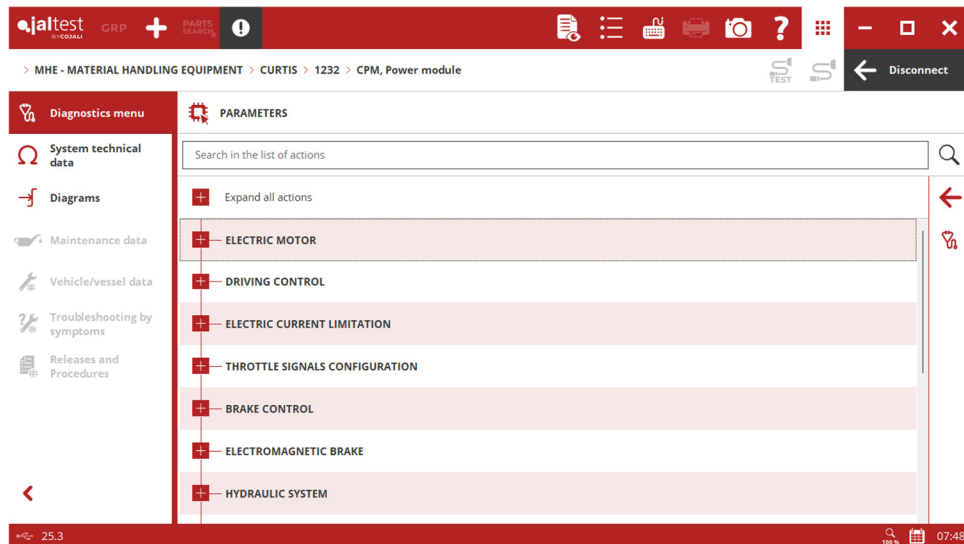
CROWN

ZPM (CAN) power module for pallet jacks, stackers, order-picking pallet trucks, retractable forklifts and electric counterbalance forklifts, parameter configurations.



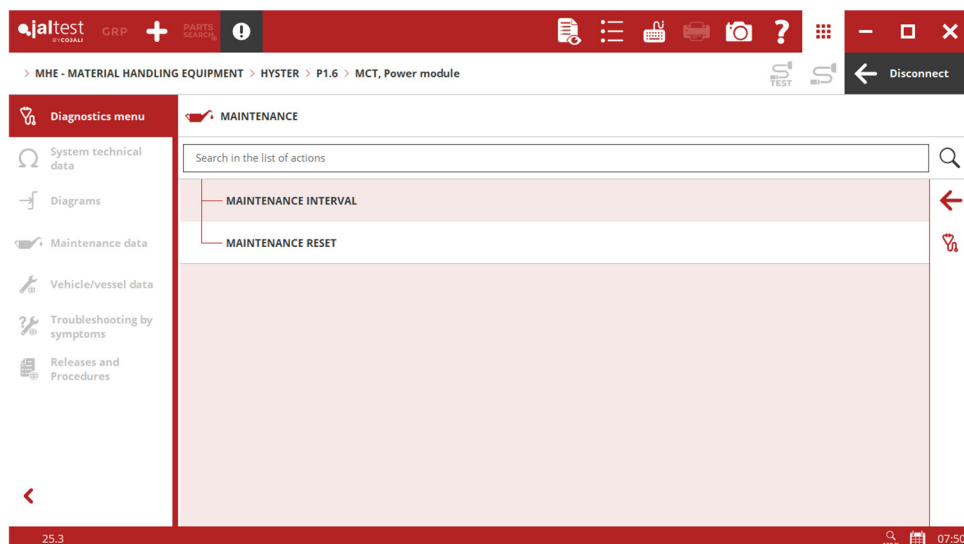
CURTIS

CPM power module for electric pallet jacks, parameter configurations.



HYSTER

MCT power module for electric pallet jacks, parameter configurations and maintenance operations.

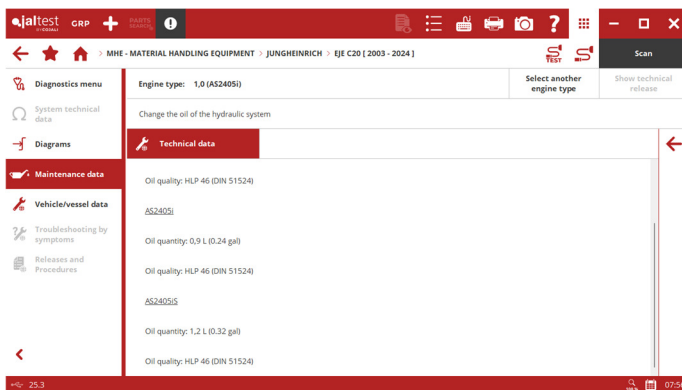


Wiring diagram configurations in the **CMC** power module for pallet jacks of the **B Series** family, including images and component technical data.

JUNGHEINRICH

MCM central computer for **ETV Series** retractable forklifts, **EJE and ERE Series** pallet jacks, **EJD and EMD Series** stackers, **ECE and ECD Series** order-picking pallet trucks and **EFG Series** electric forklifts, parameter configurations and calibrations.

Wiring diagram configurations of **TPM** and **MCM** central computers for pallet jacks and stackers of **EJE Series, ERE Series, ESD Series, ESE Series and EJD Series** families, including images and component technical data.



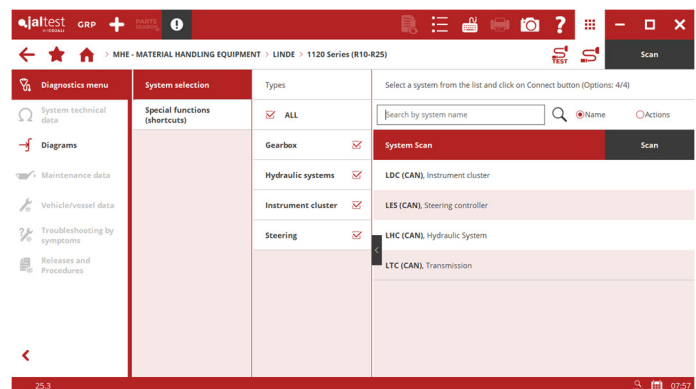
Vehicle technical data and maintenance services for pallet jacks and stackers of **EJE Series, EMD Series and EJD Series** families.

LINDE

⊕ Systems for **1120 Series** retractable forklifts including parameter configurations, calibrations and maintenance operations.

- **LHC** hydraulic system.
- **LDC** instrument cluster.
- **LES** steering system.

⊕ **LID** instrument cluster for pallet jacks, order-picking pallet trucks and electric stackers.

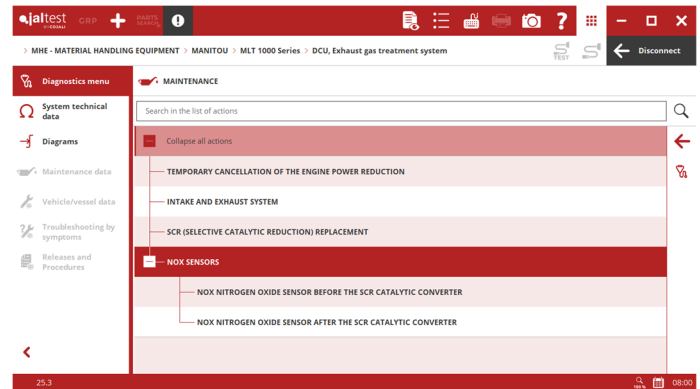


Wiring diagram configurations in the **LTC** transmission of **1120 Series** retractable forklifts, including images and component technical data.

MANITOU

EMR4 EDC 17 CV52 and **EDC 17 CV54** engine control systems for telescopic handlers, maintenance operations.

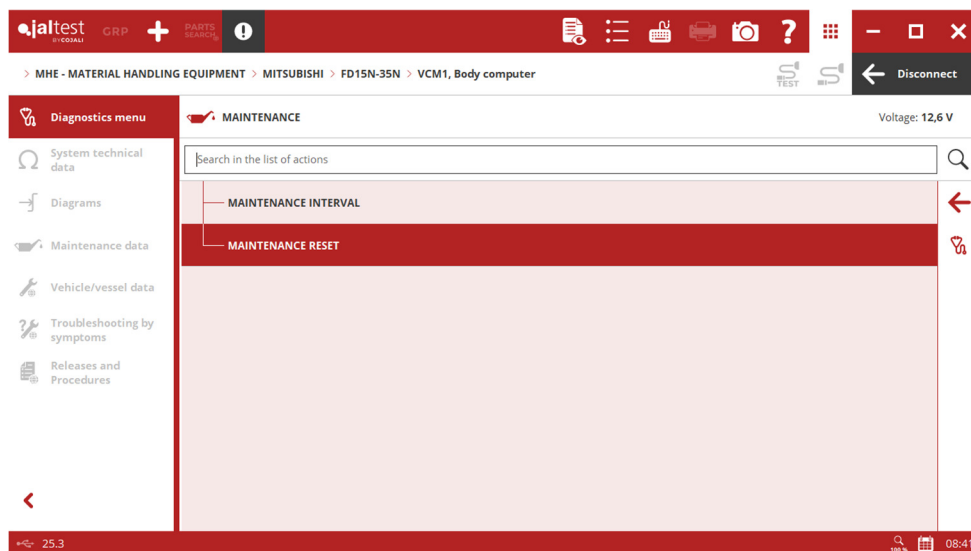
DCU exhaust gas aftertreatment system for telescopic handlers, activations, system checks and maintenance operations.



MITSUBISHI

+ **VCM6** and **VCM** central computer for **WP Series** electric pallet jacks that include functions such as the maintenance reset.

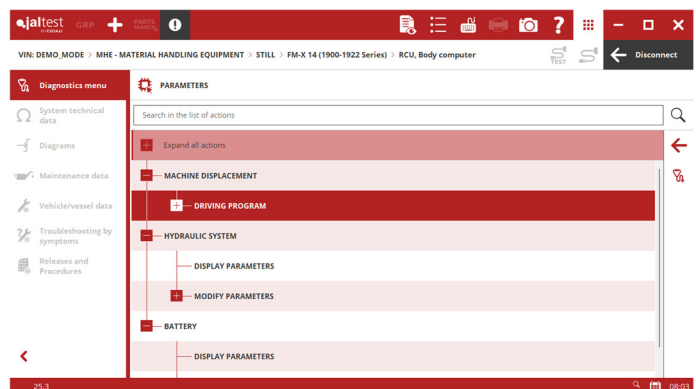
VMC1 and **VCM4** central computer for forklifts with combustion engines, maintenance reset.



STILL

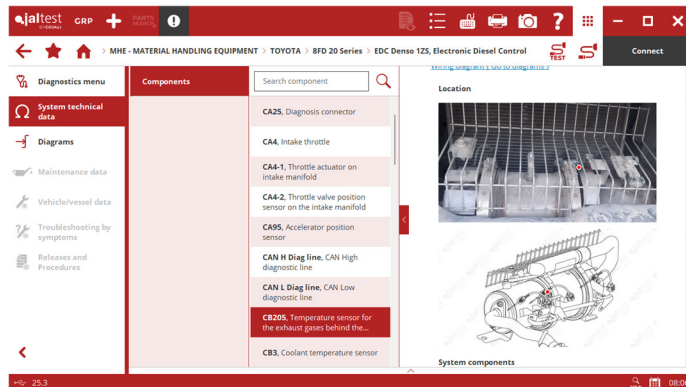
RCU central computer for **FM Series** retractable forklifts, parameter configurations and calibrations.

GCP engine control system for combustion forklifts, activations, system checks and maintenance operations.



TOYOTA

Denso EDC engine control system for **8FD Series** internal combustion forklifts, parameter configurations, calibrations and maintenance operations.

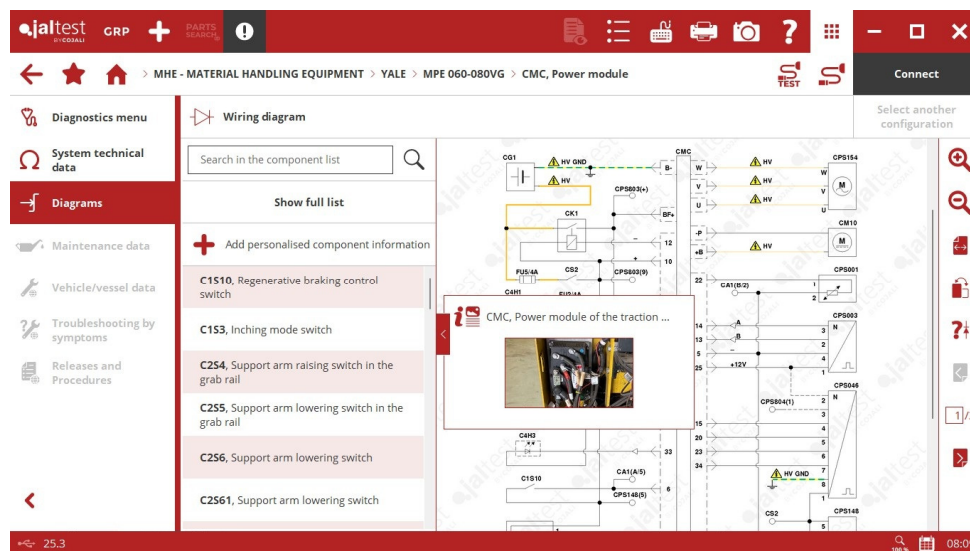


Wiring diagram configurations in the **EDC** engine control system of internal combustion forklifts of the **8FD Series** family, including images and component technical data.

YALE

MCT power module for electric pallet jacks, parameter configurations and maintenance operations.

Wiring diagram configurations in the **CMC** power module for pallet jacks of the **MPE Series** family, including images and component technical data.



ZAPI

ZPM (CAN) power module for pallet jacks, stackers, order-picking pallet trucks, retractable forklifts and electric counterbalance forklifts, parameter configurations.