



## INNOVATIONS 25.3

Take into account that this document is only a summary of the most relevant information of this new version. For further information, please visit Jaltest Report.

# BRANDS AND MODELS

---

Some of the new models and brands in Jaltest are listed below.

## TRACTOR

This version includes a new tractor brand: **RIGITRAC**.

### LS

MT1 Series

MT2 Series

MT3 Series

MT4 Series

MT5 Series

MT7 Series

### MASSEY FERGUSON

3 Series (VI/SP/FR/GE/WF/AL), engine: Tier 5/Stage V

### McCORMICK

X8.7 VT-Drive Series, engine: Tier 5/Stage V

### NEW HOLLAND

Boomer Compact Series, engine: LS

Workmaster Series, engine: LS (35/40/45/50/55)

## HARVEST EQUIPMENT

This version also includes a new harvest equipment brand: **SAMPO ROSENLEW**.

## SELF-PROPELLED AND TRAILING IMPLEMENTS

### ENERGREEN

RoboFIFTI

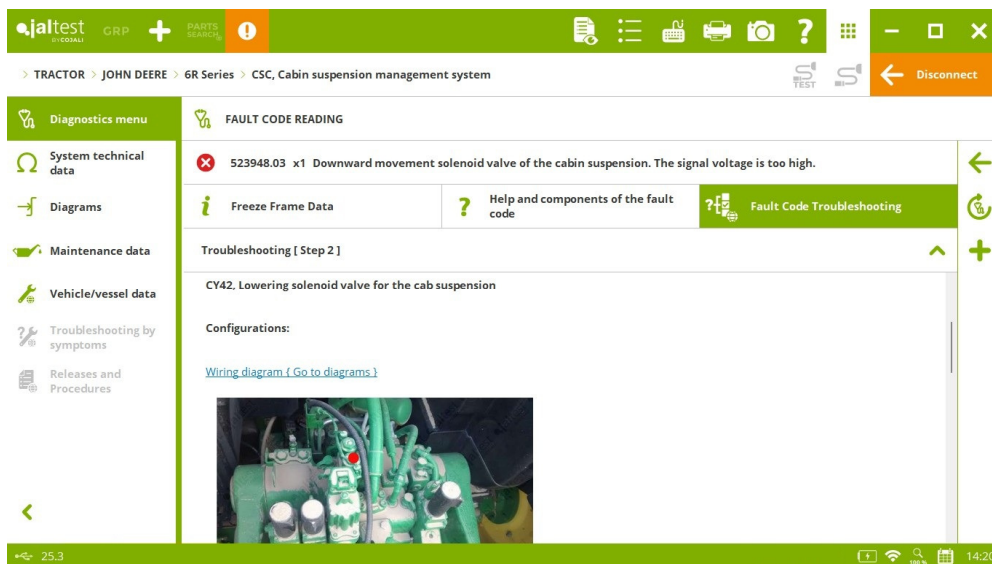
RoboPLUS

# DIAGNOSTICS AND SYSTEMS

Overall, there are new technical information and **SMART** guides by symptom and by the most common fault codes in the workshop thanks to the communication channels with clients such as the technical support offered by the project, training, Jaltest Feedback and “Product improvement” option.

## TRACTOR

It is important to note the SMART repair guides by fault code in the **CSC** and **SFA** suspension control systems present on multiple JOHN DEERE tractor models.



## CASE IH

⊕ **EHR** hydraulic system in the **Puma AFS Series - CVT** model, **engine: Tier 5/Stage V**.

**FPT EDC MD1 CS069** engine control system, new partial data table in **Farmall C Series** models, **engine: Tier 5/Stage V**, **Luxxum Series**, **engine: Tier 5/Stage V** and **Quantum V/N/F/CL Series**, **engine: Tier 5/Stage V**, among others.

SYSTEM DATA / OPERATION DATA / REGISTERED DATA / PARTIAL DATA		RESISTANCE TO EXHAUST GAS FLOW ESTIMATED SOOT MASS IN THE PARTICULATE FILTER			
	RANGE (N)	RANGE 1 0 ... 75	RANGE 2 75 ... 100	RANGE 3 100 ... 115	RANGE 4 115 ... 185
PRESSURE 1	0 ... 0.10	00:00:00	00:00:00	00:00:00	00:00:00
PRESSURE 2	0.10 ... 0.20	00:00:00	00:00:00	00:00:00	00:00:00
PRESSURE 3	0.20 ... 0.35	00:00:00	00:00:00	00:00:00	00:00:00
PRESSURE 4	0.35 ... 0.40	00:00:00	00:00:00	00:00:00	00:00:00
PRESSURE 5	0.40 ... 0.40	00:00:00	00:00:00	00:00:00	00:00:00
PRESSURE 6	0.40 ... 0.80	00:00:00	00:00:00	00:00:00	00:00:00
PRESSURE 7	0.80 ... 1.10	00:00:00	00:00:00	00:00:00	00:00:00
PRESSURE 8	1.10 ... 1.88	00:00:00	00:00:00	00:00:00	00:00:00

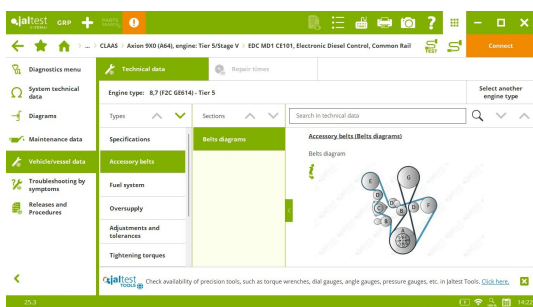
**FEHR** and **REHR** hydraulic systems, technical releases on the parameter configurations of the identification code of the spool valves in the **Puma Series - Multicontroller Full Power Shift** and **Puma Series - Multicontroller Semi Power Shift** models, among others.

Wiring diagram configurations of the **TCM** transmission in the **Farmall C Series** model, **engine: Tier 5/Stage V**.

## CLAAS

**FPT EDC MD1 CS069** engine control system, new engine type and maintenance services in the **Nexus (A65/A66/A67/A69/A70/A71)** model.

**FPT EDC MD1 CE101** engine control system, new engine types and maintenance services in **Axion 8X0 - Hexashift (A50)** models, **engine: Tier 5/Stage V**, **Axion 9X0 (A64)**, **engine: Tier 5/Stage V** and **Arion 4X0 (A73)**, **engine: Tier 5/Stage V**, among others.



**MFA** electronic module, technical release on the suspension calibration in **Arion 5X0 Cis (A18)** models, **engine: Tier 3/Stage III**, **Axion 8X0 (A31)**, **engine: Tier 3/Stage III** and **Axion 8X0 Cis (A09/A30)**, **engine: Tier 3/Stage III**, among others.

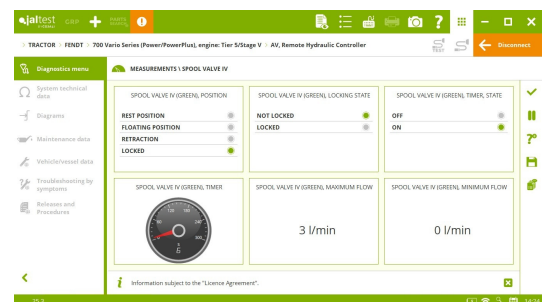
## DEUTZ-FAHR

**SECU** central computer system, new maintenance services such as the control unit reset for **6 Series**, **7 TTV Series**, **8 TTV Series** and **9 TTV Series** models, among others.

## FENDT

⊕ **AV**, **FHCM** and **RHCM** hydraulic systems in **300 Vario Series** models, **engine: Tier 5/Stage V** and **700 Vario Series (Power/PowerPlus)**, **engine: Tier 5/Stage V**, among others.

Wiring diagram configurations in the **EEM4S5 - EDC MD1 SISU** engine control system in the **300 Vario Series** model, **engine: Tier 5/Stage V**.



Wiring diagram configurations in the **EMR4 - EDC 17 CV52 DEUTZ** engine control system in **700 Vario Series (Power/PowerPlus)** models, **engine: Tier 5/Stage V** and **700 Vario Series (Profi/ProfiPlus)**, **engine: Tier 5/Stage V**.

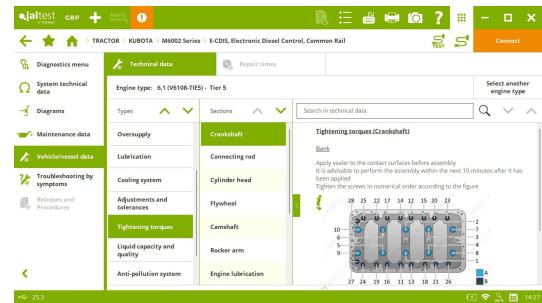
## JOHN DEERE

⊕ **TVC** hydraulic system in the **5G Series** model.

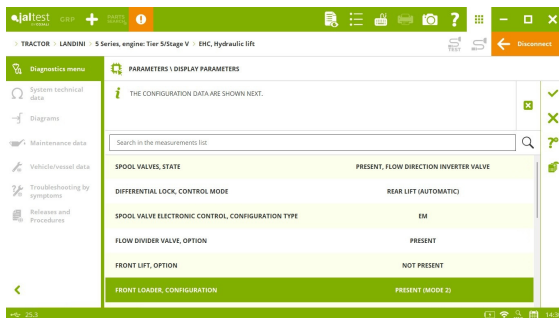
Wiring diagram configurations in **ATC** climate control systems in the **6R Series** model.

## KUBOTA

**KUBOTA E-CDIS** engine control system, new engine type and maintenance services in the **M6002 Series** model.



## LANDINI

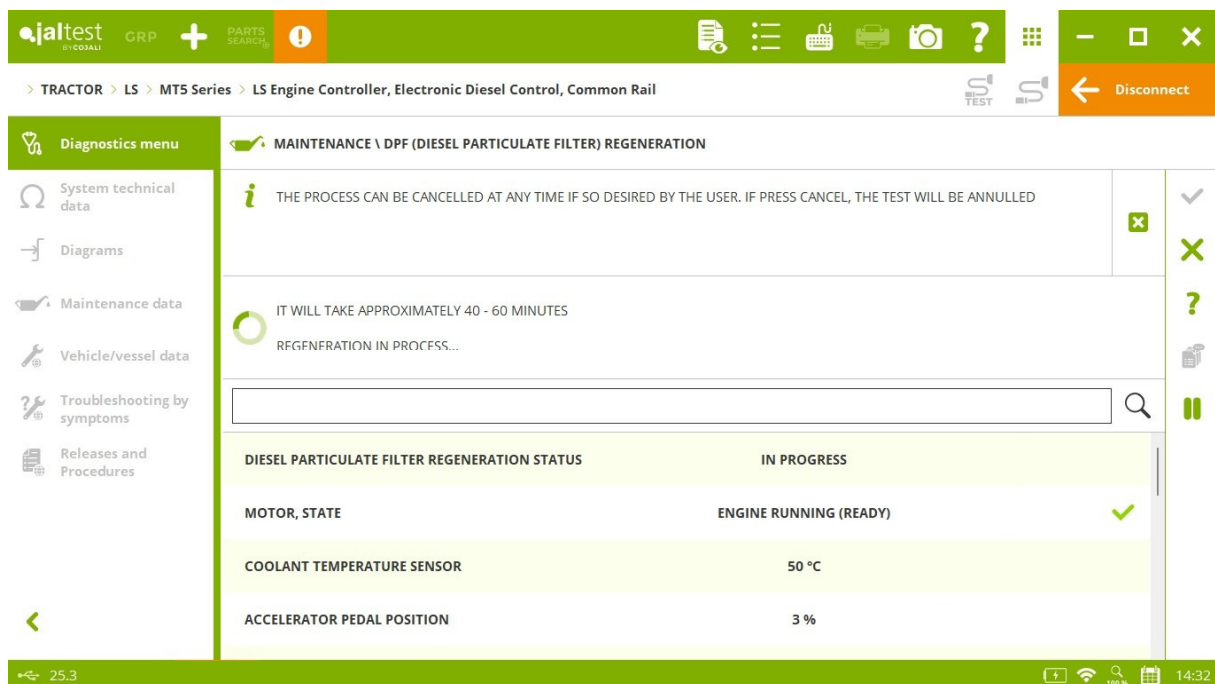


**EHC** hydraulic lift, parameter configurations in the **5 Series** model.

**Cluster** instrument cluster, technical release of the maintenance reset in **6H Series** models, **engine: Interim Tier 4/Stage IIIB-Final Tier 4/Stage IV** and **7 V-Shift Series, engine: Final Tier 4/Stage IV**, among others.

## LS

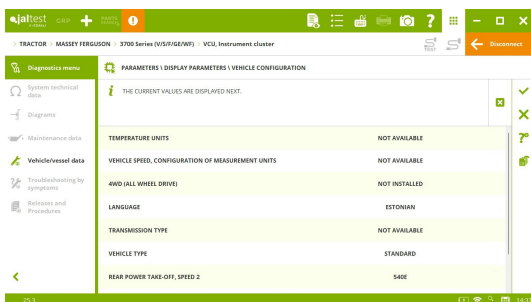
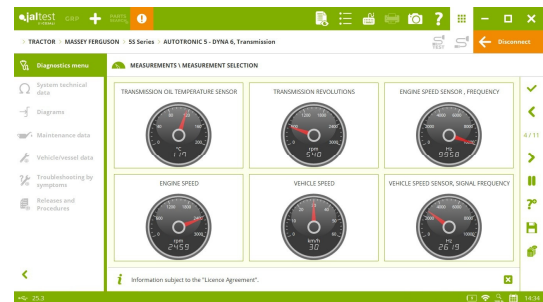
⊕ **LS Engine Controller** engine control system in **MT3, MT4, MT5** and **XU Series** models, among others.



## MASSEY FERGUSON

New systems in the **5S Series** model.

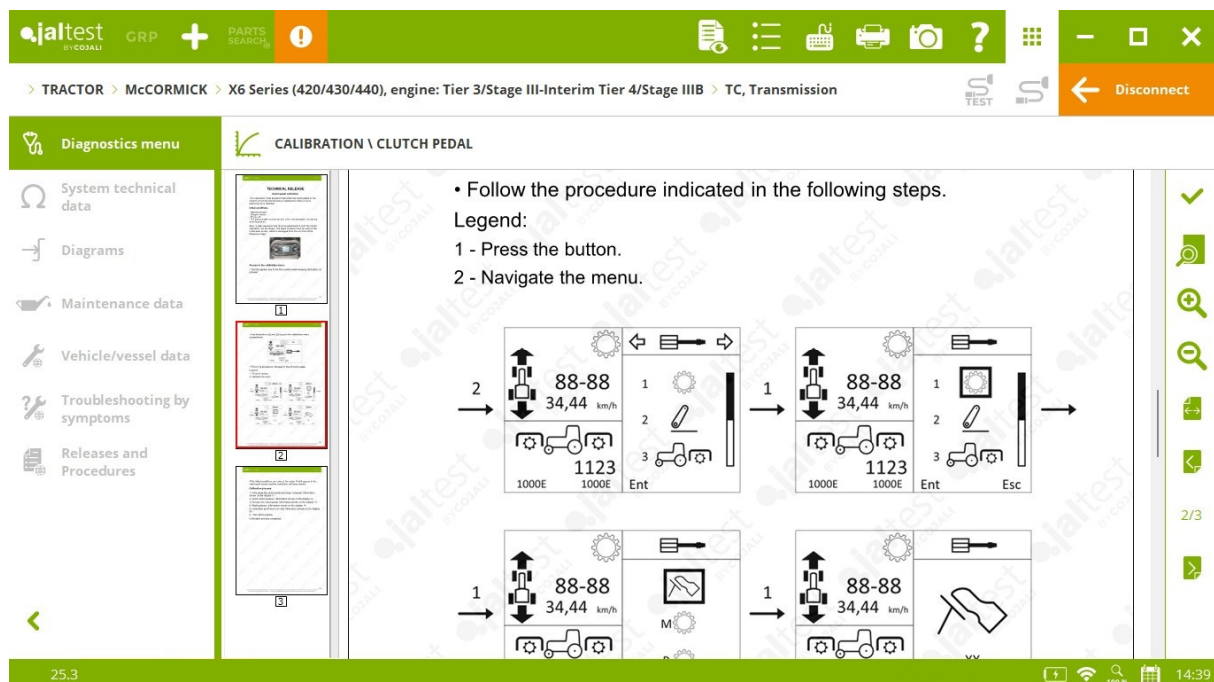
- ⊕ **AUTOTRONIC 5 - DYNA 4** and **AUTOTRONIC 5 -DYNA 6** transmission systems.
- ⊕ **AUX** hydraulic system.
- ⊕ **DGW** gateway.



**VCU** instrument cluster system, parameter configurations in **3700 AL Series** and **3700 Series (V/S/F/GE/WF)** models.

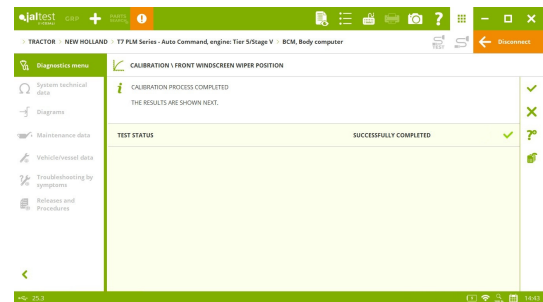
## McCORMICK

**TC** transmission, technical releases on the clutch pedal calibration and hydrostatic module in the **X6 Series (420/430/440)** model, **engine: Tier 3/Stage III-Interim Tier 4/Stage IIIB**.



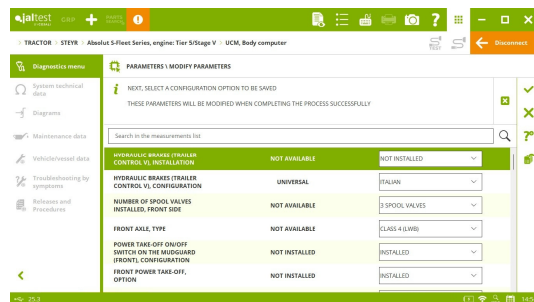
## NEW HOLLAND

**BCM** central computer, calibrations of the front and rear windscreen wipers in **T7 PLM Series - Auto Command 275/290/315/340** models, engine: Tier 5/Stage V and **T7 PLM Series - Auto Command**, engine: Tier 5/Stage V, among others.



**CAT4** electronic module, technical release on the cab air filter replacement in the **T4 V/N/F/LP Series** model, engine: Interim Tier 4/Stage IIIB.

**ICM** instrument cluster, technical release on the maintenance reset in the **T4 V/N/F/LP Series** model, engine: Tier 5/Stage V.



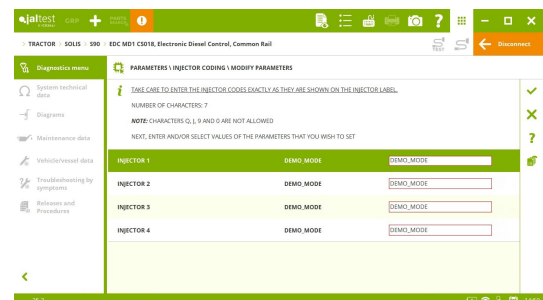
**DEC CVT** transmission wiring diagram configurations in the **T5 Series - Auto Command** model, engine: Tier 5/Stage V.

## SAME

**MVCU** central computer, parameter configurations, clutch checks and transmission calibrations in **Dorado Series**, **Frutteto CVT S/V Series** and **Virtus Series** models, among others.

## SOLIS

**SONALIKA EDC MD1 CS018** engine control system, parameter configurations, injector coding, Pressure Relief Valve (PRV) reset and activations.



## STEYR

**UCM** central computer, parameter configurations in the **Absolut S-Fleet Series** model, engine: Tier 5/Stage V.

Wiring diagram configurations in the **4WD** system in **CVT IMPULS Series** models, engine: Tier 5/Stage V and **Terrus Series**, engine: Tier 5/Stage V, among others.

## HARVEST EQUIPMENT

### JOHN DEERE

Wiring diagram configurations in the **CAB** electronic module and in the **LC1** and **LC2** harvest systems in **T500 Series**, **T600 Series** and **W500/W600 Series** models, among others.



## SELF-PROPELLED AND TRAILING IMPLEMENT

### JOHN DEERE

**Level 40 JOHN DEERE** engine control system in the **R4 Series** model.

