



jaltest
marine
MULTIBRAND DIAGNOSTICS

INNOVATIONS 24.2

CV
COMMERCIAL
VEHICLE

AGV
AGRICULTURAL
EQUIPMENT

OHV
OFF-HIGHWAY
EQUIPMENT

MHE
MATERIAL
HANDLING

marine
VESSELS

Take into account that this document is only a summary of the most relevant information of this new version. For further information, please visit Jaltest Report.

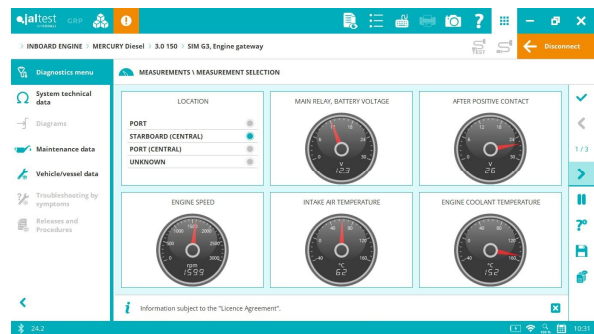
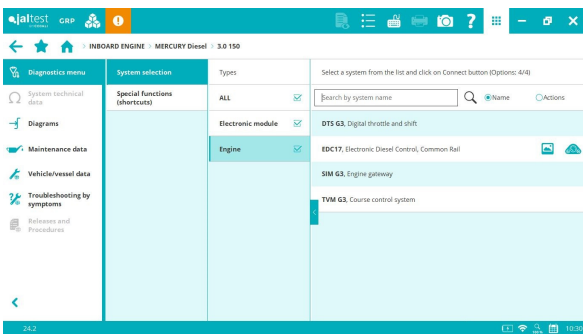
INBOARD

MERCURY DIESEL

SIM G3 Gateway, new software variants that enable the latest models to be covered, including specific measurements of every variant and technical data of system components.

TVM G3 course control system, technical data of system components.

In addition, new **SIM G3** and **TVM G3** systems available for **3.0 150**, **3.0 230** and **3.0 270** models in which **SMART** repair guides by symptom have been added.



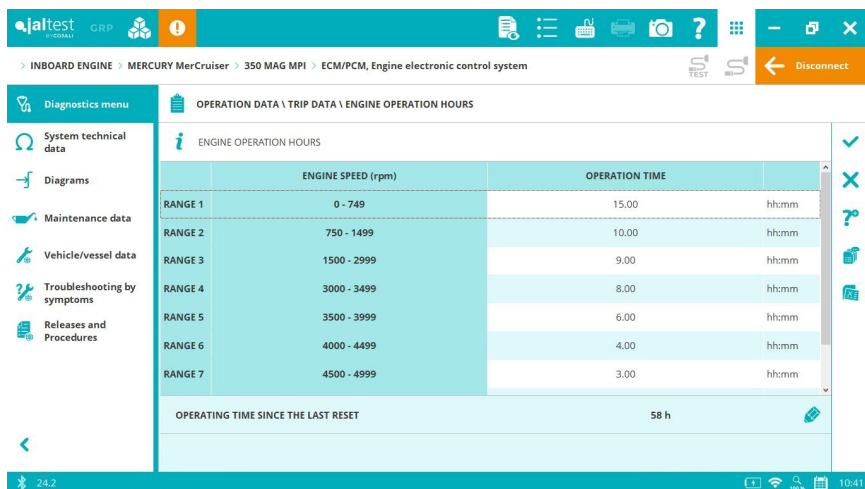
MERCURY MerCruiser

PCM-09 and **PCM-112** engine control systems, Freeze Frame Data (FFD).

TVM G3 course control system, technical data of system components.

SMART repair guides by fault code in several systems that apply to all brand models.

ECM and **PCM** engine control systems, operation data.



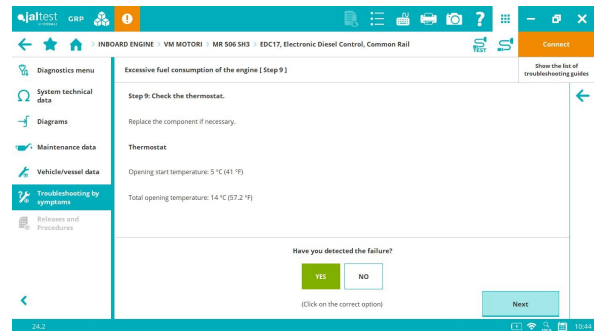
SCANIA

XPI engine control system, new software variants that provide coverage in the latest engine models: **DI13 076M, DI13 087M, DI13 088M, DI16 076M.**

VM MOTORI

SMART repair guides by symptom in the following models:

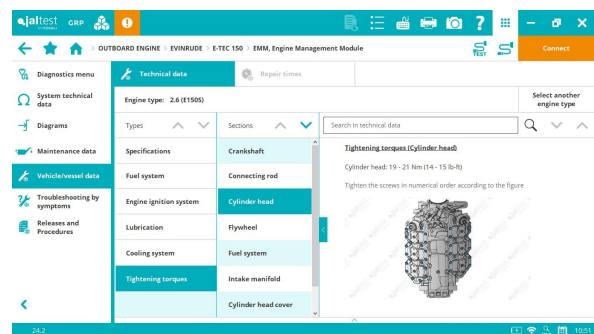
- **MR 506 SH3.**
- **MR 506 SS3.**



OUTBOARD

EVINRUDE

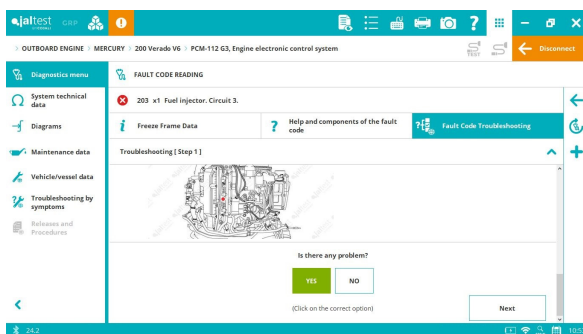
Technical data of engine type and maintenance services in the following family models: **Ficht Ram, E-TEC** and **E-TEC G2.**



HONDA

New software variants that apply to the latest models.

MERCURY



PCM-112 engine control system, Freeze Frame Data (FFD).

ECM, PCM and **PCM DFI (OptiMax)** engine control systems, operation data.

TVM G3 course control system, technical data of system components.

SMART repair guides by fault code in several systems such as **ECM, PCM, PCM DFI, ECM G3, PCM G3, PCM 112 G3** and **ECM by Tohatsu.**

SUZUKI

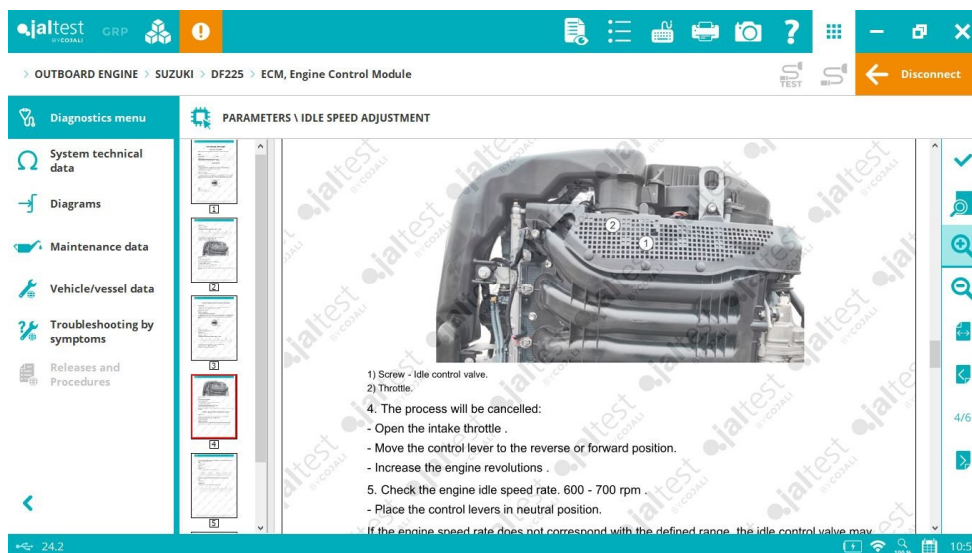
Advanced functionalities in engine control systems such as trim calibration, idle speed change parameter configuration, maintenance service reset and electronic key programming (compatible models only).

New software variants that apply to new **DF150** models from 2023.

Wiring diagram configurations in engine control systems of **DF40**, **DF50** and **DF60** models.

Technical data of engine type and maintenance services in **DF60**, **DF70**, **DF80**, **DF90**, **DF100**, **DF115**, **DF140**, **DF300** and **DF325** models.

SMART repair guides by symptom available for the following models: **DF9.9**, **DF15**, **DF20**.



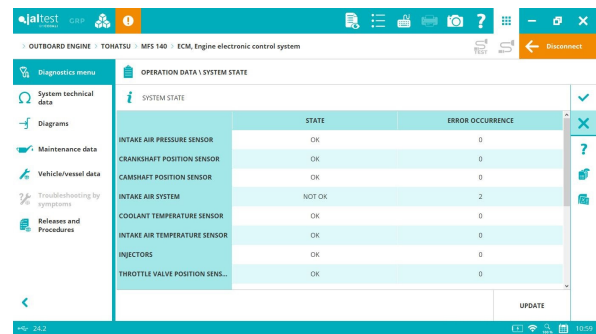
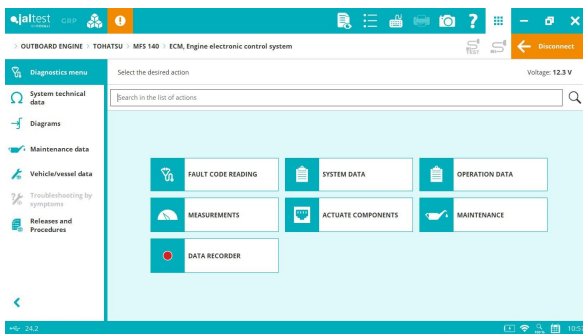
TOHATSU

⊕ **ECM** engine control system that applies to new **MFS 75**, **MFS 90**, **MFS 100**, **MFS 115** and **MFS 140** models.

- The **ECM** system includes:
 - Fault code reading
 - Live measurements
 - System data
 - Operation data
 - Operating times
 - System state
 - System events
 - Actuations
 - Fuel pump
 - Maintenance service
 - Maintenance data
 - Maintenance reset
 - Manual diagnostics.

In addition, the new models have wiring diagram configurations, component location images, component technical data, vessel technical data and maintenance services.

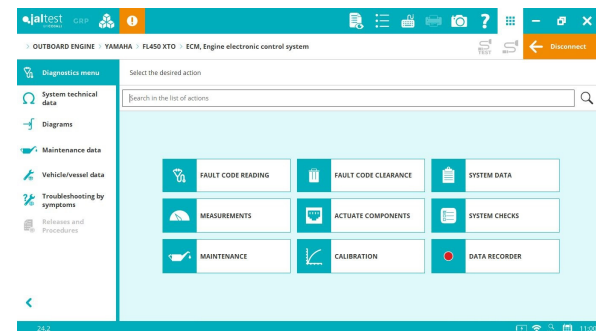
SMART repair guides by fault code in **MFS 9.9**, **MFS 15** and **MFS 20** models.



YAMAHA

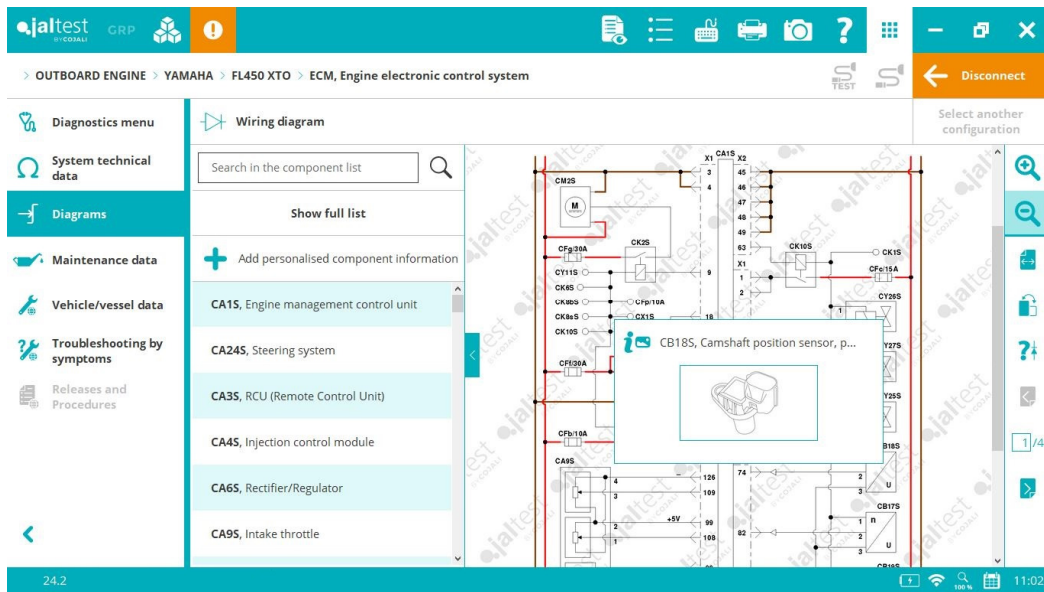
⊕ **F400 XTO, FL400 XTO, F450 XTO** and **FL450 XTO** models that include the **ECM** engine control system.

In addition, the new models have wiring diagram configurations, component location images, component technical data, vessel technical data, maintenance services and **SMART** repair guides by symptom.



Improvements in the action-loading control of newer software variants.

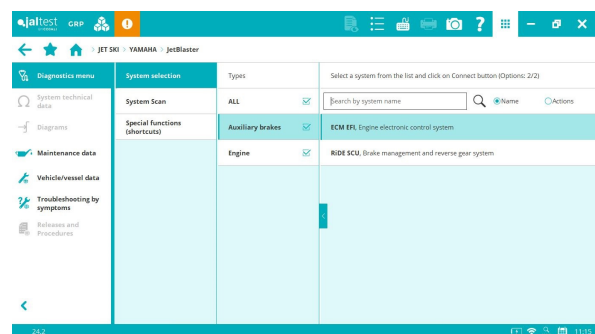
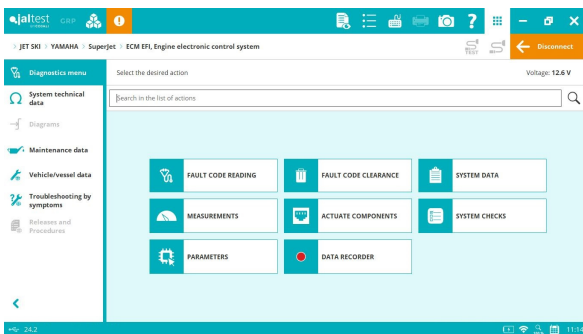
Wiring diagram configurations, component location images, component technical data, vessel technical data and maintenance services in **F200, FL200, LF200, F250, FL250** and **LF250** models.



JET SKI

YAMAHA

The Jet Series family is created with **SuperJet** and **JetBlaster** models that include the development of a new **ECM EFI** engine control system. **JetBlaster** has now the **RiDE** brake management and reverse gear system with advanced functionalities on the braking gate.



In addition, new models include vessel technical data, maintenance services and **SMART** repair guides by symptom.

STATIONARY ENGINE

Overall, new technical data available for new DOOSAN engine types.

CATERPILLAR

C-27 and **C-32** (on SAE J1939) engine control system, injector parameters.

C-18 (on SAE J1939) engine control system, injector parameters and check of errors in CAN communication lines.

New fault code troubleshooting guides for **C-2.8** and **C-3.6** engine control systems.

DEUTZ

EMR5 EDC MD1 (on SAE J1939) engine control system, checks of the air filter restriction switch and the engine protection.

EMR4 EDC17 CV52 (on SAE J1939) engine control system, EGR system test and EGR valve reset.

ISUZU

New fault code troubleshooting guides for **4HK1**, **4JJI** and **6HK1** engine control systems.

KUBOTA

EControls ECM 4G (on SAE J1939), engine control system, actuations, checks and maintenance services.

PERKINS

1204F / 1206F (on SAE J1939) engine control system, check of errors in CAN communication lines.

904J (on SAE J1939) engine control system, maintenance for the AdBlue/DEF module cleaning.