



# INNOVATIONS 24.2

Take into account that this document is only a summary of the most relevant information of this new version. For further information, please visit Jaltest Report.

# SOFTWARE INNOVATIONS

---

## KNORR-BREMSE DIAGNOSTICS

Knorr-Bremse diagnostics tool, integrated into Jaltest Diagnostics. Find out its advantages, maximise the capabilities of your diagnostics tool.

Knorr-Bremse Diagnostics can be obtained within the Jaltest software, as an additional subscription, called Knorr-Bremse Diagnostics Add-On.

Together with the Jaltest Diagnostics coverage, you will have a much more complete diagnostics for your vehicles.

## OEM RMI in DAF brand

Jaltest OEM RMI (Repair and Maintenance Information) is the Jaltest module that grants access to technical information about maintenance tasks and repairs from vehicle manufacturers of the main brands of commercial vehicle. From 24.2, available for DAF.

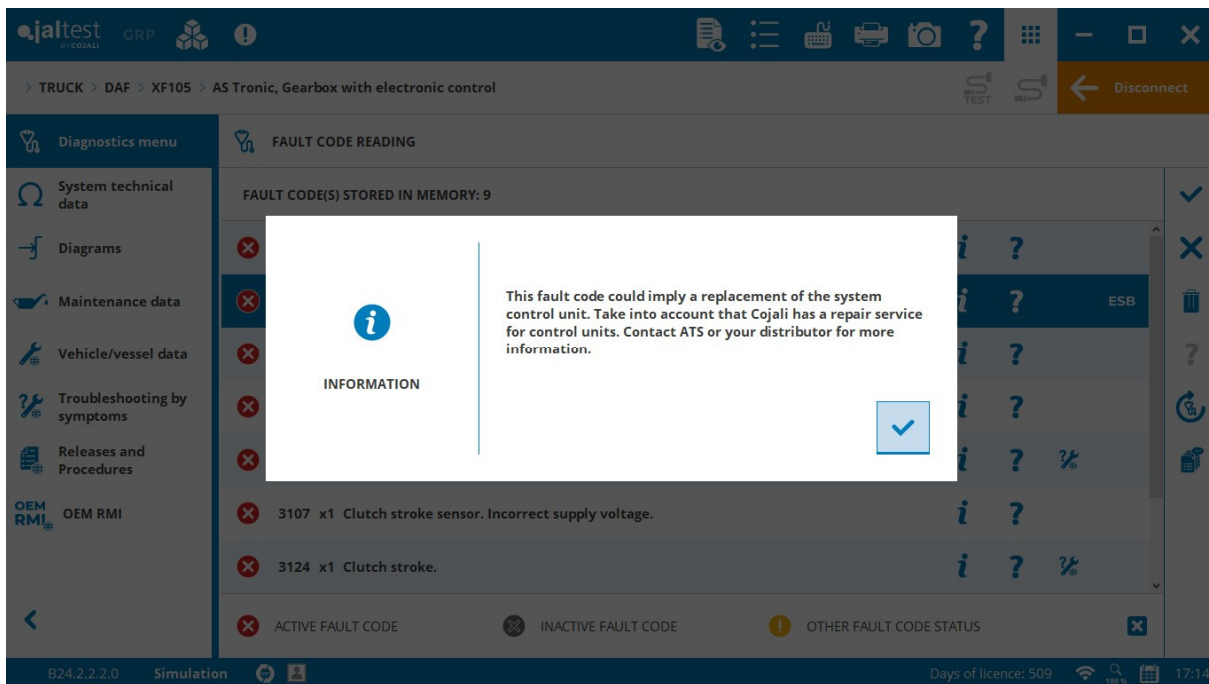
## Jaltest Central Services

New functionalities through the Jaltest Central Services remote service.

- **VOLVO/RENAULT** (vehicles with V3 and V4 technology), programming of the **LPOS** ADAS system and the **FCIOM** front module.
- **IVECO**, programming and parameter modifications of power take-offs in the **Hi-Tronix (TraXon)** transmission and in the **VCM Step2** system.
- **VOLVO/RENAULT** (vehicles with V2 and DXi technology), programming of the **EAC 1+** compressed air generation and maintenance system.
- **MERCEDES-BENZ**, programming of **EGS/VGS NAG2.1** transmissions in light commercial vehicle.

## Others

- Sending of files attached to the diagnostics report by e-mail.
- Indications in the fault codes with control unit repair service at COJALI through Jaltest ESB.



# BRANDS AND MODELS

Some of the new models and brands of this version are listed below.

## BYD TRUCK

ETH8 EV

EYT EV

## FIAT

Ducato 20 140 Natural Power [250], engine: F1CE0441A [2009 - 2014]

Doblò 1.4 Cargo/Natural Power [263], engine: 198 A4.000

## HINO

Blue Ribbon, engine: 6HK1

Blue Ribbon Hybrid

## ISUZU

C Series/E Series/GIGA Euro 6, engine: 6NX1-TC

## KING LONG

PEV12 (ZF Electric Drive)

## MAN

10E Lion's 4 City (10 m) Electric vehicle [2023 - ...]

32C Lion's 4 City LE (12 m) [2015 - ...]

## MERCEDES-BENZ

OC 500 LE Euro 6e (WEB634.42) [2022 - ...]

OC 500 RF Euro 6e (WEB634.4) [2022 - ...]

## MITSUBISHI FUSO

Aero Ace/Queen, engine: 6S10

## OTOKAR

Atlas 3D

## RENAULT

D Series ZE V3 Electric vehicle

T Series E V4 Electric vehicle

C Series E V4 Electric vehicle

## ROSENBAUER

PA146L

## SCANIA

C 320C B [2020 - ...]

C 340C A [2020 - ...]

K 280C B [2020 - ...]

K 310 IA

K 500C B [2020 - ...]

F 340 HA

## SETRA

500 Series MultiClass Euro 6 Hybrid (WKK410.39)

## VOLVO

FE E V3 Electric [2023 - ...]

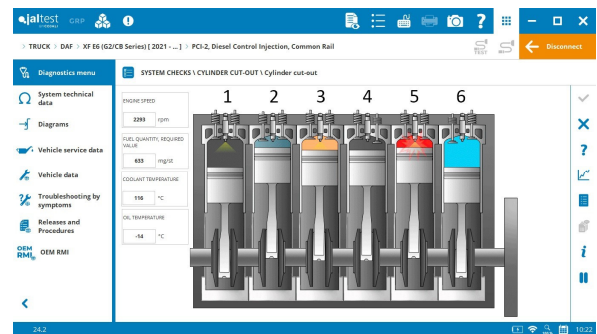
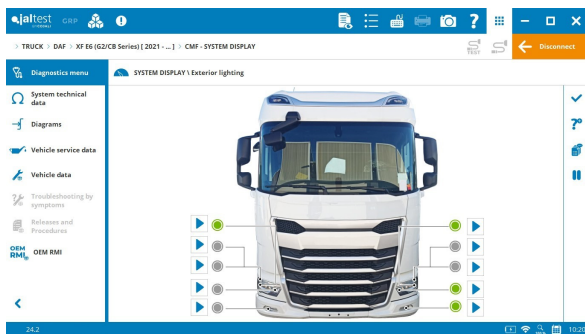
FL E V3 Electric [2023 - ...]

# DIAGNOSTICS AND SYSTEMS

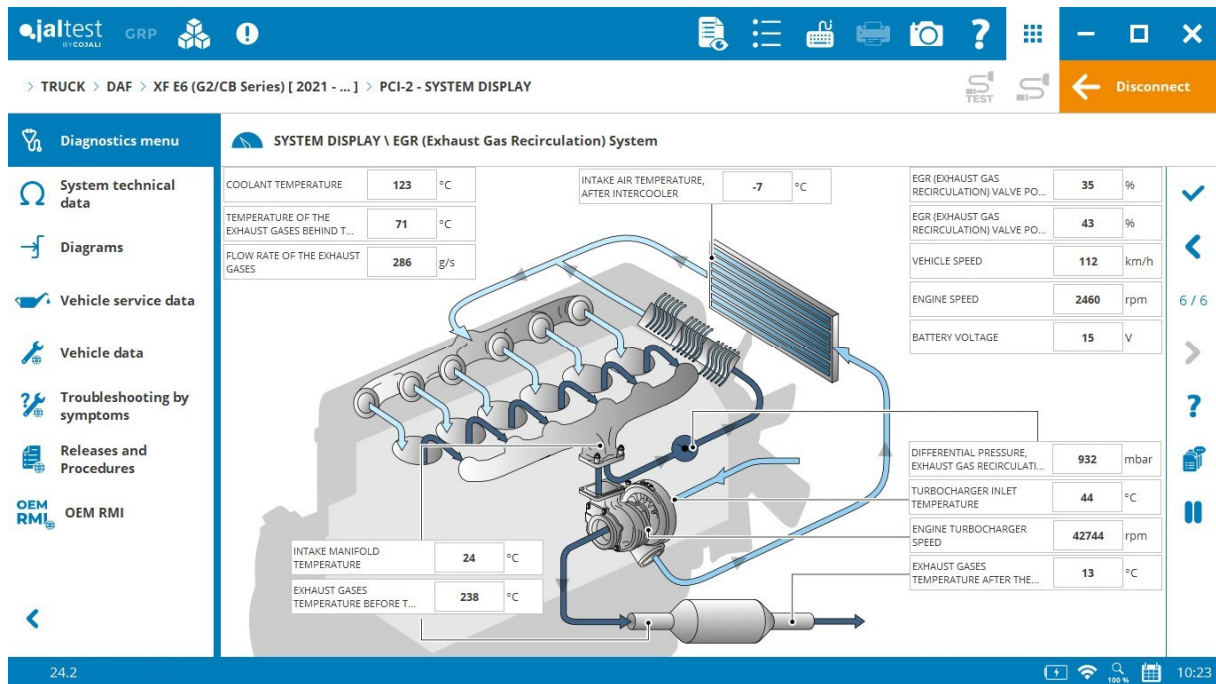
## TRUCK

### DAF

**ECS-DC6** engine control system in the **LF E6** model, Freeze Frame Data (FFD).

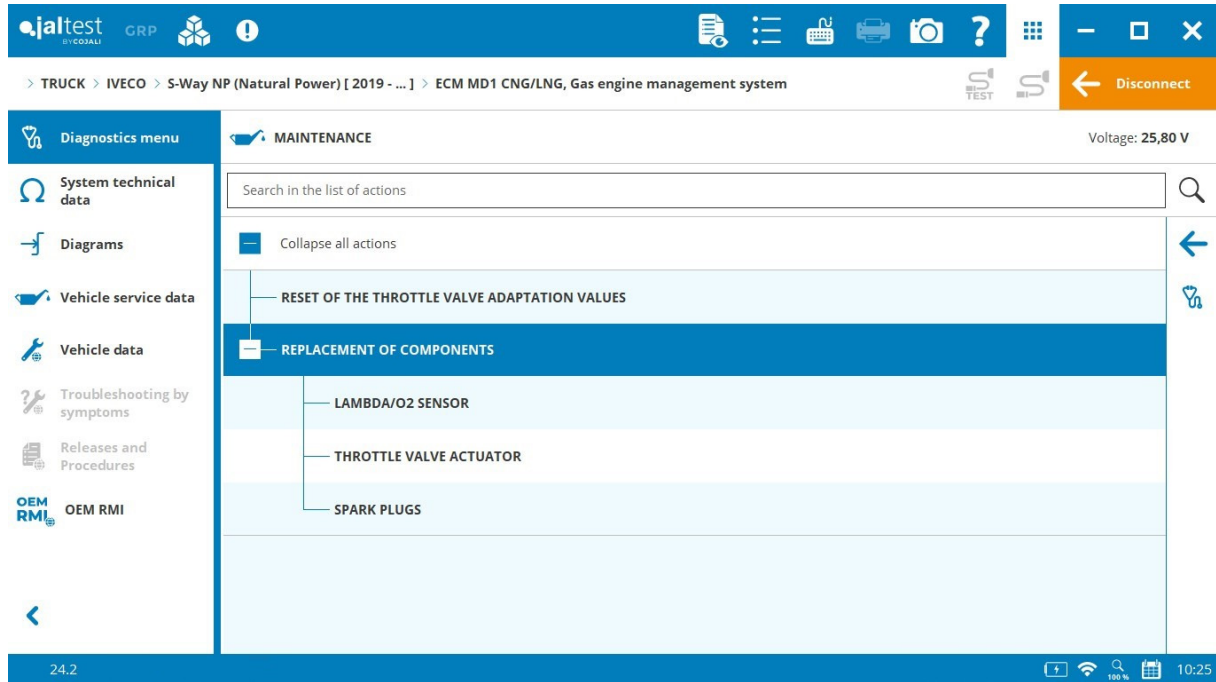


Measurement graphic representation in an interactive SYSTEM DISPLAY in **XF** models in the main systems:



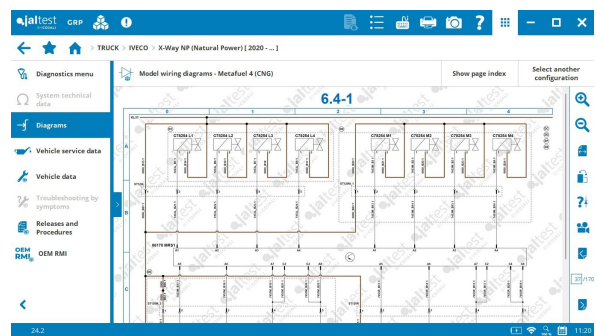
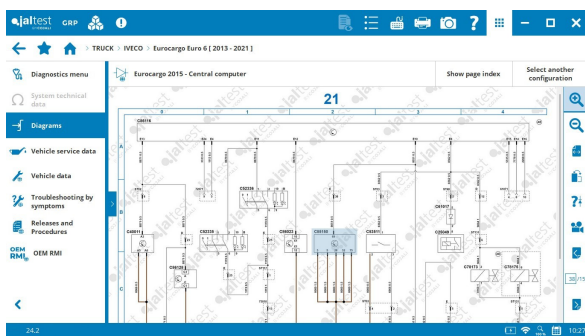
## IVECO

**ECM MD1 CNG/LNG** engine control system in **S-Way NP, X-Way NP** models, replacement of components such as the Lambda sensor, the throttle valve and the spark plugs.



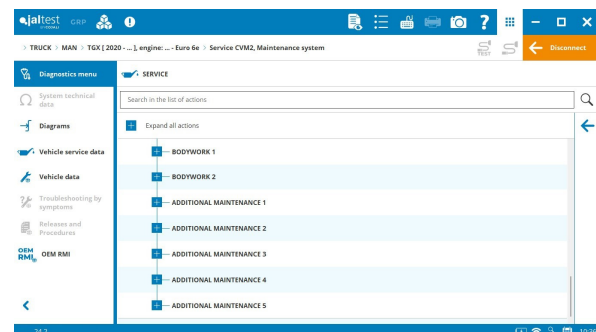
New technical information in diagrams by model of the brand, in addition, new diagrams by model in **Eurocargo Euro 6, X-Way NP (Natural Power), T-Way, Eurocargo MY2015 CNG and Eurocargo Euro 6-E** models.

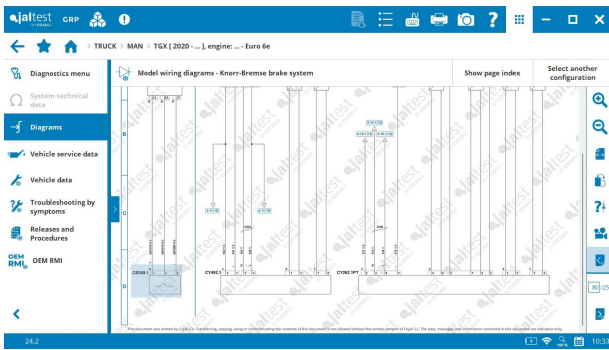
Information available with the subscription of the new technical information module 'Jaltest INFO Plus'.



## MAN

**Service CVM2** maintenance system in models of the **TG3 [2020 - ...]** series, configuration of additional maintenance services of the vehicle.





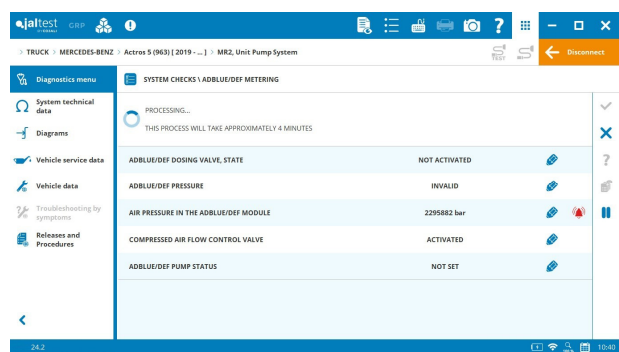
New technical information in diagrams by model of the brand, in addition, new diagrams by model in **TRGX and TGS** models of the **TRG3** series.

Information available with the subscription of the new technical information module 'Jaltest INFO Plus'.

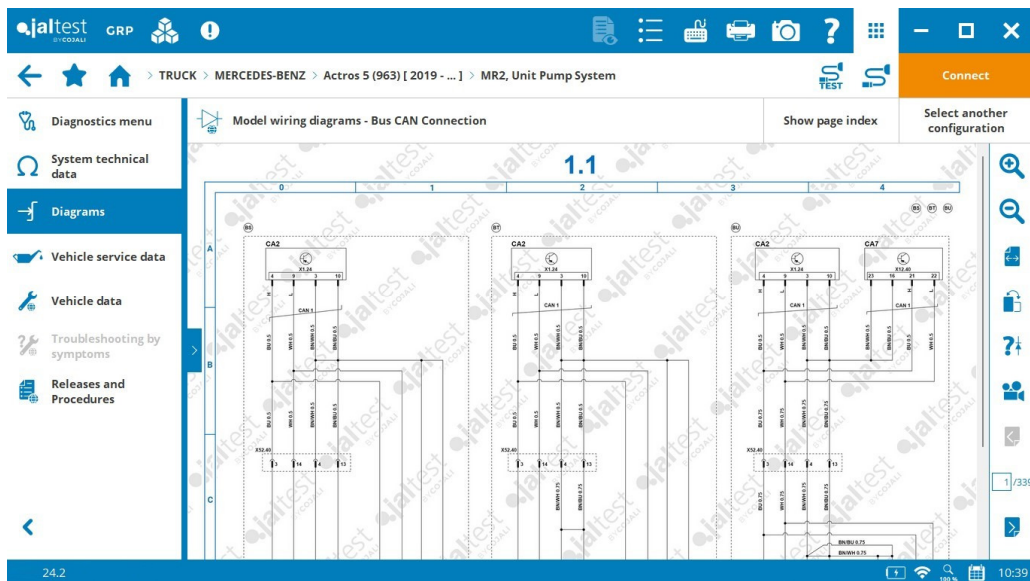
## MERCEDES-BENZ

**MR2** engine control system, AdBlue/DEF dosing check in variants of the **Euro 5** system of models outside Europe.

New technical information in diagrams by model of the brand, in addition, new diagrams by model in **Actros 4, Actros 5, Antos (963), Arocs (964) and Arocs 5 (964)** models.

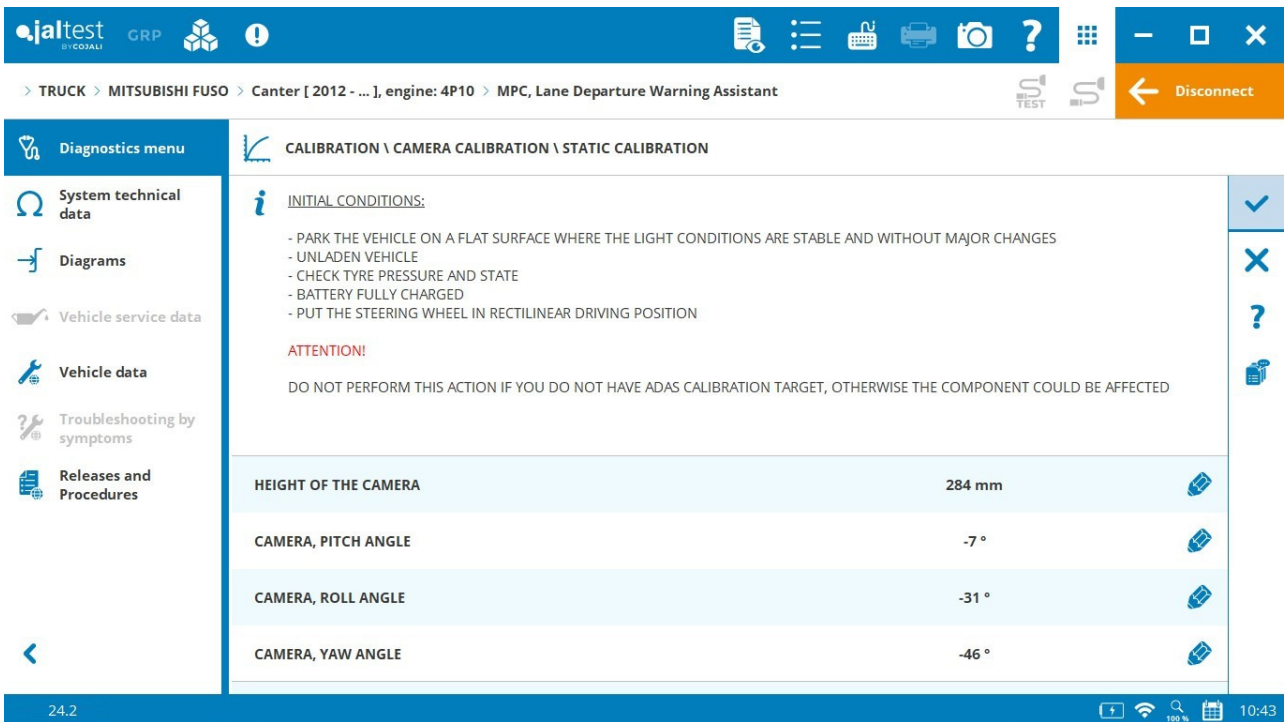
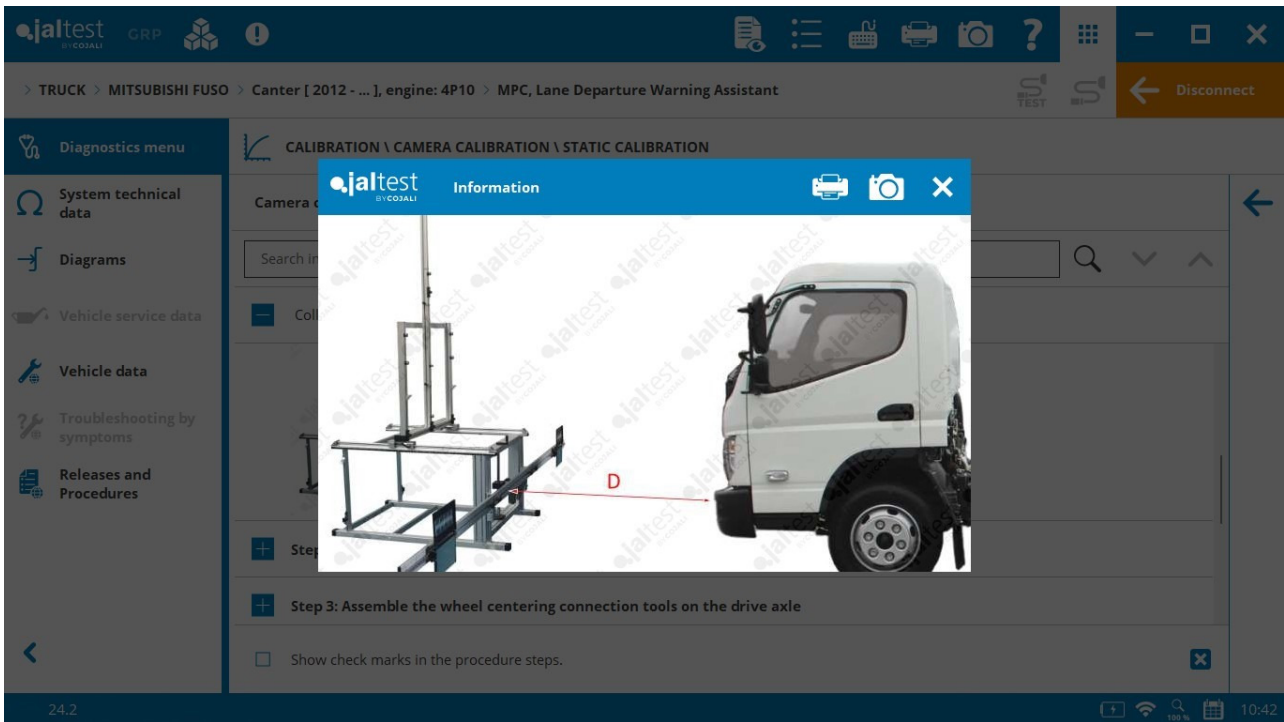


Information available with the subscription of the new technical information module 'Jaltest INFO Plus'.



## MITSUBISHI FUSO

**ADAS MPC** lane departure control system in **Canter Euro 6** models, static camera calibration. In addition, a new **Jaltest Tools** reference of the calibration target 50001024 is included.





## RENAULT

In vehicles with **V3 technology**:

⊕ Systems for models of electric vehicle.

**ESCM** (Energy Storage Control Module)

**EVCM** (Electromobility Vehicle Control Module)

**PCM** (Powertrain Control Module)

**CCCM** (Combined Charging system Control Module)

**HPCU** (Hybrid Powertrain Control Unit)

System selection	Types
All Systems Scan	ALL
Main Systems Scan	Hybrid systems
Special functions (shortcuts)	Instrument cluster
Maintenance reset (shortcuts)	Lighting
	Powertrain
	Safety
	Suspension
	Tachograph
	Voltage converters and i...

## SCANIA

⊕ Systems for the **SUPER** range: **COO10** coordinator and **FLC3** driver assistance camera.

System selection	Types
All Systems Scan	ALL
Main Systems Scan	Antipollution
Special Functions (shortcuts)	Antishift
Maintenance reset (shortcuts)	Brakes
Manual diagnosis	Central computer
	Chassis module
	Climate HVAC
	Compressed air processing
	Data registration, telematics and...

System selection	Types
All Systems Scan	ALL
Main Systems Scan	Antipollution
Special Functions (shortcuts)	Antishift
Maintenance reset (shortcuts)	Brakes
Manual diagnosis	Central computer
	Chassis module
	Climate HVAC
	Compressed air processing
	Data registration, telematics and...

**EMS10** engine control system for [2017 - ...] models, parameter configuration of the engine protection, the idle speed rate and the power take-off.

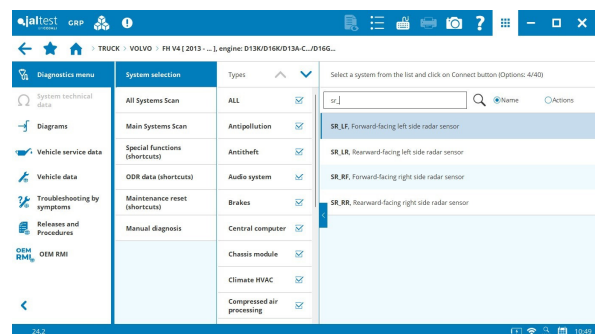
**TMS3** transmission, parameter configuration as the **ECOROLL** function among others, system checks and activations such as the retarder check and the speed sensor check.

The **ECOROLL** function automatically calculates and predicts when to use inertia to lower in neutral position or to retain the engine. In this way, it achieves a very high fuel economy. The use of the function is only useful in ten-second intervals.

## VOLVO

In vehicles with **V4 technology**:

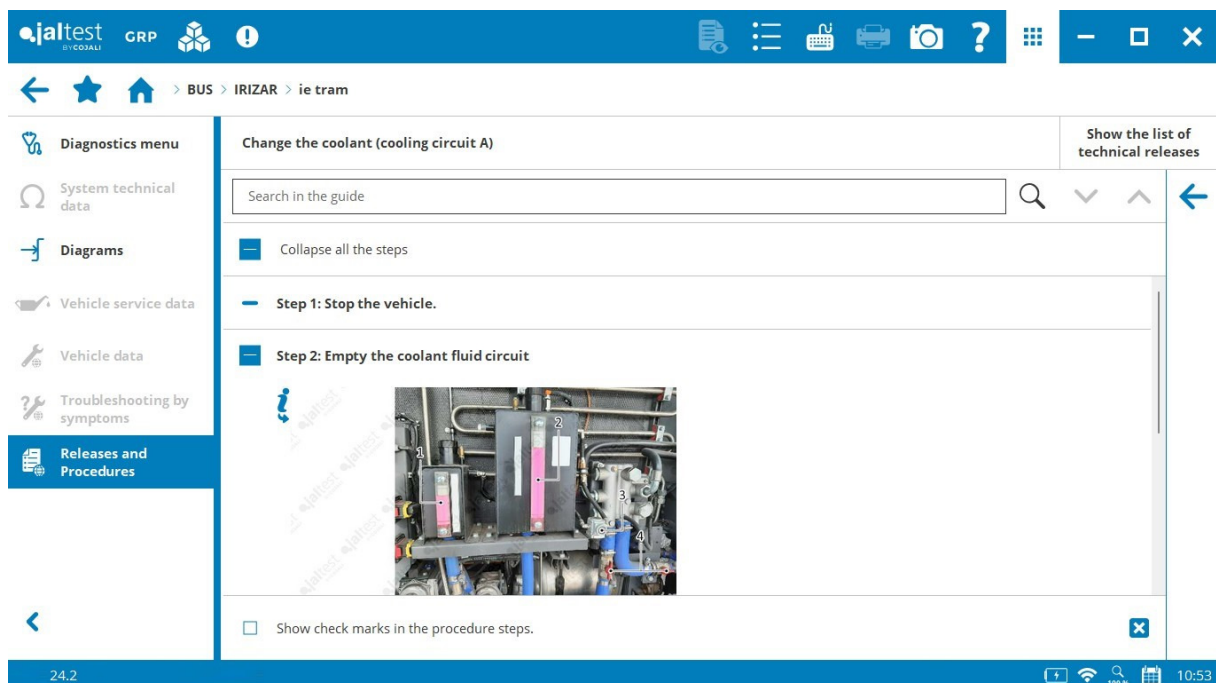
- ⊕ **ADAS** driving assistance systems, **SR\_LF**, **SR\_RR**, **SR\_RF** and **SR\_LR** side radars.
- ⊕ **TPMS** tyre pressure monitoring system.
- ⊕ **REM** entertainment system.



## BUS

## IRIZAR

New guides and procedures in electric vehicles such as the antifreeze fluid replacement or the insulation and connection check.



Fault code clearance in **DICO**, **Inverter 1** and **Inverter 2** electrical part control systems of **ie bus**, **ie tram** electric models.

## IVECO/IRISBUS

**EDC 17 CV41 + Denox 2.2** engine control system in **Euro 6** models, manual diagnostics procedure.

New technical information in diagrams by model of the brand, in addition, new diagrams by model in **Evadys E6, Evadys E6-E and Magelys Euro 6** models.

Information available with the subscription of the new technical information module 'Jaltest INFO Plus'.

## MAN

⊕ Specific electric vehicle systems for **LION CITY EV** models: **EHS 1 (Master), EHS 2 (Slave), EVCCI, EVCCI, BCCM, BNLW1** and **BNLW2**.

## SCANIA

⊕ System for **Euro 6** models such as the **EASI** power steering system and the **SMS - ELC3** suspension control system of the articulated part.

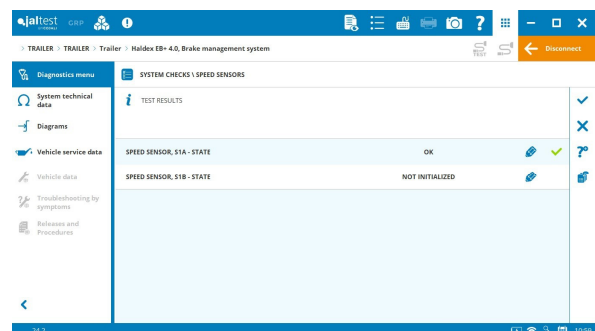
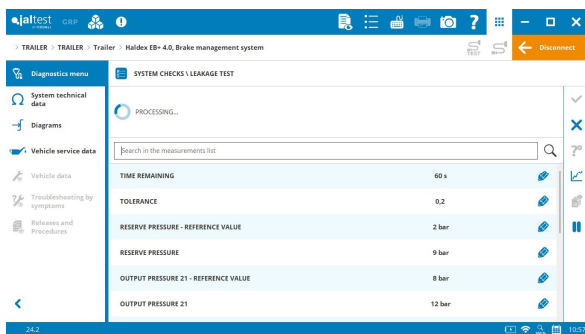
## OTOKAR

Fuse and relay box diagrams in **KENT C CNG, NAVIGO T** and **TERRITO U Euro 6** models.

## TRAILER

### HALDEX

**Haldex EB+ 4.0** EBS brake control system, air leakage test of the system and speed sensor check.



## WABCO

**Wabco EBS E** brake control system, new events in the operation data.

# LIGHT COMMERCIAL VEHICLE

## FIAT

**MJD 9DF** engine control system for **Fiat Ducato [14] and Ducato [19]**, reset after replacing components such as the particulate filter sensor, the cylinder head and the air filter.

## IVECO

**EDC MD1** engine control system in **Daily [2021 - ...]** models. AdBlue/DEF system checks such as the dosing test and the pump control check.

TEST STATE	FIRST FILLING	
PROCESSING...		
POWER STAGE, STATE	2	
ADBLUE/DEF FEEDBACK PUMP	4	
ADBLUE/DEF INJECTOR 1, POWER STAGE	1	
ADBLUE/DEF INJECTOR 2, POWER STAGE	2	
ADBLUE/DEF PRESSURE	-93 hPa	
SCR SYSTEM (ETC), STATE	0	

## MERCEDES-BENZ

**STH** auxiliary heating in **Sprinter 907/910** models, system check.

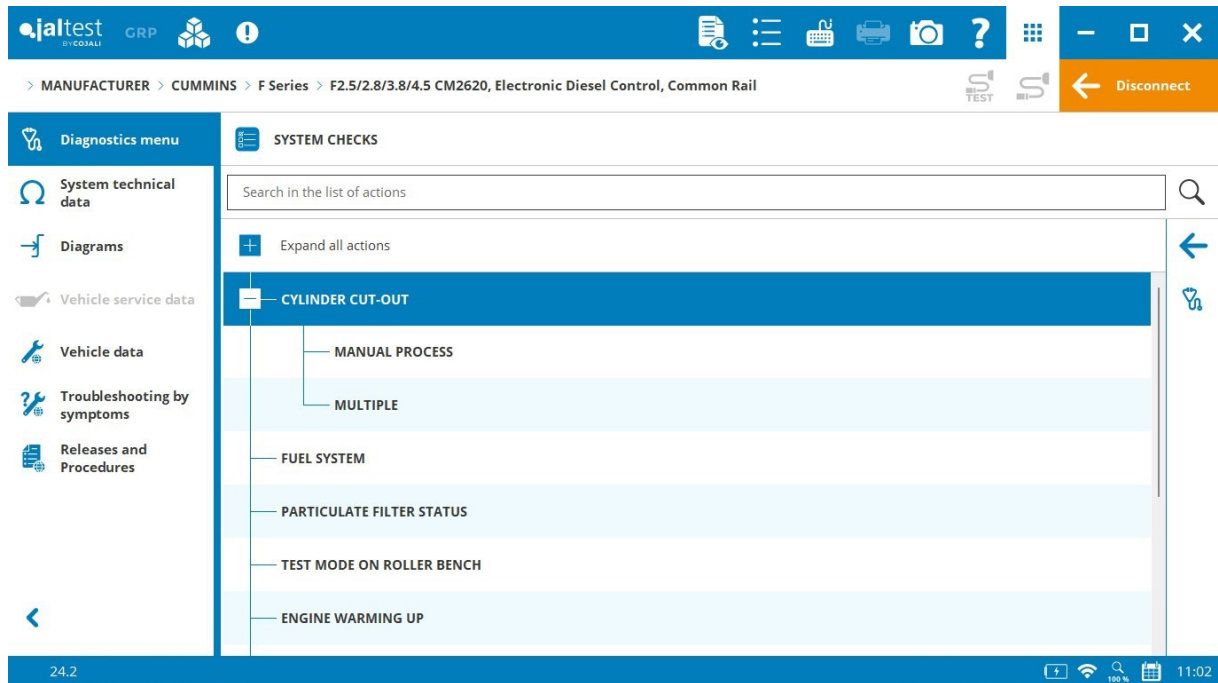
## STELLANTIS Group

⊕ **EAT 8** transmission for **Expert/ Jumpy/ Vivaro/ Scudo [K0]** and **Berlingo/ Partner/ Combo [K9]** models.

# MANUFACTURERS

## CUMMINS

**Cummins F2.5/2.8/3.8/4.5 CM2620** engine control system, system checks and Diesel Particulate Filter regeneration.



## FIAT

**EDC 17 CV41** engine control system, compression test to assess the condition and performance of the different engine cylinders.

## ZF

⊕ **AVE 130** electric traction system.

This electric traction system is an ideal solution for electric and hybrid buses, allowing for optimised driving and zero emissions. This system coverage is very advantageous for our workshops.