



 **jaltest**
MHE
MATERIAL HANDLING

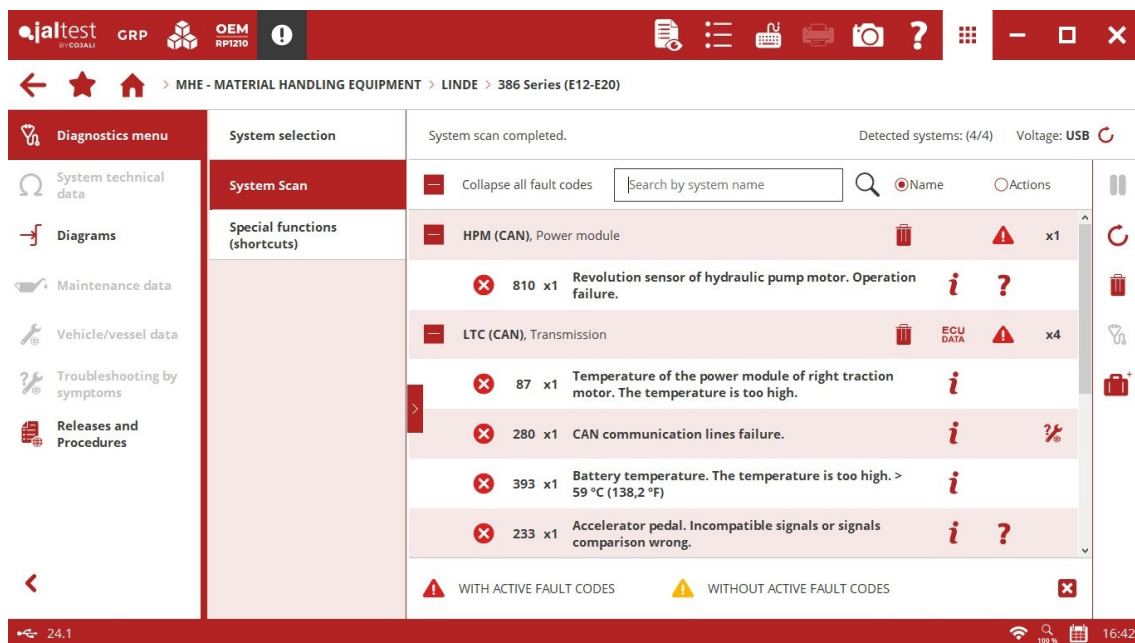
INNOVATIONS 24.1

SOFTWARE INNOVATIONS

The new software version Jaltest 24.1 once again offers more improvements and innovations that consolidate this tool as a benchmark in multi-brand diagnostics for commercial vehicles, agricultural equipment, OHW equipment, material handling equipment and vessels.

With the innovations of the graphic interface, it is possible to:

- Add new formats to the table cells and highlight data.
- Attach the diagnostics report to a Jaltest Feedback.
- Keep the expert mode active in each software login.
- Delete fault codes directly from the results of a system scan process.

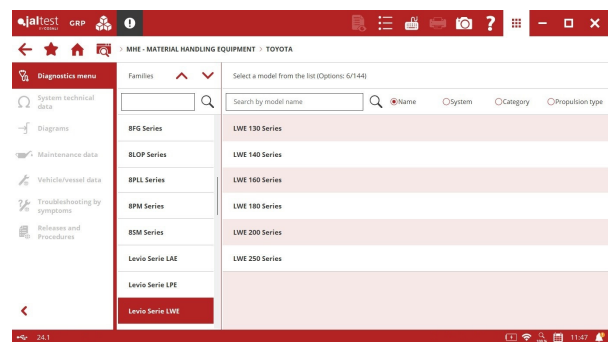
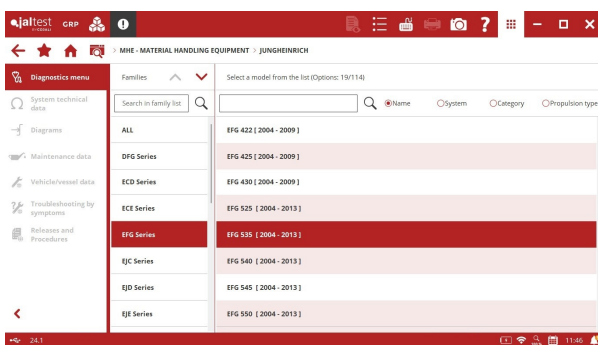


BRANDS AND MODELS

Take into account that this document is only a summary of the most relevant information of this new version. For further information, please visit Jaltest Report.

This version includes **PB** and **ZPMC** brands.

In addition, the number of models in the following brands has increased: **BT** (Cargo Serie CE family), **JUNGHEINRICH** (EFG Series family), **MOFFETT** (M8 Series family), **STILL** and **TOYOTA** with new electric models of pallet jacks, stackers and order-picking pallet trucks.

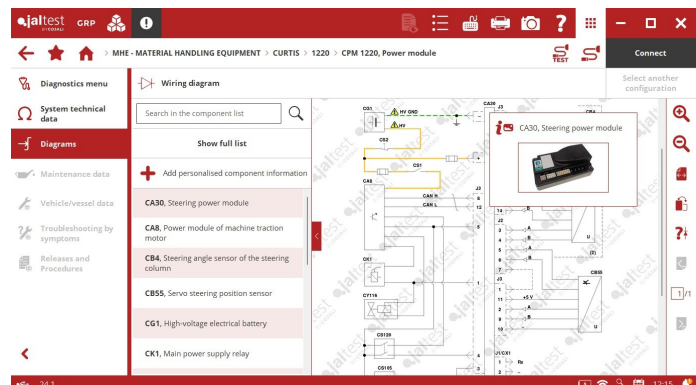


DIAGNOSTICS AND SYSTEMS

CURTIS

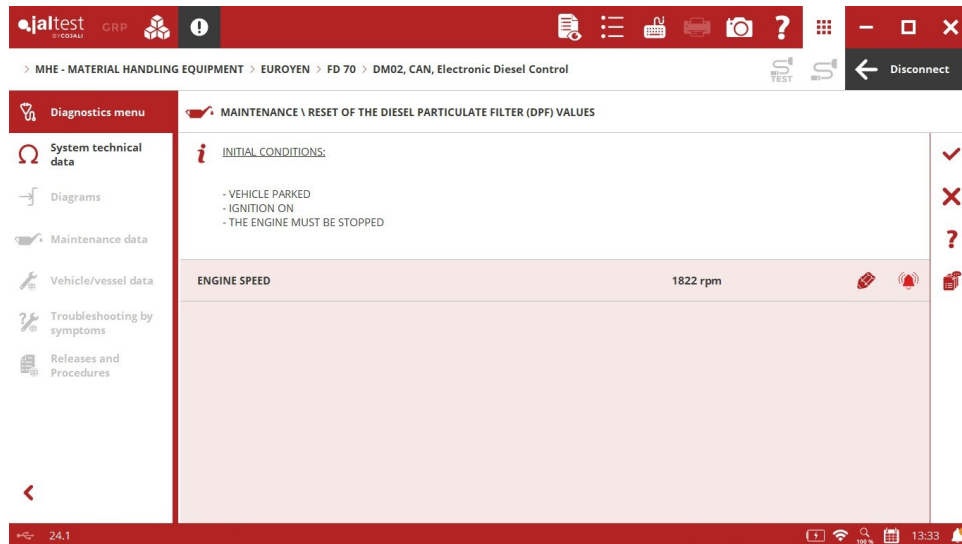
⊕ **JDC 569.9** connector.

CPM 1220 power module that includes wiring diagram configurations.



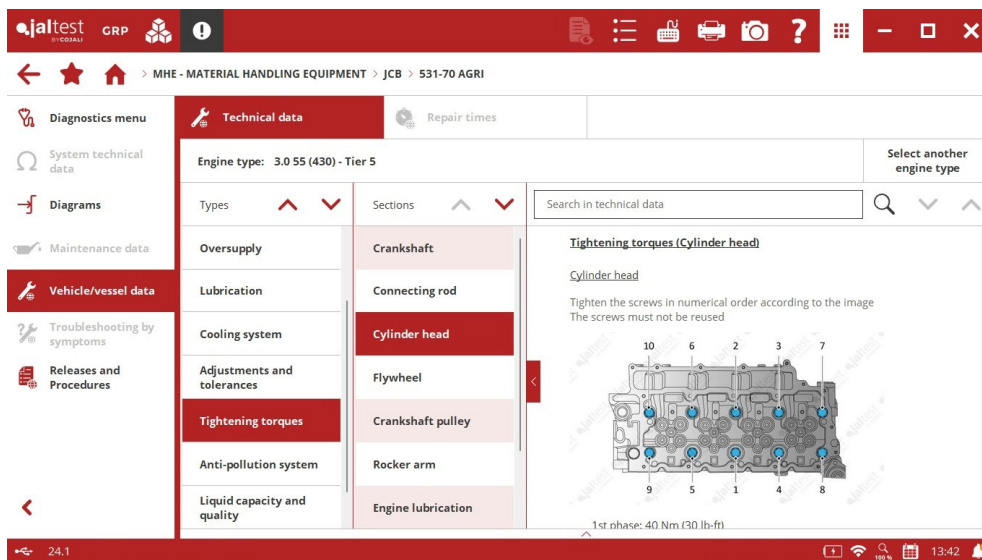
EUROYEN

Doosan **DM02** engine control system, reset of the Diesel Particulate Filter values.



JCB

Vehicle data in **531 (500 Series family)** models that include belt diagrams, tightening torques, and much more.



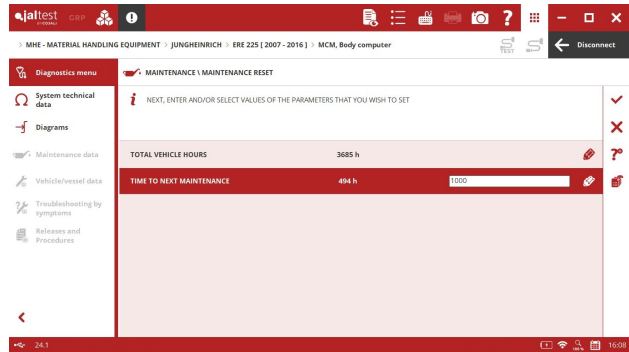
JLG

EMR5 – EDC MD1 engine control system, checks and activations of the system.

JUNGHEINRICH

MCM central computer, steering calibration for **EFG 110, EFG 113** and **EFG 115** models.

MCM central computer, maintenance reset in pallet jacks of the **ERE Series** family.



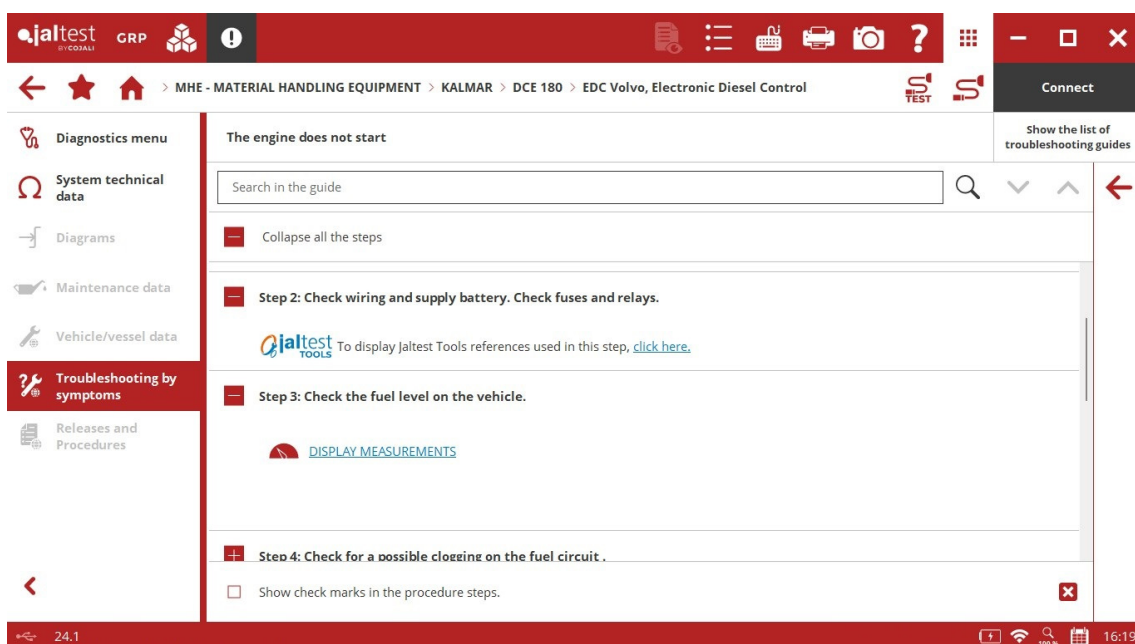
In addition, new wiring diagram configurations available for pallet jacks, stackers and order-picking pallet trucks in **ECE Series, EJD Series, EMC Series, EMD Series, ERC Series, ERD Series, ESC Series, ESD Series** and **ESE Series** families.

LINDE

Wiring diagram configurations of the **LAC** power module for models of **T Series, 1151 Series** or **L Series, 1172 Series** families.

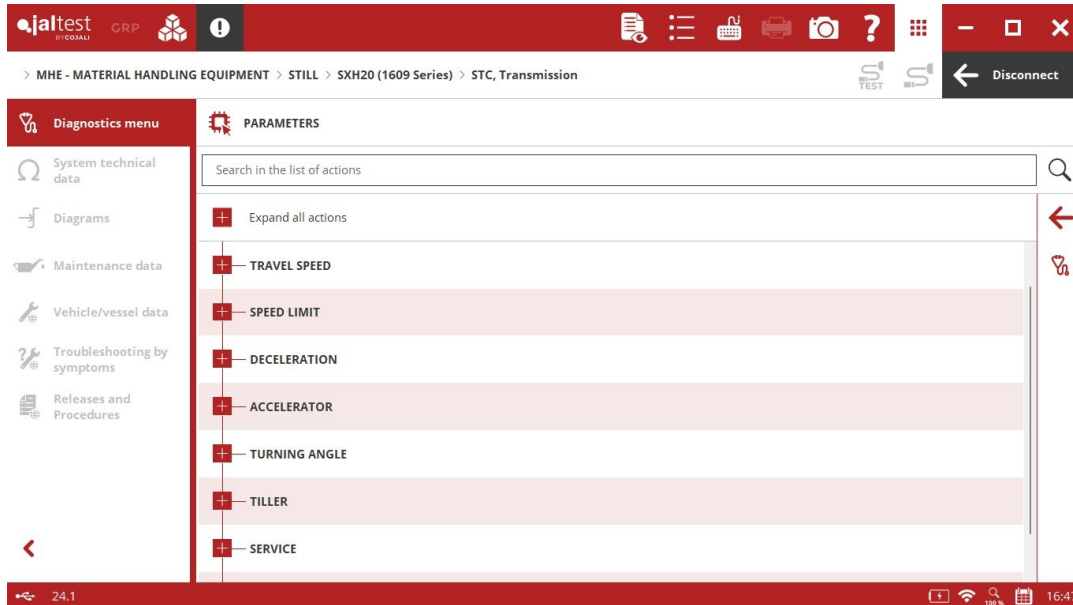
KALMAR

Troubleshooting guides by symptom in the **EDC Volvo** engine control system.

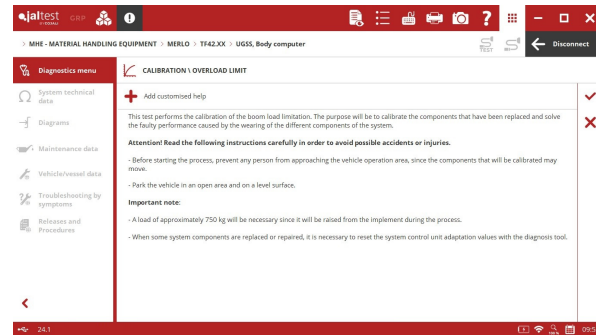
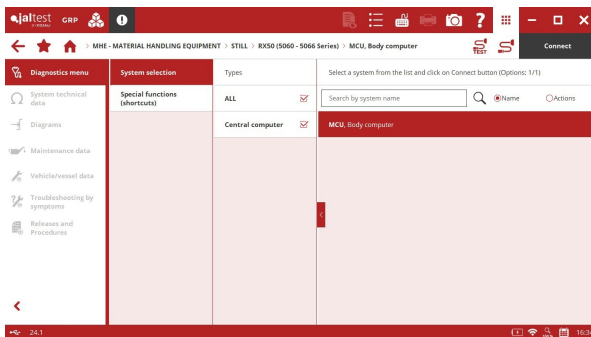


MERLO

UGSS load management system, overload limit calibration.



STILL



⊕ **MCU** central computer in **Rx50** electric forklifts of second generation.

LAC system for electric pallet jacks and stackers, configuration of the control parameters of the travel speed, the acceleration, the safety and the energy saving management, etc.

TOYOTA

Calibration functionalities of the control levers through the **BC** central computer for **8FD Series** and **8FG Series** forklifts with diesel and LPG engines.

