



## INNOVATIONS 24.1

**CV**  
COMMERCIAL  
VEHICLE

**AGV**  
AGRICULTURAL  
EQUIPMENT

**OHV**  
OFF-HIGHWAY  
EQUIPMENT

**MHE**  
MATERIAL  
HANDLING

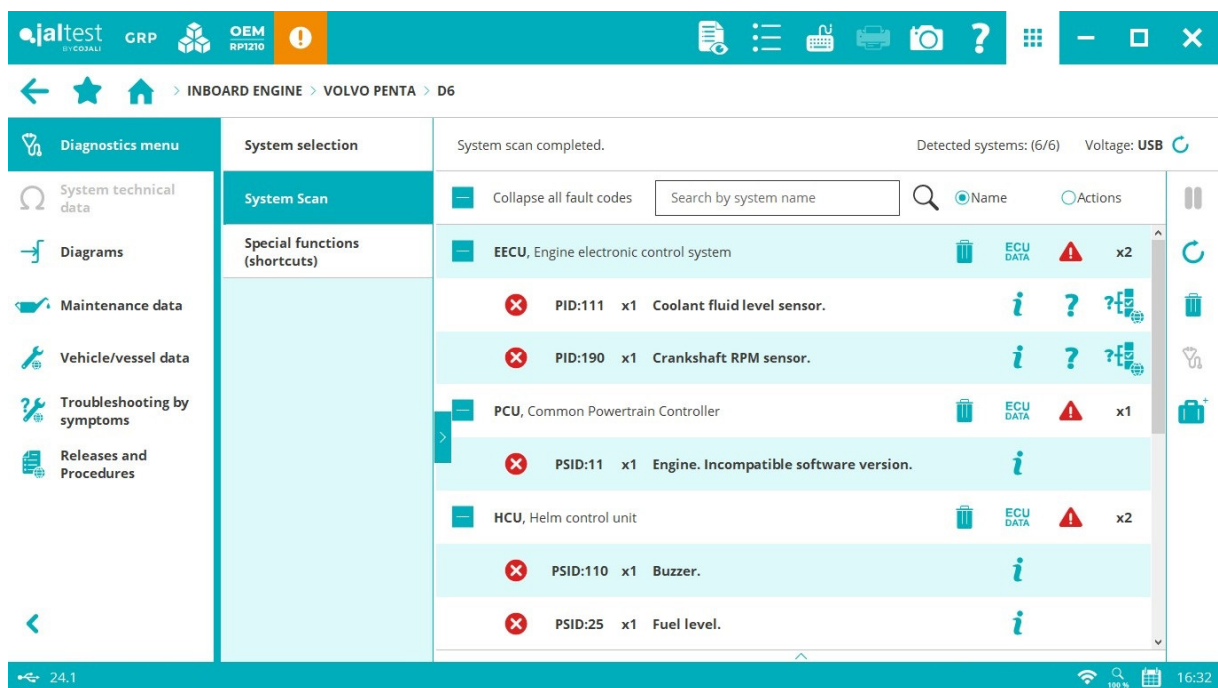
**marine**  
VESSELS

# SOFTWARE INNOVATIONS

The new software version Jaltest 24.1 once again offers more improvements and innovations that consolidate this tool as a benchmark in multi-brand diagnostics for commercial vehicles, agricultural equipment, OHW equipment, material handling equipment and vessels.

With the innovations of the graphic interface, it is possible to:

- Add new formats to the table cells and highlight data.
- Attach the diagnostics report to a Jaltest Feedback.
- Keep the expert mode active in each software login.
- Delete fault codes directly from the results of a system scan process.



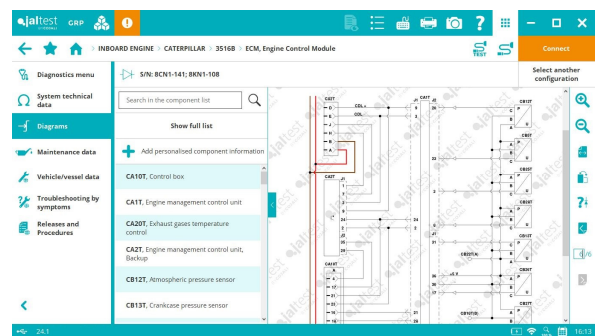
# DIAGNOSTICS AND SYSTEMS

Take into account that this document is only a summary of the most relevant information of this new version. For further information, please visit Jaltest Report.

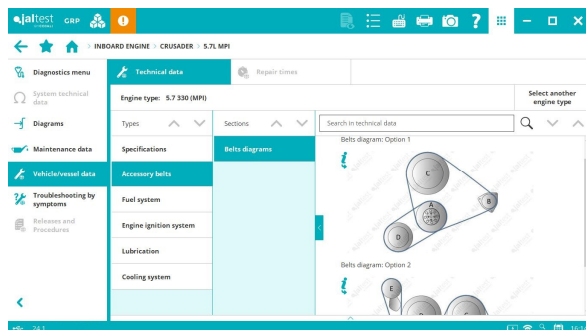
## INBOARD

### CATERPILLAR

Wiring diagram configurations for **3508B**, **3512B** and **3516B** models.



### CRUSADER



New **8.2 MPI** model that includes diagnostics functions in the **MEFI 3-4** engine control system, wiring diagrams and troubleshooting guides.

Vessel technical data and maintenance services in several brand models.

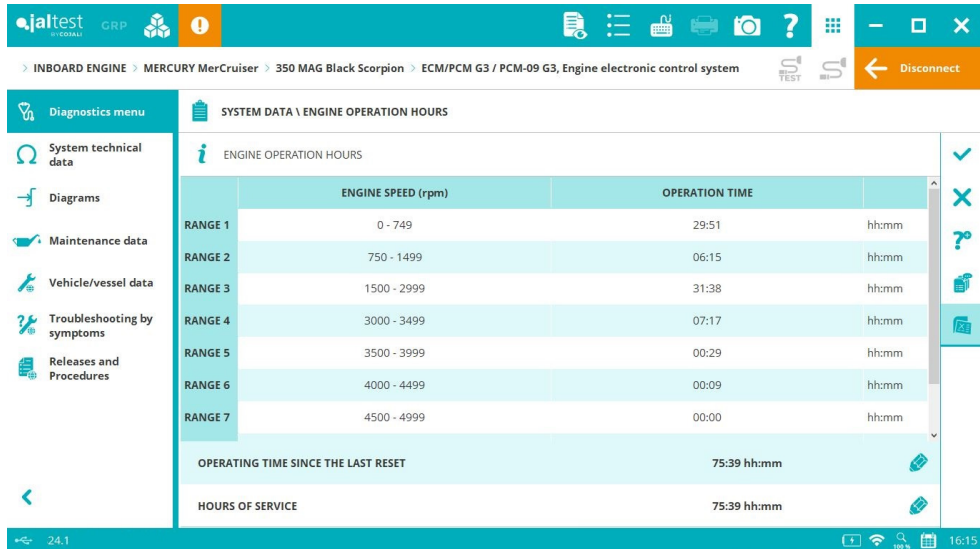
### MAN

New **D2862 LE466/476** model that includes wiring diagrams, vessel technical data and maintenance services.

### MERCURY MerCruiser

System Display in the trim calibration in **PCM**, **PCM-09 G3** and **PCM-112 G3** engine control systems.

Operation data in **ECM** and **PCM** engine control systems.



INBOARD ENGINE > MERCURY MerCruiser > 350 MAG Black Scorpion > ECM/PCM G3 / PCM-09 G3, Engine electronic control system

SYSTEM DATA \ ENGINE OPERATION HOURS

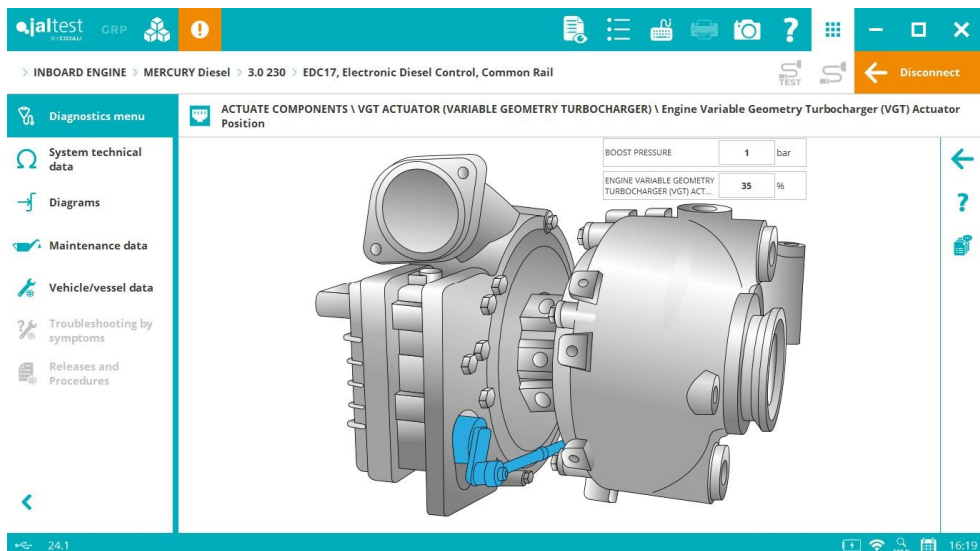
ENGINE OPERATION HOURS

	ENGINE SPEED (rpm)	OPERATION TIME	
RANGE 1	0 - 749	29:51	hh:mm
RANGE 2	750 - 1499	06:15	hh:mm
RANGE 3	1500 - 2999	31:38	hh:mm
RANGE 4	3000 - 3499	07:17	hh:mm
RANGE 5	3500 - 3999	00:29	hh:mm
RANGE 6	4000 - 4499	00:09	hh:mm
RANGE 7	4500 - 4999	00:00	hh:mm
OPERATING TIME SINCE THE LAST RESET		75:39	hh:mm
HOURS OF SERVICE		75:39	hh:mm

## MERCURY DIESEL

New software references in the most up-to-date models of **SIM** and **TVM** systems.

Wiring diagram configurations for models of 3.0 litres equipped with the **EDC 17** engine control system, system that includes the System Display in the VGT activation.

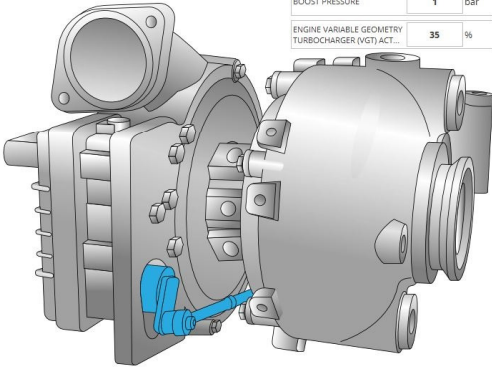


INBOARD ENGINE > MERCURY Diesel > 3.0 230 > EDC17, Electronic Diesel Control, Common Rail

ACTUATE COMPONENTS \ VGT ACTUATOR (VARIABLE GEOMETRY TURBOCHARGER) \ Engine Variable Geometry Turbocharger (VGT) Actuator Position

BOOST PRESSURE: 1 bar

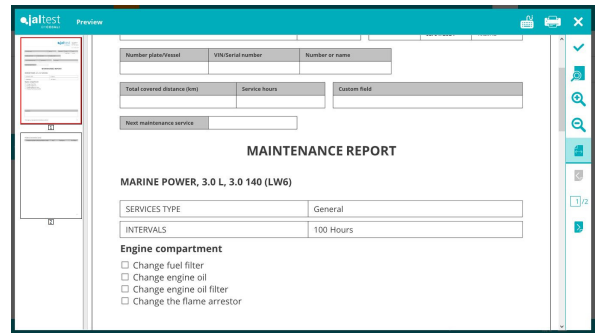
ENGINE VARIABLE GEOMETRY TURBOCHARGER (VGT) ACT.: 35 %



## PCM

New models equipped with the **ECM GCP** engine control system such as **6.0L HO MPI**, **XS7**, **7.4L MPI**, **ZZ8S** or **ZR7**.

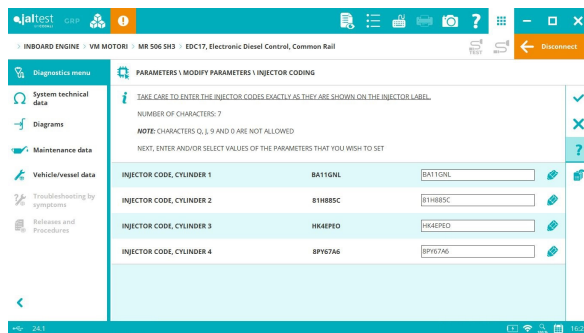
Vessel technical data and maintenance services in several brand models.



## MARINE POWER

New software references in brand models.

Vessel technical data and maintenance services in several brand models.



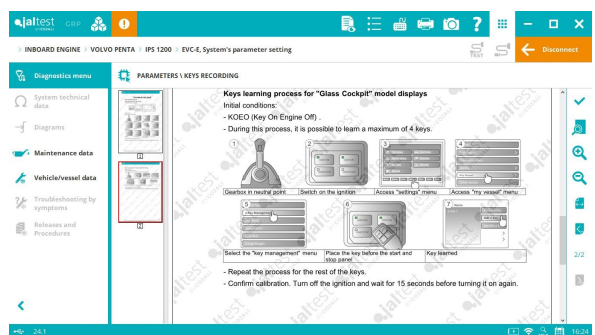
## VM MOTORI

⊕ **EDC 17** engine control system in **MR506 SH3** and **MR 506 SS3** models.

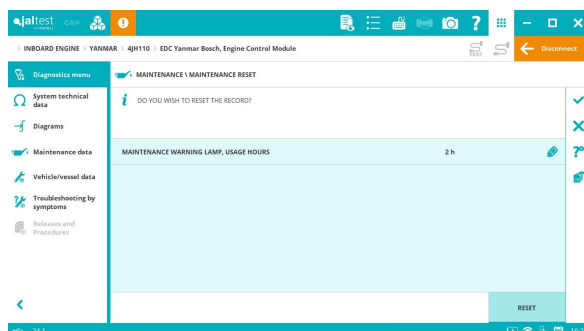
## VOLVO PENTA

Coding of electronic keys (e-Key) of **EVC D** and **EVC E** systems.

Component technical data in **SUS** and **SCU** systems of **D5**, **D6** and **D7** models.



## YANMAR



**Yanmar Bosch** engine control system, idle modification, maintenance reset, injector coding and new operation data.

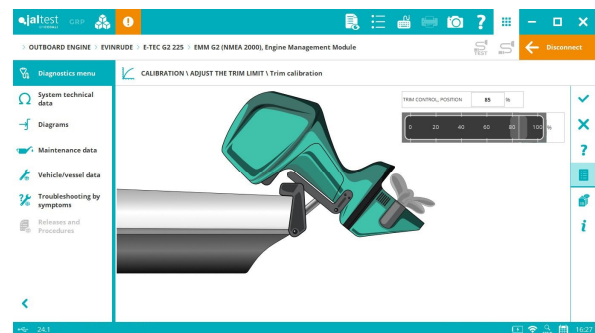
## OBD-II

In the “Other connection options” section, the OBD-M brand includes the **OBD-II** system in order to have diagnostics coverage in those automotive engines under OBD-II regulation, and which are also used in the nautical segment: **VW, Hyundai, Ford, Bosch** systems, **Delphi** systems, etc.

## OUTBOARD

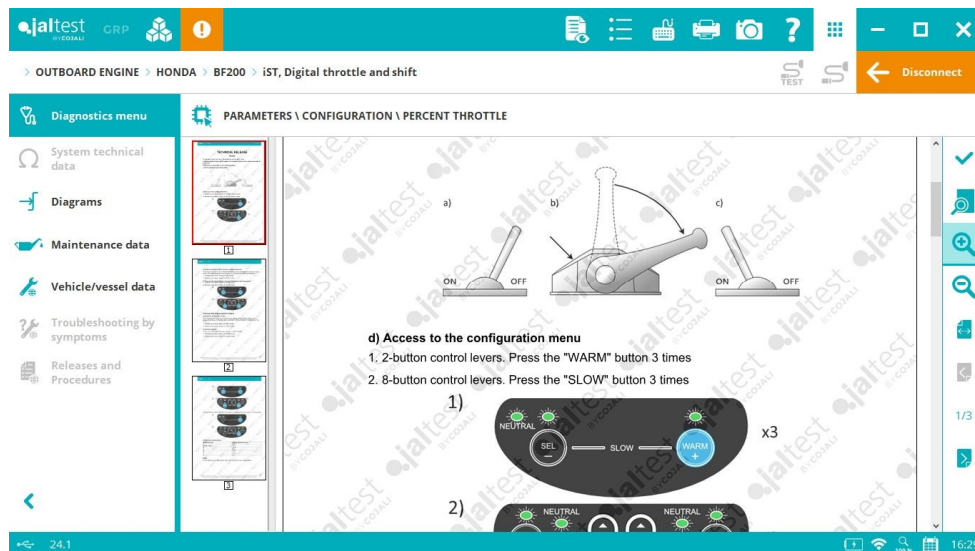
### EVINRUDE

System Display in the trim calibration in the following systems: **EMM** and **EMM G2**.



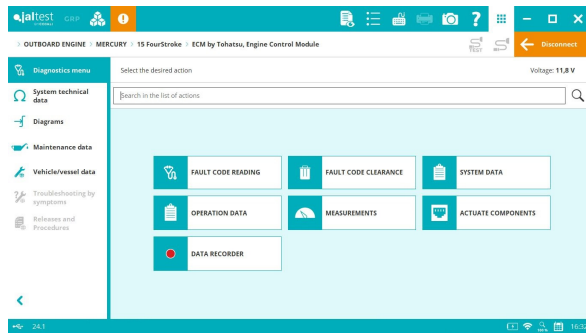
### HONDA

⊕ **IST** lever electronic control system that includes manual diagnostics, acceleration percent modification, cold start activation and default value reset among other functionalities. The system is available for **BF200, BF225** and **BF250** models.



## MERCURY

⊕ **ECM by Tohatsu** engine control system in the new **15, 20 FourStroke** and **15 SeaPro** models. The connection is performed through new diagnostics cables.



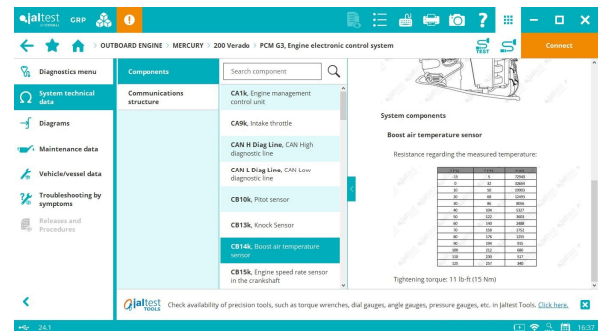
JDC 100 + JDC 632.9



New vessel technical data and maintenance services in several brand models.

Wiring diagram configurations in **135, 200 FourStroke** or **400R Verado** models, among others.

Operation data in **ECM G3** and **PCM G3** engine control systems.



System Display in the trim calibration and new FFD in diagnostics in **PCM, ECM G3, PCM-09 G3** and **PCM-112 G3** engine control systems.

## SUZUKI

New software references in brand models.

## TOHATSU

⊕ **ECM** engine control system in **MFS 9.9, MFS 15** and **MFS 20** models. The system includes the activation of the idle air control valve, the fuel pump or the injectors, among other functions.

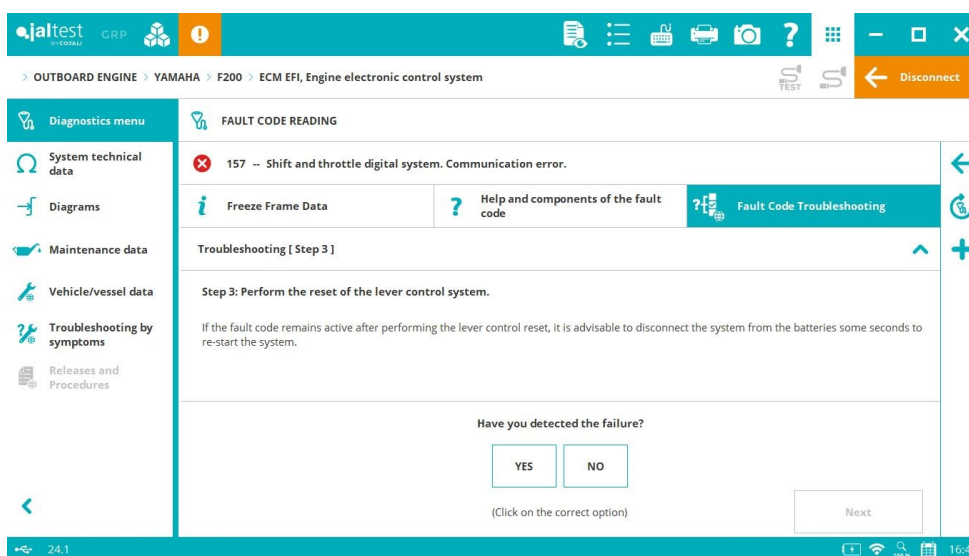
⊕ New **JDC 632A** and **JDC 632.9** diagnostics cables for the **ECM** engine control system of 9.9, 15 and 20 HP.

## YAMAHA

System Display in the trim calibration for **F200, F225, F250, F275, F300, F350, F375** and **F425** models.



## SMART guides



## STATIONARY ENGINE

Overall, technical data in new **SCANIA** engine types has been added.

### CATERPILLAR

⊕ **C-27 / C-32** (on SAE J1939) engine control system.

**C-9.3B** (on SAE J1939) engine control system, activations, checks, parameters and maintenance service operations.

**C-2.2** (on SAE J1939) engine control system, injector coding and Exhaust Gas Recirculation reset.

New **fault code troubleshooting guides** in **C-2.8** and **C-3.6** engine control systems.

### DEUTZ

**EMR4 EDC17 CV52** (on SAE J1939) control system of **TCD12.0** and **TCD16.0** engines, compression test, injector coding, Pressure Relief Valve reset and ZFL correction values adjustment of the injectors.

**EMR5 EDC MD1** (on SAE J1939) engine control system, System Display, activations, system checks and maintenance service operations.



## IVECO-FPT

**EDC MD1 CS069** engine control system in **F34 (F5)** and **F36 (F5)** (on SAE J1939), AdBlue/DEF dosing valve check, injector coding, maintenance services in the exhaust gas aftertreatment system and component replacement operations.

## ISUZU

**6WG1** (on SAE J1939) engine control system, forced and slow regeneration of the Diesel Particulate Filter and oil change reset.

Control system (on SAE J1939) of **4HK1**, **4JJ1** and **6HK1** engines, System Display during the recovery processes of the exhaust gas aftertreatment system.

## LIEBHERR

**ECU2-HD** (on UDS) engine control system, activations, system checks and the special function of fault code clearance of the aftertreatment system.

**EDC17 CV41** (on SAE J1939) engine control system, recovery process of the exhaust gas aftertreatment system.

## VOLVO PENTA

**Troubleshooting guides by symptom** in the **EDC Euro 4/5 (Tier 2)** (on SAE J1708) engine control system.