



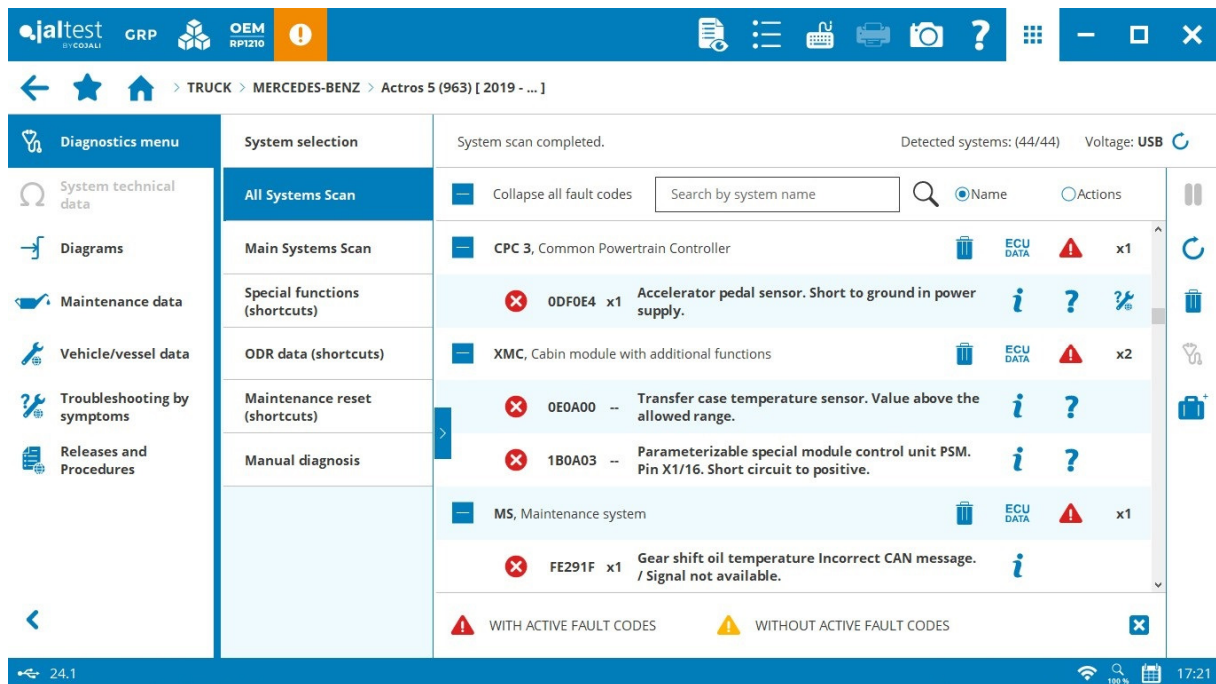
INNOVATIONS 24.1

SOFTWARE INNOVATIONS

The new software version Jaltest 24.1 once again offers more improvements and innovations that consolidate this tool as a benchmark in multi-brand diagnostics for commercial vehicles, agricultural equipment, OHW equipment, material handling equipment and vessels.

With the innovations of the graphic interface, it is possible to:

- Add new formats to the table cells and highlight data.
- Attach the diagnostics report to a Jaltest Feedback.
- Keep the expert mode active in each software login.
- Delete fault codes directly from the results of a system scan process.



BRANDS AND MODELS

Take into account that this document is only a summary of the most relevant information of this new version. For further information, please visit Jaltest Report.

Some of the new models and brands of this version are listed below.

ASTRA

HD9 Euro 6-E

DENNIS EAGLE

Elite 6 Asian-Pacific

FIAT

Dobló 1.6 Cargo/Multijet, engine: 940 C1/263 A7/263 A8/263 A9 [2016 - 2019]

Ducato 2.2 BlueHDi, engine: DW12 [2019 - ...]

FORD

Ranger 2.0 EcoBlue, engine: P02X [2022 - ...]

FOTON

Atlas, engine: Cummins

ISUZU

ERGA MIO, engine: 4HK1

mitsubishi fuso

Canter, engine: 4P10 Euro 6E

SCANIA

K 320 Hybrid

TOYOTA

Hilux 2.8, engine: 1GDFTV [2020 - ...]

Hilux 2.4, engine: 2GDFTV [2020 - ...]

UD TRUCKS

Condor, engine: J07E

VOLKSWAGEN

Crafter 35/50/55 2.0 TDI, engine: DREB/DREC [2021 - ...]

Caddy 2.0 TDI, engine: DTRC/DTRE/DTRF [2020 - ...]

VOLVO

FH FM/FMX Electric V4 [2023 - ...]

B5TL

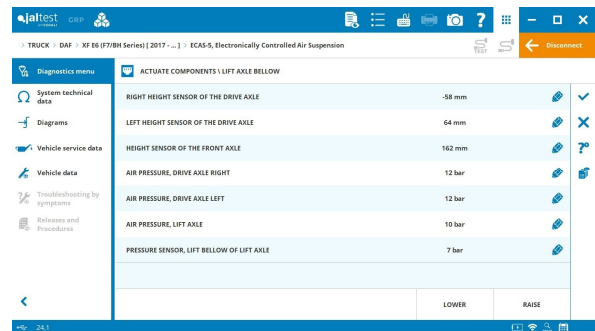
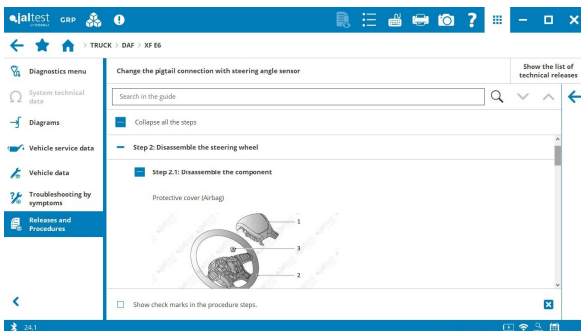
DIAGNOSTICS AND SYSTEMS

TRUCK

DAF

SAC compressed air treatment and generation system, control unit programming through **Jaltest Central Services** support.

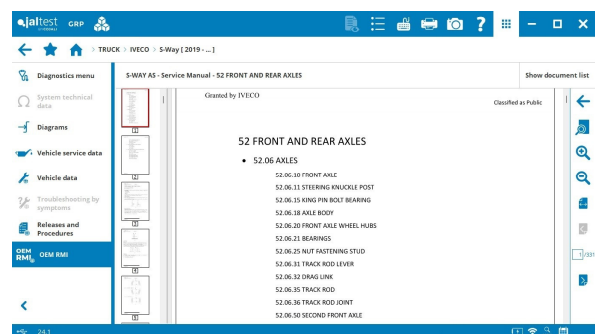
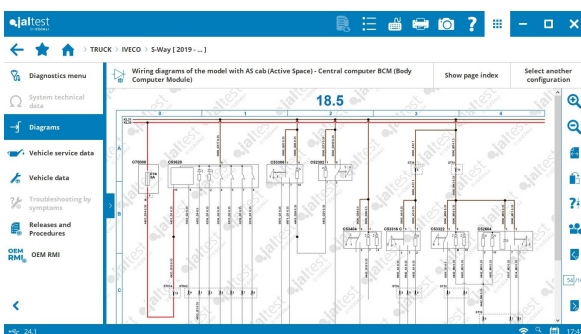
ECAS-5 suspension control system, activation of the front axle suspension in the **XF E6** model, model in which the replacement procedure of the steering angle sensor has also been added.



IVECO

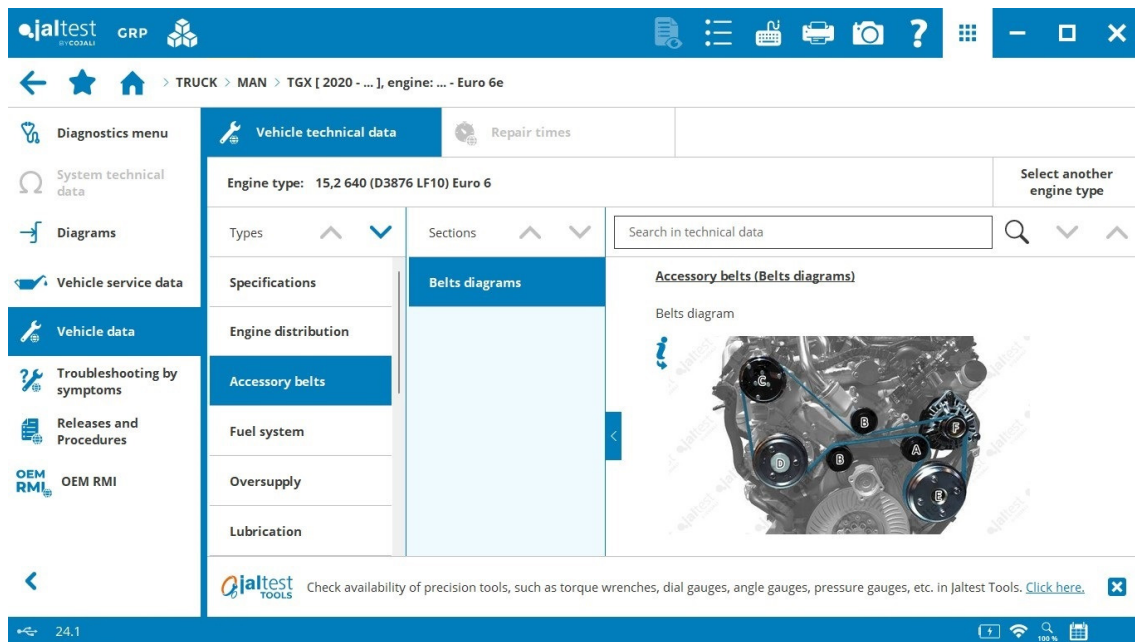
Wiring diagrams by model in **S-Way, T-Way, X-Way** and **Stralis Euro 6**.

OEM RMI technical information of the brand.



MAN

Technical data in **TG3 Series** models with new vehicle data for **15,2 540/640** and **6,9 250** configurations, among others.



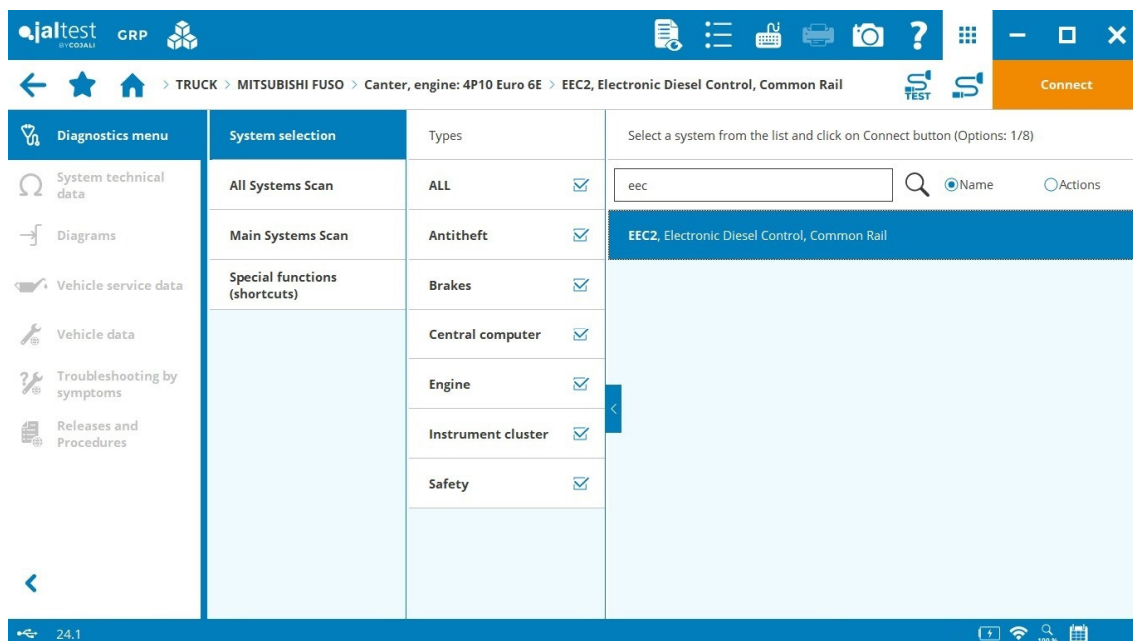
MERCEDES-BENZ

Control unit programming through **Jaltest Central Services** support in the **Actros 4** model.

Calibration process update of the **MDD** and **MDP** wing mirror cameras for those variants in **Actros 5** and **Arocs 5** models for which calibration templates are not required.

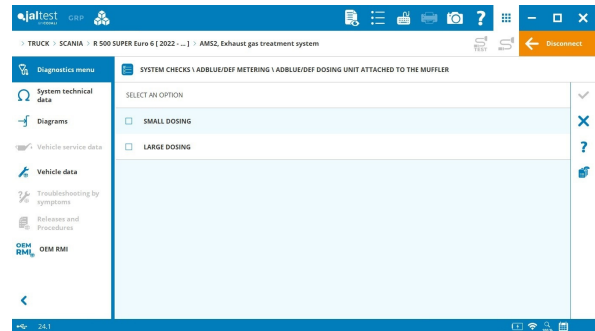
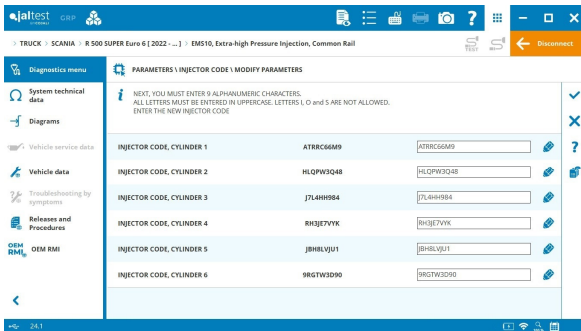
MITSUBISHI FUSO

⊕ **EEC2** engine control system in the **Canter Euro 6E** model.



SCANIA

EMS10 and **AMS2** engine control and exhaust gas aftertreatment systems in models of **SUPER** and **Euro 6E** ranges, advanced functions such as the cylinder cut-out, injector coding, AdBlue/DEF leak test or AdBlue/DEF dosing test, among others.

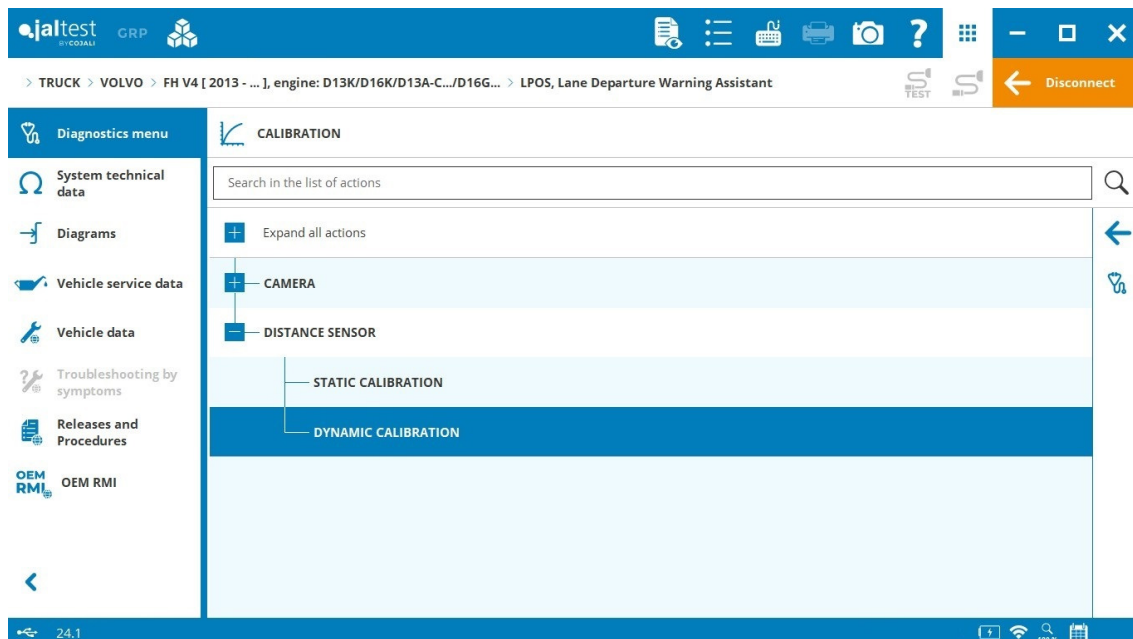


TMS3 transmission, gear control check, clutch adaptation after replacement, accelerometer calibration and parameter modifications such as the speed limit modification.

VOLVO

In vehicles with **V3** and **V4 technology**:

ADAS LPOS lane departure warning assistant, system calibration in dynamic mode.



BUS

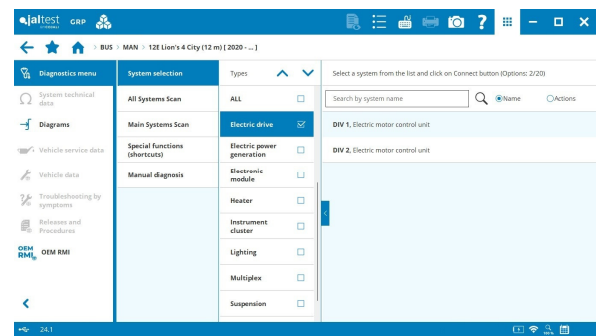
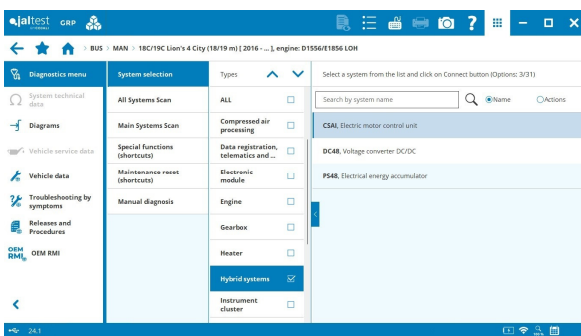
IRIZAR

⊕ **DICO** electric motor management system and **Inverter 1 and 2** inverter control systems in **ie bus/i2e** and **ie tram** electric vehicles.

MAN

⊕ **DIV1** and **DIV 2** electric motor management systems and **ePTM** Common Powertrain Controller in **Lion's 4 City** models.

⊕ **CSAI** electric motor management system, **DC48** voltage converter and **PS48** electrical energy accumulator in **12C, 18C, 42C** and **43C** hybrid city buses.



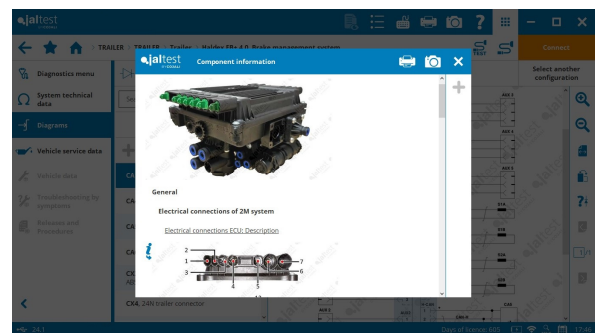
MERCEDES-BENZ

⊕ Electric propulsion control systems in the **eCITARO** model.

TRAILER

HALDEX

⊕ **Haldex EB+ 4.0** EBS brake control system that includes the parameter copying and pasting, modulator checks, brake pressure simulation, as well as wiring diagrams and technical information of the system.



WABCO

EBS E brake control system, operation data related to the fault code history and the event recorder.

	IDENTIFICATION CODE	FAULT CODE	FMI	ODOMETER	DATE AND TIME - OPE...	BCP (BRAKE C
01	03.09	Wheel C speed sensor.	Signal loss.	52072.7	2018-10-01 09:33	0.00
02	04.05	Wheel D speed sensor.	Interrupted line (break).	52072.7	2018-10-01 09:33	0.00
03	61.06	EBS module / back-up ...	Current too high or sh...	52072.7	2018-10-01 09:33	0.00
04	69.04	Suspension pressure s...	Low voltage or short ci...	52072.7	2018-10-01 09:33	0.00
05	69.04	Suspension pressure s...	Low voltage or short ci...	52072.7	2018-10-01 09:33	0.00
06	69.04	Suspension pressure s...	Low voltage or short ci...	52072.7	2018-10-01 09:33	0.00
07	69.04	Suspension pressure s...	Low voltage or short ci...	52072.7	2018-10-01 09:33	0.00
08	80.04	Internal brake signal p...	Low voltage or short ci...	52072.7	2018-10-01 09:33	0.00
09	80.04	Internal brake signal p...	Low voltage or short ci...	52072.7	2018-10-01 09:33	0.00
10	144.12	Pneumatic air supply li		52072.7	2018-10-01 09:33	0.00

LIGHT COMMERCIAL VEHICLE

IVECO

MD1 engine control system in the **Daily [2021 - ...]** model, maintenance reset of NOx sensors of the central area of the catalytic converter and after it.

BSM brake control system in the **Daily [2014 - ...]** model, reset of the electric parking brake system that deletes the C1055-9A and C1055-71 fault codes.

Wiring diagrams by model in **Daily [2021 - ...]**.

Search in the list of actions

- Collapsar all actions
- Vehicle service data
 - NITROGEN OXIDES NOx SENSORS
 - BEFORE THE CATALYTIC CONVERTER
 - CENTRAL AREA OF THE CATALYTIC CONVERTER
 - AFTER THE CATALYTIC CONVERTER
 - LAMBDA/O2 SENSOR
 - EGR VALVE
 - FLOWMETER

MAINTENANCE \ ELECTRIC PARKING BRAKE \ SYSTEM RESET

Important note

This process is necessary to make the fault code clearance related to the component. The fault codes that may appear are the following:

- C1055-9A
- C1055-71

NISSAN

⊕ **A/C 4.0** air conditioning control system, **MFC 4.0** multifunction camera and **PDC** parking help system in **NP300** models.

PSA GROUP

⊕ **Service 7.0** maintenance system in **Expert/Jumpy [K0]** and **Berlingo/Partner [K9]** models.

MANUFACTURER

CUMMINS

Update of the Cummins control unit revision through **Jaltest Central Services** support.

Extended coverage in all **CUMMINS** systems, especially for Euro 6 systems with more than 300 new references and variants available.

Propulsion system of **electric vehicles**, **BES EV CM2450** electric actuation control unit, parameters of client and vehicle information.

B4.5/B6.7 CM2350 engine control system, system checks to verify the intake air control and the NOx sensor performance after the catalytic converter.

Technical data and procedures of the vehicle, such as the valve clearance adjustment, the adjustments of the fuel pump and the oil filter or the injector replacement for **B4.5/5.6/5.9/6.3/6.7 B181 CM2670** engines.

