



INNOVATIONS 23.3

SOFTWARE INNOVATIONS

The new software version Jaltest 23.3 once again offers more improvements and innovations that consolidate this tool as a benchmark in multi-brand diagnostics for commercial vehicles, agricultural equipment, OHW equipment, material handling equipment and vessels.

With the innovations of the graphic interface, it is possible to:

- Show the battery voltage during the system scan processes.
- Configure the fault code display during the system scan processes.
- Hide the information panel in action steps with measurements.
- Restart the connection when losing the communication with systems in different sections of the application.
- Customise connection images.
- Configure measurement groups in the data recorder function.

In addition, with GRP it is possible to associate diagnostics reports to number plates and/or VIN chassis numbers that do not belong to any vehicle from the list.

BRANDS AND MODELS

Take into account that this document is only a summary of the most relevant information of this new version. For further information, please visit Jaltest Report.

OHW - HEAVY EQUIPMENT

This version includes **DEVELON** and **MST** brands.

CASE CE

New models for **CX Series** crawl excavators.

DYNAPAC

9 new models.

OHW - COMPACT EQUIPMENT

New brands such as **AVANT**, **DEVELON**, **MST** and **THALER** have been added, and the number of models in **CASE CE**, **KUBOTA** and **TAKEUCHI** brands has been increased.

STATIONARY ENGINE

New models in **DEUTZ**, **HATZ** and **PERKINS** brands.

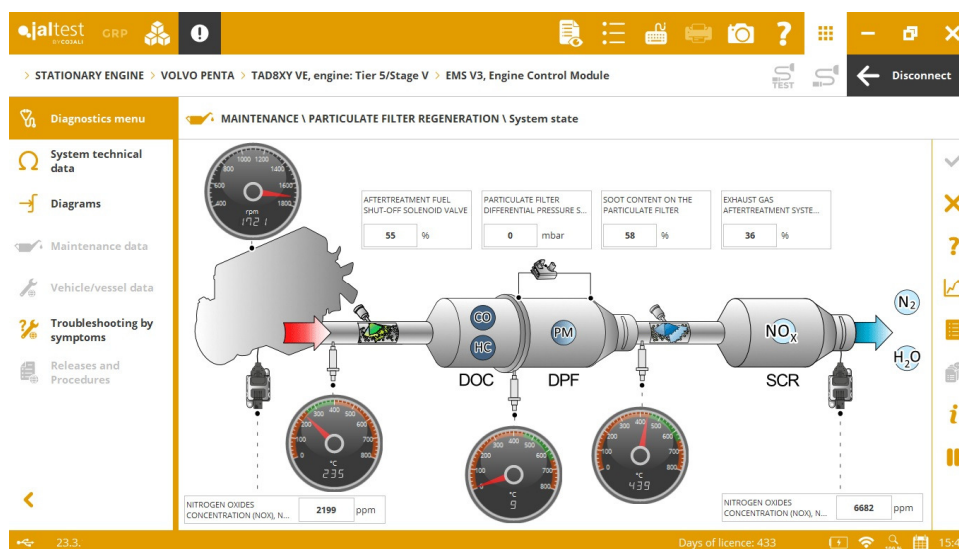
MULTI-PURPOSE VEHICLE

This version includes the **LADOG** brand and new models in the **BUCHER** brand.

DIAGNOSTICS AND SYSTEMS

Take into account that this document is only a summary of the most relevant information of this new version. For further information, please visit Jaltest Report.

It is important to note the development of new advanced actions such as the Diesel Particulate filter regeneration for the **EMS V3** engine control system in **Stage V VOLVO PENTA** engines. This system is available for brands such as **GRADALL**, **KALMAR** or **TERBERG**, among others.



OHV - HEAVY EQUIPMENT

BELL

New wiring diagram configurations available for **D Series** models.

BOMAG

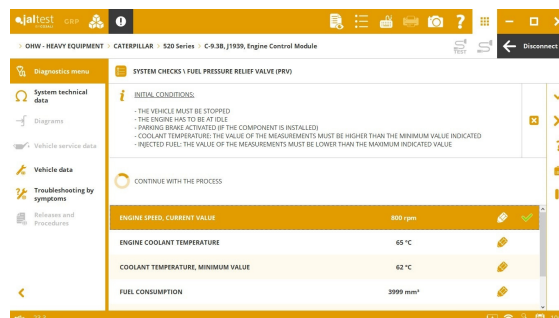
⊕ **EMR4 EDC17 CV52** engine control system for **TCD12.0** (on SAE J1939) engines.

CATERPILLAR

⊕ **MCM** (on SAE J1939) central computer for **D Series** models.

C-9.3B (on SAE J1939) engine control system, checks and maintenance services.

New wiring diagram configurations in the **C-9.3B** engine control system available for **D6, D7, 960** and **970 Series** models.

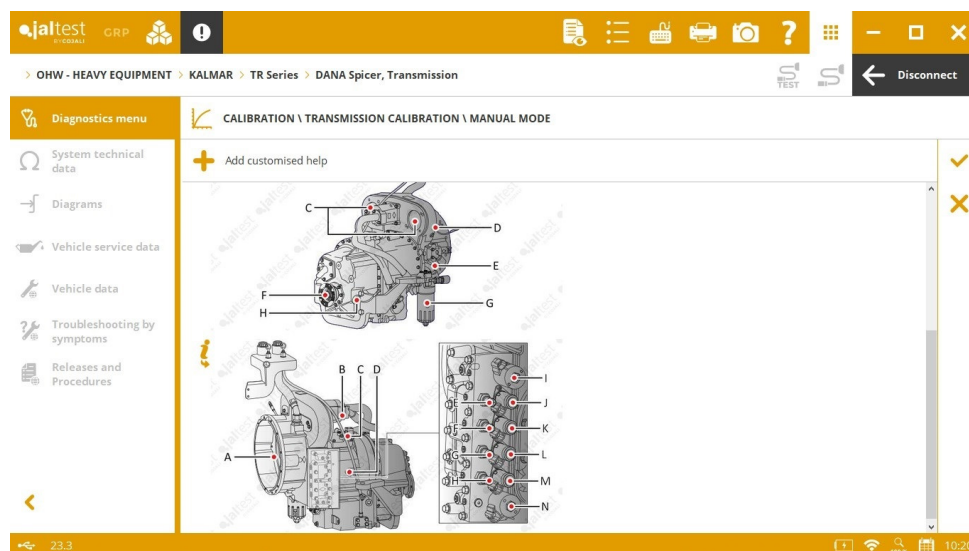


JOHN DEERE

VCU central computer for **944K** wheel loaders, calibrations.

KALMAR

⊕ **DANA SPICER** transmission for **TR Series** and **TT Series** models.



LIEBHERR

⊕ **ECU3** (on UDS) engine control system.

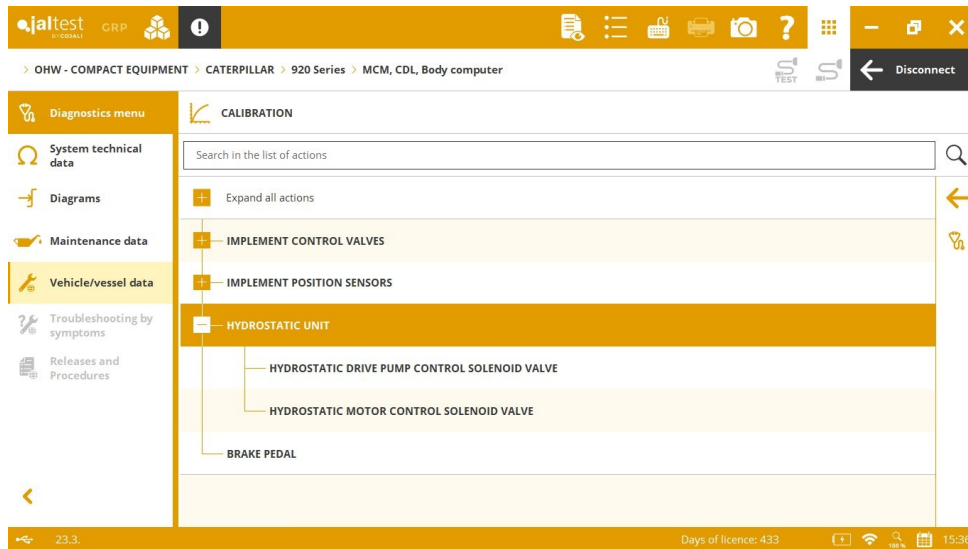
SANDVIK

EMR4 EDC17 CV52 (on SAE J1939) engine control system, check of the Diesel Particulate Filter heating, Mode 1 and Mode 2.

OHV -COMPACT EQUIPMENT

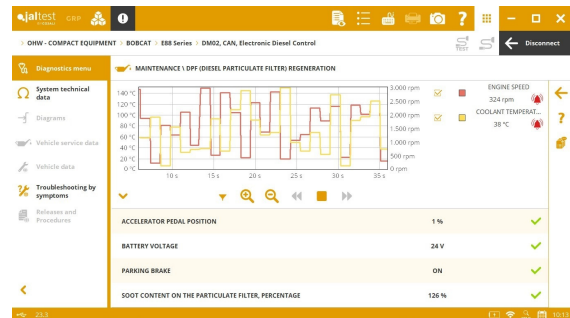
Take into account that this document is only a summary of the most relevant information of this new version. For further information, please visit Jaltest Report and coverage on Jaltest website.

It is important to note the development of new advanced actions in the **MCM** central computer of **CATERPILLAR** for **900 Series** wheel loaders.

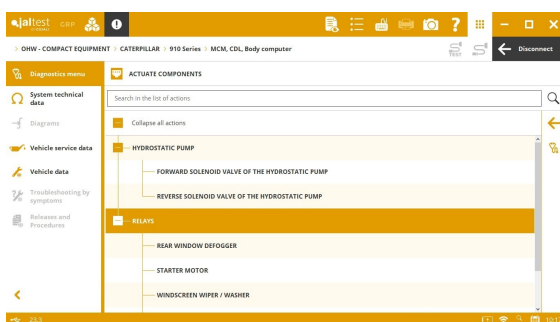


BOBCAT

DOOSAN EDC DM02 / DM03 (on SAE J1939) engine control system, actuations, checks of the AdBlue/DEF dosing valve and the AdBlue/DEF pump motor, injector coding and Diesel Particulate Filter regeneration. In addition, new wiring diagram configurations available.



CATERPILLAR



+ **MCM** central computer for **D Series** (on SAE J1939) models.

MCM (on CDL) central computer, actuations, checks and calibrations of the hydrostatic Unit.

DOOSAN

EDC DM02 / DM03 (on SAE J1939) engine control system, actuations, checks of the AdBlue/DEF dosing valve and the AdBlue/DEF pump motor, injector coding and Diesel Particulate Filter regeneration. In addition, new wiring diagram configurations available for the **DX50W-7** model.

JOHN DEERE

New wiring diagrams in the **TCU** transmission available for the **524L** model and the **VCU** central computer in backhoe loaders for **L, K, SL** and **SK** series.

KOMATSU

CUMMINS 4D95 3.3 CM2350 (on SAE J1939) engine control system, injector coding.

NEW HOLLAND

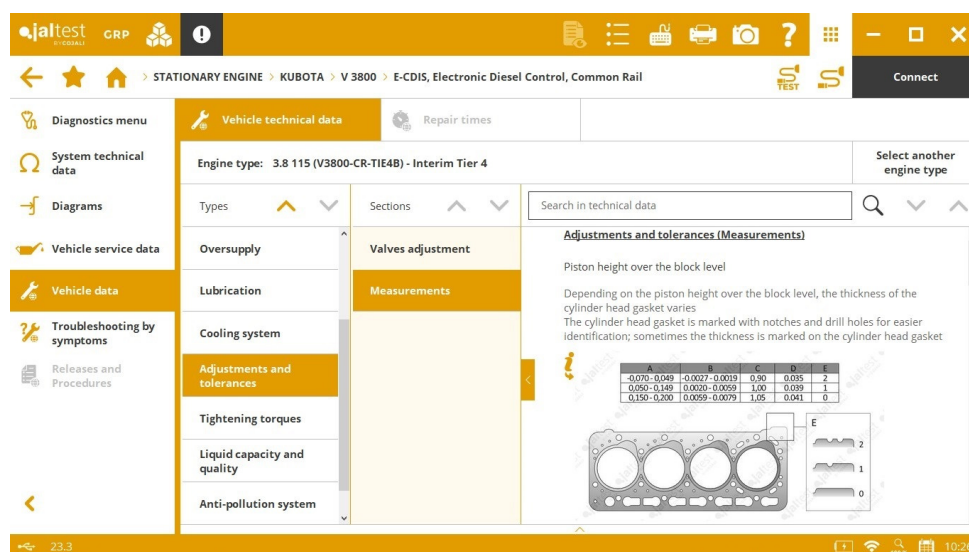
New wiring diagram configurations available for **300 Series** wheel loaders and skid-steer loaders.

WACKER NEUSON

VCU central computer for electric wheel loaders, advanced functions such as the maintenance reset.

STATIONARY ENGINE

Overall, technical data in new **KUBOTA** engine types has been added.



CATERPILLAR

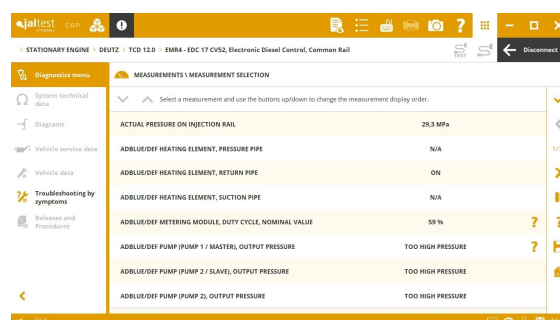
C-9.3B (on SAE J1939) engine control system, checks and maintenance services.

CUMMINS

X15 (on SAE J1939) engine control system, operation data and fuel consumption, checks, parameters, operating test of the exhaust gas aftertreatment system and injector coding.

DEUTZ

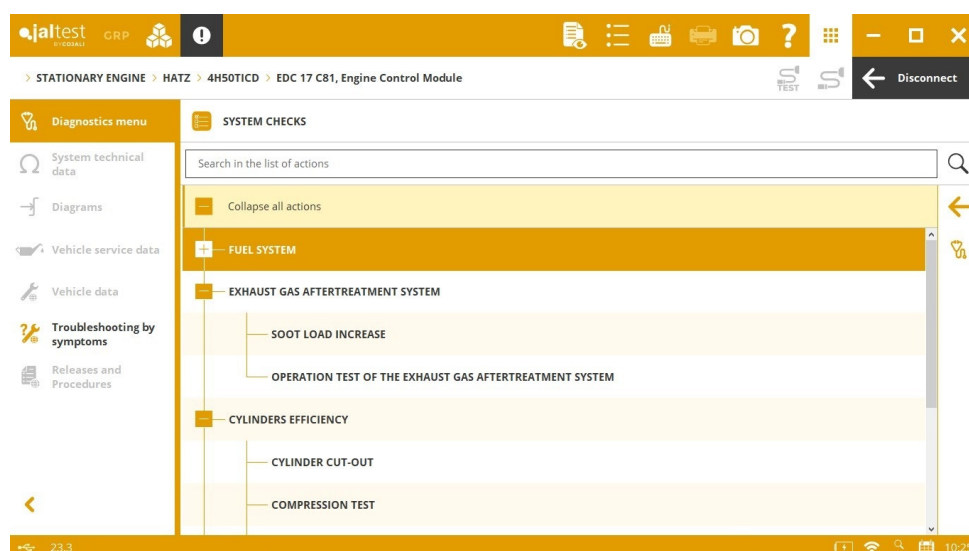
⊕ **EMR4 EDC17 CV52** (on SAE J1939) engine control system for **TCD12.0** and **TCD16.0** engines.



HATZ

⊕ **EDC17 C81** (on SAE J1939) engine control system.

New wiring diagram configurations available for the **4H50TIC** model.



VM MOTORI

New wiring diagram configurations of the engine control system and the exhaust gas aftertreatment system available for **R756EU5**, **R754EU5**, **R754EU4**, **R756EU4**, **R754IE4** and **R754/R756 (Stage IV/EU6)** models.

VOLVO PENTA

EMS V3 Stage V engine control system, Diesel Particulate Filter regeneration.

YANMAR

Fault code troubleshooting guides for **Bosch** and **Denso** engine control systems.

MULTI-PURPOSE VEHICLE

Overall, extended diagnostics coverage for engine control systems. It is important to note new functionalities in the **VOLKSWAGEN EDC VW (CPYA)** system in **AUSA**, **CMAR** and **SCHMIDT** brands.

