



## INNOVATIONS 23.3

# SOFTWARE INNOVATIONS

The new software version Jaltest 23.3 once again offers more improvements and innovations that consolidate this tool as a benchmark in multi-brand diagnostics for commercial vehicles, agricultural equipment, OHW equipment, material handling equipment and vessels.

With the innovations of the graphic interface, it is possible to:

- Show the battery voltage during the system scan processes.
- Configure the fault code display during the system scan processes.
- Hide the information panel in action steps with measurements.
- Restart the connection when losing the communication with systems in different sections of the application.
- Customise connection images.
- Configure measurement groups in the data recorder function.

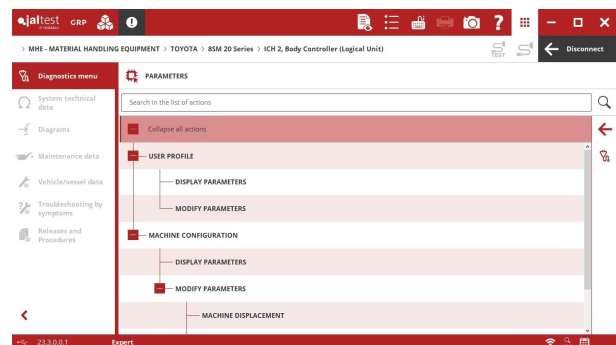
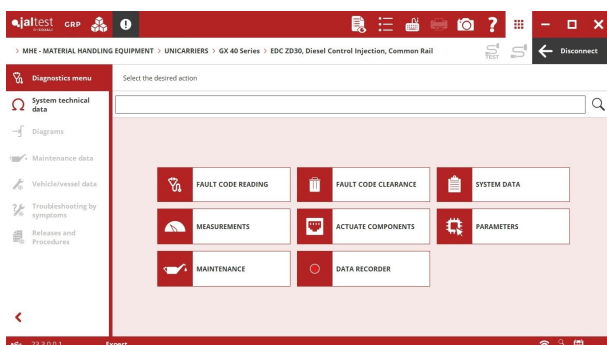
In addition, with GRP it is possible to associate diagnostics reports to number plates and/or VIN chassis numbers that do not belong to any vehicle from the list.

# BRANDS AND MODELS

Take into account that this document is only a summary of the most relevant information of this new version. For further information, please visit Jaltest Report.

The new brands in Jaltest are listed below: **BAOLI**, **NISSAN**, **SELIC**, **THALER**, **TCM** and **ZPMC**.

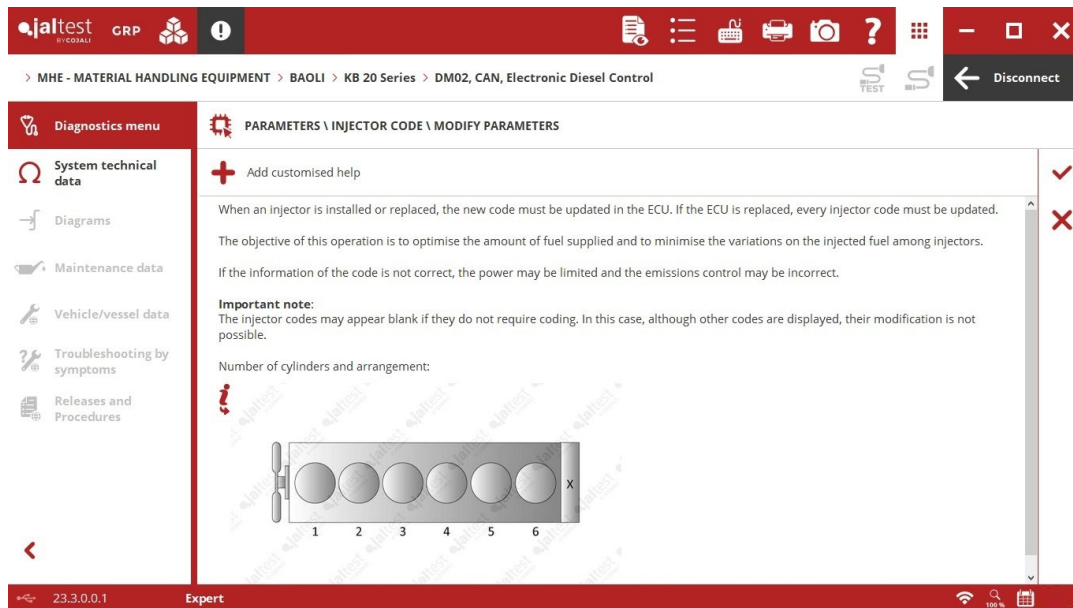
In addition, the number of models in the following brands has increased: **BOBCAT** (TR Series family), **BT** (Réflex, Option, Vector and Levio families), **JUNGHEINRICH** (ECE, EMC and ERC families), **MANITOU** and **UNICARRIERS**.



# DIAGNOSTICS AND SYSTEMS

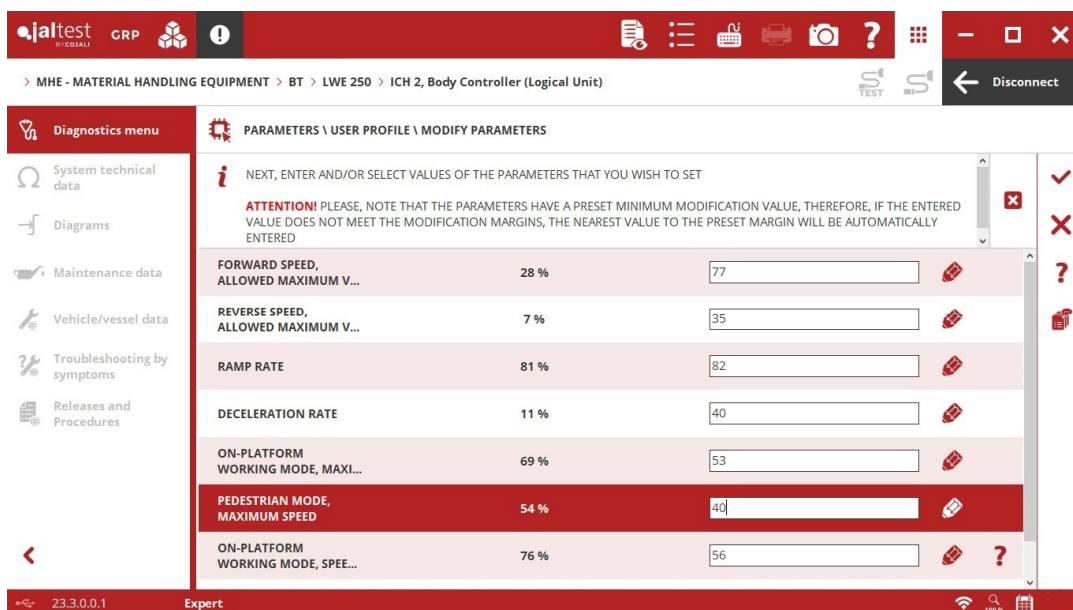
## BAOLI

**DM02/03** Stage V engine control system, injector coding.

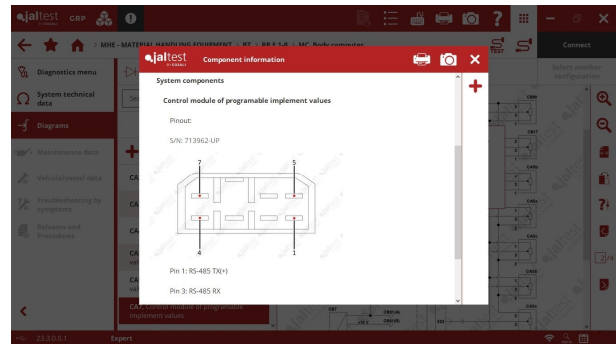
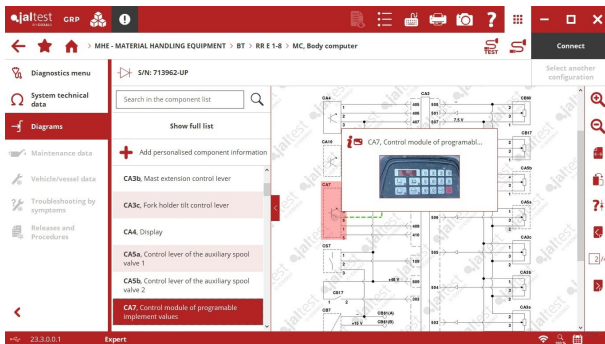


## BT

⊕ **ICH2** central computer that includes advanced functions of parameter configuration and maintenance reset for electric machines such as pallet jacks or stackers.



In addition, new wiring diagram configurations of the **MC** central computer available for retractable machines.

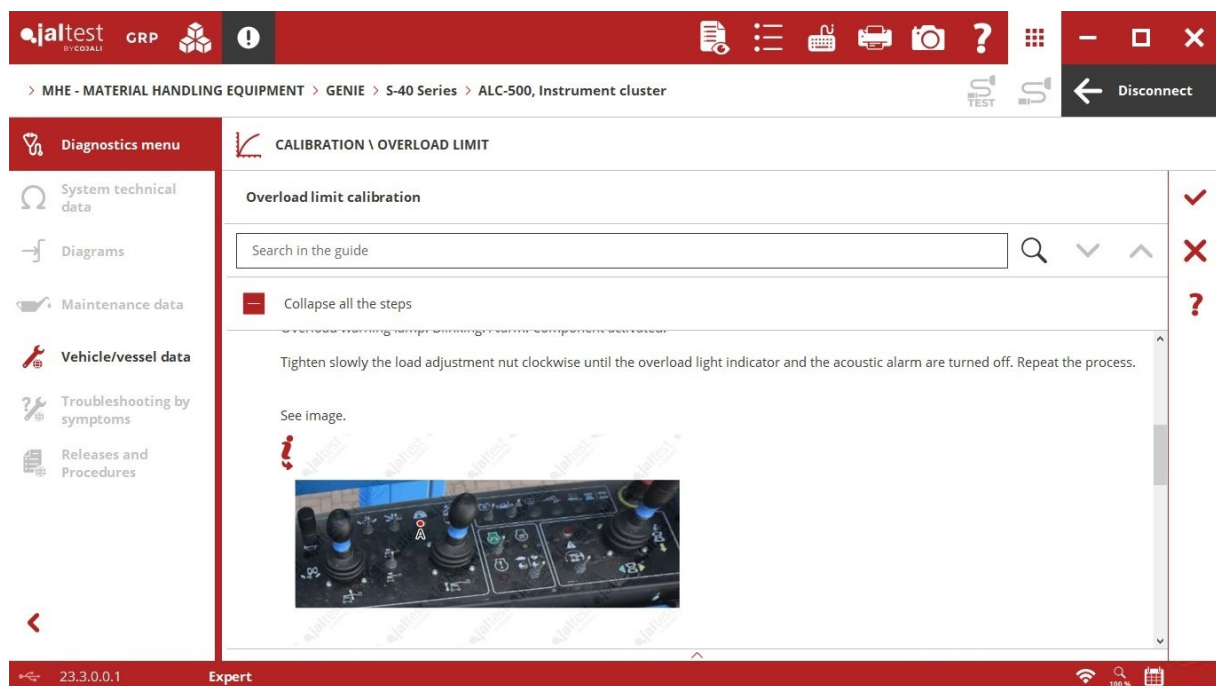


## CURTIS

**CPM** power module with parameter modification for the different configurations of the **1212** and **1230** power modules.

## GENIE

⊕ **ALC-500** instrument cluster for models of the **S series** lift platform, calibration processes of the joystick or the overload limit.

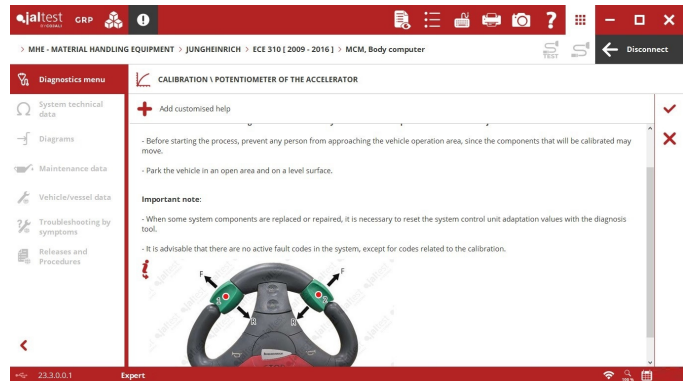


## JUNGHEINRICH

**MCM** central computer for models of **EJC series** or **EJD series** electric stackers, modification of driving program, traction speed, equipment, etc.

⊕ **MCM** central computer for **ECE series** models, parameter modification, steering calibration, tiller, etc.

In addition, new wiring diagram configurations of the **MCM** central computer available for the families of **EJE series, ERE series, EJC Series** pallet jacks and of the **Perkins 1104D** engine control system for models of the **DFG Series** family.



## LINDE

**EDC VW (CPYA)** engine control system for models of internal combustion, parameter display, maintenance services, etc.

## MAGNI

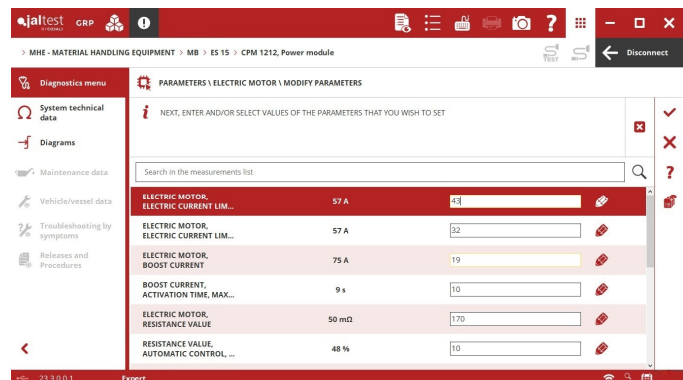
**Volvo EMS V3** engine control system, DPF parameter modification, engine speed rate limitation, etc.

In addition, new wiring diagram configurations available for **Deutz** and **Perkins** engines.

## MB

⊕ **CPM 1212** power module for pallet jacks or stackers of **EPT, ES** and **PRL Series** that include the parameter configuration such as: Maximum flow of the fork raising.

In addition, new wiring diagram configurations available.

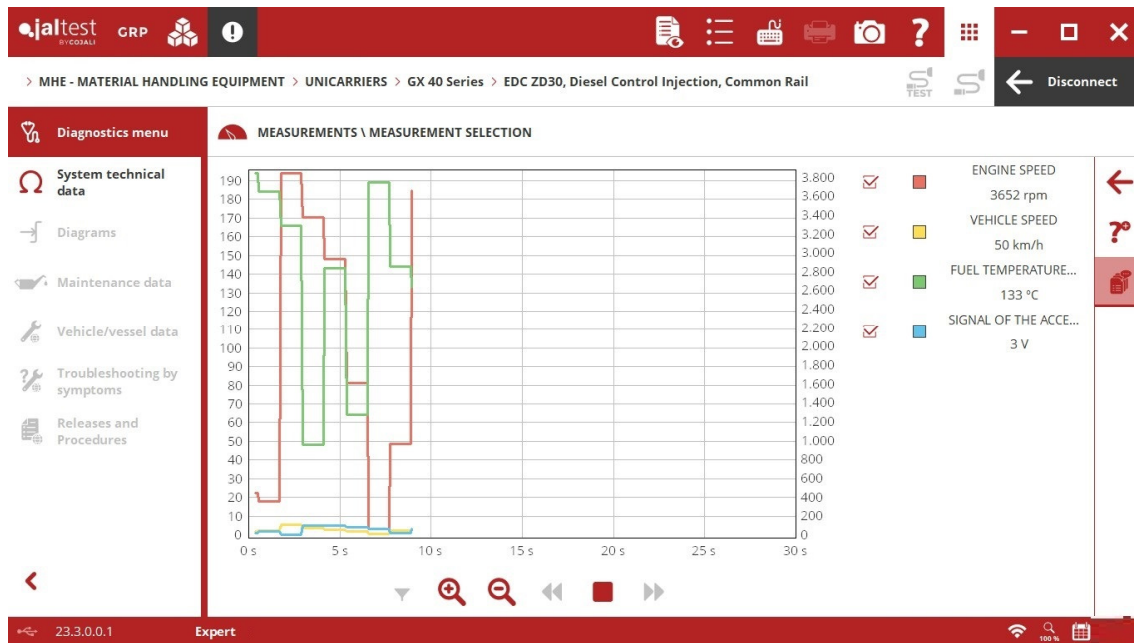


## TOYOTA

**ICH** central computer for pallet jacks and stackers, system checks, parameter configuration of the hydraulic system, user block management, etc.

## UNICARRIER

⊕ **EDC ZD30** engine control system for **Nissan** engines, parameter display, maintenance services, etc.



## WACKER NEUSON

**EMR4 EDC 17 CV52** engine control system for **Deutz** engines, system checks, maintenance services, etc.

## ZAPI

New wiring diagram configurations available for **SEM-1**, **AC-1**, **EPS** or **DUAL ACE-2** power modules.

