



INNOVATIONS 23.3

SOFTWARE INNOVATIONS

The new software version Jaltest 23.3 once again offers more improvements and innovations that consolidate this tool as a benchmark in multi-brand diagnostics for commercial vehicles, agricultural equipment, OHW equipment, material handling equipment and vessels.

With the innovations of the graphic interface, it is possible to:

- Show the battery voltage during the system scan processes.
- Configure the fault code display during the system scan processes.
- Hide the information panel in action steps with measurements.
- Restart the connection when losing the communication with systems in different sections of the application.
- Customise connection images.
- Configure measurement groups in the data recorder function.

In addition, with GRP it is possible to associate diagnostics reports to number plates and/or VIN chassis numbers that do not belong to any vehicle from the list.

BRANDS AND MODELS

Take into account that this document is only a summary of the most relevant information of this new version. For further information, please visit Jaltest Report.

Some of the new models and brands of this version are listed below.

CNHTC-SINOTRUK

Howo T7H / TX / T5G / G5X

Sitrak C7H / C6G / C5H

FORD

Ranger 3.0 D NGD [2005 – 2009]

Ranger 2.2 TDCi Duratorq [2012 - ...]

HINO

Liesse

Selega

HYUNDAI

Aero Bus, engine: D6AB, D6CA, D6CB, D6CC

Aero Town, engine: D6GA

County, engine: D4GA

Universe, engine: D6AB, D6CA, D6CD

IRIZAR

ie bus / i2e

ie tram

ISUZU

C Series/E Series/GIGA, engine: 6WG1 Euro 6

N Series/ELF, engine: 4JZ1-TC

Citiport CNG Euro 6

Kendo 12.3

IVECO/IRISBUS

Crossway CNG Euro 6-E [2022 - ...]

Streetway Euro 6-E [2022 - ...]

Urbanway Euro 6-E [2022 - ...]

Daily Latin America [2019-2021]

Minibus Daily CNG [2021 - ...]

JAC

X200

MAN

42C/43C Lion's 4 City (12/13 m)

18E Lion's 4 City (18 m)

MERCEDES-BENZ

Vito [447] 110 CDI engine: OM 622.851/654.920

NISSAN

Frontier 2.5 D-4D 4WD [D22] engine: YD25DDTi

Frontier ZD30 DDT 4WD

Navara NP300 2.5 Diesel Turbo [D22SS] engine: YD25DDTi

Navara NP300 2.5 dCi 4x4 [D22SS] engine: YD25

NV300 Primastar [X82] engine: M9R [2021 - ...]

OTOKAR

Agilo C Euro 6

RENAULT

Kangoo 1.5 Blue dCi [FF/KF] engine: K9K [2021 - ...]

Trafic 2.0 dCi [EG/FG/GJ] engine: M9R [2021 - ...]

SCANIA

R Series Euro 3, 4, 5 [2017 - ...]

R, G, P, S Series SUPER Euro 6 [2017 - ...]

K 450C B

SOLARIS

Electric Bus

Urbino 12 HYBRID Euro 6

TOYOTA

Hilux 3.0 Diesel Turbo 4x4

Hilux 2.8 D-4D

Land Cruiser 4.2 Diesel turbo 4x4

UD TRUCKS

Condor (Engine: 6NX1)

VOLKSWAGEN

Constellation 25.460 Euro 5

Meteor 29.530 Euro 6

Crafter 35 2.0 TDI, engine: DAWA [2017 - 2021]

XCMG

Hanvan G5 / G7 / G9

K Series

DIAGNOSTICS AND SYSTEMS

TRUCK

BMC

⊕ **EDC MD1 CE101** engine control system for the **Tugra** model.

DAF

⊕ **Service** maintenance system for **XF, XG** and **XD Euro 6 [2021 - ...]** models.

In this version, the **Allison 3000/4000 (5th Gen)** transmission has been added for **CF MX-11 E6** and **CF E6 (F7/BH Series) [2017 - ...]** models.

IVECO

⊕ **ECM MD1 CNG/LNG** gas engine control system for **S-Way** and **X Way Natural Power** models.

The injector coding and the reset after oil replacement have been added in **S-Way, T-Way** and **X-Way** models with Cursor engine and **EDC MD1** engine control system.

MAN

⊕ **Ecolife RMMV** transmission for the **TGA** model in military versions.

MERCEDES-BENZ

Update of the technical vehicle data for **Econic 5** models with **OM936** engine types including information concerning the vehicle maintenance programs.

RENAULT

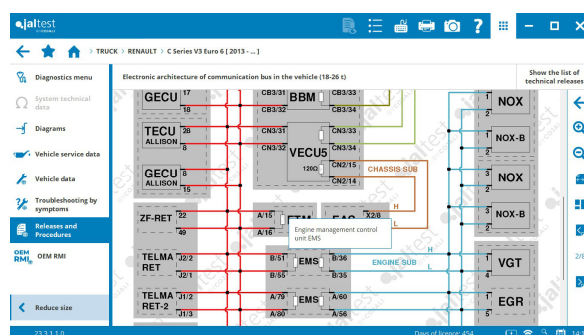
In vehicles with **V3 technology**:

Interactive technical release of the electronic vehicle architecture.

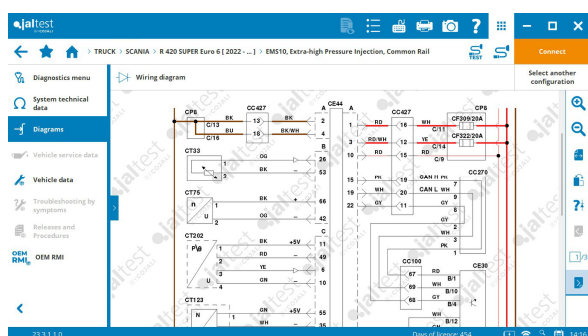
In vehicles with **V4 technology**:

CIOM cab module, key learning process.

Maintenance system through the **VMCU** electronic control unit of the vehicle, reset of the gearbox oil change.



SCANIA



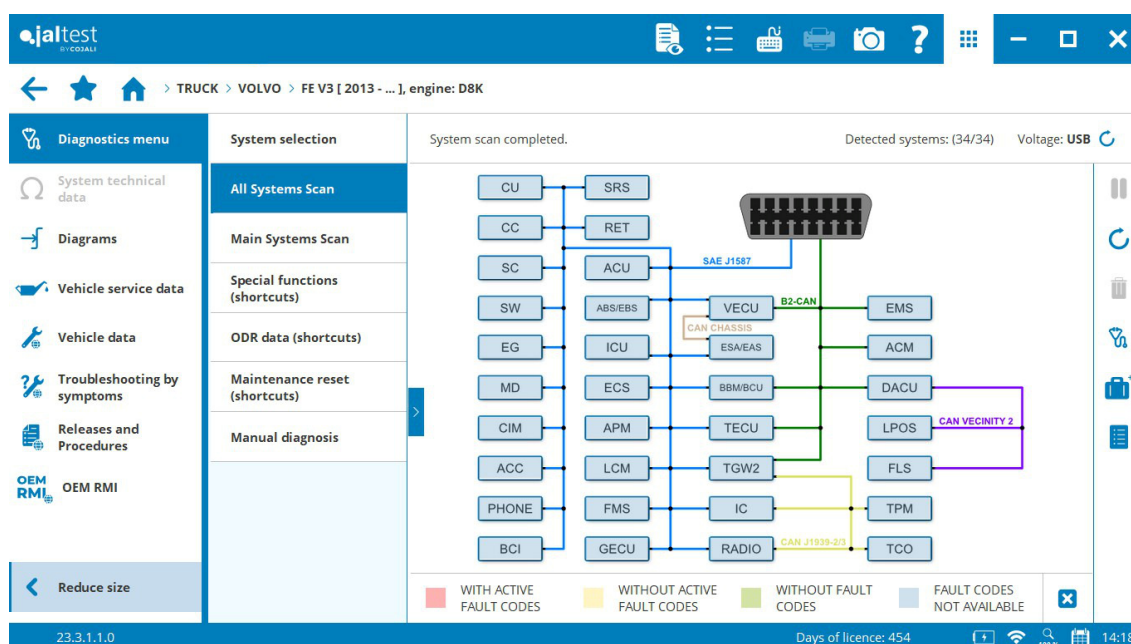
New wiring diagram configurations available for the **EMS10** engine control system.

⊕ **AMS2 Cummins Ecofit UL4** exhaust gas aftertreatment system installed in models of the **SUPER** range.

VOLVO

In vehicles with **V3 technology**:

Diagram display of the system configuration during the system scan.



EMS engine control system, configuration of the engine speed limitation with active fault codes.

In vehicles with **V4 technology**:

EMS engine control system, configuration of the vehicle speed limit reduction in economy mode.

CIOM cab module, remote key and key learning processes.

BUS

IRISBUS

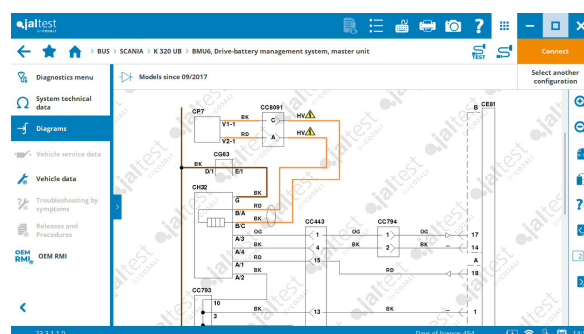
- ⊕ **ETS** rear steering axle control system in **CROSSWAY** and **EVADYS Euro 6** bus models.

MERCEDES-BENZ

- ⊕ New systems for **eCITARO** model, **CPC** (Common PowerTrain Controller), **DCL** (DC/DC Converter) and **API** (Ancillaries Power Inverter).

SCANIA

New wiring diagram configurations of the **BMU** drive battery in **K320 UB** and **K320 EB** hybrid models available for vehicles manufactured from 09/2017.

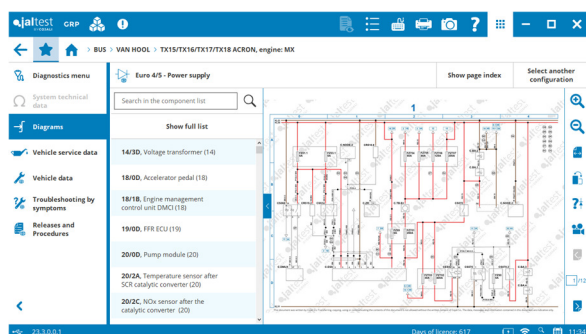


TEMSA

- ⊕ **EDC MD1 CE101** engine control system for **MD7** and **MD9 Euro 6** models.

VDL

Wiring diagrams by model in **Citea Euro 6 (Cursor 9) SLF, SLE-XLE** and **Citea Euro 4/5 LLE, CLF PR**. In addition, new wiring diagram configurations available for several systems such as **EAS3, PCI** or **EBS**.



VAN HOOL

Wiring diagrams by model in **TX-TDX, TX-TDX Euro 4/5**.

TRAILER

WABCO

The new reference of the **Wabco EBS E6.5** module has been added.

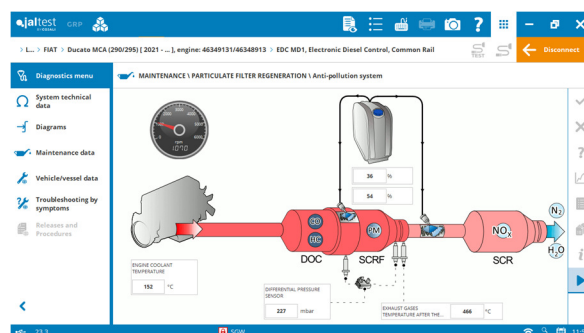
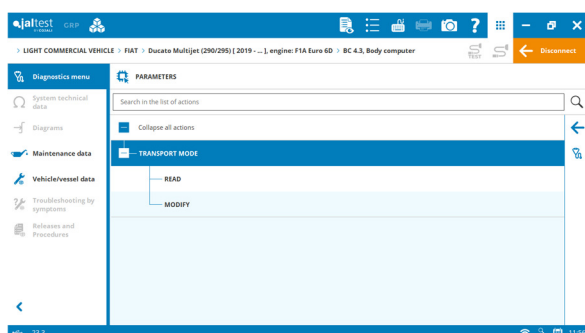
LIGHT COMMERCIAL VEHICLE

FIAT

Wiring diagrams by model in **Fiat Ducato MCA [2021 - ...]**.

⊕ **RRM** and **ETM** radio infotainment systems in the **Fiat Ducato [2014 - ...]** model in which new parameters of the transport mode have also been added.

In addition, an interactive System Display has been added for the Diesel Particulate Filter regeneration and the fuel system in the **Fiat Ducato MCA** model.

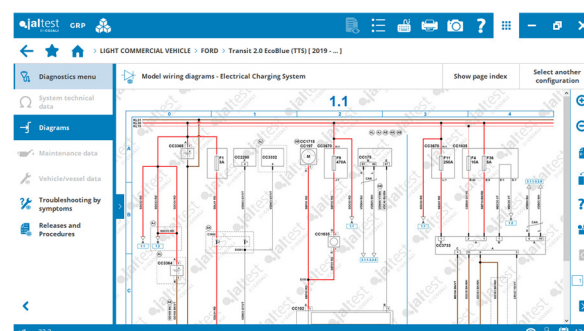


FORD

Wiring diagram by model in **Ford Transit EcoBlue [2019 - ...]**.

⊕ **TCN 6R80** transmission in the **Ford Ranger [2012 - 2019]** model.

Parameters of the transport mode in the **Ford Transit/Custom [2014 - ...]** model.



IVECO

⊕ **Service 5.0** maintenance control system for **Daily MY2019** and **MY2021**.

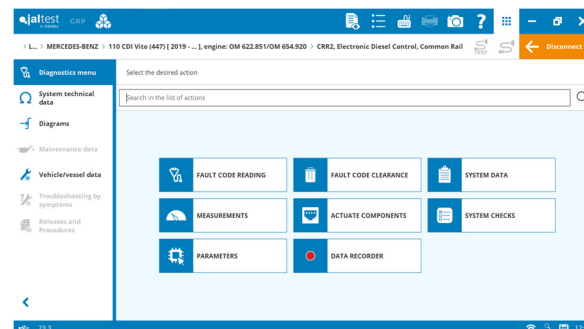
MERCEDES-BENZ

New wiring diagram configurations available for several systems such as **ENR**, **STH**, **CRR2**, **BSN/IBS**, **OCP** or **ISM** in **Sprinter 906/907** and **Vito 447** models.

⊕ **CRR2** engine control system in the **Vito 110/114 [2019 - ...]** model.

⊕ **ENR** suspension control system in the **Sprinter 906** model.

Parameters of the transport mode in **Sprinter 906/907** and **Vito 447** models.



MANUFACTURER

ALLISON

Allison 3000/4000 (6th Gen) transmission, adaptive shift reset, oil filter reset and clutch reset.

CUMMINS

Euro 6 X15 CM2350, X12 CM2350, B4.5/6.7 CM2350 and **L9 CM2350** engine control systems, parameters and checks concerning the exhaust gas aftertreatment system and the injector coding.

Euro 6E X15 CM2450, X12 CM2450, L9 CM2450 and **B6.7 CM2450** engine control systems, high idle configuration for the quick heating and the injector coding.

FPT INDUSTRIAL

EDC 17 CV41 + Denox 2.2 engine control system, system checks and maintenance services such as the AdBlue/DEF dosing, the particulate filter replacement and the DOC catalytic converter, etc.

EDC MD1 CE101 engine control system now available for MANUFACTURER.

WABCO

⊕ **OnLane 2 LDW** lane departure warning assistant.

In addition, new wiring diagram configurations and technical data available of **OnLane 2 LDW** and **OnLane LDW** systems.

