



INNOVATIONS 23.3

SOFTWARE INNOVATIONS

The new software version Jaltest 23.3 once again offers more improvements and innovations that consolidate this tool as a benchmark in multi-brand diagnostics for commercial vehicles, agricultural equipment, OHW equipment, material handling equipment and vessels.

With the innovations of the graphic interface, it is possible to:

- Show the battery voltage during the system scan processes.
- Configure the fault code display during the system scan processes.
- Hide the information panel in action steps with measurements.
- Restart the connection when losing the communication with systems in different sections of the application.
- Customise connection images.
- Configure measurement groups in the data recorder function.

In addition, with GRP it is possible to associate diagnostics reports to number plates and/or VIN chassis numbers that do not belong to any vehicle from the list.

BRANDS AND MODELS

Take into account that this document is only a summary of the most relevant information of this new version. For further information, please visit Jaltest Report.

Some of the new models and brands in Jaltest are listed below.

TRACTOR

This version includes a new tractor brand: **HINOMOTO**. Some of the new models are listed below.

CASE iH

Optum Series (TMR), engine: Final Tier 4/Stage IV

Puma Series - CVT (TMR), engine: Final Tier 4/Stage IV

CLASS

Arion 4X0 (A72), engine: Tier 5/Stage V

Nexos (A65/A66/A67/A69/A70/A71)

JOHN DEERE

2R Series

LANDINI

Rex 4 Series (F/S/V/GT/GE/GB), engine: Tier 5/Stage V

Trekker Series, engine: Tier 5/Stage V

McCORMICK

X4 Series (F/N/V/XL), engine: Tier 5/Stage V

TYM

K110E

T455

T130

VALTRA

A 105

A 95

HARVEST EQUIPMENT

JOHN DEERE

S400 Series

CP700 Series

CS700 Series

ROSTSELMASH

RSM 1403

SELF-PROPELLED AND TRAILING IMPLEMENT

This version includes the **AEBI** brand of utility vehicles.

VREDO

VT7028-3

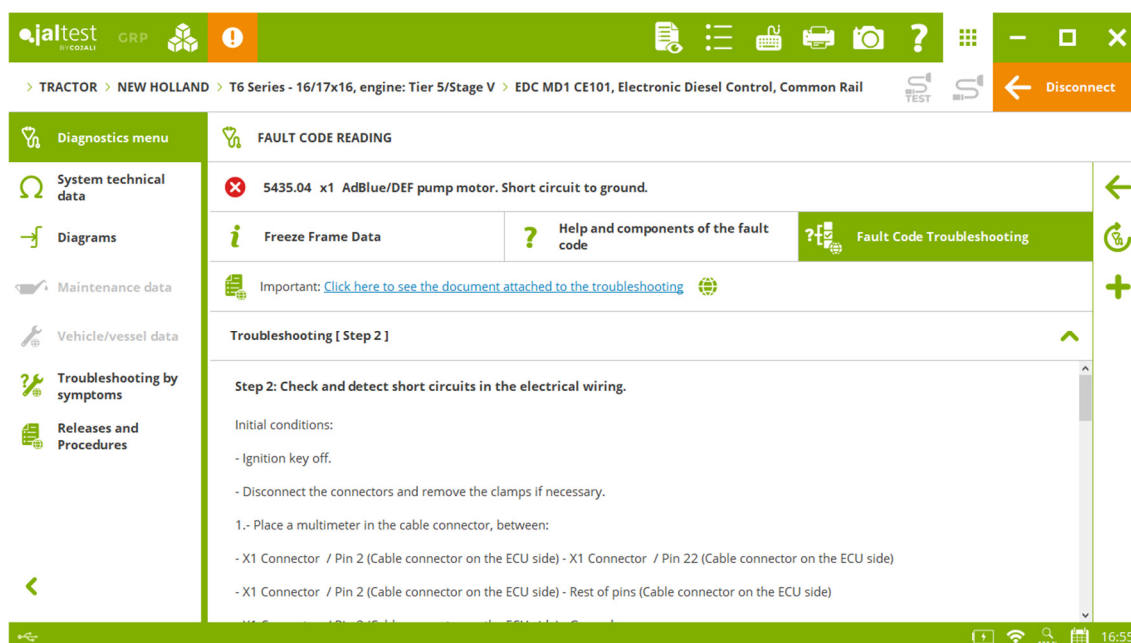
DIAGNOSTICS AND SYSTEMS

Take into account that this document is only a summary of the most relevant information of this new version. For further information, please visit Jaltest Report.

Overall, there are new technical information and troubleshooting guides (now **SMART guides**) by symptoms and of the most common fault codes in the workshop thanks to the communication channels with clients such as the technical support offered by the project, training, Jaltest Feedback and “Product improvement” option.

As innovation, it is important to highlight the AdBlue/DEF module cleaning in the **Cummins B6.7** engine control system, present in several models of tractor and harvest equipment brands such as KUBOTA and CLAAS.

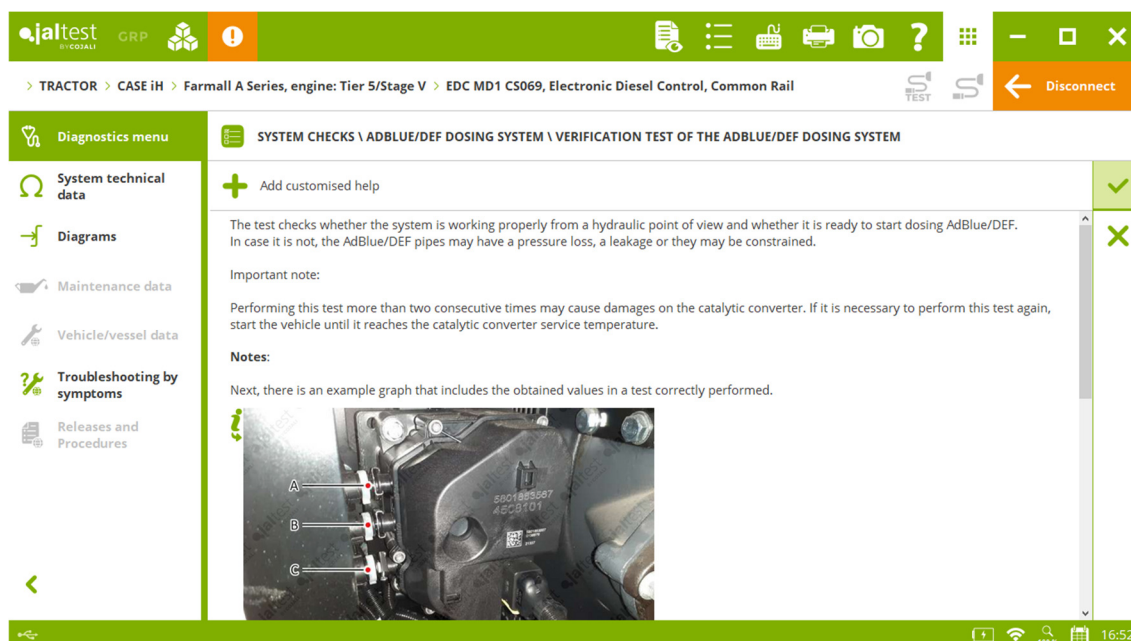
New SMART guides by fault code by fault code in the **EDC MD1 CE101** engine control system of the **FPT** brand, present in several models of tractor, harvest equipment and self-propelled and trailing implement brands such as **ARBOS, LANDINI** or **MCCORMICK**, among others.



TRACTOR

Overall, new manual diagnostics in several models of brands such as **CASE iH**, **JOHN DEERE**, **MASSEY FERGUSON** or **NEW HOLLAND**, among others.

FPT EDC MD1 CS069 engine control system, checks and maintenance services of the engine and the AdBlue/DEF exhaust gas aftertreatment system.



CASE iH

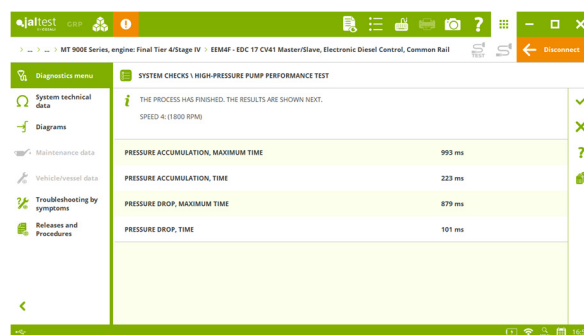
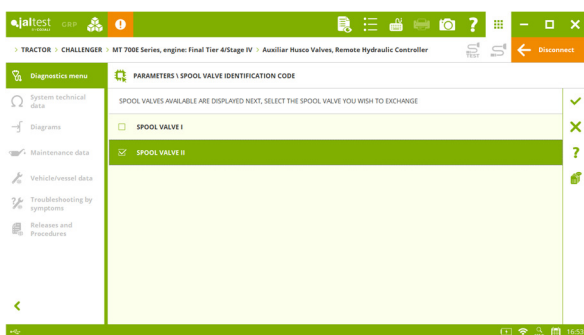
⊕ **TCM** transmission and **EDC** rear lift system in the **Farmall C Series** model, **engine: Tier 5/Stage V**.

AST steering system, technical release to calibrate the steering in **Maxxum Series – CVT** and **Puma Series - 18/19x6 Full Power Shift** models, **engine: Final Tier 4/Stage IV**, among others.

CHALLENGER

Husco Auxiliar Valves hydraulic system, exchange of the spool valve identification codes for **MT 700E Series** models, **engine: Final Tier 4/Stage IV** and **MT 800E Series, engine: Final Tier 4/Stage IV**, among others.

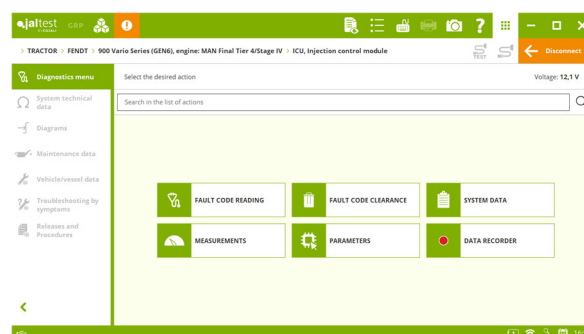
SISU EEM4F – EDC 17 CV41 Master/Slave engine control system, checks and maintenance reset.



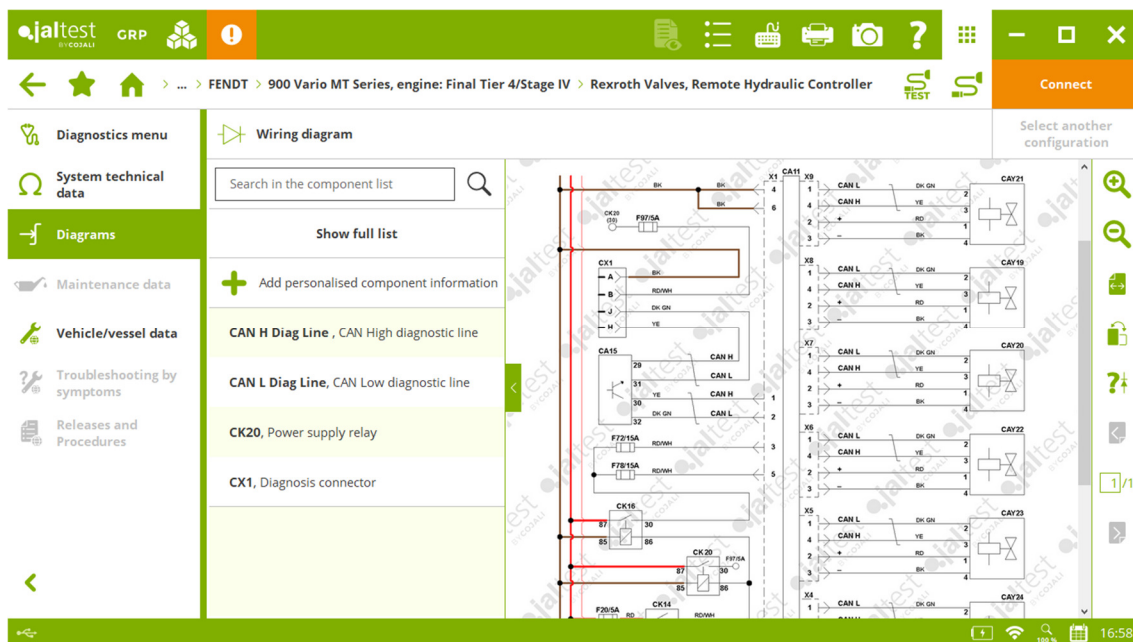
FENDT

⊕ **ICU** injection control system in the **900 Vario Series (GEN6)** model, **engine: MAN Final Tier 4/Stage IV**.

MAN EDC 17 CV42 engine control system, lambda/O₂ sensor reset for **1000 Vario Series** and **1100 Vario Series** models, **engine: Final Tier 4/Stage IV**, among others.



New wiring diagrams, technical data and location images in systems of **900 Vario MT Series** models, **engine: Final Tier 4/Stage IV** and **1100 Vario MT Series**, **engine: Final Tier 4/Stage IV**, it is important to highlight the **Instrument Cluster** and **Rexroth valves** systems.



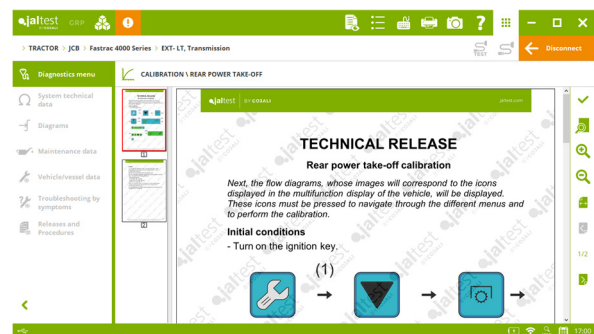
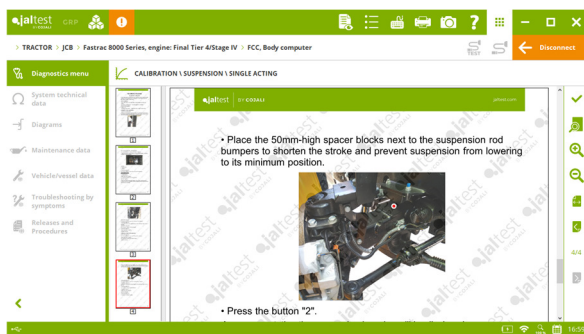
JCB

New systems in **Fastrac 8000** and **Fastrac 4000 Series** models:

- ⊕ **4WD** differential lock control system.
- ⊕ **ABS** brake system.

FCC central computer, suspension calibration for the **Fastrac 8000 Series** model, **engine: Final Tier 4/Stage IV**.

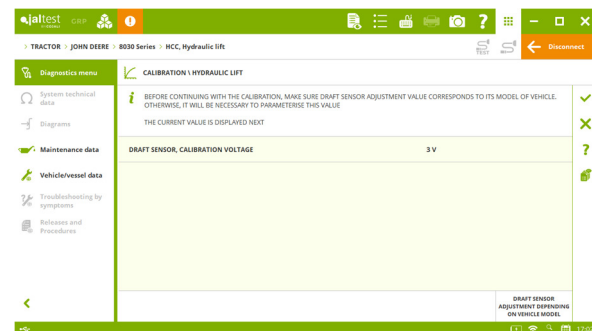
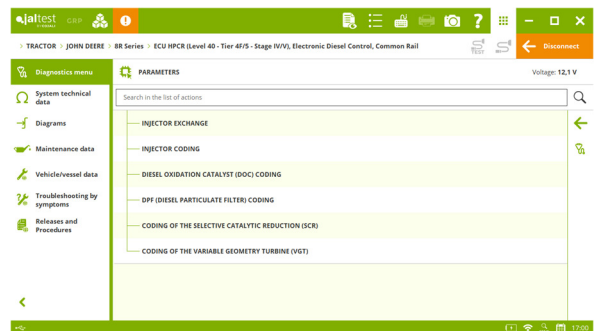
EXT-LT transmission, calibration of the rear and front power take-offs for **Fastrac 4000 Series** models.



JOHN DEERE

- ⊕ **HVI** hydraulic system for **5M** and **5R Series** models.
- ⊕ **AIC (MY22)** electronic module for **8R Series** models after the year 2022.

ECU HPCR (Level 40 - Tier 4F/5 - Stage IV/V) engine control system, functionalities such as the injector coding, the diesel particulate filter cleaning or the fault code clearance of the exhaust gas aftertreatment system for **7R, 8R** and **9R Series** models.



SCO hydraulic control system, configuration of the XI, XII and XIII front spool valves for the **6R Series** model, **engine: Interim Tier 4/Stage IIIB**.

HCC hydraulic system, lift calibration for the **8030 Series** model.

Diagrams by model in **6020, 6030** and **7030 Series**.

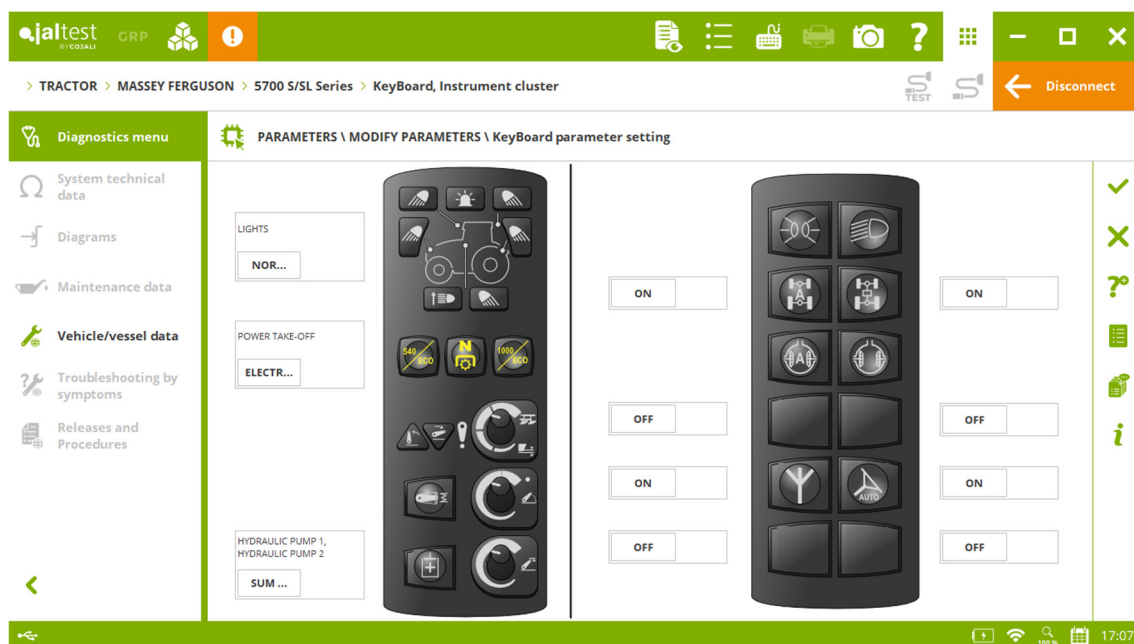
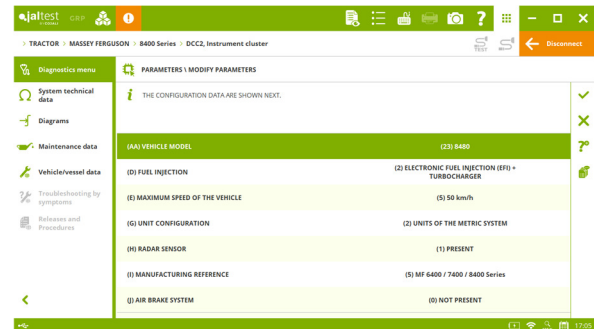
MASSEY FERGUSON

- ⊕ **SRC14-34** central computer for **6700 S**, **7700 S** and **8700 S Series** models.
- ⊕ Steering control system for **6700 S** and **7700 S Series** models.
- ⊕ **DCC** instrument cluster for the **8700 S Series** model.

PVED steering control system, steering angle check and calibrations of the centred steering position and the maximum wheel turning angle.

Parameter configuration in systems of this brand such as the **DCC2** instrument cluster or the **Autotronic 5** suspension control system.

KeyBoard instrument cluster, System Display during the parameter configuration in **5600**, **5700 S/SL**, **6600**, **6700 S**, **7600**, **7700 S**, **7700** and **8700 Series** models.



NEW HOLLAND

REHR remote hydraulic controller, configuration of the boom control lever and the switch in the mudguard for the **T6 Series - Auto Command (TMR)** model, **engine: Final Tier 4/Stage IV**.

Calibration of the rear power take-off in **RPTO** system for **T6 Series - 16/17x16** models, **engine: Final Tier 4/Stage IV** and **T7 Series - Auto Command**, **engine: Tier 5/Stage V**, among others.

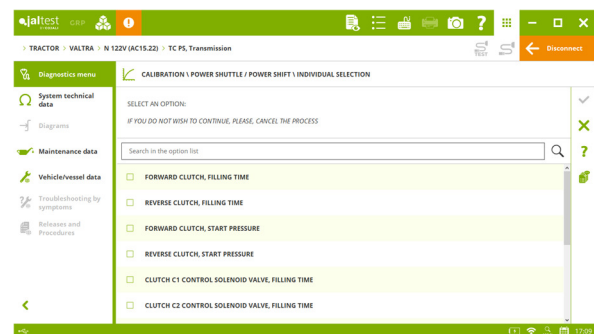
STEYR

FPTO front power take-off control system in the **Terrus Series** model, **engine: Final Tier 4/Stage IV**.

Calibration of the spool valve control levers in **REHR** system for **Profi 4115-6145 - 16/17x16 (TMR)** models, **engine: Final Tier 4/Stage IV** and **Terrus Series, engine: Tier 5/Stage V**, among others.

VALTRA

TC PS transmission, individual calibrations of the transmission and clutches for models such as **N 122V (AC15.22)**, **N 134V (AC35.5)**, **T 154A (AC37.5)** or **T 254V (AC35.6)**, among others.



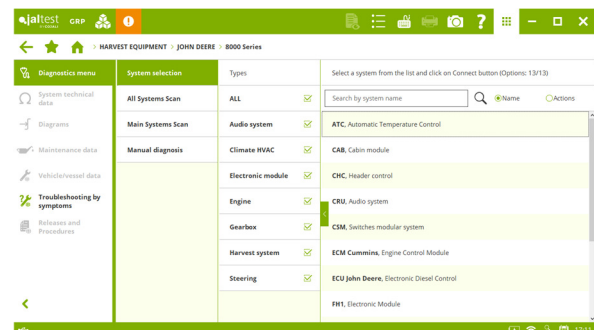
HARVEST EQUIPMENT

Extended coverage of configurable parameters in **Volvo EMS V3** and **EMS V4** engine control systems, present in models of harvest equipment brands such as **AGRIFAC**, **AVR**, **HOLMER**, **ROPA** or **WEISS McNAIR**.

JOHN DEERE

New systems for the **8000 Series** forage harvester model, such as:

- ⊕ **CAB** electronic module of the cabin.
- ⊕ **ATC** climate control.
- ⊕ **CRU** audio.
- ⊕ **CHC** harvest system.
- ⊕ **CSM** battery control module and/or switch module.
- ⊕ **HMI** harvest system.
- ⊕ **MHC** electronic module.
- ⊕ **PTP** transmission.
- ⊕ **XSC** steering control system.

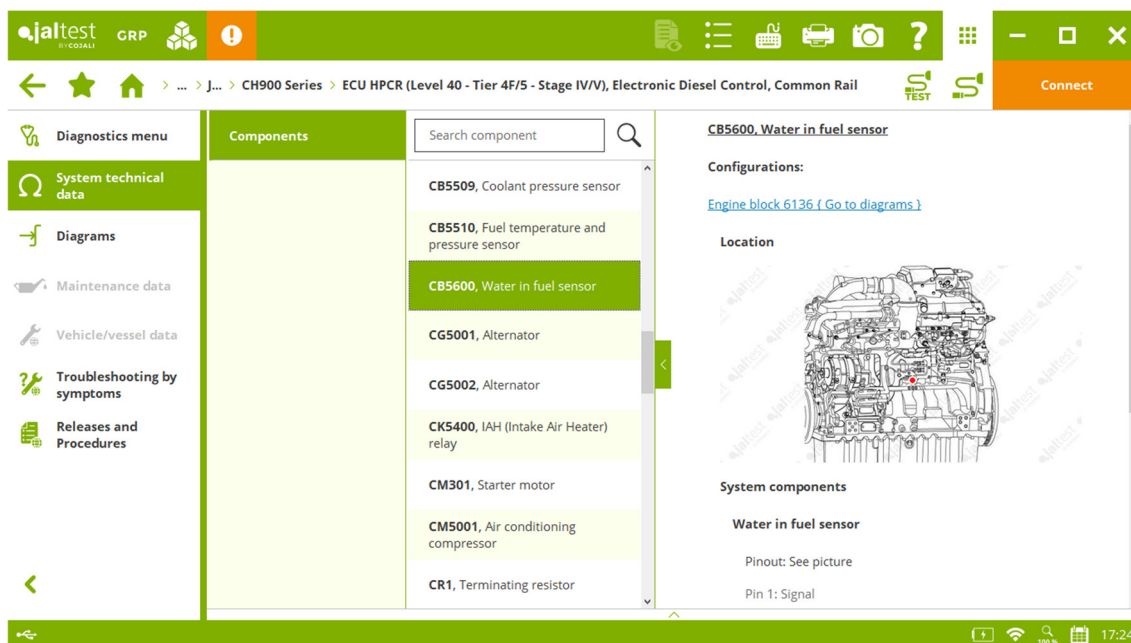


New systems for **S500**, **S600** and **S700** Series combine harvester models:

- ⊕ **AYM** harvest system.
- ⊕ **ATC** climate control.

ECU EUI (Level 32 - Final Tier 4 / Stage IV) engine control system, verification test of the SCR exhaust gas aftertreatment system repair for **CP600**, **S700** and **X9 Series** models, among others.

New wiring diagrams, technical data and location images in the **ECU HPCR (Level 40 - Tier 4F/5 - Stage IV/V)** engine control system for **CH900** and **X9 Series** models.



NEW HOLLAND

FPT EDC 17 CV41 + Denox 2.2 (Vector) engine control system, replacement of the pressure regulator of the high-pressure fuel pump for the **FR Series** model.

SELF-PROPELLED AND TRAILING IMPLEMENT

- ⊕ **Deutz EMR4 - EDC 17 CV52 Master/Slave** engine control system, present in the **VT7028-3** model of **VREDO** brand.

