

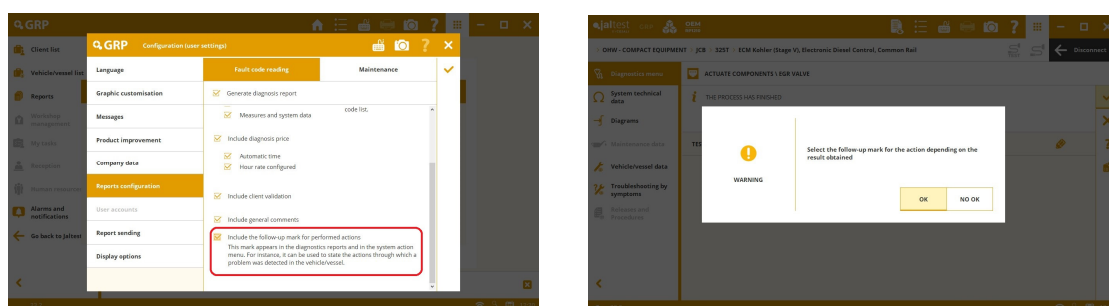


## INNOVATIONS 23.2

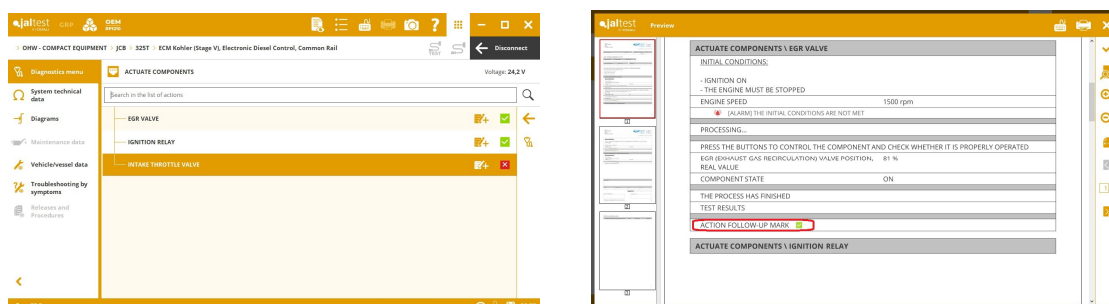
# SOFTWARE INNOVATIONS

The new software version Jaltest 23.2 once again offers more improvements and innovations that consolidate this tool as a benchmark in multi-brand diagnostics for commercial vehicles, agricultural equipment, OHW equipment, material handling equipment and vessels.

This version includes the ability to configure a **follow-up check for performed diagnostics actions**.



This enables the user to include their opinion concerning the vehicle behaviour during the diagnostics session in the report.



Finally, it is important to note the new access to the **GRP user manual** from Jaltest.

# BRANDS AND MODELS

---

Take into account that this document is only a summary of the most relevant information of this new version. For further information, please visit Jaltest Report.

## OHW - HEAVY EQUIPMENT

In this version, new brands such as **EPIROC** and **TREPEL** have been added.

### DOOSAN

New models for **MT Series** articulated haulers.

### KOMATSU

New 10 models have been added.

## OHW - COMPACT EQUIPMENT

New brands such as **NC ENGINEERING** and **REFORM** have been added, and the number of models in **JCB** and **KOMATSU** brands has been increased.

## STATIONARY ENGINE

Increased number of models in **MERCEDES-BENZ** brand.

## MULTI-PURPOSE VEHICLE

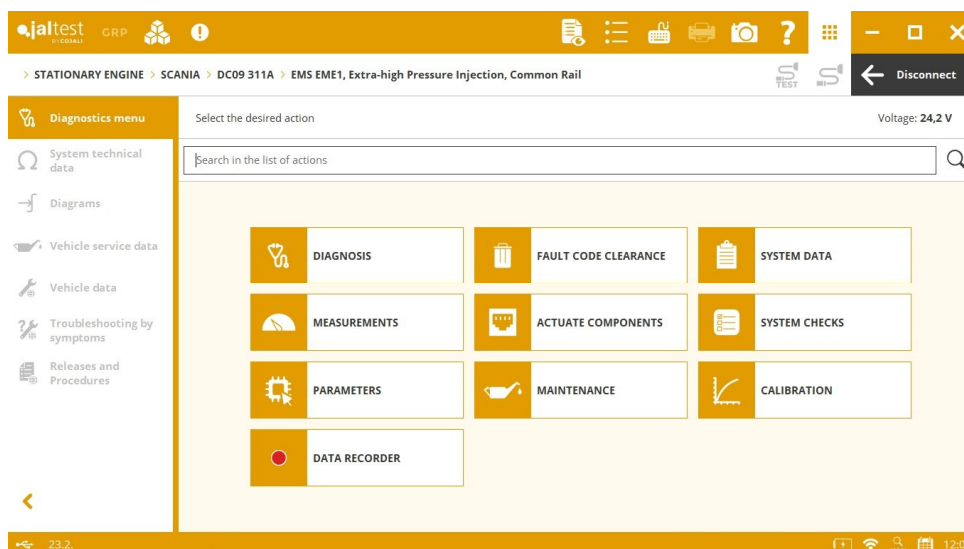
In this version the following new brands have been added: **BOBCAT** and **REFORM**.

# DIAGNOSTICS AND SYSTEMS

---

Take into account that this document is only a summary of the most relevant information of this new version. For further information, please visit Jaltest Report.

It is important to note the development of the **EMS EME1** control system for **STAGE V Scania** engines, which has advanced functions for diagnostics tasks. This system is available in STATIONARY ENGINE or other brands such as **DOOSAN**, **POWERSCREEN** or **TEREX FINLAY**.



## OHW - HEAVY EQUIPMENT

### BELL

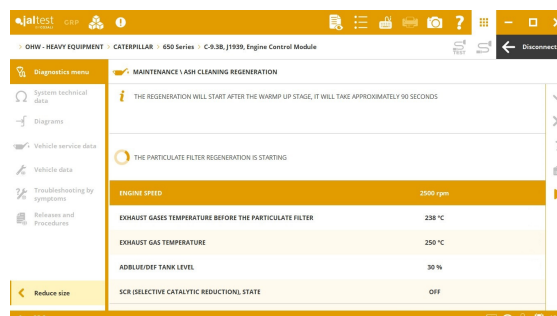
New wiring diagram configurations in **B Series** and **D Series** models.

### CATERPILLAR

⊕ **C-2.8 / C-3.6** (on SAE J1939) engine control system.

⊕ **C-9.3B** (on SAE J1939) engine control system.

New wiring diagram configurations in the **SCR / DEF** anti-pollution system for models with **C-7.1**, **C-9.3**, **C-13**, **C15** and **C18** engines.



### DOOSAN

**DOOSAN EDC DL06/DL08 EDC17 CV41** engine control system, new measurements in the exhaust gas aftertreatment system with dynamic System Display.

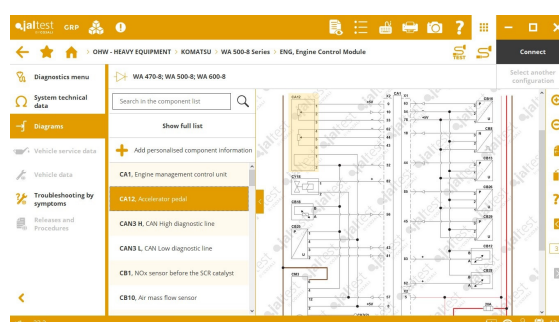
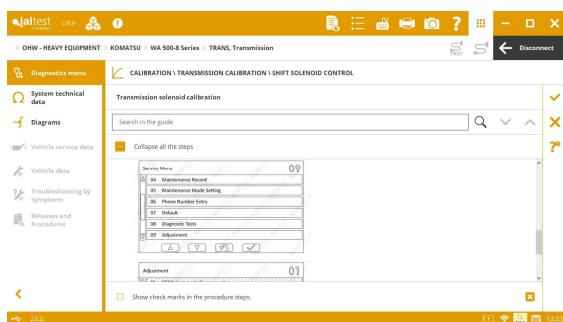
### JCB

**DECU** instrument cluster, maintenance reset.

## KOMATSU

- ⊕ **BBC** hydraulic system for monitor R in wheel loaders.
- ⊕ **TRANS** transmission system for monitor R in wheel loaders.
- ⊕ **ENG** engine control system for monitor D in crawl excavators.
- ⊕ **PUMP** hydraulic system for monitor D in crawl excavators.
- ⊕ **MON** instrument cluster for monitor D in crawl excavators.
- ⊕ **ENG** engine control system for monitor F in crawl excavators.
- ⊕ **ENG** engine control system for monitor B in crawl excavators.
- ⊕ **PUMP** hydraulic system for monitor B in crawl excavators.
- ⊕ **MON** instrument cluster for monitor B in crawl excavators.

New wiring diagram configurations in **WA Series** models.



## LIEBHERR

**Master 4, Ethernet** central computer with new measurements for excavators.

## POWERSCREEN

- ⊕ **SCANIA EMS EMEI** (on SAE J1939) engine control system.

## TADANO FAUN

**MERCEDES-BENZ ACM3** exhaust gas aftertreatment system, check of dosed quantity of AdBlue/DEF and maintenance services such as the diesel particulate filter regeneration and the exhaust gas aftertreatment system regeneration.

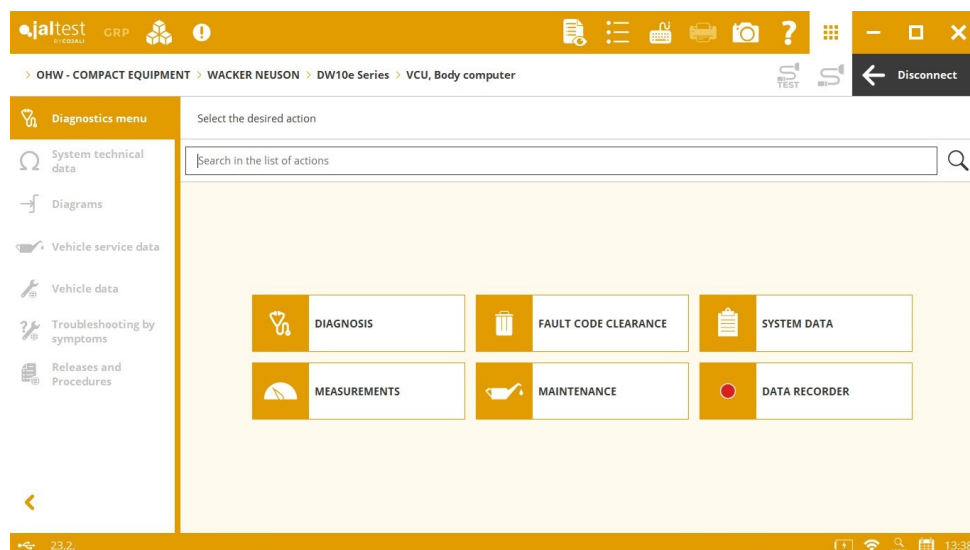
## VOLVO CE

**ACM** exhaust gas aftertreatment system, diesel particulate filter regeneration with dynamic System Display.

## OHW - COMPACT EQUIPMENT

Take into account that this document is only a summary of the most relevant information of this new version. For further information, please visit Jaltest Report and coverage on Jaltest website.

The **VCU** central computer from **WACKER NEUSON** has been developed for electric haulers.



## BOBCAT

⊕ **DOOSAN EDC DM02 / DM03** (on SAE J1939) engine control system.

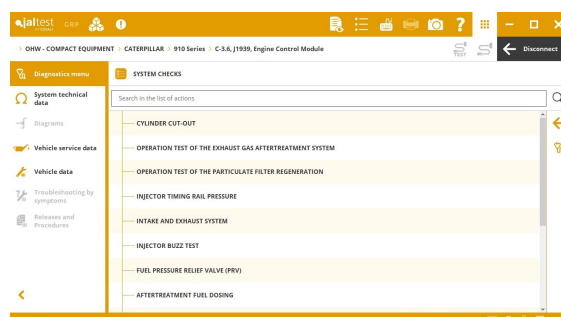
## CASE CE

New wiring diagram configurations in **SR 175 Series** and **SV 185 Series** models.

## CATERPILLAR

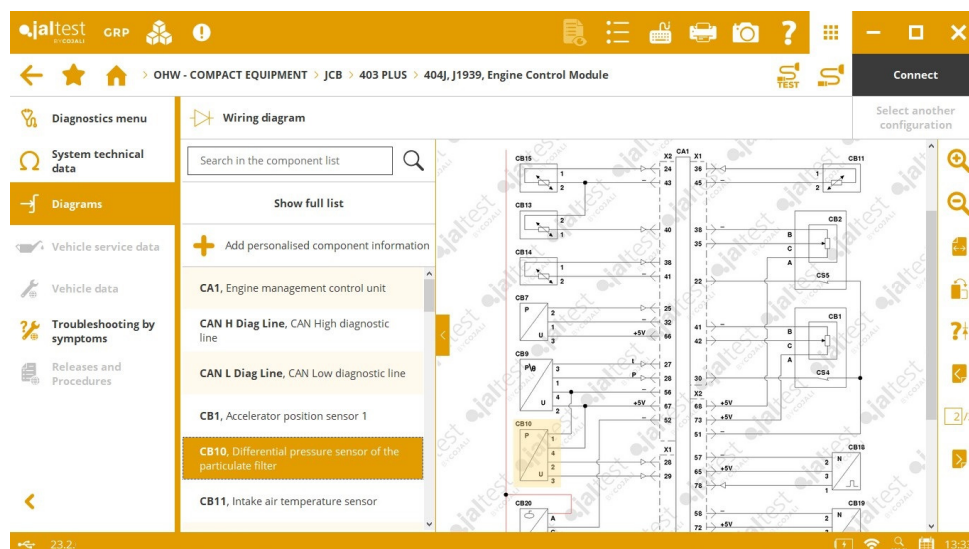
⊕ **C-2.8 / C-3.6** (on SAE J1939) engine control system.

**C2.2** (on SAE J1939) engine control system, actuation of the intake throttle valve, the cold start control relay and check of the injection rail pressure.



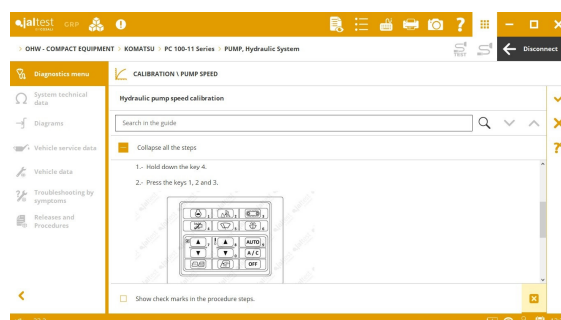
## JCB

New wiring diagram configurations in **1T-2; 35Z-1; 36C-1; 3T-2; 403 PLUS; 50Z-2; 56Z-2** and **60C-2** models.



## KOMATSU

- ⊕ **ENG** engine control system for monitor D in crawl excavators.
- ⊕ **PUMP** hydraulic system for monitor D in crawl excavators.
- ⊕ **MON** instrument cluster for monitor D in crawl excavators.
- ⊕ **ENG** engine control system for monitor F in crawl excavators.



## VOLVO CE

Technical release for the maintenance reset in the **IC** instrument cluster for **ECR Series (XY D) Compact** model.

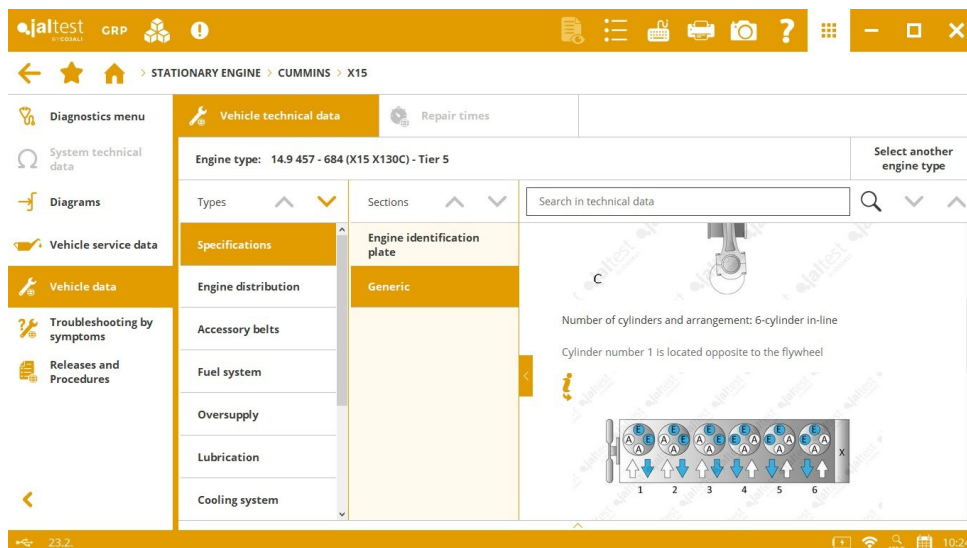
## WACKER NEUSON

- ⊕ **VCU** vehicle control system for electric haulers.
- ⊕ **VCU** vehicle control system for electric wheel loaders.

New wiring diagram configurations in **DW 40; ET 40; ET 50; ET 60; EW 60; EZ 50** and **EZ 80** series.

## STATIONARY ENGINE

Overall, technical data in new **CUMMINS** engine types has been added.



## CATERPILLAR

- ⊕ **C-2.8 / C-3.6** (on SAE J1939) engine control system.
- ⊕ **C-9.3B** (on SAE J1939) engine control system.

**C2.2** (on SAE J1939) engine control system, actuation of the intake throttle valve, the cold start control relay and check of the injection rail pressure.

## CUMMINS

Technical releases and procedures in **X15** engines such as “Check the fuel pump” and “Check for leaks in the turbocharger”. Technical releases in **B4.5 / B6.7** engines such as “Check for leaks in the oil cooler”, among others. In addition, new technical releases and procedures have been added in **L9** engines.

## DEUTZ

**EMR4 EDC17 CV56** (on SAE J1939) engine control system, maintenance service for the AdBlue/DEF module cleaning.

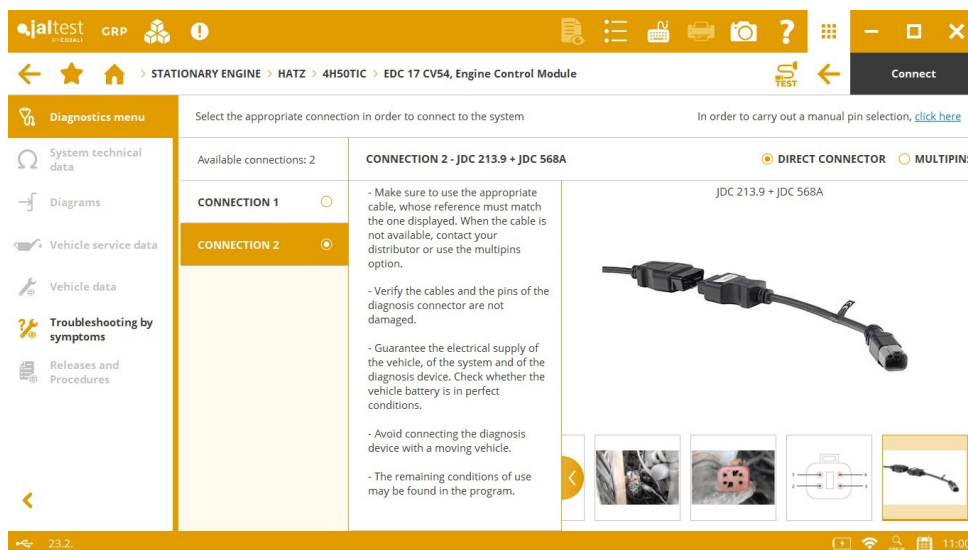
## DOOSAN

- ⊕ **EDC DM02 / DM03** (on SAE J1939) engine control system.



## HATZ

⊕ **JDC 568A** diagnostics cable.



## MERCEDES BENZ

**ACM3** (on SAE J1939) anti-pollution system, check of the dosed quantity of AdBlue/DEF and maintenance services such as the diesel particulate filter regeneration and the exhaust gas aftertreatment system regeneration.

New wiring diagram configurations in **OM 470**, **OM 473**, **OM 933/934** and **OM935/936** models, among others.

## PERKINS

Extended diagnostics coverage for the **904 J** (on SAE J1939) engine control system.

New wiring diagram configurations in **403J** and **404J** models.

## VM MOTORI

**TENNECO SCR/DEF** (on SAE J1939) anti-pollution system, check of the pump and the AdBlue/DEF pressure, dosing test, etc.

## VOLVO PENTA

**ACM** exhaust gas aftertreatment system, diesel particulate filter regeneration with dynamic System Display.

## MULTI-PURPOSE VEHICLE

Overall, extended diagnostics coverage for engine control systems. It is important to note new functionalities in the **VOLKSWAGEN EDC VW (CPYA)** system in **AUSA**, **HAKO** and **SCHMIDT** brands, in the **TENNECO SCR/DEF** anti-pollution system in **CMAR** and **MACRO CLEAN** brands and in the **VOLVO ACM V3** system in **MACRO CLEAN** brand.

