

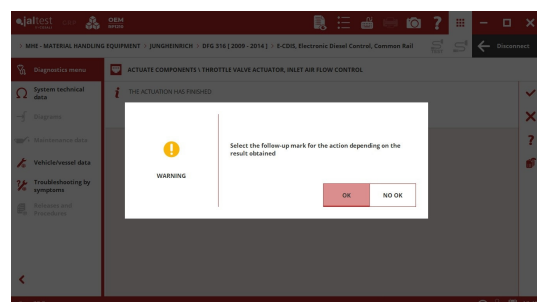
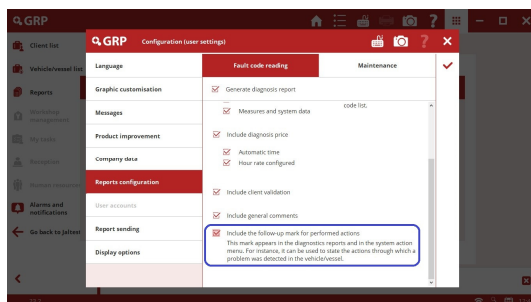


INNOVATIONS 23.2

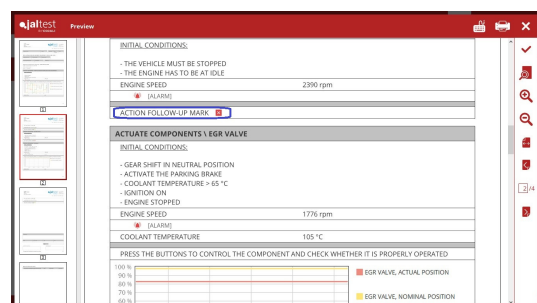
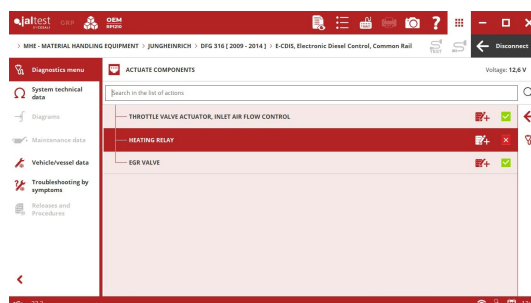
SOFTWARE INNOVATIONS

The new software version Jaltest 23.2 once again offers more improvements and innovations that consolidate this tool as a benchmark in multi-brand diagnostics for commercial vehicles, agricultural equipment, OHW equipment, material handling equipment and vessels.

This version includes the ability to configure a **follow-up check for performed diagnostics actions**.

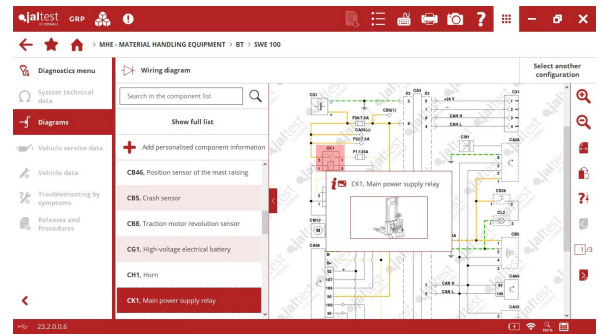


This enables the user to include their opinion concerning the vehicle behaviour during the diagnostics session in the report.

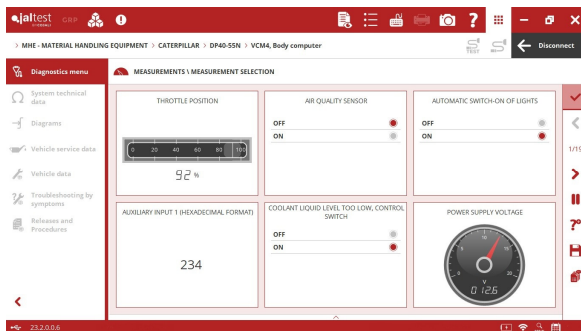


Finally, it is important to note the new access to the **GRP user manual** from Jaltest.

New wiring diagram configurations, component location images and technical data.



CATERPILLAR

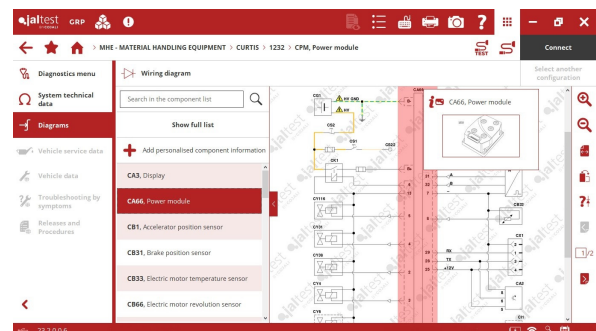
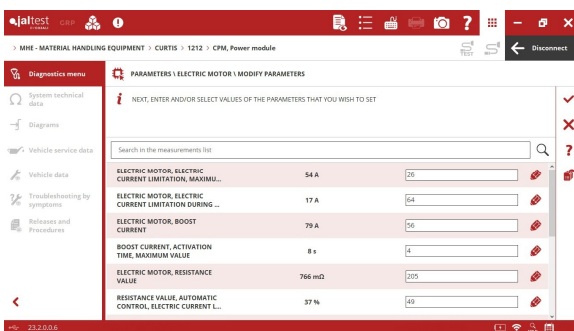


⊕ **VCM4** central computer for **DP** and **GP Series** internal combustion forklifts.

CURTIS

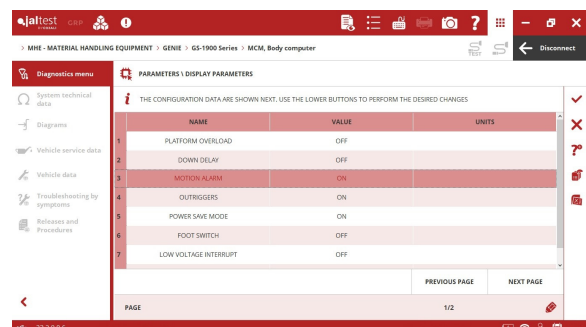
⊕ **CPM** system for **1212C** power modules.

New wiring diagram configurations and technical data of **1232**, **1234**, **1236** and **1238** models.



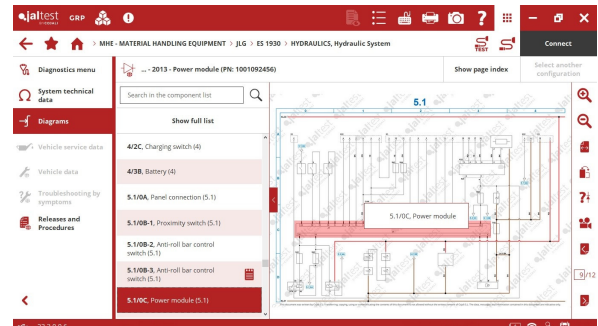
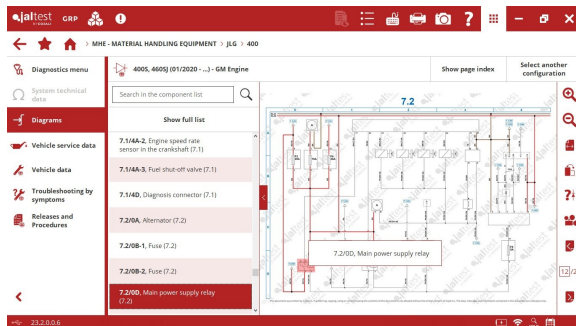
GENIE

MCM central computer, display and modification of parameters through dynamic tables.



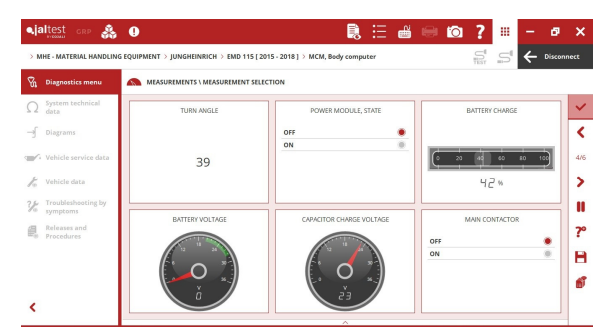
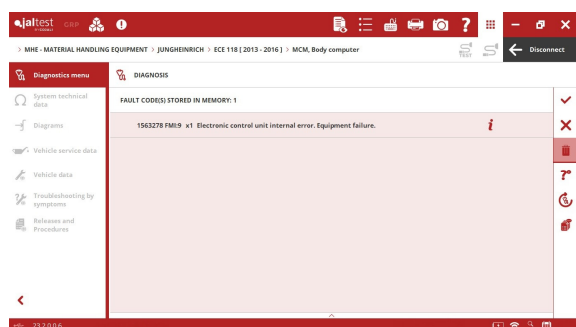
JLG

New wiring diagram configurations and technical data in families of **400, 600, 1000, ES**, etc. models.



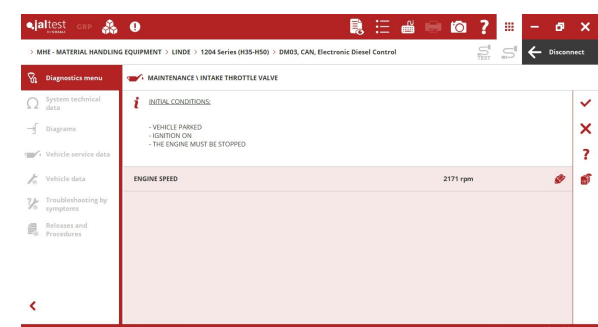
JUNGHEINRICH

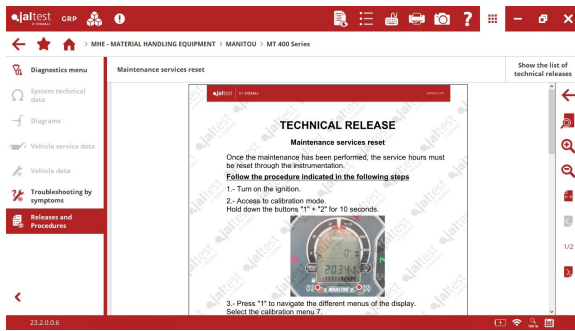
+ **MCM** central computer for pallet jacks and stackers in **ERE, ECE, EJD, EMD, EJE, EJR** and **EJC** families.



LINDE

+ **DM03** engine control system for **394 Series (H40-H50)** and **1204 Series (H35-H50)** models.





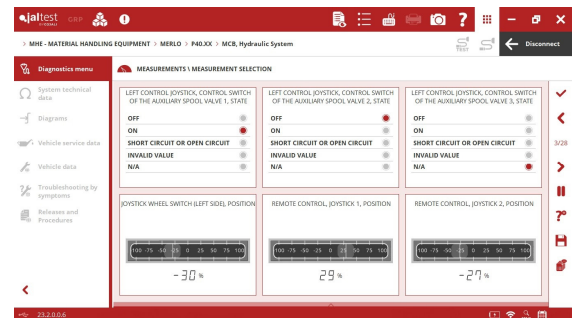
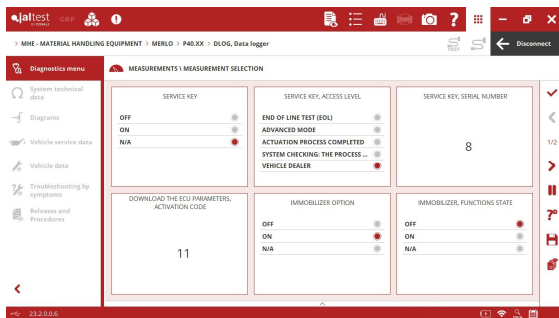
MANITOU

Procedure to reset the maintenance service in **MT400** and **MT600** telescopic handlers.

MERLO

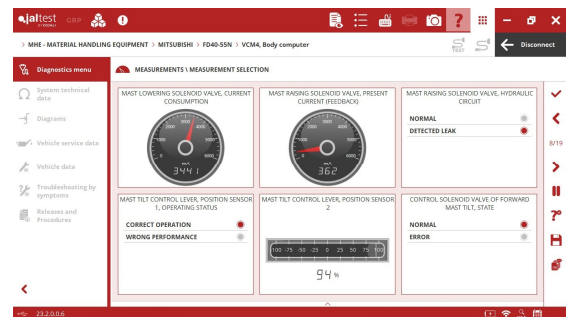
- ⊕ **DLOG** data logger system.
- ⊕ **MCB** hydraulic control system.

Both available in models of **Turbofarmer**, **Roto** and **Panoramic** families.

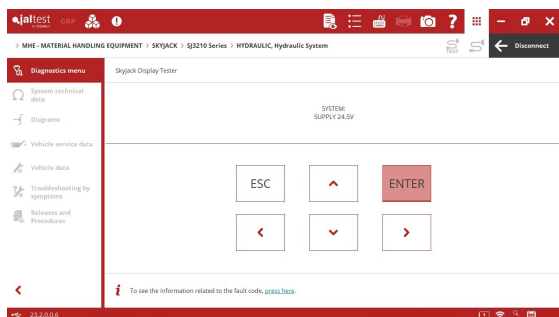


MITSUBISHI

- ⊕ **VCM4** central computer for **FD40-55N** and **FG40-55N** internal combustion forklifts.



SKYJACK



- ⊕ **HYDRAULIC** control system for models of **SJ Series**, **SJ Serie TH**, **SJ Serie THS**, **SJ Serie T**, **SJ Serie III** and **SJ Serie E** families. It includes manual diagnostics.

STILL

- ⊕ **Stage V DM02** engine control system for **RX70 (7394-7399 Series)** model.

TOYOTA

- ⊕ **ICH** central computer for **8PM Series** pallet jacks and **8SM Series** stackers.

Modification of the maintenance interval.

Modification of the machine displacement parameters, additional equipment and driving programs.

Wiring diagram configurations of the system, location images and technical data.

