

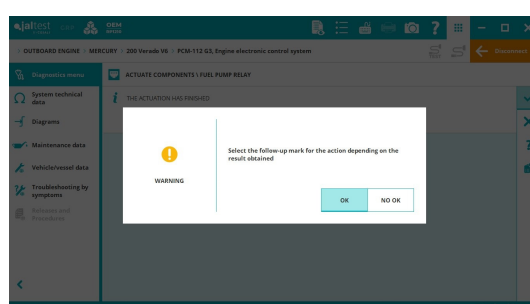
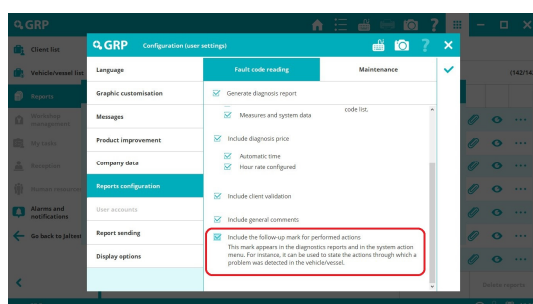


INNOVATIONS 23.2

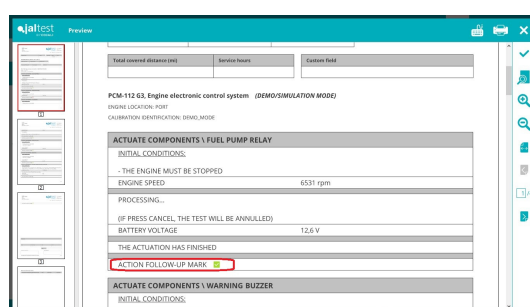
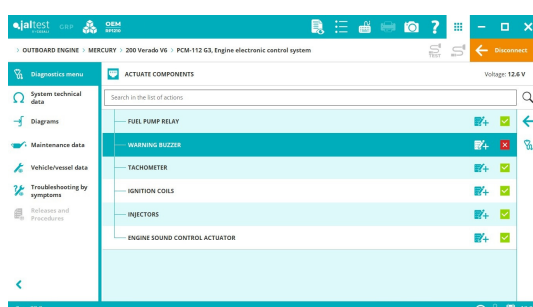
SOFTWARE INNOVATIONS

The new software version Jaltest 23.2 once again offers more improvements and innovations that consolidate this tool as a benchmark in multi-brand diagnostics for commercial vehicles, agricultural equipment, OHW equipment, material handling equipment and vessels.

This version includes the ability to configure a **follow-up check for performed diagnostics actions**.



This enables the user to include their opinion concerning the vehicle behaviour during the diagnostics session in the report.



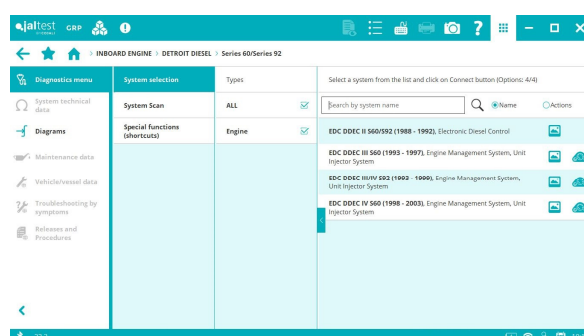
Finally, it is important to note the new access to the **GRP user manual** from Jaltest.

DIAGNOSTICS AND SYSTEMS

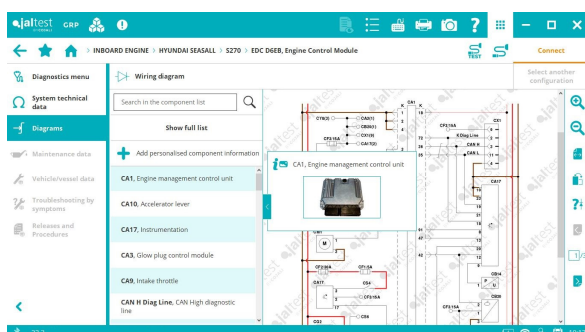
Take into account that this document is only a summary of the most relevant information of this new version. For further information, please visit Jaltest Report.

INBOARD ENGINE DETROIT DIESEL

- ⊕ **S92 Series EDC DDEC II** and **EDC DDEC III/IV** engine control systems.



HYUNDAI SEASALL



- ⊕ **S Series (S220, S250 and S270) EDC D6EB** engine control system. In addition, it has wiring diagrams and technical data.

CRUSADER / PCM

GCP engine control system, oxygen probe check of engines with catalytic converter.

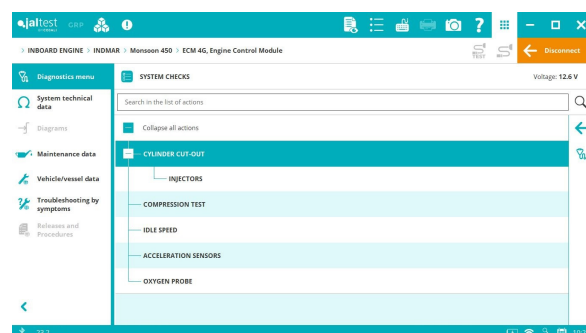
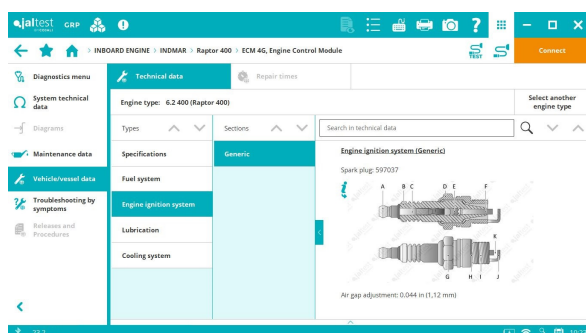
CUMMINS

QSB 4.5 ECM Port/Starboard engine control system, wiring diagram configurations and technical data in the system.

INDMAR

- ⊕ 6.2L models based on Ford: **Raptor 360, Raptor 400, Raptor 440, Monsoon 450, Raptor 460** and **Raptor 575** equipped with the **ECM 4G** engine control system.

SMART troubleshooting guides for all models with **EControls** engine control system.



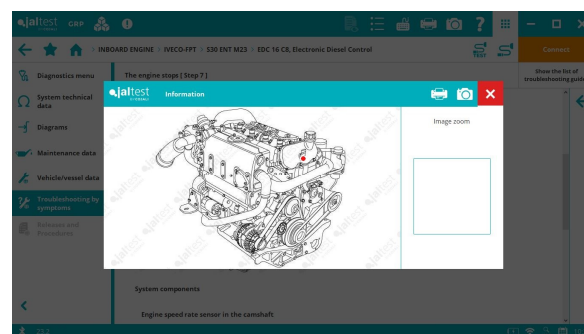
ILMOR

ECM 4G and **ECM MV8** engine control systems, oxygen probe check of engines with catalytic converter.

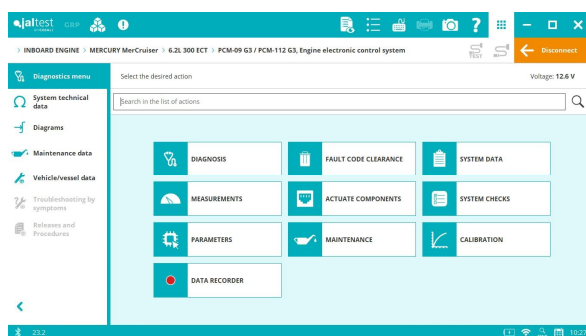
IVECO-FPT

New software references and variants for the **EDC 7 UC31** engine control system that applies to models such as **C13 ENT M50**, **C87 ENT M62** and **N67 ENT M57**.

SMART troubleshooting guides by symptoms in the **S30 ENT M23** model.



MERCURY



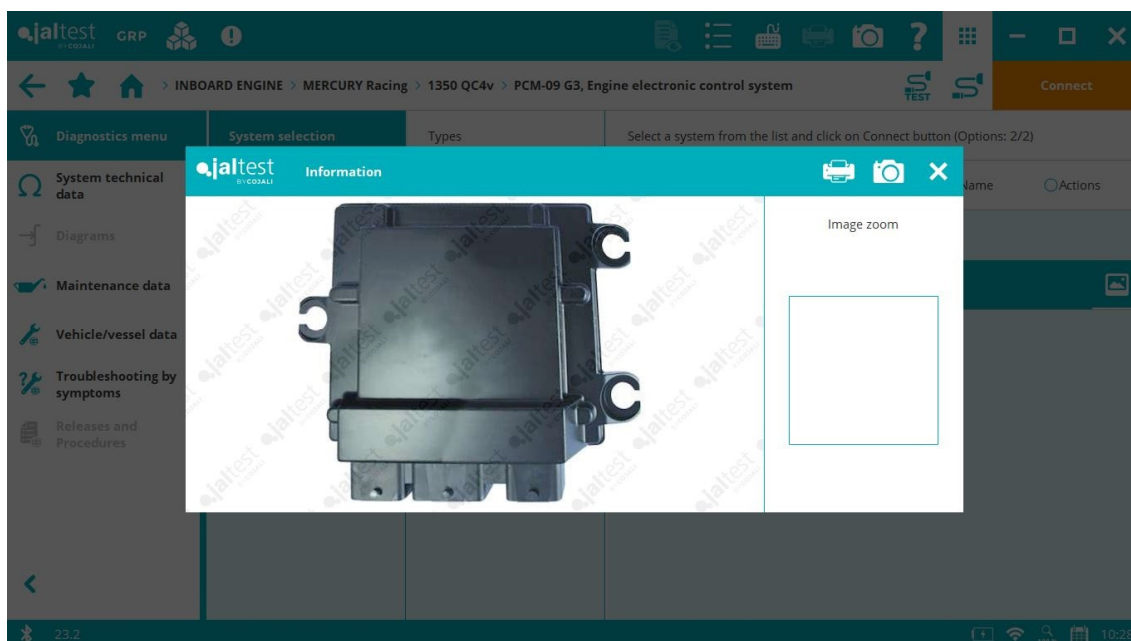
New software references and variants for the **PCM-112 G3** engine control system that applies to **[2021-2022]** years.

Real-time measurements concerning the emission control of the **PCM-112 G3** engine control system.

MERCURY RACING

⊕ **520**, **565**, **860 QC4v**, **1100 QC4v**, **1550 QC4v**, **1650 Q Raptor 400**, **Raptor 440**, **Monsoon 450** and **Raptor 575** models, among others, equipped with **PCM-09 G3**, **PCM-09 OBD-M** and **DTS** engine control systems.

Vessel technical data, maintenance services and **SMART** troubleshooting guides by symptoms for all brand models.



MTU

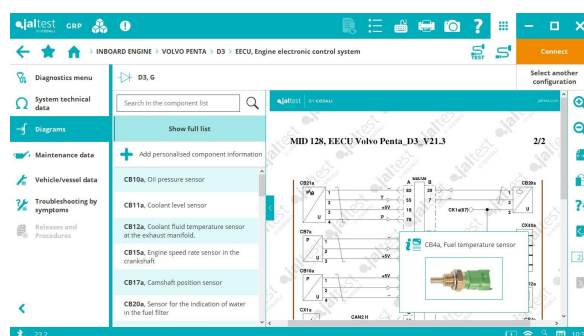
Vessel technical data and maintenance services for several models such as **4000 M54**, **16V 4000 M54**, **8V 4000 M53R** and **8V 4000 M54**.

ROTAX

Improvements in the connection control in vessels with more than one engine and new software references and variants.

VOLVO PENTA

Wiring diagram configurations, technical data and images in the EECU engine control system of **D3** model which also includes vessel technical data and maintenance services.

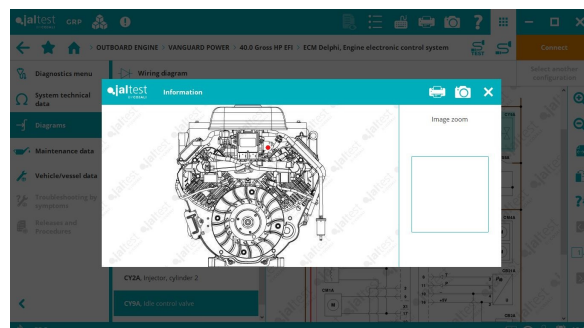
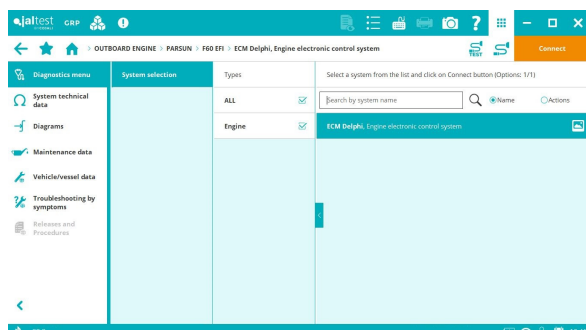


YANMAR

Component location images for families of **4BY3** and **6BY3** models and vessel technical data for families of **4BY**, **4JH** and **8LV** models, among others.

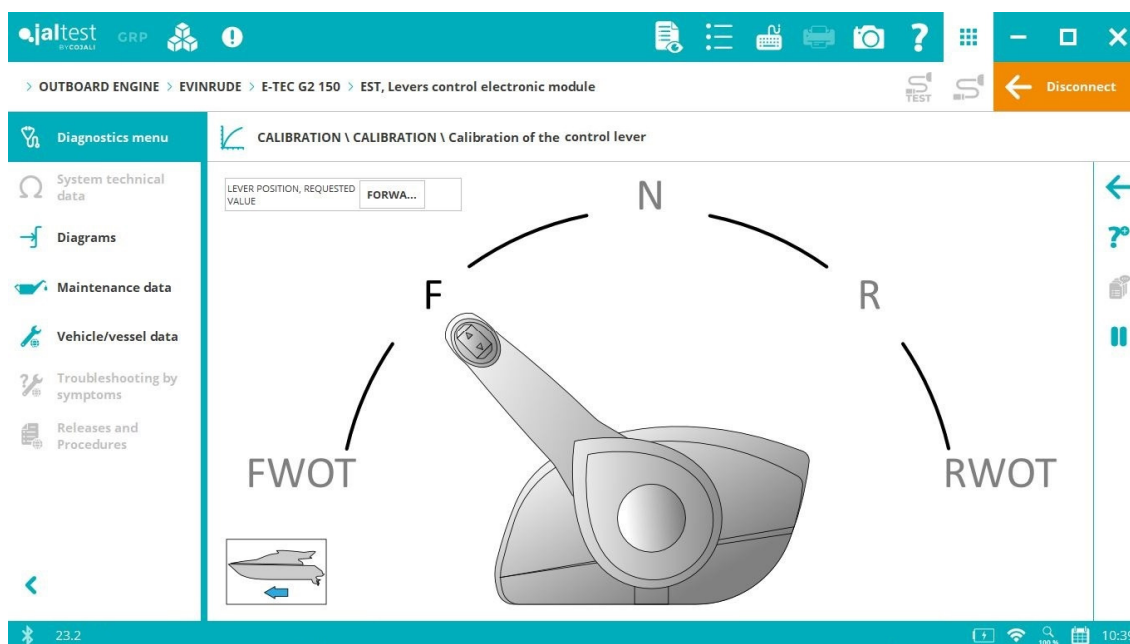
OUTBOARD ENGINE

In this version, **PARSUN** and **VANGUARD** brands have been added.



EVINRUDE

Electronic control module of **EST** levers, System Display in the calibration.



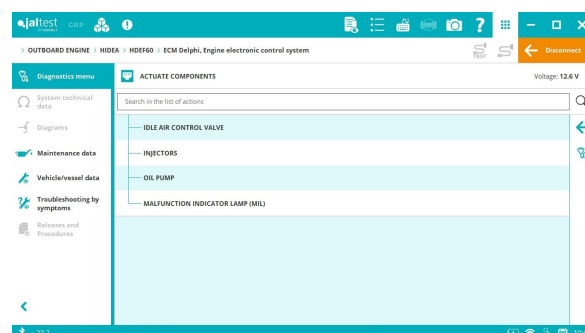
HIDEA

⊕ **MT05** engine control system that applies to **HFED20** and **HFED30** models.

MT22.1.1 engine control system, actuations of the oil pump and MIL lamp.

SMART troubleshooting guides by symptoms, vessel technical data and maintenance services for all brand models.

Wiring diagram configurations and technical data of **HDEF20** and **HDEF30** models.



HONDA

New software references of the engine control system for the following models: **BF75**, **BF200**, **BF225** and **BF250**.

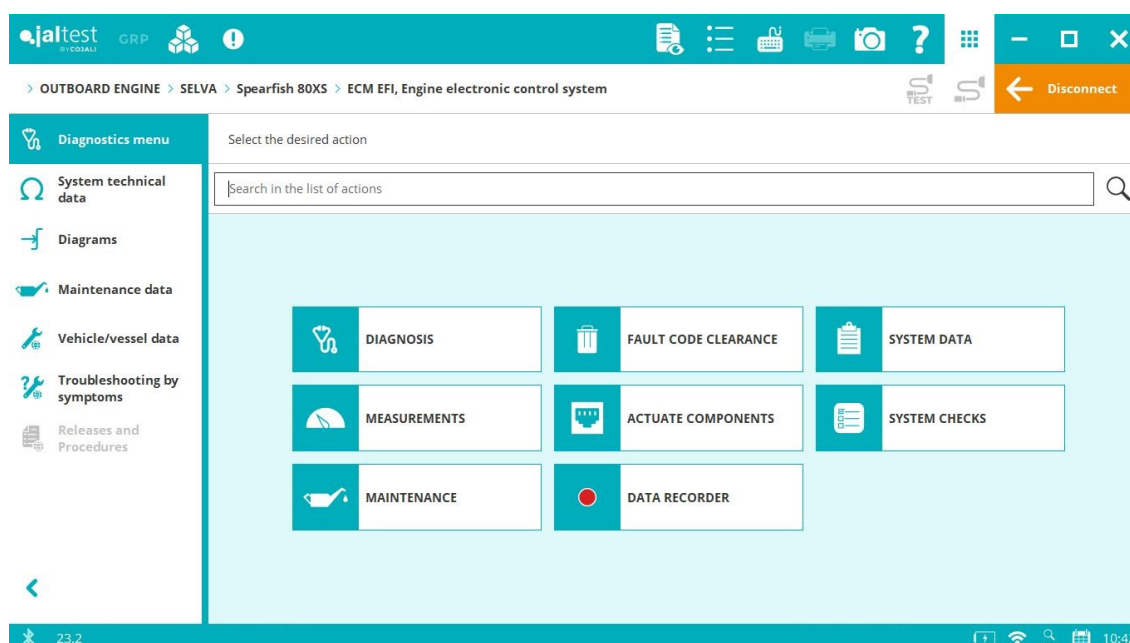
MERCURY

New software references and variants for the **PCM-112 G3** engine control system that applies to **[2021-2022]** years.

Real-time measurements concerning the emission control of the **PCM-112 G3** engine control system.

SELVA

⊕ **Spearfish 100XSR**, **Spearfish 80XS**, **Sei Whale 200**, **Beaked Whale** and **Amberjack 25** models, among others, equipped with the **ECM EFI** engine control system.



SUZUKI

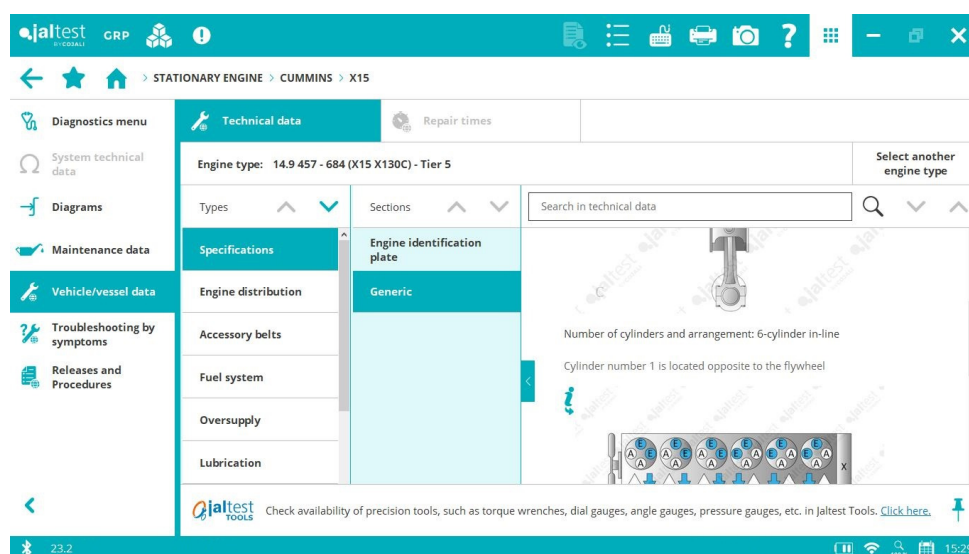
Wiring diagram configurations and technical data from 2018 engines onwards.

YAMAHA

ECM EFI engine control system, improvement in the control of the accelerator lever position in all system actions.

STATIONARY ENGINE

Overall, technical data in new **CUMMINS** engine types has been added.



CATERPILLAR

⊕ **C-2.8 / C-3.6** (on SAE J1939) engine control system.

⊕ **C-9.3B** (on SAE J1939) engine control system.

C2.2 (on SAE J1939) engine control system, actuations of the intake throttle valve, the cold start control relay and check of the injection rail pressure.

CUMMINS

Technical releases and procedures in **X15** engines such as “Check the fuel pump” and “Check for leaks in the turbocharger”. Technical releases in **B4.5 / B6.7** engines such as “Check for leaks in the oil cooler”, among others. In addition, new technical releases and procedures have been added in **L9** engines.

DEUTZ

EMR4 EDC17 CV56 (on SAE J1939) engine control system, maintenance service for the AdBlue/DEF module cleaning.

DOOSAN

- ⊕ **EDC DM02 / DM03** (on SAE J1939) engine control system.

HATZ

- ⊕ **JDC 568A** diagnostics cable.

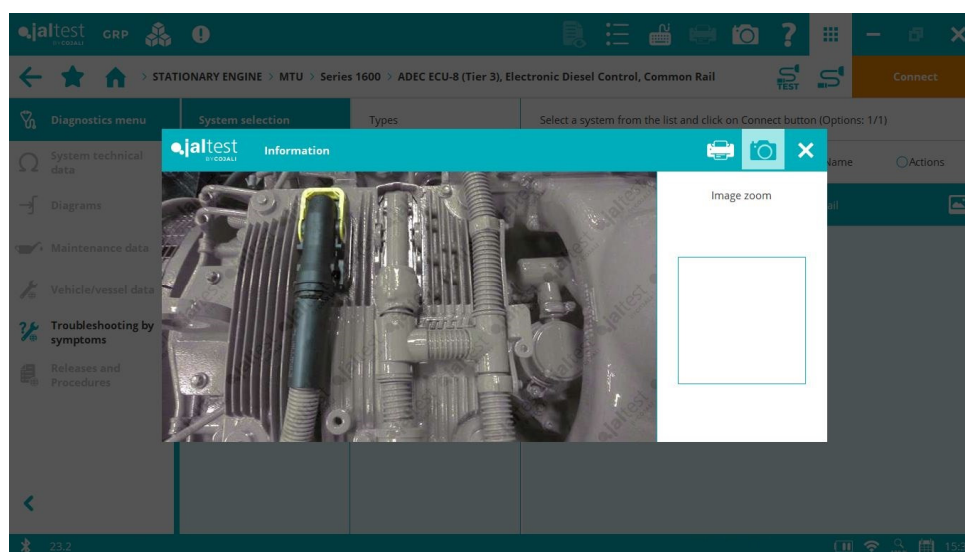
MERCEDES BENZ

ACM3 (on SAE J1939) anti-pollution system, check of the dosed quantity of AdBlue/DEF and maintenance services such as the diesel particulate filter regeneration and the exhaust gas aftertreatment system regeneration.

New wiring diagram configurations in **OM 470**, **OM 473**, **OM 933/934** and **OM935/936** models, among others.

MTU

- ⊕ **EDC ADEC ECU-8** system that applies to **1600 series** models.



PERKINS

Extended diagnostics coverage for the **904 J** (on SAE J1939) engine control system.

New wiring diagram configurations in **403J** and **404J** models.

VM MOTORI

TENNECO SCR/DEF (on SAE J1939) anti-pollution system, checks of the pump and the AdBlue/DEF pressure, dosing test, etc.

VOLVO PENTA

ACM exhaust gas aftertreatment system, diesel particulate filter regeneration with dynamic System Display.