



INNOVATIONS 23.2

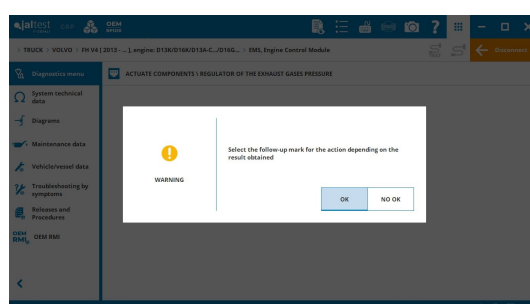
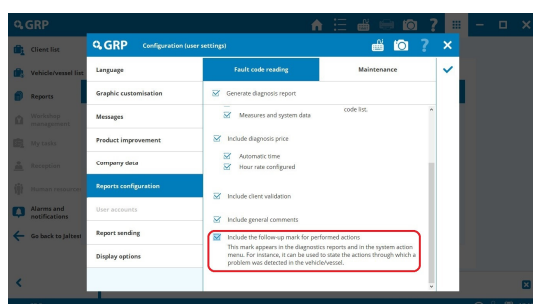
SOFTWARE INNOVATIONS

The new software version Jaltest 23.2 once again offers more improvements and innovations that consolidate this tool as a benchmark in multi-brand diagnostics for commercial vehicles, agricultural equipment, OHW equipment, material handling equipment and vessels.

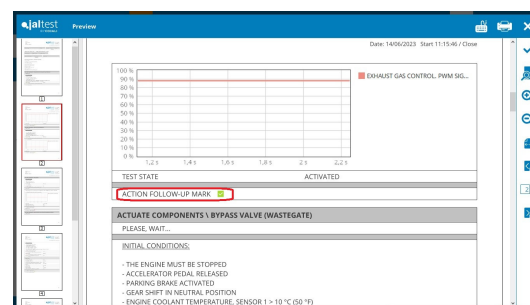
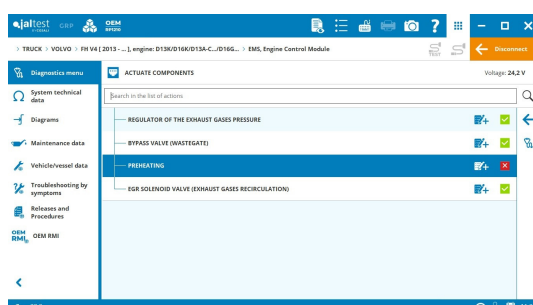
Overall, there are new improvements in the software usage, including the **control of the PC battery status** when running some of the advanced diagnostics functions.

- If the remaining battery percentage is less than 10%, a warning message is displayed when connecting to the system.
- If the remaining battery percentage is less than 25%, some advanced diagnostics functions cannot be run, such as some of the Diesel Particulate Filter regenerations.
- If the remaining battery percentage is within 25% - 50% range, a warning message is displayed when running the diagnostics functions of the previous section.

Another version innovation is the ability to configure a **follow-up check for performed diagnostics actions**.



This enables the user to include their opinion concerning the vehicle behaviour during the diagnostics session in the report.



Finally, it is important to note the new access to the **GRP user manual** from Jaltest.

BRANDS AND MODELS

Take into account that this document is only a summary of the most relevant information of this new version. For further information, please visit Jaltest Report.

Some of the new models and brands of this version are listed below.

CITRÖEN

Berlingo 1.6 HDi [B9] (9HX/9HW/9HT/9HZ/9HV/9HS) [2008 - 2012]

DENNIS EAGLE

Elite NAS1

FORD

Cargo 916

GMC/CHEVROLET

Blazer 2.8 Diesel Electronic

S10 2.8 Diesel Electronics

IVECO

Eurocargo Euro 6-E [2022 - ...]

Eurofire Euro 6-E [2022 - ...]

Onibus Latin America Euro 5

MERCEDES-BENZ

eCITARO

X-Klasse (470) (OM 669) [2017 - 2020]

NISSAN

NP300 Frontier 2.3 [2019 - ...]

PEUGEOT

e-Rifter [2021 - ...]

Rifter 1.5 BlueHDi (YHT/YHY/YHW/YHZ) [2018 - ...]

Partner 1.6 HDi [B9] (9HX/9HW/9HT/9HZ/9HV/9HS) [2008 - 2012]

RENAULT

Alaskan 2.3 dCi [2017 - ...]

SCANIA

R Series Euro 3, 4, 5 [2017 - ...]

S Series Euro 5 [2017 - ...]

TATA-DAEWOO

MAXIMUS KL3TX

MAXIMUS KL4T8

TOYOTA

Hilux SW4 3.0 16V D Turbo Intercooler (Engine: 1KDFTV) [2012 - ...]

VDL

SYNERGY Euro 6

VOLKSWAGEN

Volksbus 22.280 ODS Euro 5

VOLVO

FH V4 LNG [2017 - ...]

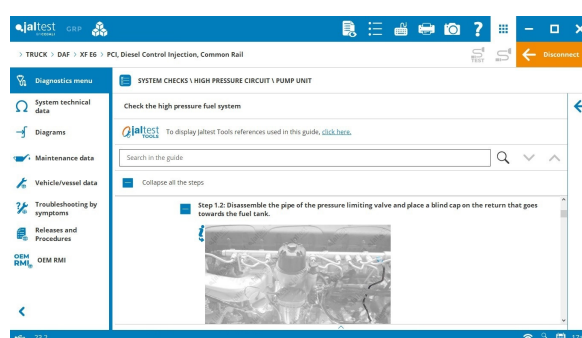
FM V4 LNG [2017 - ...]

DIAGNOSTICS AND SYSTEMS

Take into account that this document is only a summary of the most relevant information of this new version. For further information, please visit Jaltest Report.

This version includes new procedures in which the use of special tools from Jaltest Tools is essential, such as the reference **50105190 – ADBLUE/DEF MODULE CLEANING KIT**. New adapted kit for exhaust gas aftertreatment systems from **Cummins** manufacturer in **Ecofit UL2** applicable to **DAF**, **Mercedes-Benz** and **Scania** models.

In addition, there are new procedures for the use of reference **50105182 - HIGH-PRESSURE FUEL CIRCUIT TEST KIT** applicable to **Paccar MX13 Euro 6** engines.

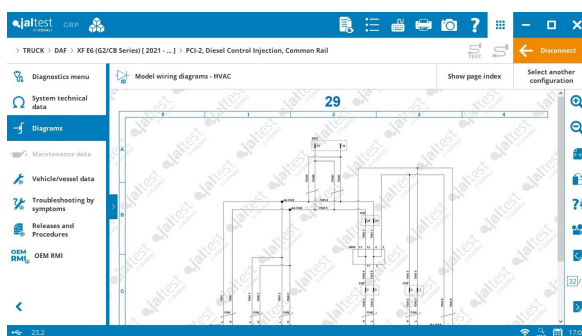
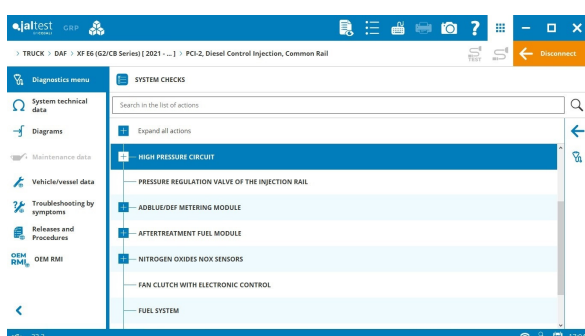


TRUCK

DAF

PCI-2 system for **XF, XG and XD Euro 6 [2021 - ...]** models, new functionalities such as fuel system checks as well as the accelerator pedal calibration.

In addition, new wiring diagrams by model and technical information of **EBS-3**, **IVI**, **CSM**, **CMR** and **CMF** systems have been added.



PCI KWP2000 engine control system, validation test of the accelerator pedal.

VECU vehicle control unit, activation of external lights, resets of the rain sensor and the ambient light control unit.

VIC-3 vehicle control unit, air leak test.

IVECO

⊕ **EDC MD1CE101 + Denox 6-HD** engine control system for **Tector Euro 6-E** engines in **Eurocargo Euro 6-E** and **Eurofire Euro 6-E** models.

EDC MD1 + Denox 6-HD engine control system, replacement of components of the exhaust gas aftertreatment system and other components of the **Cursor** engine control system in **X-Way**, **T-Way** and **S-Way** models.

AHW water additional heater, system component actuations.

MAN

CVM2 central computer, configuration of intermediate speed rates.

HVAC climate control system and **RIO** chassis electronic module in vehicles with **TG3** technology, bidirectional activations.

DIOD and **DIOC** driver and passenger door modules, power window calibration.

AWH water additional heater, service reset or fuel pipeline load.

MERCEDES-BENZ

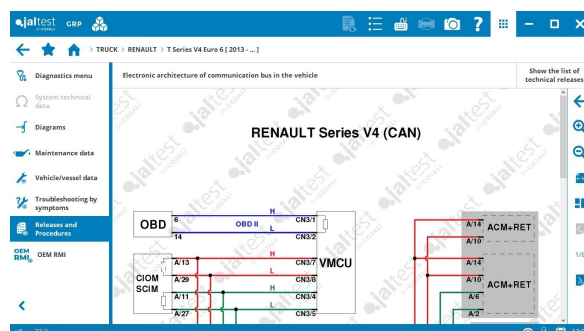
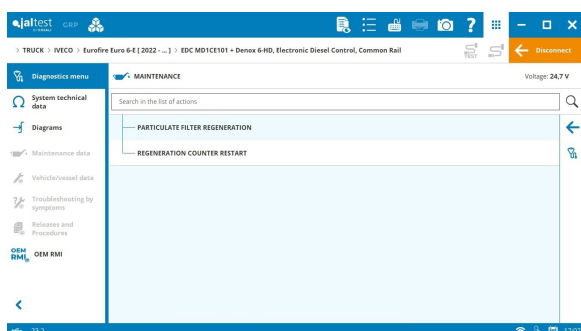
ASAM advanced cabin module for [2019 - ...] models, parameter modification of the fuel system and configurations of the switches, vehicle equipment, lights, etc.

RENAULT

In vehicles with **V4 technology**:

New electronic architecture of the communication bus in the vehicle.

APM compressed air production management system and **TECU** transmission, new measurements.



SCANIA

EEC3 exhaust gas aftertreatment system, AdBlue/DEF module cleaning with the use of the AdBlue/DEF cleaning kit of Jaltest Tools.

- ⊕ **EMS10** engine control system.
- ⊕ **AMSI** exhaust gas aftertreatment system.

VOLVO

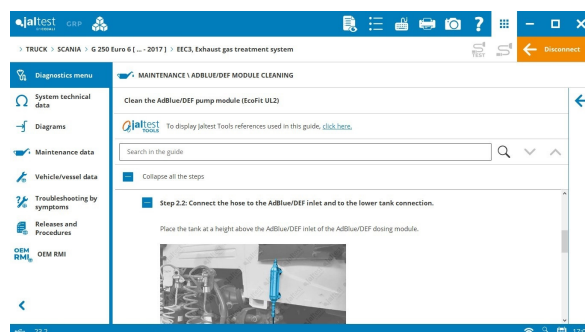
In vehicles with **V3 technology**:

ADAS system of **LPOS** lane position object sensor, new measurements.

In vehicles with **V4 technology**:

EMS engine control system for **FH V4 LNG** and **FM V4 LNG** gas models.

EMS diesel engine control system, engine protection parameters.



BUS

BYD

Wiring diagrams by model.

IRIZAR

VSE ETS steering control unit, new measurements.

SCANIA

BMU drive-battery management system in **K320 UB** and **K320 EB** hybrid models, activations in the System Display.

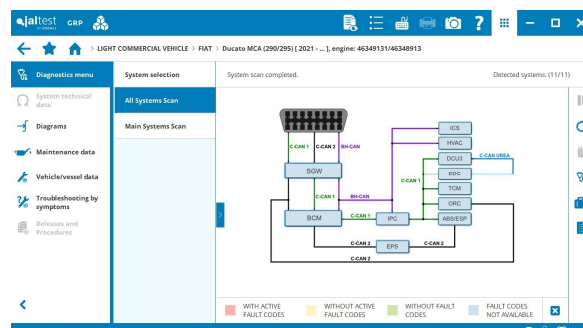
VDL

Wiring diagrams by model in **FUTURA Euro 6**, **CITEA Euro 6**, **SB4000 Euro 4/5** and **SBR4000 Euro 6**.

LIGHT COMMERCIAL VEHICLE

FIAT

Display of architecture of the communication network in the system scan in **Ducato MCA Euro 6e** model.



IVECO

Wiring diagrams by model in **Daily MY2019**.

EDC MD1 engine control system, regeneration and reset of the Diesel Particulate Filter for **Daily MY2021** models, alternator check, injector test, etc.

ISUZU

4JJ3-TC engine control system for **D-Max 3.0 Diesel Turbo** models, Diesel Particulate Filter regeneration and component replacement.

4JZ1-TC engine control system for **N-Series Euro 6E** models, calibration of the EDU injection control module.

MERCEDES-BENZ

SAM central computer, battery reset after the component replacement in **Sprinter 907/910** models.

⊕ **STH** auxiliary heating in **Sprinter 907/910** models.

MRD1 OM654 engine control system in **Sprinter 907/910** and **Vito 447** models, SCR warning reset.

NISSAN

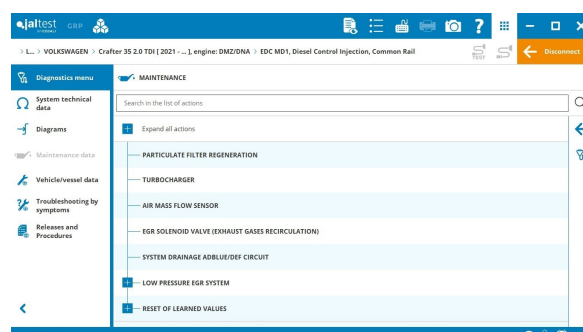
⊕ **ICC**, **LASER/RADAR**, **IPDM** and **AWD** systems in **Navara NP300** model.

PSA GROUP

Wiring diagrams by model in **e-Jumpy/e-Expert**.

VOLKSWAGEN

EDC MD1 engine control system, system checks and maintenances such as the diesel particulate filter regeneration for **Crafter [SY/SZ]** and **T6.1** models with **DMZ/DNA** engine.



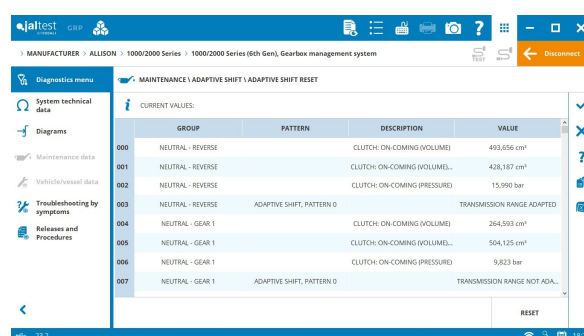
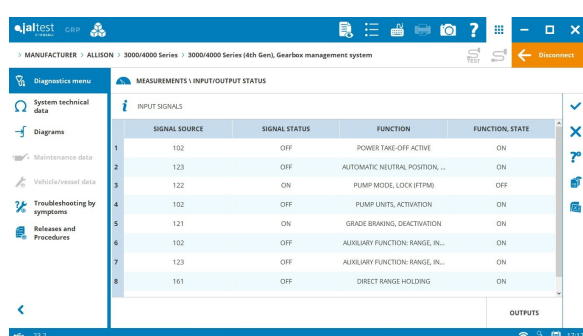
MANUFACTURER

ALLISON

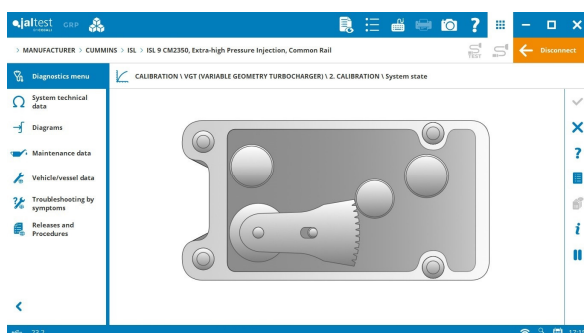
Allison 6th Gen transmission, adaptive shift reset.

Allison 5th Gen transmission, parameter configuration related to the bodywork, gear shift and oil filter reset.

Allison 4th Gen transmission, configuration of the vehicle speed sensor.



CUMMINS



Ecofit UL2 module cleaning procedure.

Graphic display through a System Display of the installation and calibration processes of the Variable Geometry Turbine.

INTERNATIONAL

New 100 **SMART** troubleshooting guides have been added in the **MWM 4.12/6.12TCE** engine control system.