

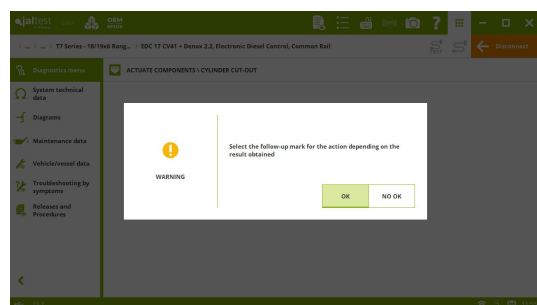
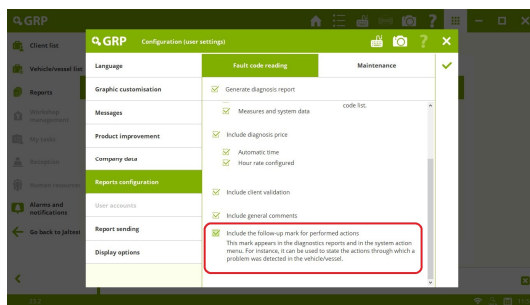


INNOVATIONS 23.2

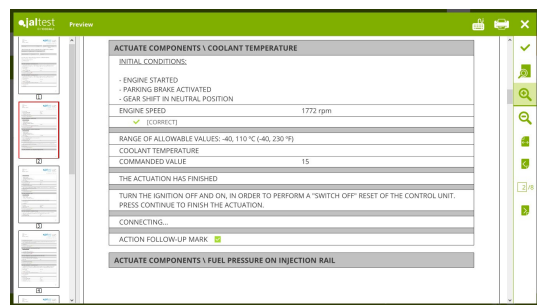
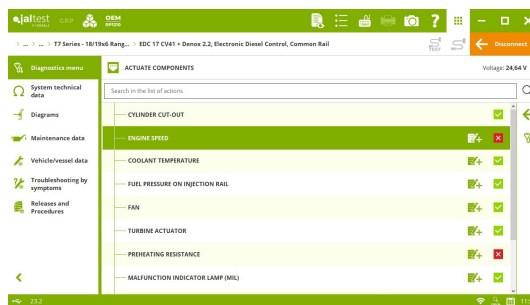
SOFTWARE INNOVATIONS

The new software version Jaltest 23.2 once again offers more improvements and innovations that consolidate this tool as a benchmark in multi-brand diagnostics for commercial vehicles, agricultural equipment, OHW equipment, material handling equipment and vessels.

This version includes the ability to configure a **follow-up check for performed diagnostics actions**.



This enables the user to include their opinion concerning the vehicle behaviour during the diagnostics session in the report.



Finally, it is important to note the new access to the **GRP user manual** from Jaltest.

BRANDS AND MODELS

Take into account that this document is only a summary of the most relevant information of this new version. For further information, please visit Jaltest Report.

Some of the new models and brands in Jaltest are listed below.

TRACTOR

This version includes a new tractor brand: **REFORM**.

ARBOS

3075, engine: Tier 5/Stage V

CLASS

Arion 6X0 - Hexashift (A96), engine: Tier 5/Stage V

Arion 6X0 - Cmatic (A97), engine: Tier 5/Stage V

FENDT

300 Vario Series, engine: Tier 5/Stage V

500 Vario Series (Power/PowerPlus/Profi/ProfiPlus), engine: Tier 5/Stage V

900 Vario Series, engine: Tier 5/Stage V

MASSEY FERGUSON

5S / 6S / 7S / 8S Series

4700 M Series

5700 M Series

8700 S Series

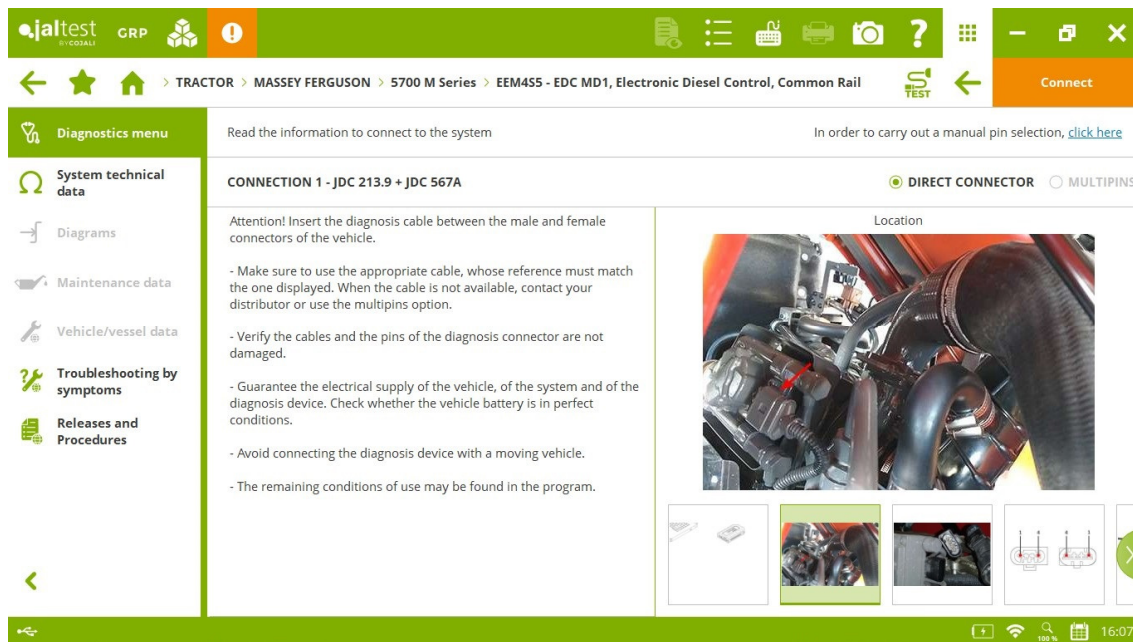
McCORMICK

X5 Series, engine: Tier 5/Stage V

NEW HOLLAND

T3000 Series

T4 Series (PowerStar), engine: Interim Tier 4/Stage IIIB



VALTRA

G Series

N XX5 (H/A/V/D) Series

S XX4 Series

VERSATILE

195 / 210 Tractor

530 / 580 DT Tractor

HARVEST EQUIPMENT

This version includes two new harvest equipment brands: **AVR** (Root harvesters) and **MONCHIERO** (Harvesters of nuts and fruit trees).

CLAAS

Trion Series combine harvesters.

SELF-PROPELLED AND TRAILING IMPLEMENT

This version includes brands such as **MONCHIERO** (Orchard sweepers), **REFORM** (Utility vehicle), **RMH** (Self-propelled mixer wagons) and **VREDO** (Slurry/Manure).

DIAGNOSTICS AND SYSTEMS

Take into account that this document is only a summary of the most relevant information of this new version. For further information, please visit Jaltest Report.

Overall, there are new technical information and troubleshooting guides (now **SMART guides**) by symptoms and of the most common fault codes in the workshop thanks to the communication channels with clients such as the technical support offered by the project, training, Jaltest Feedback and "Product improvement" option.

It is important to note the maintenance service of the AdBlue/DEF module cleaning in the **Deutz EMR4 - EDC 17 CV56** engine control system and the **Sisu EEM4S5 - EDC MD1** engine control system.

TRACTOR

ARBOS

⊕ **Doosan Tier 5/Stage V DM02** engine control system.

CASE IH

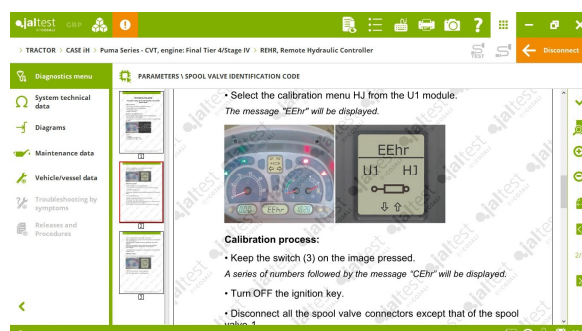
⊕ **BRK** brake system in **Farmall U Series** and **Luxxum Series** models with **Tier 5/Stage V** engines.

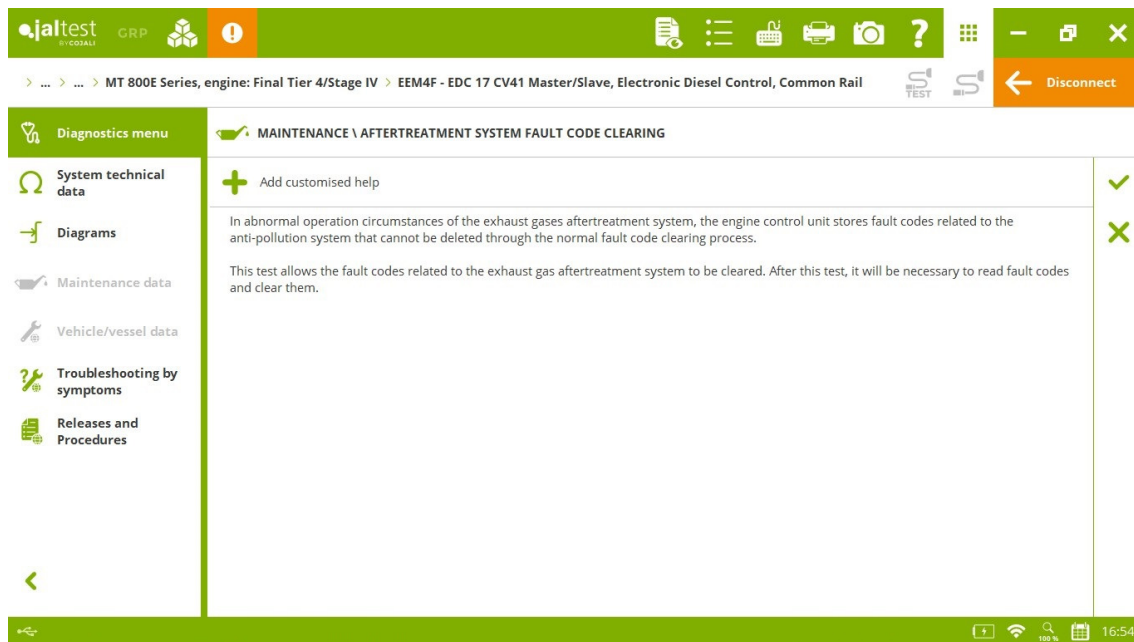
Hitch hitch control system, rear lift calibration for **Farmall V/N/F/CL Series** and **Quantum V/N/F/CL Series** models with **Interim Tier 4/Stage IIIB** engines.

REHR Remote Hydraulic Controller, spool valve coding.

CHALLENGER

Sisu EEM4F - EDC 17 CV41 Master/Slave engine control system, checks and maintenance services for **MT 800E Series** and **MT 900E Series** models with **Final Tier 4/Stage IV** engines.





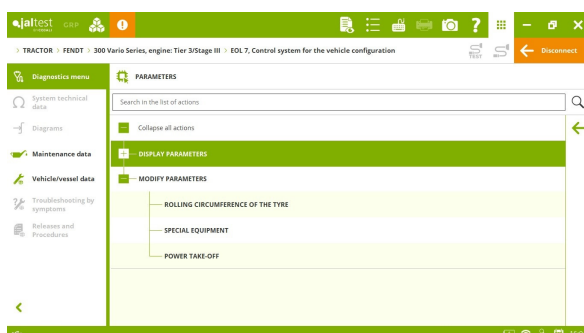
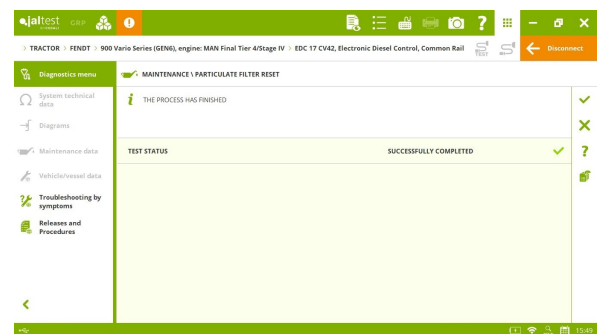
CLAAS

Technical releases “*Rear lift calibration*” for **Nexus (A47)** model and “*Engine oil maintenance reset*” for **Elios (A28/A48)** model in the **FPT Interim Tier4/Stage IIIB EDC 17 C49** engine control system.

FENDT

MAN EDC 17 CV42 engine control system, checks and Diesel Particulate Filter reset.

Chassis Controller powertrain control module, wiring diagram configurations for **900 Vario MT Series** and **1100 Vario MT Series** models with **Final Tier 4/Stage IV** engines.



+ **EOL 7** vehicle configuration control system for **300 Vario Series** model with **engine: Tier 3/Stage IIIA**.

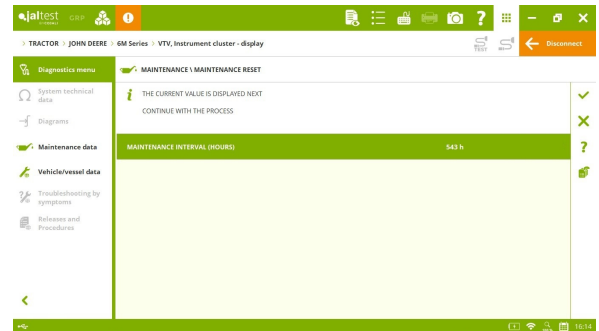
JOHN DEERE

ECU HPCR (Level 40) engine control system, activations of the EGR valve and the fuel supply pump for **8R** and **9R Series** models.

SCC hydraulic system, parameter configuration of the spool valves for **5R Series** model.

VTV instrument cluster, maintenance reset for **6M Series** model.

SMART troubleshooting guides by fault code in the **PTR** transmission and the **CCU** central computer.

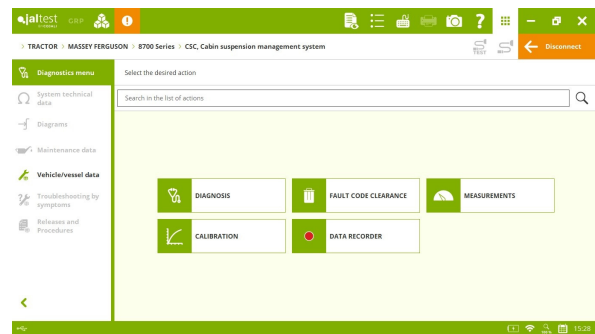
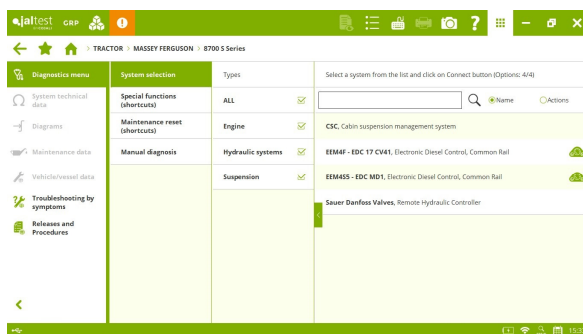


KUBOTA

Cummins B6.7 engine control system, parameter configuration and reset of the stroke of the exhaust gas throttle actuator for **M8 Series** model.

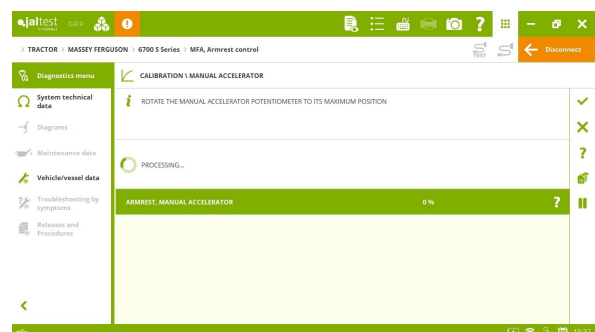
MASSEY FERGUSON

- ⊕ **PVED** automatic driving system.
- ⊕ **CSC** suspension control system.
- ⊕ **ATC** climate control.

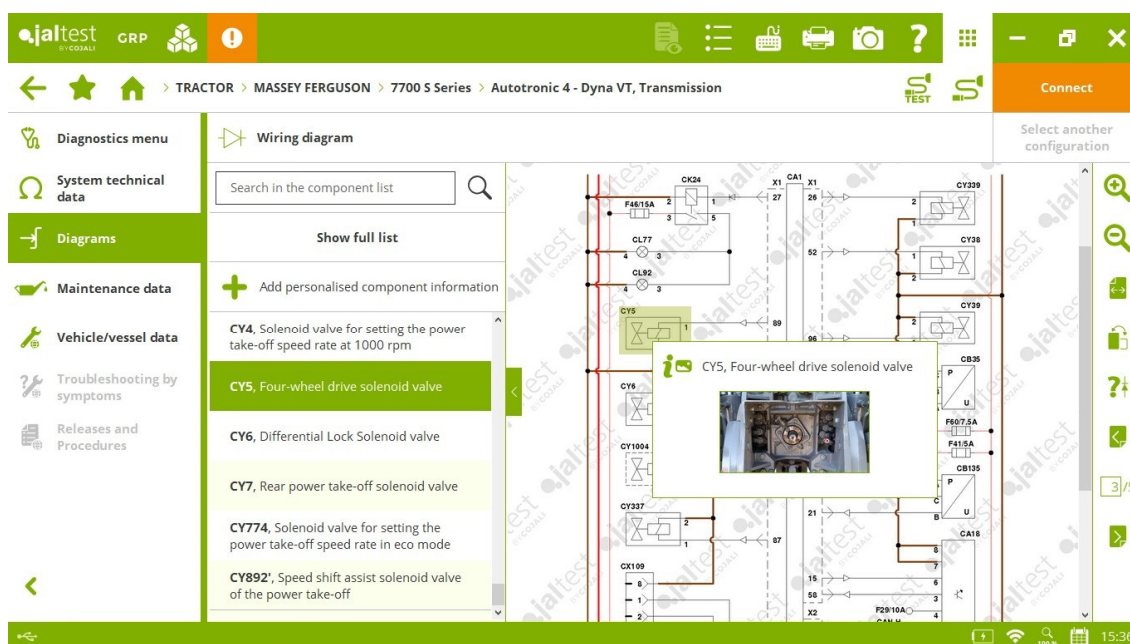


Autotronic 5 – TECU suspension control system in the front axle, activations, parameter configurations and calibration for **5700 S/SL Series**, **6700 S Series**, **7700 Series** and **7700 S Series** models.

MFA armrest control system, new calibrations of the joystick, the manual accelerator and the hydraulic lift potentiometer for **5700 S/SL Series**, **6700 S Series**, **7700 Series** and **7700 S Series** models.



Wiring diagrams configurations in **Autotronic 5 - Dyna 4**, **Autotronic 5 - Dyna 6** and **Autotronic 4 - Dyna VT** transmissions for **7700 S Series** model. In addition, there are new technical data and location images in these transmissions as well as in the **Autotronic 5 - Power Shuttle** transmission for **5400 Series** model and in the **MFA** armrest control system for **8700 Series** model.



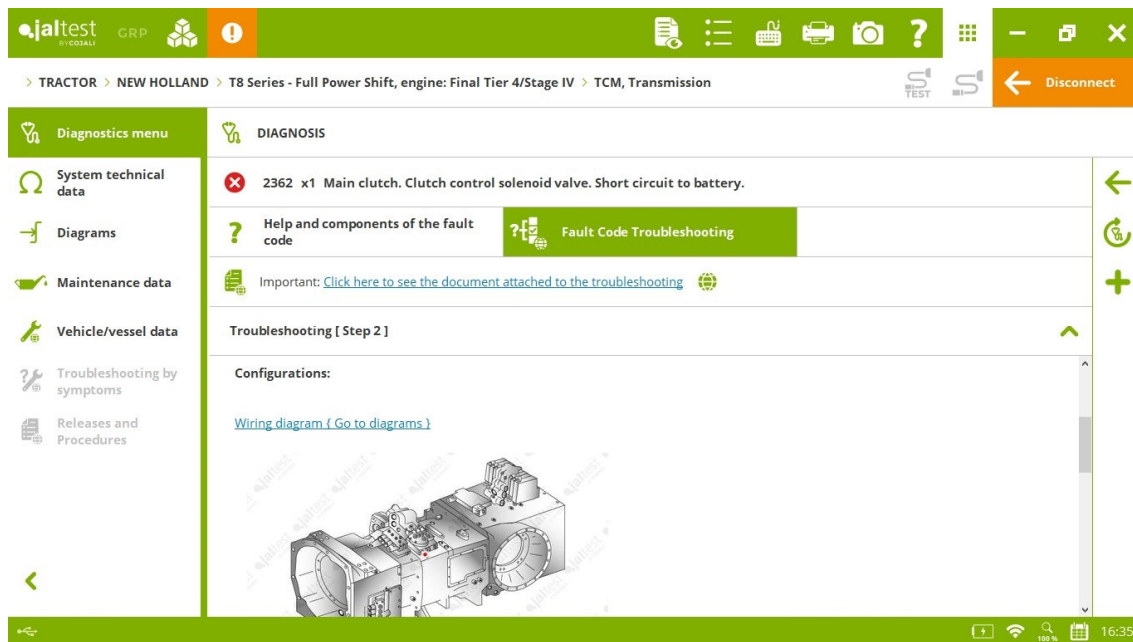
NEW HOLLAND

⊕ **ADIC** instrument cluster, **BRK** brake system and **EDC** hydraulic lift system for **T5 Series - Electro Command** model with **engine: Tier 5/Stage V**.

MV Remote Hydraulic Controller, calibration of the spool valve control levers.

ADIC instrument cluster, reset of the oil change warning lamp for **T5 Series - Dual Command** model with **engine: Interim Tier 4/Stage IIIB**.

SMART troubleshooting guides by fault code in **TCM** and **TCM CVT** transmissions.



ROSTSELMASH

Cummins X12 CM2350 engine control system, parameter configuration and AdBlue/DEF module cleaning for **RSM 2400** model.

SAME

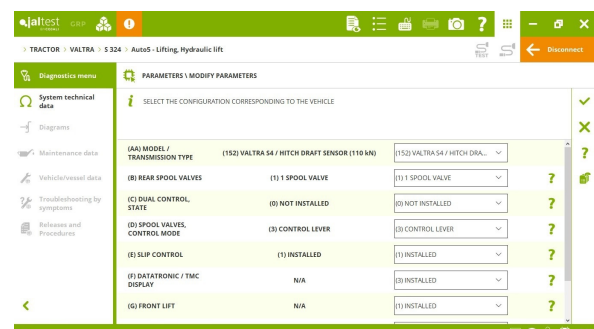
Display System Scan multiplex system, improved direct connection and individual connections to all systems for **Rubin Series** model.

STEYR

EDC3 hydraulic lift, calibration of the rear lift position sensor for **CVT Series** models with **engine: Tier 3/Stage III** and **CVT Series** with **engine: Interim Tier 4/Stage IIIB**.

VALTRA

Auto5 - Lifting hydraulic lift, parameter configuration of the rear lift for **S XX4 Series** models.



VERSATILE

⊕ **Cummins QSC 8.3 CM850** engine control system for **305 Tractor** model.

HARVEST EQUIPMENT

It is important to note the maintenance service of the AdBlue/DEF module cleaning in the **Sisu EEM4S5 - EDC MD1** engine control system in models of **FENDT** and **MASSEY FERGUSON** brands.

In addition, extended coverage in the parameter configuration in the **Volvo EMS V4** engine control system, which is in numerous models of brands such as **AGRIFAC**, **HOLMER**, **ROPA** or **WEISS McNAIR**.

CLAAS

Cummins B6.7 engine control system, parameter configuration and reset of the stroke of the exhaust gas throttle actuator for **Avero Series** model.

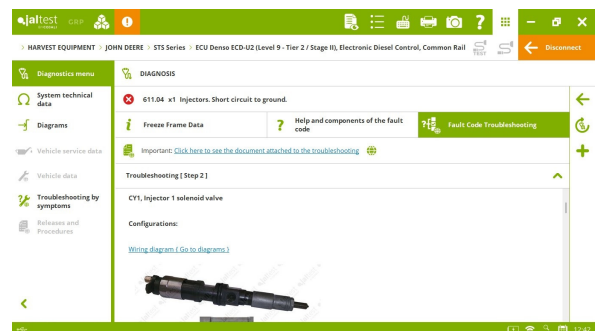
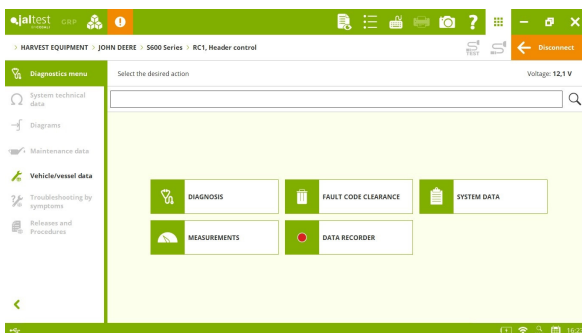
FENDT

MAN EDC 17 CV42 engine control system, checks and Diesel Particulate Filter reset for **IDEAL Series** model.

JOHN DEERE

- ⊕ **RC1** harvest system.
- ⊕ **MHC** electronic module control system.
- ⊕ **EIC** immobiliser.

ECU HPCR (Level 40) engine control system, activations of the EGR valve, and the fuel supply pump for **CH900 Series** and **X9 Series** models.



SMART troubleshooting guides by fault code in the **ECU EUI (Level 15 - Tier 3 / Stage III A)** engine control system.

NEW HOLLAND

FPT EDC 17 CV41 + Denox 2.2 (Vector) engine control system, activations of the Malfunction Indicator Lamp and the preheating resistance for **FR Series** model.

SELF-PROPELLED AND TRAILING IMPLEMENT

It is important to note the maintenance service of the AdBlue/DEF module cleaning in the **Deutz EMR4 - EDC 17 CV56** engine control system in models of **AMAZONE, ENERGREEN, FARESIN, RMH or TECNOMA** brands.

JOHN DEERE

SMART troubleshooting guides by fault code in the **ECU Denso ECD-U2 (Level 9 - Tier 2 / Stage II)** engine control system.