



INNOVATIONS 23.1

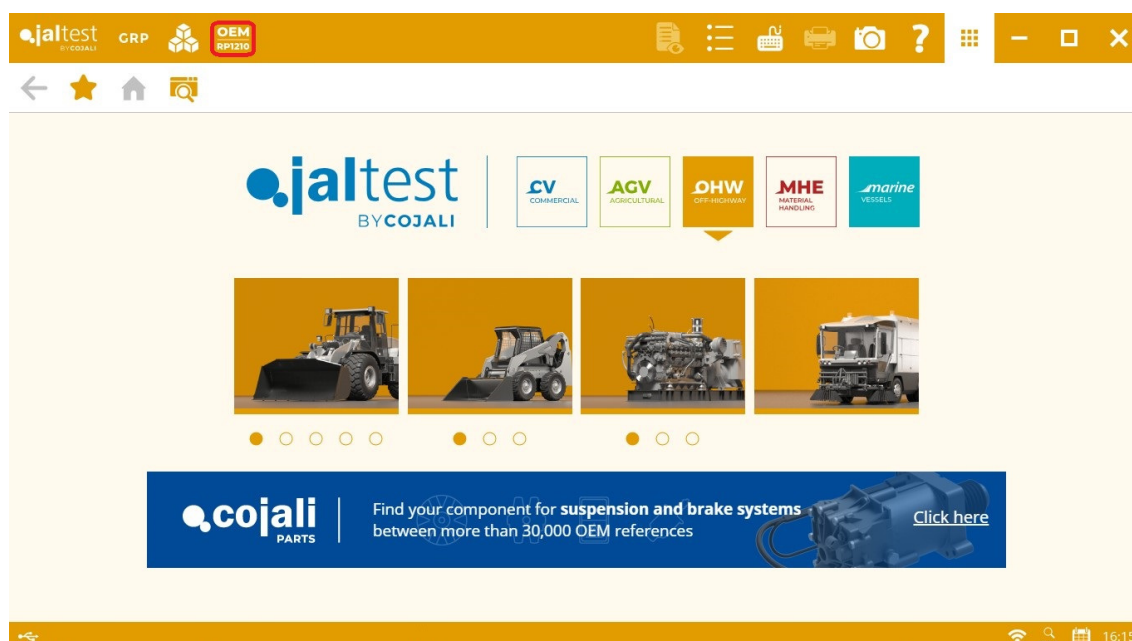
SOFTWARE INNOVATIONS

The new software version Jaltest 23.1 once again offers more improvements and innovations that consolidate this tool as a benchmark in multi-brand diagnostics for commercial vehicles, agricultural equipment, OHW equipment, material handling equipment and vessels.

Overall, there are new improvements in the software usage, including:

- Ordering the measurement display by the user.
- Displaying the support information of a System Display in an action.
- Improved parameter confirmation with more limits, conditions and exceptions.

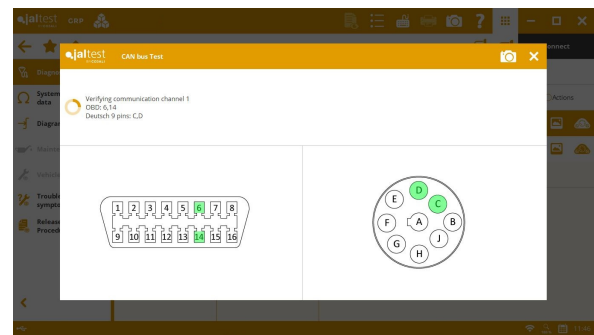
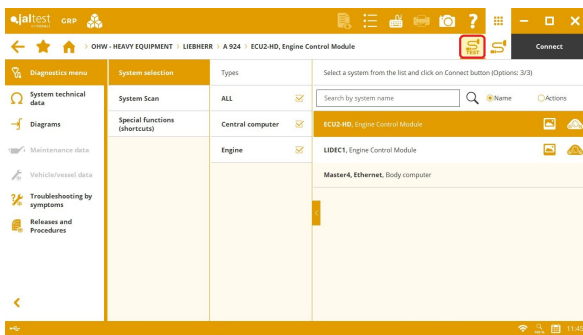
The additional module OEM|RP1210 module has also been added. Through the module OEM|RP1210 it is possible to configure and execute diagnostics tools of manufacturers that have been designed according to the standardised communication method RP1210, which defines good practices established by the TMC organisation with the aim of using communication devices compatible with this standard, such as Jaltest Link.



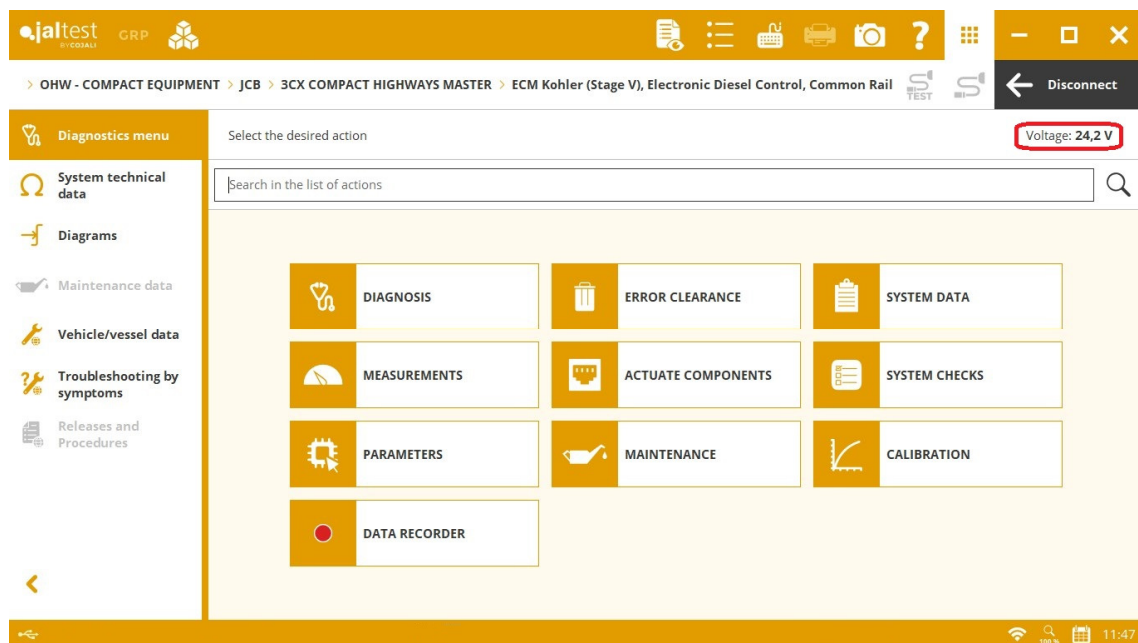
This version also enables the download of the **Jaltest University** training program from additional modules.

Connection test and communication bus test

Shortcut to the connection test and the communication bus test of the vehicle, allowing to verify the power supply, as well as the connection and communication errors in the diagnostics connector of the vehicle. In addition, enhanced display of the communication bus test by indicating the pins of the OBD and 9-pin Deutsch connectors that are checked.



The supply voltage of the system is also displayed throughout the diagnostics session.

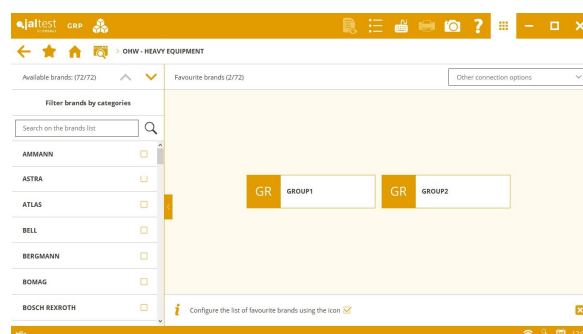
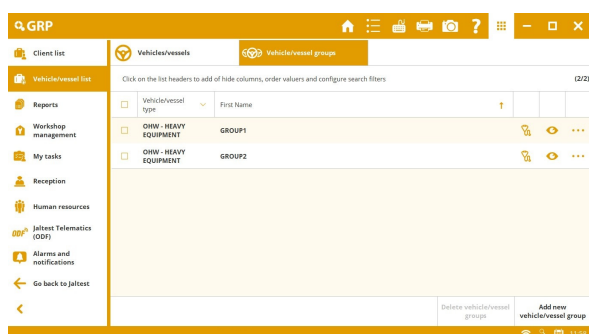


GRP

Improved user experience in GRP thanks to the following innovations:

- Saving audios assigned to a report.
- Creating alarms from client lists, vehicles or reports.
- Improved management of report e-mail sending.
- GRP Analytics information by device in GRP Enterprise.

In addition, shortcuts to GRP vehicles can be created as favourites in brand forms. The management is performed from the vehicle list. This allows the user to create shortcuts to client fleets, vehicles, etc.



BRANDS AND MODELS

Take into account that this document is only a summary of the most relevant information of this new version. For further information, please visit [Jaltest Report](#).

OHW - HEAVY EQUIPMENT

In this version, the following brands have been added: **BERGMANN**, **FUCHS**, **TAYLOR** and **TEREX FINLAY**.

DEMAG

New models, 1 family and 4 models included.

KOMATSU

New models for **Serie 7** rigid dumpers.

OHW - COMPACT EQUIPMENT

In this version, **EUROTRAC**, **THWAITES** and **VENIERI** brands have been added, increased number of models in **JCB**, **SANY** and **YANMAR** brands and **Serie Compact** excavators have been created in the **LIEBHERR** brand.

STATIONARY ENGINES

SCANIA

New models, 17 **Stage V** models included.

MULTI-PURPOSE VEHICLES

In this version the following brands have been added: **AEBI**, **MACRO CLEAN** and **LINDER**

DIAGNOSTICS AND SYSTEMS

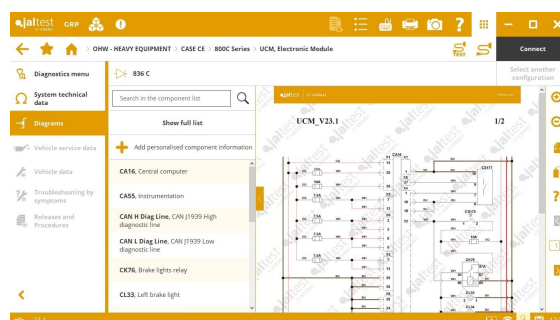
Take into account that this document is only a summary of the most relevant information of this new version. For further information, please visit Jaltest Report.

It is important to highlight the continuous development of advanced functions. For example, the **Deutz EMR4 ED17 CV52** engine control system, that applies to several brands such as **AMMANN**, **HAMM**, **MECALAC** or **SANY**, includes the check of the AdBlue/DEF module cleaning.

OHV - HEAVY EQUIPMENT

CASE CE

New wiring diagram configurations in **1000M**, **2000M** and **800C** models.



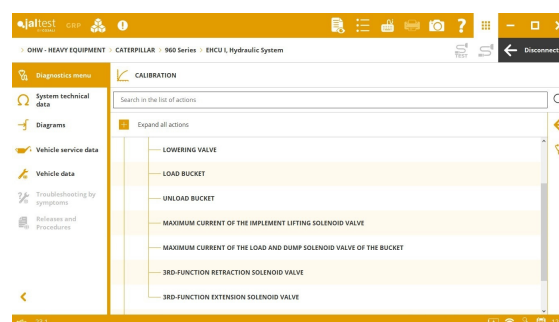
CATERPILLAR

C-7.1 (on SAE J1939) engine control system among others, exhaust and intake system check, maintenance for the ash cleaning regeneration and high-pressure pump calibration of the fuel system.

EHCUI (on CDL) hydraulic control system for wheel loaders, implement system calibrations.

TTT (on CDL) hydraulic control system for **D6R** dozer, automatic calibration of the adjustment solenoid valves of the brake pressure.

New wiring diagram configurations in **D11**, **D9**, **D6** dozers.



DEMAG

Deutz EMR2 - EDC engine control system, actuations of the output signals of the control unit.

DOOSAN

Doosan DL06/DL08 EDC17 CV41 engine control system that includes the maintenance for the SCR catalytic converter regeneration and the System Display of the fuel system.

HITACHI

MC central computer system for **ZX – 5 Series** excavators, implement parameter configuration.

JOHN DEERE CE

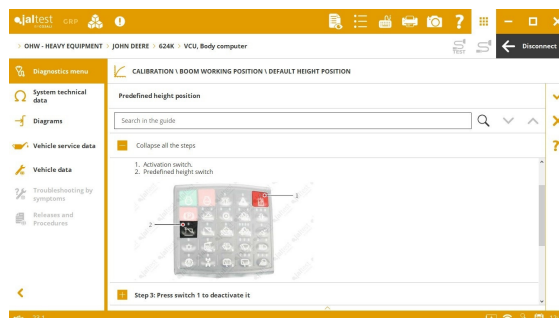
- ⊕ **VC2** central computer for motor graders.
- ⊕ **HVC** hydraulic control system for motor graders.
- ⊕ **AVC** hydraulic control system for motor graders.
- ⊕ **VCU** central computer for **L Series** wheel loaders.

TCU transmission for **Serie J** wheel loaders, transmission calibration.

VCU central computer for **Serie K** wheel loaders, implement calibrations.

MC central computer system for excavators, implement parameter configuration.

New wiring diagram configurations in **K Series** and **L Series** wheel loaders.



LIEBHERR

- ⊕ **Master 4** central computer for excavators.

Liebherr UPCR engine control system, System Display of the fuel system.

Deutz EMR2 - EDC engine control system, actuations of the output signals of the control unit.

POWERSCREEN

Caterpillar C-4.4 and **C-6.6** (on SAE J1939) engine control systems, actuations of the exhaust gas pressure regulator and the fuel pump relay.

Caterpillar C-7.1 (on SAE J1939) engine control system, exhaust and intake system check, maintenance for the ash cleaning regeneration and high-pressure pump calibration of the fuel system.

SANDVIK

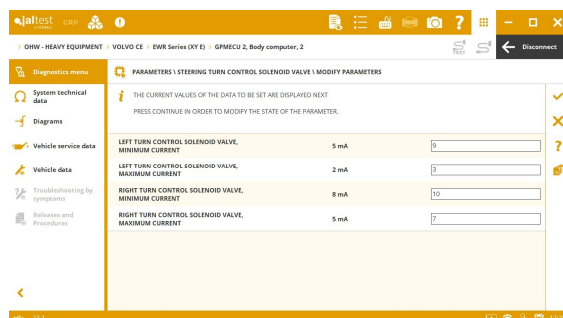
Perkins 904J (on SAE J1939) engine control system, maintenance for the recovery process of the exhaust gas aftertreatment system.

VOLVO CE

GPMECU 1 central computer for **L Series (XY H)** wheel loader, check of the quick hitch system.

GPMECU 2 central computer for **L Series (XY H)** wheel loader, configuration parameters of the steering system solenoid valves.

GPMECU 3 central computer for **L Series (XY H)** wheel loader, configuration parameters of the steering system joystick.



OHW - COMPACT EQUIPMENT

Take into account that this document is only a summary of the most relevant information of this new version. For further information, please visit Jaltest Report and coverage on Jaltest website where you can find the new maintenance developed in **COMPACT EQUIPMENT** for the recovery process of the exhaust gas aftertreatment system for the **Perkins 904J** engine of **WACKER NEUSON** and **WEIDEMANN**.

AHLMANN

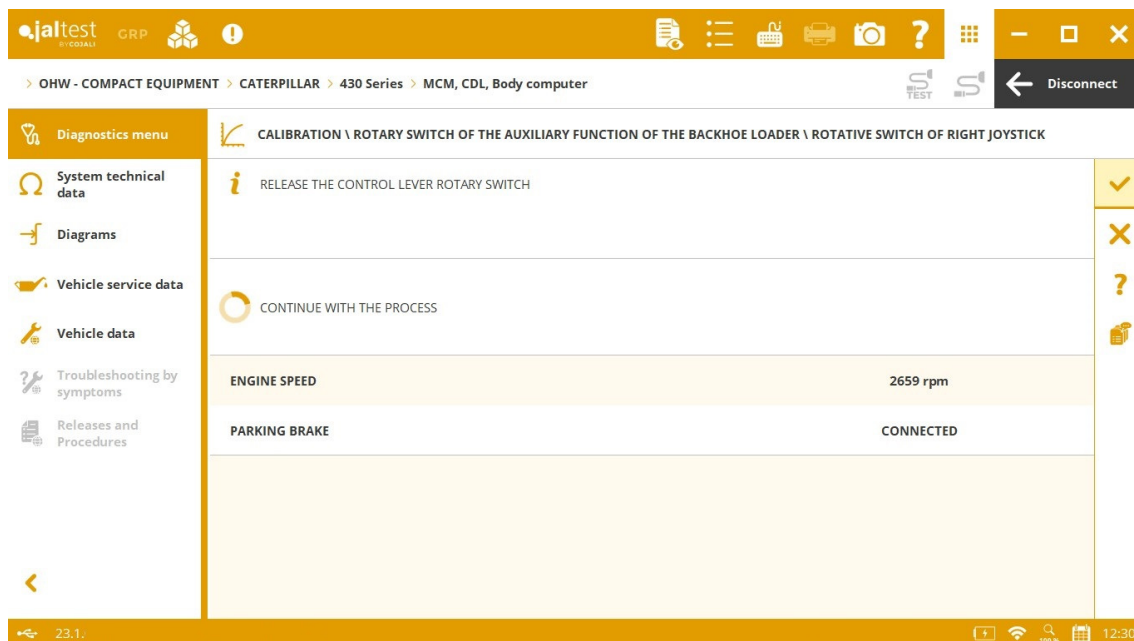
Deutz EMR4 ED17 CV52 engine control system, check of the AdBlue/DEF module cleaning.

CASE CE

New wiring diagram configurations in **SR 130 Series, SR 175 Series, SR 210 Series, SR 240 Series, SR 270 Series** and **221F** models.

CATERPILLAR

- ⊕ **C-2.2** (on SAE J1939) engine control system.
- ⊕ **MCM** (on CDL) central computer for **400 Series** backhoe loaders.



Caterpillar C-4.4 and **C-6.6** (on SAE J1939) engine control systems, actuations of the exhaust gas pressure regulator and the fuel pump relay.

DIECI

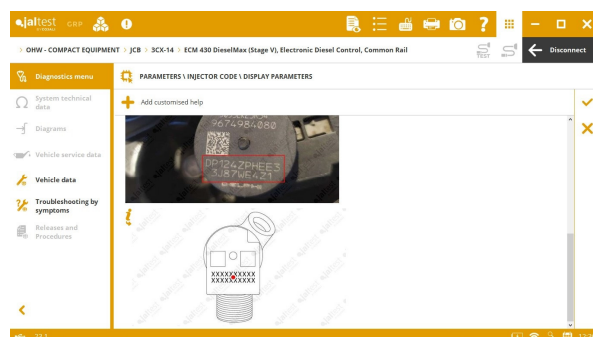
Perkins 904J (on SAE J1939) engine control system, maintenance for the recovery process of the exhaust gas aftertreatment system.

HITACHI

MC central computer system for **ZX – 5 Series** excavators, implement parameter configuration.

JCB

ECM 430 Diesel Max engine control system, injector coding.



JOHN DEERE CE

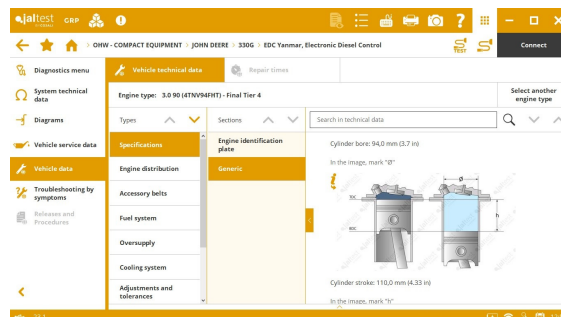
JSR system for skid-steer loaders, system measurement.

JSL system for skid-steer loaders, system measurements.

TCU transmission for wheel loaders, transmission calibration.

Equipment technical data and new engine types in **330G**, **331G**, **332G** and **333G** models of skid-steer loaders.

Troubleshooting guides for **Yanmar 4TNV94FHT** and **4TNV94CHT** engines.



STATIONARY ENGINE CATERPILLAR

Caterpillar C-3.6 (on SAE J1939) engine control system, maintenance for the recovery process of the exhaust gas aftertreatment system.

Caterpillar C-4.4 and **C-6.6** (on SAE J1939) engine control systems, actuations of the exhaust gas pressure regulator and the fuel pump relay.

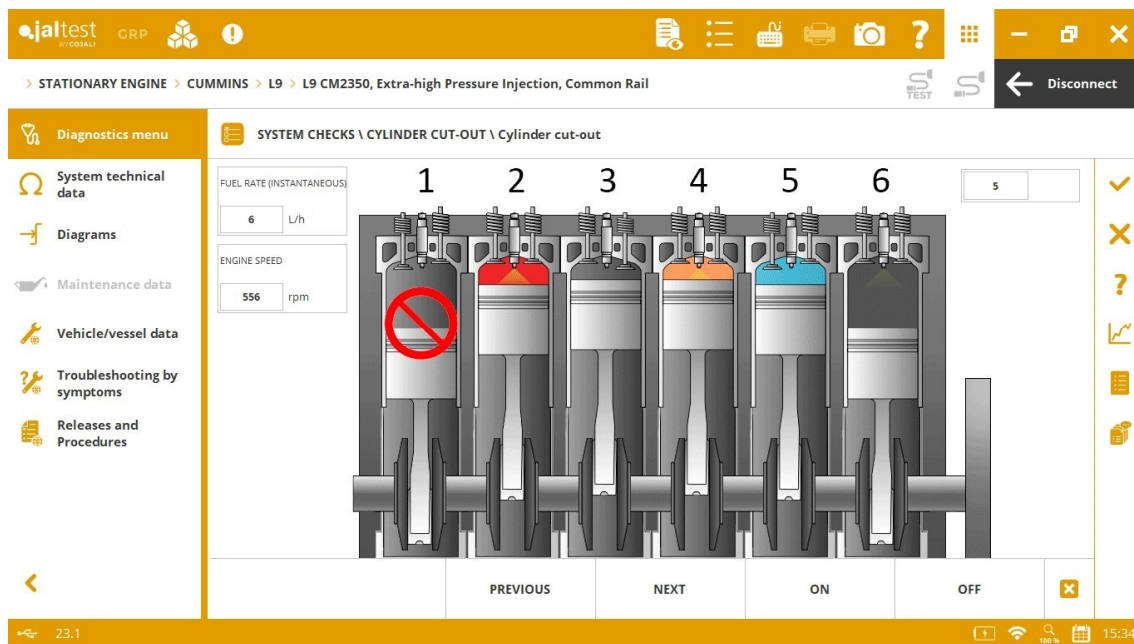
Caterpillar C-7.1 (on SAE J1939) engine control system, exhaust and intake system check, maintenance for the ash cleaning regeneration and high-pressure pump calibration of the fuel system.

CUMMINS

More than 500 references of **CUMMINS** systems have been included. In these systems, the display format of parameters has also been improved.

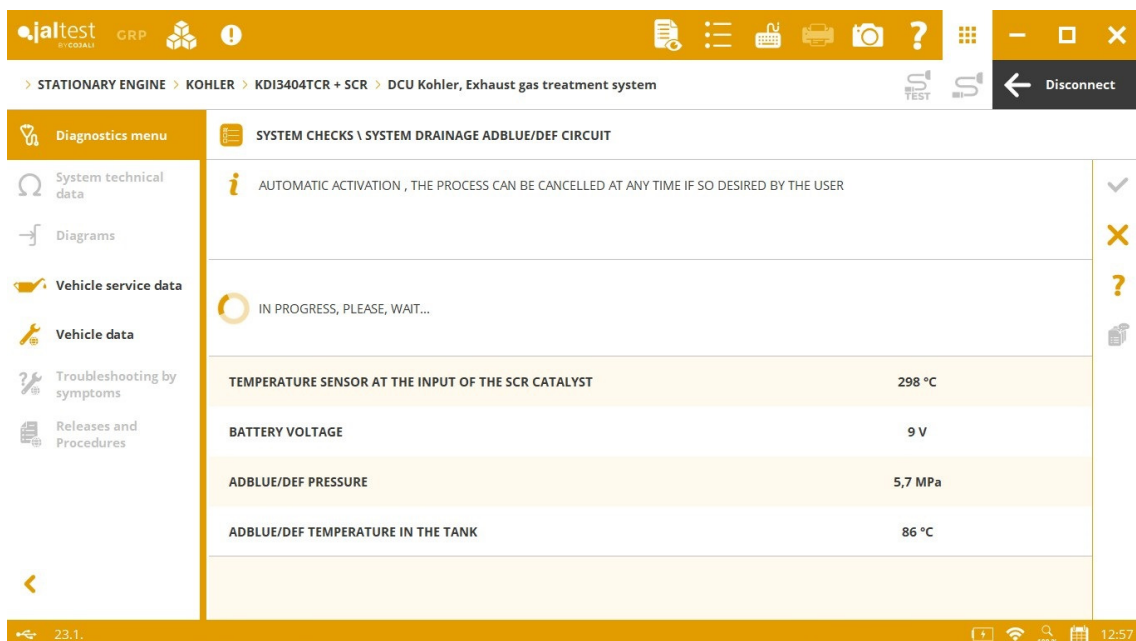
B4.5/6.7 CM2350, **QSB4.5/6.7 CM2350**, **QSF3.8 CM2350** and **L9 CM2350** engine control systems, among others. New advanced diagnostics functions such as the cylinder cut-out and the parameter configuration.

New equipment technical data, engine types, technical releases and procedures in **X15**, **X12**, **B4.5/6.7**, **L9** and **QSB6.7** engines, among others.



KOHLER

DCU exhaust gas aftertreatment system, actuation of the AdBlue/DEF system heating elements, return pump check, AdBlue/DEF injector check, AdBlue/DEF dosing check, AdBlue/DEF leakage control check, etc.



VM MOTORI

Stage IV/Euro 6 EDC R754/R756 engine control system, actuations, histograms and operation data.

MULTI-PURPOSE VEHICLE

Overall, extended diagnostics coverage for engine control systems. There are new functionalities in the **Deutz EMR4 ED17 CV52** system in the **SCARAB** brand, in the **JCB ECM 430 Diesel Max** system in the **BUCHER** brand and in the VM **EDC R754/R756** system for **Stage IV/Euro 6** engines in the **AEBI** brand.

