



## INNOVATIONS 23.1

# SOFTWARE INNOVATIONS

The new software version Jaltest 23.1 once again offers more improvements and innovations that consolidate this tool as a benchmark in multi-brand diagnostics for commercial vehicles, agricultural equipment, OHW equipment, material handling equipment and vessels.

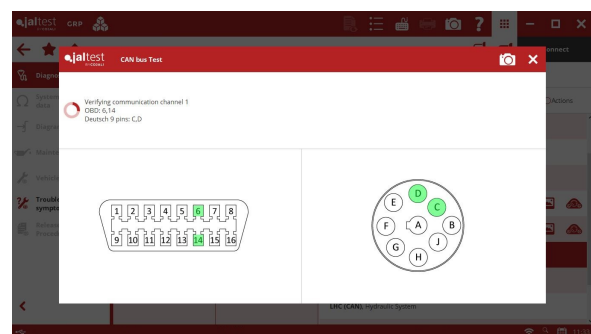
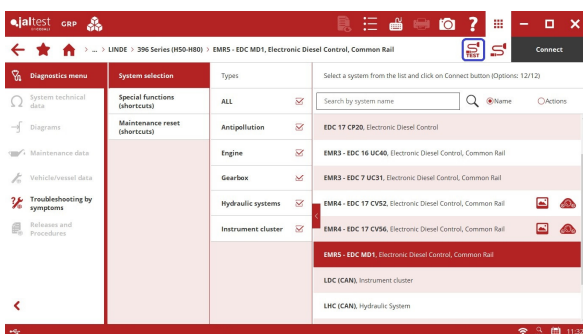
Overall, there are new improvements in the software usage, including:

- Ordering the measurement display by the user.
- Displaying the support information of a System Display in an action.
- Improved parameter confirmation with more limits, conditions and exceptions.

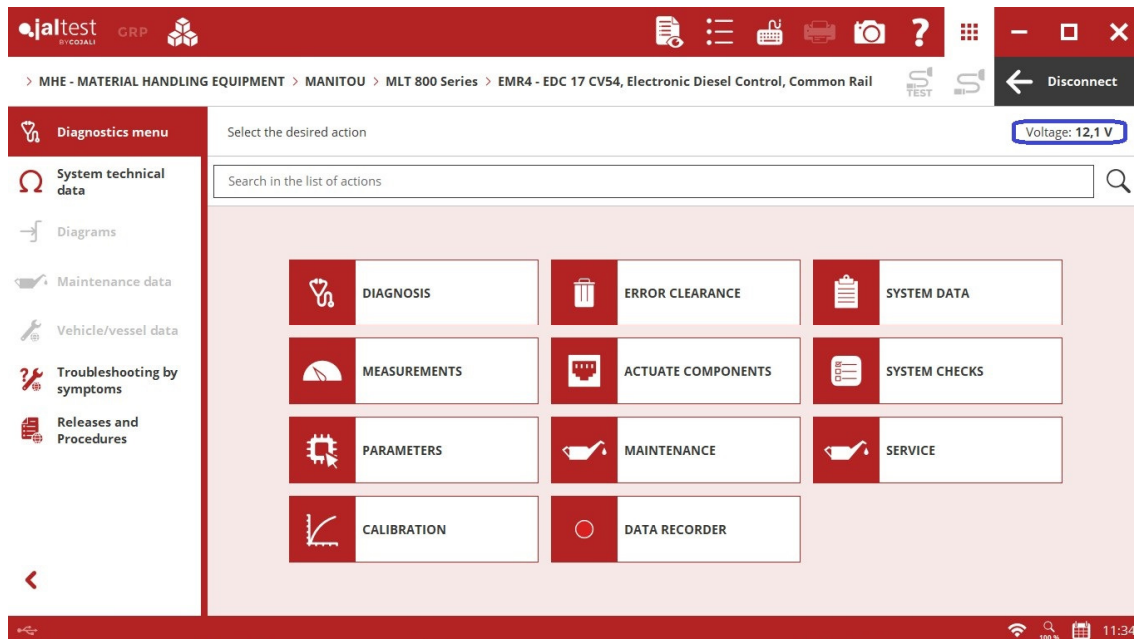
This version also enables the download of the **Jaltest University** training program from additional modules.

## Connection test and communication bus test

Shortcut to the connection test and the communication bus test of the vehicle, allowing to verify the power supply, as well as the connection and communication errors in the diagnostics connector of the vehicle. In addition, enhanced display of the communication bus test by indicating the pins of the OBD and 9-pin Deutsch connectors that are checked.



The supply voltage of the system is also displayed throughout the diagnostics session.

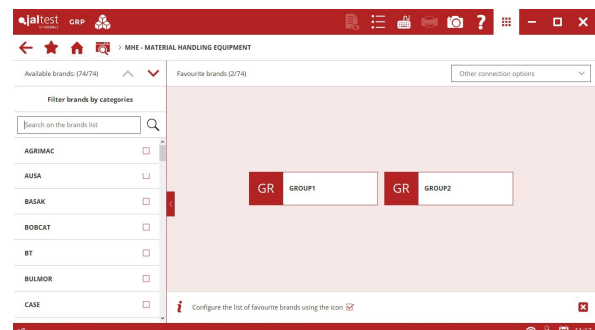
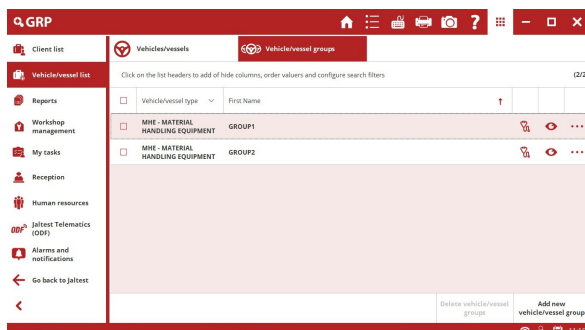


## GRP

Improved user experience in GRP thanks to the following innovations:

- Saving audios assigned to a report.
- Creating alarms from client lists, vehicles or reports.
- Improved management of report e-mail sending.
- GRP Analytics information by device in GRP Enterprise.

In addition, shortcuts to GRP vehicles can be created as favourites in brand forms. The management is performed from the vehicle list. This allows the user to create shortcuts to client fleets, vehicles, etc.

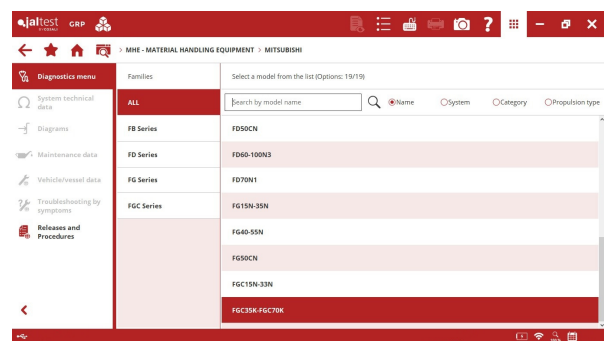
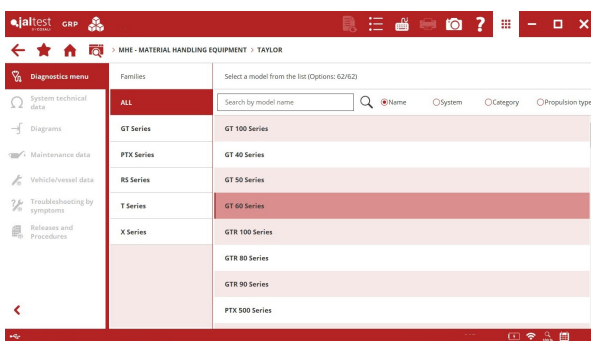


# BRANDS AND MODELS

Take into account that this document is only a summary of the most relevant information of this new version. For further information, please visit Jaltest Report.

Some of the brands in Jaltest are listed below: **TAYLOR**, **UNICARRIER** and **OM**.

In addition, the number of models in the following brands has increased: **CATERPILLAR** (DP and GP families), **JUNGHEINRICH** (TFG Series family), **HYSTER**, **LIEBHERR**, **MITSUBISHI**, **STILL** and **YALE** with new electric, diesel and LPG models.



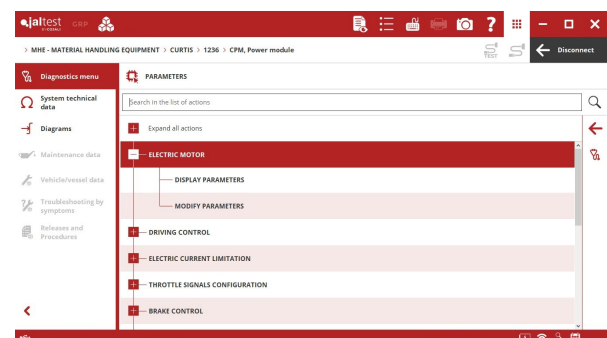
# DIAGNOSTICS AND SYSTEMS

## CATERPILLAR

- ⊕ **ECM** engine control system for internal combustion forklifts specific to gas engines.
- ⊕ **VCMIM** central computer for internal combustion forklifts specific to diesel and gas engines.

## CURTIS

**CPM** power module for **1232**, **1234**, **1236** and **1238** power modules, modifications of the driving parameters, the accelerator type, the electric motor configuration, etc.

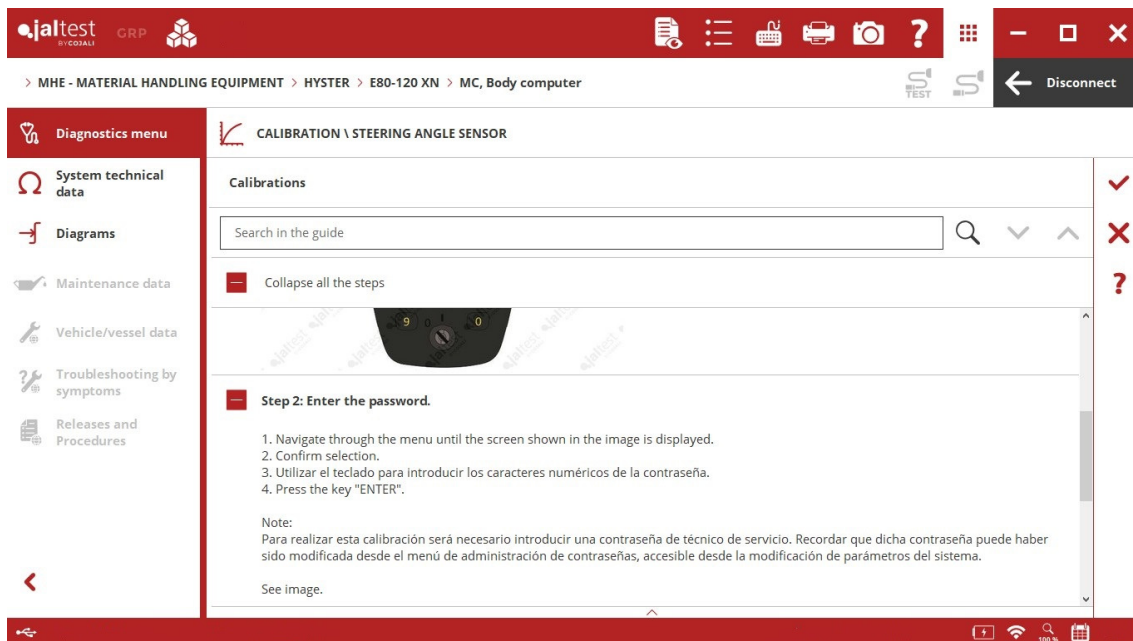


## GENIE

Manual procedure to carry out the AdBlue/DEF module cleaning in the **EMR4 EDC 17 CV52** (Deutz) engine system.

## HYSTER

Procedure of calibrations of the steering angle sensor, the centred steering position, the spool valve replacement through the **MC** system for electric forklifts.

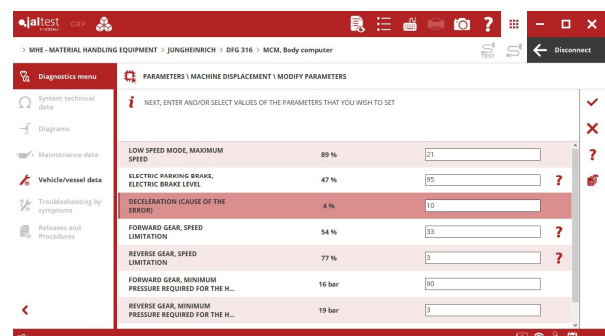


## JCB

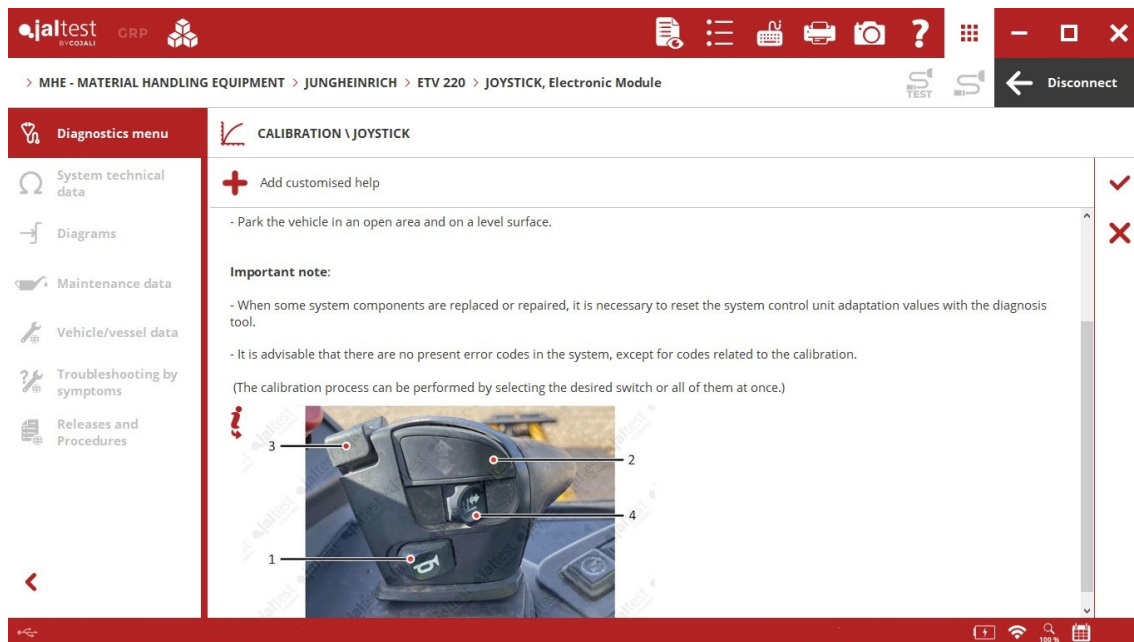
New advanced action for the injector configuration in the **ECM 430 Diesel Max** system.

## JUNGHEINRICH

⊕ **MCM** central computer for **DFG 320 Series** and **TFG 435** models, modifications of the equipment parameters and the hydraulic system parameters, calibration of the accelerator pedal, etc.

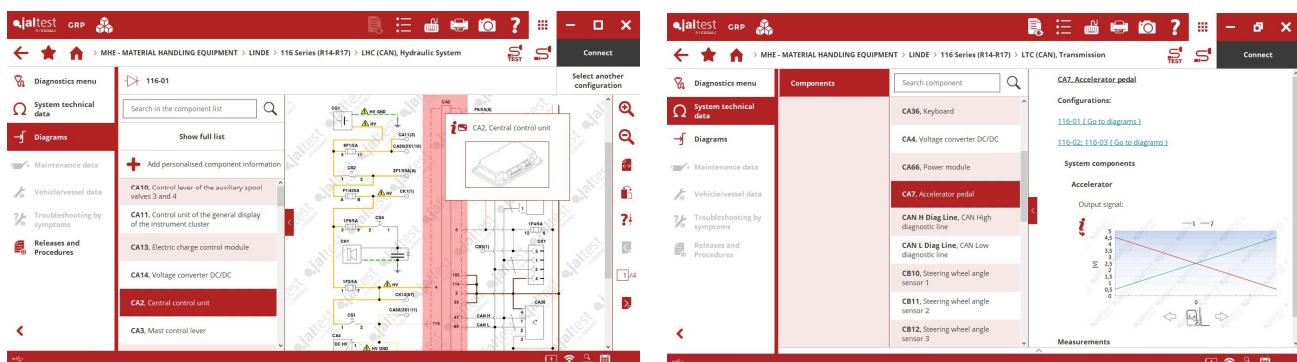


⊕ **JOYSTICK** system for retractable forklifts of the **ETV** and **ETM series** with joystick calibration, among other actions.



## LINDE

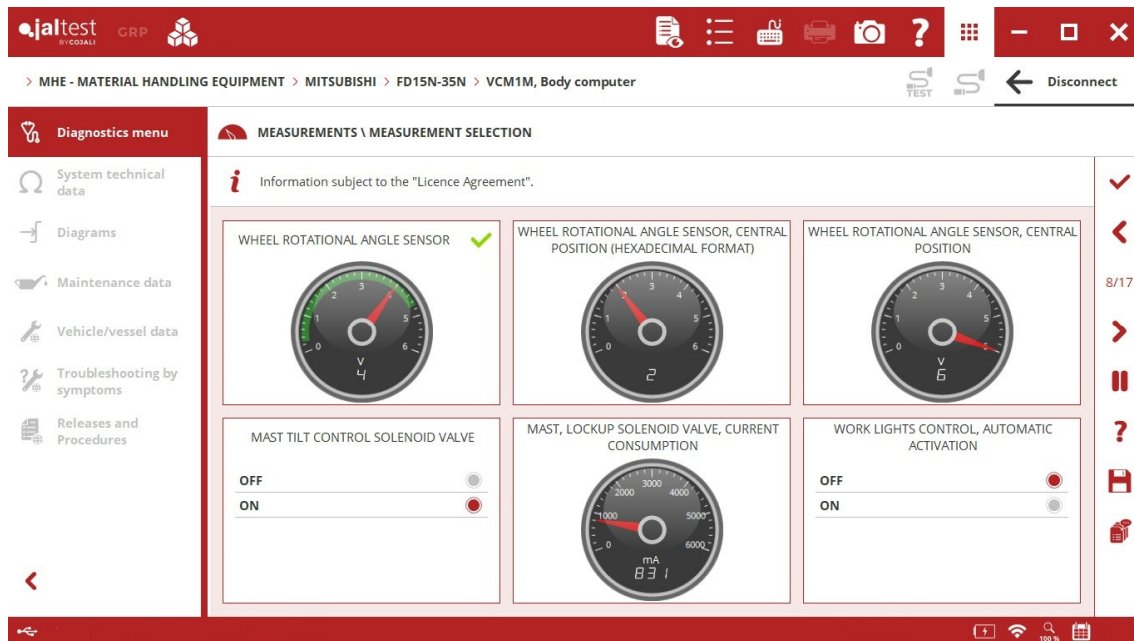
New wiring diagram configurations have been created of the **LHC** hydraulic system, the **LTC** machine traction system and the **LAC** power modules for **R series** models.



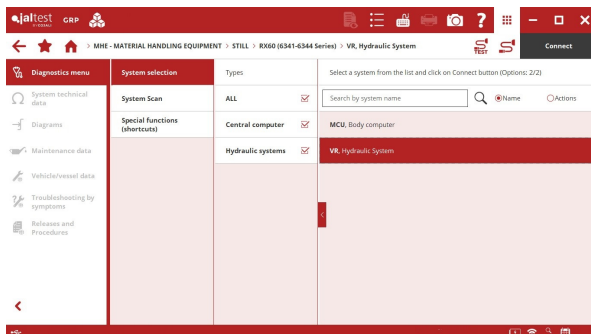
In addition, there are new wiring diagram configurations for **E series** forklifts for **336** models for the **LHC** (k line) hydraulic system and the **LTC** (k line) machine traction system.

## MITSUBISHI

- ⊕ **ECM** engine control system for internal combustion forklifts specific to gas engines.
- ⊕ **VCM1M** central computer and **MP** instrument cluster for internal combustion forklifts specific to diesel and gas engines.

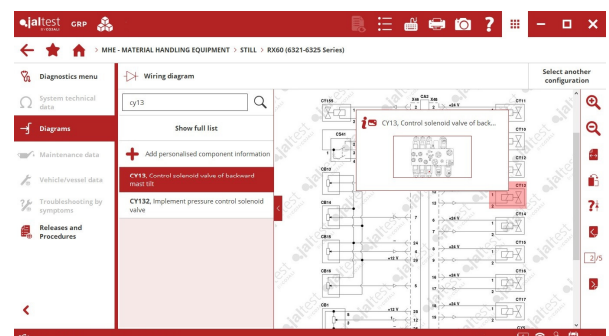


## STILL



- ⊕ **VR** hydraulic system for first-generation **Rx20** and **Rx60** electric forklifts.

In addition, new wiring diagram configurations of the **MCU** central computer in first and second-generation **Rx20** and **Rx60** electric forklifts.





## YALE

⊕ **VECU** central computer for internal combustion forklifts for **GDP 20 MX** or **GDP 60 MX** models.

New procedures of calibrations have also been created for the replacements of the steering angle sensor, the position sensor of the accelerator pedal or the main shift valve through the **VSM** system for electric forklifts.

