



## INNOVATIONS 23.1

# SOFTWARE INNOVATIONS

The new software version Jaltest 23.1 once again offers more improvements and innovations that consolidate this tool as a benchmark in multi-brand diagnostics for commercial vehicles, agricultural equipment, OHW equipment, material handling equipment and vessels.

Overall, some improvements in the software usage have been added, including:

- Ordering the measurement display by the user.
- Displaying the support information of a System Display in an action.
- Improved parameter confirmation with more limits, conditions and exceptions.

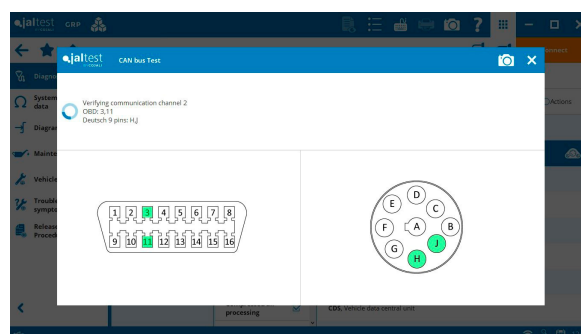
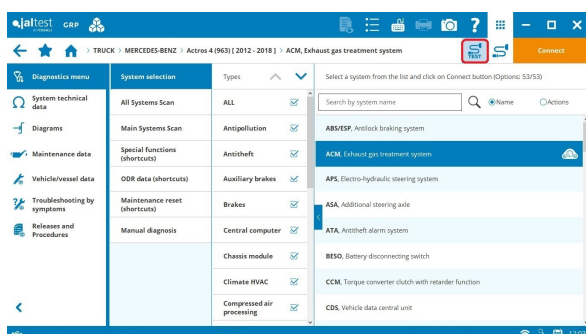
The additional module OEM|RP1210 module has also been added. Through the module OEM|RP1210 it is possible to configure and execute diagnostics tools of manufacturers that have been designed according to the standardised communication method RP1210, which defines good practices established by the TMC organisation with the aim of using communication devices compatible with this standard, such as Jaltest Link.



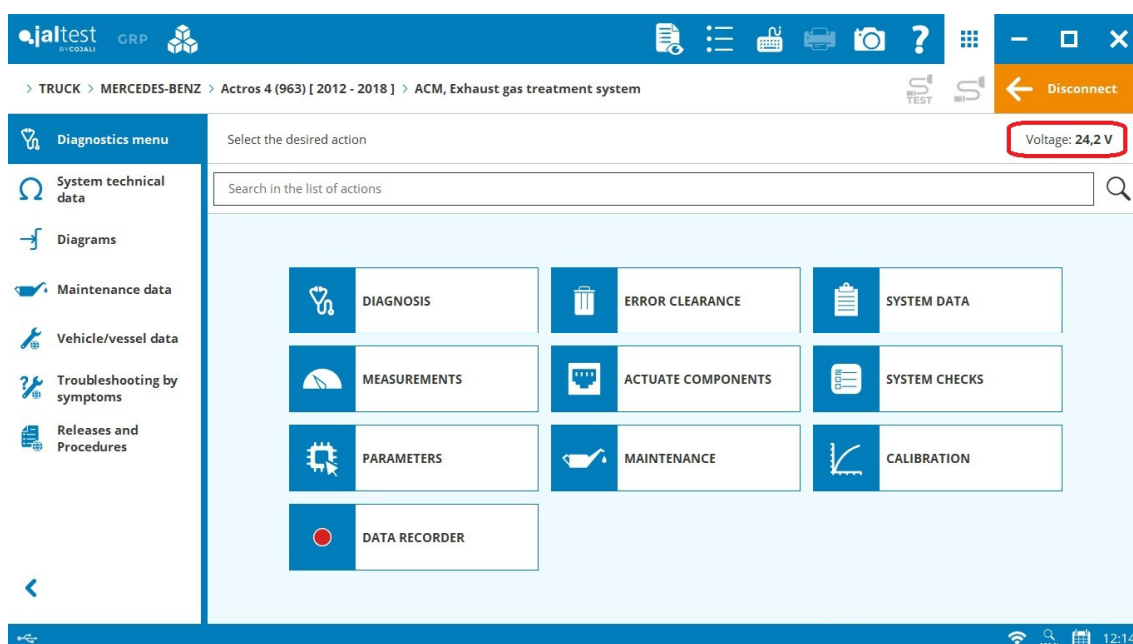
This version also enables the download of the **Jaltest University** training program from additional modules.

## Connection test and communication bus test

Shortcut to the connection test and the communication bus test of the vehicle, allowing to verify the power supply, as well as the connection and communication errors in the diagnostics connector of the vehicle. In addition, enhanced display of the communication bus test by indicating the pins of the OBD and 9-pin Deutsch connectors that are checked.



The supply voltage of the system is also displayed throughout the diagnostics session.



## System scan displayed in CAN diagrams

Display of the system scan in CAN diagrams for some of the most important models in the market. The functionality coverage will continue to increase in future versions.

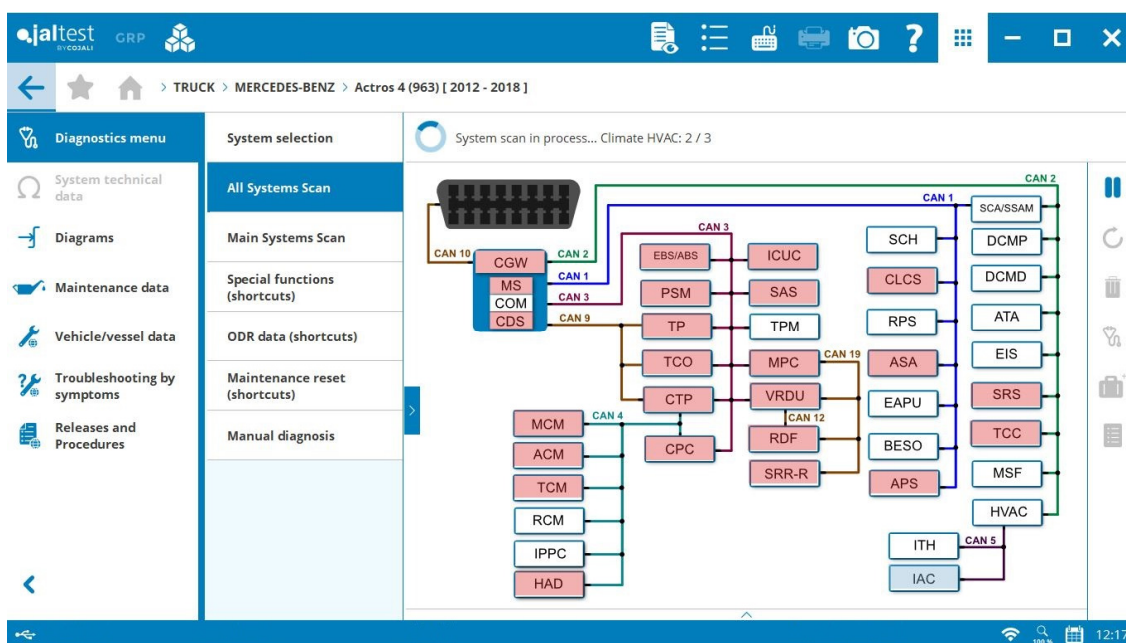
DAF XF E6 (F7/BH Series) [2017 - ...]

SCANIA New R 770 Series

MERCEDES-BENZ Actros 4/5 (963)

IVECO Stralis XP/Hi-Way/Hi-Road/Hi-Street Euro 6

IVECO S-Way & W-Way  
TGX (TG1/TG2/TG3 Series)  
X-Way

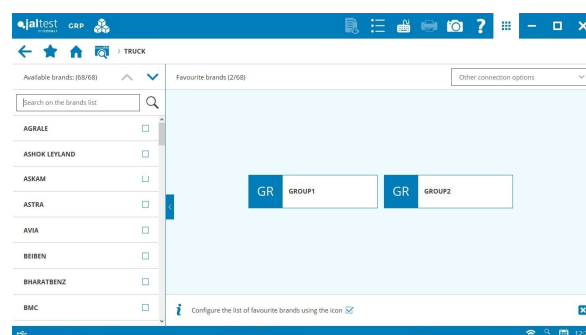
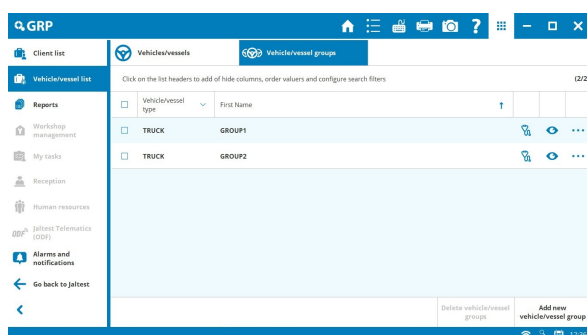


## GRP

Improved user experience in GRP thanks to the following innovations:

- Saving audios assigned to a report.
- Creating alarms from client lists, vehicles or reports.
- Improved management of report e-mail sending.
- GRP Analytics information by device in GRP Enterprise.

In addition, shortcuts to GRP vehicles can be created as favourites in brand forms. The management is performed from the vehicle list. This allows the user to create shortcuts to client fleets, vehicles, etc.



# BRANDS AND MODELS

---

Take into account that this document is only a summary of the most relevant information of this new version. For further information, please visit Jaltest Report.

Some of the new models and brands of this version are listed below.

## FIAT

Doblo 1.3 Cargo/eDoblo [2021 - ...]

Scudo/eScudo [2021 - ...]

## IVECO

Daily MY2021

## LDV/MAXUS

EV90 eDeliver9

EV30 eDeliver3

## MERCEDES-BENZ

CITARO HYBRID (WEB628), engine: OM 936 h (VI)

CITARO NGT (CNG) HYBRID (WEB628), engine: M936G (VI)

# DIAGNOSTICS AND SYSTEMS

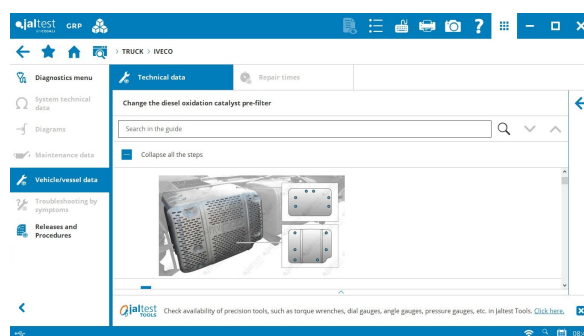
---

Take into account that this document is only a summary of the most relevant information of this new version. For further information, please visit Jaltest Report.

Overall, there are new technical information and troubleshooting guides (now **SMART guides**) by symptoms and of the most common fault codes in the workshop thanks to the communication channels with clients such as the technical support offered by the project, training, Jaltest Feedback and “Product improvement” option.

This version includes new procedures in which the use of special tools from Jaltest Tools is essential, such as the use of the reference **50105192 – TOOL TO REMOVE THE INJECTOR SLEEVE** for **VOLVO D7E/F** engines or the reference **50105184 – TOOL TO POSITION THE DISTRIBUTION SHAFT** for **IVECO** engines, among others.

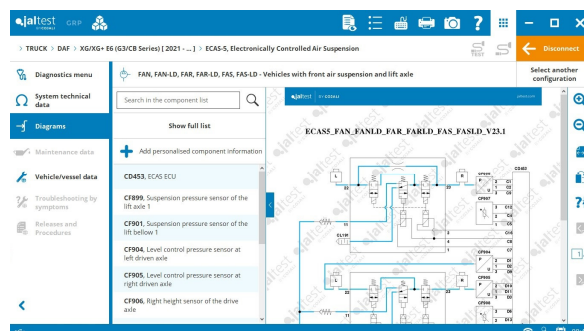
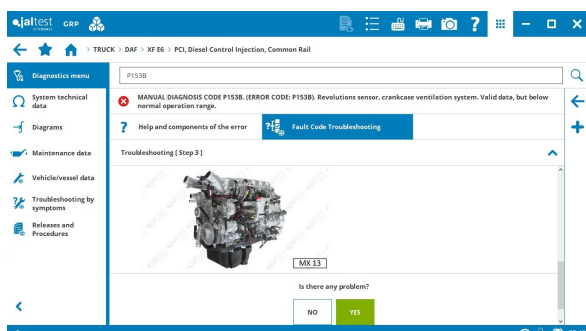
New procedures have been added in all major brands, such as “*Change the Diesel Oxidation Catalyst pre-filter*” in **IVECO FE611** engines, new model technical data and maintenance services in the latest models, for example, models with **MB5 technology** in **MERCEDES-BENZ**.



## TRUCK

### DAF

As a new innovation, **SMART** guides associated to fault codes in the **PCI on KWP2000** engine control system. It is worth noting the guides associated to the **P153B** and **P3101** fault codes. In addition, technical data and wiring diagram configurations have been included in several brand systems. For example, new operating diagrams of the **ECAS-5** suspension system have been included in **XF, XG/XG+** and **XD Euro 6 CB Series** models.



**PCI-2** engine control system, operation data, reset of the rail pressure control valve and checks such as the compression test, the NOx sensor check or the AdBlue/DEF dosing, among others.

**VECU-2** vehicle control unit, activations of the external lights, the windscreen wiper and the acoustic alarm of the reverse gear.

⊕ **Airbag-3** in **Euro 6** models.

⊕ **CDM** passenger door module in **XF, XG/XG+** and **XD Euro 6 CB Series** models.

**CMR** chassis control module, rear light activation.

**ACH-WW** auxiliary heater, performance test of the fuel pump.

## IVECO

⊕ **Hi-Traction** hydrostatic front traction system in **X-Way** models.

New measurements of the **ASM** suspension system in **S-Way** models in which the control of variants and functions for the **EDC MD1 + Denox 6-HD** engine control system has also been improved. In addition, this system includes the System Display.

## FORD

**EDC 17 Ecotorq** engine control system, system checks, maintenance services and injector coding in **F-MAX Euro 6** models.

## HINO

⊕ **Traxon** transmission in **700 Series** models.

⊕ **DDS ADAS** driver assistance service, **ES Start** hill start assist system and **HID/AHL** light unit in **500 Series** models.

## MAN

**CVM2** central computer, component activation, vehicle speed limit configuration and clutch calibration for manual gearboxes.

**EDC MD1 + Denox 6-HD** engine control system, new system activations.

## MERCEDES-BENZ

In vehicles with **MB4/MB5 technology**:

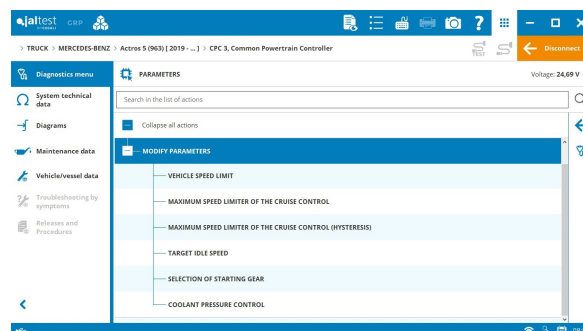
**CPC3** common powertrain controller, configuration of the coolant pressure control.

**CPC5** common powertrain controller, clutch calibration for manual gearboxes.

**MCM** engine control system, low-pressure fuel circuit check.

In **Unimog** vehicles:

Control unit for **STCU** special vehicles, parameter configuration.

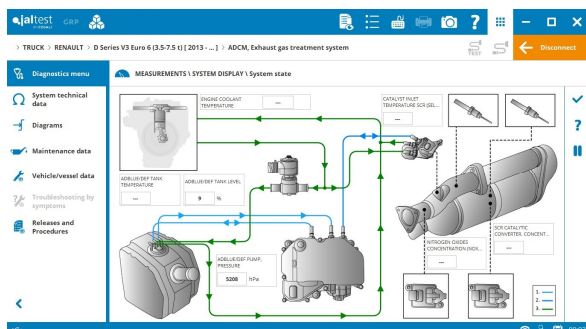




## RENAULT

In vehicles with **V3 technology**:

**EMS DTI** engine control system, activation and check of the Exhaust Gas Recirculation valve.



In vehicles with **V4 technology**:

**ADCM** exhaust gas aftertreatment system, activations of the AdBlue/DEF tank heater, the AdBlue/DEF flow direction inverter valve and the AdBlue/DEF injector, among others.

**CCM** climate control, fuel dosing test and auxiliary heater unlocking.

## SCANIA

**SMART** guides associated to the 135 fault code of the **EMS XPI** engine control system "Too low accumulator fuel pressure".

⊕ **SC4** tachograph.

**ICL** instrument cluster, configuration parameters of the warning signals.

**APS** and **APS2** compressed air processing and generation systems, operation data.

## VOLVO

In vehicles with **V3 technology**:

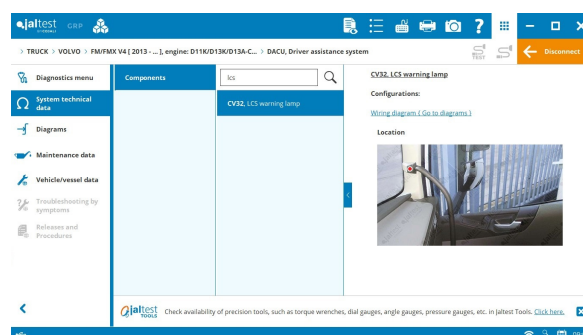
⊕ **FAS** electrohydraulic steering system.

**VECUS** vehicle control system, reset of the compressor and the compressed air dryer, parameter configuration of the power take-off and the cruise control, etc.

In vehicles with **V4 technology**:

**CCIOM** chassis central module, enable/disable the fifth-wheel sensor.

**DACU ADAS** system of driver assistance, activation of the Lane Change Assistant.





## BUS

**EDC 17 CV41 FTP** engine control system that applies to several bus brands, System Display of the exhaust gas system and the exhaust gas aftertreatment system. In addition, the System Display has been used in the Diesel Particulate Filter regeneration.

### BYD

**ELDM** electric leakage detection module, system activations.

### IRIZAR

**VSE ETS** steering control unit, new measurements.

### MAN

⊕ **EGC4 E18** gas engine control system in **Euro 6** buses.

### MERCEDES-BENZ

⊕ **EMGW**, **MHS** and **MHM** hybrid bus control systems.

⊕ **EHPS** electrohydraulic steering in **Euro 6** buses.

**CGW** central computer, telematic service parameters.

### SCANIA

In hybrid models:

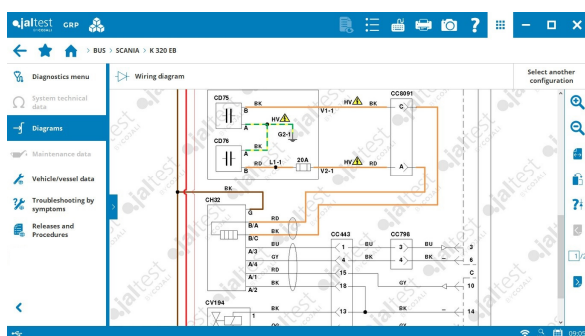


Diagram configurations.

Master unit of the **BMU6** drive-battery management system in hybrid buses, measurement development and other advanced system functions.

**IBU2**, hybrid battery management system, system measurements.

In CNG models:

**CNG/LNG Euro 6 EMS EMOI** engine control system, operation data of the operating time of the starter motor.

**CNG Euro 6 EMS OCSI** engine control system, new measurements.

### VAN HOOL

New wiring diagrams available in the brand.

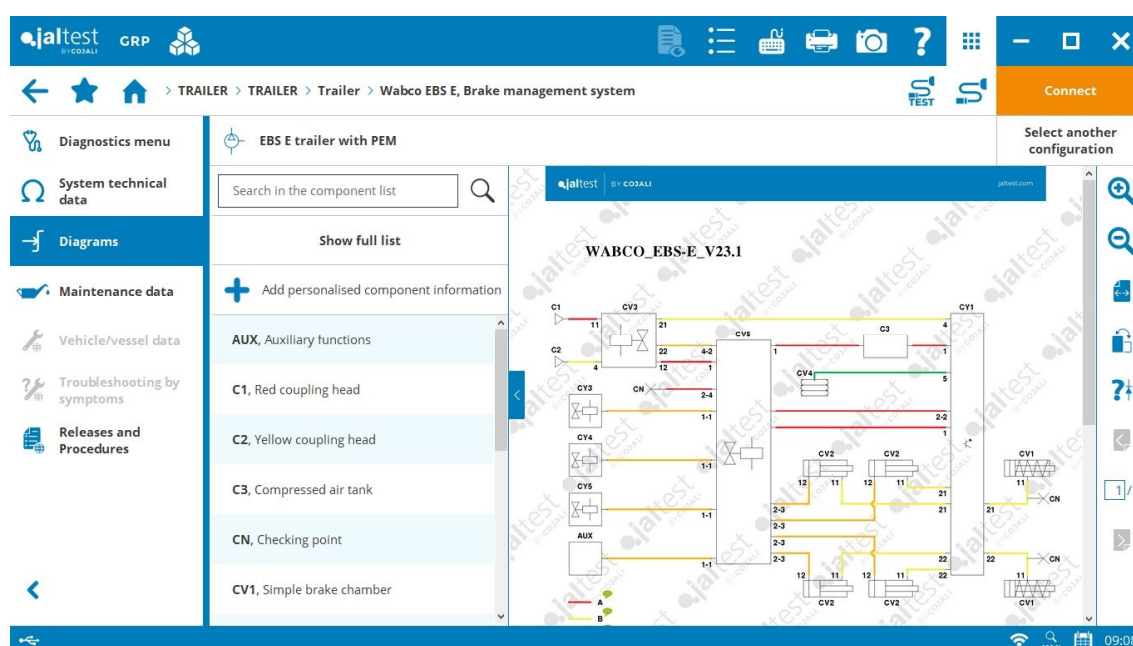
## VOLVO

In vehicles with **V2 technology**:

**VCU2** vehicle control unit, fan activation.

## TRAILER

This version, there are new operating diagrams of Trailer ABS and Trailer EBS systems available in all brands.



## THERMO KING

Fuse and relay box in **Smart Reefer 2** and **Smart Reefer 3** systems.

## LIGHT COMMERCIAL VEHICLE

### FIAT

⊕ **ABS, BCM, EPS**, etc. systems in the **Ducato MCA** model with SGW.

⊕ **MD1C5069** engine control system in the **Ducato MCA [290]** model.

### IVECO

**DCU** exhaust gas aftertreatment system in the **Daily MY.2019** model, component replacement such as the AdBlue/DEF pump.

**ICT TFT** instrument cluster in the **Daily MY.2019** model, activations.

**BMS ABS9/ASR9/ESP9** brake system in **Daily MY.2014** and subsequent models, EPB actuator activations.

## ISUZU

⊕ **6NX1-TC Euro 6** engine control system in **C/E** and **GIGA Series** models.

## MERCEDES-BENZ

**SCR Gen 4** exhaust gas aftertreatment system, activations of the heating elements and the AdBlue/DEF dosing valve, reset of the system warning message, etc.

**VGS NAG3 (9G-Tronic)** transmission, advanced functions such as the torque converter activation, the roller bench test, the service reset, among others.

## PSA GROUP

**eVCU** electric vehicle control unit, activations and component replacement.

Model wiring diagrams in **Jumpy/Expert [K0]** vehicles with diesel engines.

## VOLKSWAGEN

Model wiring diagrams in **T6.1**, **eCrafter** and **Crafter Euro 6d** vehicles.

