



INNOVATIONS 23.1

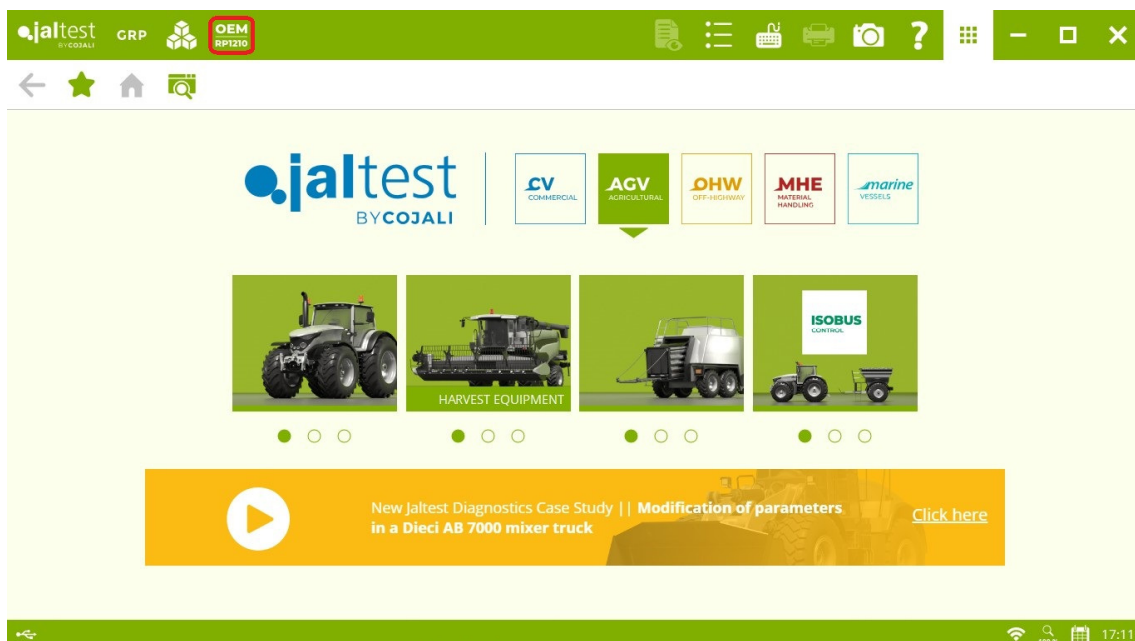
SOFTWARE INNOVATIONS

The new software version Jaltest 23.1 once again offers more improvements and innovations that consolidate this tool as a benchmark in multi-brand diagnostics for commercial vehicles, agricultural equipment, OHW equipment, material handling equipment and vessels.

Overall, there are new improvements in the software usage, including:

- Ordering the measurement display by the user.
- Displaying the support information of a System Display in an action.
- Improved parameter confirmation with more limits, conditions and exceptions.

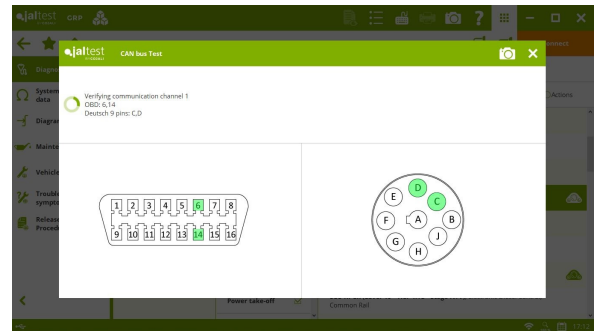
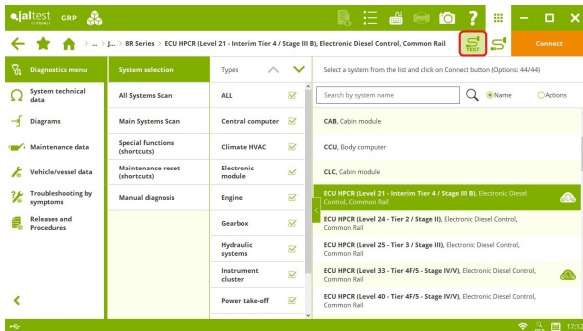
The additional module OEM|RP1210 module has also been added. Through the module OEM|RP1210 it is possible to configure and execute diagnostics tools of manufacturers that have been designed according to the standardised communication method RP1210, which defines good practices established by the TMC organisation with the aim of using communication devices compatible with this standard, such as Jaltest Link.



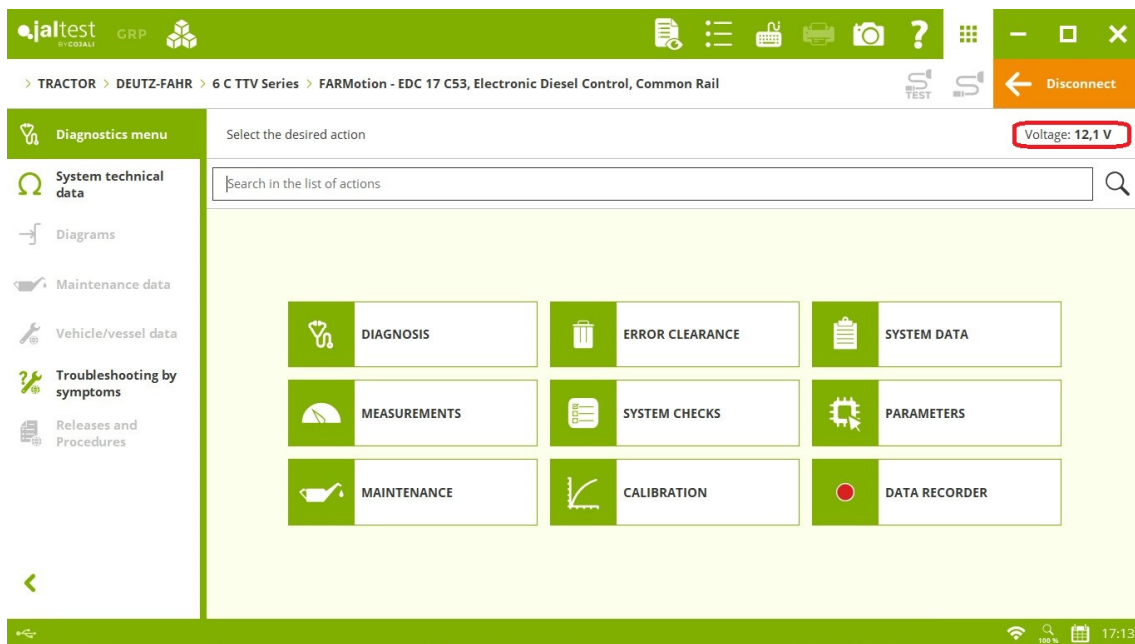
This version also enables the download of the **Jaltest University** training program from additional modules.

Connection test and communication bus test

Shortcut to the connection test and the communication bus test of the vehicle, allowing to verify the power supply, as well as the connection and communication errors in the diagnostics connector of the vehicle. In addition, enhanced display of the communication bus test by indicating the pins of the OBD and 9-pin Deutsch connectors that are checked.



The supply voltage of the system is also displayed throughout the diagnostics session.

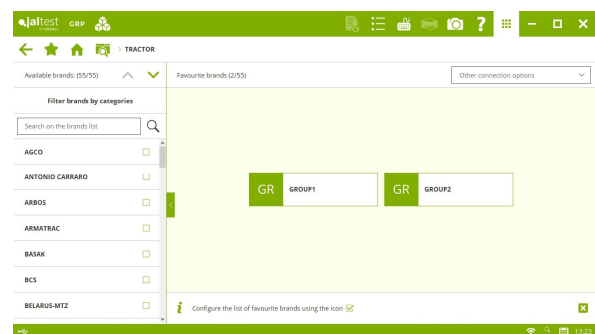
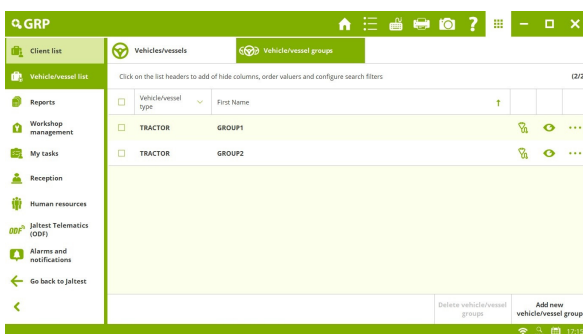


GRP

Improved user experience in GRP thanks to the following innovations:

- Saving audios assigned to a report.
- Creating alarms from client lists, vehicles or reports.
- Improved management of report e-mail sending.
- GRP Analytics information by device in GRP Enterprise.

In addition, shortcuts to GRP vehicles can be created as favourites in brand forms. The management is performed from the vehicle list. This allows the user to create shortcuts to client fleets, vehicles, etc.



BRANDS AND MODELS

Take into account that this document is only a summary of the most relevant information of this new version. For further information, please visit Jaltest Report.

Some of the new models and brands in Jaltest are listed below.

TRACTOR

ARBOS

4090E, engine: Interim Tier 4/Stage IIIB

7220, engine: Tier 5/Stage IV

7260, engine: Tier 5/Stage IV

CASE IH

Steiger AFS Series – CVT, engine: Tier 5/Stage V

DEUTZ-FAHR

Agrokid 210/220/230

Agroplus F Keyline

5 DV/DS/DF TTV Series

5 G TB Series

5 Series

KUBOTA

LX Series

MASSEY FERGUSON

3300 F Series

4200 Series

6700 R Series

VALTRA

A 800 R

A 990 R

A 63F

A 144 HiTech

HARVEST EQUIPMENT

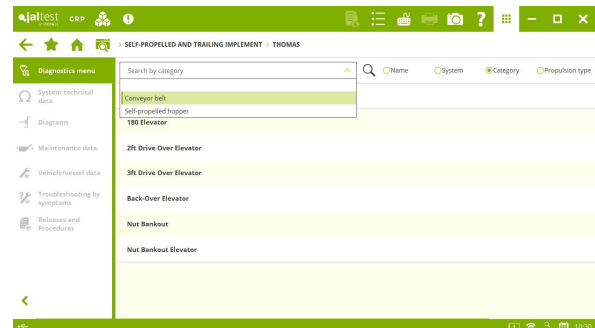
In this version, **BOURGOIN**, **OMC** and **OXBO** brands have been included.

CLAAS

Jaguar Series (502) forage harvester.

SELF-PROPELLED AND TRAILING IMPLEMENT

This version includes **FLORY** (Self-propelled implements), **JACOBSEN** (Professional mowers) and **THOMAS** (Conveyor belts) brands.



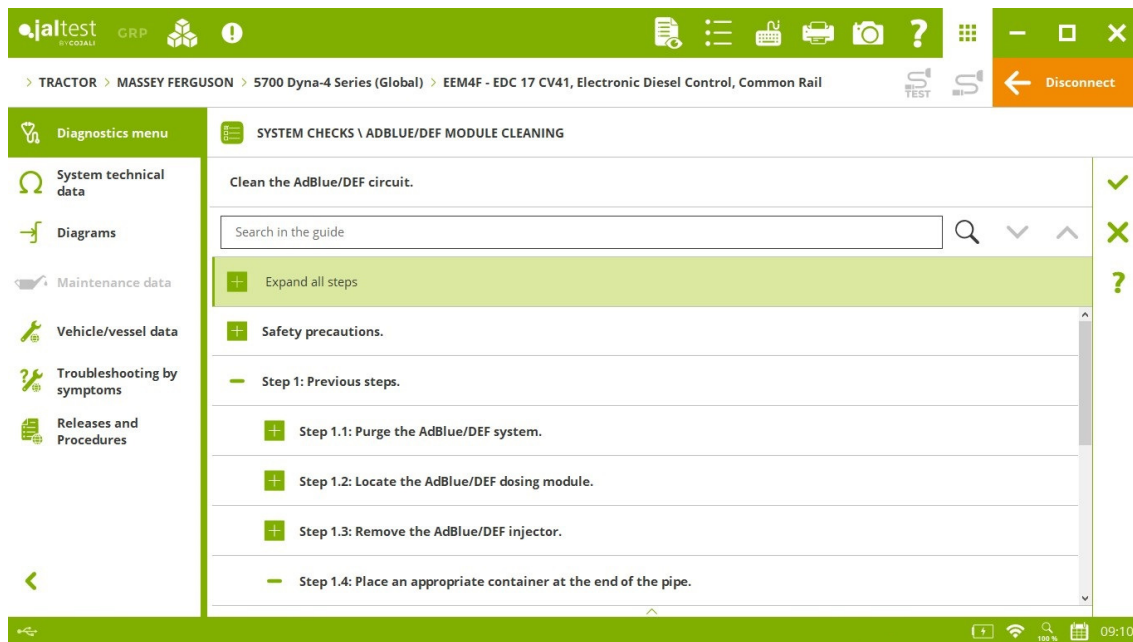
DIAGNOSTICS AND SYSTEMS

Take into account that this document is only a summary of the most relevant information of this new version. For further information, please visit Jaltest Report.

Overall, there are new technical information and troubleshooting guides (now **SMART guides**) by symptoms and of the most common fault codes in the workshop thanks to the communication channels with clients such as the technical support offered by the project, training, Jaltest Feedback and “Product improvement” option.

New maintenance of AdBlue/DEF module cleaning in **Deutz EMR4 – EDC 17CV52, EMR5 – EDC MD1, Sisu EEM4F – EDC 17 CV41** and **FPT EDC 17 CV41 + Denox 2.2** engine control systems.

The **MVCU** maintenance control system, of brands such as CLAAS, DEUTZ-FAHR, HÜRLIMANN, LAMBORHINI and SAME, extends its coverage with advanced functions such as the calibration of the hydrostatic unit or the slope sensor.

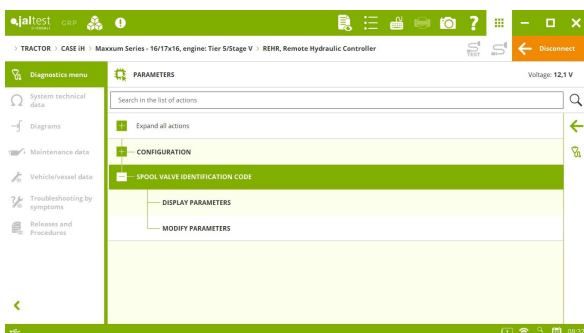


TRACTOR

ARBOS

DCU exhaust gas aftertreatment system in **Kohler** engines, advanced system functions.

CASE iH



REHR spool valve control system, spool valve coding for Tier 5/Stage V models.

TCM transmission system, system parameter configuration.

Troubleshooting guides by fault code in several brand systems.

CHALLENGER

- ⊕ New **Chassis Controller – Hitch** hydraulic lift system.
- ⊕ **Auxiliar Husco Valves** auxiliary hydraulic system.
- ⊕ **MCM** central computer.

C-18, J1939 engine control system, ash cleaning regeneration.

CLAAS

MVCU maintenance control system, checks of the forward and reverse clutches and the main clutch.

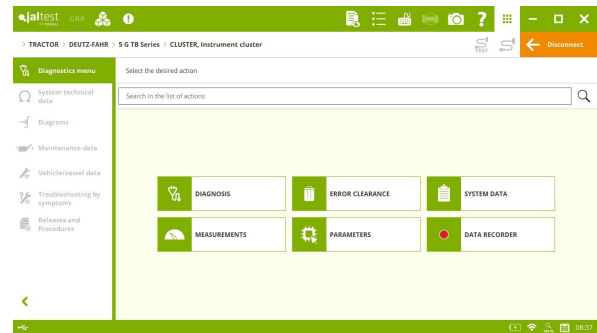
EMR2 – EDC engine control system, signal activation.

ACM anti-pollution system, activation of the AdBlue/DEF system heaters.

DEUTZ-FAHR

⊕ **CLUSTER** instrument cluster.

EMR4 – EDC 17 CV56 engine control system, AdBlue/DEF system checks.



FENDT

EOL 7 vehicle configuration control system in **400 Vario Series, engine: Tier 3/Stage III A** and **700 Vario Series, engine: Tier 2/Stage II** models.

New wiring diagram configurations of **Sisu** engine control systems in **900 Vario MT Series Final Tier 4/Stage IV** and **1100 MT Series Final Tier 4/Stage IV** models.

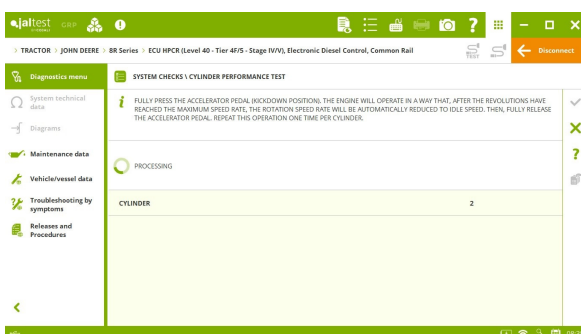
EEM4F – EDC 17 CV41 Master/Slave engine control system, component activation.

HÜRLIMANN

MVCU maintenance control system in **XS/XV Series** and **XF Series** models.

JOHN DEERE

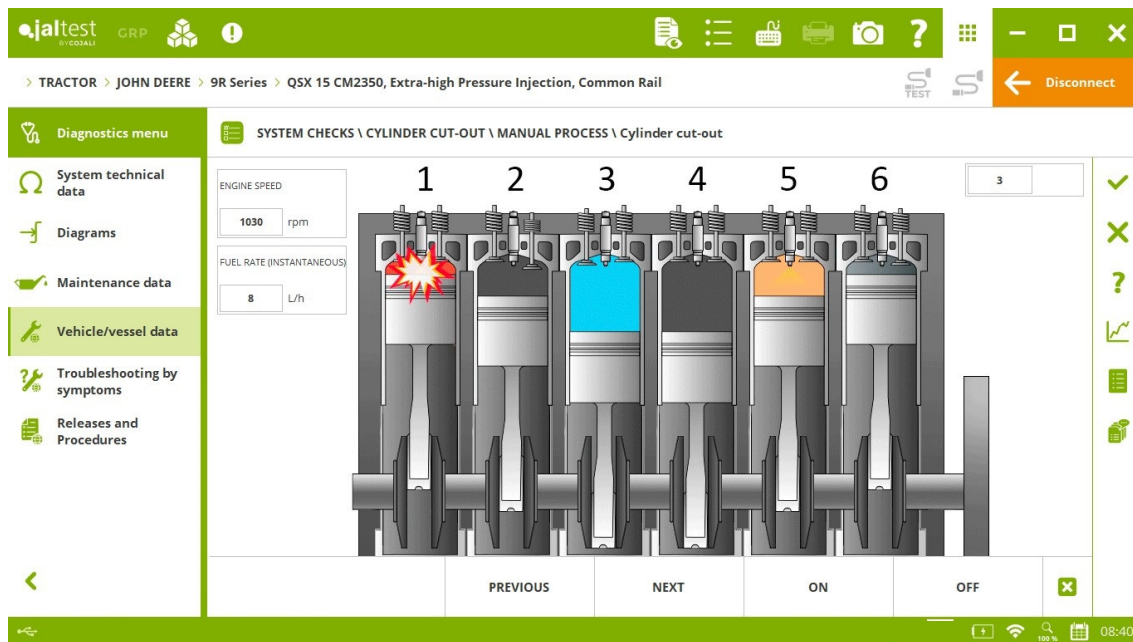
⊕ **TIQ** transmission system.



ECU HPCR (Level 40 – Tier 4F/5 – Stage IV/V) engine control system, cylinder cut-out, compression test and cylinder performance test.

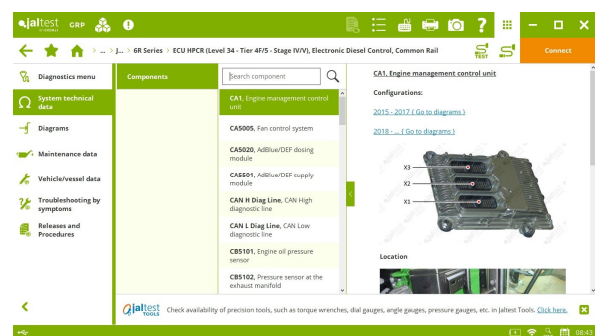
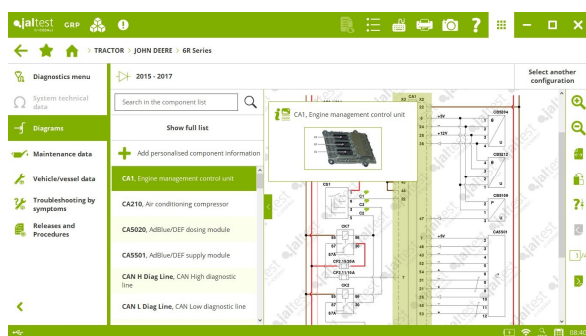
PTR transmission system, system parameter configuration.

Dynamic System Display in the **QSX 15 CM2350** engine control system.



Troubleshooting guides by fault code in several brand systems.

In addition, technical data, wiring diagram configurations and component location images have been included in several systems of the brand.



MASSEY FERGUSON

⊕ **EEM4 – EDC 17 C63** engine control system.

MFA armrest control system, joystick calibration.

NEW HOLLAND

ADIC instrument cluster, system parameter configuration.

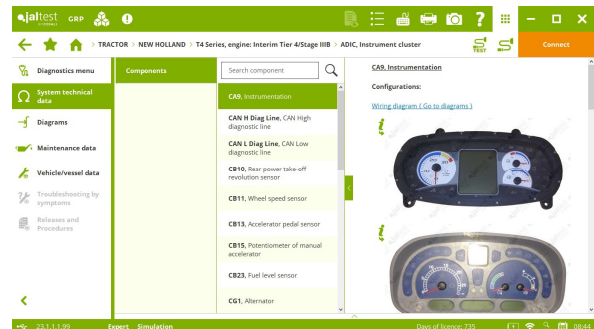
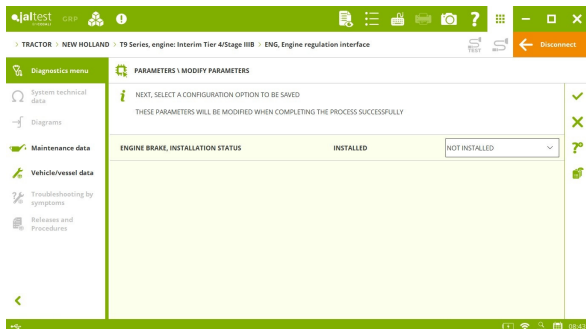
RPTO front power take-off system, system parameter configuration.

TCM transmission system, system parameter configuration.

ENG engine regulation interface, system parameter configuration.

Troubleshooting guides by fault code in several brand systems.

In addition, new technical data available for **ACM**, **ADIC** and **DEC** systems in the **T6 Series – DCT, engine: Final Tier 4/Stage IV** model.



SAME

MVCU maintenance control system in **Frutteto S/V Series**, **Frutteto Series**, **Explorer TB Series** and **Frutteto CVT Series** models.

EMR4 – EDC 17 CV52 engine control system, AdBlue/DEF module cleaning.

STEYR

EDC 17 CV41 + Denox 2.2 engine control system, AdBlue/DEF module cleaning.

Troubleshooting guides by fault code in several brand systems.

VERSATILE

TC-PST transmission system, **FAS** suspension system and **B4.5/6-7 CM2350** engine control system in the **175 Tractor** model.

HARVEST EQUIPMENT

In harvest equipment, the **ACM** anti-pollution system, installed in models of brands such as **CLAAS**, **DEUTZ-FAHR** or **FENDT**, extends its coverage and advanced diagnostics functionalities such as the regeneration of the diesel oxidation catalyst or the system parameter configuration.

CASE iH

New troubleshooting guides by fault codes in the **ENG** engine regulation interface.

New System Display in the **QSC 8.3 CM850** engine control system for **Axial-Flow 5088/6088/7088/2566/2688/2799** models.

CHALLENGER

EEM4F – EDC 17 CV41 engine control system, AdBlue/DEF module cleaning. In addition, new wiring diagram configurations.

CLAAS

⊕ **CEBIS** electronic module.

C4.4 / C6.6, J1939 engine control system, activation of the exhaust gas pressure regulator.

1204F, J1939 engine control system, activation of the fuel pump relay.

FENDT

⊕ **ACM** anti-pollution system.

New wiring diagram configurations available for the **EEM4 / EEM4F – EDC 17 CV54 / EDC 17 CV41** system.

JOHN DEERE

⊕ **IHU** header control system.

⊕ **CSM** modular switch panel.

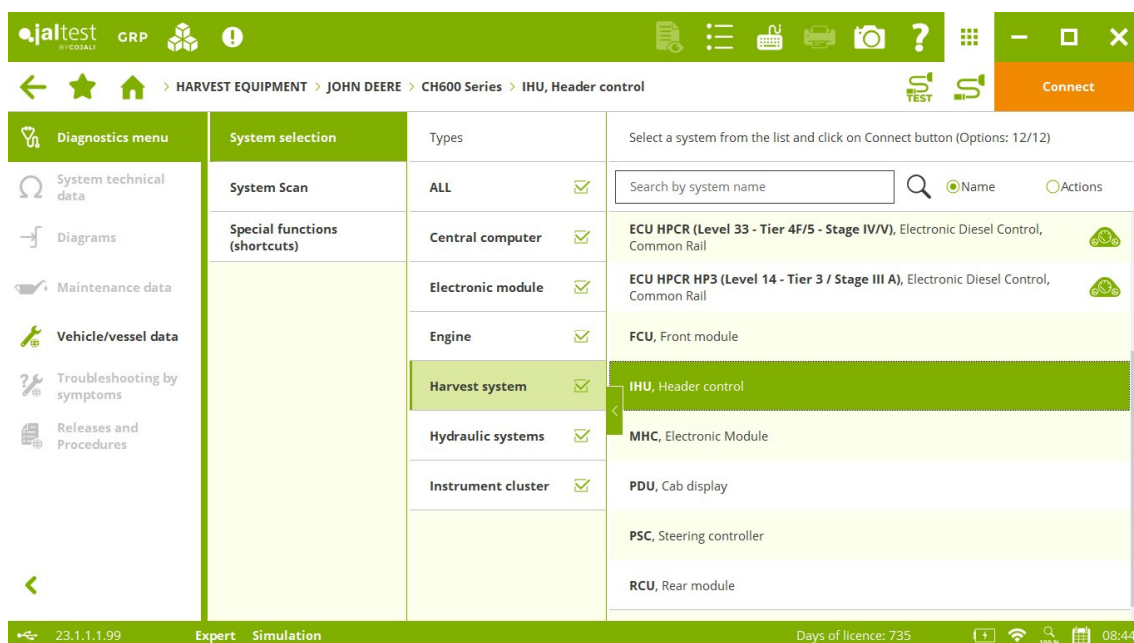
⊕ **CAB** cab module.

⊕ **PDU** cab display.

⊕ **MHC** electronic module.

⊕ **PSC** steering controller.

⊕ **VCU** central computer.



The screenshot displays the jaltest AGV software interface. The top navigation bar includes the jaltest logo, a GRP icon, and various tool icons. The breadcrumb trail indicates the path: HARVEST EQUIPMENT > JOHN DEERE > CH600 Series > IHU, Header control. A 'Connect' button is visible on the right. The main interface is divided into a left sidebar with a 'Diagnostics menu' and a central area for 'System selection'. The 'Diagnostics menu' includes options like System technical data, Diagrams, Maintenance data, Vehicle/vessel data, Troubleshooting by symptoms, and Releases and Procedures. The 'System selection' table lists various systems with checkboxes for selection. The 'Harvest system' is currently selected, showing a list of components including IHU, Header control, MHC, Electronic Module, PDU, Cab display, PSC, Steering controller, and RCU, Rear module. The bottom status bar shows the version 23.1.1.1.99, Expert Simulation mode, Days of licence: 735, and the time 08:44.

System selection	Types	
System Scan	ALL	✓
Special functions (shortcuts)	Central computer	✓
	Electronic module	✓
	Engine	✓
	Harvest system	✓
	Hydraulic systems	✓
	Instrument cluster	✓

ECU HPCR (Level 33 - Tier 4F/5 - Stage IV/V), Electronic Diesel Control, Common Rail

ECU HPCR HP3 (Level 14 - Tier 3 / Stage III A), Electronic Diesel Control, Common Rail

FCU, Front module

IHU, Header control

MHC, Electronic Module

PDU, Cab display

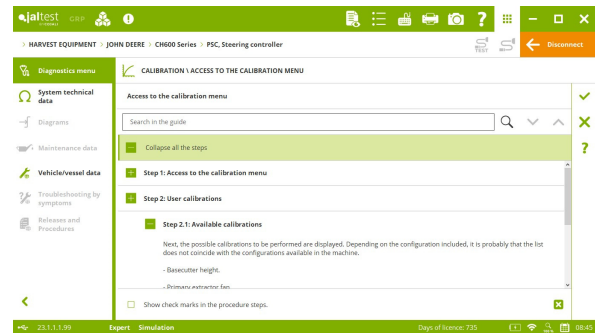
PSC, Steering controller

RCU, Rear module

New guide to access the menu of harvester calibrations in the **PSC** system of **CH300 Series, CH500 Series** and **CH600 Series** models.

Troubleshooting guides by fault code in several brand systems.

In addition, new wiring diagrams and technical data available for the **FCU** front module.



NEW HOLLAND

⊕ **EDC 17 CV41 Vector** engine control system.

SELF-PROPELLED AND TRAILING IMPLEMENT

As in tractors and harvest equipment, **Deutz EMR4 – EDC 17CV52, EMR5 – EDC MD1, Sisu EEM4F – EDC 17 CV41** and **FPT EDC 17 CV41 + Denox 2.2** engine control systems include the AdBlue/DEF module cleaning in models of brands such as **AGRIFAC, CASE iH, HOLMER, PELLENC** or **STORTI**.

Improved wiring diagrams and technical data in the **ECU HPCR (Level 34 – Tier 4F/5 – Stage IV/V)** system of brands such as **COE, ENERGREEN, STRAUTMANN** or **WEISS MCNAIR**.

The **EMS V4** engine control system, installed in models of brands such as **SITREX-AGM TATOMA** or **VERVAET**, extends its coverage with the EGR solenoid valve activation and the exhaust gas recirculation check.