

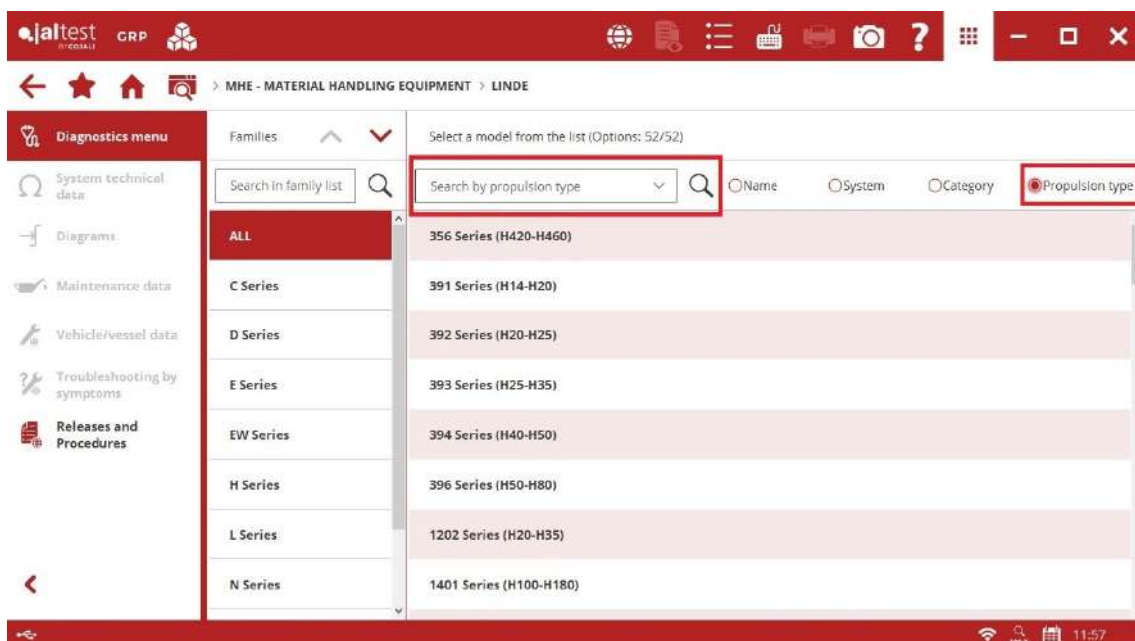
jaltest **MHE** MATERIAL HANDLING

INNOVATIONS 22.3

SOFTWARE INNOVATIONS

The new software version Jaltest 22.3 once again offers more improvements and innovations that consolidate this tool as a benchmark in multi-brand diagnostics for commercial vehicles, agricultural equipment, OHW equipment, material handling equipment and vessels.

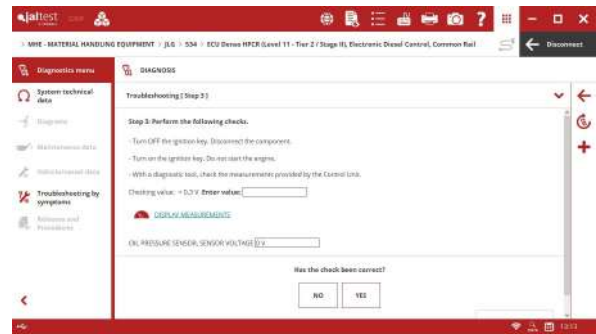
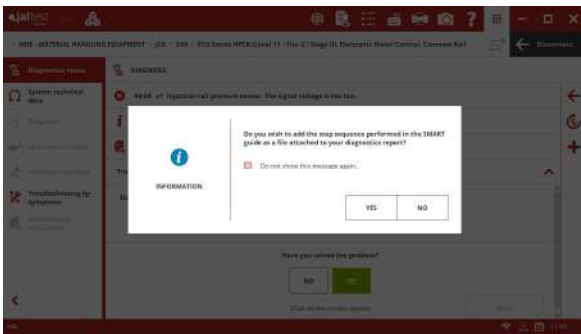
Overall, some improvements in the software usage have been included, for example, new descriptions for each of the additional modules grouped on the upper toolbar of the application. It is also important to highlight the group of models categorised by propulsion type (electric vehicle, diesel engine, etc.) or the extension in the data recorder duration.



In Jaltest Feedback forms, the phone number and other fields are automatically filled provided that they have been previously configured in the user and company data in GRP.

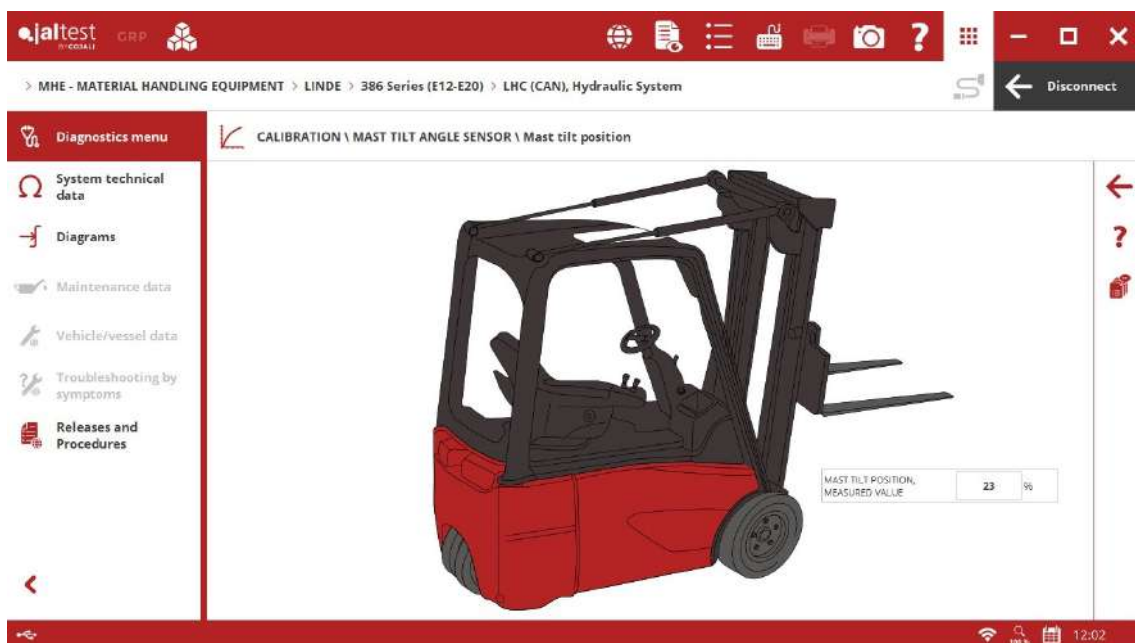
SMART guides

Several innovations have been included in SMART guides. This version, the step sequence of a SMART guide can be attached as file to the diagnostics report, in the steps of these guides the values of the system measurements, as well as the result of performing a reading or error clearance can also be displayed. In addition, there are text boxes so that the user can enter measured values manually, etc.



System Display

From this version, in System Display, different elements from the image can move independently depending on the measurement value and new types of measurement graphic representation have been included. In addition, during the execution of a check or activation, steps can be displayed directly through a System Display.



GRP

The user experience has been significantly improved in GRP, taking into account the following innovations:

- Improved database lookup times of the GRP synchronisation.
- The possibility of creating alarms and notifications from Reports.
- The possibility of entering phone number by user.
- Improved management and display of files attached to GRP entities.
- Access to "Human Resources" menu for service managers.

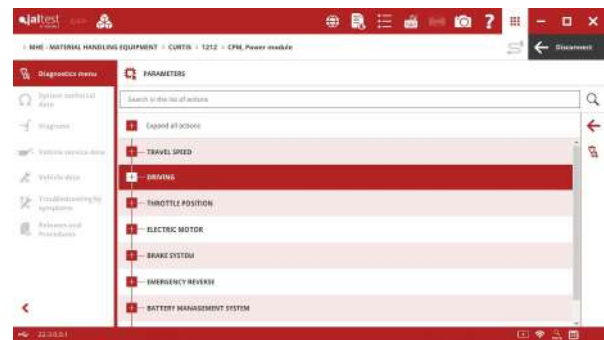
BRANDS AND MODELS

Take into account that this document is only a summary of the most relevant information of this new version. For further information, please visit Jaltest Report.

Some of the brands in Jaltest are listed below: **AGRIMAC, COMBILIFT, HARLO, HOLLAND LIFT, MB, MOFFET, PRINCETON** and **UNICARRIERS**.

In this version, it is important to note that **CURTIS** brand has been included. A new **JDC 566.9** cable is required to connect to the power modules of this manufacturer.

In addition, the number of models in the following brands has increased: **CATERPILLAR** (DP and EP families), **JUNGHEINRICH** (EFG 400 family), **MITSUBISHI** and **PRAMAC** that includes new electric stacker models.



DIAGNOSTICS AND SYSTEMS

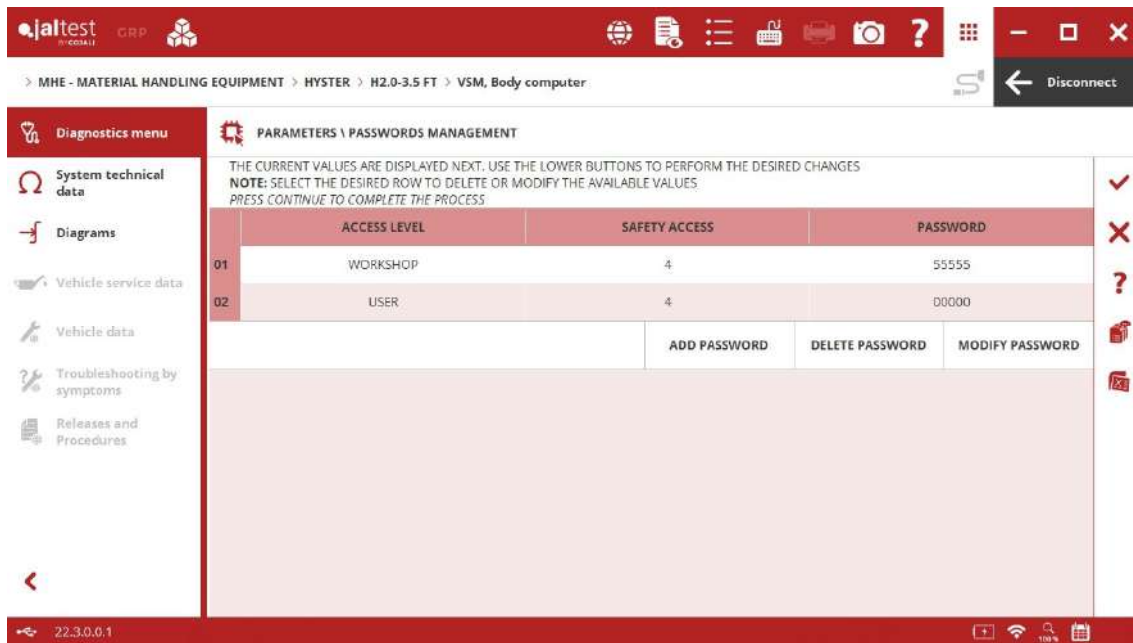
CATERPILLAR

- ⊕ Power management system for **TRACTION** for electric forklifts that includes advanced functions of parameter configuration.
- ⊕ Power module of the **HYDRAULIC** system for electric forklifts.

LOGICS (on RS232) central computer for electric forklifts, parameter modification of the hydraulic and control traction systems, configuration and limitation of the machine.

HYSTER

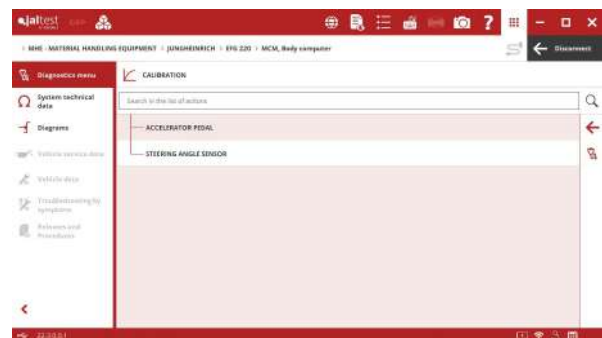
Modification of the login password to perform advanced functions in the **VSM** central computer.



In addition, new wiring diagram configurations available for **RMC** and **LMC** power modules of **A** and **E Series**.

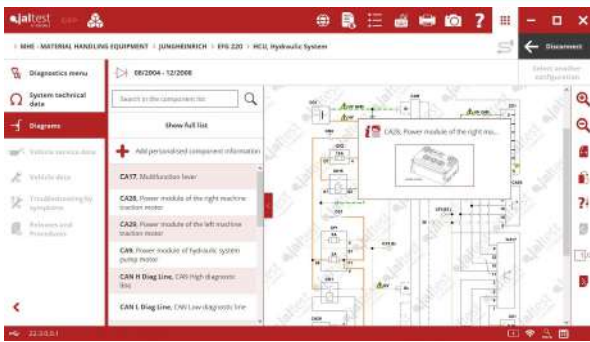
JUNGHEINRICH

MCM central computer for **EFG 200** and **EFG 300** models, modification of the gear shifting program and the machine traction speed, calibration of the steering angle sensor, etc.



MCM central computer for **ETV 200** and **ETV 300** models, modification of the equipment parameters and the hydraulic system parameters, calibration of the accelerator pedal, etc.

⊕ New **MCM** central computer that includes advanced functions of parameter configuration and the accelerator pedal calibration.

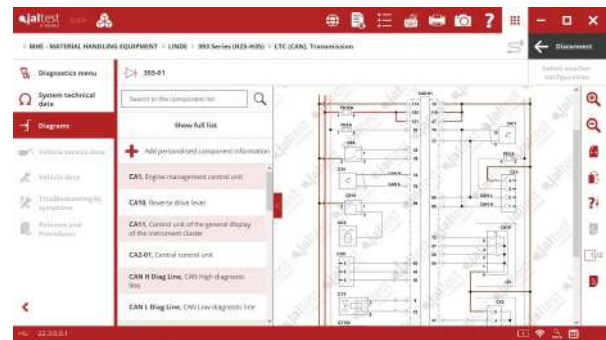
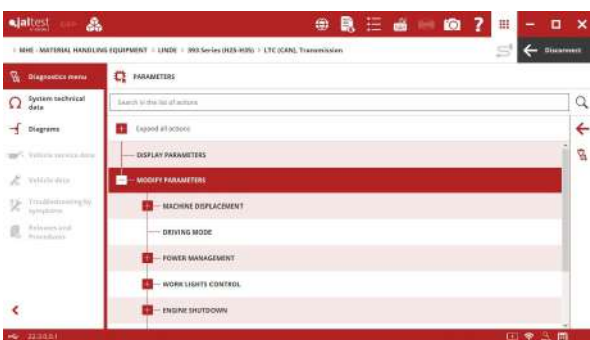


In addition, new wiring diagram configurations available for the **HCU** hydraulic system and for **RMC** and **LMC** power management systems for traction, for **EFG 200 Series** models, as well as for the **MCM** central computer for **EFG 300 Series** models.

LINDE

LTC traction control system for internal combustion models, parameter modification of the engine shutdown configuration, the machine lock configuration with open doors, etc.

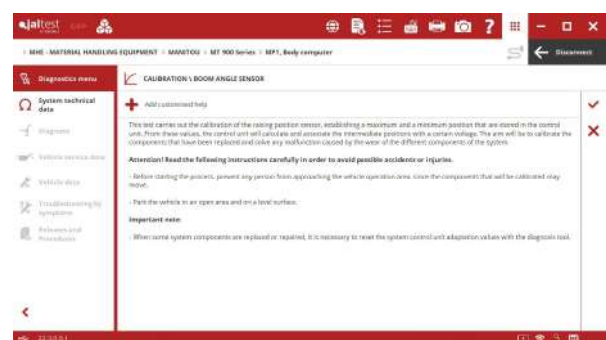
New wiring diagram configurations available for H Series models in **LPF**, **LTC**, **LHC** systems and **VW** and **Deutz** engine control systems.



MANITOU

⊕ **MP1** and **MP2** central computers for telescopic handlers of **MT800**, **MT900** and **MT1000** series that include the boom position calibration.

In addition, new wiring diagram configurations available for the **TCON.K** transmission.

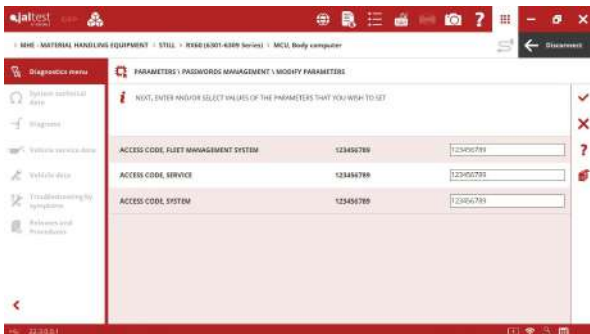


MITSUBISHI

- ⊕ **EDC D04** engine control system.
- ⊕ Power management system for **TRACTION** for electric forklifts that includes advanced functions of parameter configuration.
- ⊕ Power module of the **HYDRAULIC** system for electric forklifts.

LOGIC central computer for electric forklifts, parameter modification.

STILL

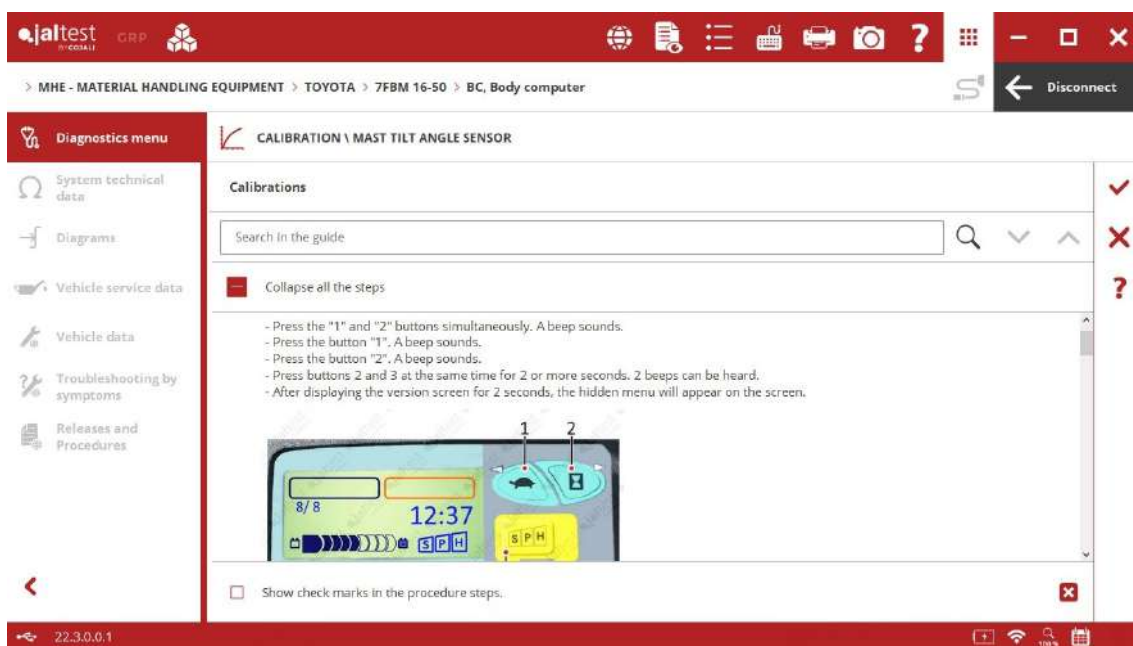


MCU central computer for cutting-edge forklifts, system checks, parameter configuration of the hydraulic system, modification of the driving programs, etc.

Password management.

TOYOTA

⊕ Central computer for **7FB** electric forklifts.



XTREME

Wiring diagram configurations for **Perkins** engines in **XR Series** models.

YALE

Modification of the login password to perform advanced functions in the central computer.

In addition, new wiring diagram configurations available for **RMC** and **LMC** power modules of **ERC** and **ERP Series**.