

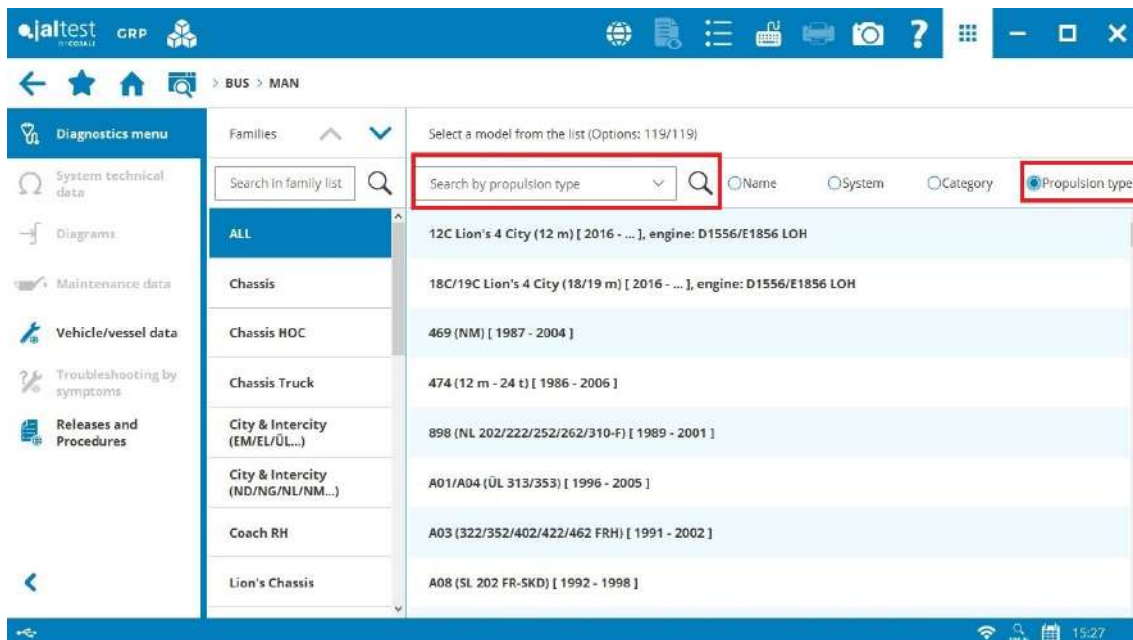


INNOVATIONS 22.3

SOFTWARE INNOVATIONS

The new software version Jaltest 22.3 once again offers more improvements and innovations that consolidate this tool as a benchmark in multi-brand diagnostics for commercial vehicles, agricultural equipment, OHW equipment, material handling equipment and vessels.

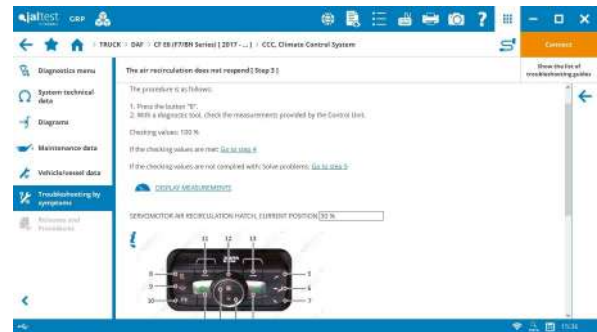
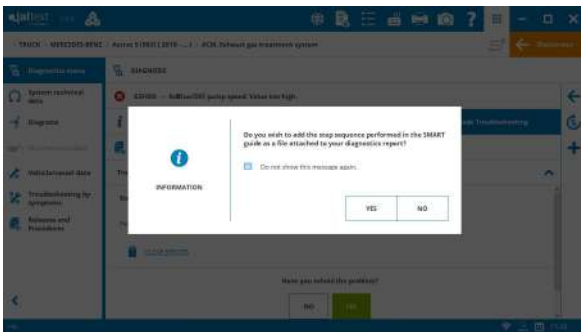
Overall, some improvements in the software usage have been included, for example, new descriptions for each of the additional modules grouped on the upper toolbar of the application. It is also important to highlight the group of models categorised by propulsion type (electric vehicle, diesel engine, etc.) or the extension in the data recorder duration.



In Jaltest Feedback forms, the phone number and other fields are automatically filled provided that they have been previously configured in the user and company data in GRP.

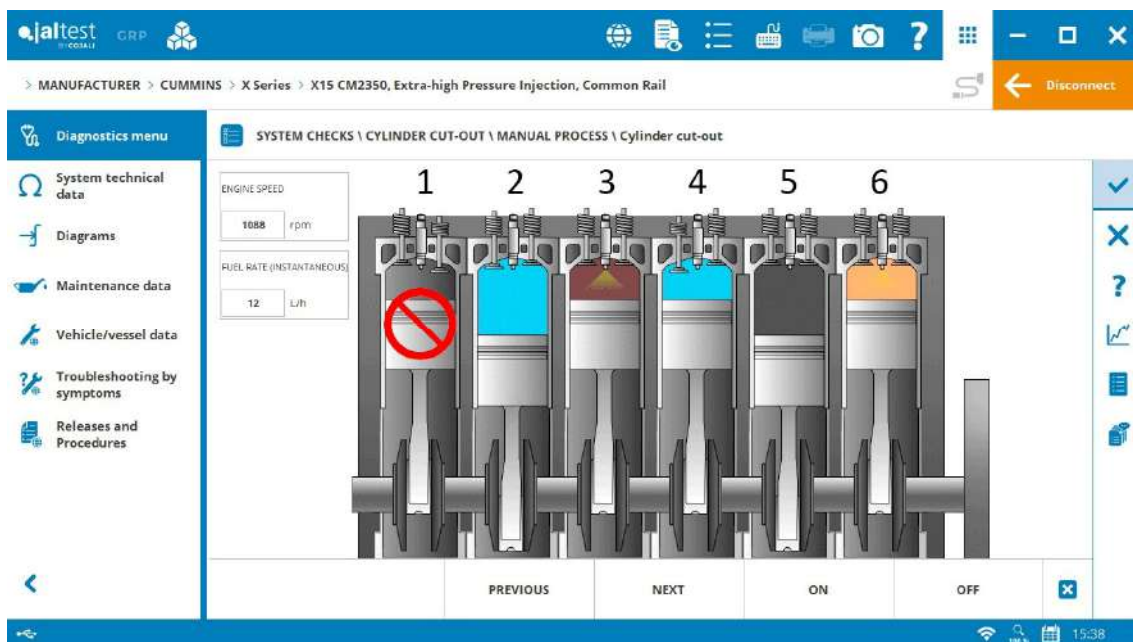
SMART guides

Several innovations have been included in SMART guides. This version, the step sequence of a SMART guide can be attached as file to the diagnostics report, in the steps of these guides the values of the system measurements, as well as the result of performing a reading or error clearance can also be displayed. In addition, there are text boxes so that the user can enter measured values manually, etc.



System Display

From this version, in System Display, different elements from the image can move independently depending on the measurement value and new types of measurement graphic representation have been included. In addition, during the execution of a check or activation, steps can be displayed directly through a System Display.



GRP

The user experience has been significantly improved in GRP, taking into account the following innovations:

- Improved database lookup times of the GRP synchronisation.
- The possibility of creating alarms and notifications from Reports.
- The possibility of entering phone number by user.
- Improved management and display of files attached to GRP entities.
- Access to "Human Resources" menu for service managers.

BRANDS AND MODELS

Take into account that this document is only a summary of the most relevant information of this new version. For further information, please visit Jaltest Report.

Some of the new models and brands of this version are listed below.

BYD

New brand of electric buses, K9UB model.

CITRÖEN

e-Berlingo [B9], [K9]

DAF

XF E6 (G2/CB Series) [2021 - ...]

XG/XG+ E6 (G3/CB Series) [2021 - ...]

FIAT

Ducato MCA

Doblo 1.3 Cargo/Multijet

IVECO

Daily Ecoline Euro 5 (**LATAM**)

X-Way NP (Natural Power) [2020 - ...]

LDV/MAXUS

V80 2.5 TD

V90 Deliver9 2.0 VGT

MERCEDES-BENZ

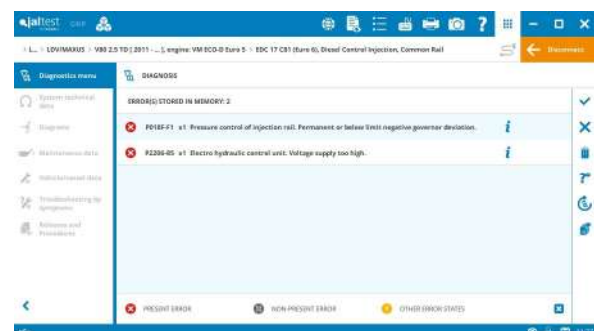
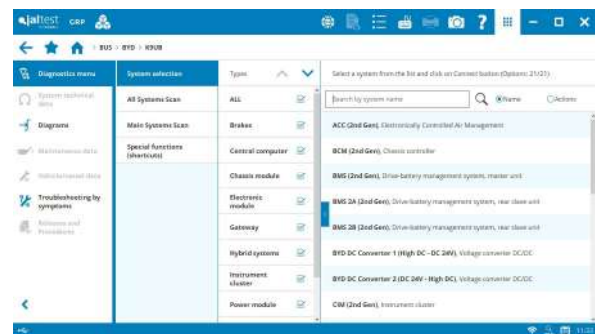
Intouro Euro 6e (WEB410.730) [2022 - ...]

MITSUBISHI FUSO

New e-Canter

OPEL

Combo-e [E]



PEUGEOT

e-Partner [B9]

e-Partner [K9]

RENAULT

Kangoo Z.E [2011 - 2017]

TOYOTA

Hilux 2.5 D-4D

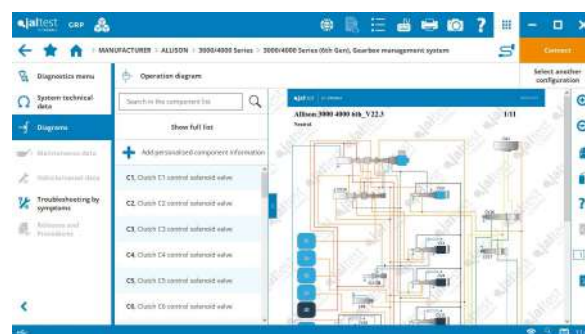
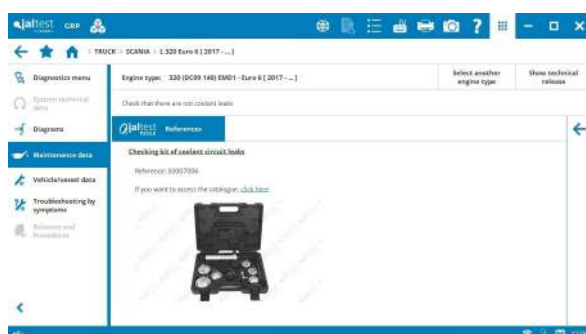
Proace City Electric [K9]

DIAGNOSTICS AND SYSTEMS

Take into account that this document is only a summary of the most relevant information of this new version. For further information, please visit Jaltest Report.

Overall, there are new technical information and troubleshooting guides (now **SMART guides**) by symptoms and of the most common error codes in the workshop thanks to the communication channels with clients such as the technical support offered by the project, training, Jaltest Feedback and “Product improvement” option.

This version includes new procedures in which the use of special tools from Jaltest Tools is essential, such as the use of the reference **50007006 – CHECKING KIT OF COOLANT CIRCUIT LEAKS**, removal tools and injector sleeves assembly in several engine types or the reference **50105130 – KIT FOR THE DISCONNECTION OF THE FUEL LINES, GRI 11.8mm**, among others.



Extended coverage in all vehicle and manufacturer brands. For example, in models with **FPT** engines and **EDC 17 CV41** system, new system activations and extended coverage in **Allison** transmissions. In addition, the new **Allison 6th Gen** generation that includes troubleshooting guides, wiring diagrams and technical information has been developed.

More than 500 references of **CUMMINS** systems have been included. In these systems, the display format of parameters has also been improved. New **ISL9 L111, X15 X123B Euro 6d** and **F3.8 F12j0B/F132B Euro 6** engine types with technical data have been created, which include procedures such as *“Fuel filter change”* or *“Valve adjustment”*. In this brand, it is also important to highlight the development of the new **ISX CM570 (on SAE J1939)** engine control system for the **LATAM** market.

Lastly, there are new **SMART guides** and new **Wingman Fusion FLC20** ADAS system parameters with driver assistance camera, which is installed on several models of truck and bus brands such as **OTOKAR, FORD**, etc.

TRUCK

DAF

As a new innovation, it is worth noting the **SMART guide** associated to the P3776 *“Too low efficiency in diesel oxidation catalyst”* error in the **PCI on KWP2000** engine control system.

PCI-2 engine control system, checks and maintenance services of the system.

VECU-2 vehicle control unit, light activation.

IVECO

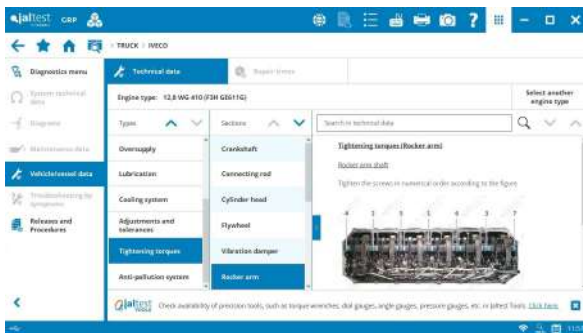
EDC MD1 + Denox 6-HD engine control unit, activations and system checks.

VCM2 vehicle control unit, key programming.

AHW auxiliary heating, heater unlocking.

⊕ **Telma IRCS** and **MCR 36/48** electric retarders.

New procedures included in several engine types of the brand such as *“Valve adjustment”* in **F2B FA601, F2C FE611**, etc. engine types or *“Replacement of the sleeves and injectors”* in **F2B, F3A** and **F3B E3681** engine types.



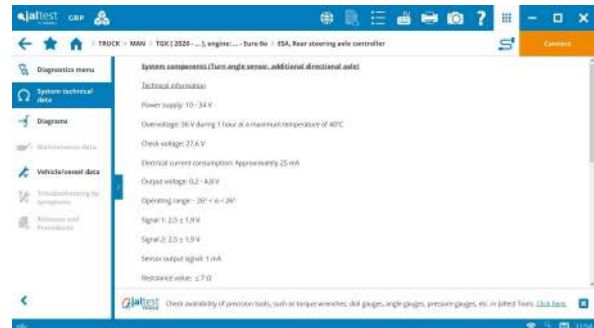
In addition, engine types with available technical data have been included, such as **8,7 WG 340 (F2C FE601C)** or **12,8 WG 410 (F3H GE611G)** among others, and the maintenance services have been completed in almost every model of the brand.

MAN

EDC 17 engine control system, Lambda sensor reset.

⊕ **ESA** rear steering axle.

New procedures included in several engine types of the brand such as *"Fuel filter change"* in **D0834, D0836, D2066, D2676, D2840** and **D2876** engine types or *"Particulate filter change"* in Euro 6 engine types.



MERCEDES-BENZ

In vehicles with **MB5 technology**:

EAPU compressed air treatment and generation system, manual deactivation of the automatic functions of the electronic parking brake.

APS 3 servo steering, calibration of the centred position and turning limits.

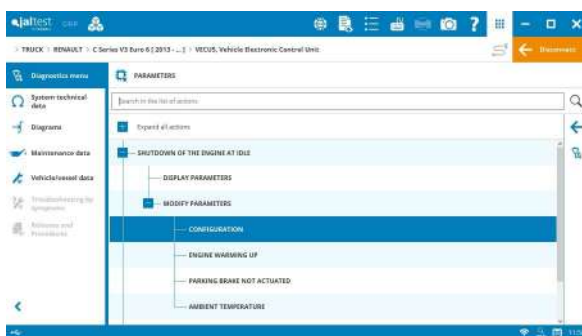
New **Voith** variant in the **RCM** retarder.

In **Unimog** vehicles:

⊕ **TCP** tyre pressure control system.

RENAULT

In vehicles with **V3 technology**:



EMS DTI engine control system, reset of the Lambda parameter values after component replacement.

VECUS vehicle control system (for vehicles after 2020), configuration parameters of the shutdown of the engine at idle (timer, timer for warning, and engine heating).

In vehicles with **V4 technology**:

⊕ **EAS** rear steering axle.

EMS DTI engine control system, reset of the NOx values after component replacement.

SCANIA

EBS 7 brake system, coverage for 6x2 and 8x2 vehicles.

AHS WTA2 auxiliary heating, heater check.

VOLVO

In vehicles with **V2 technology**:

Denox 2.1 exhaust gas aftertreatment system, AdBlue/DEF module reprogramming for new and used modules.

In vehicles with **V3/V4 technology**:

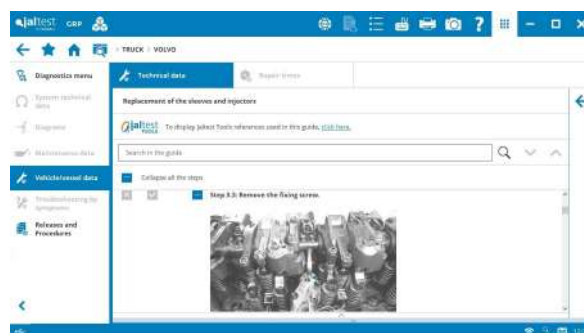
⊕ **BBM** bodywork module in V3 models.

ACM exhaust gas aftertreatment system, check and cleaning of the AdBlue/DEF module.

VMCU vehicle control unit in V4 models, configuration of the engine crank inhibition with active power take-off.

DACU ADAS system of driver assistance, tyre size configuration.

New procedures included in several engine types of the brand such as “*Replacement of the injector sleeves*” in **D9B, D13K2/K4/K5/K6 TC** and **D16K** engine types.



BUS

KING LONG

⊕ **X11 CM2670 Cummins** engine control system.

IRISBUS

SGW security module unlocking in **CROSSWAY Euro6e [2022 - ...]** models, which allows you to perform advanced diagnostics functions.

Denox 1 exhaust gas aftertreatment system, AdBlue/DEF module reprogramming.

IRIZAR

VSE ETS steering control unit, system calibrations.

MAN

Thermo S/Plus Webasto auxiliary heating, component activation.

MERCEDES-BENZ

The system scan process has been optimised and improved in vehicles Euro 4/5.

In vehicles with **MB4 technology**:

EBS brake system, **ESP** stability control system calibration.

HAD hydrostatic front traction, system purge.

SCANIA

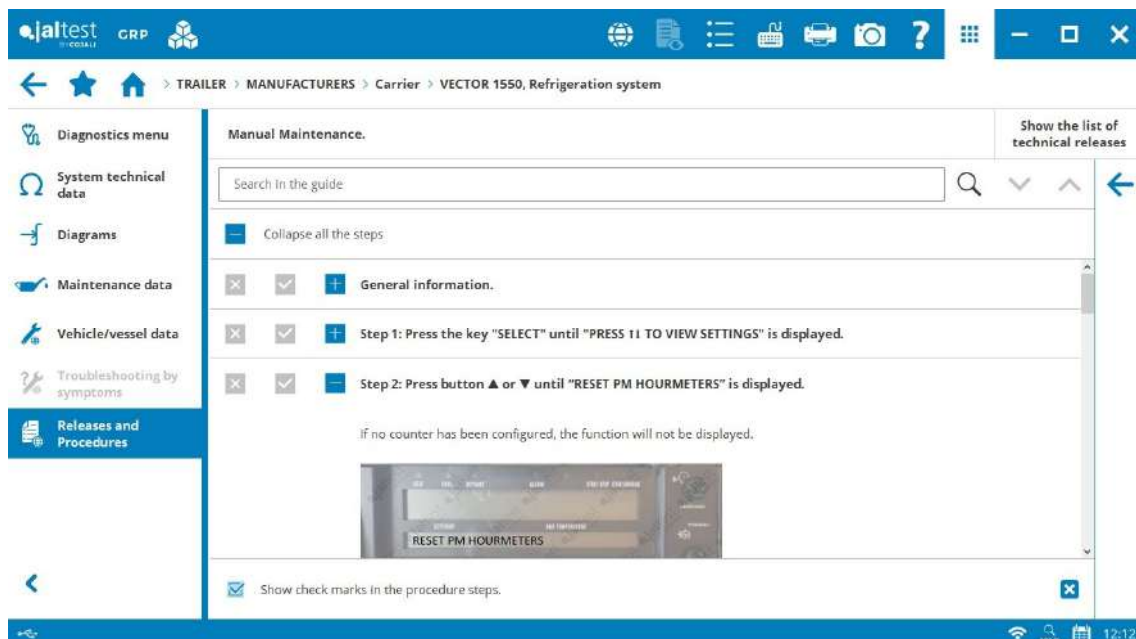
⊕ Systems for hybrid vehicles: master unit of the **BMU6** drive-battery management system, **IBU2** hybrid battery management system and **MGU** electric motor control unit.

EMS EMO1 CNG/LNG Euro 6 engine control system, operation data of the coolant temperature, oil pressure and engine load.

TRAILER

CARRIER

Technical release to perform the maintenance reset in **VECTOR 1550** modules.



LIGHT COMMERCIAL VEHICLE

FIAT

SGW security module unlocking in **Ducato MCA Euro 6d** models, which allows you to perform advanced diagnostics functions.

IVECO

DCU exhaust gas aftertreatment system in the **Daily MY.2019** model, AdBlue/DEF dosing test, AdBlue/DEF leak control test, AdBlue/DEF pump test, etc.

ISUZU

⊕ **6NX1** engine control system.

MERCEDES-BENZ

⊕ **PTS Parktronic** parking control system in **Vito [447]**, **Sprinter [906]** and **Sprinter [907/910]** models.

VOLKSWAGEN

Model wiring diagrams in **T6 [SG]** (**Transporter**, **California**, **Caravelle** and **Multivan**) vehicles.

