

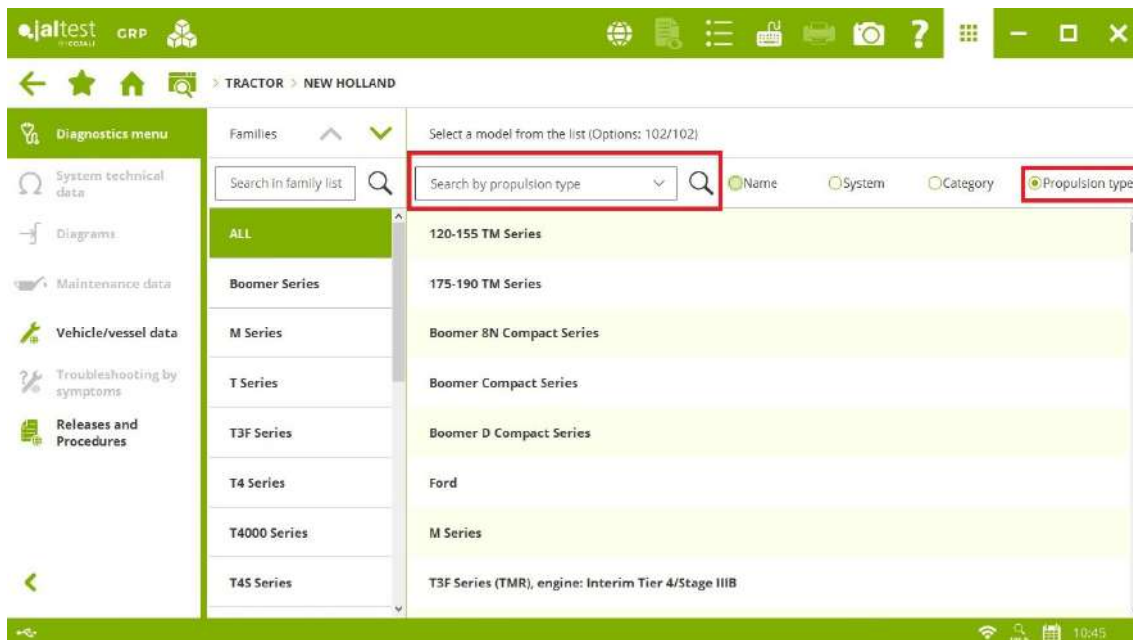


## INNOVATIONS 22.3

# SOFTWARE INNOVATIONS

The new software version Jaltest 22.3 once again offers more improvements and innovations that consolidate this tool as a benchmark in multi-brand diagnostics for commercial vehicles, agricultural equipment, OHW equipment, material handling equipment and vessels.

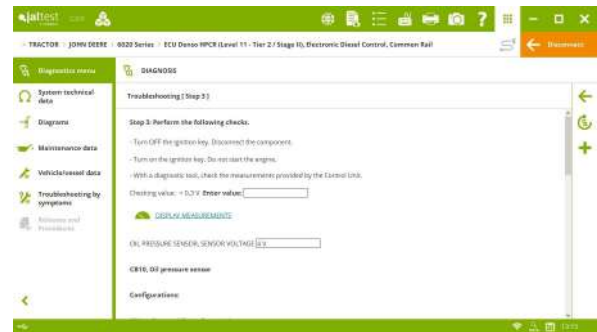
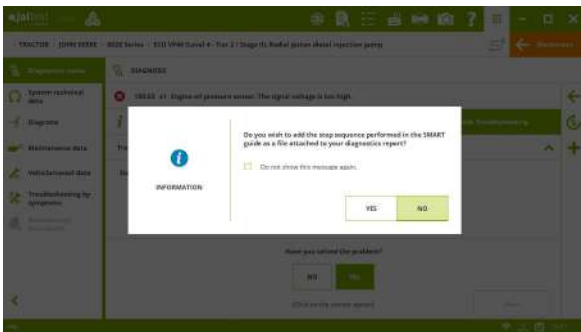
Overall, some improvements in the software usage have been included, for example, new descriptions for each of the additional modules grouped on the upper toolbar of the application. It is also important to highlight the group of models categorised by propulsion type (electric vehicle, diesel engine, etc.) or the extension in the data recorder duration.



In Jaltest Feedback forms, the phone number and other fields are automatically filled provided that they have been previously configured in the user and company data in GRP.

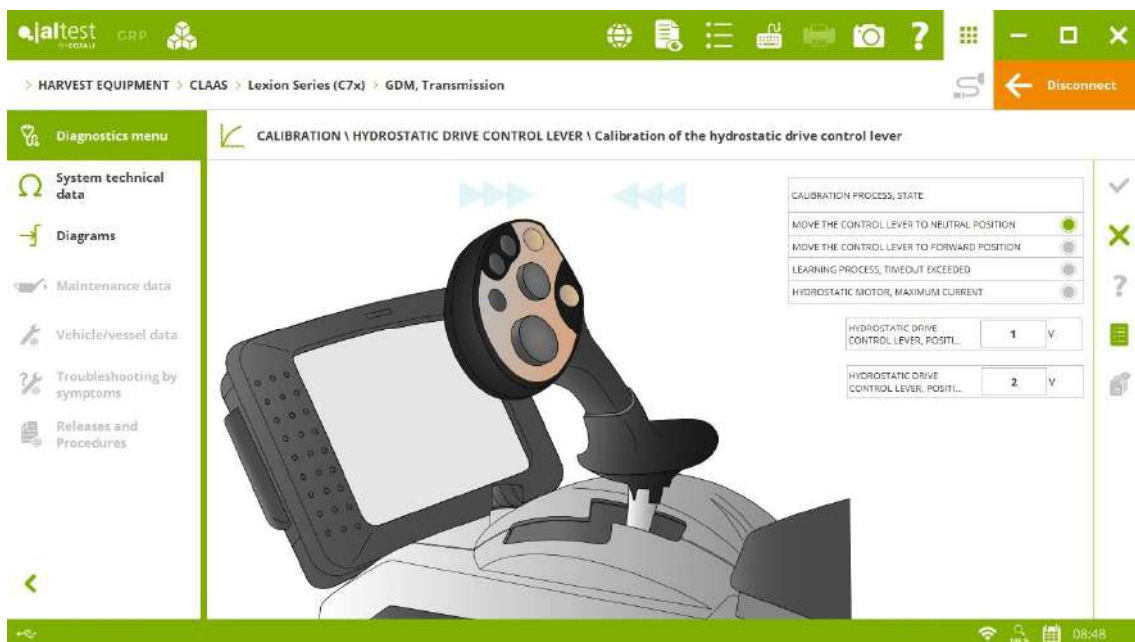
## SMART guides

Several innovations have been included in SMART guides. This version, the step sequence of a SMART guide can be attached as file to the diagnostics report, in the steps of these guides the values of the system measurements, as well as the result of performing a reading or error clearance can also be displayed. In addition, there are text boxes so that the user can enter measured values manually, etc.



## System Display

From this version, in System Display, different elements from the image can move independently depending on the measurement value and new types of measurement graphic representation have been included. In addition, during the execution of a check or activation, steps can be displayed directly through a System Display.



## GRP

The user experience has been significantly improved in GRP, taking into account the following innovations:

- Improved database lookup times of the GRP synchronisation.
- The possibility of creating alarms and notifications from Reports.
- The possibility of entering phone number by user.
- Improved management and display of files attached to GRP entities.
- Access to "Human Resources" menu for service managers.

# BRANDS AND MODELS

---

Take into account that this document is only a summary of the most relevant information of this new version. For further information, please visit Jaltest Report.

Some of the new models and brands in Jaltest are listed below.

## TRACTOR

### CASE IH

Farmall R Compact Series

### DEUTZ-FAHR

8 TTV Series

6 C Series

6C TTV Series

### JOHN DEERE

4020 Series

### KUBOTA

B2 Series

STW Series

### MASSEY FERGUSON

2600 F Series

2600 Series

1700 Series

### NEW HOLLAND

T3F Series (TMR), engine: Interim Tier 4/Stage IIIB

T4S Series (TMR), engine: Interim Tier 4/Stage IIIB

Workmaster Series (50, 60, 70), engine: Final Tier 4/Stage IV

Workmaster Series (95, 105, 120), engine: Final Tier 4/Stage IV

# HARVEST EQUIPMENT

## CASE IH

Sugar cane harvesters:

- 4000 Series
- 9000/9900 Series.

## JOHN-DEERE

**6000 Series** forage harvester.

# SELF-PROPELLED AND TRAILING IMPLEMENT

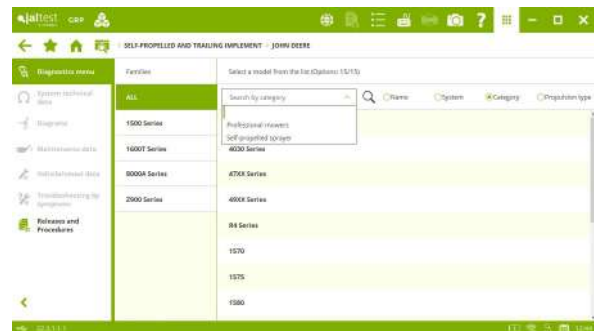
This version the following new brands have been included: **KUBOTA, STRAUTMANN** and **TORO**.

## JOHN-DEERE

Professional mower models.

## MAZZOTTI

IBIS 380 LP, engine: Tier 4/ Stage IIIB.

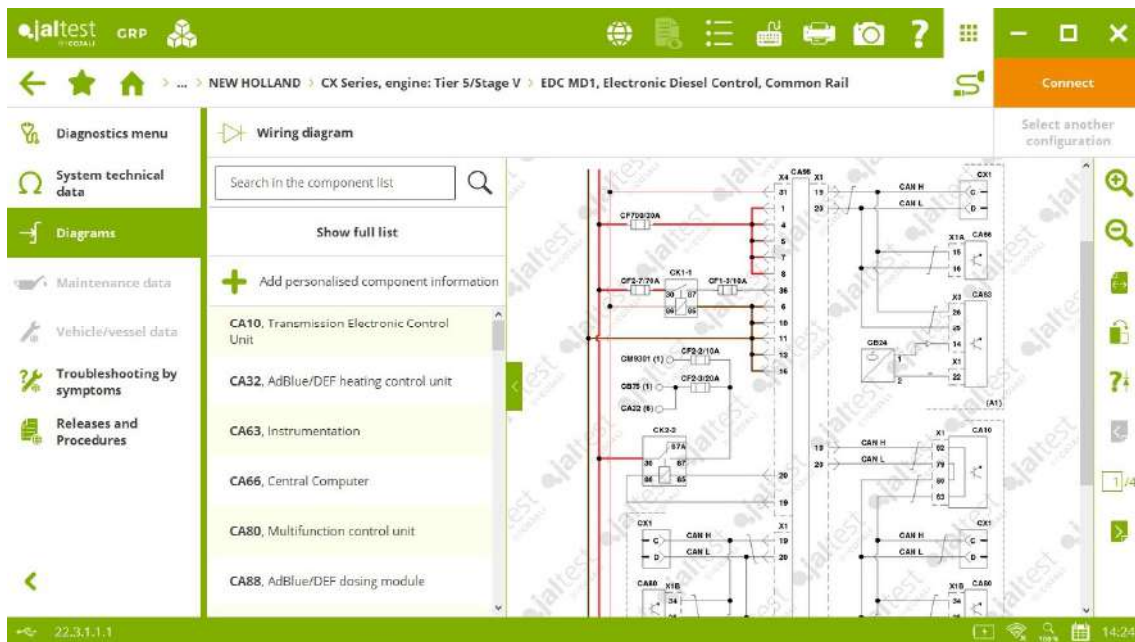


# DIAGNOSTICS AND SYSTEMS

Take into account that this document is only a summary of the most relevant information of this new version. For further information, please visit Jaltest Report.

Overall, there are new technical information and troubleshooting guides (now **SMART guides**) by symptoms and of the most common error codes in the workshop thanks to the communication channels with clients such as the technical support offered by the project, training, Jaltest Feedback and “Product improvement” option.

Extended coverage with advanced functions in the **EDC MD1** engine control system present in several brands such as AGRIFAC, FARESin, GRIM, GUARESI, CASE IH, LANDINI, McCORMICK, etc. In addition, system wiring diagram configurations and component location images have been included in this system as well as in the **EDC 17 CV41 + Denox 2.2** system.



## TRACTOR

### ARBOS

⊕ **DCU** exhaust gas aftertreatment system in **Kohler** engines.

### BOBCAT

**ECM Kioti** engine control system, advanced system functions.

### CASE iH

⊕ **Semi Power Shift** and **Full Power Shift** transmission systems.

Technical release of the steering calibration in the **AST** system.



## CHALLENGER

⊕ New **Chassis Controller** system that includes technical releases for the calibration of the transmission, the rear power take-off clutch, etc.

⊕ **LCP** lighting system.

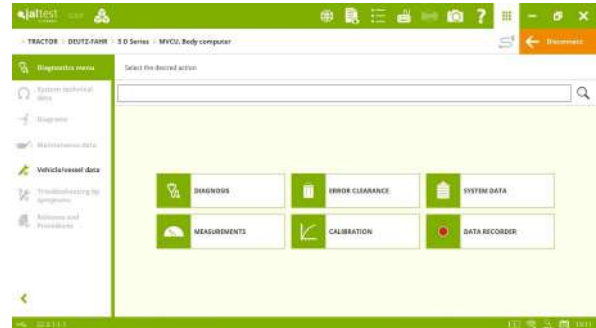
⊕ **AccuTerminate** electronic module.

## CLAAS

**ECU HPCR (Level 33)** engine control system, aftertreatment test of NOx sensors.

## DEUTZ-FAHR

**SECU** maintenance control system in the **9 TTV Series** model and **MVCU** maintenance control system in the **5 D Series** model.



## FENDT

- ⊕ **MFA** armrest system that includes System Display.
- ⊕ **LCP** lighting system.
- ⊕ New instrument cluster.

Technical release of the front suspension calibration in the **Comfort** system in the **300 Vario Series, engine: Tier 3/ Stage III** model.

## HÜRLIMANN

**SECU** maintenance control system in the **XA 60/70/80/90/100** model.

## JOHN DEERE

- ⊕ **ECU HPCR (Level 40)** engine control system.
- ⊕ **SCC** spool valve control system.
- ⊕ **XMB** and **XSB** B-Box steering control systems.



**ECU HPCR (Level 33)** engine control system, aftertreatment test of NOx sensors.

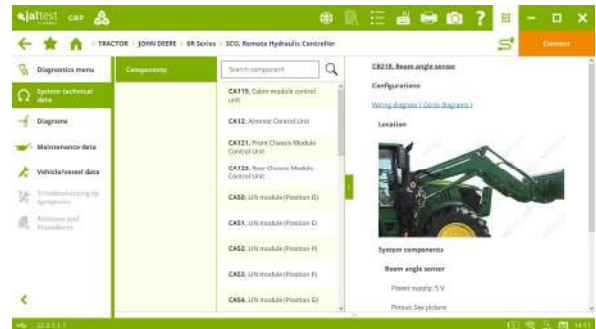
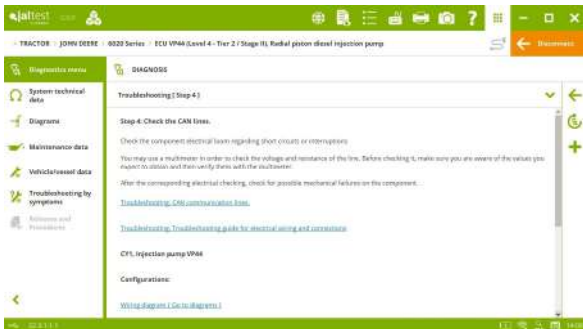
**XSA** A-Box steering control system, calibration of the steering valve, the wheel rotational angle sensor and the steering wheel position sensor.

**XSC** C-Box steering control system, steering valve calibration.

**PTR** transmission, new system configuration parameters.

Troubleshooting guides by error code in several systems of the brand.

In addition, technical data, wiring diagram configurations and component location images have been included in several systems of the brand.



## KIOTI

**ECM Kioti** engine control system, advanced system functions.

## MASSEY FERGUSON

⊕ **Mitsubishi Tier IV** engine control system.

## NEW HOLLAND

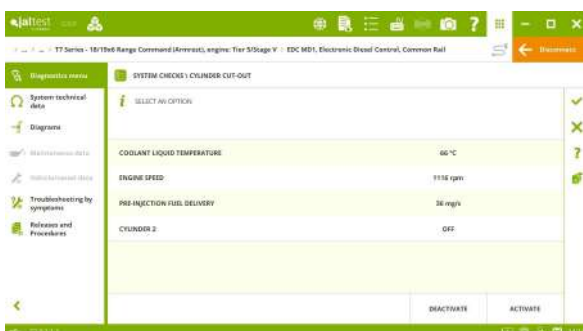
⊕ **Range Command** and **Dual Command** transmission systems.

**EDC MD1** engine control system, extended coverage with advanced functions such as the compression test, the cylinder cut-out or the throttle valve check in the exhaust, among others.

Technical release of the rear lift calibration in the **HCU** system in the **T5 Series – Electro Command (TMR)** model.

Troubleshooting guides by error code in several systems of the brand.

In addition, wiring diagram configurations and component location images have been included in the **EDC 17 CV41 + Denox 2.2** engine control system.





## SAME

New location images of the transmission blocks included in **Diamond Series** models.

## STEYR

**REHR** spool valve system, display of the spool valve identification codes.

Technical release of the **ETC** transmission calibration.

In addition, wiring diagram configurations and component location images have been included in the **EDC 17 CV41 + Denox 2.2** engine control system.

## HARVEST EQUIPMENT

In harvest equipment, extended coverage with the aftertreatment test of NOx sensors in the **ECU HPCR (Level 33)** engine control system present in models of brands such as **COE** or **P. BARIGELLI & C.** Improved wiring diagram configurations in **COE** and **MTS-SANDEI** models of the **ECU Denso (Level 16)** engine control system.

## CASE IH

⊕ **TRANS** transmission system in **8000/8800 Series** models, which includes technical data and wiring diagrams.

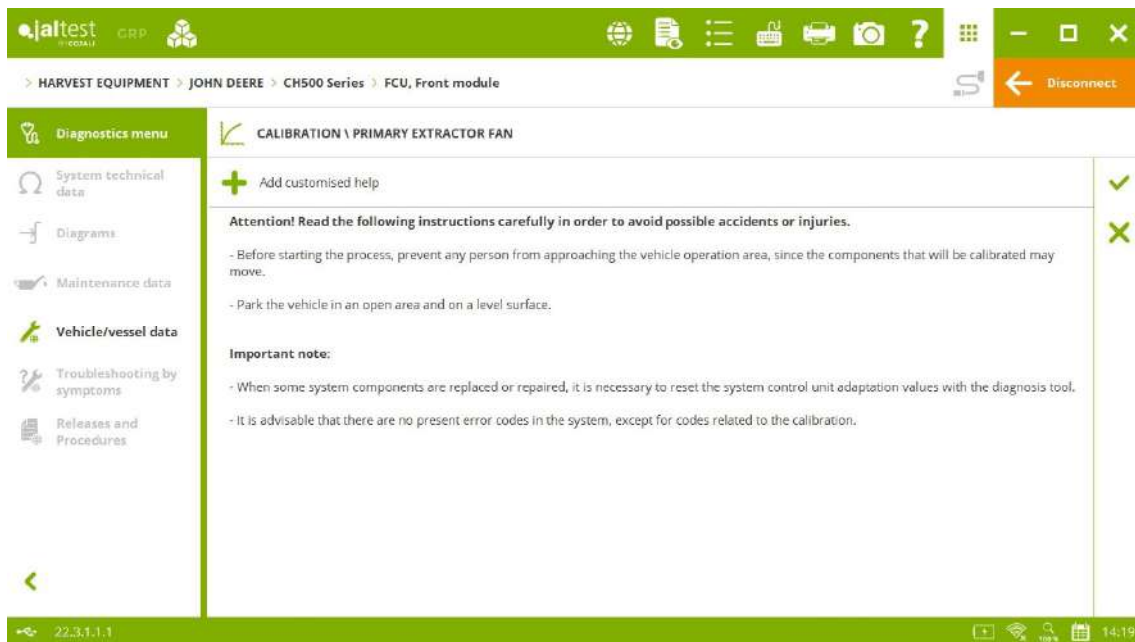
In addition, technical data and wiring diagrams have been included in the **SCM1, SCM2** and **SCM3** harvest control modules.

## CLAAS

New System Display (see image in the “Software Innovations” section)

## JOHN DEERE

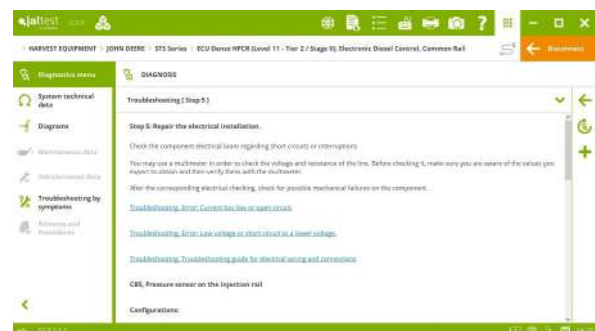
- ⊕ **ECU HPCR (Level 40)** engine control system.
- ⊕ **PDU** instrument cluster.
- ⊕ **RCU** rear module and **FCU** front module.
- ⊕ **GLM** control monitor.
- ⊕ **CSM** modular switch panel.
- ⊕ **CAB** cab control system.
- ⊕ **LC2** header control system.



New guides to access the menu of harvester calibrations in the FCU system of **CH500 Series** and **CH600 Series** models.

Troubleshooting guides by error code in several systems of the brand.

In addition, wiring diagrams have been included in the **ECU Denso (Level 16)** engine control systems and in the **PTP** transmission control system.



## SELF-PROPELLED AND TRAILING IMPLEMENT

As in tractors and harvest equipment, extended coverage with the aftertreatment test of NOx sensors in the **ECU HPCR (Level 33)** engine control system present in models of brands such as **AIR-O-FAN**, **COE**, **HAGIE**, **MAZZOTTI** and **SITREX-AGM**. Furthermore, improved wiring diagram configurations in the **ECU Denso (Level 16)** and **ECU Denso HPCR (Level 11)** engine control systems.