

jaltest
MHE
MATERIAL HANDLING

INNOVATIONS 22.2

SOFTWARE INNOVATIONS

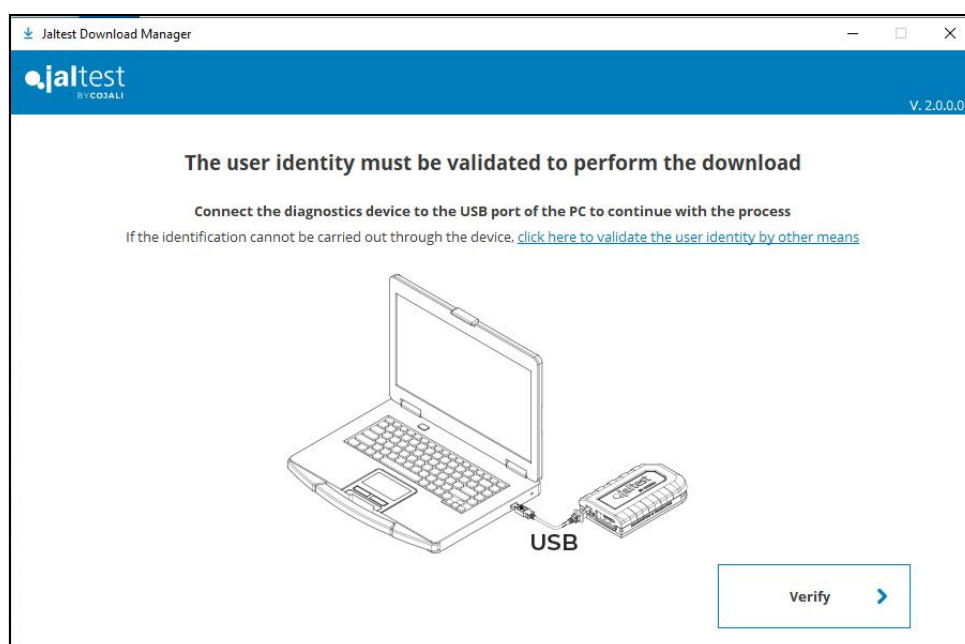
The new software version Jaltest 22.2 once again offers more improvements and innovations that consolidate this tool as a benchmark in multibrand diagnostics for commercial vehicles, agricultural equipment, OHW equipment, material handling equipment and vessels.

From this version, products with licence in force and expired licence can be combined. All clients with licence in force for several products (CV, AGV, MHE...) from 1st January 2022 may renew only some of them without losing access to the rest. The following considerations must be taken into account:

- The renewed products will expire on the same expiration date.
- This behaviour is available from 22.2 version. Please note that access to non-renewed products will be removed with older versions.
- Once using 22.2 Jaltest version or subsequent versions, the diagnostics coverage of non-renewed products will be locked in the version to which you were entitled according to their expiration date.
- The behaviour for the access to non-renewed products will be the same as for products with expired license (currently without access to technical information).

Jaltest Download Manager

Jaltest Download Manager is publicly available to all users on the web. This programme manages the downloads of the versions that correspond to each Jaltest user. It may be useful for first installations when purchasing the device.

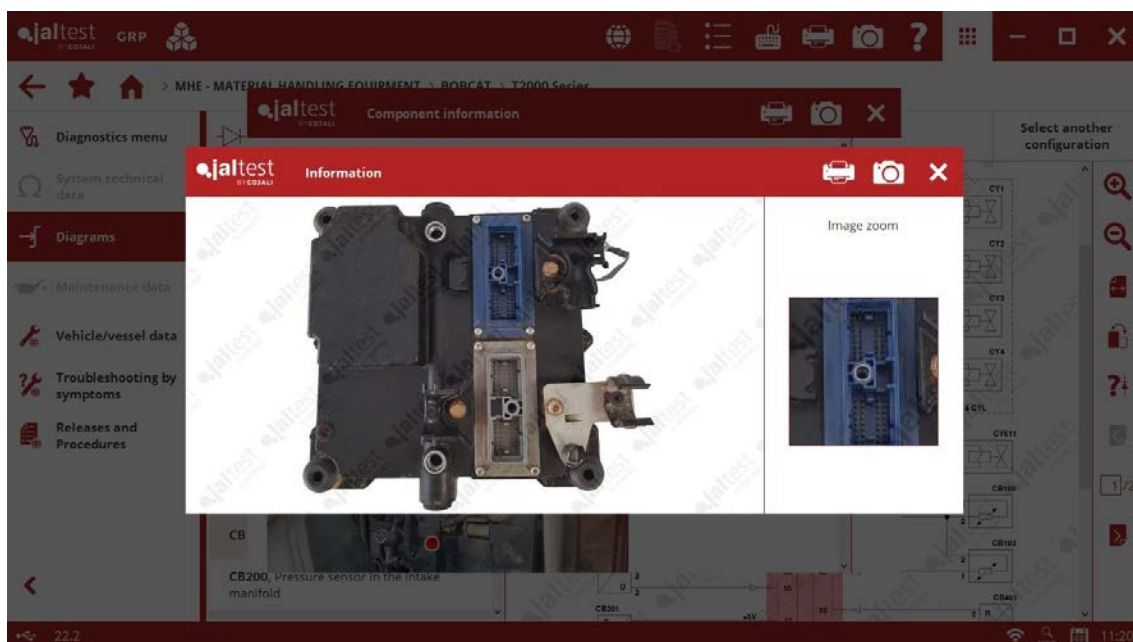


Unknown variants resolution through other brand models

If the reference of a system is unknown, the user will be able to search if any system of the same type contains a variant with the same identifier. Only systems within models of the same brand will be searched.

If the user accepts, the models that contain the found system will be displayed and, after selecting any of them, the system to which the variant belongs will be preselected.

Image zoom



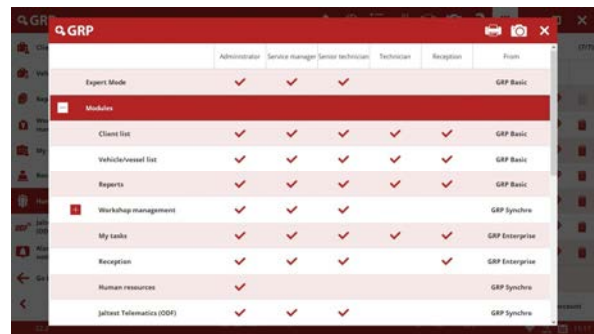
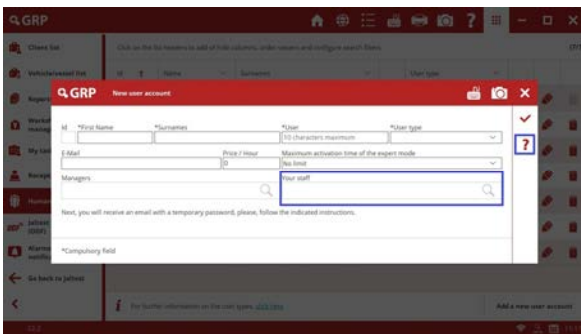
Other functionalities

- Sending of audios through Jaltest Feedback.
- Expert mode timer. In GRP, it will be managed by the administrator for each of the users.
- Displaying of measurement indicators in steps on table.
- Displaying of interactions in SYSTEM DISPLAY visualisations in the steps of an action.
- SMART guides improvements.

GRP

User management improvement

The Service managers can be in charge of a customised group of users, therefore in GRP Enterprise they can manage work orders and tasks only for this group. The management is performed by the Administrator through the Human Resources menu. In addition, in this same menu, a reporting table with the permissions for the different GRP user roles is included.

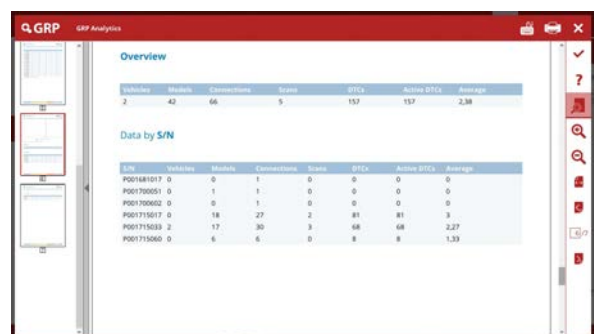
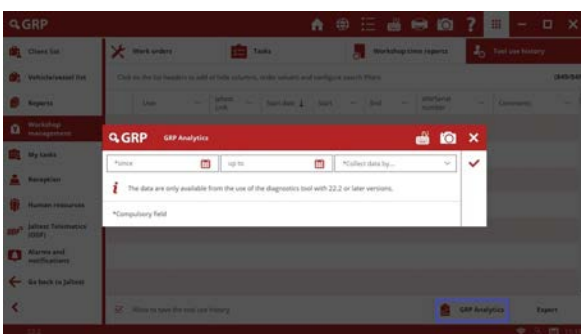


Attention! It is important to note that all GRP users previously created as “Service manager” change to “Senior technician” in 22.2, maintaining the same features. The “Service manager” user can now access the same menus and settings of the programme than the “Administrator” user, except for the Human Resources menu. In this way, all management will not be in the hands of the “Administrator” user.

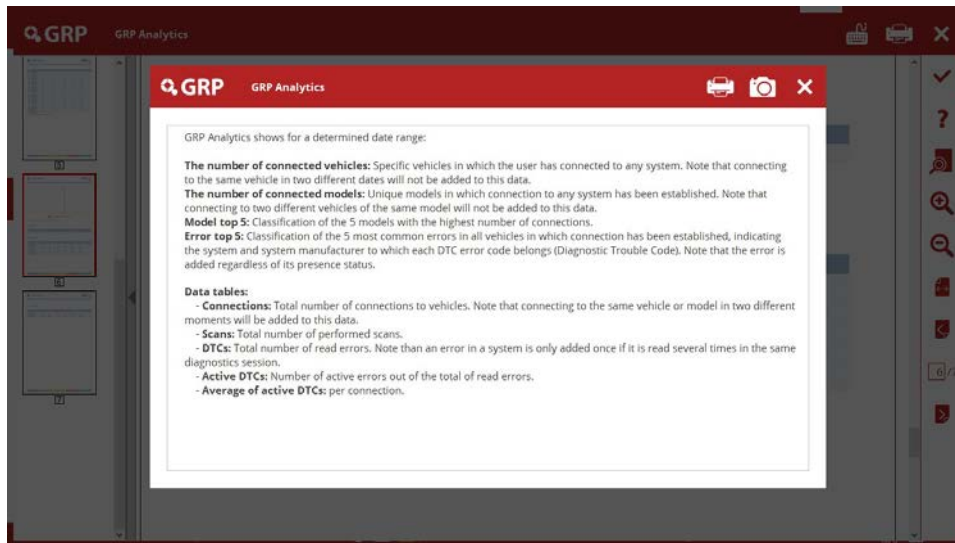
GRP Analytics

GRP Analytics, located in Workshop management > Tool use history > GRP Analytics, is a functionality that allows the Administrator and Senior technicians to obtain statistical data on the use of Jaltest either from one device or from several devices in GRP Enterprise, as well as from each of the users.

Once the date range is selected, the date can be grouped by day, week or month.



Which data are displayed?



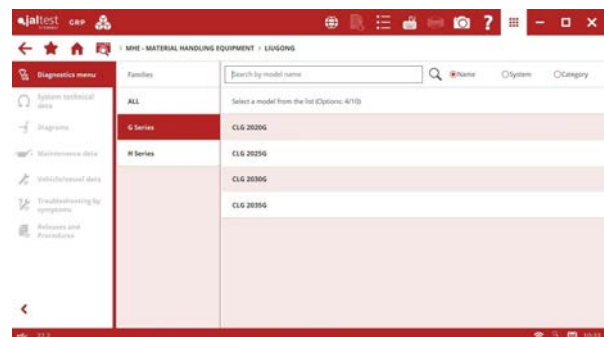
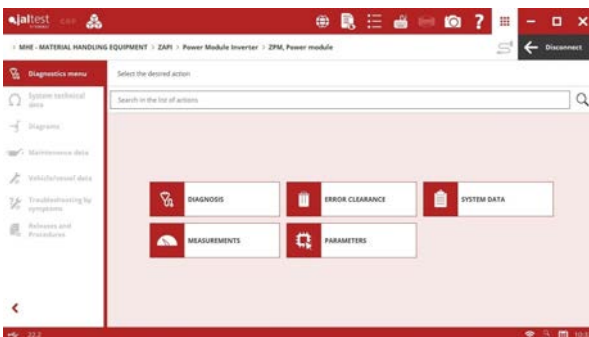
BRANDS AND MODELS

Take into account that this document is only a summary of the most relevant information of this new version. For further information, please visit [Jaltest Report](#).

Some of the new models and brands in Jaltest are listed below.

In this version, it is important to note that **ZAPI** brand has been added. A new **JDC 564.9** cable is required to connect to the **ZPM** power module of this manufacturer.

In addition, the number of models in the following brands has increased: **CATERPILLAR** (with the new **JDC 565.9** cable), **JUNGHEINRICH**, **LINDE** and **LIUGONG**.



DIAGNOSTICS AND SYSTEMS

BT

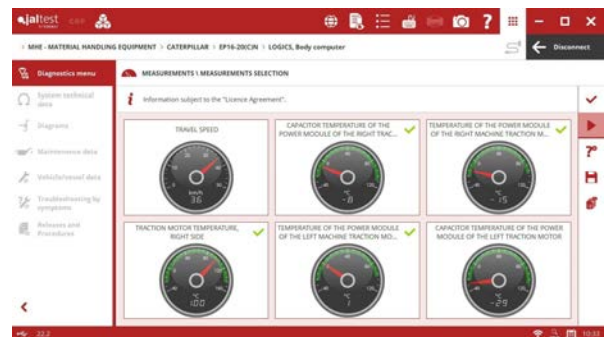
⊕ New **JDC 562A** diagnostics cable.

⊕ **ACH** control system of the hydraulic power module and **ATC** power management system for traction.

In addition, new wiring diagram configurations in systems of **Reflex Serie B** and **Reflex Serie E** models.

CATERPILLAR

⊕ **LOGICS** central computer (*on RS232*) for electric forklifts.



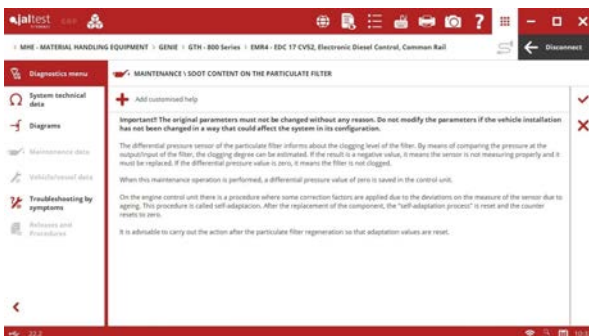
GENIE

EMR4-EDC 17 CV52 engine control system, throttle valve check in the intake manifold, diesel particulate filter replacement and soot content reset.

HAULOTTE

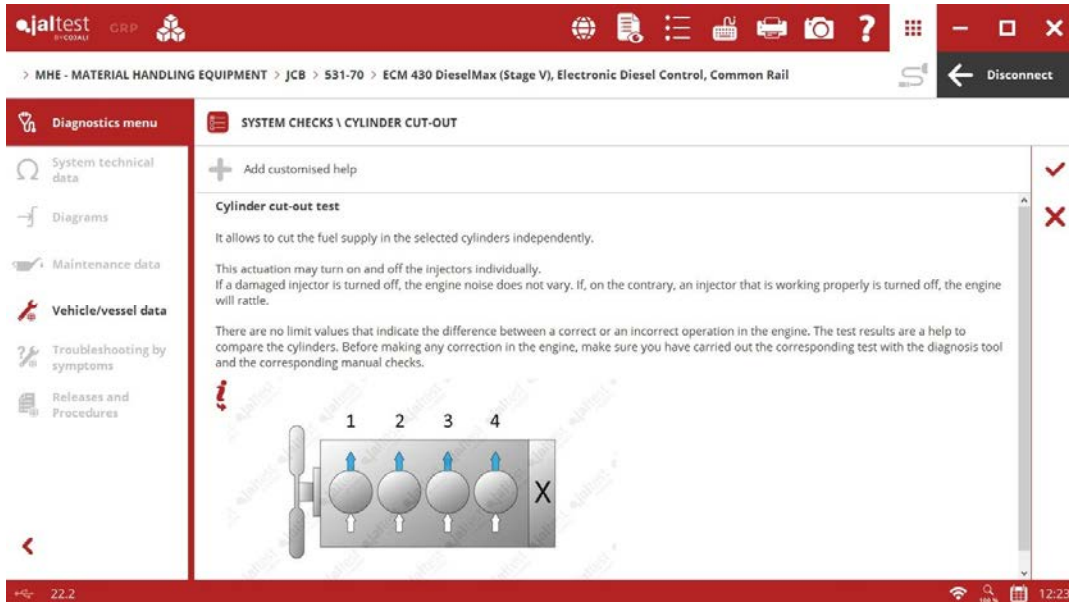
Control system of the hydraulic system (*on CAN*), maintenance interval reset.

ECM Kohler Stage V engine control system, throttle valve check in the intake manifold, diesel particulate filter replacement and engine shutdown.



JCB

⊕ **DieselMax 430 Stage V** engine control system that includes the cylinder cut-out.

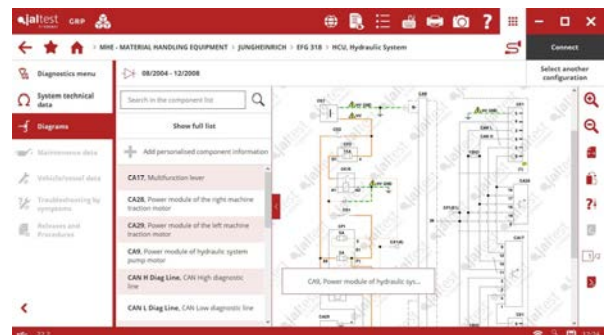
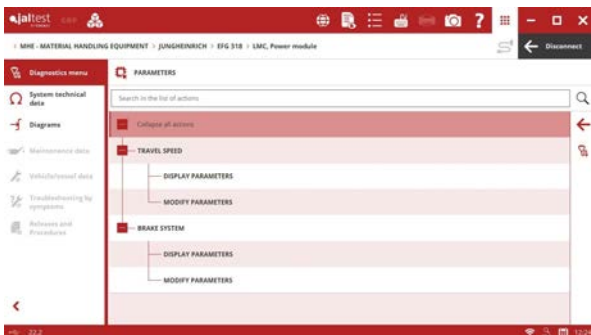


JUNGHEINRICH

LMC power management system for traction, parameter configuration of the travel speed and brake system.

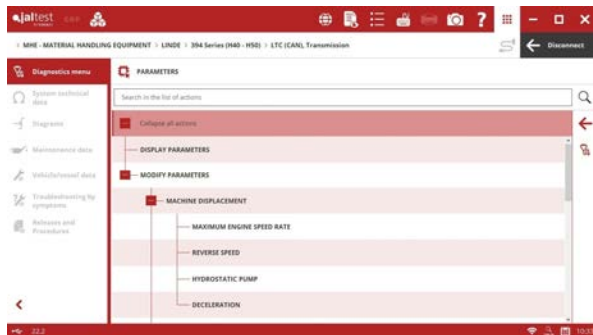
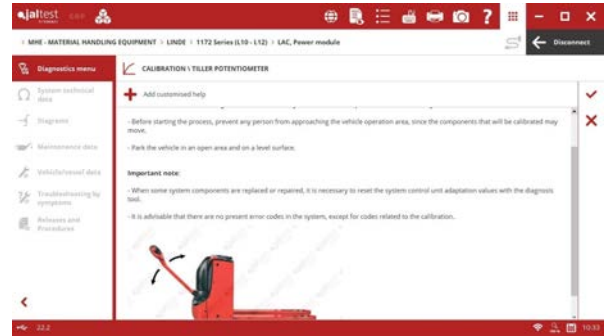
HCU control system of the hydraulic system, parameter configuration of the auxiliary spool valves, mast and hydraulic pump, etc.

In addition, new wiring diagram configurations available for **EFG Series** forklifts.



LINDE

⊕ **LAC** power management system for traction that includes advanced functions of parameter configuration and calibrations such as the tiller potentiometer calibration and the accelerator calibration.



⊕ **LTC** traction control system for models of internal combustion that includes advanced functions of parameter configuration of the machine displacement and the driving mode.

MITSUBISHI

⊕ New **JDC 565.9** diagnostics cable.

⊕ **LOGICS** central computer (on RS232) for electric forklifts.



STILL

MCU central computer for first generation forklifts, parameter configuration of the hydraulic system and the machine displacement, driving programme modification, etc.

⊕ **MCU** central computer (*on RS232*) for latest generation forklifts that includes advanced functions such as the control lever calibration or the steering angle sensor calibration, among others.

