



INNOVATIONS 22.2

SOFTWARE INNOVATIONS

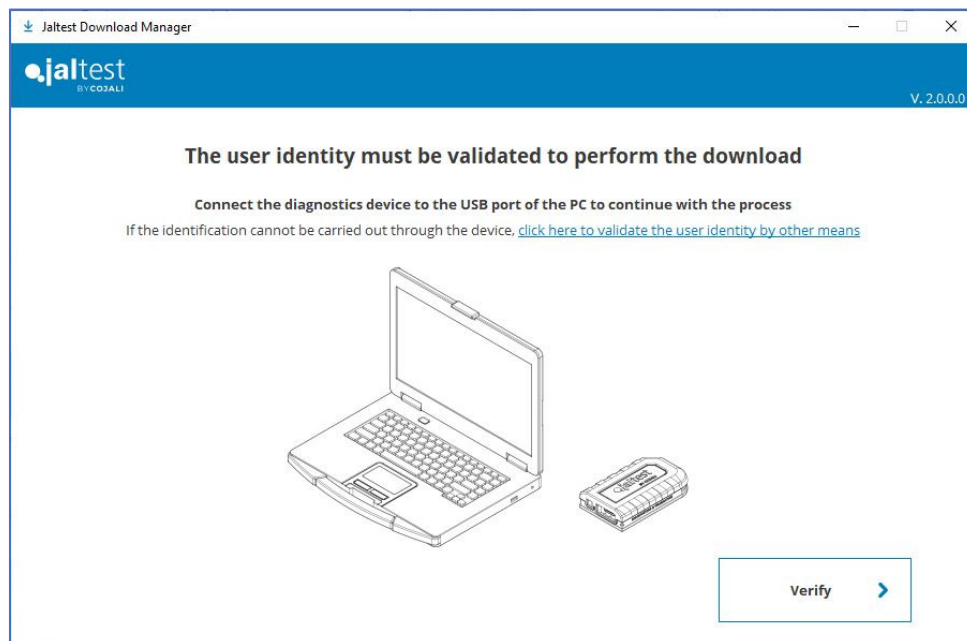
The new software version Jaltest 22.2 once again offers more improvements and innovations that consolidate this tool as a benchmark in multibrand diagnostics for commercial vehicles, agricultural equipment, OHW equipment, material handling equipment and vessels.

From this version, products with licence in force and expired licence can be combined. All clients with licence in force for several products (CV, AGV, OHW...) from 1st January 2022 may renew only some of them without losing access to the rest. The following considerations must be taken into account:

- The renewed products will expire on the same expiration date.
- This behaviour is available from 22.2 version. Please note that access to non-renewed products will be removed with older versions.
- Once using 22.2 Jaltest version or subsequent versions, the diagnostics coverage of non-renewed products will be locked in the version to which you were entitled according to their expiration date.
- The behaviour for the access to non-renewed products will be the same as for products with expired license (currently without access to technical information).

Jaltest Download Manager

Jaltest Download Manager is publicly available to all users on the web. This programme manages the downloads of the versions that correspond to each Jaltest user. It may be useful for first installations when purchasing the device.



Unknown variants resolution through other brand models

If the reference of a system is unknown, the user will be able to search if any system of the same type contains a variant with the same identifier. Only systems within models of the same brand will be searched.

If the user accepts, the models that contain the found system will be displayed and, after selecting any of them, the system to which the variant belongs will be preselected.

How to interpret the wiring diagrams of the model?

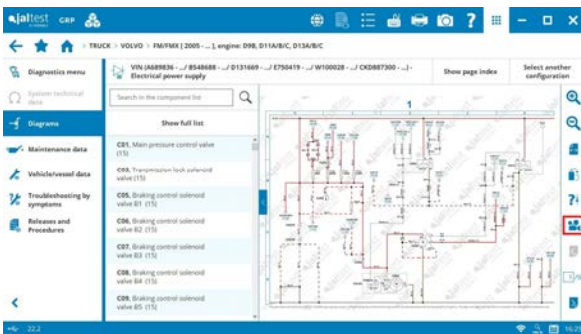
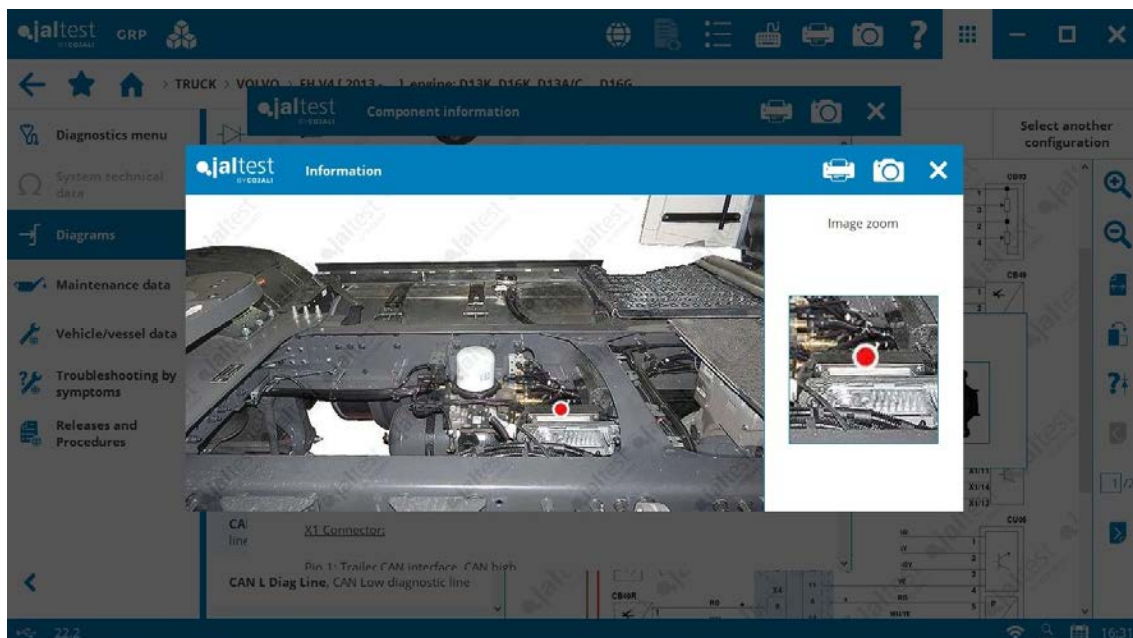


Image zoom



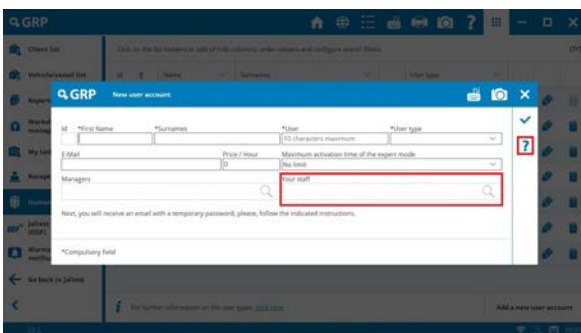
Other functionalities

- Sending of audios through Jaltest Feedback.
- Expert mode timer. In GRP, it will be managed by the administrator for each of the users.
- Displaying of measurement indicators in steps on table.
- Displaying of interactions in SYSTEM DISPLAY visualisations in the steps of an action.
- SMART guides improvements.

GRP

User management improvement

The Service managers can be in charge of a customised group of users, therefore in GRP Enterprise they can manage work orders and tasks only for this group. The management is performed by the Administrator through the Human Resources menu. In addition, in this same menu, a reporting table with the permissions for the different GRP user roles is included.



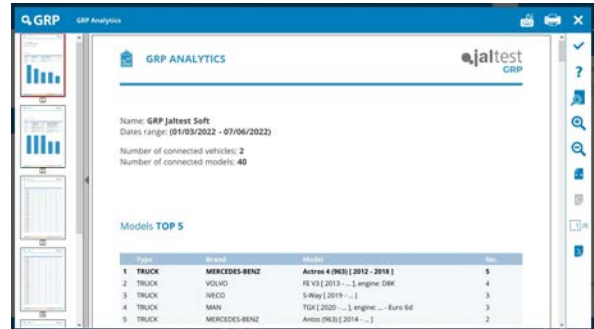
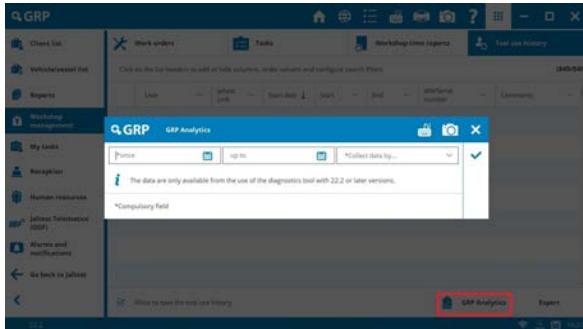
	Administrator	Service manager	Senior technician	Technician	Reception	From
Expert Mode	✓	✓	✓			GRP Basic
Client list	✓	✓	✓	✓	✓	GRP Basic
Vehicle/vessel list	✓	✓	✓	✓	✓	GRP Basic
Reports	✓	✓	✓	✓	✓	GRP Basic
Workshop management	✓	✓	✓	✓		GRP Synchro
My tasks	✓	✓	✓	✓	✓	GRP Enterprise
Reception	✓	✓	✓		✓	GRP Enterprise
Human resources	✓					GRP Synchro
Jaltest Telematics (DOT)	✓	✓	✓			GRP Synchro

Attention! It is important to note that all GRP users previously created as “Service manager” change to “Senior technician” in 22.2, maintaining the same features. The “Service manager” user can now access the same menus and settings of the programme than the “Administrator” user, except for the Human Resources menu. In this way, all management will not be in the hands of the “Administrator” user.

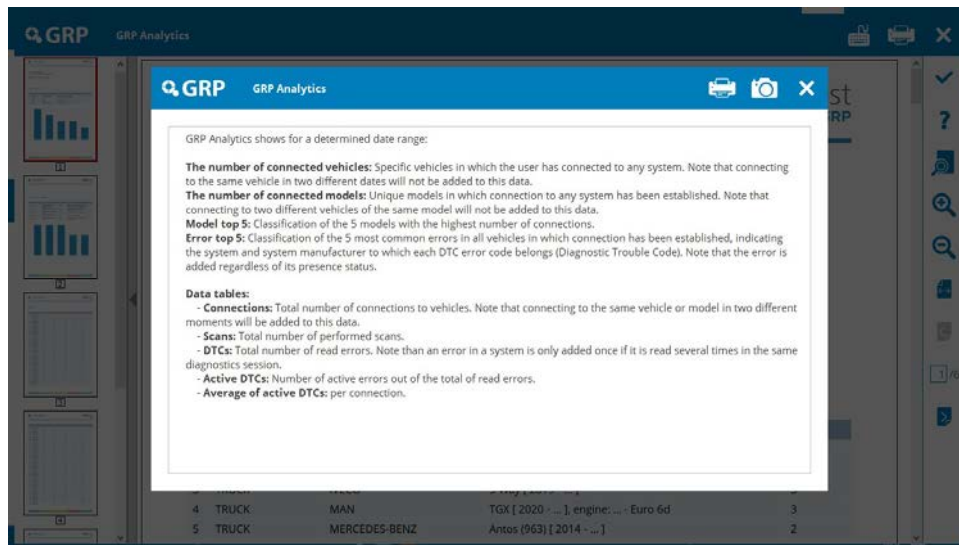
GRP Analytics

GRP Analytics, located in Workshop management > Tool use history > GRP Analytics, is a functionality that allows the Administrator and Senior technicians to obtain statistical data on the use of Jaltest either from one device or from several devices in GRP Enterprise, as well as from each of the users.

Once the date range is selected, the date can be grouped by day, week or month.



Which data are displayed?



BRANDS AND MODELS

Take into account that this document is only a summary of the most relevant information of this new version. For further information, please visit Jaltest Report.

Some of the new models of this version are listed below.

CITRÖEN

e-Jumpy (K0)

FORD

F-MAX, engine: Euro 6d [2019 - ...]

MAN

eTGE

MITSUBISHI FUSO

Fighter, engine: 4M50

OPEL

Vivaro-e (C)

PEUGEOT

e-Expert (K0)

RENAULT

Kangoo ZE Power+

Master e-Tech

TOYOTA

Proace Electric (K0)

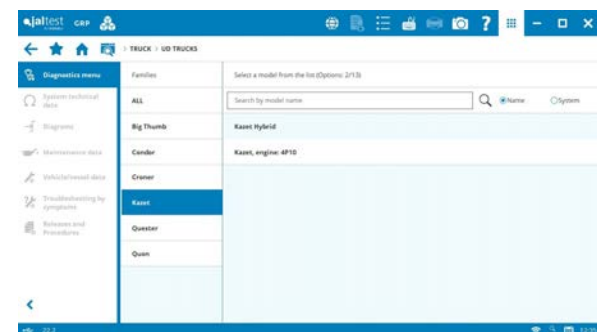
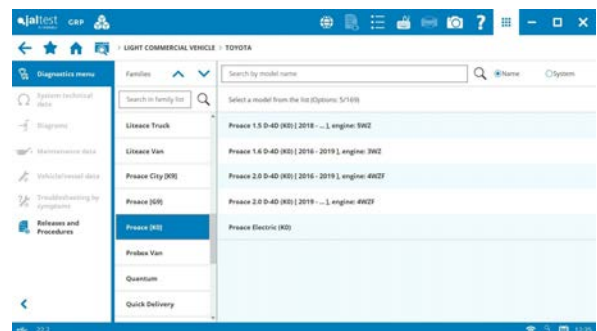
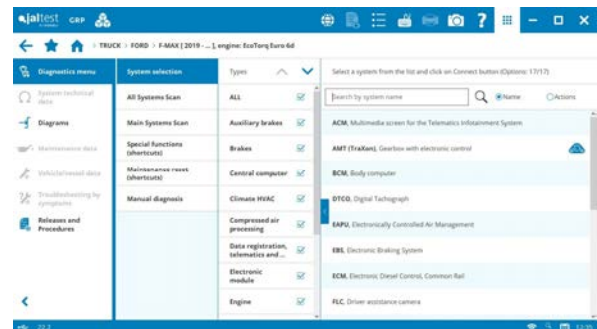
UD TRUCKS

Condor, engine: 4HK1

Kazet Hybrid

VOKSWAGEN

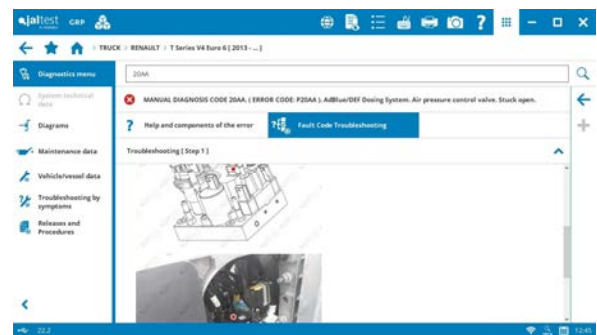
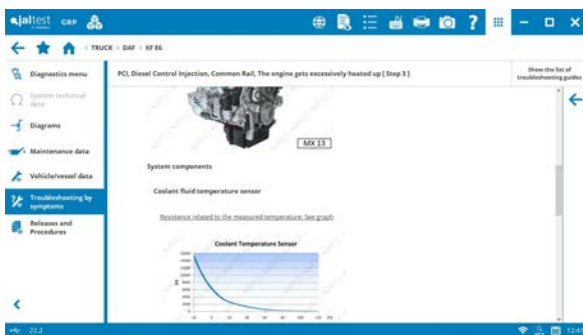
e-Crafter (SXB)



DIAGNOSTICS AND SYSTEMS

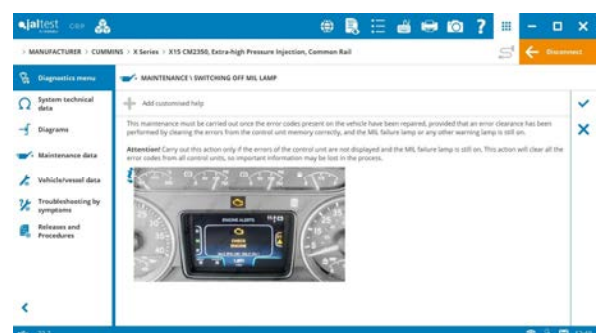
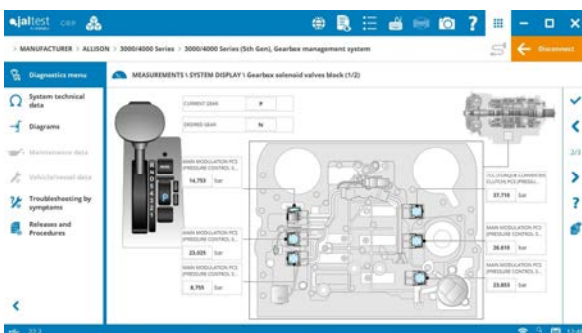
Take into account that this document is only a summary of the most relevant information of this new version. For further information, please visit Jaltest Report.

Overall, new technical information and troubleshooting guides (now **SMART guides**) by symptoms and of the most common error codes in the workshop thanks to the communication channels with clients such as the technical support offered by the project, training, Jaltest Feedback and “Product improvement” option.



In addition, new dynamic **System Display** available to help better understand the performance of the systems and processes, such as the gear shift in **Allison 4th & 5th Gen.**

Extended coverage in all vehicle and manufacturer brands. For example, the maintenance process to switch off the MIL lamp has been developed in new **CUMMINS** systems. In addition, new advanced functions have been developed in the **ISF/F 3.8 CM2350** system, including cylinder cut-out and diesel particulate filter regeneration.



TRUCK

DAF

Time saving in the system scan in **XF E6** model.

⊕ **DSRC** Data log (Dedicated Short-Range Communications) in E6 models.

New procedures in several engine types of the brand such as “*Change the fuel filter*” as well as “*Distribution phasing*” in **MX11 Euro 6 [2017 - ...]** engine types or “*Clean/rinse the fuel system*” in **MX13 [2006 - ...]** engine types, among others.

IVECO

SGW security module unlocking in models made from 2019, allowing for advanced diagnostics functions.

Manual diagnostics through the instrument cluster in T-Way [2020- ...] model.

New procedures in several engine types of the brand such as “*Distribution phasing*” in **F2C GE611** engine types or “*Replace the diesel particulate filter (DPF)*” in **F3G FE611** engine types. **F3G FL611, F3J FE611** and **F3J FL611**, among others.

MAN

In vehicles with **TG2 technology**:

EDC 17 engine control system, fan activation.

NoNOx exhaust gas aftertreatment system, AdBlue/DEF module replacement.

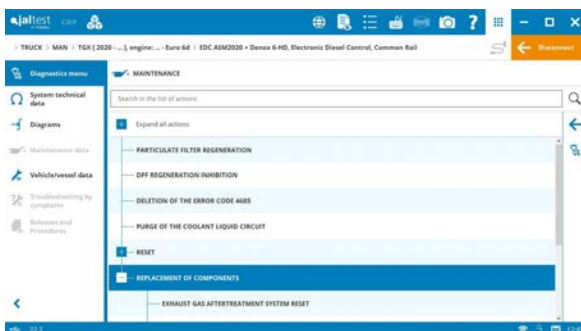
In vehicles with **TG3 technology**:

⊕ ADAS safety systems, **SRRRv** and **SRRRh lateral radars**.

⊕ **EAS** electro-hydraulic steering system.

⊕ **CSS** safety restraint system.

⊕ **IRC** remote controller to control cabin functions from bed.



EDC ASM2020 engine control system in Euro 6d vehicles, AdBlue/DEF tank heater valve activation, coolant fluid pump check, new resets and error code clearance 4685, NOx sensor replacement, etc.

MERCEDES-BENZ

In vehicles with **MB5 technology**:

ACM3 exhaust gas aftertreatment system, NOX correction factor reset.

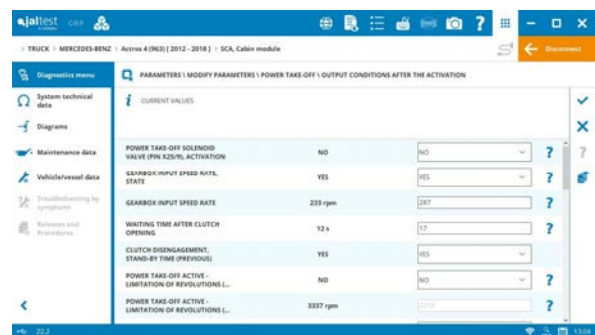
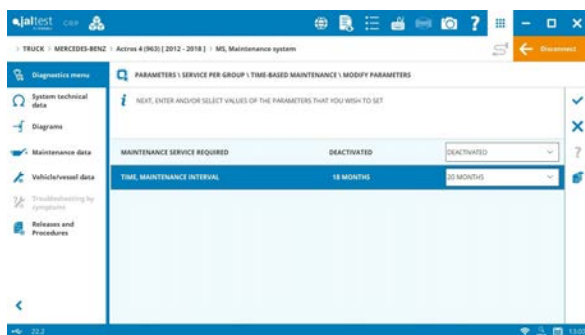
ASAM wiring diagram configuration of the advanced cabin module in **Econic 5** model.

In vehicles with **MB4 technology**:

ACM exhaust gas aftertreatment system, fuel system check, AdBlue/DEF consumption counter reset, NOX correction factor reset, AdBlue/DEF tank capacity configuration.

MS maintenance system, configuration of all vehicle maintenance services.

SCA cabin module, PTO parameter modification.



CPC common powertrain controller, vehicle starting gear configuration.

PSM parameterizable special module, RPM configuration.

TPM 01T tyre pressure monitoring system, configuration of the wheel sensor identification codes.

Use of **50105135 – WRENCH FOR HEXAGONAL NUT, Dr. 3/8”, 46 mm** Jaltest Tools reference in the “Change AdBlue/DEF filter” procedures both for **Bluetec** technology and **ACM Euro 6**.

In vehicles with **MB2 technology**:

MR OM460 Euro4/5 engine control system, unitary pump replacement of the injection system: pump-pipe-injector.

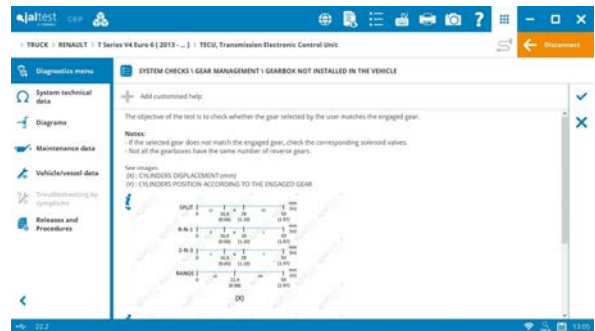
RENAULT

Diagrams by model in **Midlum** and **Premium**.

In vehicles with **V3/V4 technology**:

⊕ **VECU 5** vehicle control unit.

TECU transmission, gearbox verification checks (without installing on vehicle).



SCANIA

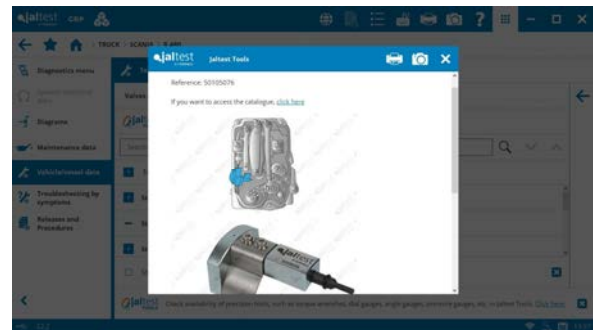
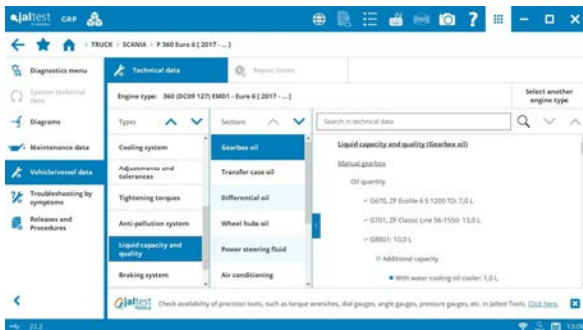
⊕ **EQU** battery equalizer.

EEC3 exhaust gas aftertreatment system, NOx sensor check.

TMS2 transmission, configuration of the limitation parameters with active power take-off, accelerometer adjustment test, etc.

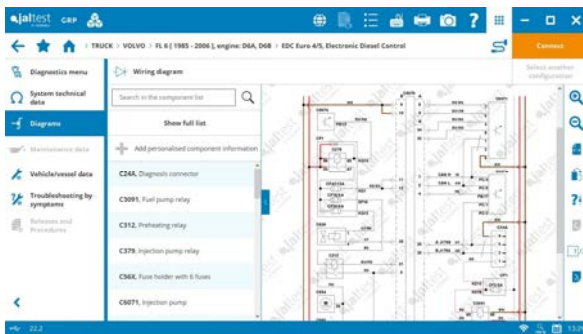
New vehicle technical information in **New G, P, R** and **S Series Euro 6** models and procedures such as “*Valve adjustment*” in **DC07 CRIN Euro 6** engine type.

Use of **50105076** and **50105080 – TOOL TO ADJUST THE INJECTOR** Jaltest Tools references in the “*Valve adjustment*” procedures in **PDE** engines.



Note: From this version, a hyperlink to Jaltest Tools catalogue appears in any of the vehicle technical data.

VOLVO



Wiring diagram configuration of the **Euro 4/5** engine control system in **FL6** model.

In vehicles with **V3/V4 technology**:

⊕ **SRS V3** Airbag.

ACM exhaust gas aftertreatment system, AdBlue/DEF pressure build-up and Retarder pressure check.

VMCU V4 vehicle control system, configuration parameters of the PTO and working light.

RCIOM rear module, checks and suspension calibration in 8x4 vehicles.

BUS

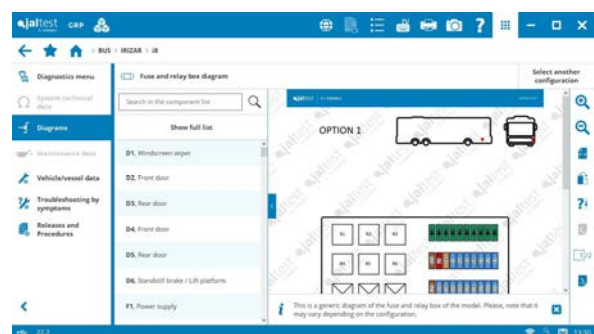
Wabco IVTM tyre pressure monitoring system, copy/paste parameters of the front module, system configuration and warning lamp performance configuration. Diagnostics in the background.

EDC 17 CV41 FPT engine control system in models of **GOLDEN DRAGON, ISUZU, MENARINIBUS, SOR, TEMSA** brands, etc., operation data development, activations, checks and diesel particulate filter regeneration.

Spheros S and **VALEO plus** auxiliary heater models in **Webasto Thermo** system in models of **MAN** brand. In addition, new engine types with technical data available, such as **D2676 LOH35 Euro 6**.

New technical information and wiring diagram configuration in models of **IRIZAR** brand.

Extended system coverage in models such as **Phoenix Euro 6** of **TATRA** or **TDX 20/21** of **VAN HOOL**.



TRAILER

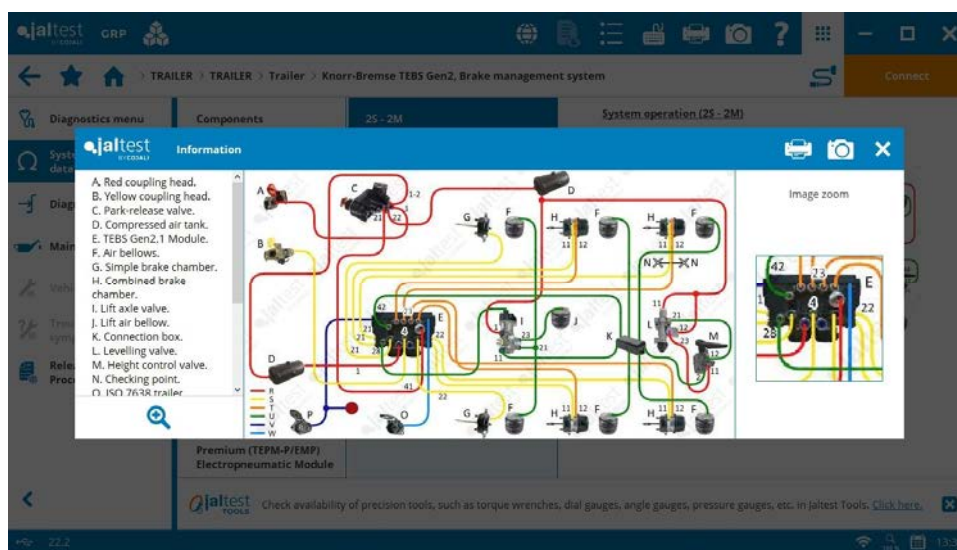
New SMART guides in Trailer EBS systems.

CARRIER

Engine type technical data of **Carrier Supra**, **Carrier X Series** and **Carrier ComfortPro Diesel** refrigeration systems and maintenance services of refrigeration units.

KNORR-BREMSE

TEBS Gen 2 brake system, operating diagrams for 2S/2M and 4S/3M configurations.



WABCO

Extended coverage in the new **E6 generation** of the **Trailer EBS E** brake system, copy/paste parameters, end-of-line test, etc.

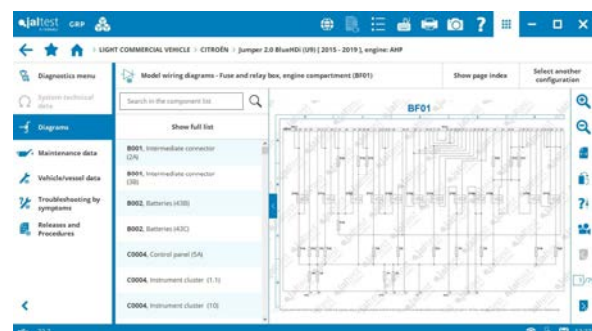
LIGHT COMMERCIAL VEHICLE

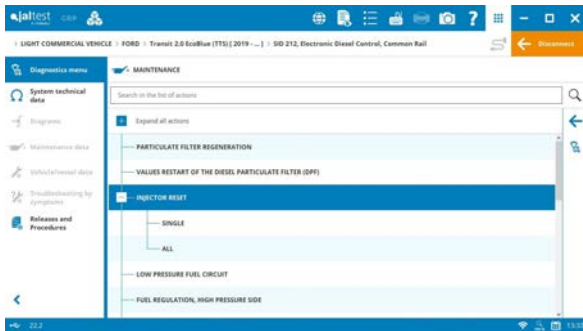
CITRÖEN

Wiring diagram by model in **Jumper (U9)**.

FIAT

CFC448 automatic transmission in **Ducato** models, advanced functions such as clutch calibration.





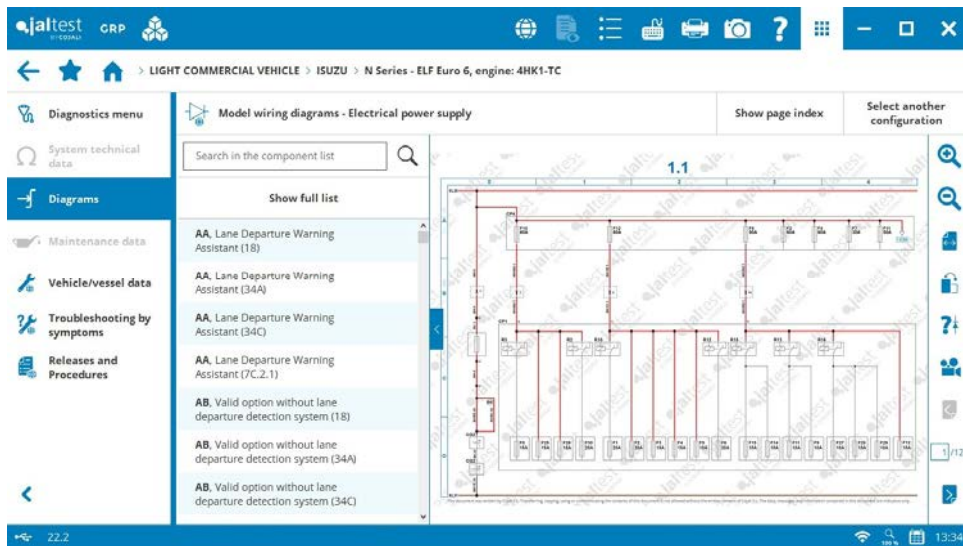
SGW security module unlocking in **Doblo 1.6 Cargo/Multijet (263) [2019 - ...] engine** model: **55280444, 940 C1.000** allowing for advanced diagnostics functions.

FORD

Extended coverage in **SID 212** engine control system.

ISUZU

Model wiring diagrams in Euro 6 vehicles.



IVECO

SGW security module unlocking in **Daily** models made from 2019, allowing for advanced diagnostics functions.

MERCEDES-BENZ

Extended coverage in **MRD1 OM654** engine control system in **Sprinter 907/910** and **Vito [447]** models.

