



## INNOVATIONS 22.2

# SOFTWARE INNOVATIONS

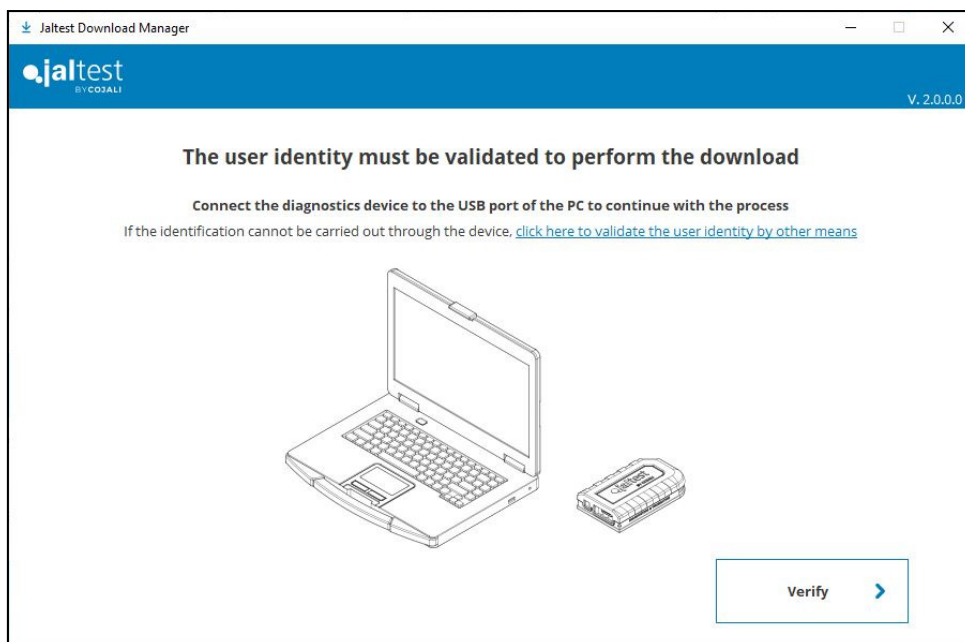
The new software version Jaltest 22.2 once again offers more improvements and innovations that consolidate this tool as a benchmark in multibrand diagnostics for commercial vehicles, agricultural equipment, OHW equipment, material handling equipment and vessels.

From this version, products with licence in force and expired licence can be combined. All clients with licence in force for several products (CV, AGV, MHE...) from 1st January 2022 may renew only some of them without losing access to the rest. The following considerations must be taken into account:

- The renewed products will expire on the same expiration date.
- This behaviour is available from 22.2 version. Please note that access to non-renewed products will be removed with older versions.
- Once using 22.2 Jaltest version or subsequent versions, the diagnostics coverage of non-renewed products will be locked in the version to which you were entitled according to their expiration date.
- The behaviour for the access to non-renewed products will be the same as for products with expired license (currently without access to technical information).

## Jaltest Download Manager

Jaltest Download Manager is publicly available to all users on the web. This programme manages the downloads of the versions that correspond to each Jaltest user. It may be useful for first installations when purchasing the device.

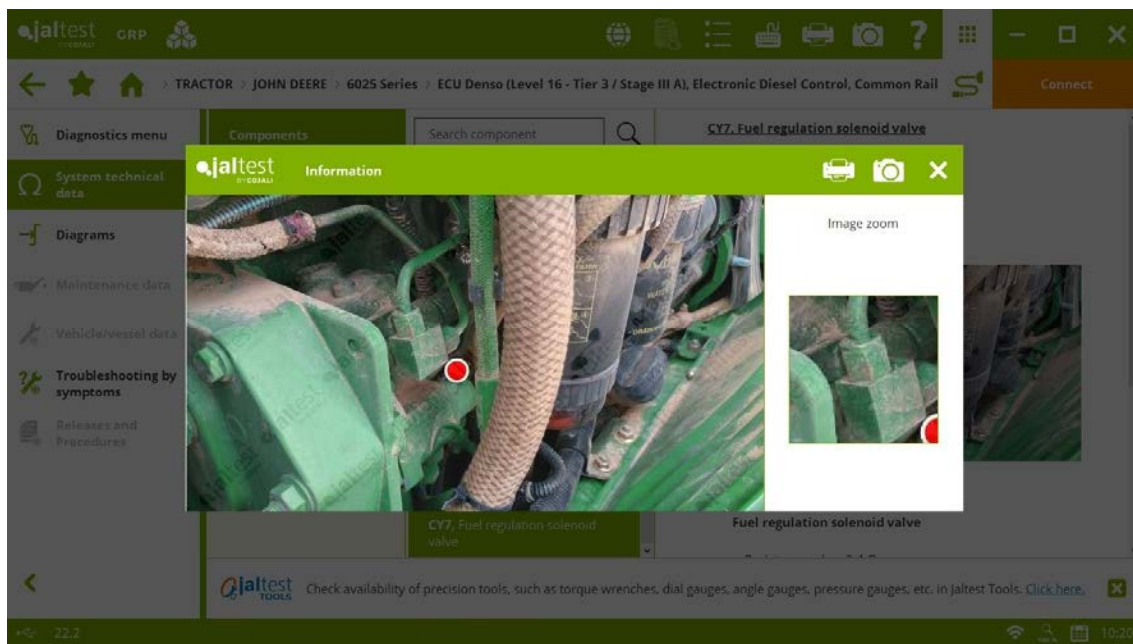


## Unknown variants resolution through other brand models

If the reference of a system is unknown, the user will be able to search if any system of the same type contains a variant with the same identifier. Only systems within models of the same brand will be searched.

If the user accepts, the models that contain the found system will be displayed and, after selecting any of them, the system to which the variant belongs will be preselected.

## Image zoom



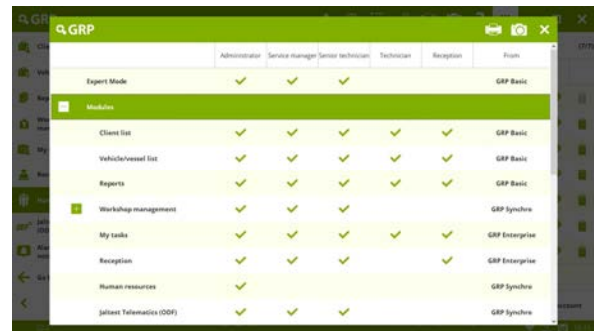
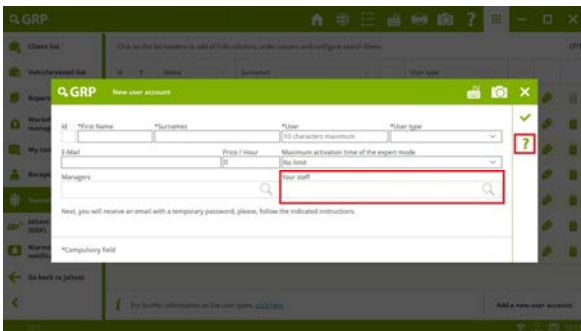
## Other functionalities

- Sending of audios through Jaltest Feedback.
- Expert mode timer. In GRP, it will be managed by the administrator for each of the users.
- Displaying of measurement indicators in steps on table.
- Displaying of interactions in SYSTEM DISPLAY visualisations in the steps of an action.
- SMART guides improvements.

# GRP

## User management improvement

The Service managers can be in charge of a customised group of users, therefore in GRP Enterprise they can manage work orders and tasks only for this group. The management is performed by the Administrator through the Human Resources menu. In addition, in this same menu, a reporting table with the permissions for the different GRP user roles is included.

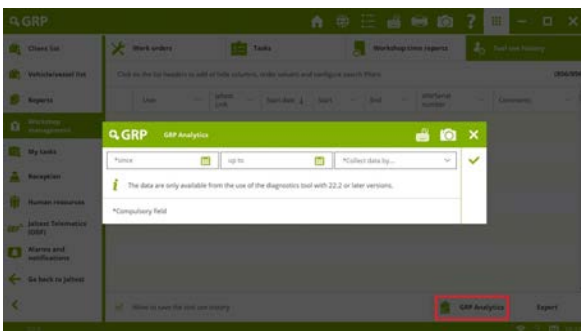


**Attention!** It is important to note that all GRP users previously created as “Service manager” change to “Senior technician” in 22.2, maintaining the same features. The “Service manager” user can now access the same menus and settings of the programme than the “Administrator” user, except for the Human Resources menu. In this way, all management will not be in the hands of the “Administrator” user.

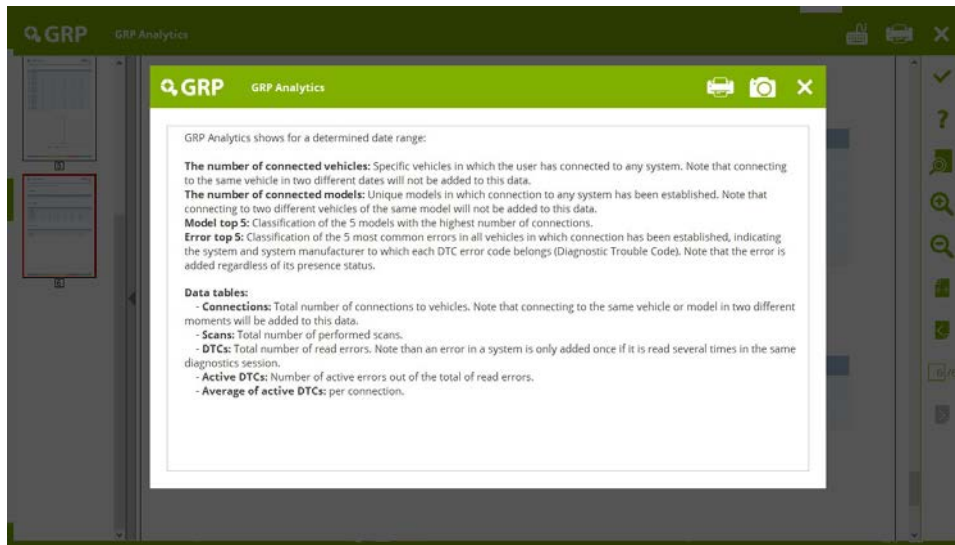
## GRP Analytics

GRP Analytics, located in Workshop management > Tool use history > GRP Analytics, is a functionality that allows the Administrator and Senior technicians to obtain statistical data on the use of Jaltest either from one device or from several devices in GRP Enterprise, as well as from each of the users.

Once the date range is selected, the date can be grouped by day, week or month.



Which data are displayed?



## BRANDS AND MODELS

Take into account that this document is only a summary of the most relevant information of this new version. For further information, please visit [Jaltest Report](#).

Some of the new models and brands in Jaltest are listed below.

### TRACTOR

In this version, it is important to note that **BOBCAT** brand has been added.

#### CASE IH

Farmall A Series, engine: Interim Tier 4/Stage IIIB

Farmall Series, engine: Tier 5/Stage V

Luxxum Series, engine: Tier 5/Stage V

#### CHALLENGER

MT 700 Series, engine: Tier 5/Stage V

#### FENDT

1000 Vario MT Series, engine: Final Tier 4/Stage IV

## KIOTI

CK, DK, DX, NX and RX Series

## KUBOTA

M4N Series  
M6H Series  
L3 and L4 Series

## MASSEY FERGUSON

2600 H Series

## NEW HOLLAND

T3LP Series, engine: Tier 5/Stage V  
T4 V/N/F/LP Series, engine: Tier 5/Stage V  
T5 Series - Electro Command, engine: Tier 5/Stage V

## STEYR

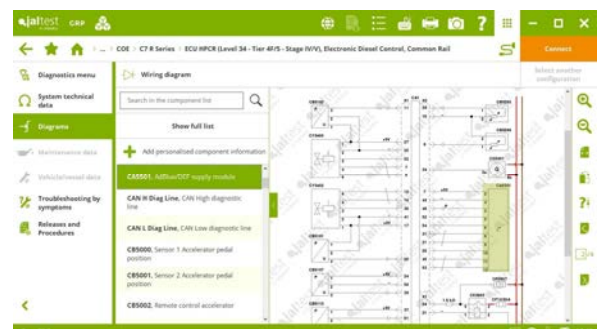
Kompakt Series, engine: Tier 5/ Stage V  
MULTI Series, engine: Tier 5 / Stage V

## VALTRA

A 104 (AC56.5)  
A 134 (AC56.5)  
A 84S  
A 94  
BH Series  
N 141LS (AC11.2)  
T 191LS (AC11.2)  
T 195 CVT  
T 250 CVT

## HARVEST EQUIPMENT

In this version, the following brands have been added: **COE** (Harvester of nuts and fruit trees) and **GUARESÍ** (Tomato harvester).



## CASE IH

Cotton harvester:

- Cotton Express 420
- Cotton Express 630
- CPX 610
- Module Express 625

## GREGOIRE

**GL6.4** and **GS6.4** olive and grape harvesters.

## JOHN-DEERE

**CH600 Series** sugar cane harvester.

# SELF-PROPELLED AND TRAILING IMPLEMENT

## STORTI

DMUW Terrier Series

Dobermann SW EVO Series

Dobermann SW GP EVO Series

Dunker Series

Greyhound Series

Labrador Series

Pointer EVO Series

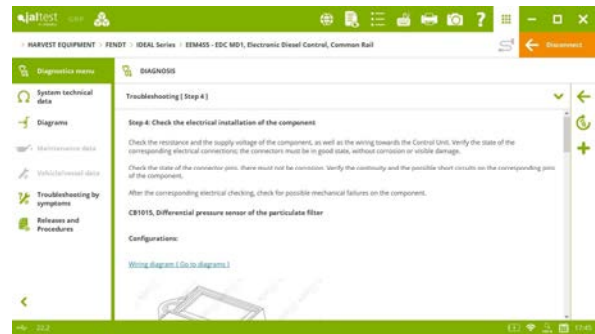
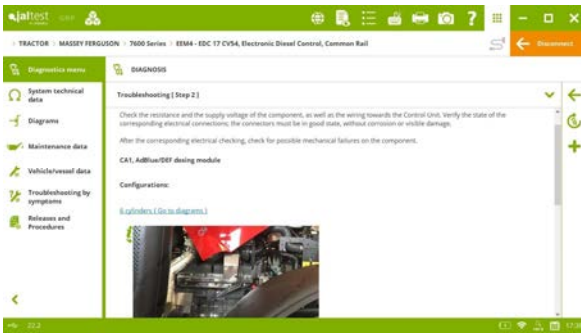
# DIAGNOSTICS AND SYSTEMS

---

Take into account that this document is only a summary of the most relevant information of this new version. For further information, please visit Jaltest Report.

New developments in **Perkins** engine control systems that apply to several brands of all types of agricultural vehicles. For example, the cylinder cut-out of the **ECM** system in **1100D** engines, or the activations, the injection rail pressure check and the injector coding of the **ECM** (*on SAE J1939*) system in **404D/404E** engines.

New error code troubleshooting guides of the **EEM4 – EDC 17CV54 Sisu** engine control system. **EEM4F – EDC 17 CV41** and **EEM4S5 – EDC MD1**.



## TRACTOR

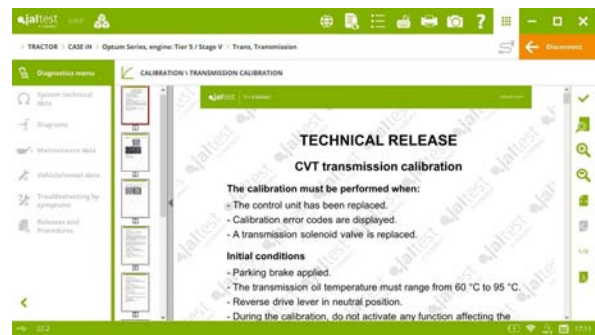
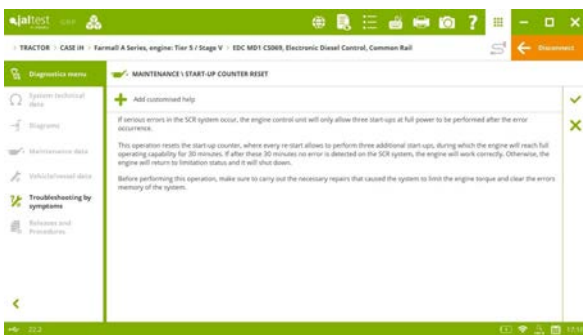
**ECM Kohler Tier 5/Stage V** engine control system in brands such as **ARBOS, LANDINI, McCORMICK** or **PASQUALI**, among others, throttle valve check in the intake manifold and engine shutdown test. Reset of the Pressure Relief Valve (PRV) in **Kohler Final Tier 4/Stage IV** engines.

### CASE IH

In **CNH group** brands, the following features are of particular interest:

⊕ **EDC MDICS069** engine control system.

Calibration procedures of the **SFA** front suspension control system, the **Trans** transmission and the **RPTO** rear power take-off.



## CHALLENGER

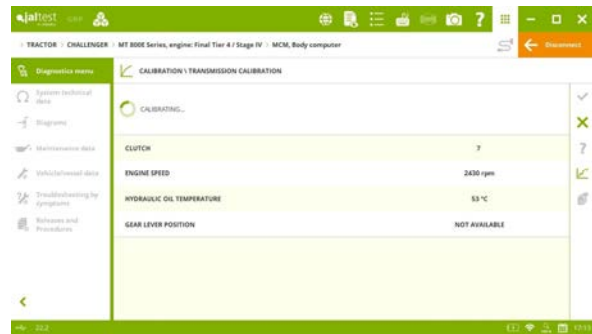
**EEM4 - EDC 17 CV41** engine control system in **MT 800E Series** models, aftertreatment system error clearance.

**C-15** and **C-18** (on SAE J1939) **Caterpillar** engine control systems, air dosing check and heater check of the exhaust gas aftertreatment system.



**MCM** central computer, transmission calibration in **MT 700D Series, MT 700E Series** and **MT800E Series** models.

New technical data, wiring diagram configurations and images in the **AUTOPOWER IV** system in **MT 400B Series, engine** models: **Tier 2/Stage II**.



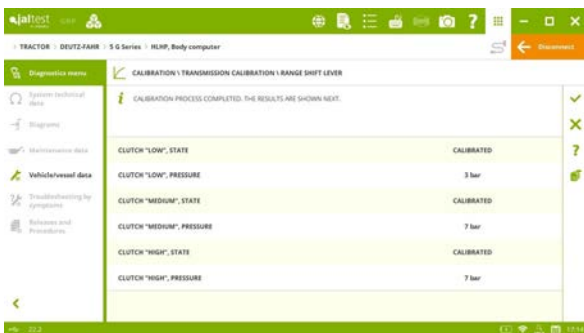
## CLAAS

**HLHP** central computer in the **Atos (A78/A79/A98/A99)** model, calibrations.

**C-15** and **C-18** (on SAE J1939) **Caterpillar** engine control systems, air dosing check and heater check of the exhaust gas aftertreatment system.

## DEUTZ-FAHR

Calibrations and maintenance resets of the transmission oil change, the transmission oil filter, and the spool valve oil change in the **SECU** system in **6 Series** and **7 Series** models. The coverage extend will depend on the system model and variant.



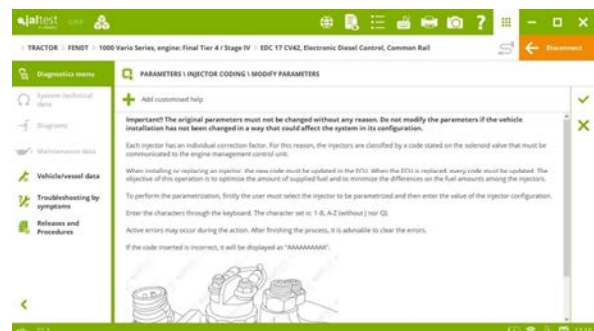
**HLHP** central computer in the **5G Series** model, calibrations.

Vehicle technical data in **5P Series** models.

## FENDT

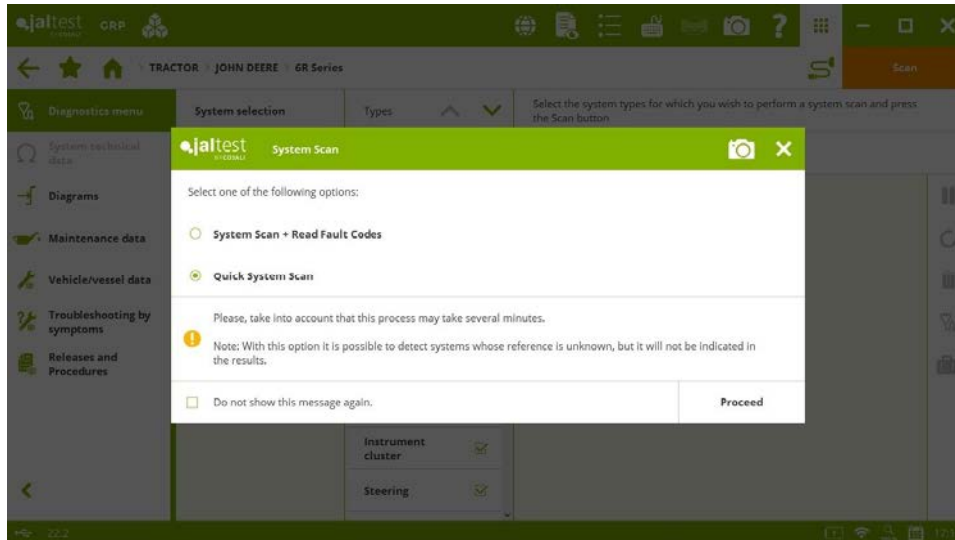
**MAN EDC 17 CV42** engine control system in **1000 Vario Series** and **900 Vario Series (GEN6)** models, injector coding and AdBlue/DEF filter replacement.

Maintenance interval reset in the instrument cluster in new **Final Tier 4/ Stage IV** models.



## JOHN DEERE

Improved quick system scan, achieving times of less than 1 minute.



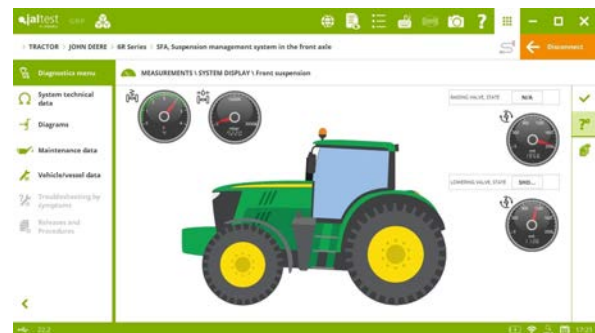
**EDC Denso Yanmar** engine control system in **3E Series, 3R Series, 4M Series** and **4R Series** models, Diesel Oxidation Catalyst replacement (DOC).

**HCC** hydraulic lift in **5R Series** models, system calibration.

**HCC** hydraulic lift in **8030 Series** models, parameter configuration.

**ATC** automatic heating system in **9R Series** models, climate control calibration and parameter modification.

Dynamic System Display in the **SFA** front suspension and the **CSC** cabin control systems in **6M Series, 6R Series** and **7R Series** models.



In addition, new wiring diagram configurations in the **QSX 15 CM2350 Cummins** engine control system in **9R Series** models and new technical data of the **8R Series** model with **6090H (Level 33) – Final Tier 4/Stage IV** engine.

## KIOTI

⊕ **EDC Kioti** engine control system.

## LAMBORGHINI

Maintenance resets of the transmission oil change, the transmission oil filter, and the spool valve oil change in the **SECU** system in **Mach Series** models.

## LINDNER

New wiring diagram configurations in the **Perkins** engine control systems in **Geotrac** and **Lintrac** models.

## MASSEY FERGUSON

⊕ **Simpson EEM** engine control system.

In addition, new wiring diagram configurations in the **Autotronic 5 – Dyna 4 GPA 20/GPA 50** control system in **5400 Series** models.

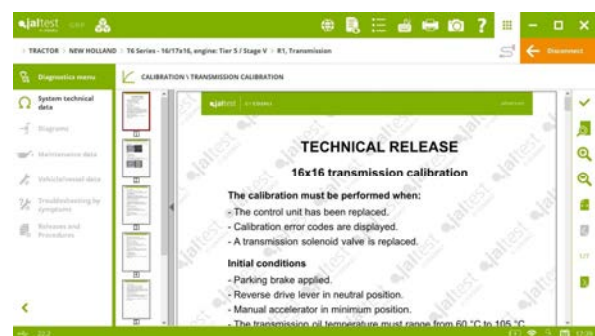
## NEW HOLLAND

In **CNH group** brands, the following features are of particular interest:

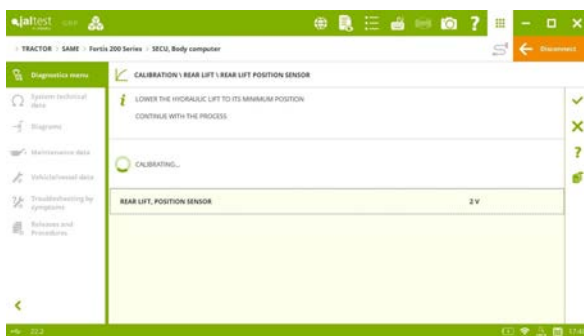
⊕ **RI** transmission module that includes the calibration procedure.

**BRK** brake control system, air purge.

**DEC CVT** transmission, calibration data modification.



## SAME



Calibrations in the **SECU** system in **Fortis 100 Series**, **Fortis 100.4 Series**, etc. models. The coverage extend will depend on the system model and variant. For example, the calibration of the Powershift and the calibrations of the rear lift position sensor and the hitch draft sensor are in the **Fortis 200 Series** model.

## STEYR

In **CNH group** brands, the following features are of particular interest:

⊕ **RI** transmission module that includes the calibration procedure.

Calibration procedures of the **TCU2** transmission and the **EDC** hydraulic lift.

## VALTRA

Maintenance service reset in several brand models.

## HARVEST EQUIPMENT

**EMS V3** Volvo engine control system installed in several harvest equipment brands such as **AGRIFAC, HOLMER, MTS-SANDEI**, etc. and in other brands of **SELF-PROPELLED AND TRAILING IMPLEMENT**, preheating activations, heat preservation check and parameter modification concerning the engine heating.

New vehicle technical data and wiring diagram configurations in brands such as **P. BARIGELLI & C, PELLENC, ROSTSELMASH**, etc.

### CLAAS

**C-9.3** (on SAE J1939) **Caterpillar** engine control system in **Lexion Series** and **Tucano Series** models, air dosing check and heater check of the exhaust gas aftertreatment system.

In addition, new wiring diagram configurations in the **1204F** (on SAE J1939) **Perkins** control system in **Avero Series** models.

### FRANZ KLEINE

**EDC Volvo** engine control system, idle speed configuration and injector coding.

### GLEANER

**C-13** (on SAE J1939) **Caterpillar** engine control system in **Lexion Series** and **Tucano Series** models, air dosing check and heater check of the exhaust gas aftertreatment system.

### JOHN DEERE

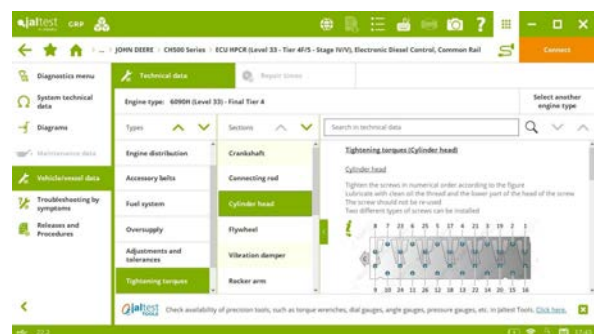
Vehicle technical data in several brand models.

### KIOTI

⊕ **EDC Kioti** engine control system.

### MASSEY FERGUSON

**MAN EDC 17 CV42** engine control system in **Ideal Series** models, injector coding and AdBlue/DEF filter replacement.



## SELF-PROPELLED AND TRAILING IMPLEMENT

New vehicle technical data and wiring diagram configurations in models of brands such as **AGRIFAC, AIR-O-FAN, HOLMER, KVERNELAND, PELLENC, SITREX -AGM**, etc. In addition, new component location images in models of this group, for example, for the **EDC 17 CV41 – Denox 2.2** engine control system installed in models of brands such as **KUHN, MILLER, TACOMA**, etc.

**404D/404E** (on SAE J1939) **Perkins** engine control system in the **Buggy Maxi 5000** model of the **PELLENC** brand, activations, cylinder cut-out, injector coding and calibration of the high-pressure pump.

**C-7** (on SAE J1939) **Caterpillar** engine control system in **994 Series** and **1194 Series** models of the **ROGATOR** brand, air dosing check and heater check of the exhaust gas aftertreatment system.

