



●jaltest

DIAGNOSTICS & TELEMATICS

www.jaltest.com

www.jaltest-telematics.com

AGRICULTURAL
VEHICLES



JALTEST AGV 18.1

Presentation of Innovations



Index

Image index	4
1. INTRODUCTION TO JALTEST AGV	5
2. NEW SOFTWARE FUNCTIONS	6
2.1. JALTEST SOFT	6
2.1.1. Vehicle communications bus test	6
2.1.2. Improvement in the management of Jaltest Feedback	7
2.1.3. Model search by category	8
2.1.4. Vehicle technical data in maintenance services	8
2.1.5. Search tool in the system action tree	9
2.1.6. Possibility to add customized troubleshooting guides to an error	10
2.1.7. Other innovations	11
3. NEW DIAGNOSIS FUNCTIONS AND SYSTEMS	12
3.1. Claas	12
- New Calibrations in Axion 8X0 A31 models	12
- New harvesting equipment models:	13
- New specific systems for harvesting equipment:	14
- NEW!!! SCR-Bluetec, SCR-Related memory reset	15
- New diagrams and system technical data in Axion 8X0 A31	16
3.2. Deutz-Fahr	17
- New models: Interim and Final Tier IV	17
- New models: Interim and Final Tier IV	17
- New Display System Scan using the OBD connector	18
- New Releases and step-by-step Procedures: Calibrations, Maintenance Reset, Control Unit Replacement	19
3.3. Fendt	20
- New Calibrations in 900 Vario Final Tier IV and 300 Vario Final Tier IV	20
- New Maintenance System available in all Final Tier IV models	21
3.4. John Deere	22
- New configuration and parameter setting of spool valves in SCC Systems	22
- New wiring diagrams and system technical data in SCC systems	23
- New wiring diagrams and system technical data in CommandQuad transmission systems	23
- New System Display in FullPowerShift transmission systems	24
- New Self-Propelled Sprayer in specific spray systems	24
3.5. Massey Ferguson	25
- New models: 700 Series Final Tier IV	25

- New systems for 700 Series Final Tier IV models..... 26
- New calibrations in all 700 Series Final Tier IV models.....27
- New Maintenance system available in 5600, 6600, 7600 and 8600 Series.....27
- New wiring diagrams and System technical data for the new systems..... 28
- 3.6. *URSUS*..... 29
 - New models: C Series Interim and Final Tier IV 29
 - New engine system: Perkins 854E 30
 - New engine system: Deutz EMR4 EDC 17 CV52 30
 - New wiring diagrams and technical data in Deutz EMR4 EDC 17 CV52 engine system 31
- 3.7. *Valtra* 31
 - New calibrations in all N Series and T Series models, PowerShift and CVT 31



Image index

Image 1 Jaltest Link, Vehicle communications test.....	6
Image 2 Results of vehicle communications test. CAN bus.....	7
Image 3 Jaltest Feedback Menu.....	7
Image 4 Jaltest Feedback History.....	8
Image 5 Search filters by category in New Holland.....	8
Image 6 Access to technical data from maintenance data in New Holland T9.....	9
Image 7 Maintenance data in New Holland T9.....	9
Image 8 Filter in action tree in ECU HPCR Level 33.....	10
Image 9 Error troubleshooting guide.....	10
Image 10 Creation of a step in a customized troubleshooting guide.....	11
Image 11 Clutch pedal calibration in Axion 8X0 A31.....	12
Image 12 Hydrostatic unit calibration in Axion 8X0 A31.....	12
Image 13 New Claas Jaguar models.....	13
Image 14 New Claas Lexion models.....	13
Image 15 New Claas Tucano models.....	14
Image 16 Locations of the armrest switches in VBM system.....	14
Image 17 Locations of all combine components in VBM system.....	15
Image 18 SCR-Related memory reset.....	15
Image 19 SCR-Related memory reset help.....	16
Image 20 New wiring diagram and technical data of the REH system in Axion 8X0 A31.....	16
Image 21 New wiring diagram and technical data of the DBD5 system in Axion 8X0 A31.....	17
Image 22 New models Interim and Final Tier IV.....	18
Image 23 Connection to Display System Scan through OBD.....	18
Image 24 Operation of Display System Scan through OBD.....	19
Image 25 Step-by-step procedures in Display System Scan.....	19
Image 26 New calibration in 300 Vario Final Tier IV models.....	20
Image 27 New calibration in 900 Vario Final Tier IV models.....	20
Image 28 New maintenance System in all Final Tier IV models.....	21
Image 29 Step-by-step instructions to carry out the cluster and engine maintenance.....	21
Image 30 Advanced actions in SCC systems.....	22
Image 31 Spool valves programming in SCC systems.....	22
Image 32 Wiring diagrams and system technical data in SCC systems.....	23
Image 33 Wiring diagrams and system technical data in CommandQuad transmission.....	23
Image 34 System display in FullPowerShift transmission systems.....	24
Image 35 Self-propelled sprayer in John Deere.....	25
Image 36 Specific spray systems.....	25
Image 37 New models and systems for Massey Ferguson 700 Series.....	26
Image 38 Calibrations in Massey Ferguson 700 Series.....	27
Image 39 New maintenance system in Massey Ferguson 600 Series.....	27
Image 40 Step-by-step instructions to carry out the cluster and engine maintenance.....	28
Image 41 Wiring diagrams in the new Massey Ferguson systems.....	28
Image 42 Technical data in the new Massey Ferguson systems.....	29
Image 43 New URSUS models.....	29
Image 44 Advanced functions in Perkins 854E engine.....	30
Image 45 Advanced functions in Deutz EMR4 EDC 17 CV52 engine.....	30
Image 46 Wiring diagrams and technical data in Deutz EMR4 EDC 17 CV52 engine.....	31
Image 47 New calibrations for Valtra.....	31

1. INTRODUCTION TO JALTEST AGV

The **new software version Jaltest AGV 18.1** once again offers more improvements and innovations that consolidate this tool as a benchmark in multibrand diagnosis for Agricultural Tractors, Combine Harvesters, Forage Harvesters, Telescopic Handlers, **and much more...**

-Improvement in the management of Jaltest Feedback. In this version, it is possible to save them and send them later.

-Improvement in the model classification in some brands, including new search filters.

-Access to specific relevant technical data from a maintenance service.

-New vehicle communications test.

Below is a summary of the **Jaltest AGV 18.1** version update, which includes, among others, the following innovations:

- New **Calibrations** in Claas tractors
- New **Specific combine systems** in Claas harvesters
- **New Models:** Deutz-Fahr Interim and Final Tier IV
- New **Maintenance Systems** in Fendt and Massey Ferguson
- New **Spool Valve configuration** available in John Deere R Series
- **New Models:** Massey Ferguson X700 Final Tier IV
- New models: **Ursus Interim and Final Tier IV**
- New **calibrations in Valtra**, CVT transmissions and PowerShift

Take into account that this document is only a summary of the most relevant information of this new version. For further information, please visit **Jaltest Report**.

Finally, remember that, for security reasons, the **Expert Mode** has changed with the first version of the year. Please, access the client area on the website to request it again.

2. NEW SOFTWARE FUNCTIONS

2.1. JALTEST SOFT

2.1.1. Vehicle communications bus test

This function allows to check if there is data traffic in the vehicle communications bus. By performing this test along with the connection test, which shows the voltage value of the diagnosis device, it is possible to detect and solve problems in the communication lines and the vehicle connector, or problems related to the connection with a system.

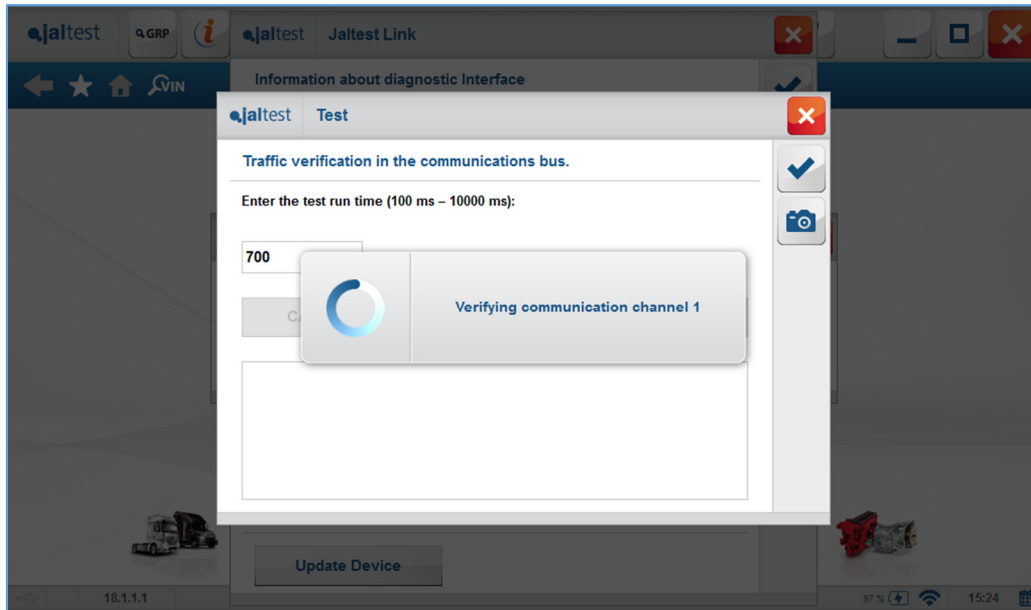


Image 1 Jaltest Link, Vehicle communications test

It is possible to verify more than one CAN or bus SAE J1708 communication channel at the same time, since this test sweeps all the pins of the diagnosis connector.

First, the test duration time must be entered. Then, you only need to analyze the results. The following data are displayed:

- If no communication channel was detected.
- Possible signal errors.
- Communication speed.
- Number of messages read during the set time

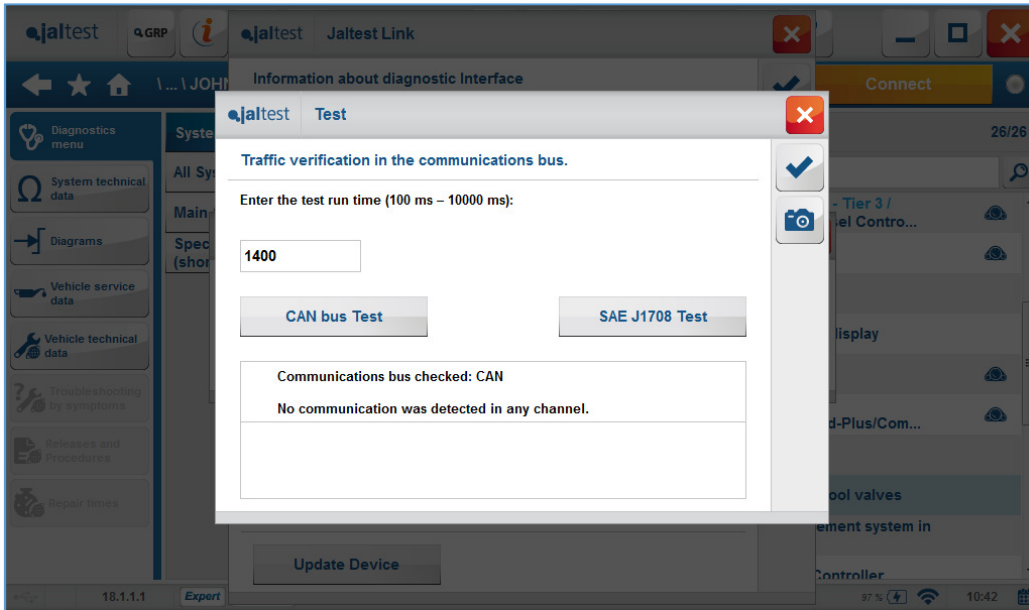


Image 2 Results of vehicle communications test. CAN bus

2.1.2. Improvement in the management of Jaltest Feedback

It is possible to save the Jaltest Feedback without Internet connection, and manage this information through the new button 'Jaltest Feedback History'.

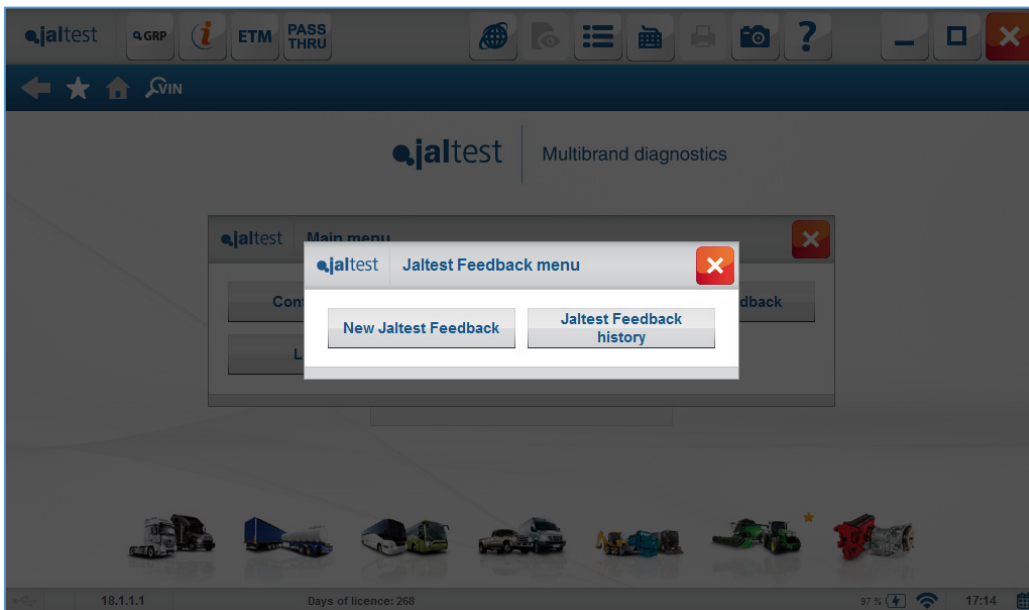


Image 3 Jaltest Feedback Menu

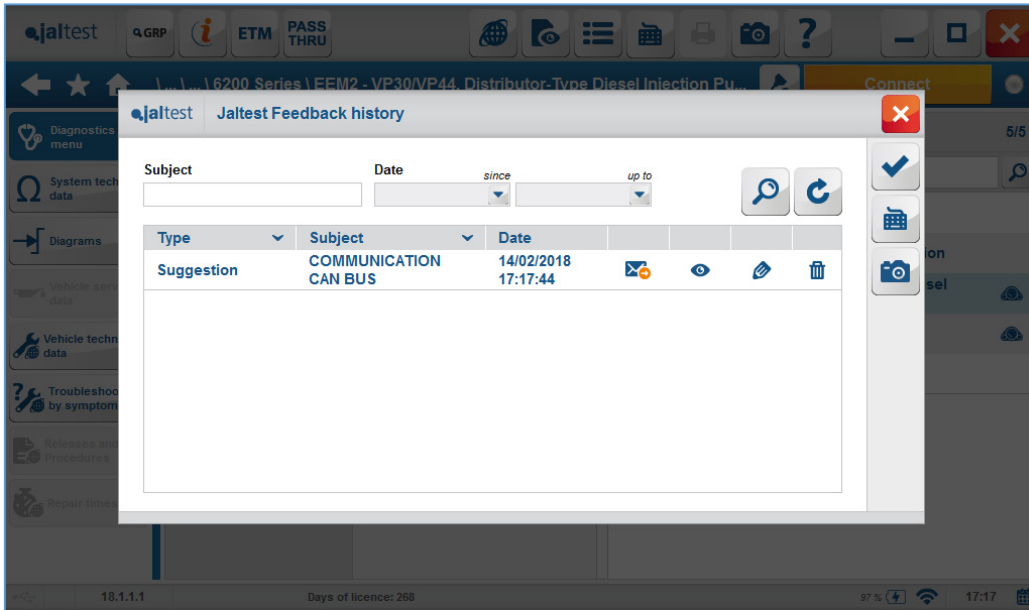


Image 4 Jalttest Feedback History

2.1.3. Model search by category

With the goal of improving the vehicle model selection, the filter 'Search by category' has been created. It can be combined with the text filter and the model family selection.

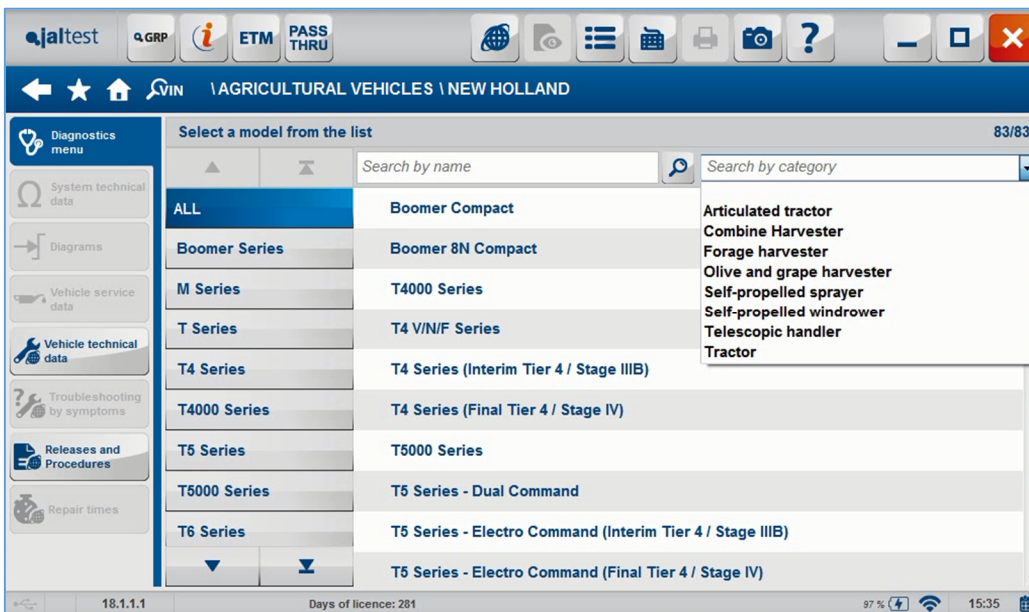


Image 5 Search filters by category in New Holland

2.1.4. Vehicle technical data in maintenance services

In this new version, it is possible to easily access the technical data related to an operation or maintenance service through the 'wrench' icon

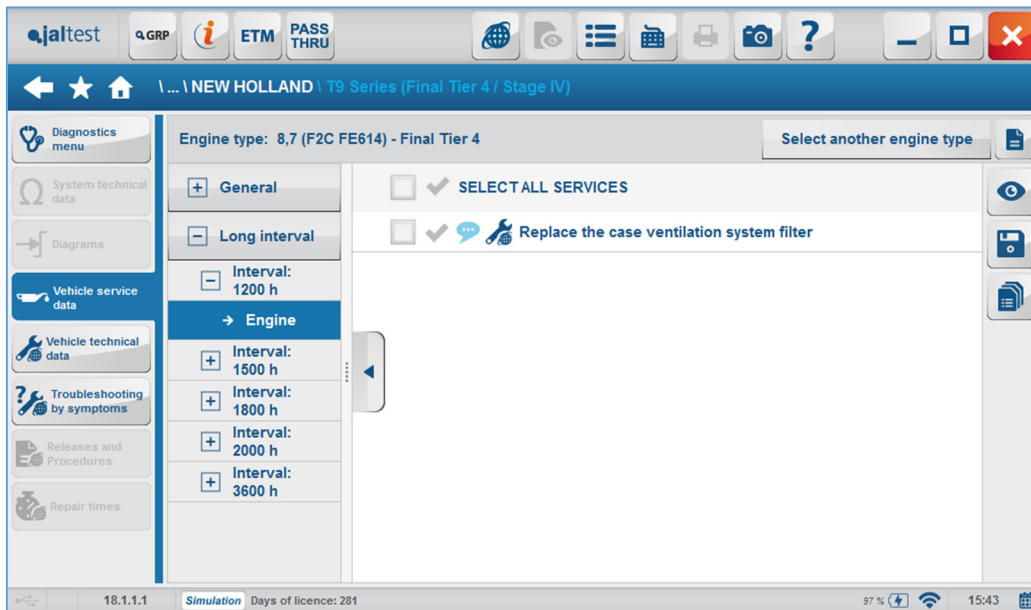


Image 6 Access to technical data from maintenance data in New Holland T9

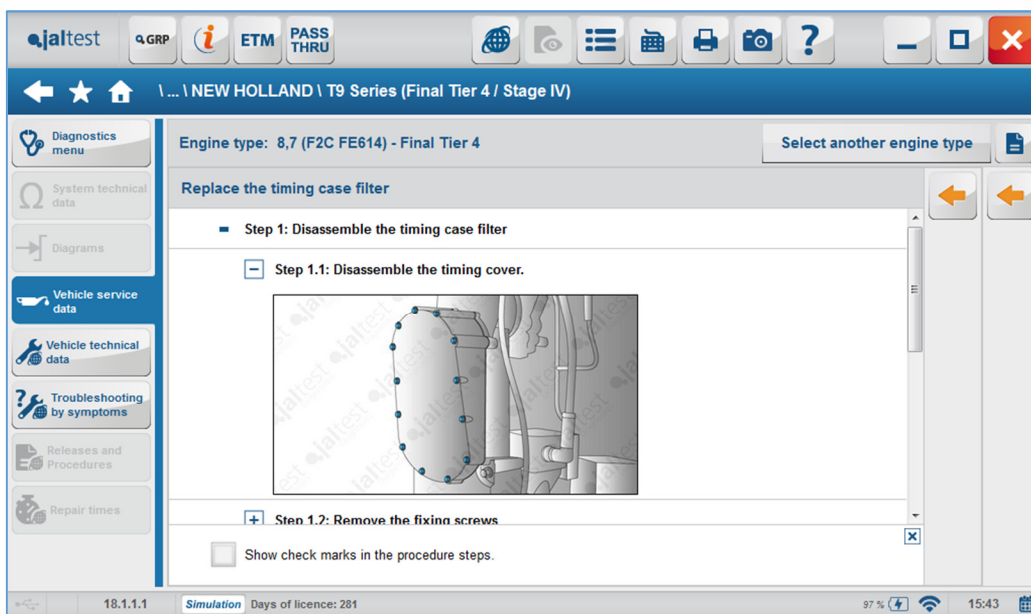


Image 7 Maintenance data in New Holland T9

2.1.5. Search tool in the system action tree

This function allows to search a function inside the system actions menu. Use this filter with 'key' words to speed up the navigation through the diagnosis software. As shown in the image, the menu is reduced to the actions that contain the searched word. To display the complete menu again, all you need to do is delete the text that you entered and press the search button again.

Next, you will find a list with some examples that can be used in different systems:

- EGR
- VGT

- Injector
- Regeneración
- DPF
- Reset
- Filter
-

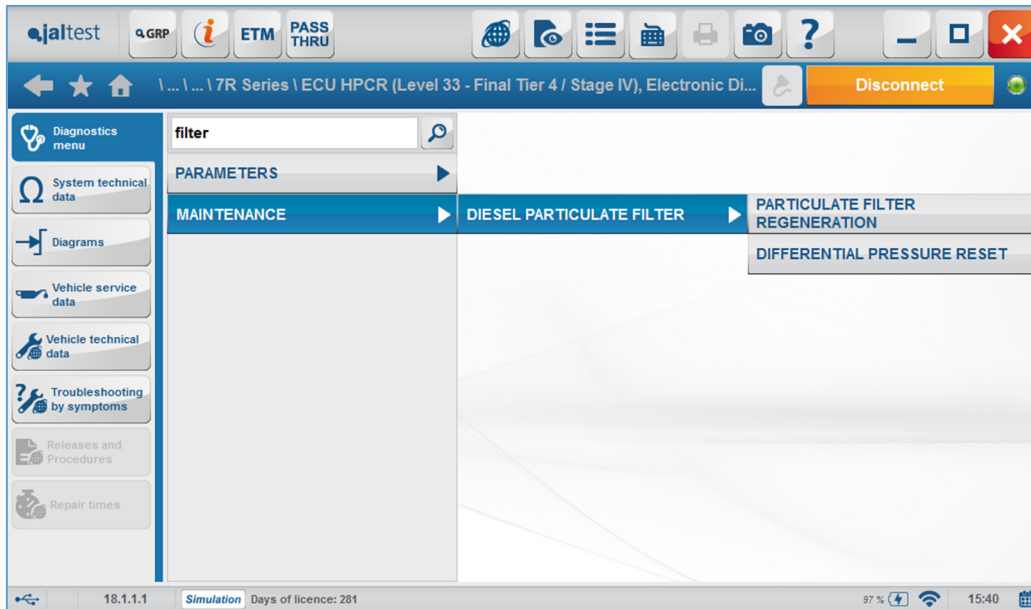


Image 8 Filter in action tree in ECU HPCR Level 33

2.1.6. Possibility to add customized troubleshooting guides to an error

Last version, the software customization was improved with the possibility to add customized troubleshooting guides by symptom. Now, they can be assigned to errors too.

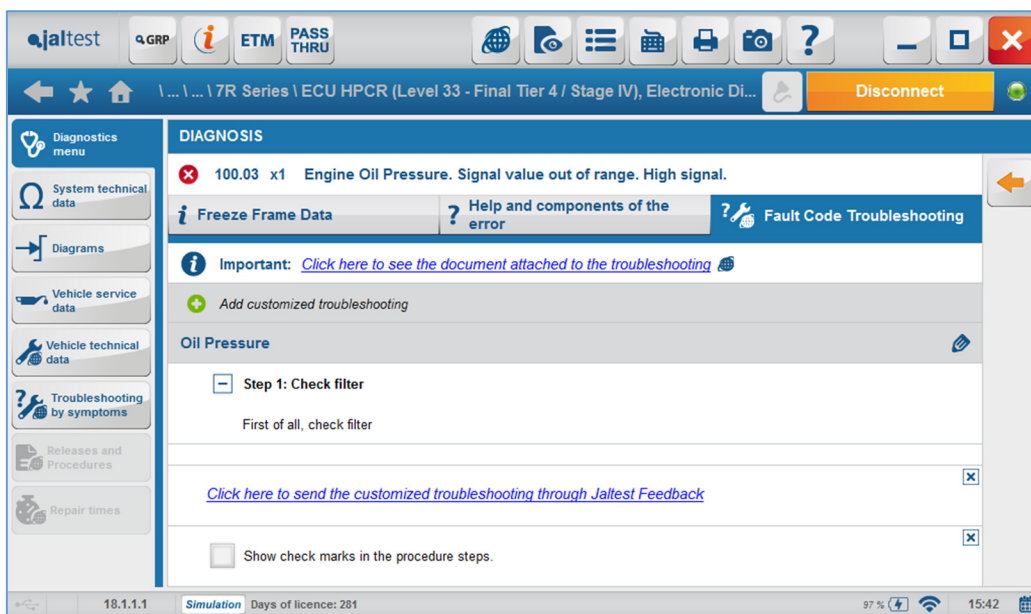


Image 9 Error troubleshooting guide

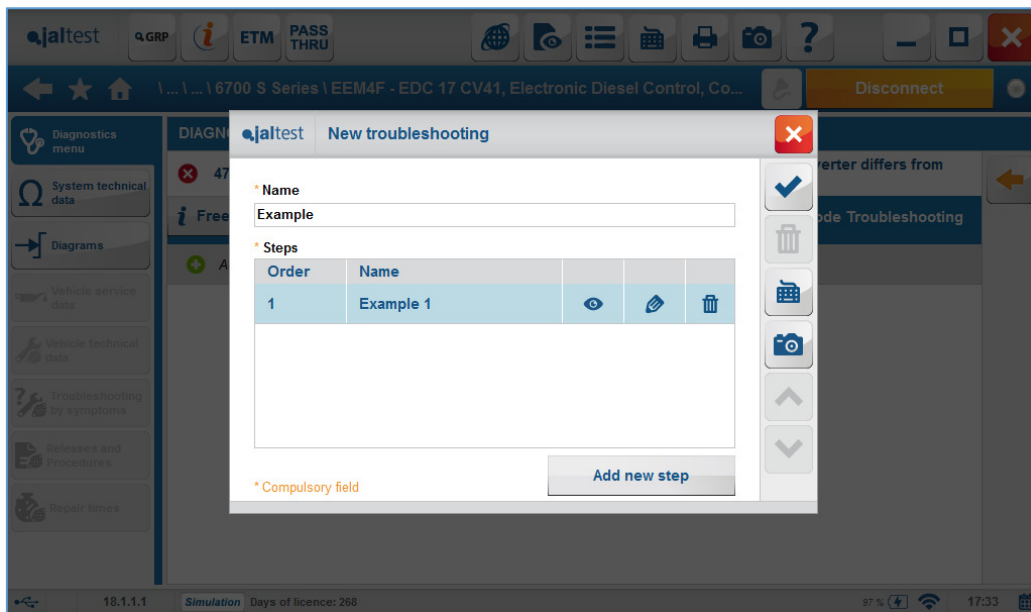


Image 10 Creation of a step in a customized troubleshooting guide

In the future, it will be possible to customize error help texts, maintenance sheets, and more.

2.1.7. Other innovations

In addition, other improvements and new functions have been added. Some are listed below:

- Improvements in the steps of parameter configuration actions, more available ranges and dependency between the values of the different parameters.
- Improvements in error help texts, which may contain images.
- Improvements in control and back-up of parameter files.

3. NEW DIAGNOSIS FUNCTIONS AND SYSTEMS

Take into account that this document is only a summary of the most relevant information of this new version. For further information, please visit **Jaltest Report**.

3.1. Claas

- New **Calibrations** in Axion 8X0 A31 models.

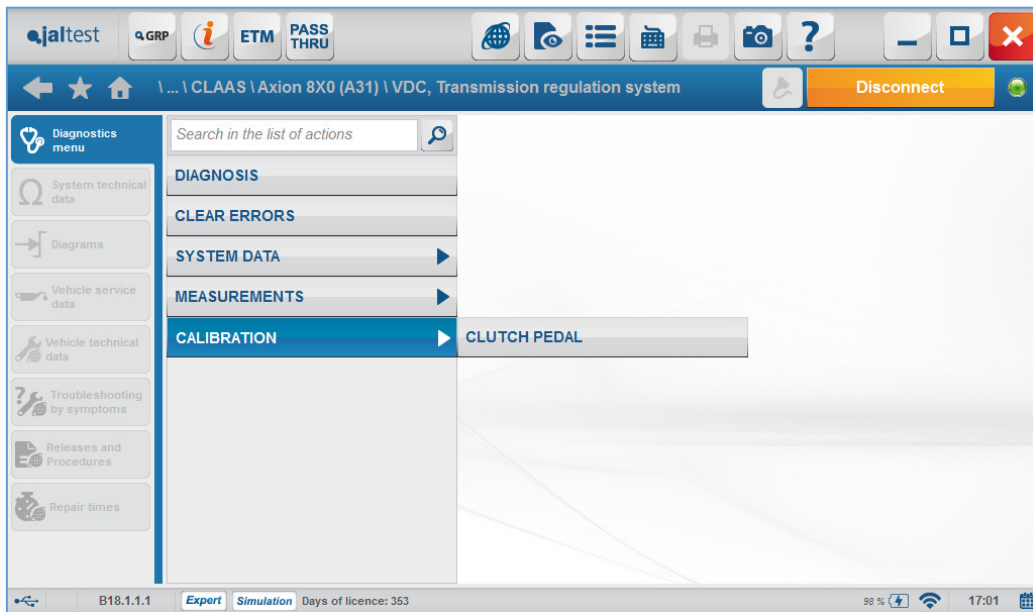


Image 11 Clutch pedal calibration in Axion 8X0 A31

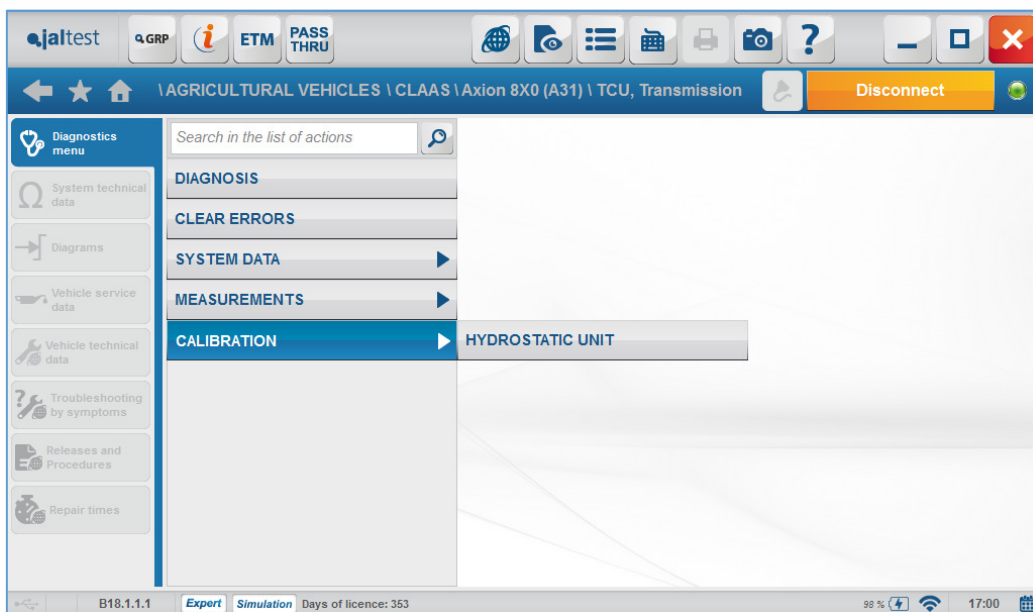


Image 12 Hydrostatic unit calibration in Axion 8X0 A31

- New **harvesting equipment** models:

- o Jaguar
- o Lexion Series
- o Tucano
- o Medion Series

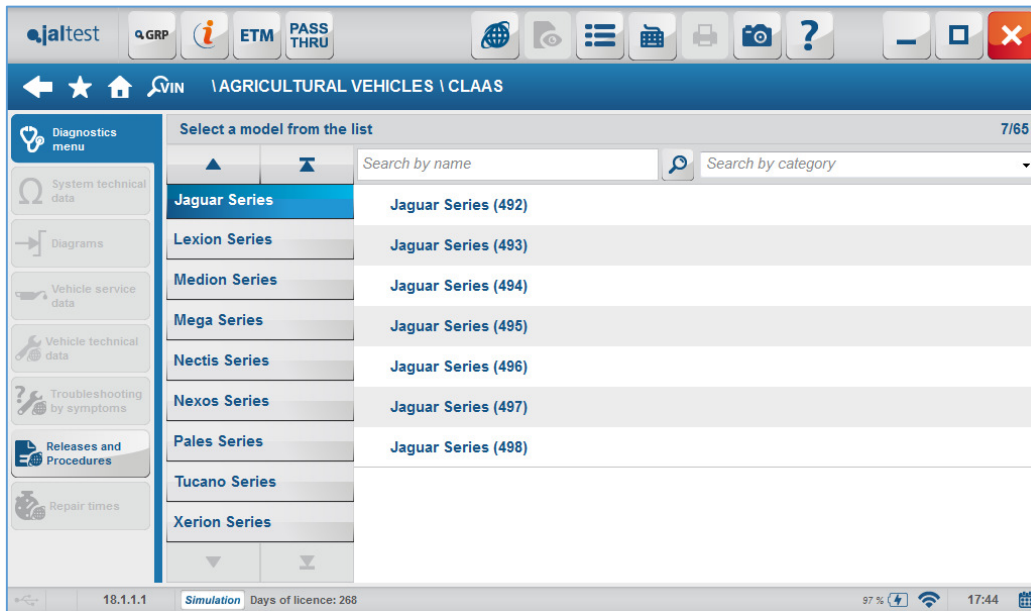


Image 13 New Claas Jaguar models

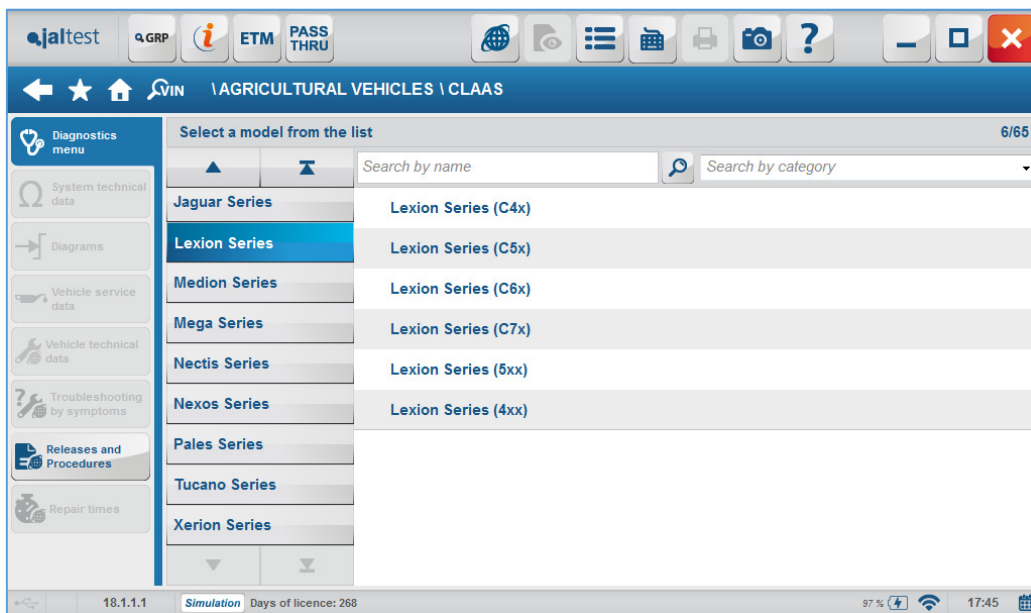


Image 14 New Claas Lexion models

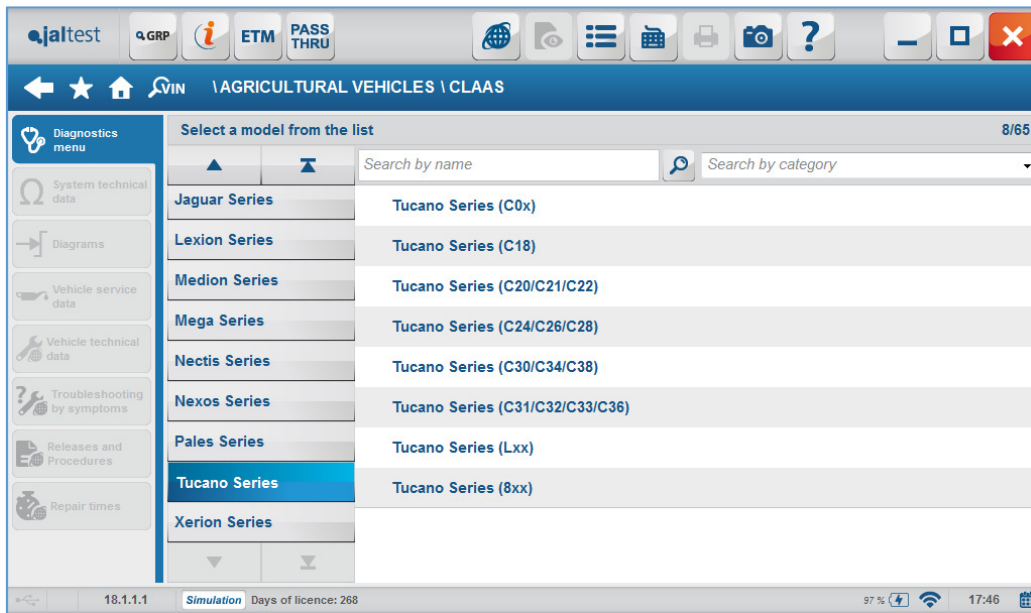


Image 15 New Claas Tucano models

- New **specific systems** for harvesting equipment:

- VBM
- OPM



Image 16 Locations of the armrest switches in VBM system

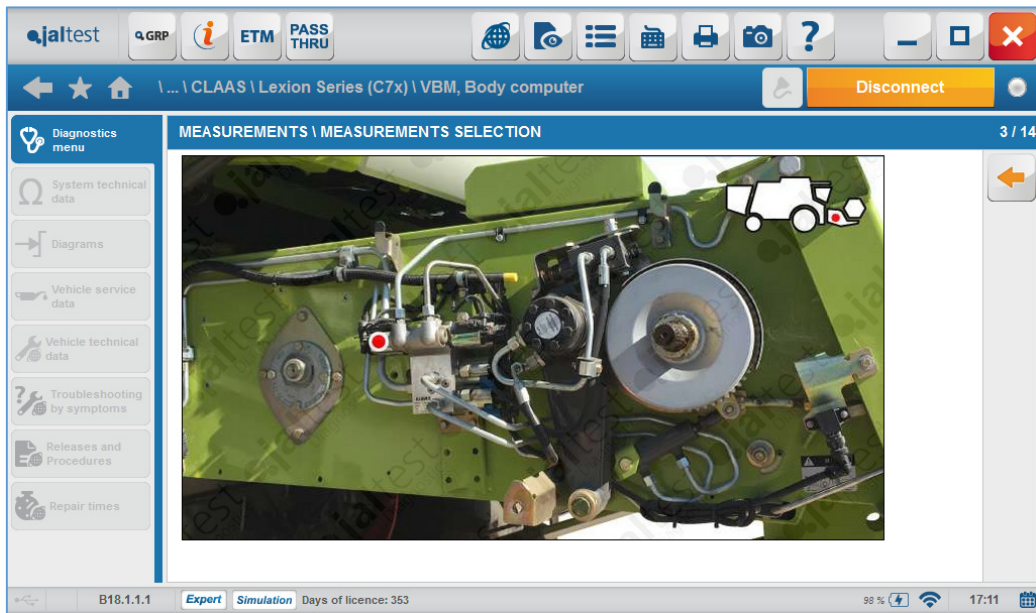


Image 17 Locations of all combine components in VBM system

- **NEW!!!** SCR-Bluetec, SCR-Related memory reset

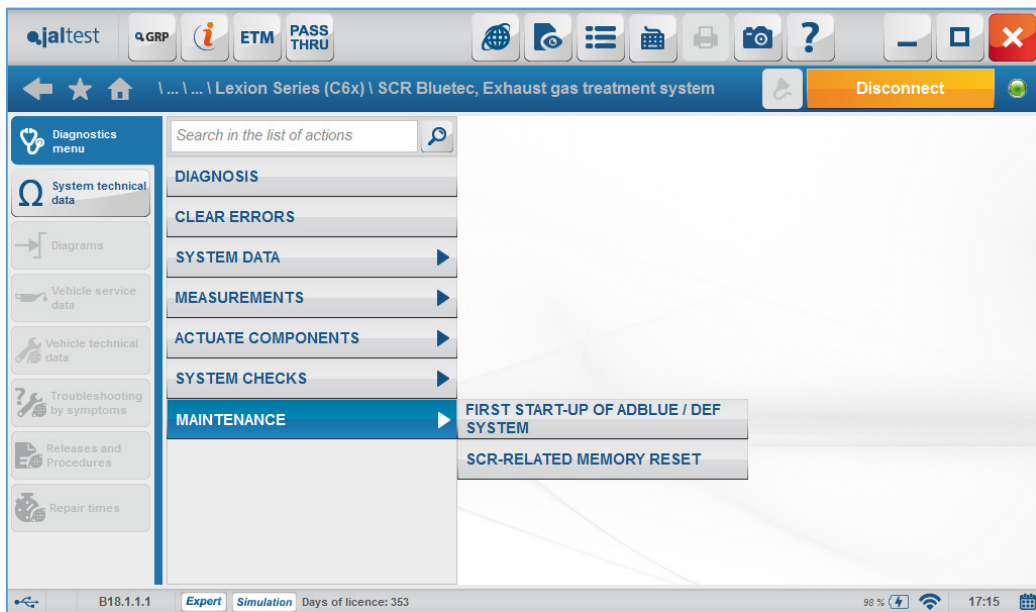


Image 18 SCR-Related memory reset

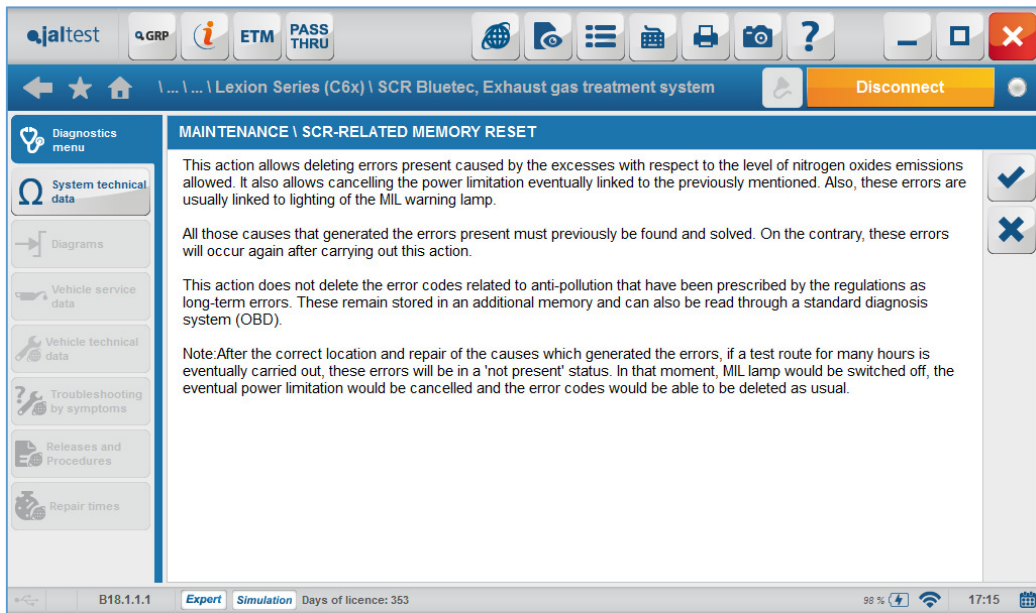


Image 19 SCR-Related memory reset help

- New diagrams and system technical data in Axion 8X0 A31

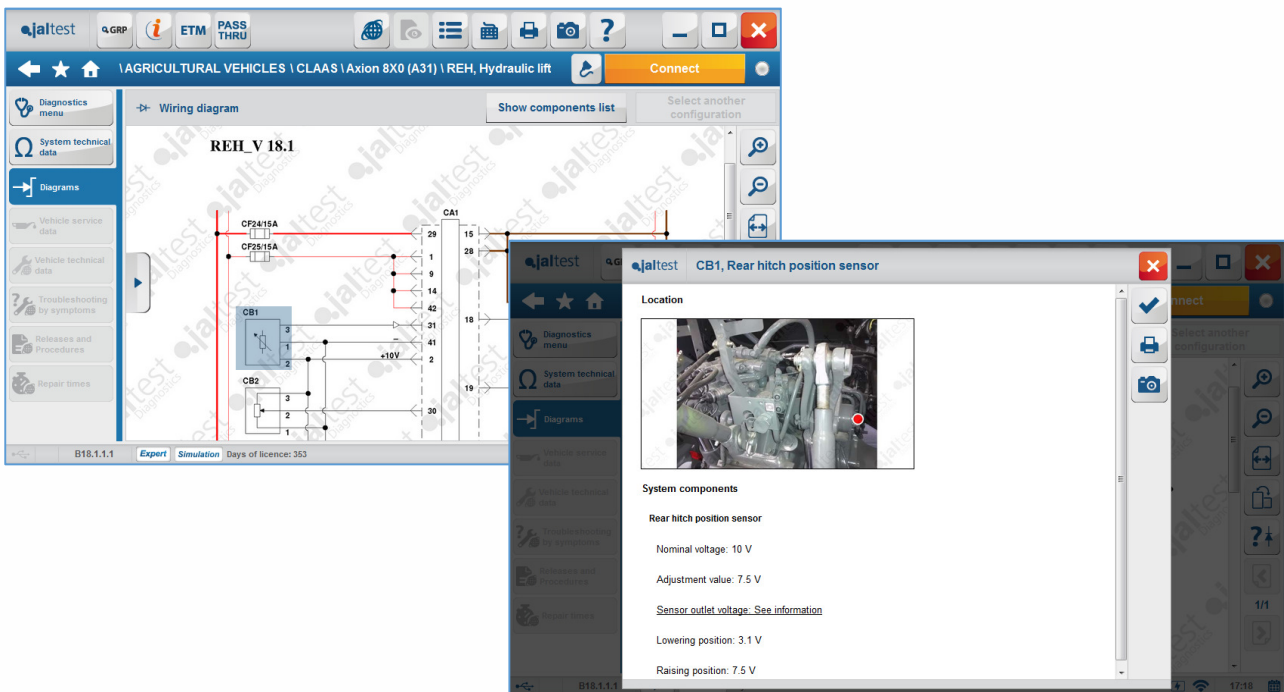


Image 20 New wiring diagram and technical data of the REH system in Axion 8X0 A31

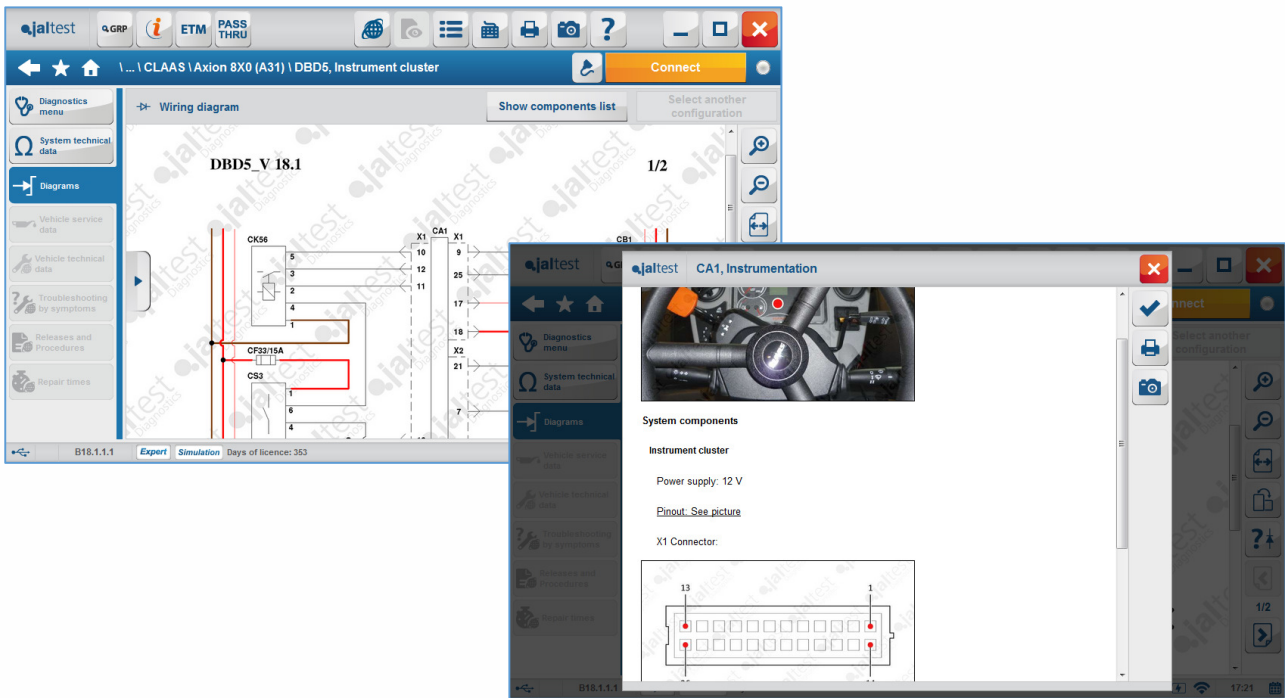


Image 21 New wiring diagram and technical data of the DBD5 system in Axion 8X0 A31

3.2. Deutz-Fahr

- **New models:** Interim and Final Tier IV
 - o 5 C Series
 - o 5 D Series
 - o 5 G Series
 - o 5 P Series
 - o 5 TTV Series

- **New models:** Interim and Final Tier IV
 - o 6 P Series
 - o 6 TTV Series
 - o 6.4 TTV Series
 - o 6.4 Series

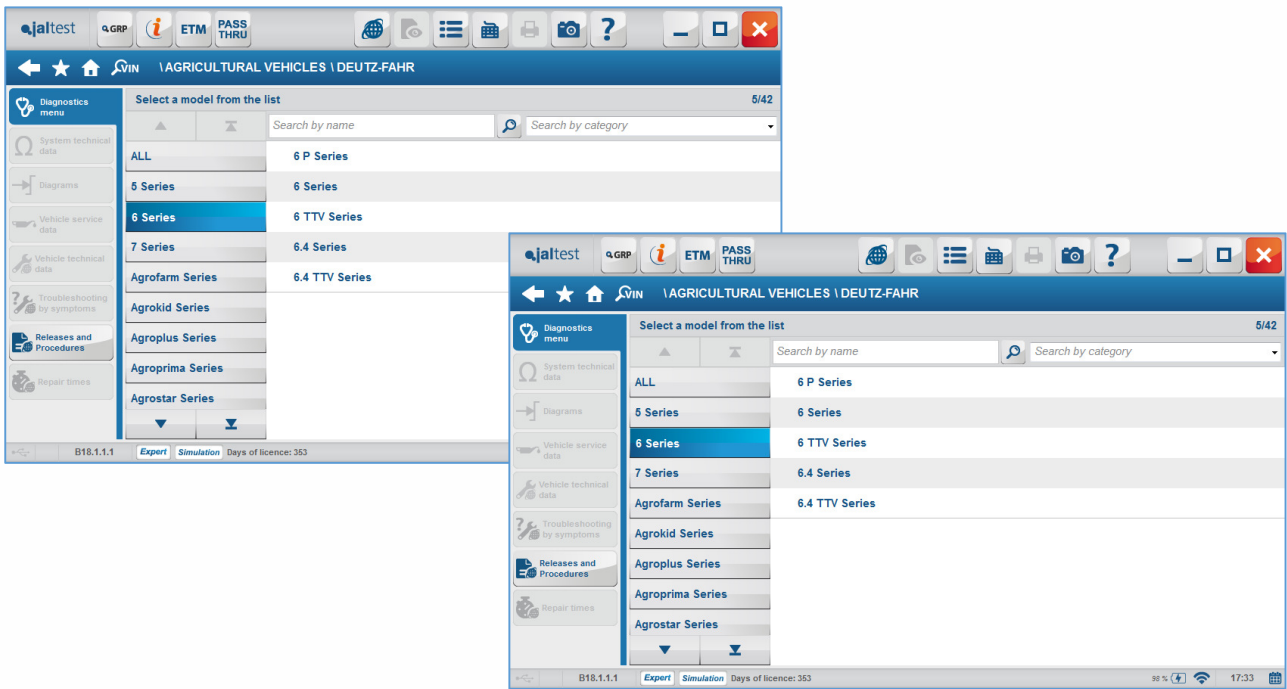


Image 22 New models Interim and Final Tier IV

- New Display System Scan using the **OBD connector**
 - o Models: Interim and Final Tier IV

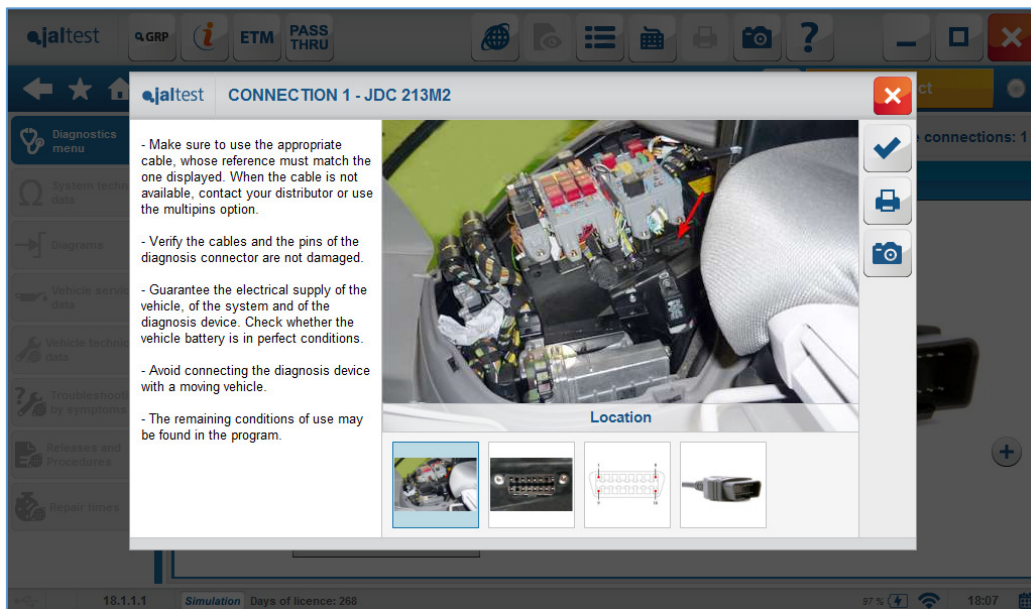


Image 23 Connection to Display System Scan through OBD

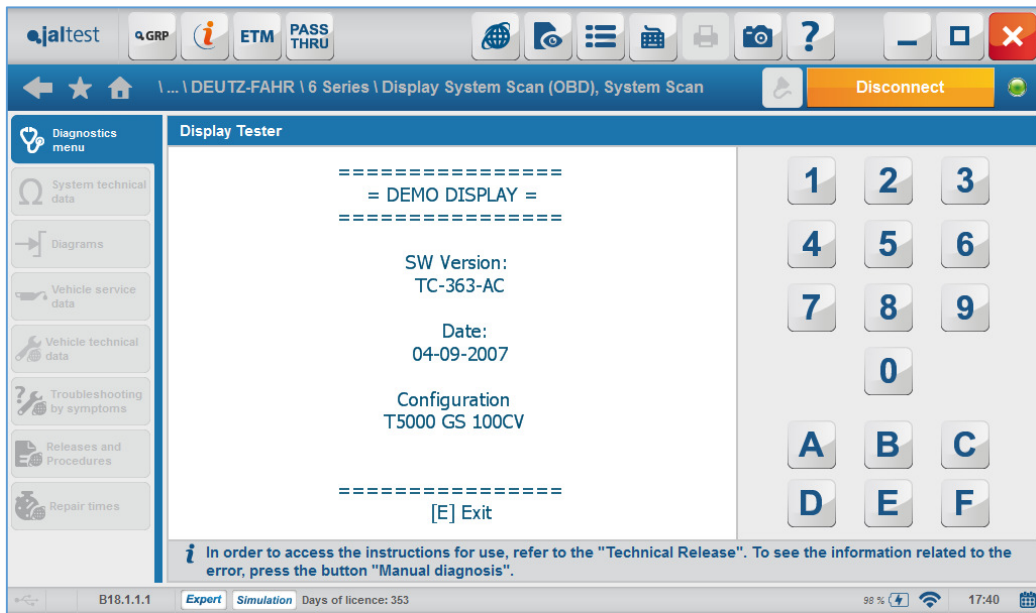


Image 24 Operation of Display System Scan through OBD

- New Releases and **step-by-step Procedures**: Calibrations, Maintenance Reset, Control Unit Replacement...
 - o All series

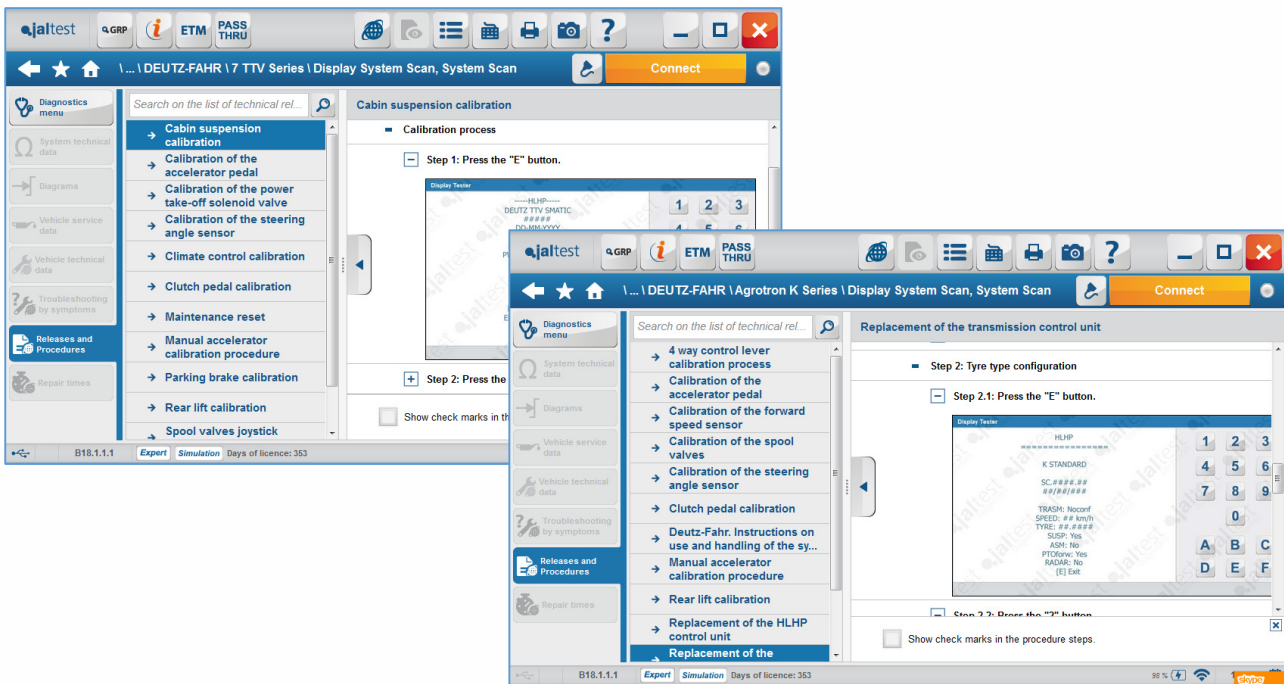


Image 25 Step-by-step procedures in Display System Scan

3.3.Fendt

- **New Calibrations** in 900 Vario Final Tier IV and 300 Vario Final Tier IV
 - o Comfort
 - o THS
 - o ZE
 - o MFA

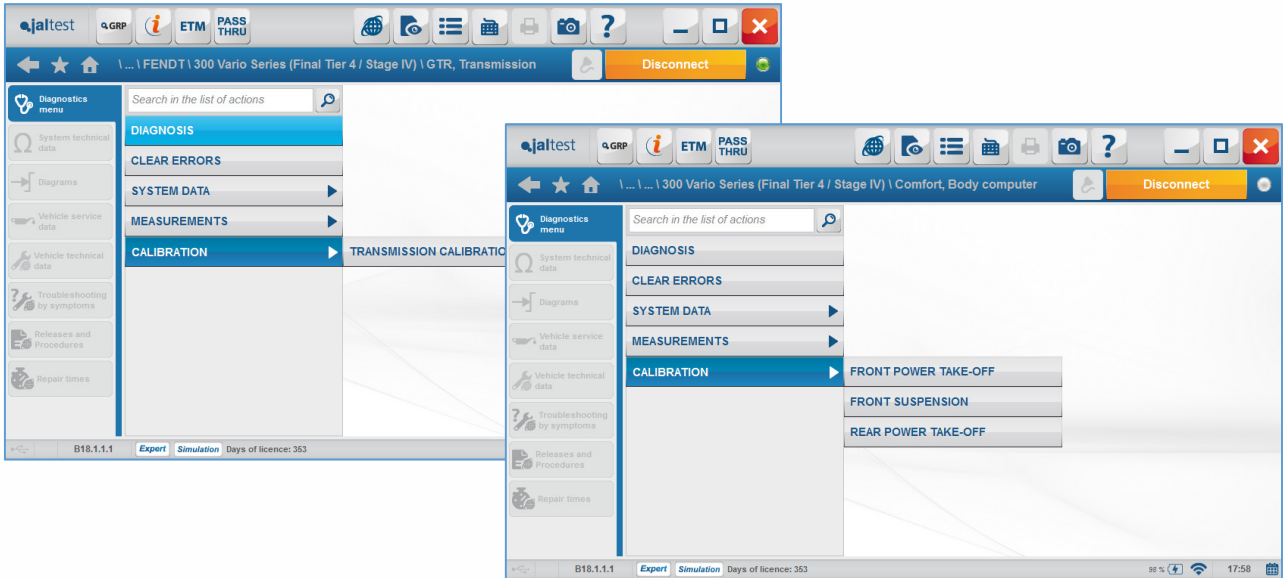


Image 26 New calibration in 300 Vario Final Tier IV models

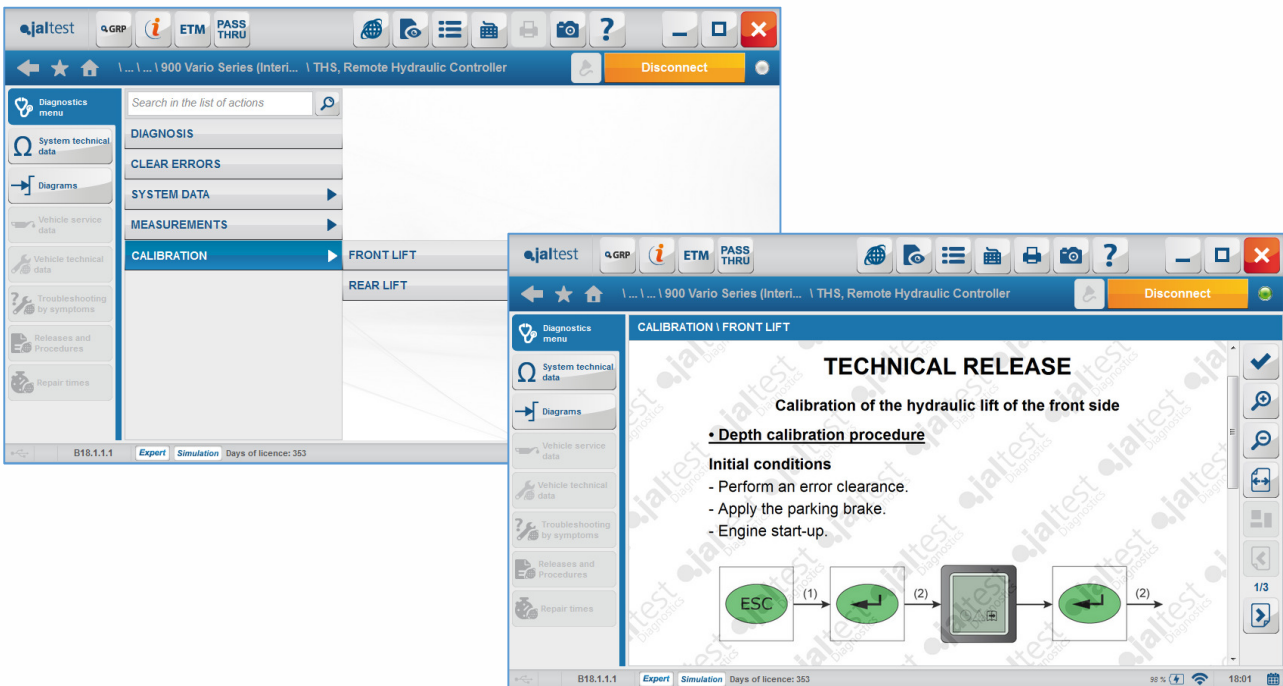


Image 27 New calibration in 900 Vario Final Tier IV models

- **New Maintenance System** available in all Final Tier IV models

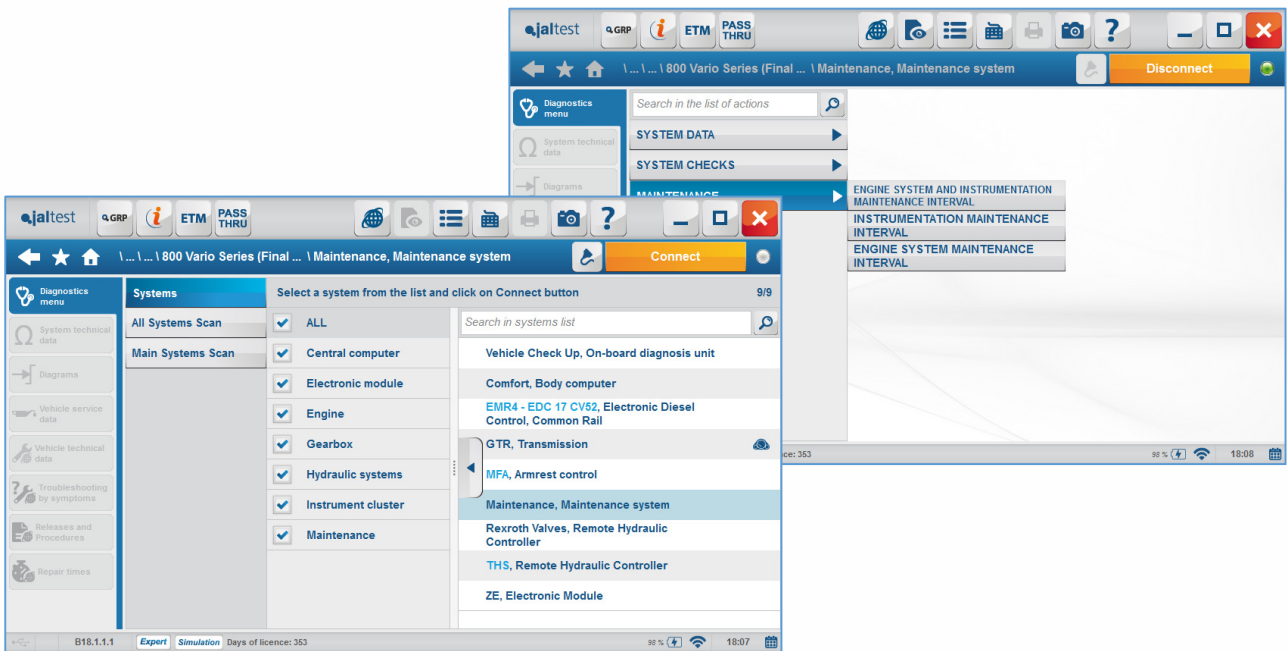


Image 28 New maintenance System in all Final Tier IV models

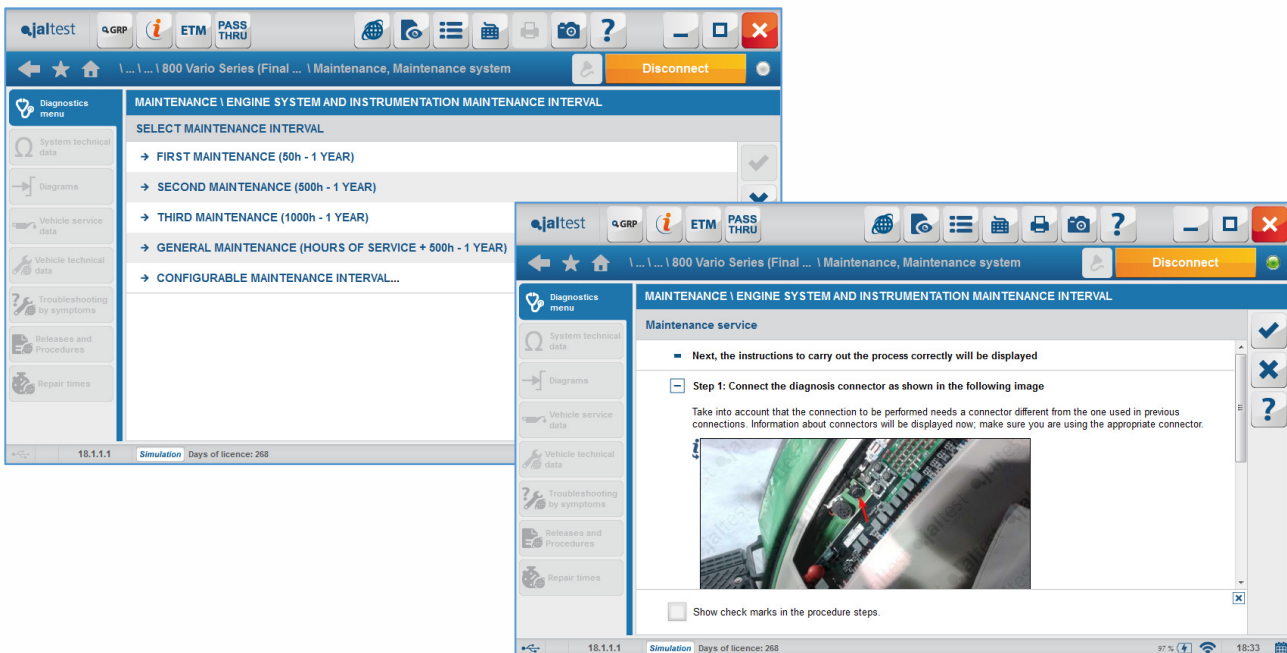


Image 29 Step-by-step instructions to carry out the cluster and engine maintenance

3.4. John Deere

- **New configuration and parameter setting** of spool valves in SCC Systems
 - o 7R Series
 - o 8030 Series
 - o 8R Series
 - o 9030 Series
 - o 9R Series

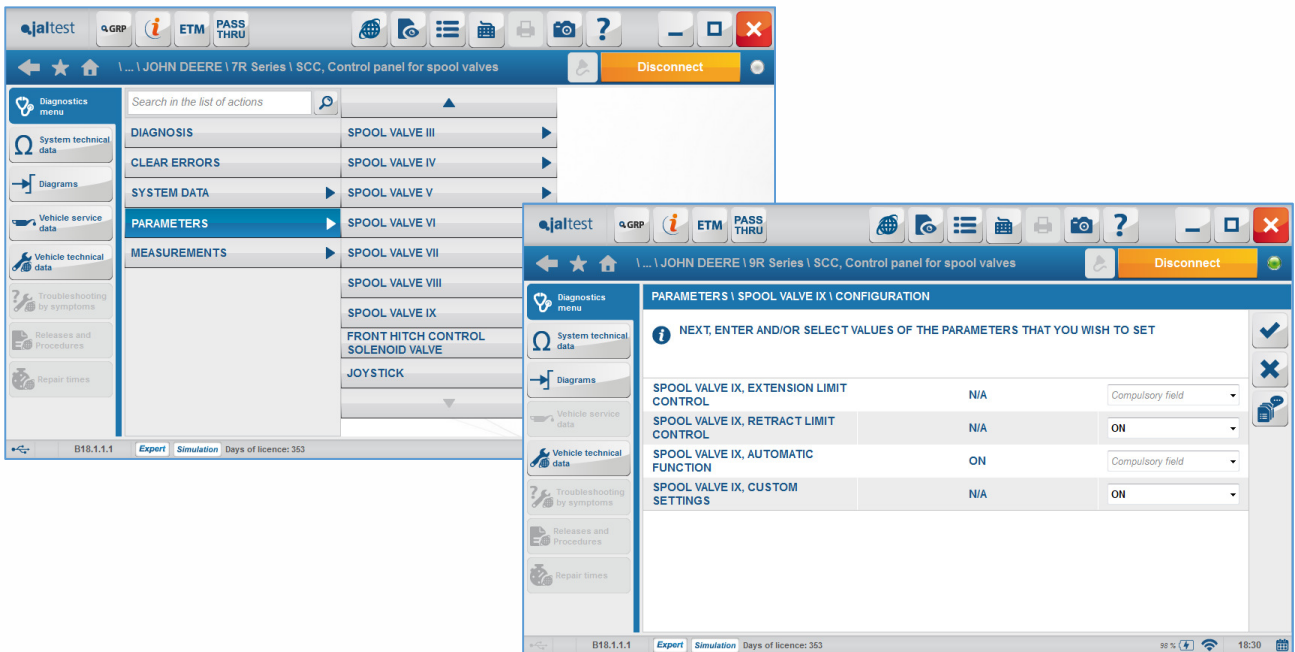


Image 30 Advanced actions in SCC systems

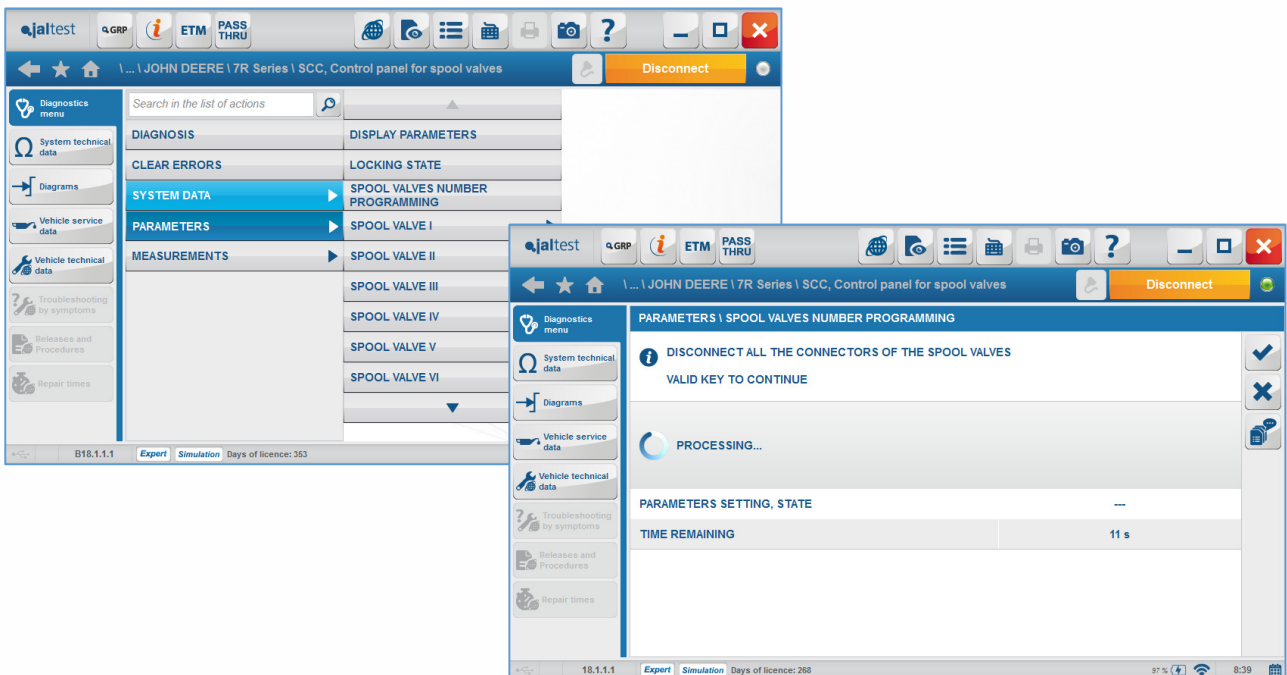


Image 31 Spool valves programming in SCC systems

- New wiring diagrams and system technical data in **SCC systems**



Image 32 Wiring diagrams and system technical data in SCC systems

- New wiring diagrams and system technical data in **CommandQuad** transmission systems

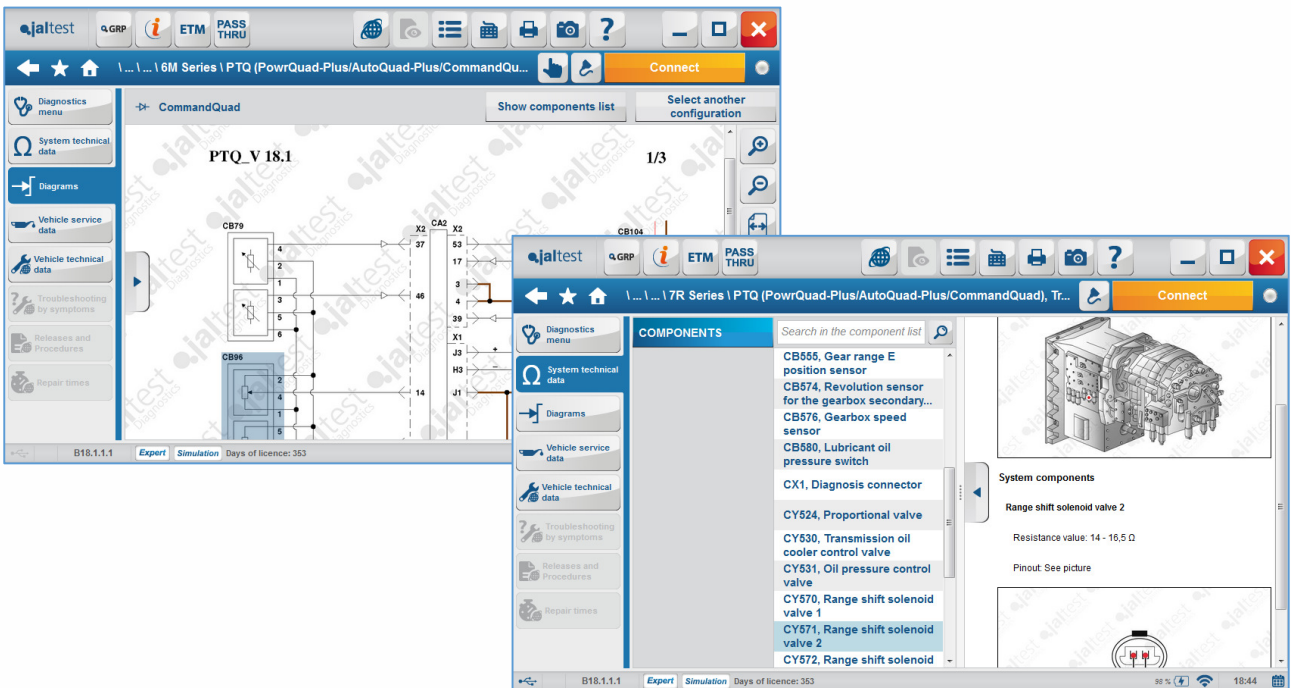


Image 33 Wiring diagrams and system technical data in CommandQuad transmission

- **New System Display** in FullPowerShift transmission systems
 - o 7R Series
 - o 8030 Series
 - o 8R Series
 - o 9030 Series

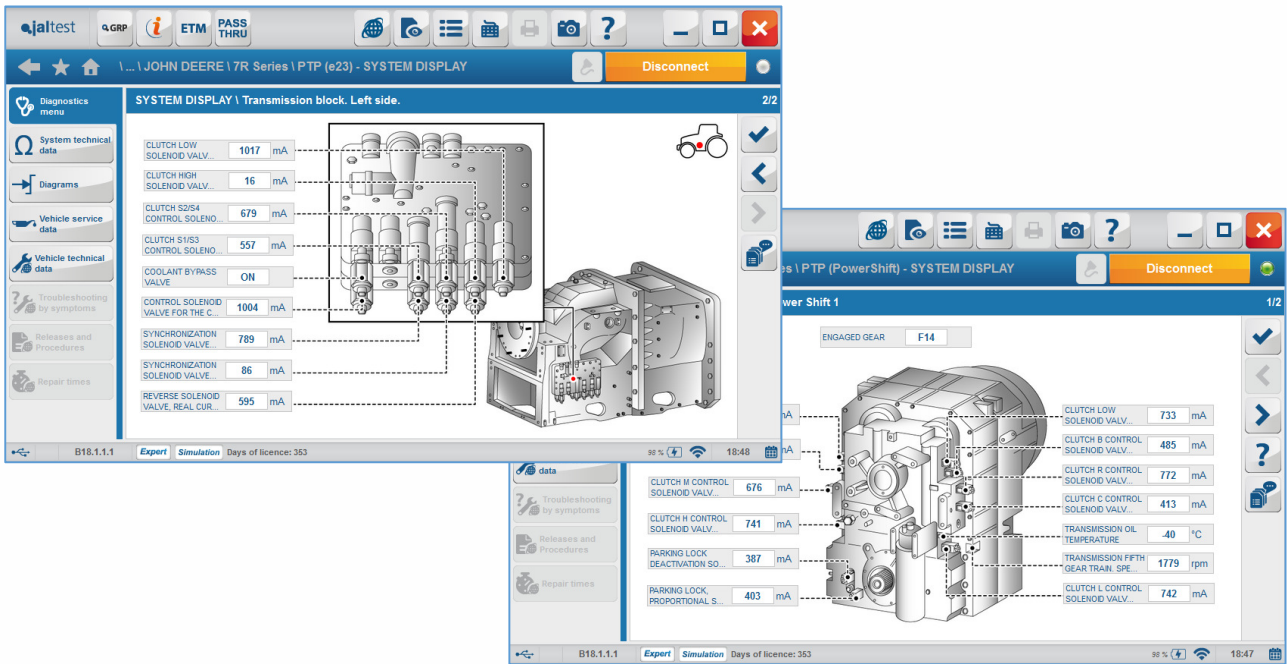


Image 34 System display in FullPowerShift transmission systems

- **New Self-Propelled Sprayer** in specific spray systems
 - o 4020 Series
 - o 4030 Series
 - o 4040 Series
 - o 4R Series

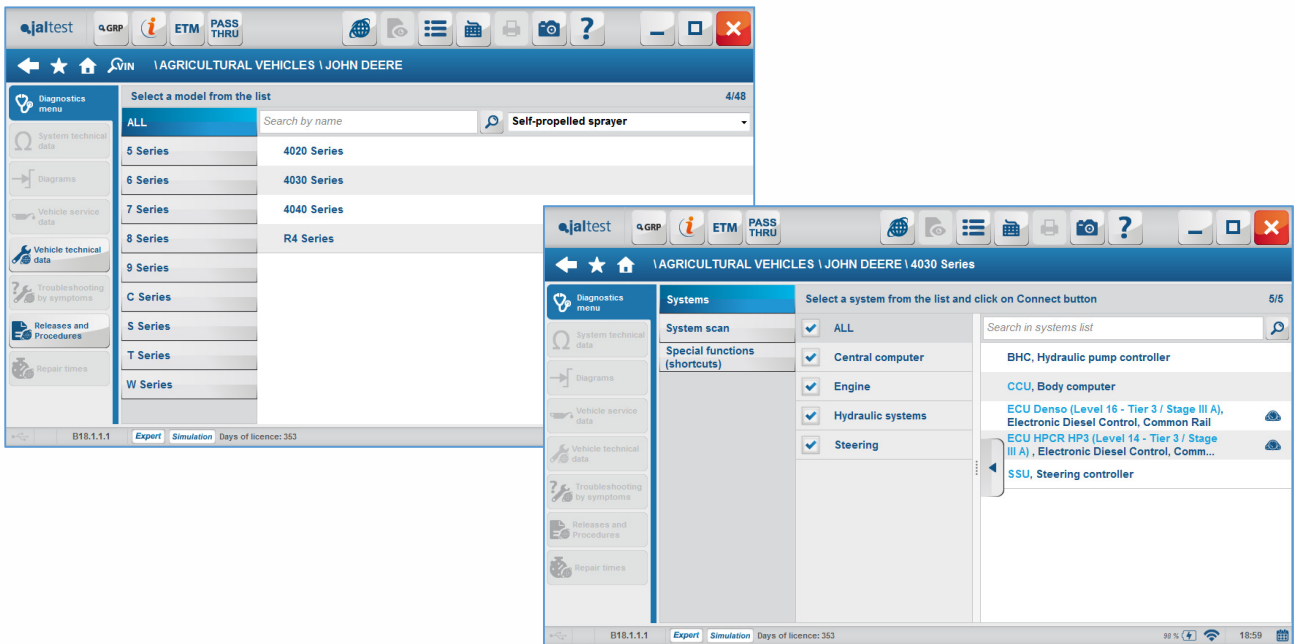


Image 35 Self-propelled sprayer in John Deere

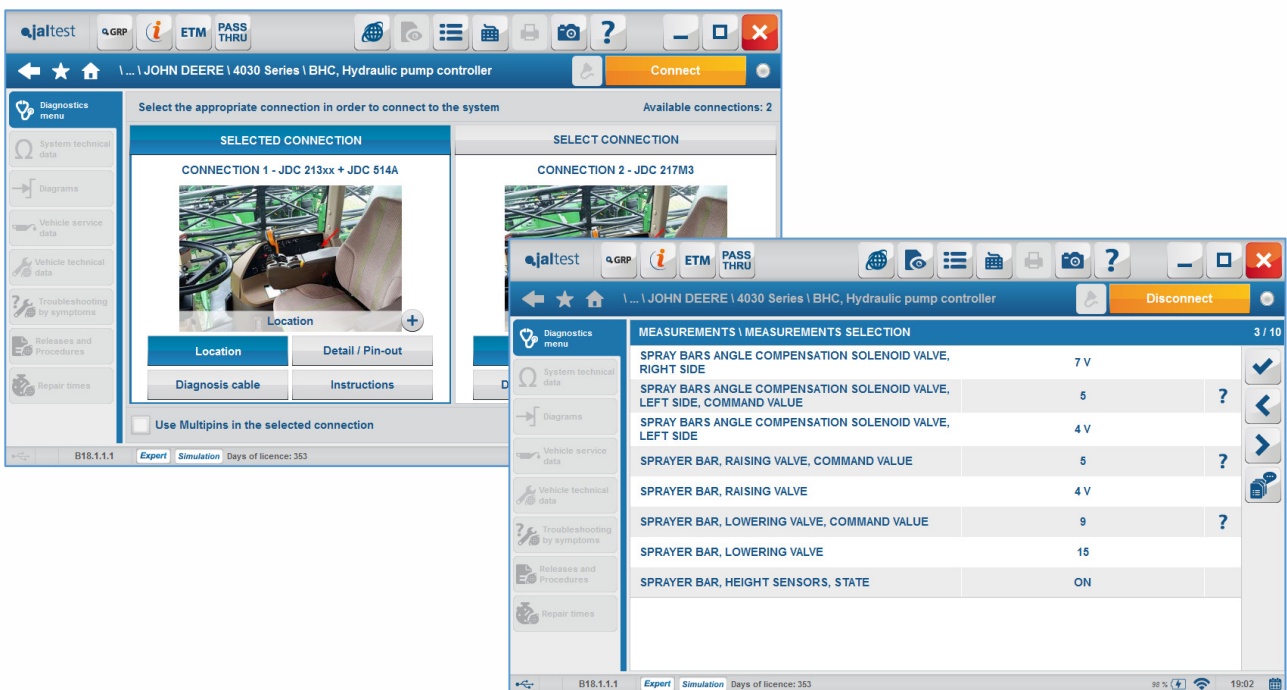


Image 36 Specific spray systems

3.5. Massey Ferguson

- **New models:** 700 Series Final Tier IV
 - o 4700 Series
 - o 5700 Series
 - o 5700 SL Series
 - o 6700 Series

- 6700 SL Series
 - 7700 Series
 - 8700 Series
- **New systems** for 700 Series Final Tier IV models
- Autotronic 4 Dyna VT
 - Autotronic 5 Dyna 4
 - Autotronic 5 Dyna 6
 - Autotronic 5 Linkage
 - DCC / DCC3 Instrument cluster
 - EEM4F – EDC 17 CV41 Sisu Engine

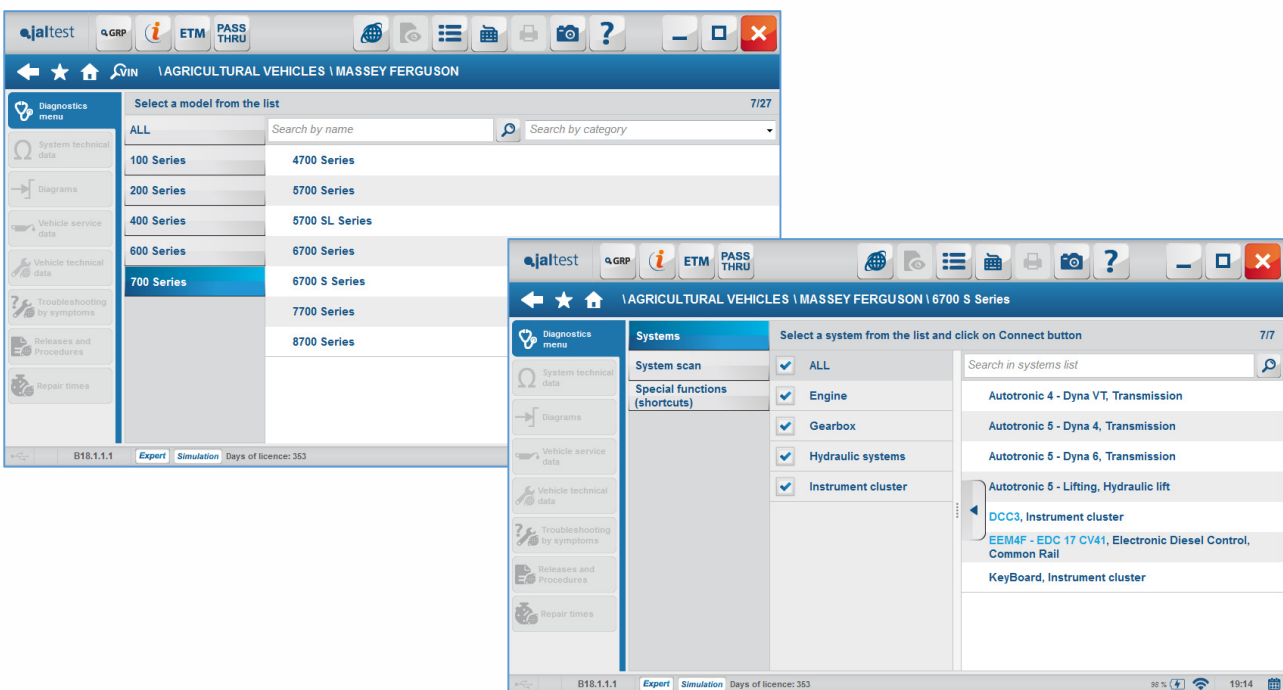


Image 37 New models and systems for Massey Ferguson 700 Series

- **New calibrations** in all 700 Series Final Tier IV models

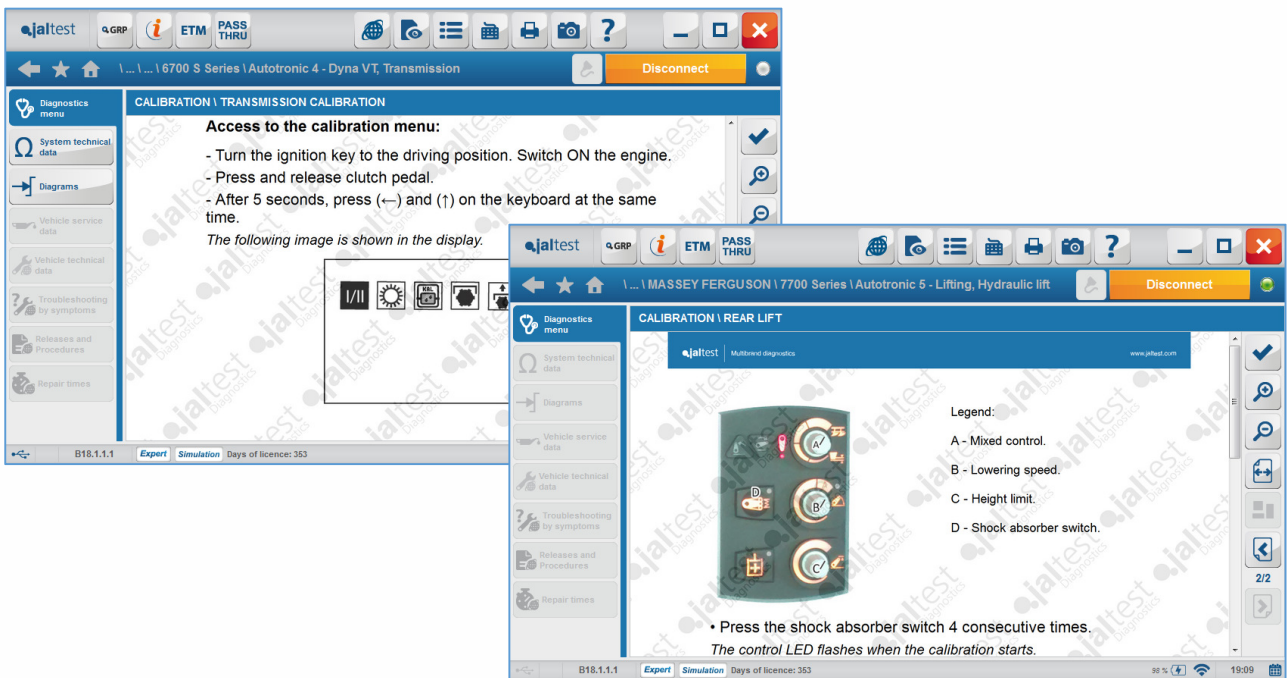


Image 38 Calibrations in Massey Ferguson 700 Series

- **New Maintenance system** available in 5600, 6600, 7600 and 8600 Series

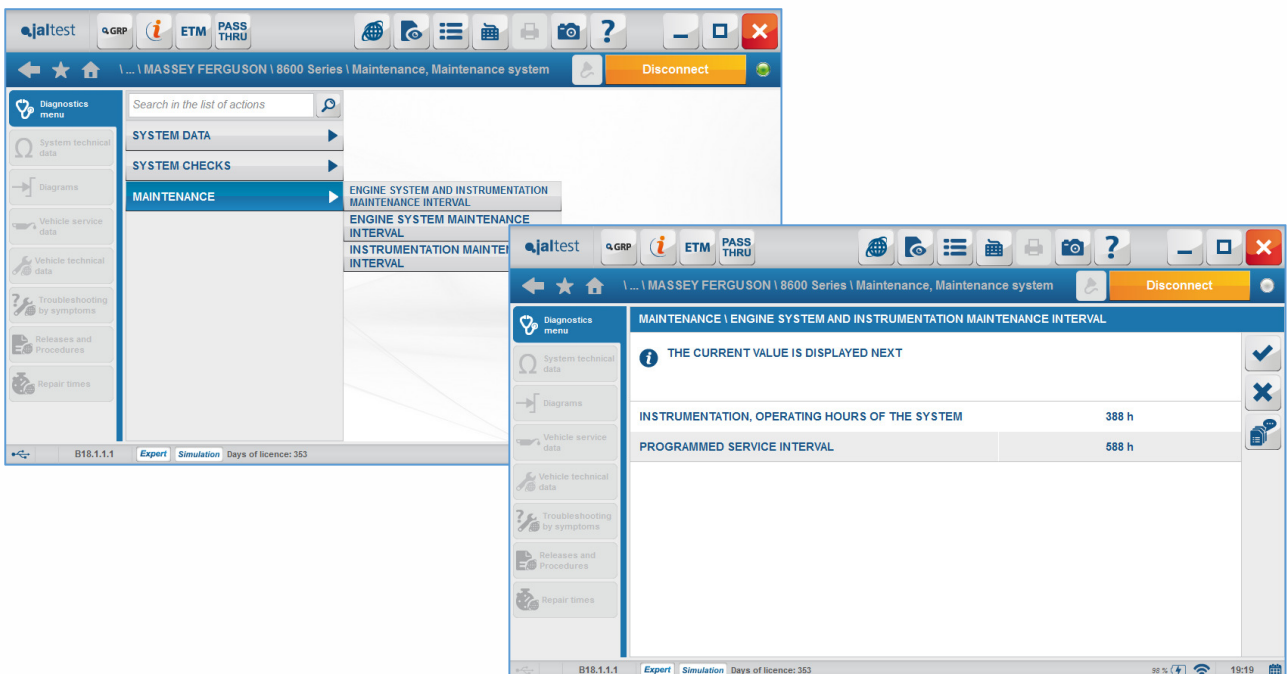


Image 39 New maintenance system in Massey Ferguson 600 Series

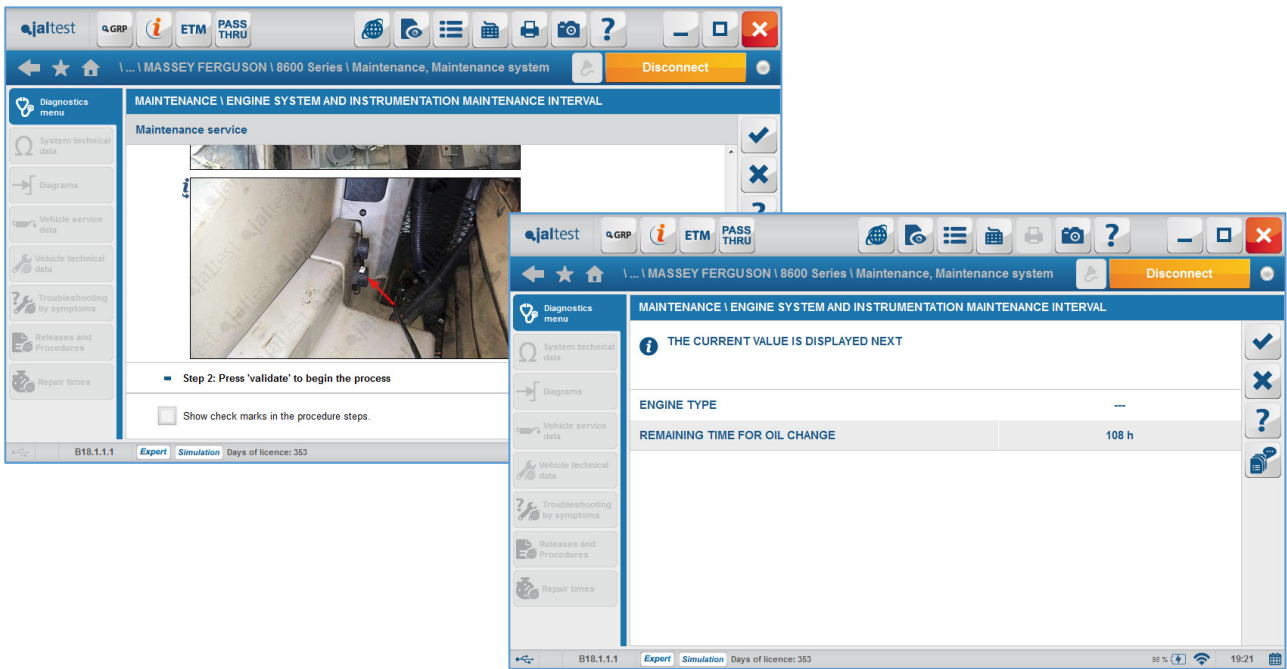


Image 40 Step-by-step instructions to carry out the cluster and engine maintenance

- New **wiring diagrams** and **System technical data** for the new systems

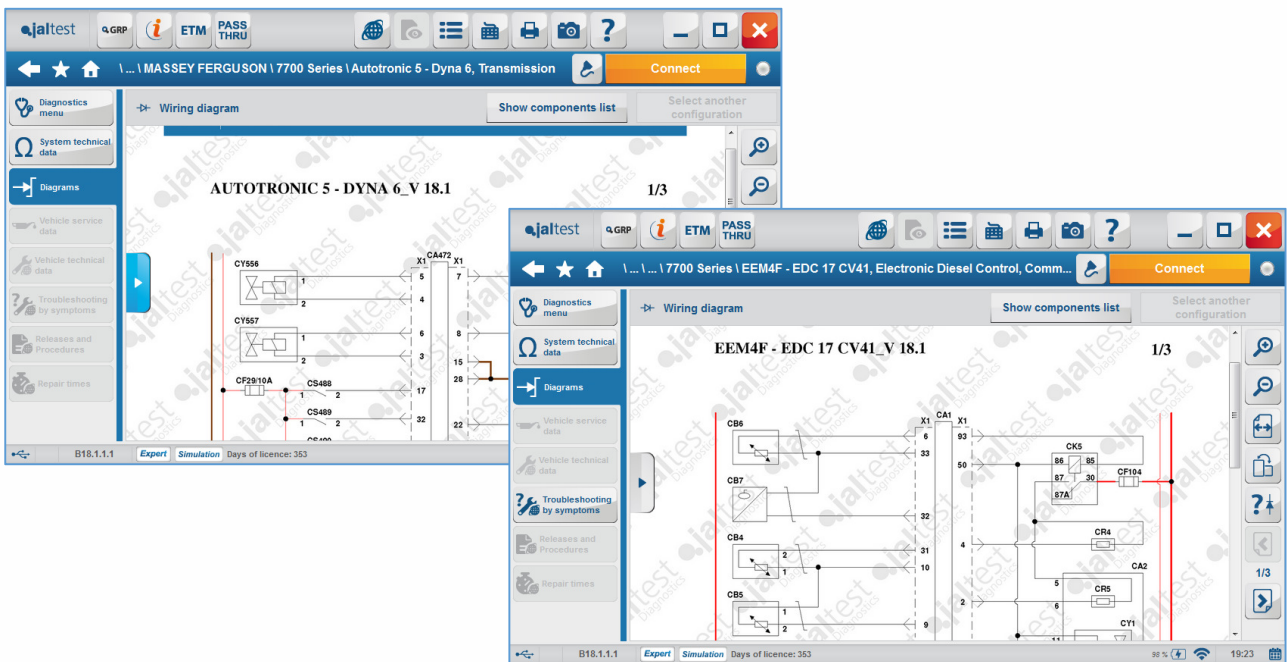


Image 41 Wiring diagrams in the new Massey Ferguson systems

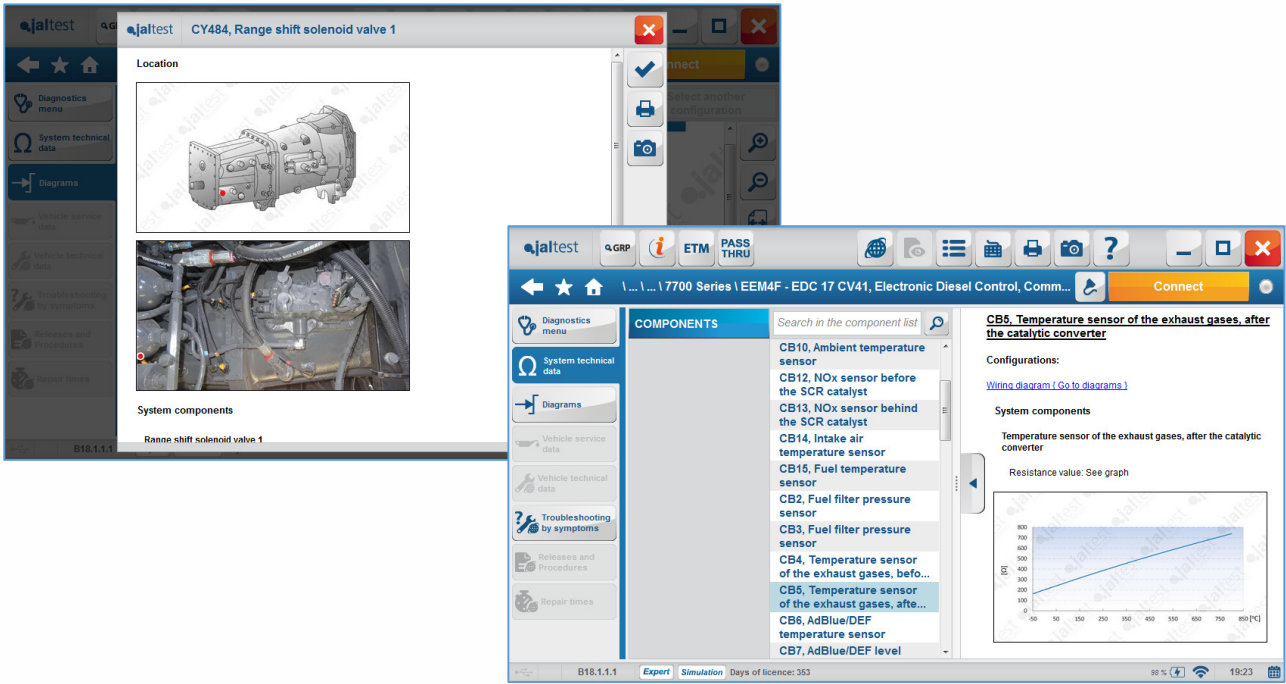


Image 42 Technical data in the new Massey Ferguson systems

3.6. URSUS

- **New models:** C Series Interim and Final Tier IV
 - o C-3110
 - o C-3150 Power
 - o C3150 V
 - o C-380
 - o C-385

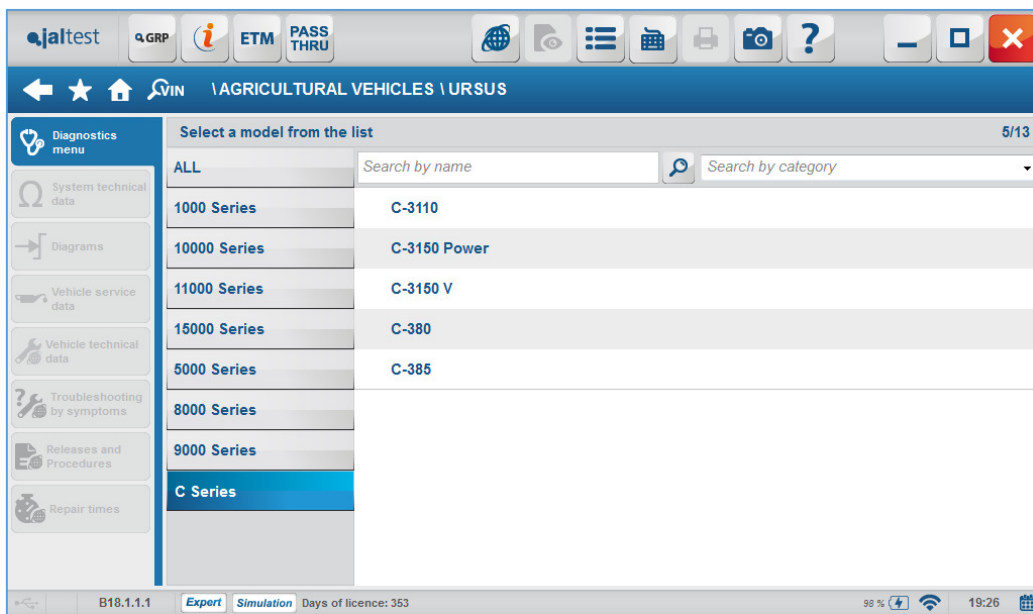


Image 43 New URSUS models

- **New engine system:** Perkins 854E

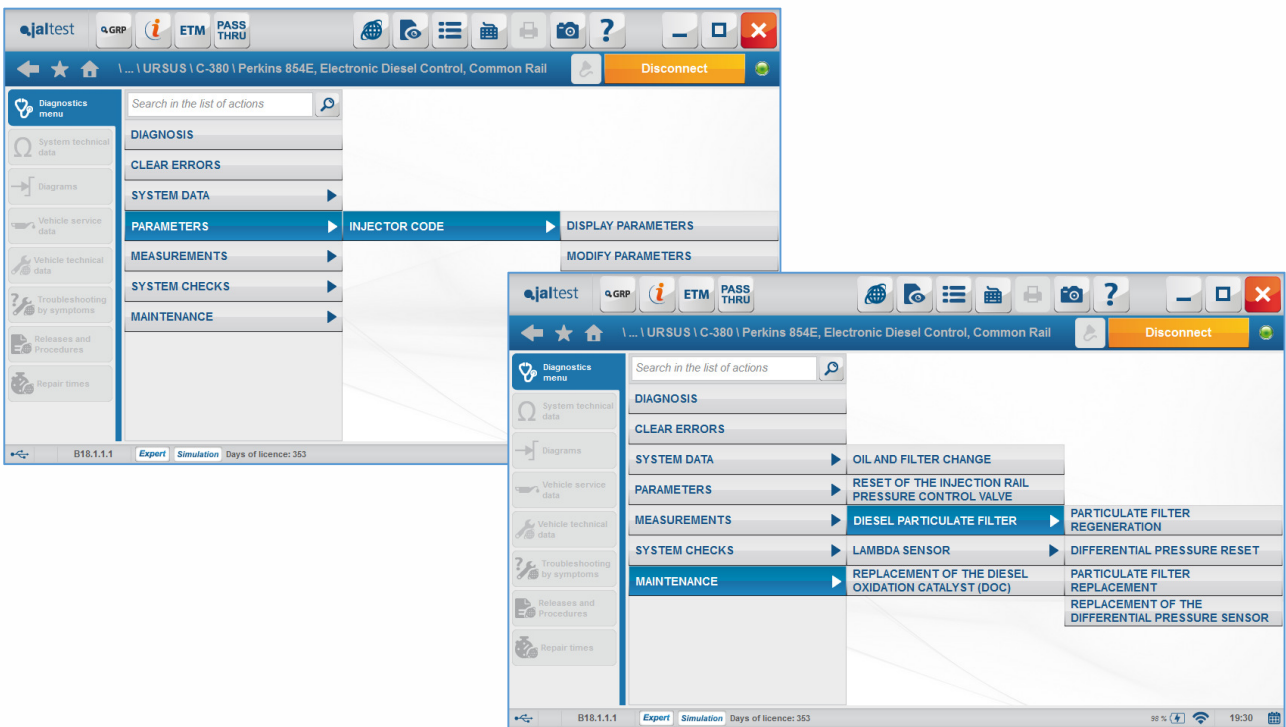


Image 44 Advanced functions in Perkins 854E engine

- **New engine system:** Deutz EMR4 EDC 17 CV52

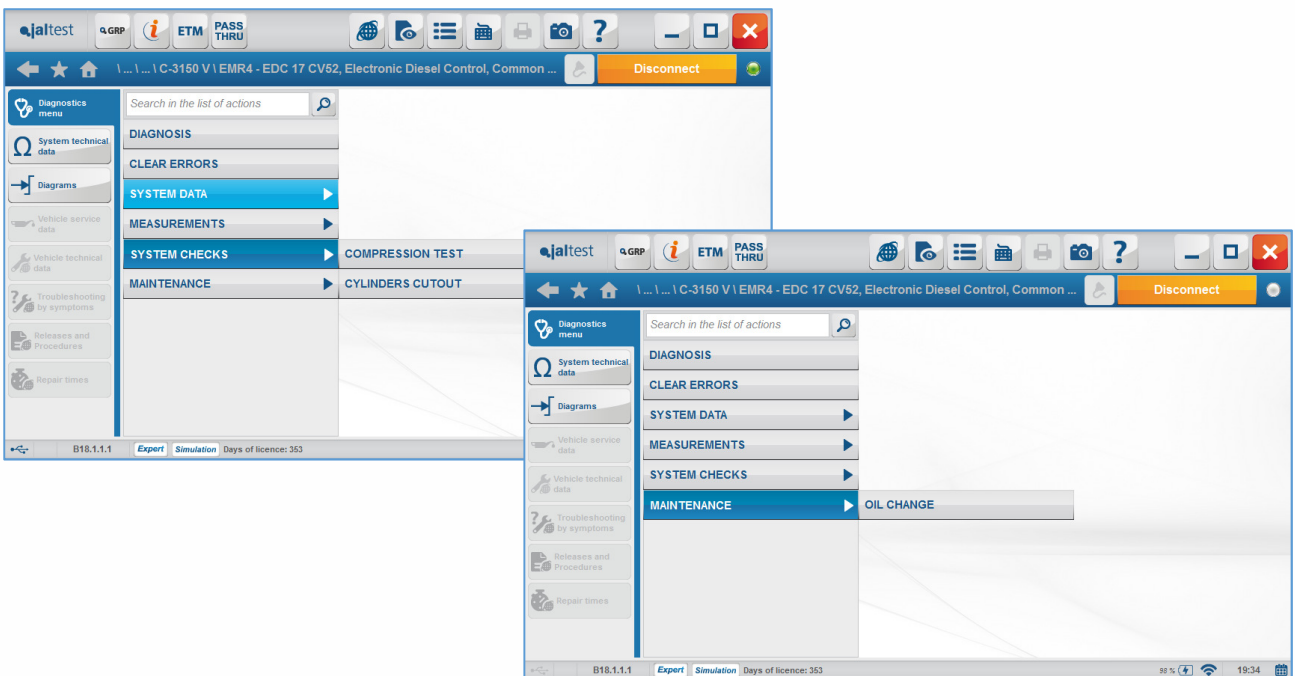


Image 45 Advanced functions in Deutz EMR4 EDC 17 CV52 engine

- New **wiring diagrams and technical data** in Deutz EMR4 EDC 17 CV52 engine system

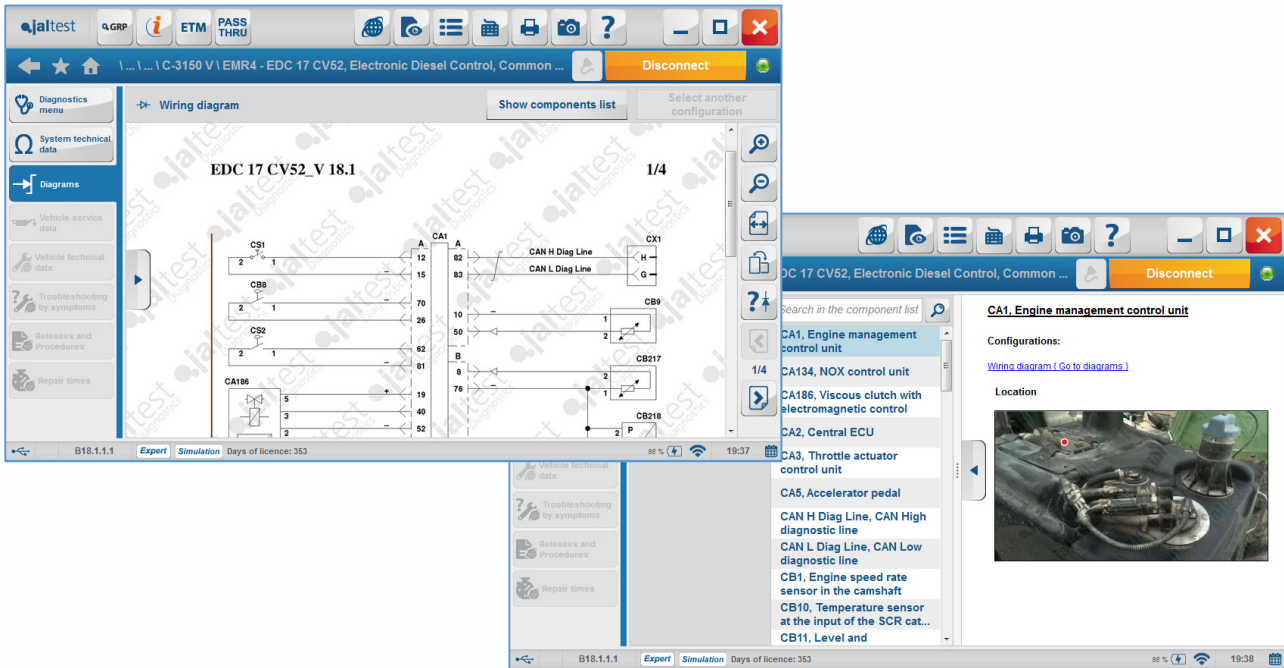


Image 46 Wiring diagrams and technical data in Deutz EMR4 EDC 17 CV52 engine

3.7. Valtra

- New calibrations in all N Series and T Series models, **PowerShift and CVT**

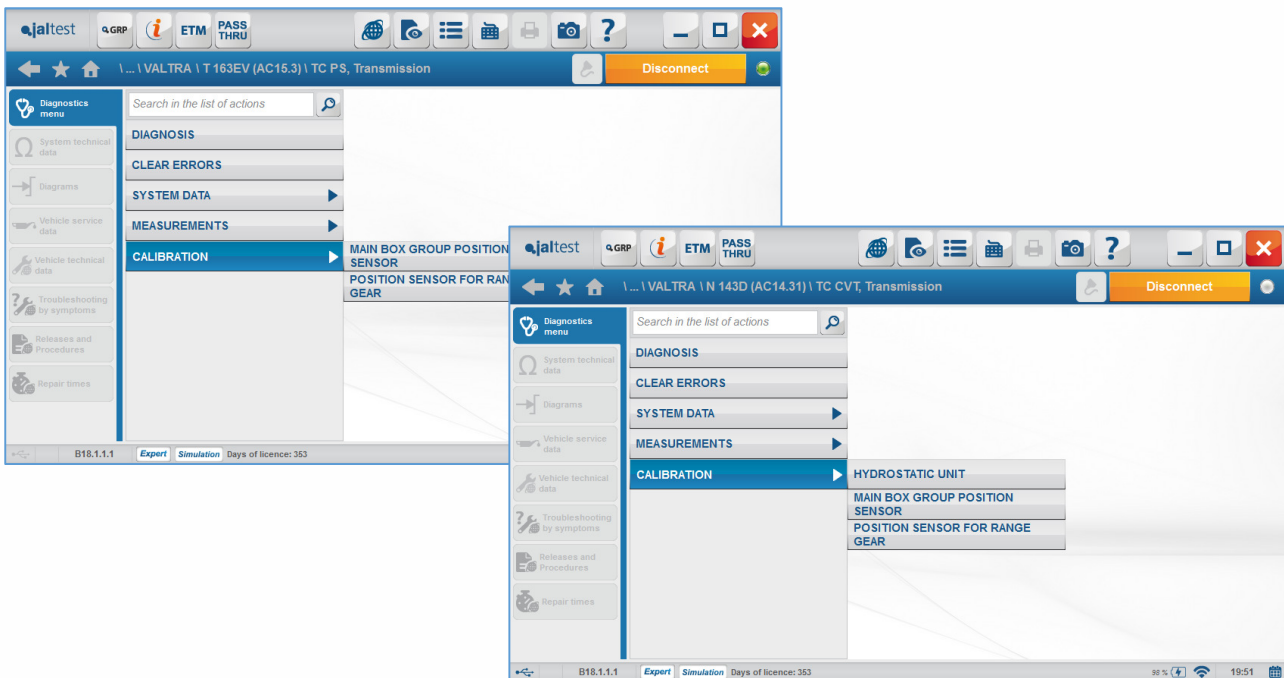


Image 47 New calibrations for Valtra



www.jaltest.com
www.jaltest-telematics.com

