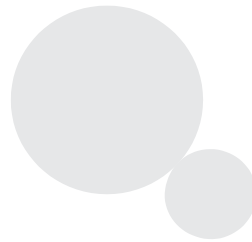


Jaltest AGV17.2 Innovations



www.jaltest.com



Index

INDEX	2
1. JALTEST AGV IN NUMBERS	3
2. NEW SOFTWARE FUNCTIONS	4
2.1. NEW DIAGNOSIS REPORT CONFIGURATION	4
2.2. NEW TYPE OF STEP IN ACTIONS	4
2.3. PROXY SERVERS CONFIGURATION	5
3. NEW MODELS AND COVERAGE IMPROVEMENTS	6
3.1. CASE IH	6
3.2. CLAAS	9
3.3. FENDT.....	11
3.4. JONH DEERE	12
3.5. MERCEDES-BENZ.....	15
3.6. NEW HOLLAND.....	16
4. NEW HARDWARE	19
4.1. JDC 525A, RENAULT, CLAAS ADAPTER CABLE	19
4.2. JDC 526A, MORES FPT AND DEUTZ ADAPTER CABLE.....	19
4.3. OBD4, CAN BUS TERMINAL RESISTOR ADAPTER	20

1. Jaltest AGV in numbers

Jaltest AGV continues to evolve in order to be at the height of the technological changes in the agricultural sector. In every new version, the coverage is increased with new systems, models and brands; the graphic interface is improved also. Thanks to this remarkable work, Jaltest AGV becomes a benchmark in the sector of multibrand diagnostics tools.

GPR module, which increases the ability to manage the garage resources, is one of the greatest innovations. This new version 17.2 includes interesting improvements in “GRP Enterprise” with more and more functions.

A table which shows some of the most noteworthy data about the progress made in this application can be found below:

Version 17.2.1.1		
	New	Total
Models	205	765
Systems	913	4056
Systems with Technical Data	574	2166
Systems with Wiring Diagrams	499	2185
Systems with calibration functions	219	1019

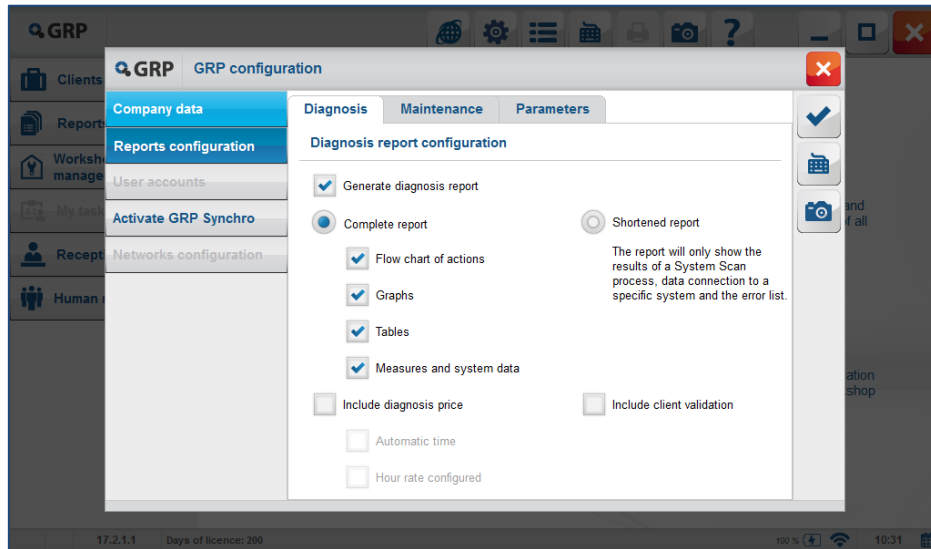
You can find below a summary of this Jaltest version update which includes, among others, the following innovations:

- New diagnosis report configuration.
- Significant improvements in GRP module.
- New Claas Interim and Final Tier IV models.
- New technical data of the vehicle in models of CNH group.

2. New software functions

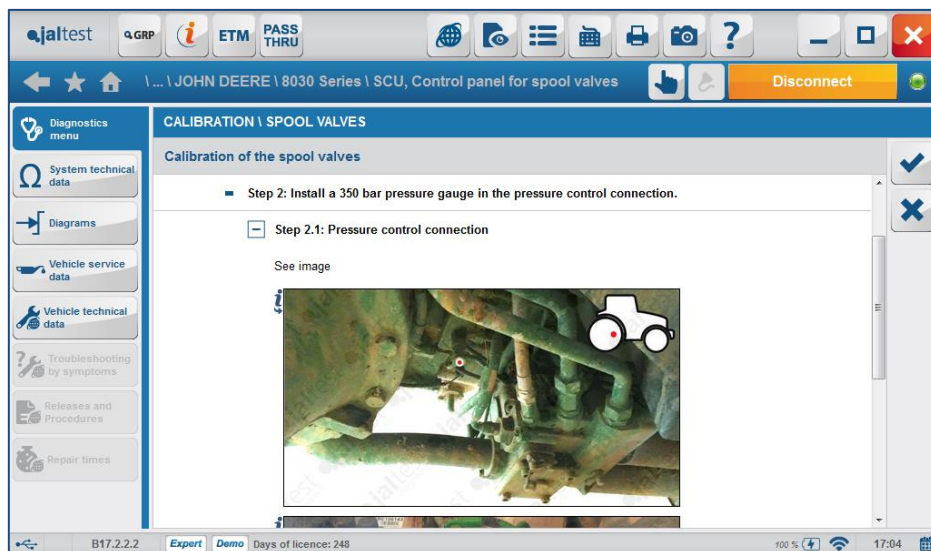
2.1. New diagnosis report configuration

In this new version 17.2, the diagnosis reports will be configurable, which will allow the user to choose what type of information he/she wishes to see.



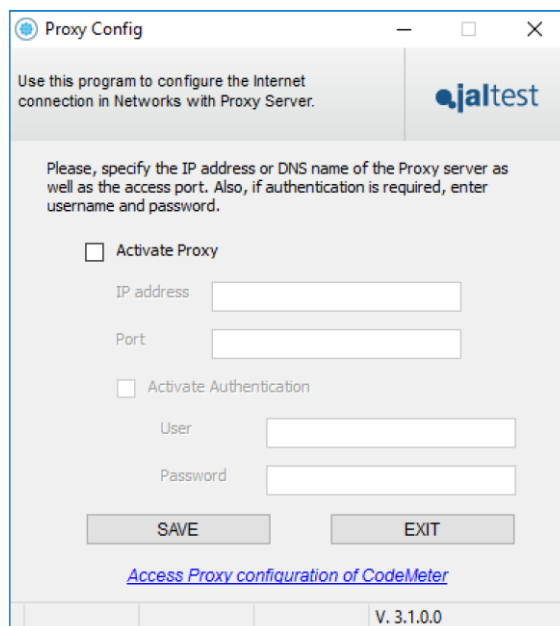
2.2. New type of step in actions

In certain actions, such as calibrations or parameter settings, it is necessary to take into account multiple factors before performing them. For this reason, a new type of step has been created, where various points to be considered will be displayed, in a clear and concise way, using drop-down fields.



2.3. Proxy servers configuration

Option available during the installation of the application.



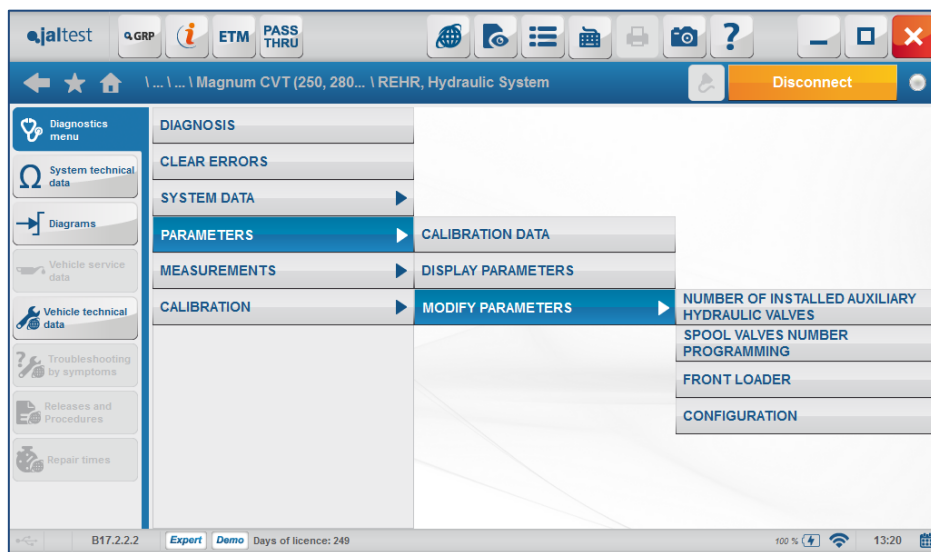
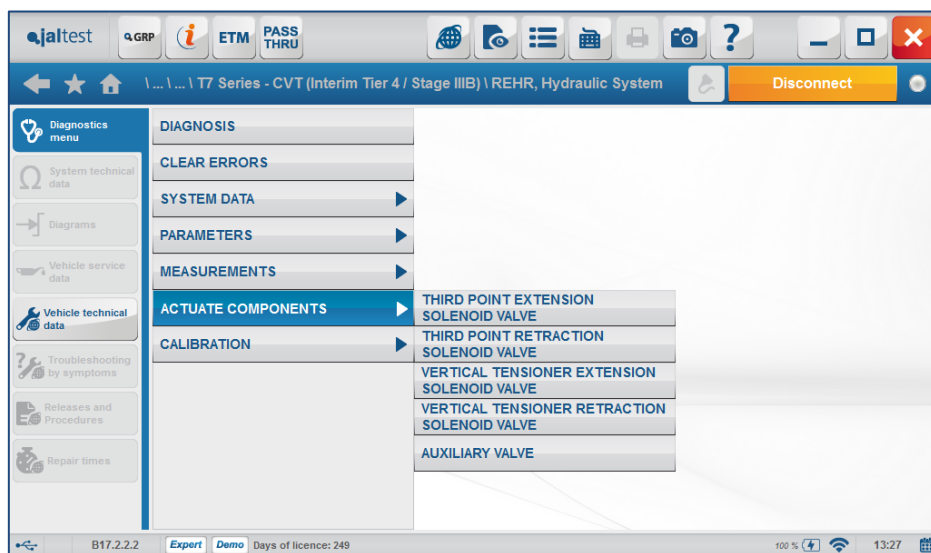
The image shows a Windows-style dialog box titled "Proxy Config". The window has a title bar with standard minimize, maximize, and close buttons. The main content area contains the following elements:

- A header section with the text: "Use this program to configure the Internet connection in Networks with Proxy Server." and the "jaltest" logo on the right.
- A paragraph of instructions: "Please, specify the IP address or DNS name of the Proxy server as well as the access port. Also, if authentication is required, enter username and password."
- A checkbox labeled "Activate Proxy".
- Two text input fields: "IP address" and "Port".
- A checkbox labeled "Activate Authentication".
- Two text input fields: "User" and "Password".
- Two buttons: "SAVE" and "EXIT".
- A blue hyperlink at the bottom: "[Access Proxy configuration of CodeMeter](#)".
- A version number "V. 3.1.0.0" in the bottom right corner.

3. New models and coverage improvements

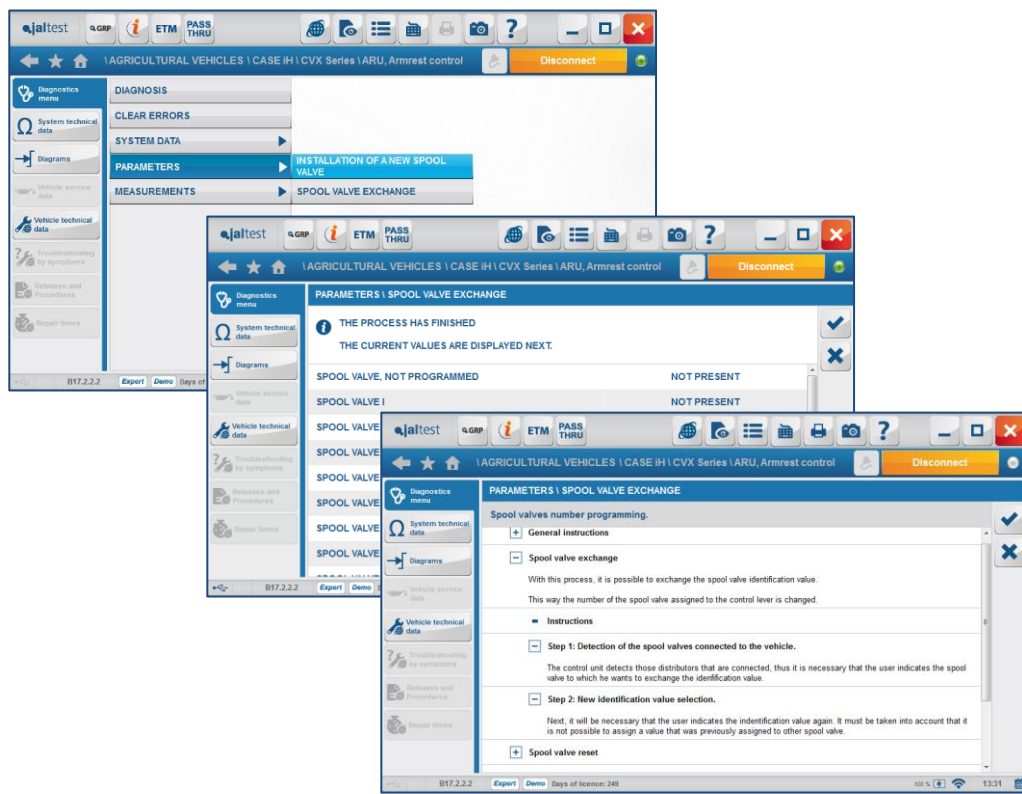
3.1. CASE iH

- **REHR**, Spool valves control.
Advanced diagnostics functions have been developed on the electronics control systems for the management of spool valves. These functions allow the user to check, exchange and replace the spool valves.



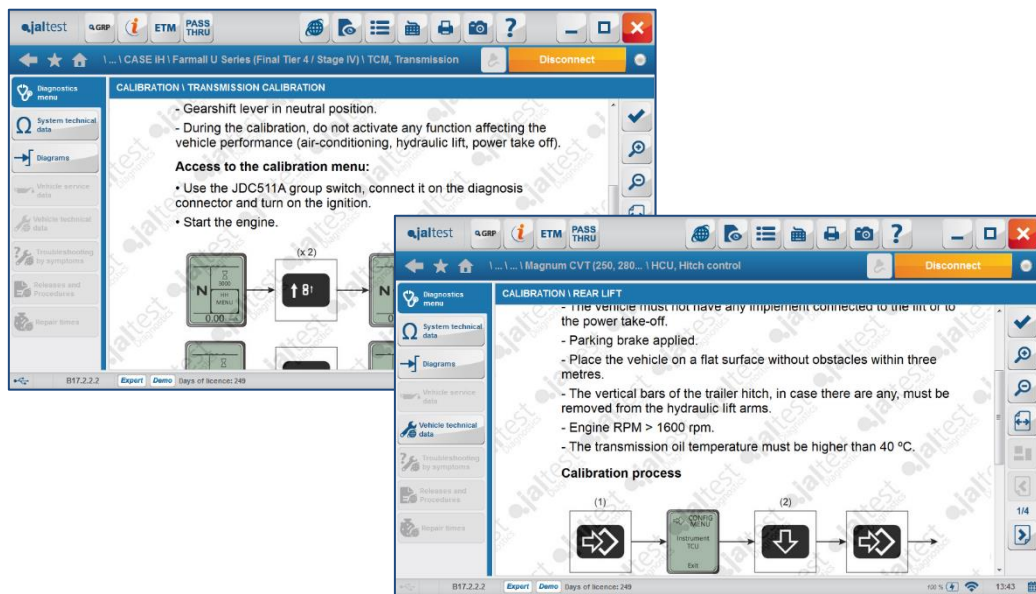
Functions developed on the models below:

- CASE Magnum CVT (235, 260, 290, 315, 340, 370)
 - CASE Magnum CVT (250, 280, 310, 340, 380)
 - CASE Magnum Full Power Shift (235, 260, 290, 315, 340)
 - CASE Magnum Full Power Shift (250, 280, 310, 340)
 - CASE Steiger Series
 - CASE Magnum CVT (180, 190, 210, 225)
 - CASE Magnum Full Power Shift (180, 190, 210)
 - CASE Maxxum – CVT
 - CASE Puma Series - 18/19x6 Full Power Shift
 - CASE Puma Series - 18/19x6 Full Power Shift
 - CASE Puma Series – CVT
 - CASE Maxxum - 16/17x16
 - CASE Maxxum - 16/17x16 - Efficient Power
 - CASE Puma Series – Multicontroller
- As with REHR systems, due to the electronic architecture of **CASE iH CVX** model, all those electronics systems check and management functions have been developed on **ARU** armrest system.

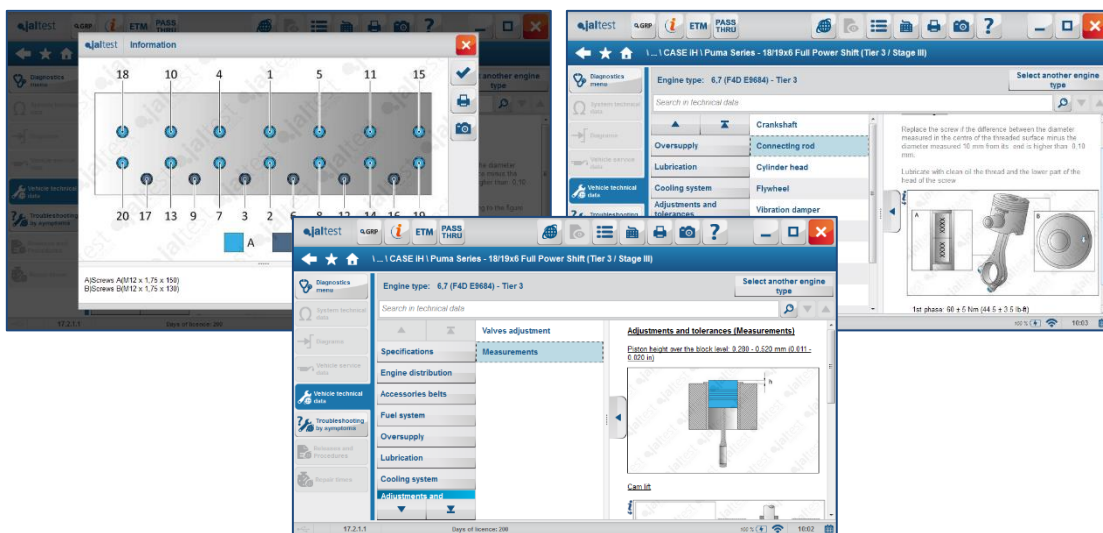


June 2017

- Development of new transmission and hydraulic lift calibrations available for the models below:
 - CASE Magnum CVT (235, 260, 290, 315, 340, 370)
 - CASE Magnum Full Power Shift (235, 260, 290, 315, 340)
 - CASE Magnum CVT (250, 280, 310, 340, 380)
 - CASE Magnum Full Power Shift (250, 280, 310, 340)
 - CASE Steiger Series



- During this version, it has been worked on the development of the main vehicle technical data in the whole range of models of the brand, from Tier II to Final Tier IV.

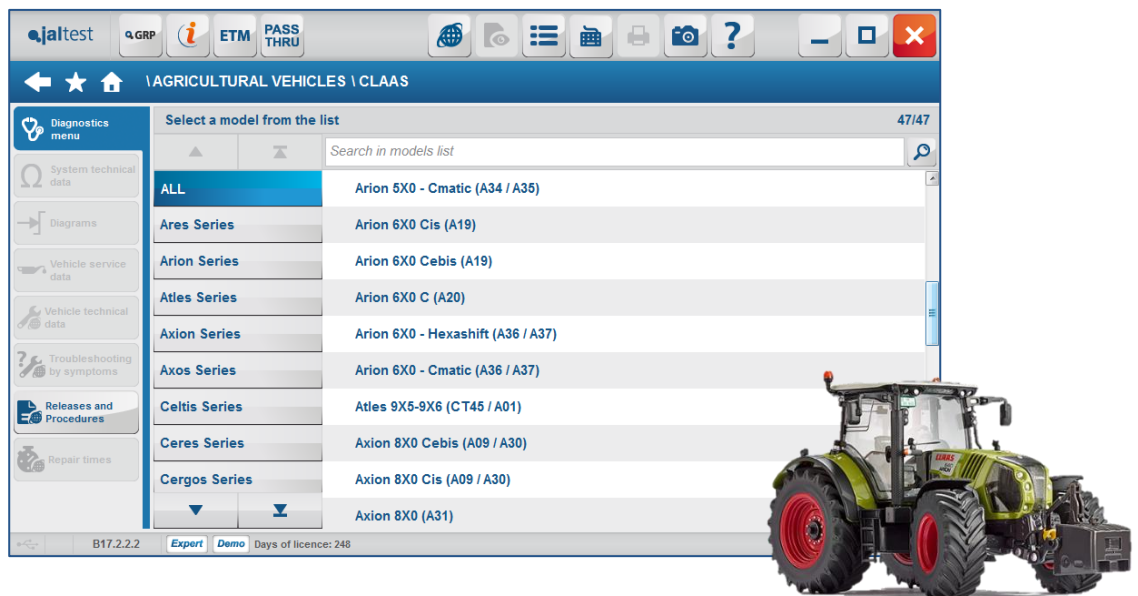


3.2. CLAAS

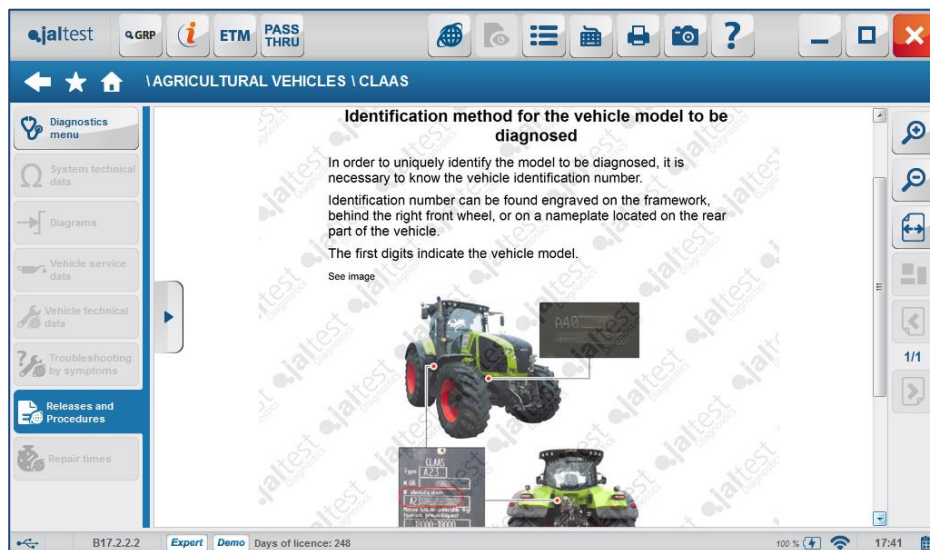
During this version, the brand has been restructured by improving its coverage with the new Final Tier IV models. The models are ordered depending on the vehicle identification number so that the model is unequivocally selected.

Down below, some of the main improvements of the brand are listed:

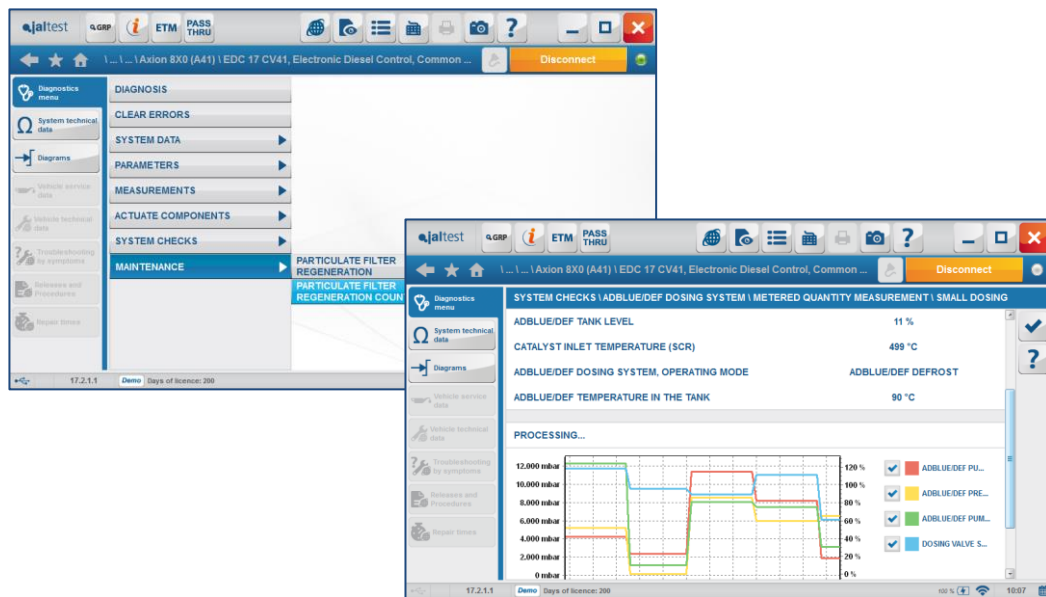
- In this new version, coverage in 47 models with 201 systems is offered.



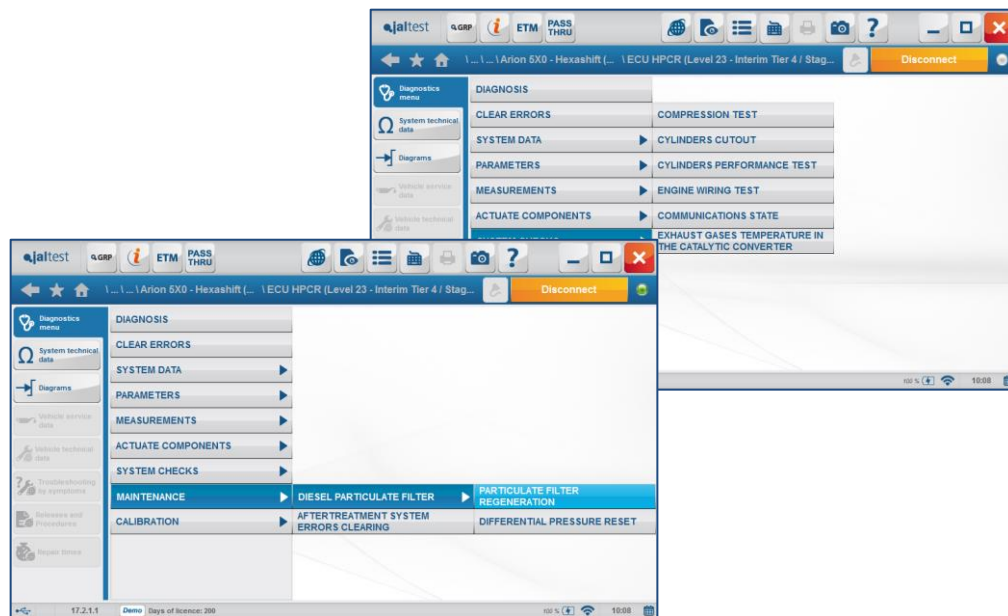
- Unique identification of the models through chassis number.



- Full Final Tier IV **FPT-EDC 17 CV41** engine system development.



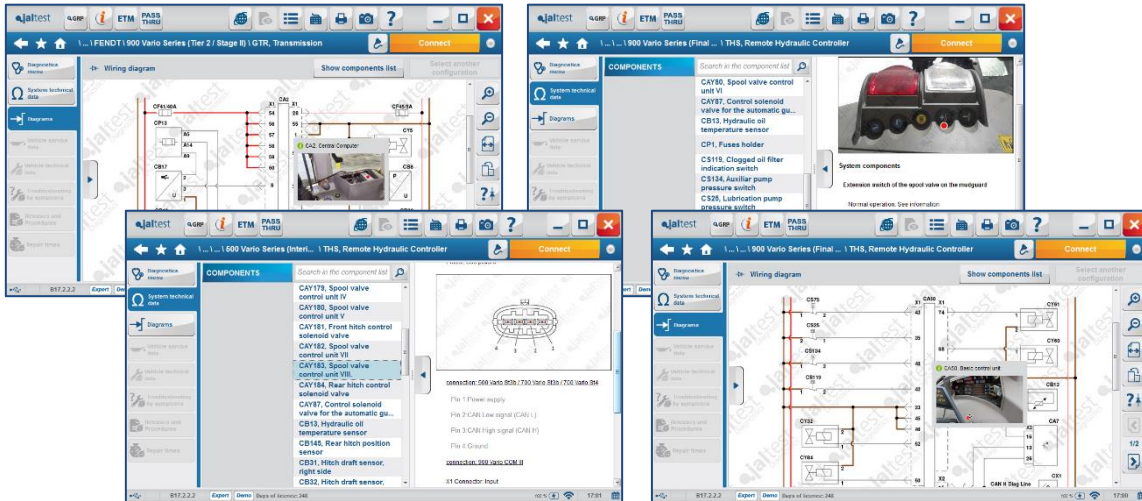
- Full Interim Tier IV **John Deere – Level 23** engine system development.



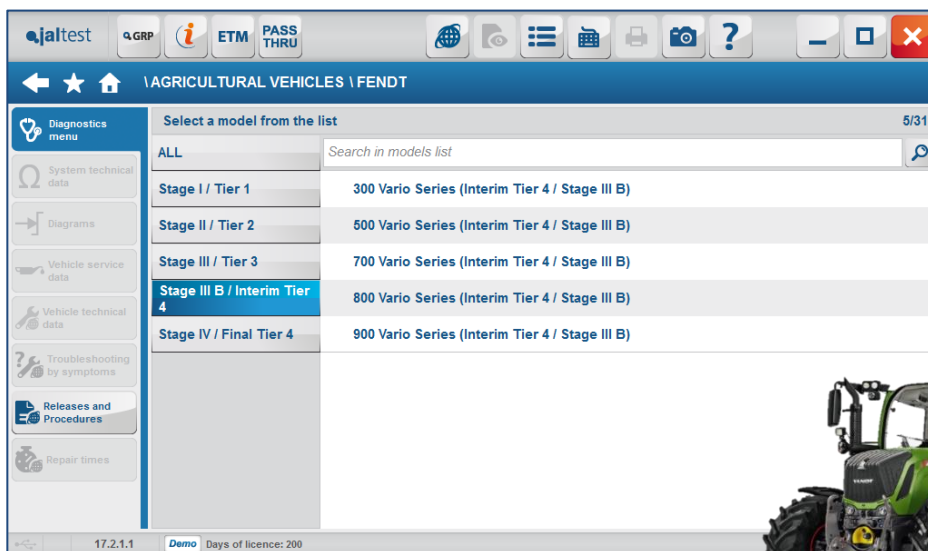
- New transmission and instrumentation calibrations available in Interim y Final Tier IV models.

3.3. FENDT

Continuing the trend of providing further technical information, during 17.2 version, new wiring diagrams and system technical data, for several models of the brand, have been developed.



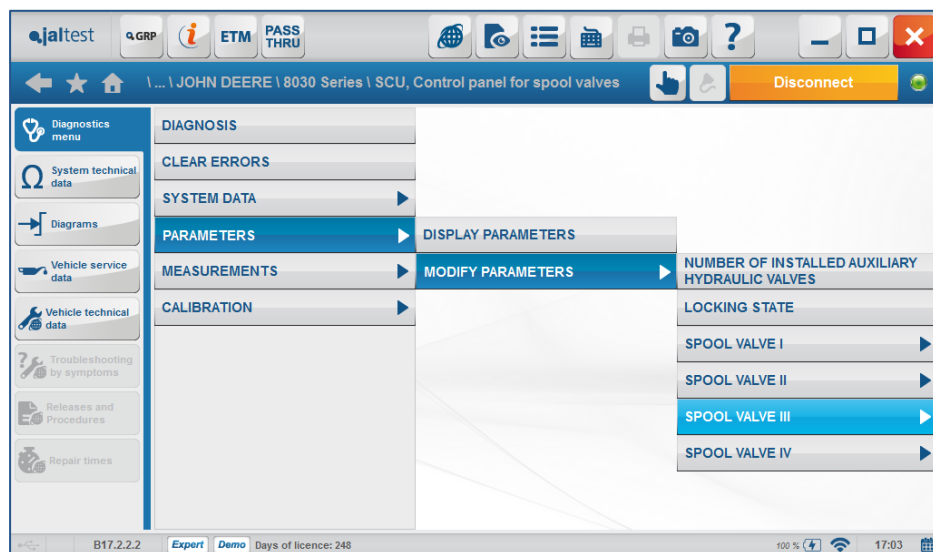
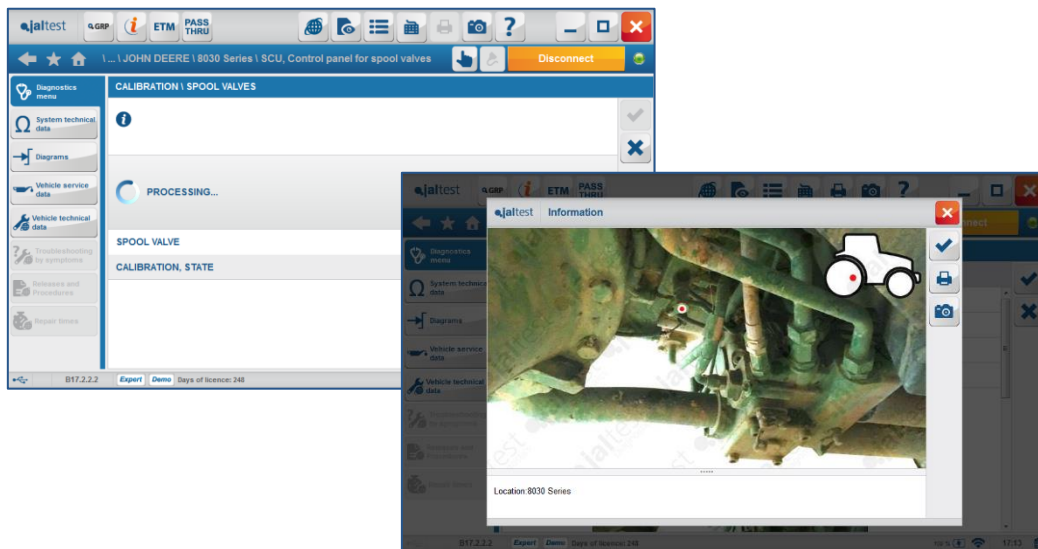
- Full development of new Interim y Final Tier 4 models.



3.4. JONH DEERE

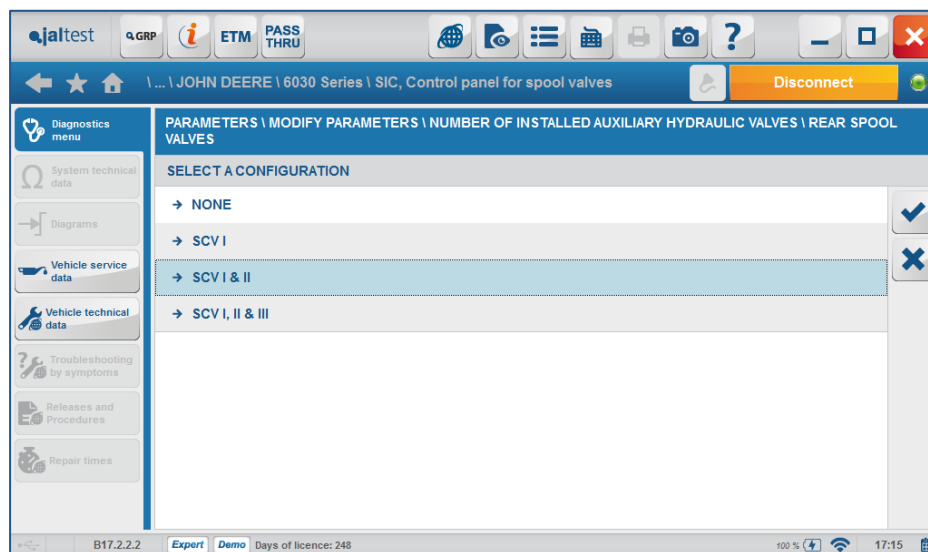
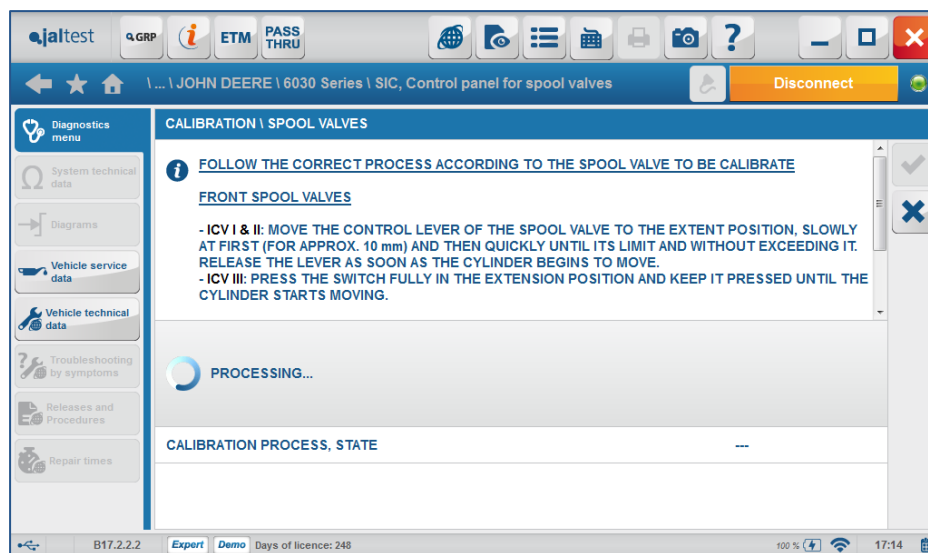
The benchmark brand has been increasingly developed, as in the last previous versions. Regarding the coverage, as in the case of those brands of CNH group, during this version, we have focused on the main hydraulic control systems.

- **SCU**, Improvement of the system. Spool valves calibration and modification of parameters development.



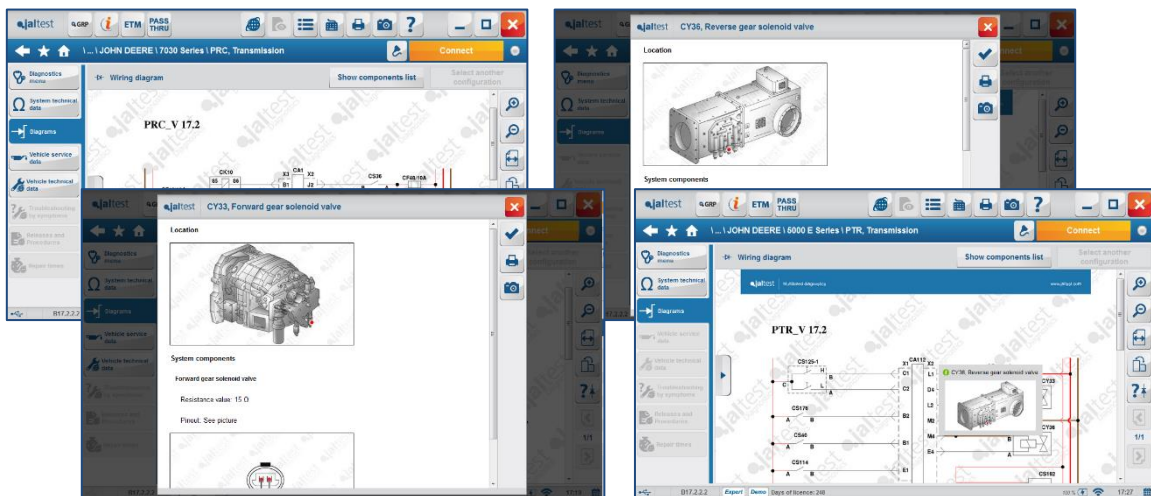
Functions developed in series:

- 8030 Series
 - 7030 Series
 - 7020 Series
 - 7J Series
- **SIC**, Improvement of the system. Spool valves calibration and modification of parameters development.



Functions developed in the series below:

- 6020 Series
 - 6030 Series
 - 7020 Series
 - 7030 Series
-
- New Full Power Shift (PTP) transmission calibrations.
 - New wiring diagrams and system technical data available in several models of the brand:



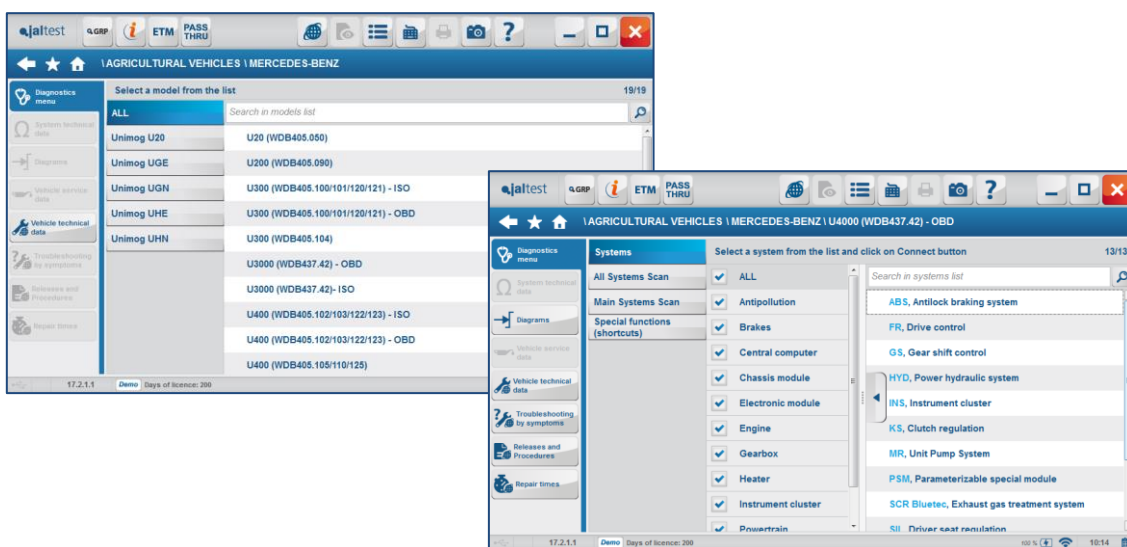
3.5. MERCEDES-BENZ



Agricultural works include, on the one hand, the most diverse works in the farmlands. On the other hand, there is an increasing volume of transport at increasingly distances. Mercedes-Benz offers solutions for these tasks in its vehicles Unimog. Among the main agricultural works of these models, the following are included:

- Agricultural Works performance which combine a front mower with two rear mowers.
- “*Sprayer*” applications for the treatment of crops.

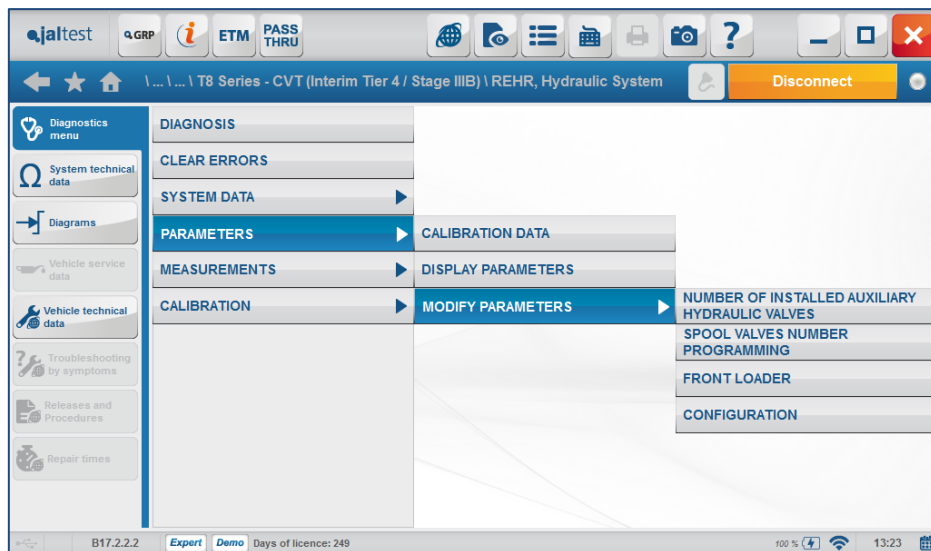
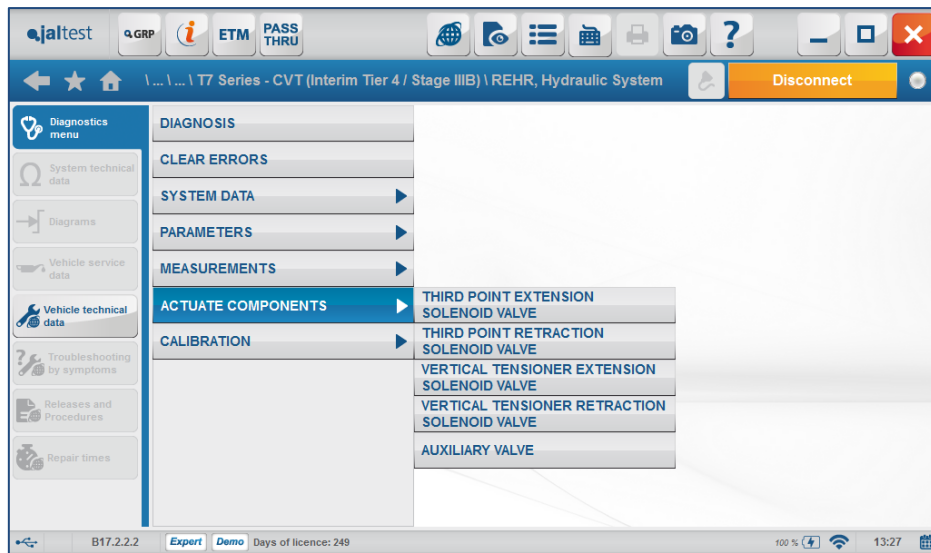
Due to this situation, in version 17.2, Mercedes-Benz brand appears for the first time in Jaltest AGV module. All models of Unimog brand are available, which include from Euro 2 to Euro 6, with advanced diagnostics features in all of them.



3.6. NEW HOLLAND

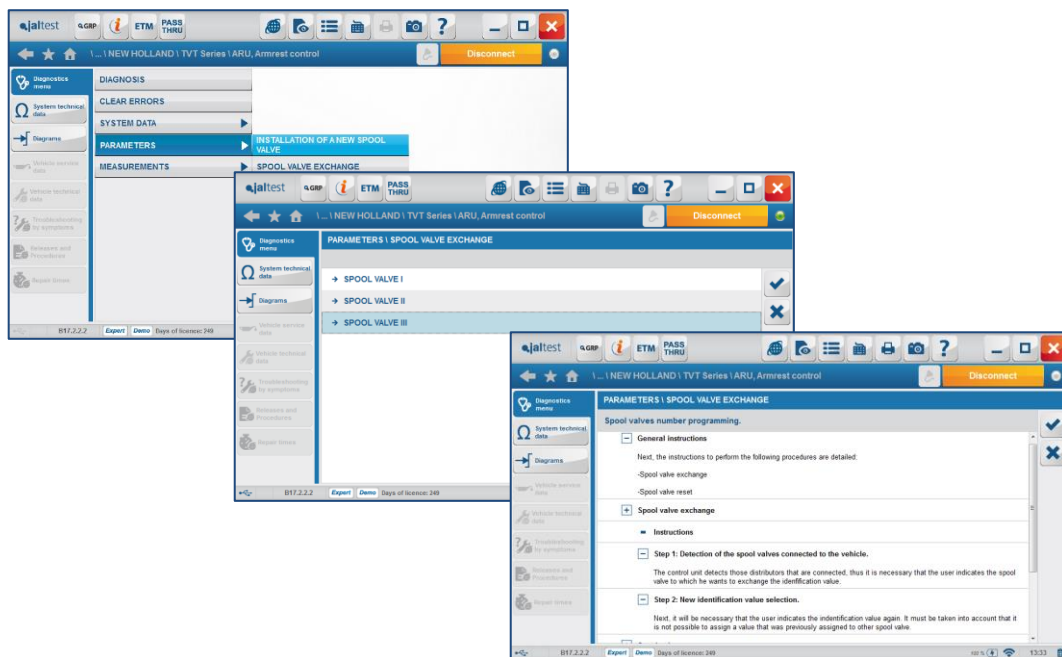
As with CASE iH brand, all those models of CNH group have experienced a positive development in advanced spool valves features. The improvements below should be highlighted:

- **REHR**, Spool valves control.
Advanced diagnostics functions have been developed on the electronics control systems for the management of spool valves. These functions allow the user to check, exchange and replace the spool valves.

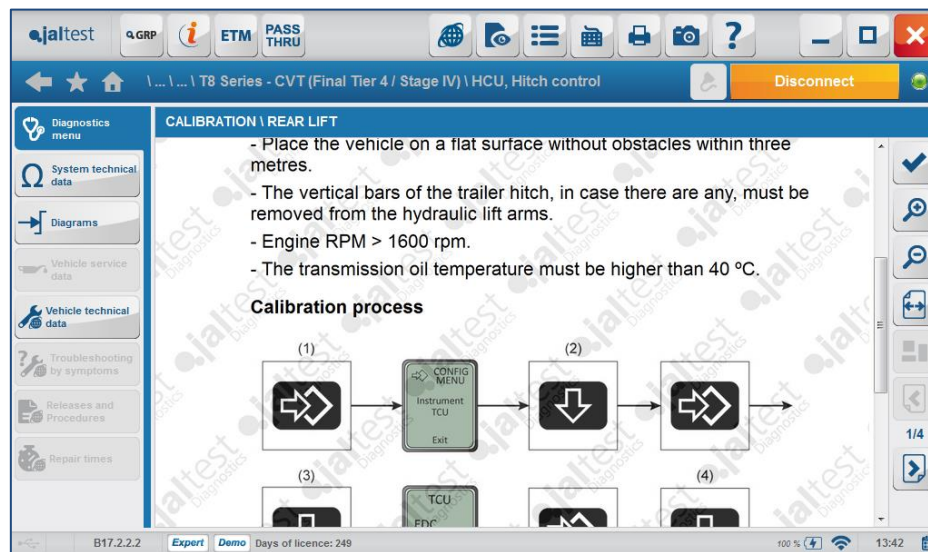


Functionalities developed in the models below:

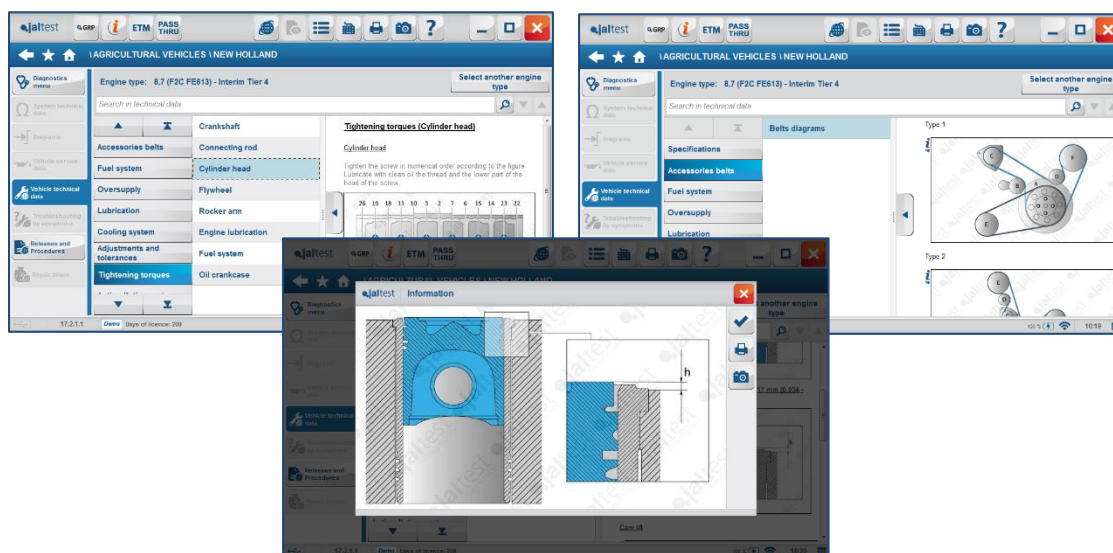
- NEW HOLLAND T8 Series - CVT
 - NEW HOLLAND T8 Series - Full Power Shift
 - NEW HOLLAND T9 Series
 - NEW HOLLAND T7 Series - 18/19x6 Power Command (Armrest)
 - NEW HOLLAND T7 Series - 18/19x6 Range Command (Armrest)
 - NEW HOLLAND T7 Series – CVT
 - NEW HOLLAND T7000 Series – CVT
 - NEW HOLLAND T6 Series - 16/17x16
 - NEW HOLLAND T6000 Series - 16/17x16
 - NEW HOLLAND T6000 Series - Power Command
 - NEW HOLLAND T6000 Series - Range Command
 - NEW HOLLAND T7 Series - 18/19x6 Power Command
 - NEW HOLLAND T7 Series - 18/19x6 Range Command
 - NEW HOLLAND T7000 Series - Power Command
 - NEW HOLLAND T6 Series – CVT
 - NEW HOLLAND T6000 Series - Power Command (Armrest)
 - NEW HOLLAND T6000 Series - Range Command (Armrest)
 - NEW HOLLAND T7000 Series - Power Command (Armrest)
- As with the REHR systems, due to the electronic architecture of **New Holland TVT** model, all those electronics systems check and management functions have been developed on the **ARU** armrest system.



- Development of new transmission calibrations and hydraulic lift available in this models:



- During this version, we have been working on the development of the main vehicle technical data in the whole range of models of the brand, from Tier II to Final Tier IV.

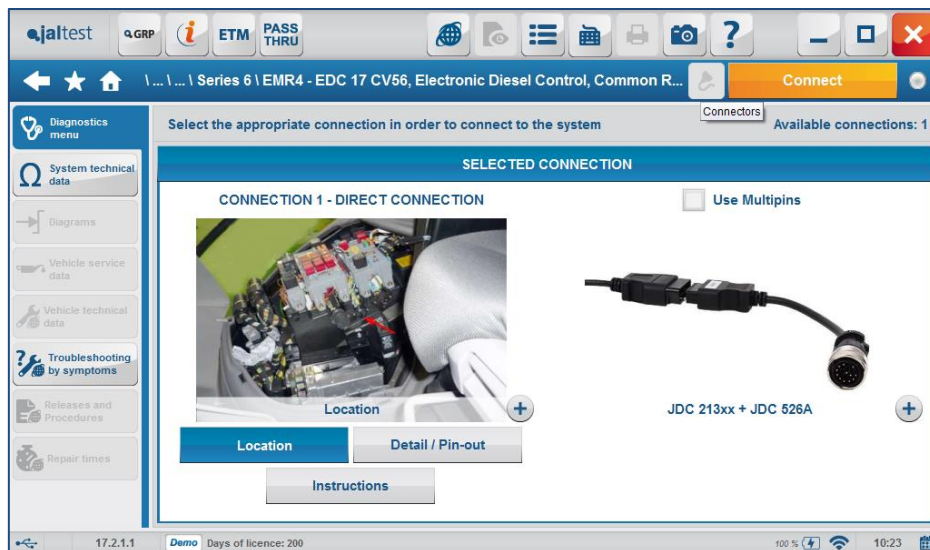


4. New Hardware

4.1. JDC 525A, Renault and Claas adapter cable



4.2. JDC 526A, FPT and Deutz engines adapter cable



4.3. OBD4, CAN Bus terminal resistor adapter

In some old models of Claas and Renault brands, it is necessary to switch the CAN Bus off using the OBD4 adapter. This adapter will be attached somewhere between the vehicle adapter and the JDC 212M3 connector.

