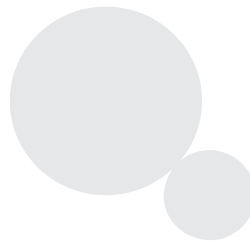


# Jaltest OHW Coverage v.17.2

---



*[www.jaltest.com](http://www.jaltest.com)*



## Index

---

.....	1
<b>INDEX</b> .....	<b>2</b>
<b>1. JALTEST OHW INTRODUCTION</b> .....	<b>4</b>
<b>2. COVERAGE AND MAIN FUNCTIONS</b> .....	<b>5</b>
2.1. OHW AND CONSTRUCTION VEHICLES.....	5
2.1.1. ASTRA .....	5
2.1.2. BAE SYSTEM .....	6
2.1.3. BELL .....	6
2.1.4. BOBCAT .....	7
2.1.5. BOSCH REXROTH .....	7
2.1.6. BUSHMASTER .....	8
2.1.7. CASE CE.....	8
2.1.8. CATERPILLAR .....	9
2.1.9. COMETTO .....	11
2.1.10. CVS FERRARI .....	12
2.1.11. FIAT - KOBELCO .....	12
2.1.12. GROVE .....	12
2.1.13. HAMM .....	13
2.1.14. HITACHI .....	13
2.1.15. HYSTER .....	14
2.1.16. HYUNDAI CE .....	14
2.1.17. KALMAR.....	14
2.1.18. KOBELCO .....	15
2.1.19. KOMATSU.....	15
2.1.20. KRAMER.....	16
2.1.21. KUBOTA .....	16
2.1.22. LIEBHERR .....	17
2.1.23. MANITOU .....	17
2.1.24. MAX COM.....	18
2.1.25. MERCEDES BENZ .....	18
2.1.26. NEW HOLLAND CE .....	19
2.1.27. O&K .....	20
2.1.28. OTO .....	20
2.1.29. PERLINI .....	20
2.1.30. PETTIBONE .....	20
2.1.31. RANDON .....	21
2.1.32. TADANO FAUN .....	21
2.1.33. TERBERG.....	22
2.1.34. TEREX – DEMAG .....	22
2.1.35. URO .....	23
2.1.36. VOLVO CE .....	23

June 2017

# Eclipse




The widest multi-brand diagnostics choice

2.1.37.	XCMG.....	25
2.1.38.	XTREME .....	25
2.2.	STATIONARY ENGINES.....	26
2.2.1.	CATERPILLAR .....	26
2.2.2.	CUMMINS.....	27
2.2.3.	DETROIT DIESEL-MBE .....	28
2.2.4.	DEUTZ.....	28
2.2.5.	ISUZU.....	29
2.2.6.	IVECO-FTP.....	29
2.2.7.	JOHN DEERE .....	30
2.2.8.	KUBOTA .....	30
2.2.9.	MAN .....	31
2.2.10.	MERCEDES-BENZ .....	31
2.2.11.	MTU.....	32
2.2.12.	PERKINS .....	33
2.2.13.	SCANIA.....	33
2.2.14.	SISU .....	34
2.2.15.	VM MOTORI .....	34
2.2.16.	VOLVO PENTA.....	35
2.3.	STREET SWEEPERS.....	36
2.3.1.	ASH .....	36
2.3.2.	AUSA.....	36
2.3.3.	BUCHER .....	37
2.3.4.	DULEVO .....	37
2.3.5.	EUROVOIRE .....	37
2.3.6.	MATHIEU-YNO.....	37
2.3.7.	RAVO .....	38

## 1. Jaltest OHW introduction

This Jaltest module has been developed to diagnose Off-Highway and construction vehicles such as cranes, excavators, haulers, stationary engines or street sweepers and road maintenance equipment. Jaltest OHW has become a benchmark tool in the sector thanks to its wide coverage, technical information and repair services.

Here below a table with the main data of coverage available in version 17.2 is shown. For further information about Jaltest coverage and other news, please visit **Jaltest Report** or contact the adequate staff through the tool distribution network.

Version 17.2				
				Total
<b>Brands</b>	39	17	7	63
<b>Models</b>	201	37	19	257
<b>Systems</b>	1267	174	29	1470



## 2. Coverage and main functions

---

### 2.1. OHW and construction vehicles

Classified in this category, we can find all those vehicles and/or machinery categorised as:

- Self-propelled cranes
- Earthmoving machinery
- Military vehicles

Next, each of the brands available in the application as well as a description of the coverage available in each of them are listed.



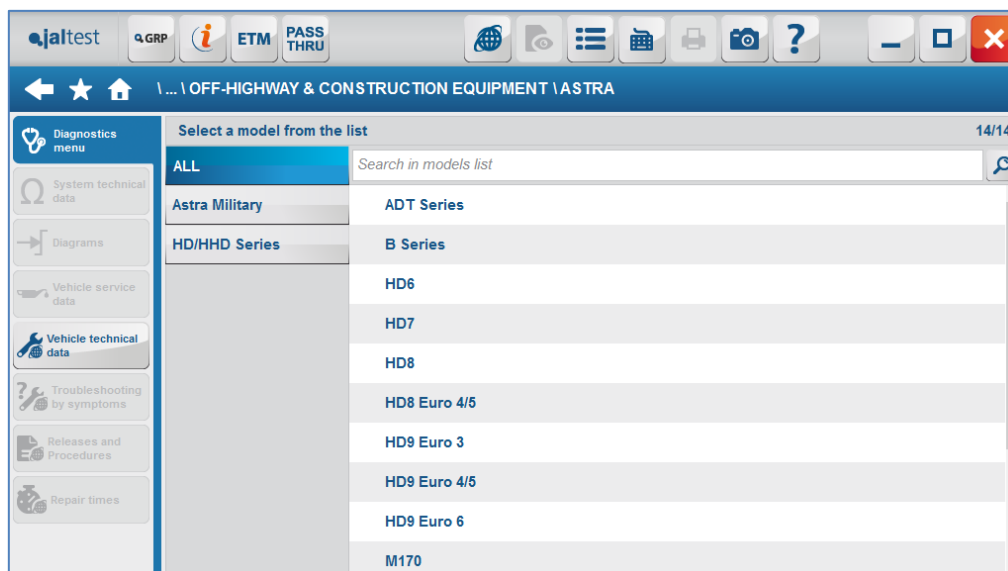
#### 2.1.1. ASTRA

##### *Coverage and main functions*

Cosntruction and mining equipment manufacturer, owned by the Industrial CNH group.

In version 17.2, coverage for 14 models of the brand shall be provided. Among the systems available in Jaltest, those with advanced diagnostics functions listed below should be highlighted:

- Engine (Iveco)
- Transmission (ZF)
- Instrument cluster
- Central Computer



## 2.1.2. BAE SYSTEM

### *Coverage and main functions*

Supplier of some of the most advanced defence solutions in the world.

In version 17.2, coverage for a single model, **RG-31 Mk5E**, is available. Among the systems available, those listed below should be highlighted:

- Engine (Cummins)
- Transmission (Allison)
- Brakes (Wabco)

## 2.1.3. BELL

### *Coverage and main functions*

Mining equipment manufacturer. Among its products, a wide range of articulated trucks (ADT) used for aggregates transport should be highlighted.

Jaltest OHW offers coverage for 7 different models in version 17.2. Among those systems developed, those below should be highlighted:

- Engine (Mercedes-Benz).
- Transmission (ZF, Allison).
- Central Computer.

This brand offers some advanced diagnostics functions such as actuations, checks or parameters modifications.

## 2.1.4. BOBCAT

### *Coverage and main functions*

Supplier of compact material handler and construction equipment. In version 17.2, coverage for five different models is offered. They are divided into:

- Skid steer loader
- Telescopic handlers

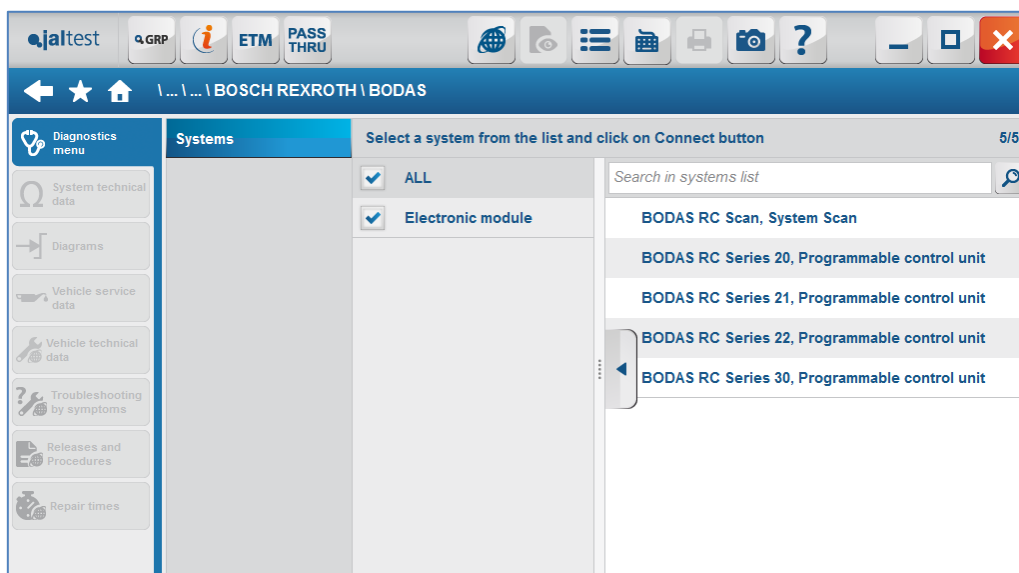
Coverage for those different Perkins engines of the brand is available for all models. There are advanced functions such as injectors encoding through \*Trim files.

## 2.1.5. BOSCH REXROTH

### *Coverage and main functions*

Control and movement technology development company, equipped with different functions and sizes machinery.

Currently, Jaltest offers coverage for cooling and hydrostatic transmissions control systems.



## 2.1.6. BUSHMASTER

### *Coverage and main functions*

Armoured vehicles manufacturer supplier for some European countries. Currently, coverage for a single model, "All Models", is offered.

Availability of coverage for:

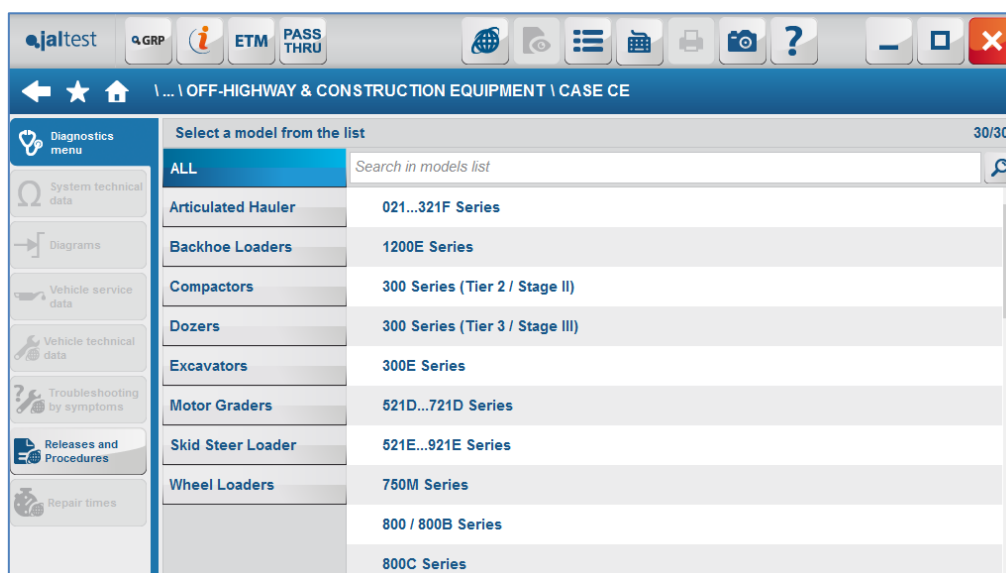
- Engine (Caterpillar 3126)
- Transmission (ZF Ecomat)

## 2.1.7. CASE CE

### *Coverage and main functions*

One of the leading construction and mining equipment manufacturing companies. Currently, this brand belongs to the Industrial CNH group.

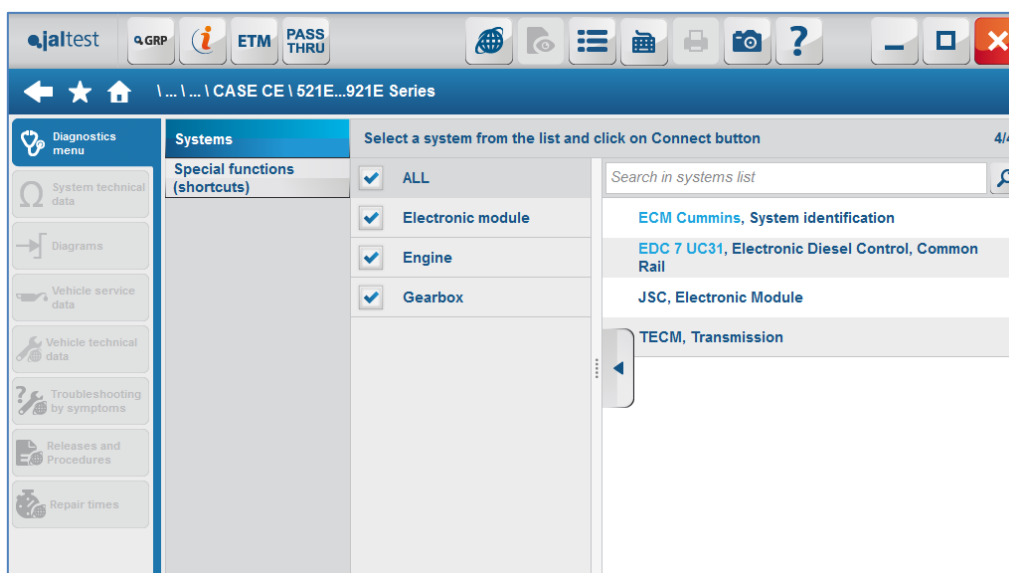
In version 17.2, coverage for 30 different models of the brand is offered, where we can find several types of machinery such as articulated haulers, backhoe loaders, compactors, dozers, excavators, motor graders, wheel loaders and skid steer loader.



Jaltest has coverage for the main systems of the machine, providing the customer with advanced functions such as actuations, calibrations or parameters modifications. Main systems:

- Engine (FPT-Iveco, Isuzu, Cummins)
- Transmission (CNH, ZF)
- Electronic modules.





## 2.1.8. CATERPILLAR

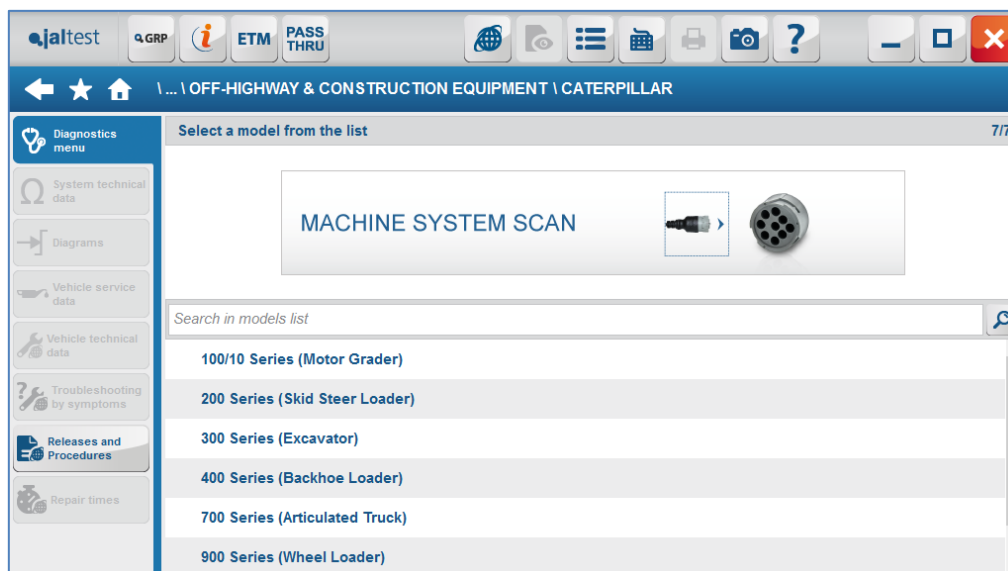
### *Coverage and main functions*

The largest manufacturer of construction machinery, mining equipment and diesel engines in the world, based in Peoria, Illinois (United States). It exports machinery to the five continents, invoicing more than 30,000M € a year.

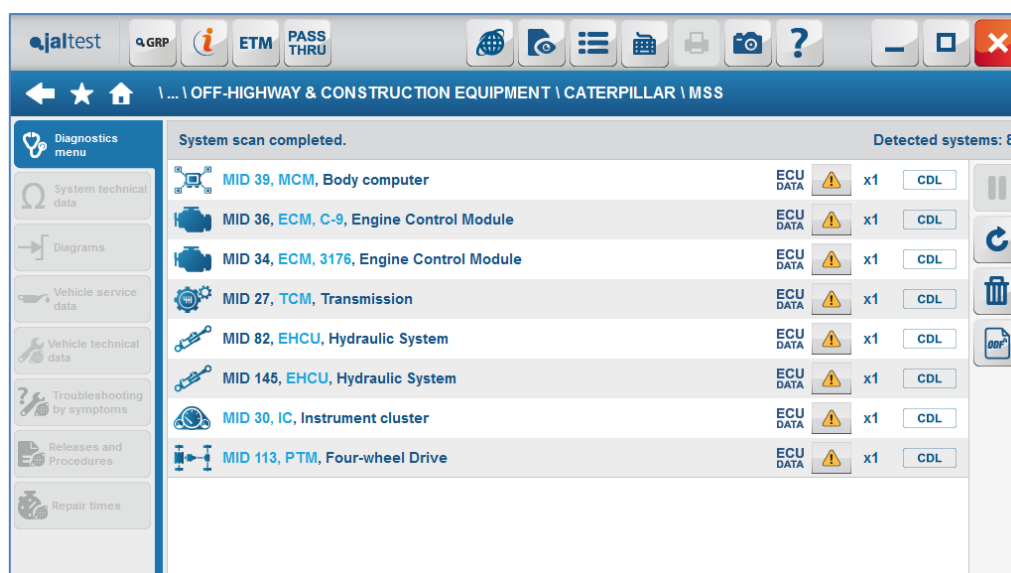
Jaltest OHW offers coverage for all its range of products, including these below, among others:

- Construction: Wheel loaders, backhoe loaders, skid steer loaders and compactors.
- Forestry: Motor graders, wheel drilling machine and forestry machinery.
- Mining: Haulers, dozers, hydraulic shovels and underground haulers.
- Oil products: Casing oscillators, excavators and power production systems.

More than 130 systems with different applications have been developed for this purpose. In addition, the customer is provided in 17.2 version with a new software function for MSS (Machine System Scan) brand.

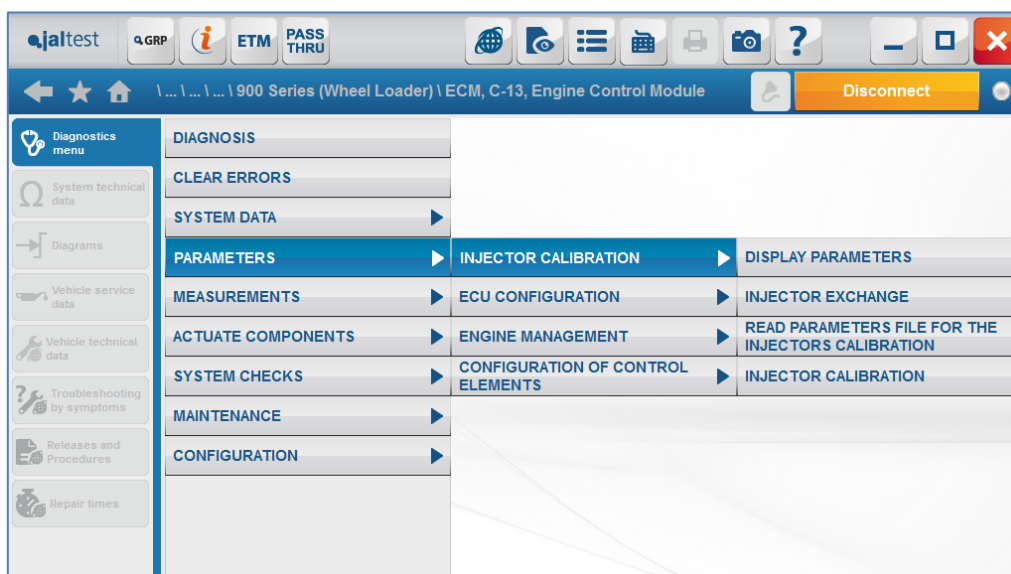


This new function allows the user to detect, connect and identify the different systems on the machine to be diagnosed, regardless of its model or application, thereby avoiding the process of identification of the machine and model.



After this process of system detection and identification, the customer is provided with a list of the systems present in the machine. In addition, with this new function, the user of JALtest can get a fast and intuitive overview of the possible faults and/or malfunctions present in the machine at a glance.

In the engine control systems, advanced diagnostics functions such as actuations, system checks, maintenances or parameters modifications are available for the user. It is worth highlighting among them **injectors encoding through \*Trim files**, which is a function available for Jaltest OHW customers and official workshops of the brand only.



Finally, wiring diagrams and system technical data for the main engine systems are available for the users. They will be automatically entitled to the user after the MSS process.

### 2.1.9. COMETTO

#### *Coverage and main functions*

Forklift manufacturer. Currently, coverage for a single model, "All Models", is offered.

Availability of coverage for:

- Engine (EMR2 - EDC). Advanced diagnostics functions such as actuations, calibrations, parameters modifications and control unit replacement are available.

### 2.1.10. CVS FERRARI

#### *Coverage and main functions*

Forklifts manufacturer. Currently, coverage for a single model, “All Models”, is offered.

Availability of coverage for:

- Engine (EMR2 - EDC). Advanced diagnostics functions such as actuations, calibrations, parameters modifications and control unit replacement are available.

### 2.1.11. FIAT - KOBELCO

#### *Coverage and main functions*

A former construction and earthmoving machinery manufacturer. Jaltest OHW currently has coverage for 9 models of the brand.

Availability of coverage for:

- Engine
- Transmission

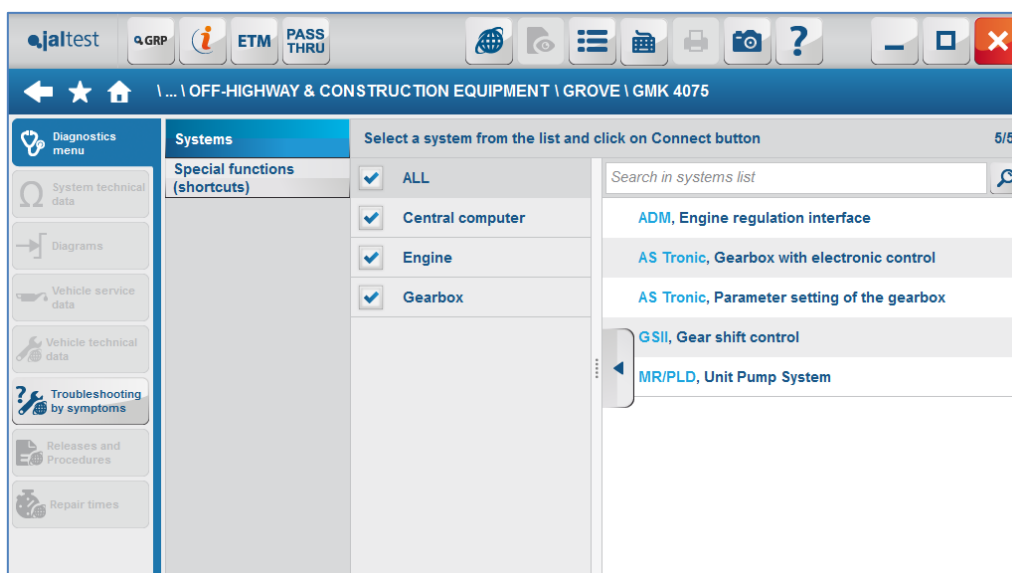
### 2.1.12. GROVE

#### *Coverage and main functions*

One of the main self-propelled cranes manufacturers in the market that belongs to the Manitowoc group.

Jaltest OHW has coverage for 24 different models of the brand. Among the systems available in Jaltest, the advanced diagnostics functions below should be highlighted:

- Engine (MB)
- Transmission (ZF, MB)
- Instrument cluster
- Central Computer
- Anti-pollution system



### 2.1.13. HAMM

#### *Coverage and main functions*

Forklifts manufacturer. Currently, coverage for a single model, “All Models”, is offered.

Availability of coverage for:

- Engine (EMR2 - EDC). Advanced diagnostics functions such as actuations, calibrations, parameters modifications and control unit replacement are available.

### 2.1.14. HITACHI

#### *Coverage and main functions*

A former construction and earthmoving machinery manufacturer. Jaltest OHW currently has coverage for two models of the brand.

Availability of coverage for:

- Engine (Cummins, Iveco – FTP, Isuzu)

### 2.1.15. HYSTER

#### *Coverage and main functions*

Forklifts manufacturer. Currently, coverage for a single model, “All Models”, is offered.

Availability of coverage for:

- Engine (EMS XPI). Advanced diagnostics functions such as actuations, calibrations, maintenance and parameters modifications.

### 2.1.16. HYUNDAI CE

#### *Coverage and main functions*

A former construction and earthmoving machinery manufacturer. Jaltest OHW currently has coverage for two models of the brand.

Availability of coverage for:

- Engine (Cummins, Perkins)

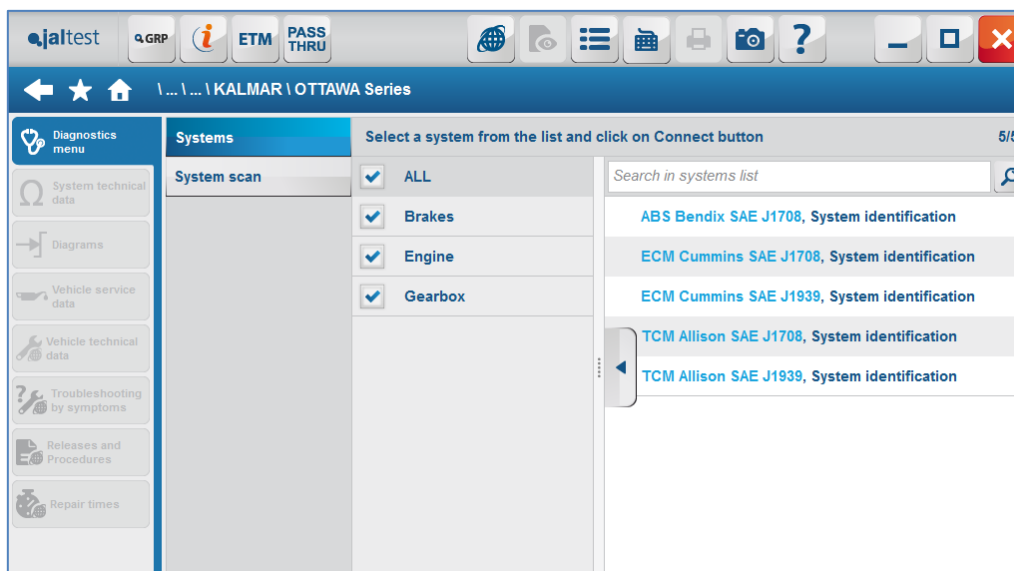
### 2.1.17. KALMAR

#### *Coverage and main functions*

One of the main manufacturers of tractor trucks in OHW applications. Specific machinery used for handling of goods containers

Jaltest OHW offers coverage for 6 different models. Among those systems developed, the systems below should be highlighted:

- Engine
- Gearbox
- Brakes



## 2.1.18. KOBELCO

### *Coverage and main functions*

Construction equipment manufacturers. Currently, this brand belongs to the Industrial CNH group.

In version 17.2, coverage for 3 models of the brand is offered. Some of them are excavators and wheel loaders.

Jaltest has coverage for the main machinery systems, providing the customer with advanced functions such as actuations, calibrations or parameters modification. Main systems:

- Engine (FPT-Iveco, Cummins)
- Anti-pollution system (DCU15)

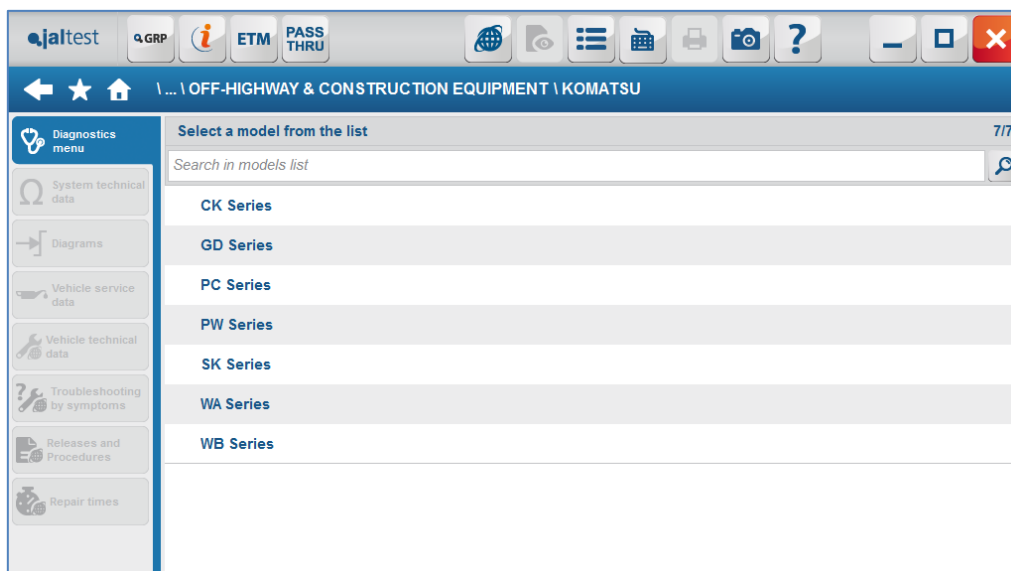
## 2.1.19. KOMATSU

### *Coverage and main functions*

Japanese manufacturer of earthmoving, mining and lifting machinery.

Jaltest offers coverage for 7 different models of self-propelled multi terrain loaders. Among those systems available in Jaltest, the following ones with advanced diagnostics functions should be highlighted:

- Engine (Cummins)



## 2.1.20. KRAMER

### *Coverage and main functions*

Forklifts manufacturer. Currently, coverage for a single model, “2500 Series”, is offered.

Availability of coverage for:

- Engine (EMR3 – EDC 16 UC40)
- Engine (EMR3 – EDC 7 UC31)

## 2.1.21. KUBOTA

### *Coverage and main functions*

Compact construction equipment manufacturer. Currently, coverage for a single model, “All Models”, is offered.

Availability of coverage for:

- Engine (E-CDIS). Advanced diagnostics functions such as actuations, calibrations and parameters modifications are available.



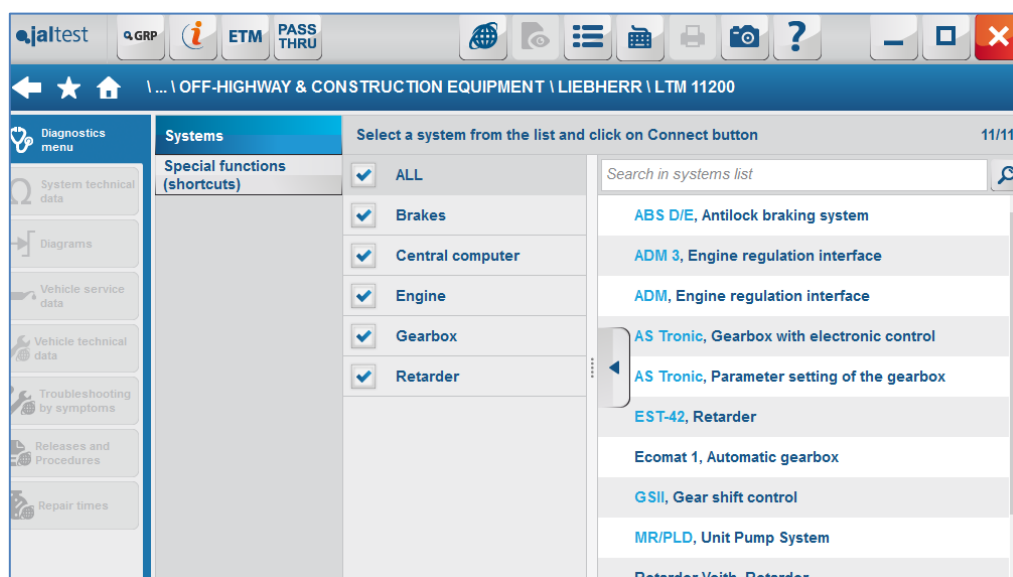
## 2.1.22. LIEBHERR

### *Coverage and main functions*

German manufacturer of self-propelled cranes, earthmoving and mining machinery.

Jaltest OHW has a coverage of 18 different models of self-propelled multi terrain loaders. Among the systems available in Jaltest, these below with advanced diagnostics functions should be highlighted:

- Engine
- Transmission
- Instrument cluster
- Central Computer
- Anti-pollution system
- Brake
- Retarder



## 2.1.23. MANITOU

### *Coverage and main functions*

Forklifts and telescopic machinery manufacturer. Jaltest currently offers coverage for 13 different models of the brand.

Availability of coverage for:

- Engine (MB, Perkins)

## 2.1.24. MAX COM

### *Coverage and main functions*

Forklifts and telescopic machinery manufacturer. Currently, coverage for a single model, “R-700 Series”, is offered.

Availability of coverage for:

- Engine (John Deere)

## 2.1.25. MERCEDES BENZ

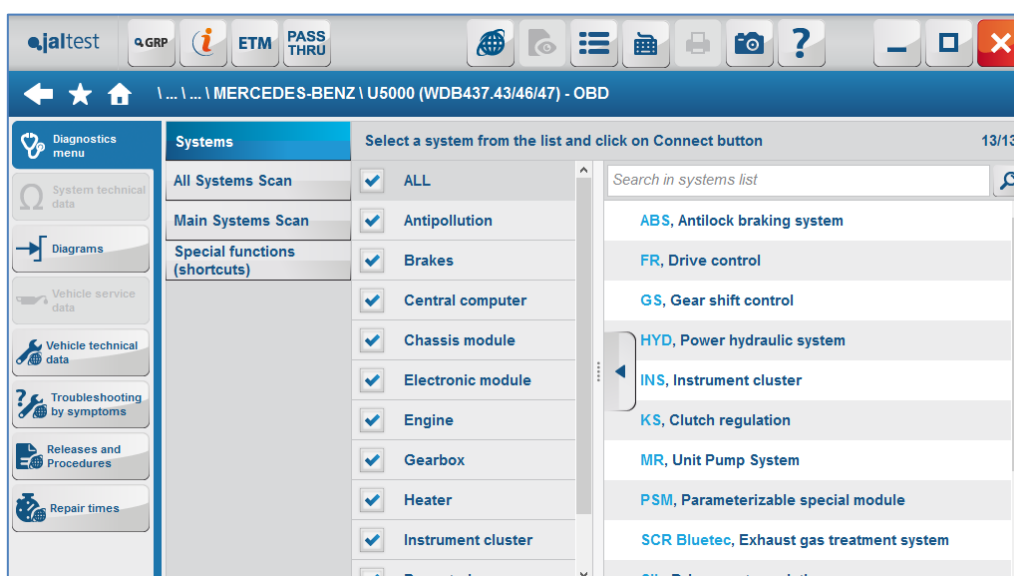
### *Coverage and main functions*

German manufacturer of light commercial vehicles, trucks and diesel engines includes the Unimog model in its range of products. This is a well-known name of a variety of 4-Wheel Drive multipurpose medium vehicles made by the manufacturer. Its name is an acronym coming from the German words **UN**iversal **MO**tor **Gerät** (motorised device of universal applications).

Jaltest OHW has a wide coverage for all the range of Unimog models, from the oldest to the latest Euro 6 models.

Currently, coverage for 19 different models of the brands is offered. Among those systems available in Jaltest, the following advanced diagnostics functions should be highlighted:

- Engine
- Transmission
- Instrument cluster
- Central Computer



## 2.1.26. NEW HOLLAND CE

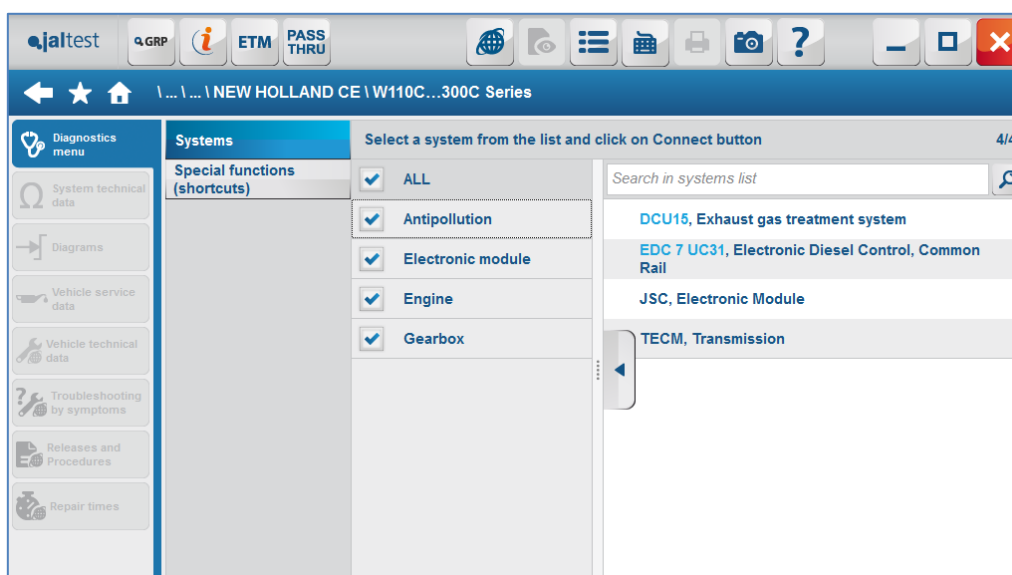
### *Coverage and main functions*

One of the leading construction and mining equipment manufacturing companies. Currently, this brand belongs to the Industrial CNH group.

In version 17.2, coverage for 14 different models of the brand is offered, where we can find several types of machinery such as articulated haulers, backhoe loaders, dozers, excavators, motor graders, wheel loaders and skid steer loader.

Jaltest has coverage for the main systems of the machine, providing the customer with advanced functions such as actuations, calibrations or parameters modifications. Main systems:

- Engine (FPT-Iveco, Isuzu, Cummins)
- Transmission (CNH, ZF)
- Electronic Module.



### 2.1.27. O&K

#### *Coverage and main functions*

Construction equipment manufacturers. Currently, this brand belongs to the Industrial CNH group.

In version 17.2, coverage for 3 models of the brand is offered, among them we can find types of machinery such as excavators and wheel loaders.

Jaltest has coverage for the main systems of the machine, providing the customer with advanced functions such as actuations, calibrations or parameters modifications. Main systems:

- Engine (FPT-Iveco)
- Transmission (ZF)

### 2.1.28. OTO

#### *Coverage and main functions*

Forklifts manufacturer. Currently, coverage for a single model, “All Models”, is offered.

Availability of coverage for:

- Engine (ECM Cummins). Identification system is available. Those functions available can vary depending on the system which is identified.

### 2.1.29. PERLINI

#### *Coverage and main functions*

Rigid hauler manufacturer. Currently, coverage for a single model, “All Models”, is offered.

Availability of coverage for:

- Transmission (TCM Allison). Identification system available. Those functions available can vary depending on the system which is identified.

### 2.1.30. PETTIBONE

#### *Coverage and main functions*

Forklifts manufacturer. Currently, coverage for a single model, “All Models”, is offered.

Availability of coverage for:

- Engine (ECM Cummins). Identification system available. Those functions available can vary depending on the system which is identified.

### 2.1.31. RANDON

#### *Coverage and main functions*

Manufacturing Company of mining hauler equipment. Currently, coverage for a single model, "RD Series" is offered.

Availability of coverage for:

- Engine (Scania)
- Transmission (Allison)

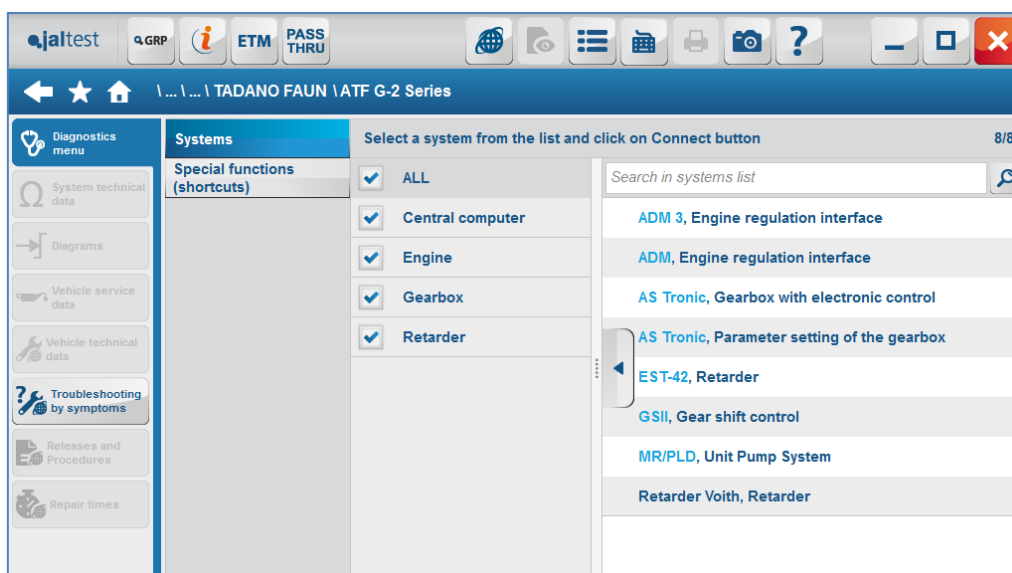
### 2.1.32. TADANO FAUN

#### *Coverage and main functions*

German engineering Company based in Franconia Lauf. It manufactures all-terrain mobile cranes only.

In version 17.2, Jaltest OHW has coverage for 6 different models of cranes. Among the systems available in Jaltest, the following advanced diagnostics functions should be highlighted:

- Engine
- Transmission
- Central Computer
- Retarder



### 2.1.33. TERBERG

#### *Coverage and main functions*

Truck tractors manufacturers for OHW applications. Specific machinery used for handling of goods containers.

Jaltest OHW offers coverage for 2 models. Among the systems developed, these below should be highlighted:

- Engine
- Gearbox

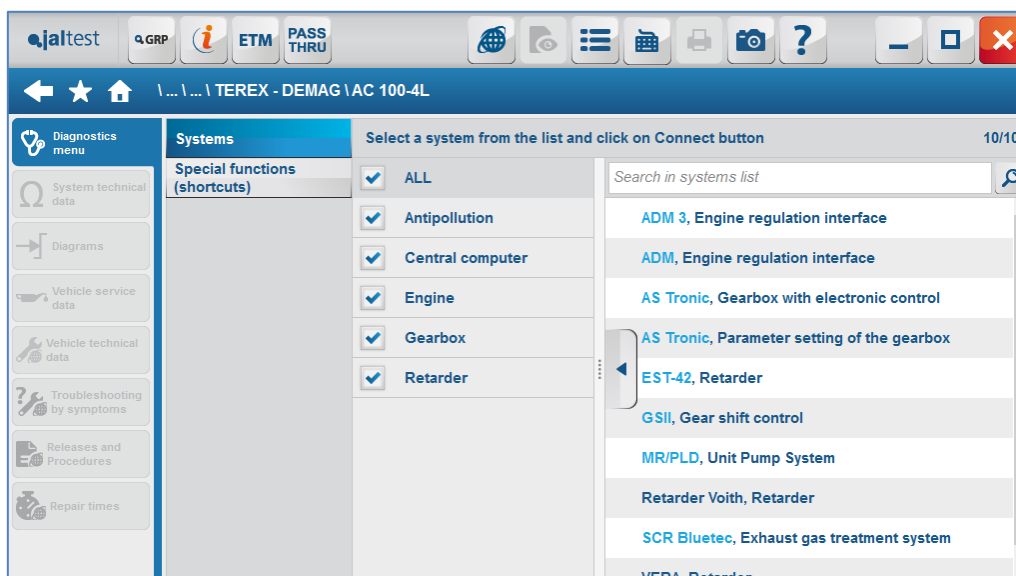
### 2.1.34. TEREX – DEMAG

#### *Coverage and main functions*

Self-propelled cranes, earthmoving and mining machinery manufacturer.

Jaltest OHW has coverage for 45 different models of self-propelled cranes. Among the systems available in Jaltest, those with advanced diagnostics functions listed below should be highlighted:

- Engine
- Transmission
- Central Computer
- Anti-pollution system
- Retarder



### 2.1.35. URO

#### *Coverage and main functions*

Manufacturer of armoured vehicles, supplier for some European countries for defence applications. Currently, coverage for four different models is offered.

Availability of coverage for:

- Engine (Steyr)
- Transmission (Allison)
- Brake

### 2.1.36. VOLVO CE

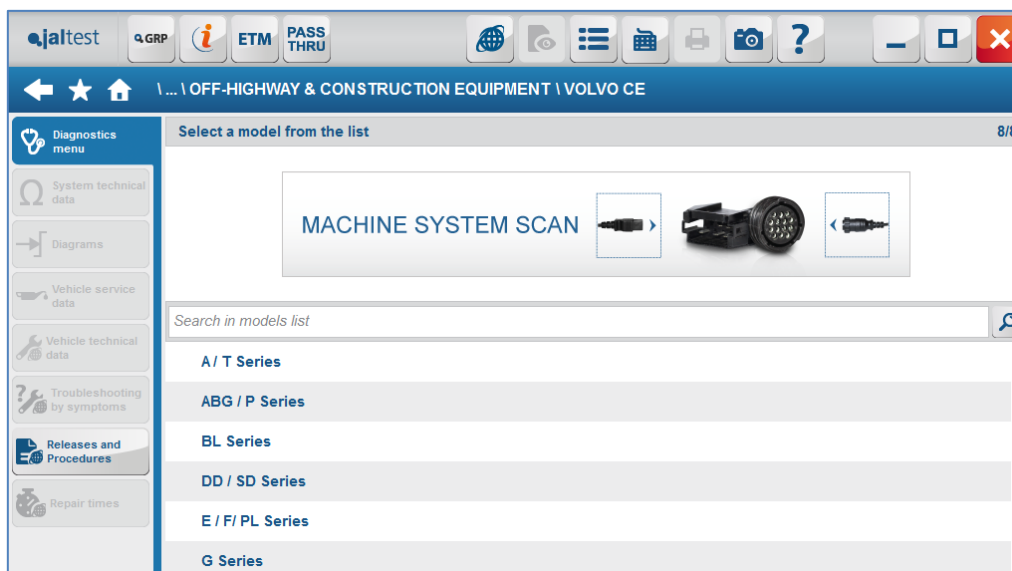
#### *Coverage and main functions*

One of the leading companies that develops, manufactures and market construction machinery, mining equipment and diesel engines. Volvo Construction Equipment - Volvo CE - (originally Munktells, Bolinder-Munktell, Volvo BM) is one of the main subsidiary and business scope of Volvo Group.

Jaltest OHW offers coverage for all its range of products, including these below, among others:

- Construction: Wheel loaders, backhoe loaders, skid steer loaders and compactors.
- Forestry: Motor graders, wheel drilling machine and forestry machinery.
- Mining: Haulers, dozers, hydraulic shovels and underground haulers.
- Oil products: Casing oscillators, excavators and power production systems.

More than 100 systems with different applications have been developed for this purpose. In addition, and similarly, the customer is provided in 17.2 version with a new software function for MSS (Machine System Scan) brand.



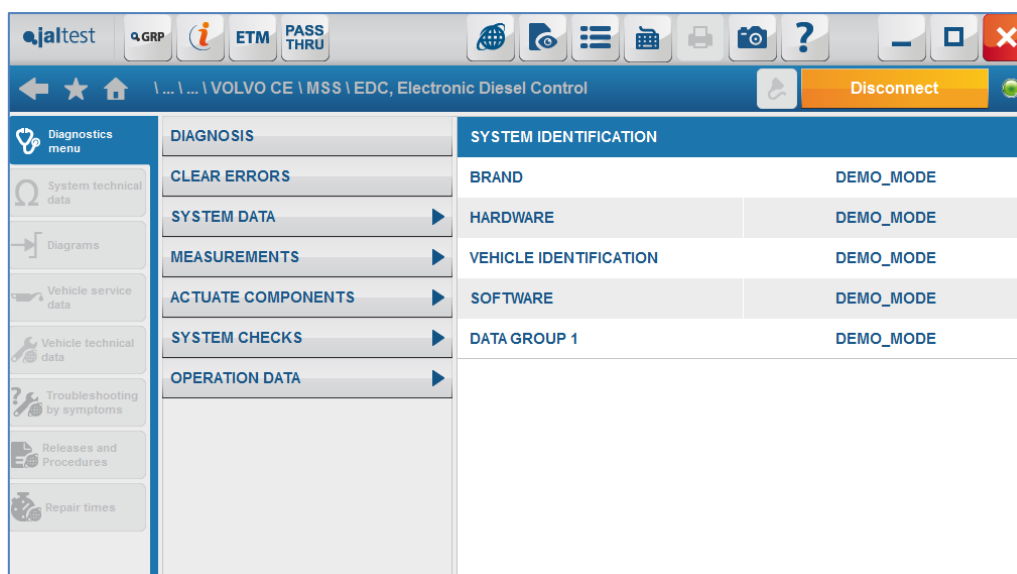
This function allows the user of Jaltest to detect, connect and identify the different systems on the machine to be diagnosed, regardless of its model or application, thereby avoiding the process of identification of the machine and model.



After this process of system detection and identification, the customer is provided with a list of the systems present in the machine. In addition, with this new function, the user of Jaltest can get a fast and intuitive overview of the possible faults and/or malfunctions present in the machine at a glance.



In the engine control systems, advanced diagnostics functions such as actuations, system checks, maintenances or operation data Reset.



### 2.1.37. XCMG

#### *Coverage and main functions*

Chinese Multinational, manufacturer of government-owned construction equipment and based in Xuzhou, Jiangsu.

Currently, coverage for a single model with the systems below is offered:

- Engine (MB)
- Central Computer

### 2.1.38. XTREME

#### *Coverage and main functions*

Forklifts and telescopic machinery manufacturer. Currently, Jaltest offers coverage for two brand models series.

Availability of coverage for:

- Engine (Perkins)

## 2.2. Stationary Engines

In this category, all those internal combustion engines which, due to their stationary features, work in the applications below are diagnosed:

- Power generation.
- Machines or mechanisms with specific applications propulsion.
- Cogeneration.

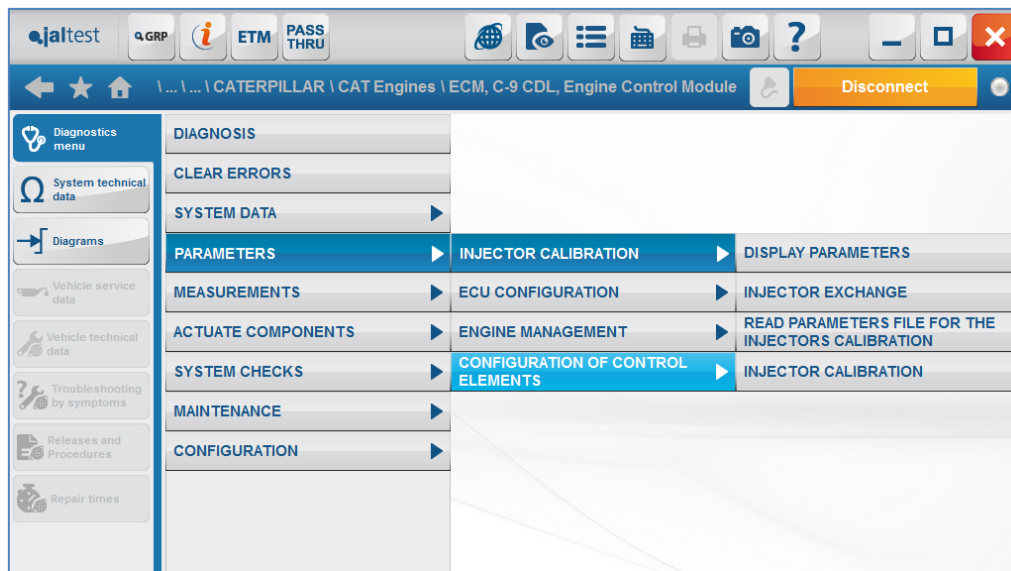
Next, each of the brands available in the application as well as a description of the coverage available in each of them are listed.



### 2.2.1. CATERPILLAR

#### *Coverage and main functions*

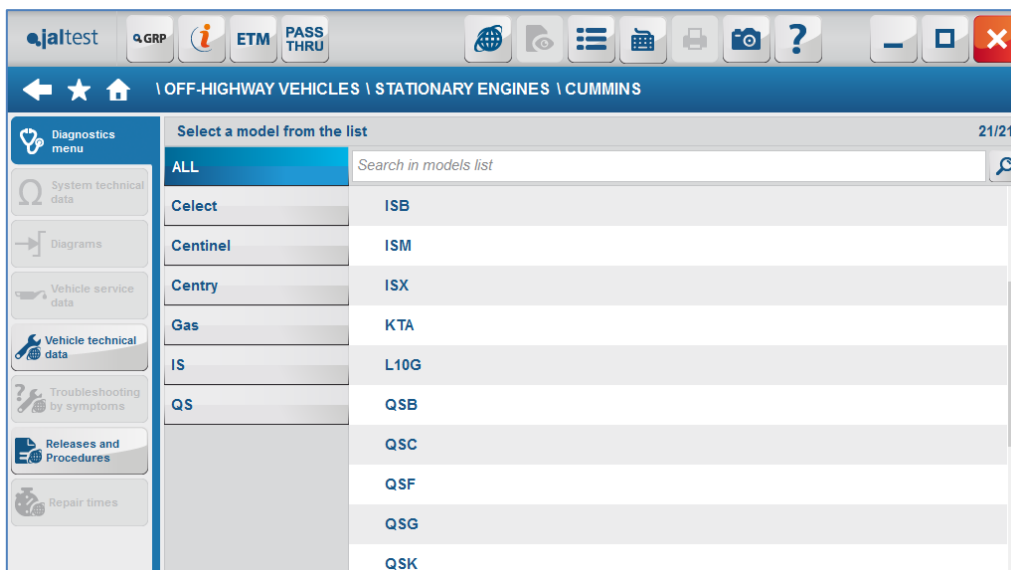
Currently, Jaltest OHW has coverage for all those models of the engines of the brand. For some models there are advanced diagnostics functions such as actuations, system checks, maintenances, parameters modifications or injectors encoding through **\*Trim** files.



## 2.2.2. CUMMINS

### *Coverage and main functions*

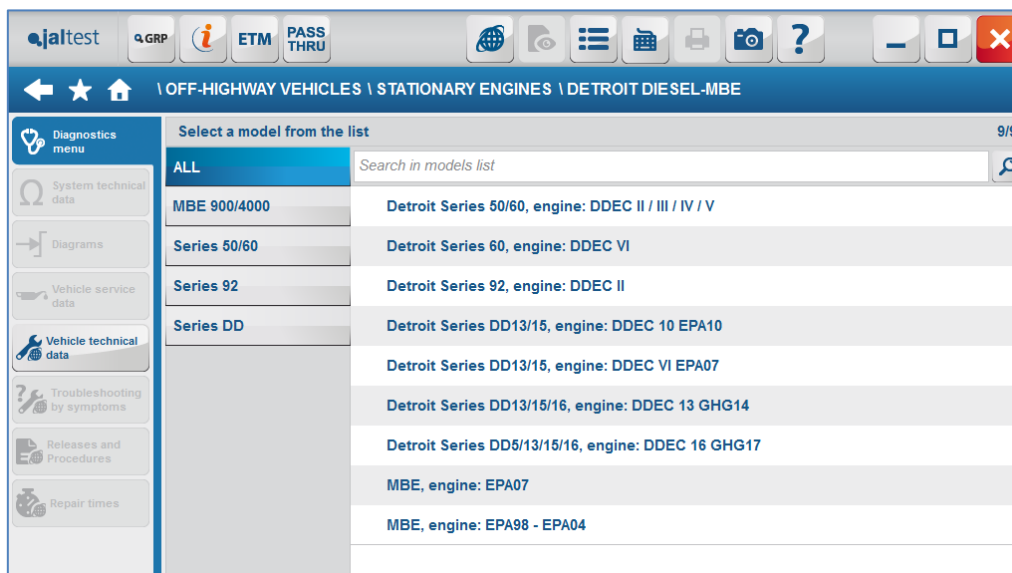
One of the leading engine manufacturers in the world. With the coverage for stationary engine, all those models designed under Off-Highway standard, belonging to Celect, Centinel, Centry, Gas, IS and QS families can be found.



### 2.2.3. DETROIT DIESEL-MBE

#### *Coverage and main functions*

Jaltest offers a wide coverage for the different engines with OHW applications of the American manufacturer, with advanced diagnostics functions such as actuations, system checks, maintenances reset or calibrations.



### 2.2.4. DEUTZ

#### *Coverage and main functions*

One of the leading manufacturers of diesel engines in the world. In version 17.2, Jaltest offers coverage for all its range of engines, from the former electronic control units (Tier I, II) to the most modern and sophisticated (Final Tier IV).

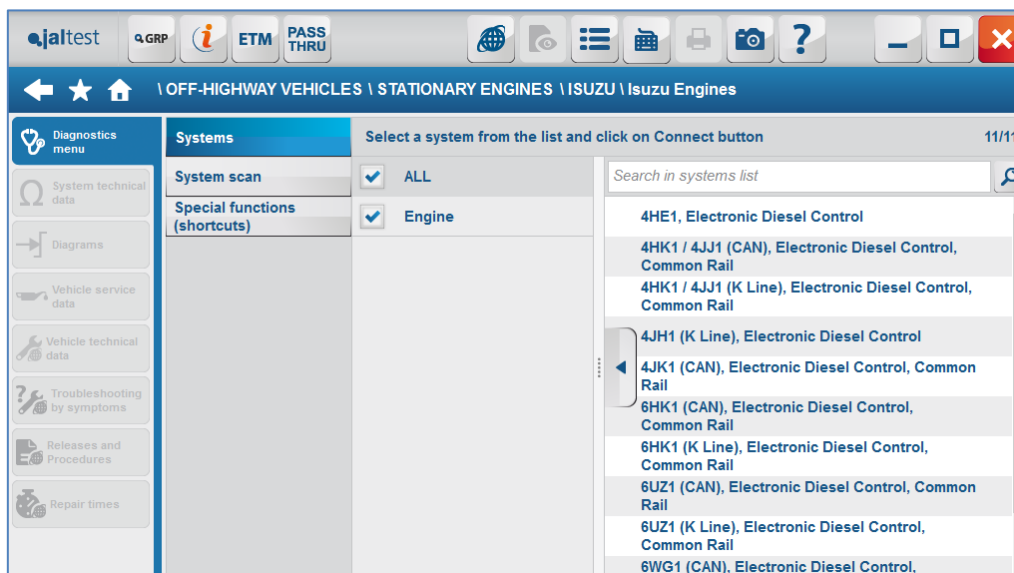
Among the different functions available, these below should be highlighted:

- Actuations
- System checks
- Calibrations
- Parameters modification.
- Parameters back up to Jaltest
- Parameters back up to the ECU

## 2.2.5. ISUZU

### *Coverage and main functions*

Japanese manufacturer of commercial vehicles with diesel engines. Jaltest OHW improves its coverage for the different models of the manufacturer, offering diagnostics functions for 11 different engine models.



## 2.2.6. IVECO-FTP

### *Coverage and main functions*

Italian Company based in Turin and subsidiary of Industrial CNH. Jaltest offers coverage for all its range of stationary engines of the Cursor, F5 and NEF families with a power of between 85 and 500 CV.

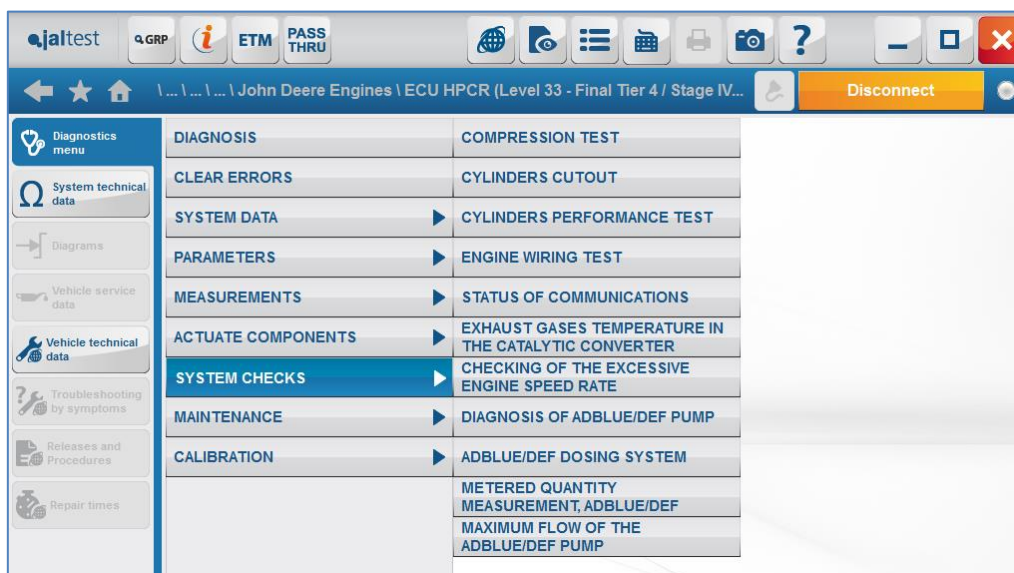
Among the advanced diagnostics functions, these below should be highlighted:

- Actuators
- System checks
- Calibrations
- Parameters modification.

## 2.2.7. JOHN DEERE

### *Coverage and main functions*

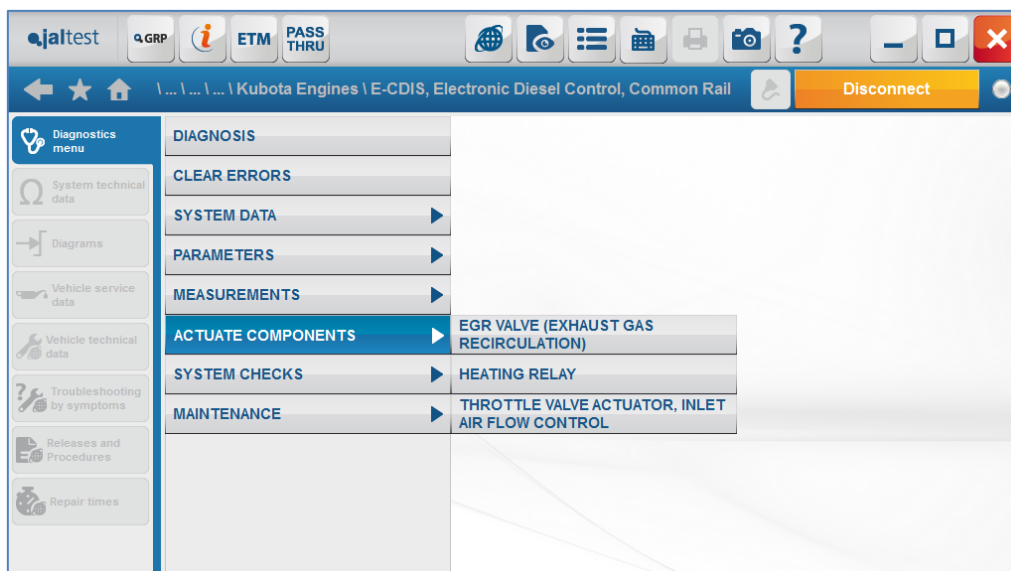
With decades of experience in manufacturing of agricultural equipment, this brand is a benchmark in the engine sector. In version 17.2, Jaltest offers a wide coverage for all engines, providing exclusive developments for each engine model. Currently, there are 16 different engine models available for Jaltest customers with all the functions included.



## 2.2.8. KUBOTA

### *Coverage and main functions*

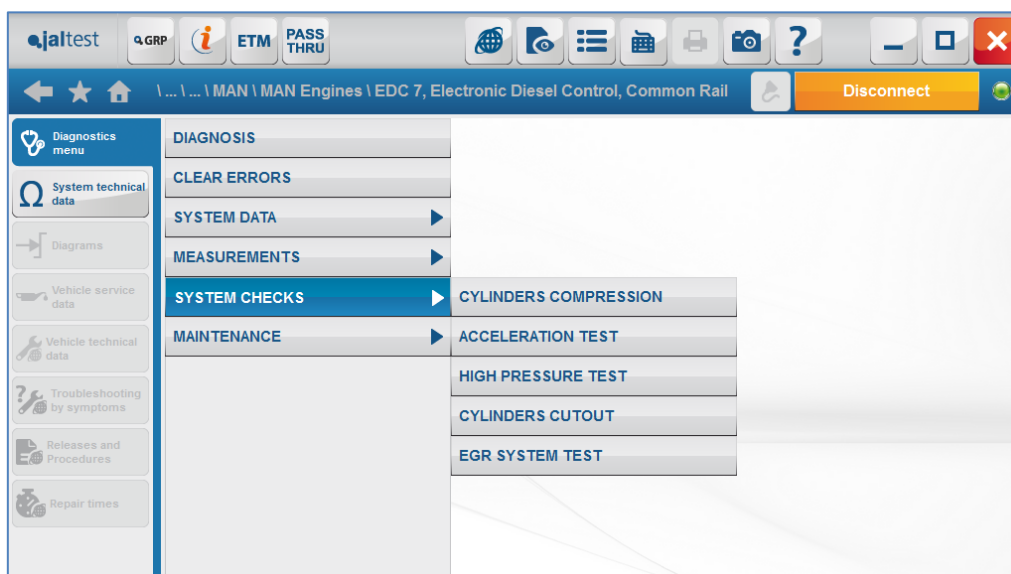
Japanese manufacturer of low and medium power with Spark-ignition and Compression ignition. Currently, Jaltest offers coverage for diesel engines of the brand belonging to Tier III y Tier IV.



## 2.2.9. MAN

### *Coverage and main functions*

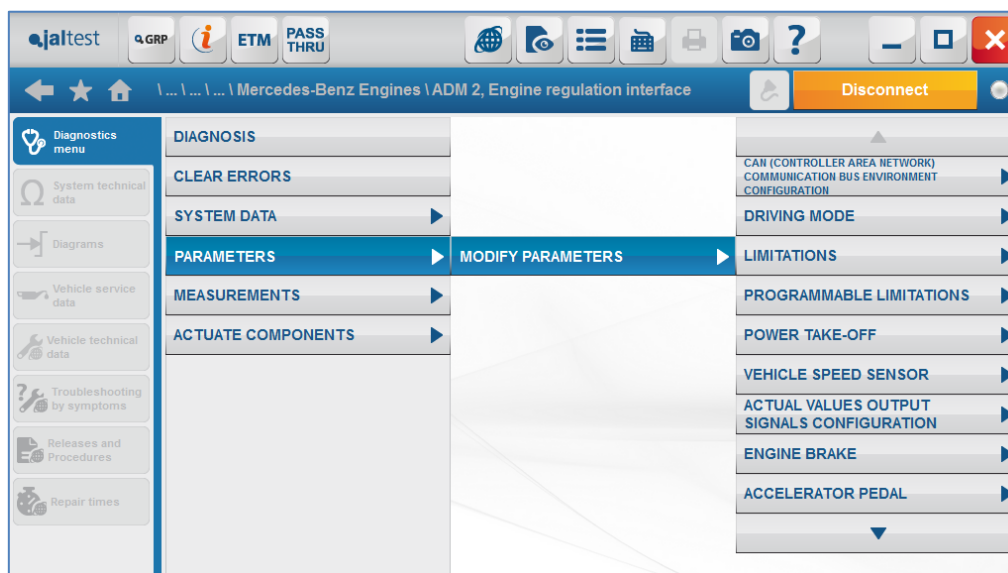
Jaltest OHW adds a wide coverage for stationary engines series of the well-known German manufacturer. The models available have been structured according to the injection system.



## 2.2.10. MERCEDES-BENZ

### *Coverage and main functions*

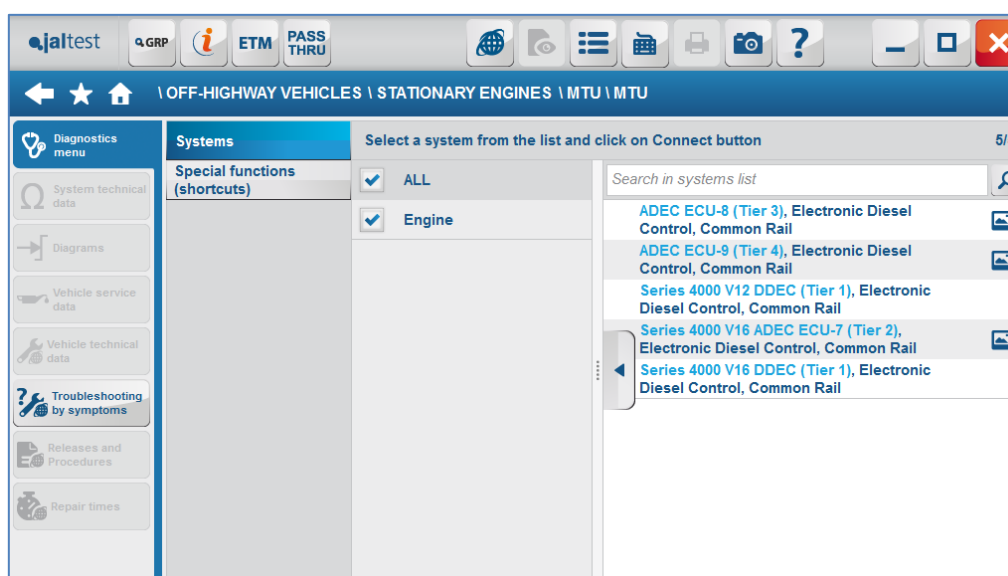
Popular German manufacturer of engines which has a wide range of engines for industrial and generation applications. Currently, users of Jaltest OHW can have access to a wide coverage in different models of the brand. In addition, advanced diagnostics functions are available on the ADM (ADM1, ADM2 and ADM3).



## 2.2.11. MTU

### *Coverage and main functions*

One of the leading brands in stationary engines. The model present in Jaltest OHW include units from 8-cylinders in V to 20-cylinders, reaching 4000 hp. All of them with ADEC control units.

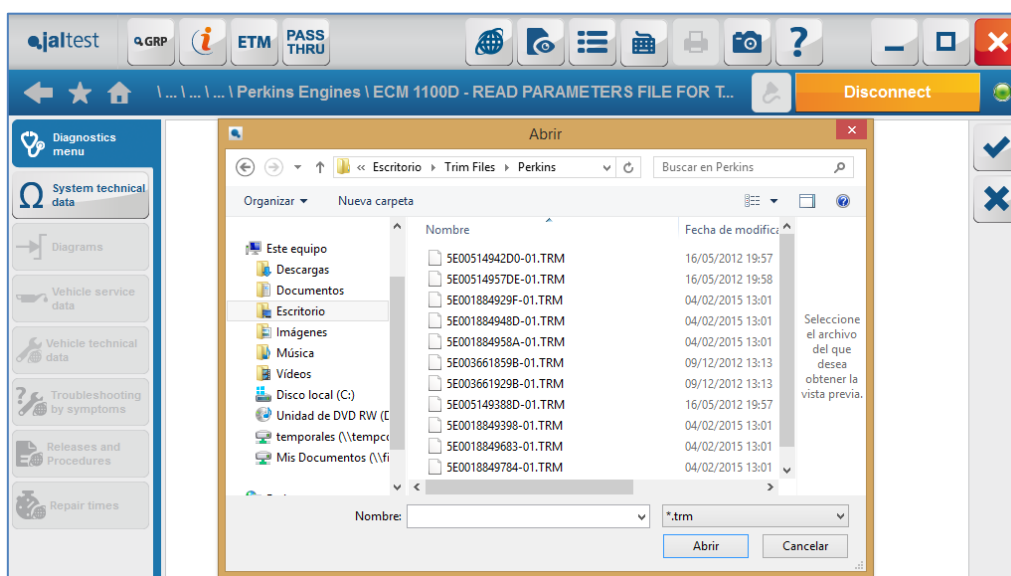




## 2.2.12. PERKINS

### *Coverage and main functions*

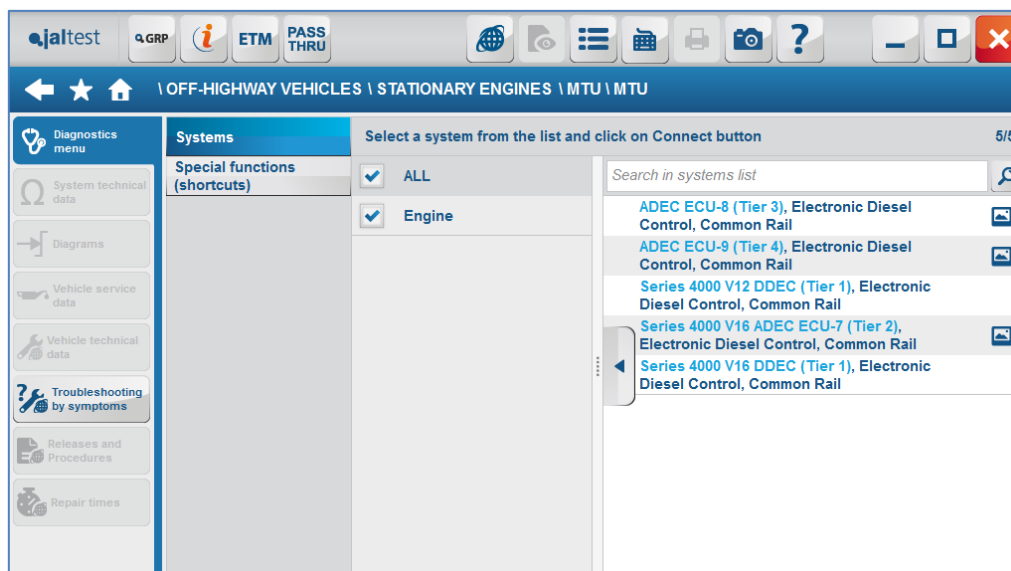
This manufacturer came originally from England until it was acquired by the firm Caterpillar at the beginning of the 1970s. Jaltest OHW offers a wide coverage for the different families of engines. Currently, Jaltest customers have exclusive functions for multibrand users such as the injectors encoding through **\*Trim** files.



## 2.2.13. SCANIA

### *Coverage and main functions*

Swedish manufacturer of engines which has a wide range of engines for industrial and generation applications. Currently, Jaltest OHW offers a wide coverage for the different models of the brand. In addition, it has diagnostics functions on COO (Coordinator)



## 2.2.14. SISU

### *Coverage and main functions*

One of the leading manufacturers of diesel engines which is property of AGCO group. In version 17.2, Jaltest offers coverage for its whole range of engines, from the first electronic control units (Tier I, II) to the most modern and sophisticated ones (Final Tier IV).

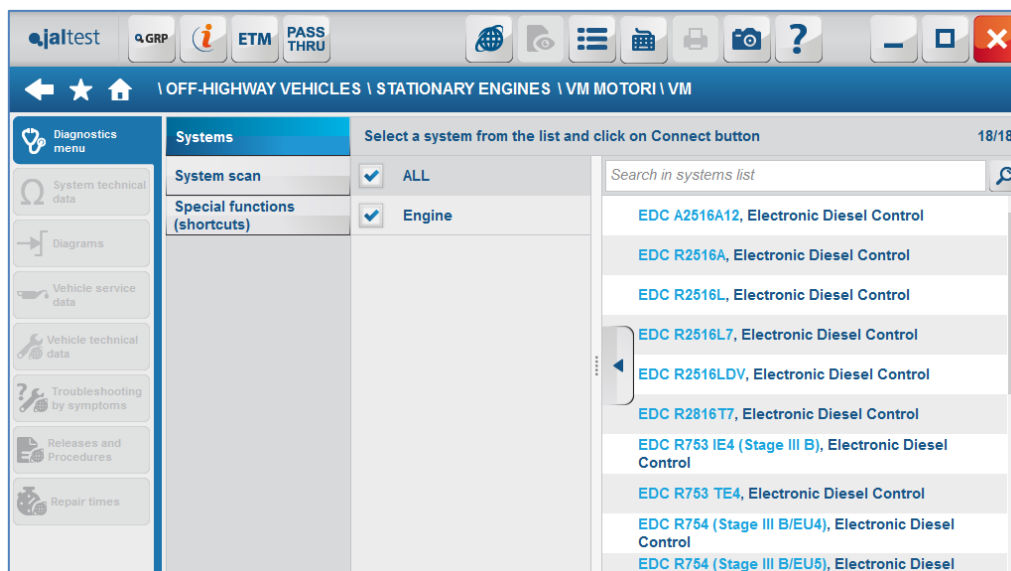
Among the different functions available, these below should be highlighted:

- Actuators
- System checks
- Calibrations
- Parameters modifications.

## 2.2.15. VM MOTORI

### *Coverage and main functions*

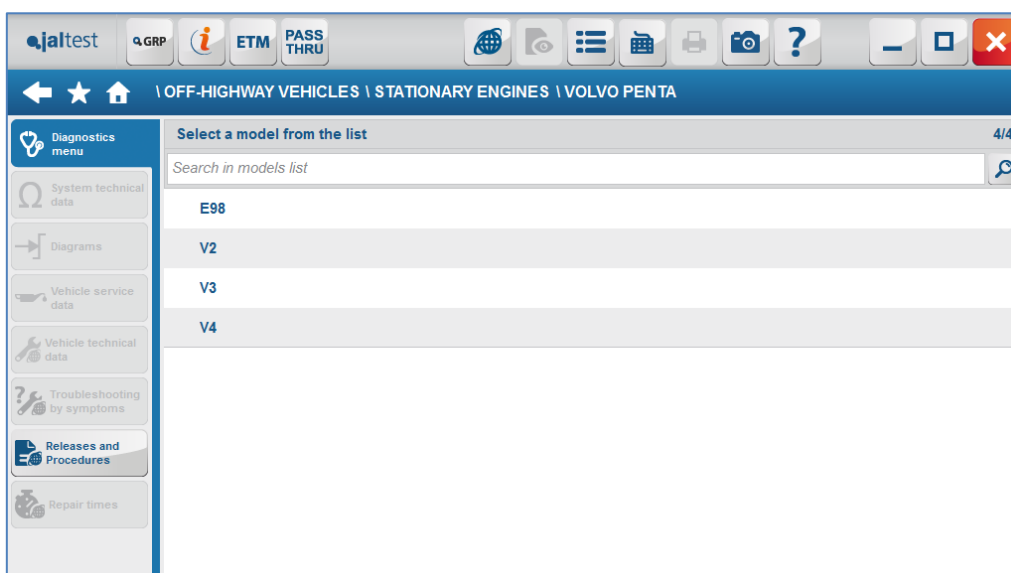
The Italian manufacturer of diesel engines is present in Jaltest OHW with a wide range of models of anti-pollution standards such as Tier II, Final Tier IV, etc. Currently, coverage of 18 different models is offered.



## 2.2.16. VOLVO PENTA

### *Coverage and main functions*

One of the leading and European brands in diesel engines which is a benchmark in the generation sector. The users of Jaltest have a wide coverage for the whole range of these engines such as Tier I, II, Final Tier IV, etc.



## 2.3. Street Sweepers

In this category, all those self-propelled machines used for road cleaning can be diagnosed. Due to this specific application, and the different places where they can work, these can be equipped with engines that comply with On-Highway standard as adapted to constraints of Off-Highway.



Next, each of the brands available in the application as well as a description of the coverage available in each of them are listed.

### 2.3.1. ASH

#### *Coverage and main functions*

Jaltest OHW currently has coverage for two models of the brand (Cleango 500 and Swingo 200+).

Availability of coverage for:

- Engine (VM)

### 2.3.2. AUSA

#### *Coverage and main functions*

Coverage available for one model of the brand only (W 350 H).

Availability of coverage for:

- Engine (VW)

### 2.3.3. BUCHER

#### *Coverage and main functions*

Jaltest OHW currently has coverage for two models of the brand (CityCat 2020 and CityCat 5000).

Availability of coverage for:

- Engine (VM)

### 2.3.4. DULEVO

#### *Coverage and main functions*

Jaltest OHW currently has coverage for two models of the brand (5000 Combi Euro 5 and 5000 Evolution).

Availability of coverage for:

- Engine (Iveco-FPT)

### 2.3.5. EUROVOIRE

#### *Coverage and main functions*

Coverage available for one model of the brand only (Cutylav 2020).

Availability of coverage for:

- Engine (VW)

### 2.3.6. MATHIEU-YNO

#### *Coverage and main functions*

Cleaning roadway machines manufacturer of SVAT group. Currently, coverage for 3 models of the brand is offered.

Availability of coverage for:

- Engine. Different engine systems of Iveco-FPT, VM and Kubota manufacturers are available.

## 2.3.7. RAVO

### *Coverage and main functions*

Cleaning roadway machines manufacturer of SVAT group. Currently, coverage for 8 models of the brand is offered.

Availability of coverage for:

- Engine. Different engine systems of Iveco and Cummins manufacturers are available.

