



DIAGNOSTICS

● jaltest AGV

CATALOGUE

CV

AGV

DHW

MHE

marine

ISOBUS
CONTROL

TOOLS

● jaltest
BYCOJALI



● jaltest AGV



JALTEST
DIAGNOSTICS



COVERAGE



SOFTWARE



HARDWARE



SERVICES



COJALI

JALTEST. INDUSTRY-LEADING DIAGNOSTICS & TECHNICAL SOLUTIONS





JALTEST DIAGNOSTICS

Jaltest AGV is a multi-brand and multi-system diagnostics tool developed to carry out the most advanced tasks of diagnostics and maintenance of agricultural equipment in a simple and intuitive way.

Jaltest is not limited to reading error codes on the systems of agricultural equipment, but it also features bi-directional control and guided troubleshooting.

FIND OUT AN EXPERIENCE BEYOND DIAGNOSIS WITH JALTEST.

JALTEST
DIAGNOSTICS

TECHNICAL
ASSISTANCE

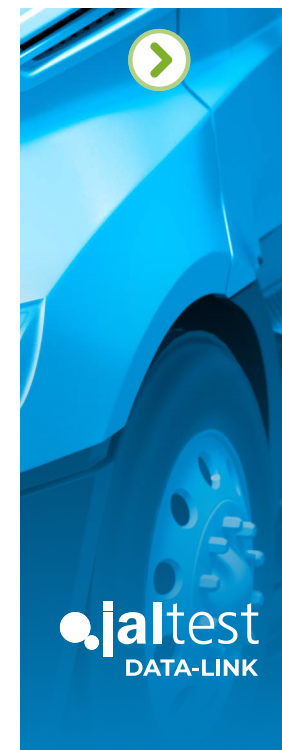
JALTEST
UNIVERSITY

SPECIALISED
CUSTOMER
SUPPORT





COVERAGE





COVERAGE



jaltest
AGV

AGRICULTURAL EQUIPMENT

It covers a wide variety of brands, models and systems, and it offers a large catalogue of cables to carry out direction connections in agricultural equipment.

Just like the rest of licences, Jaltest AGV offers the best technical information of the sector, and it will help you during the whole repair process through easy and intuitive guides.

Jaltest AGV includes advanced functions such as:

1. Calibrations
2. Parameter modification
3. System checks
4. Component actuation
5. And much more...



JALTEST AGV IS THE JALTEST DIAGNOSTICS KIT FOCUSED ON THE DIAGNOSTICS AND MAINTENANCE OF ALL TYPE OF AGRICULTURAL EQUIPMENT. THEREFORE, IT IS IDEAL FOR WORKSHOPS THAT REPAIR TRACTORS, HARVESTERS, FORAGE HARVESTERS OR GRAPE HARVESTERS, AMONG OTHERS.





COVERAGE



jaltest
cv

Diagnostics equipment aimed for workshops where repair and/or maintenance services are performed in several types of commercial vehicles, such as: Trucks, Buses, Trailers, LCVs, Pickup trucks.

Jaltest CV allows diagnosis in all commercial vehicles. Jaltest CV coverage includes truck, bus, light commercial vehicle, pickup trucks, trailer and semi-trailer.

Jaltest CV includes advanced functions such as:

1. Calibrations
2. Parameter modification
3. System checks
4. Component actuation
5. And much more...





COVERAGE



jaltest
OHW

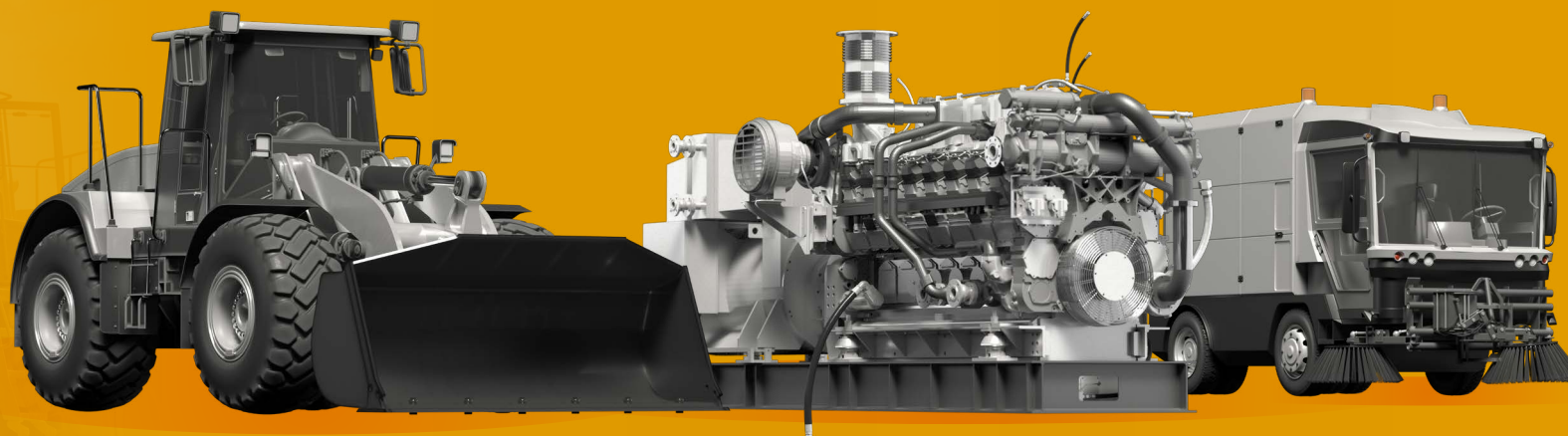
The Jaltest OHW kit has been developed to perform maintenance and diagnostic tasks in special equipment and construction machinery, such as cranes, excavators, dumpers, stationary engines, cleaning machines or road maintenance equipment, among others.

Just like the rest of the Jaltest Diagnostics modules, it offers a wide coverage of brands, models and systems, as well a large variety of cables to carry out direct connections.

Jaltest OHW includes complete technical information and troubleshooting guides, which make it the benchmark diagnostic tool of the sector.

Jaltest OHW includes advanced functions such as:

1. Calibrations
2. Parameter modification
3. System checks
4. Component actuation
5. And much more...





COVERAGE



jaltest MHE

Jaltest MHE (Material Handling Equipment) is the pioneering repair kit in the repair sector of material handling equipment due its multiple advantages and possibilities when it comes to performing diagnosis and maintenance efficiently in forklifts, telescopic handlers, lift platforms and derivatives.

It offers complete coverage, including new brands, models and systems three times a year, which guarantees a constant update of its capabilities.

Just as the rest of the kits, Jaltest MHE offers technical information, troubleshooting guides and many other useful resources for technicians during the repair of this type of equipment.

Jaltest MHE includes advanced functions such as:

1. Calibrations
2. Parameter modification
3. System checks
4. Component actuation
5. And much more...





COVERAGE



jaltest
marine

Jaltest Marine is our newest kit. The wide expertise of Jaltest Diagnostics in land vehicles has allowed us to successfully pursue the design of a complete maintenance and diagnostic tool for vessels, jet skis, outboard and inboard engines and stationary engines.

With a wide coverage of models, brands and systems, Jaltest Marine is totally orientated toward those technicians that provide nautical repair services. We have collected the best technical information for them and we have developed step-

by-step troubleshooting guides, turning Jaltest Marine into a cutting-edge tool in the sector.

Jaltest Marine includes advanced functions such as:

1. Calibrations
2. Parameter modification
3. System checks
4. Component actuation
5. And much more...





COVERAGE



jaltest DATA-LINK

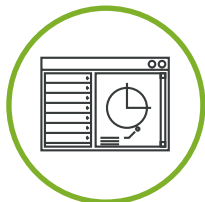
Jaltest DATA-LINK is a device that allows the user to use Jaltest hardware with the software of different manufacturers and without using the original hardware.

Jaltest DATA-LINK supports all generic communication protocols RP1210, SAE J1939, SAE J2574 and OBD.

This solution also includes a software for the diagnosis of generic errors.

Therefore, all solutions can be grouped in one single device.





SOFTWARE

JALTEST DIAGNOSTICS SOFTWARE



FIND WHAT YOU
WERE LOOKING
FOR



ADDITIONAL MODULES



DIAGNOSTICS MENU

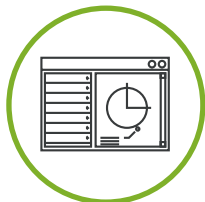


TECHNICAL INFORMATION



JALTEST IN NUMBERS





SOFTWARE

Jaltest Diagnostics software surprises for its:

1. Easy handling
2. Most advanced diagnostic functions
3. Component technical data
4. Wiring diagrams
5. Maintenance data
6. Vehicle Service Data
7. Troubleshooting Guides
8. Releases and technical procedures
9. Additional modules

**JALTEST DIAGNOSTICS
PROVIDES TECHNICIANS
WITH INCOMPARABLE
ADDITIONAL HELP.**



**GRAPHICAL USER
INTERFACE**

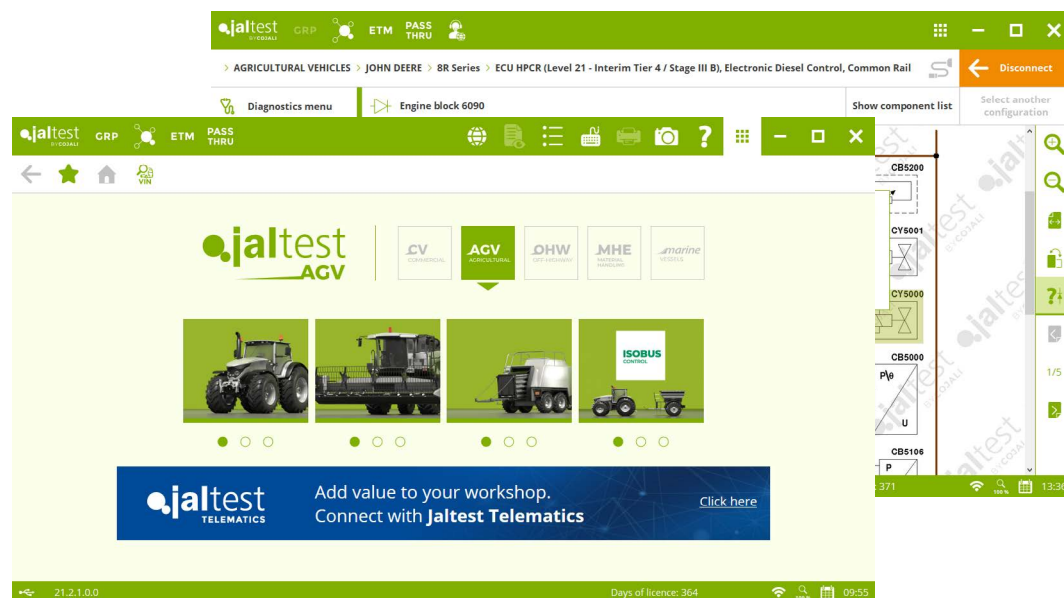




SOFTWARE



GRAPHICAL USER INTERFACE



FAST INSTALLATION
AND HANDLING

CUSTOMISABLE

EVERYTHING IN ONE
SINGLE DISPLAY

USER-FRIENDLY,
VISUAL, INTUITIVE.





SOFTWARE



FIND WHAT YOU WERE LOOKING FOR

This are some of the features that make Jaltest the Industry's Leading Diagnostics tool.



ADDITIONAL MODULES

1. GRP (Garage Resource Planning). Management of workshop and client/vehicle reports.
2. i-PARTS ASSIST. Cross-referencing platform. Installation guides.



DIAGNOSTICS MENU

3. Diagnostics Menu.



TECHNICAL INFORMATION

4. System Technical Data.
5. Wiring diagrams, and fuses and relay boxes.
6. Vehicle Service Data.
7. Vehicle Technical Data.
8. Troubleshooting Guides by symptoms.
9. Technical Releases.
10. Repair Times.
11. Troubleshooting Guides by Fault Codes.



JALTEST IN NUMBERS

The screenshot displays the Jaltest software interface. At the top, there's a navigation bar with 'jaltest BY COJALI', 'GRP', and 'PASS THRU' buttons. Below this is a breadcrumb trail: 'TRACTOR > JOHN DEERE > 7R Series > CCU, Body computer'. The left sidebar contains a 'Diagnostics menu' with numbered items 3 through 10. The main area shows 'DIAGNOSIS' with 'ERROR(S) STORED IN MEMORY: 4'. A table lists four error codes with their descriptions and status icons. A legend at the bottom identifies error types: PRESENT ERROR (red X), NON-PRESENT ERROR (grey X), and OTHER ERROR STATES (yellow !).

Error Code	Description	Status
567.05 x1	Differential Lock Solenoid valve. Front axle. Damaged circuit.	PRESENT ERROR
1638.04 x1	Hydraulic Oil Temperature Sensor. Circuit fault. The voltage in the circuit has gone below the permitted level.	PRESENT ERROR
1883.13 x1	Rear PTO (Power Take-Off). Not calibrated.	PRESENT ERROR
524235.06 x1	4-Wheel Drive Solenoid. Current too high. (Short circuit to ground.)	PRESENT ERROR



SOFTWARE



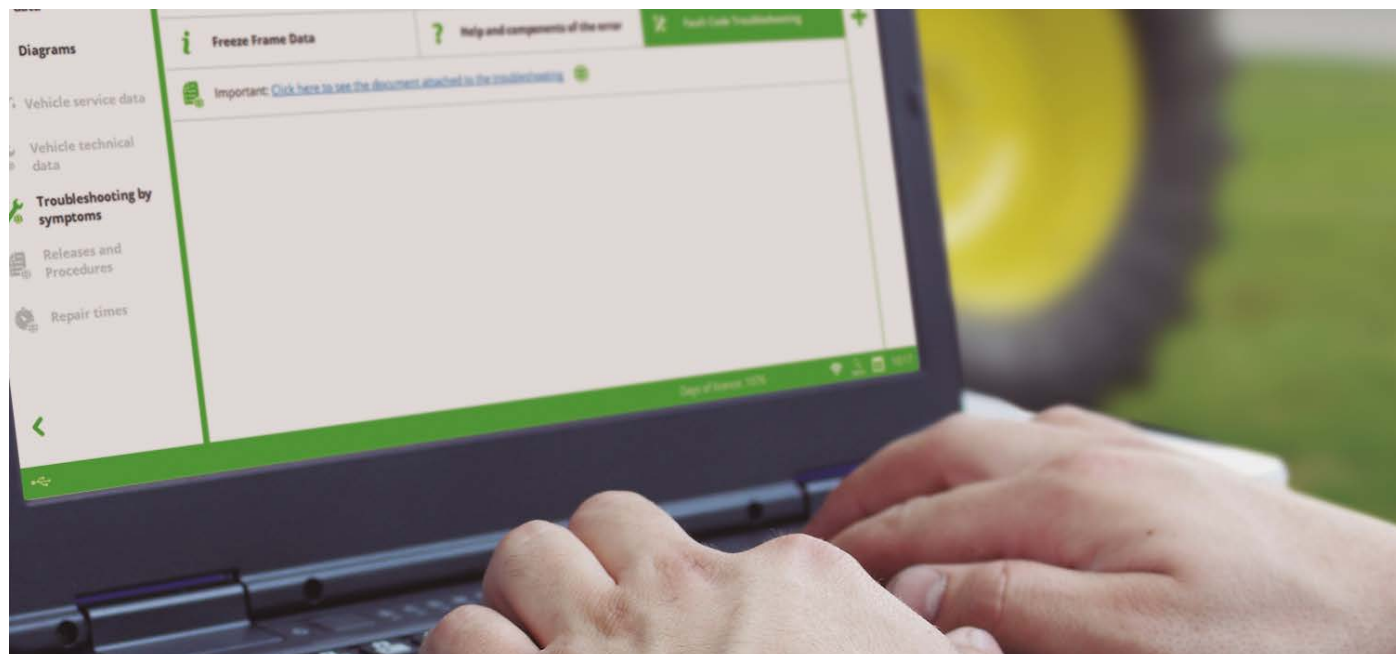
ADDITIONAL MODULES

PASS-THRU

Jaltest has the additional Pass-Thru module, which enables communication through the SAE J2534 protocol with the manufacturer's software to perform:

1. Control unit updates
2. Calibrations
3. Unit reprogramming
4. Agricultural equipment analysis

This makes it possible to reduce dependence with proprietary hardware, decreasing costs and increasing the productivity.



◀ JALTEST GRP





SOFTWARE



ADDITIONAL MODULES

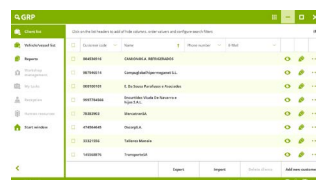
Jaltest GRP

GRP (Garage Resource Planning) is the workshop management program that allows you to organise and manage its activity. GRP is included in Jaltest.

← PASS-THRU

GRP BASIC

It allows you to store and manage clients, agricultural equipment and reports in a simple and easy way.



CLIENT LIST

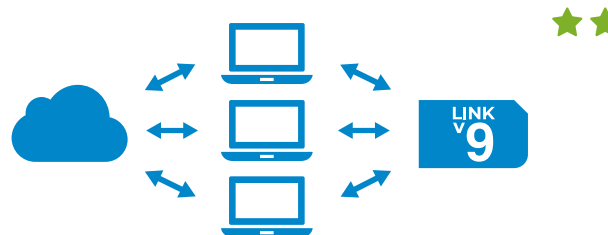


REPORTS

GRP SYNCHRO

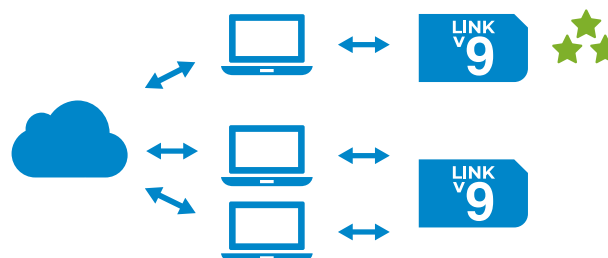
Upgrade by storing all your clients, agricultural equipment and reports in the cloud.

Synchronise automatically all data stored in all your devices.



GRP ENTERPRISE

Manage one or more workshops completely. Synchronise all stored data, even if it is located in different workshops!
Access all Jaltest GRP functionalities.



GRP NETWORK

A workshop network is a big deal, but Jaltest GRP can also help with its daily management.



JALTEST GRP FUNCTIONALITIES

CLIENT LIST MANAGEMENT

VEHICLE LIST MANAGEMENT

REPORT MANAGEMENT

- Diagnostics reports
- Maintenance reports

WORKSHOP MANAGEMENT

- Work orders
- Tasks
- Workshop time reports

WORKSHOP RECEPTION MANAGEMENT

- Reception forms
- Work orders management

HUMAN RESOURCES MANAGEMENT



SOFTWARE



DIAGNOSTICS MENU

1. SYSTEM DISPLAY

Real-time live data display of agricultural equipment diagrams, enabling fast assessment of the system performance.

2. DATA RECORDER

This function allows the user to make tests while the agricultural equipment is moving and, at the same time, to record measurements and diagnostics errors. This way, it is possible to know the exact moment at which an error occurred.

3. VIRTUAL INSTRUMENTS / GRAPHS

Visual aid for the technician to check values and understand the current status of any system available in the agricultural equipment.



4. SYSTEM SCAN

This function allows the user to auto-detect the available systems in the selected model. During the Auto-detection, error reading of every available system takes place including their identification data. Later, every error found can be cleaned.

5. VEHICLE VIN DETECTION

It allows the detection of the VIN or chassis number of the agricultural equipment with just one click.

6. SHORTCUT TO SPECIAL FUNCTIONS

Optimize repair times at the shop with direct access to relevant repair processes.

AND MUCH MORE!



SOFTWARE



TECHNICAL INFO

The technical information of Jaltest includes:

- 1. System Technical Data:** Specific OEM standards for the most common adjustments of agricultural equipment.
- 2. Wiring, system and fuse diagrams:** More than 3,600 simple, interactive and easy-to-navigate diagrams for the different system configurations.
- 3. Vehicle Technical Information:** UA complete data base with all the information needed to perform the proper maintenance of the selected agricultural equipment.
- 4. Troubleshooting Guides by symptoms:** Step-by-step guides that allow to perform diagnostics by symptoms on agricultural equipment.
- 5. Technical Releases:** Bulletin on technical service, launches and procedures with updated information, published by the OEMs, about any modification of the service and procedures, reviewed parts, etc.
- 6. Repair Times:** In order to improve the time management and productivity in the workshop, Jaltest Info includes a function to estimate times.
- 7. Troubleshooting Guides by Fault Codes:** Intuitive and easy-to-follow troubleshooting guides, for both mechanical and electronical problems, linking directly to the actions to be carried out.



JALTEST HAS THE BENCHMARK
DATA BASE OF TECHNICAL
INFORMATION IN THE MARKET.





SOFTWARE



JALTEST IN
NUMBERS

BRANDS

112

MODELS

1916

SYSTEMS

9902

TECHNICAL INFO

6138

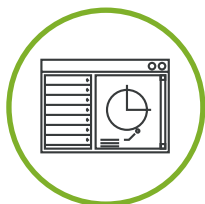
DIAGRAMS

3958



THREE ANNUAL SOFTWARE UPDATES





HARDWARE



**JALTEST
HARDWARE KIT**



LINK V9



**SUPPLEMENTS AND
ACCESSORIES**





HARDWARE



LINK V9



LIGHT, FAST,
EXCEPTIONAL.

MAXIMUM CONNECTION SPEED

It performs diagnostics in every control unit of the agricultural equipment at a hitherto previously unknown speed.

PROTECTED USB AND SUBD26 CONNECTORS THANK TO THE POKA YOKE DESIGN

HIGH-PERFORMANCE, RUGGED AND RELIABLE ELECTRONICS

Greater connectivity, new supported communication protocols and extended multiplexor.

IMPACT ABSORPTION

Design with a rugged covering that cushions small bumps, protects against scratches and enables the seal closure of the device, preventing the inlet of dirt and water (IP40).

COMPACT AND LIGHT





HARDWARE



JALTEST DIAGNOSTICS HARDWARE KIT

All Jaltest products have been designed to meet the demands and needs of the workshop mechanics and the most demanding road assistance needs. They are designed and built to face any extreme work or weather conditions.

Jaltest Diagnostics Hardware Kit can be configured according to the workshop needs. There is a wide variety of connectors depending on the types of brands and models of agricultural equipment.



JALTEST DIAGNOSTICS HARDWARE KIT
ALLOWS CONNECTION TO ALL THE TYPES
OF AGRICULTURAL EQUIPMENT AVAILABLE
WITHIN JALTEST COVERAGE.





HARDWARE



SUPPLEMENTS AND ACCESSORIES

JALTEST OFFERS A WIDE VARIETY OF ACCESSORIES AND SUPPLEMENTS THAT LEADS TO UNPARALLELED DIAGNOSTICS OF AGRICULTURAL EQUIPMENT.

JALTEST RUGGED PC

Jaltest Rugged PC is optimised for the use of Jaltest in the most demanding conditions.

- Windows 10 Pro
- Rugged and exclusive design
- Liquid-resistant keyboard/touchpad.
- Keyboard available in several languages
- Replaceable Battery



JALTEST RUGGED PAD

Jaltest Rugged Pad is a high-performance tablet that enables a more versatile use of Jaltest.

- Windows 10 Pro
- 10" Screen
- Replaceable Battery
- Digitizer pen
- Rugged and exclusive design



WORKSTATION

The Jaltest workstation trolley is the best way of transporting Jaltest. It is specially designed to perform diagnostics in all agricultural equipment with maximum comfort.





SERVICES

JALTEST UNIVERSITY

Our Jaltest University division gathers the entire Jaltest training offer, from courses traditionally taught on-site to online courses or webinars. This way, we have adapted to the new needs for universal and quality training at the disposal of any professional in the sector.

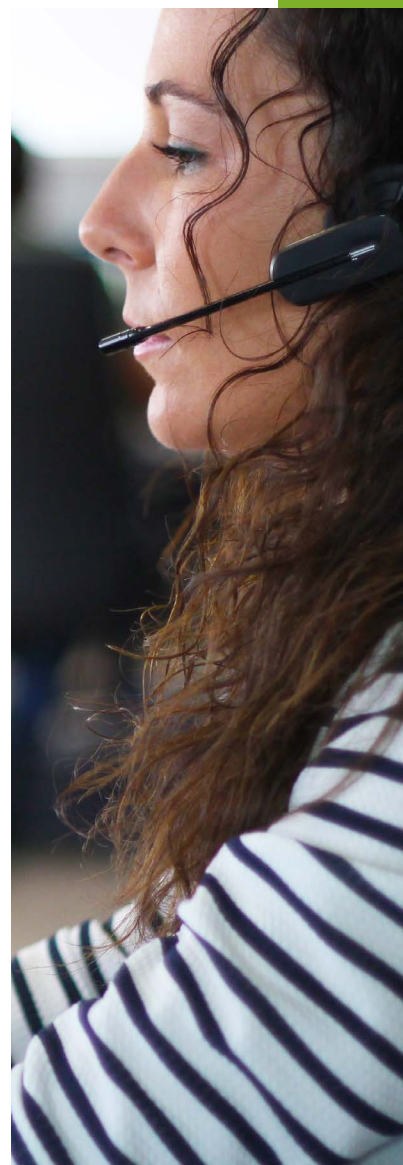


Jaltest University is aimed at:

- Workshops
- Manufacturers
- Distributors
- Students
- Other professionals of the sector

Jaltest University includes the following topics, among others:

- Diagnosis
- Engine management
- Anti-pollution system
- Pneumatics
- Electricity and communication protocols



TECHNICAL ASSISTANCE

1731

Connected workshops (SP & PT)

43940

Solved incidences

AVAILABLE LANGUAGES:

- | | |
|-----------|--------------|
| - SPANISH | - RUSSIAN |
| - ENGLISH | - PORTUGUESE |
| - ITALIAN | - TURKISH |
| - GERMAN | - ROMANIAN |
| - FRENCH | - HINDI |

CUSTOMER SERVICE

A human team will be at your service to offer all the information about Jaltest you may need.

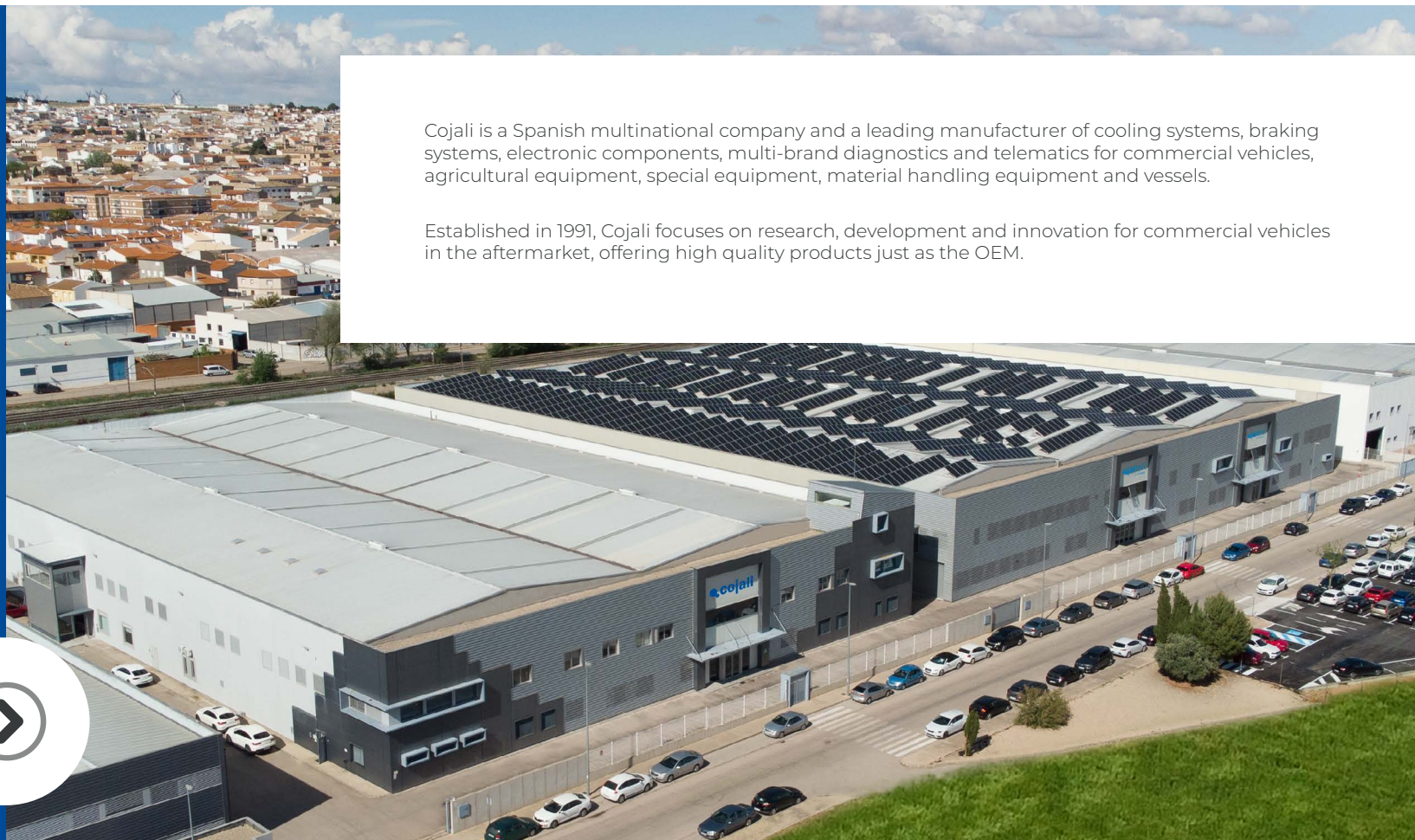
1. Software Update and Innovations.
2. Update release calendar information.
3. Device license management.
4. New products, hardware and software.
5. Special offers and promotions.
6. Invoices and purchase orders.
7. Shipping management.

« **cojali**

700
WORKERS

+115
COUNTRIES

COJALI.
INTERNATIONAL
PRESENCE



Cojali is a Spanish multinational company and a leading manufacturer of cooling systems, braking systems, electronic components, multi-brand diagnostics and telematics for commercial vehicles, agricultural equipment, special equipment, material handling equipment and vessels.

Established in 1991, Cojali focuses on research, development and innovation for commercial vehicles in the aftermarket, offering high quality products just as the OEM.

HEAD OFFICE



SPAIN

BRANCHES



FRANCE



ITALY



USA

SALES OFFICES



GERMANY



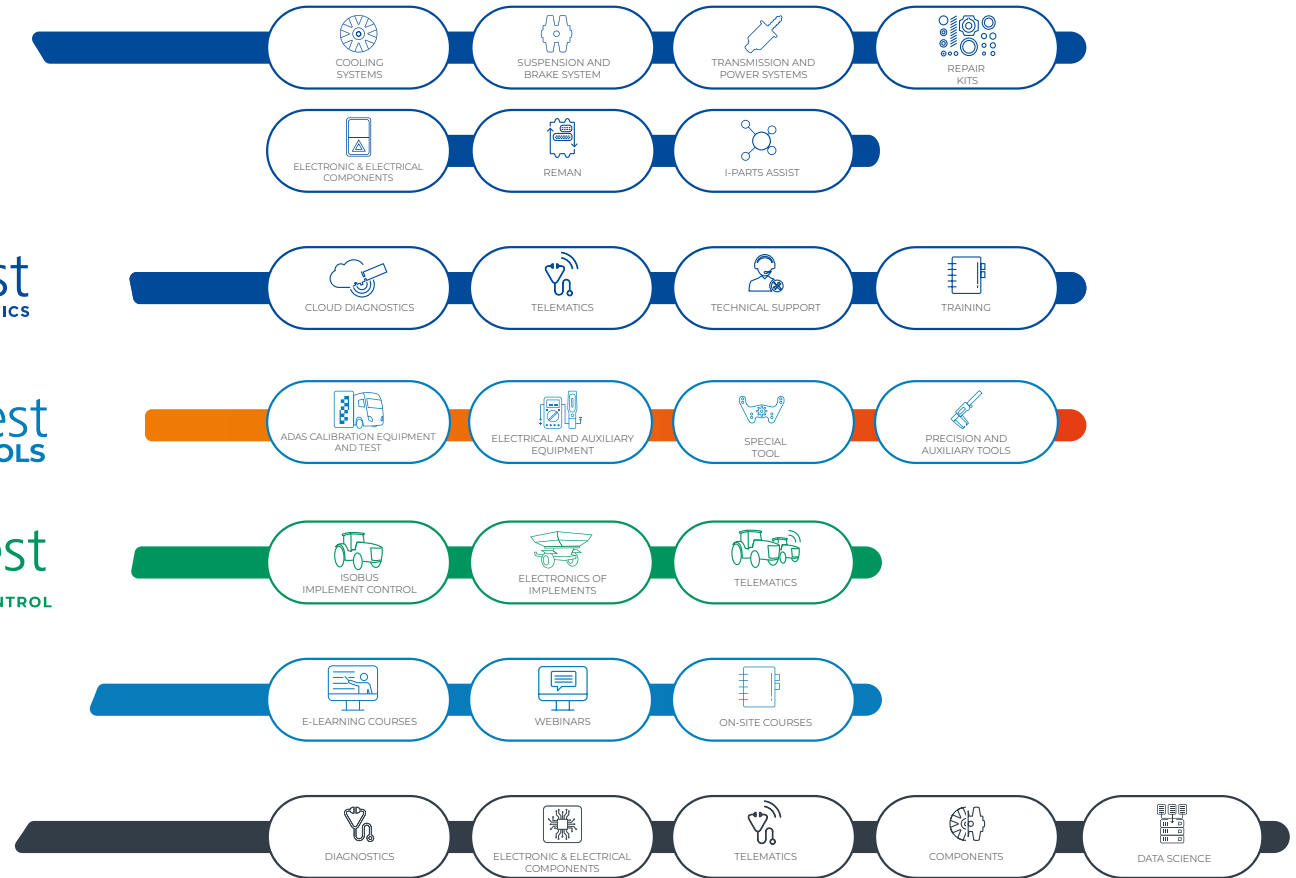
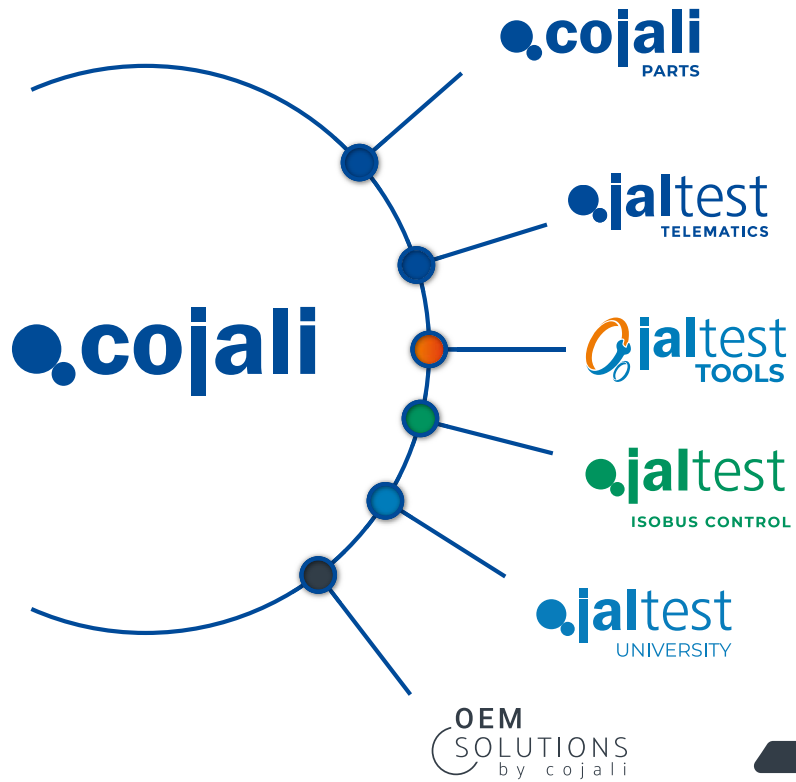
MEXICO



TURKEY



RUSSIA





cojali.com

jaltest.com



2021 V1 EN

HEAD OFFICE

NATIONAL

Tel.: +34 926 589 038



atencionalcliente@cojali.com



INTERNATIONAL

Tel.: +34 926 270 621



customerservice@jaltest.com



[CLICK HERE TO CONTACT US](#)