



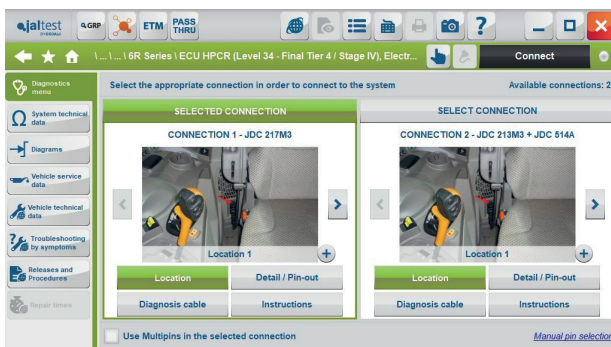
## INNOVATIONS 19.3



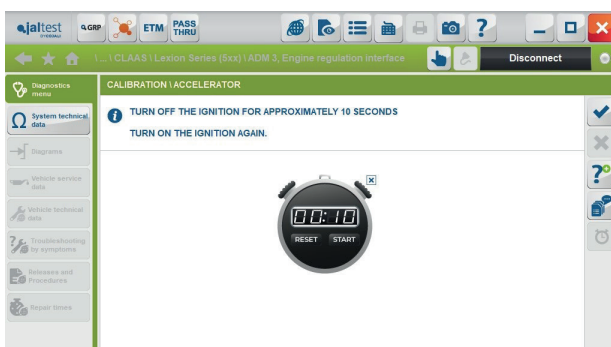
# SOFTWARE INNOVATIONS

## Manual selection of connection pins

This *Expert mode* function allows the user to configure the connection to a system by manually selecting the communication pins on the OBD or Deutsch 9-pin cable. In this way, this function offers the user an alternative to the connection offered by the software in the most common communication protocols. Only available for V8 and higher devices.



## Countdown timer



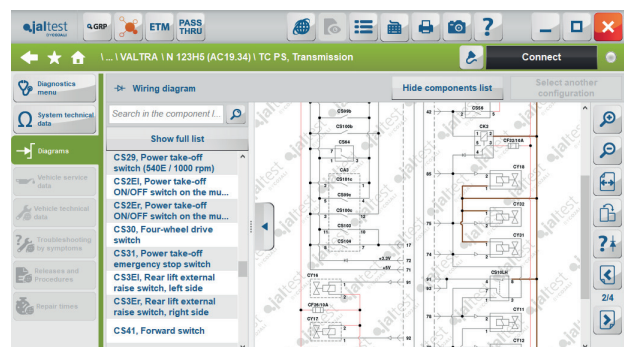
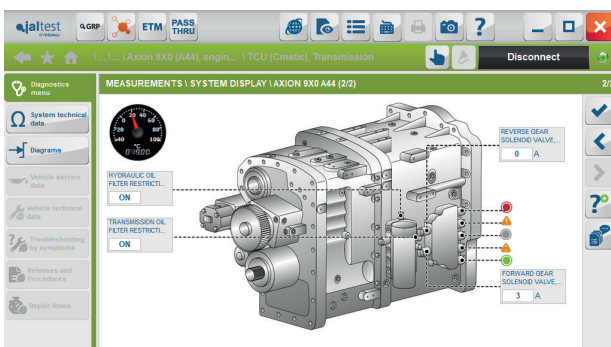
During the execution of some functionalities, it is necessary to wait a certain period of time until performing any operation. From this version, in this type of steps, Jaltest offers a countdown timer with the set time.

# NEW DIAGNOSIS AND SYSTEM FUNCTIONALITIES

Take into account that this document is only a summary of the most important information of this new version. For more information, please visit Jaltest Report.

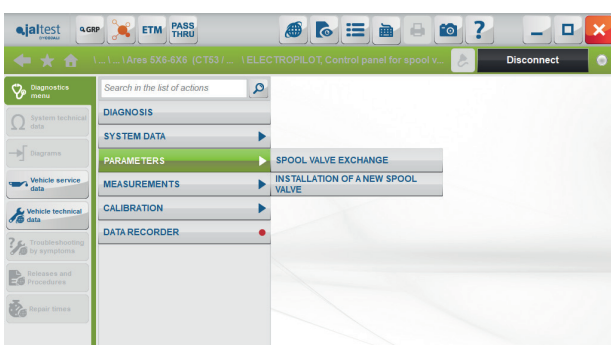
This version, **5 new brands** in agricultural vehicles have been included: KRAMER, LS, MAHINDRA, TERRION and ZETOR.

This version highlights the extension of technical information offered to the user in all brands of agricultural vehicle.



## VEHICLE BRANDS

### CLAAS

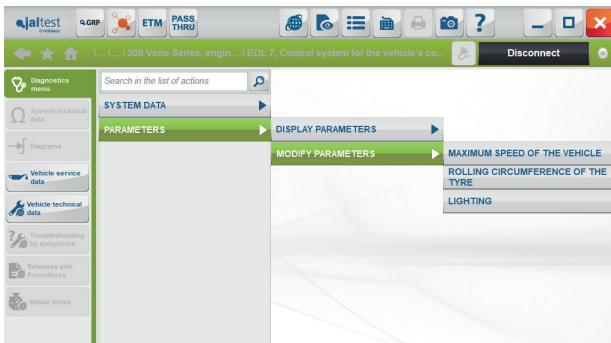


➕ New first-generation Lexion Tier 3 and earlier harvester systems.

**Electropilot** spool valves control system, new parameters.

# FENDT

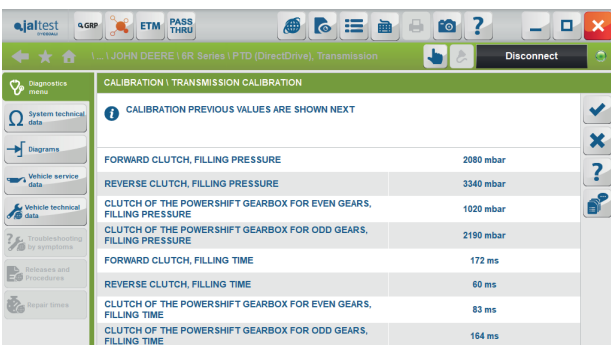
Improvement in the identification of the **Sauer Danfoss** spool valves control system.



+ New **Final Tier 4/Stage IV Fendt 700 Vario Series (Power)** model.

+ New **EOL7** configuration system of the vehicle parameters in **Final Tier 4/Stage IV Fendt 300 and 700 Vario Series (Power)** models.

# JOHN DEERE



PTD (**DirectDrive**) transmission, parameters and calibration.

HCC hydraulic lift in 7R Series and 8R Series models, calibration.

# LAVERDA

+ New combine harvester models.

# McCORMICK

+ New **X7 Series** tractor models.

# NEW HOLLAND

+ New **TS6 Series** tractor models.

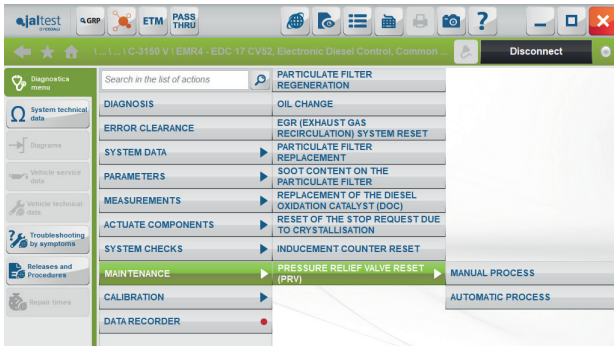
# VERSATILE

+ New tractor models.

# ENGINES AND TRANSMISSIONS

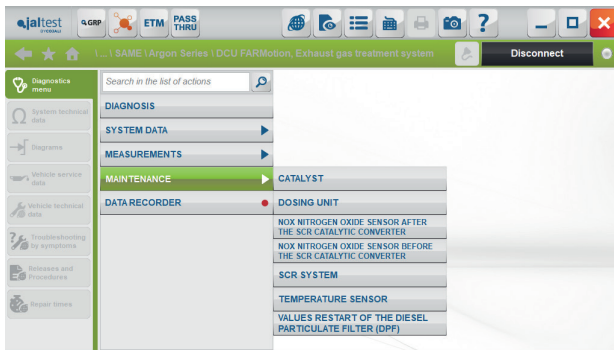
These systems are applicable in many brands such as Deutz-Fahr, Lamborghini, Same, etc.

## DEUTZ ENGINES



EMR4-EDC 17 CV52 system, actuations and maintenances.

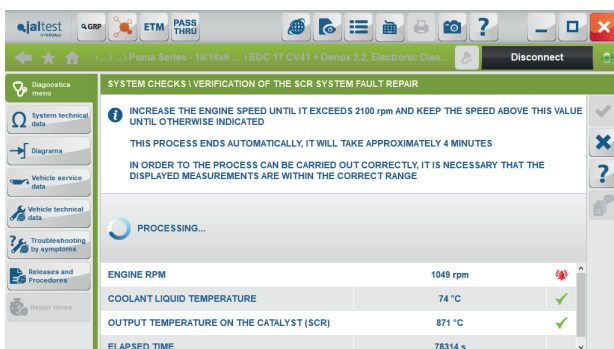
## MOTORES DEUTZ



FARMotion EDC 17 C53 system, system checks, maintenances, parameters and calibrations.

FARMotion DCU exhaust gas aftertreatment system, maintenances.

## FPT ENGINES



EDC 17 CV41 + Denox 2.2 system, checks.

## SISU ENGINES

EEM4F-EDC 17 CV41 system, checks and maintenances.

## ZF TRANSMISSIONS

ECCOM transmission, system check.