



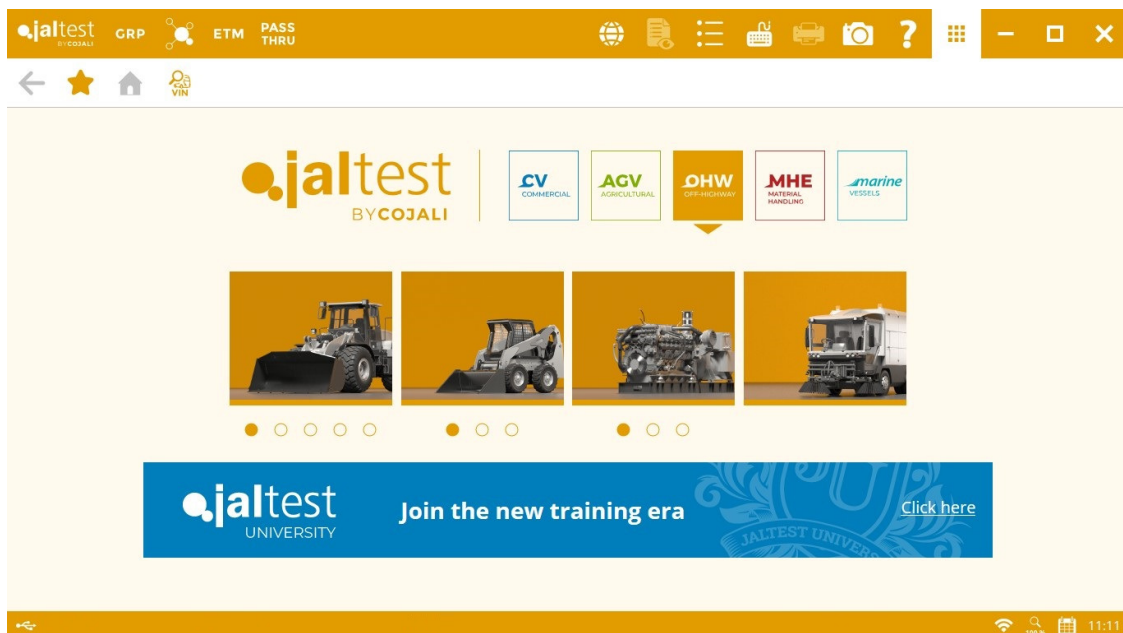
## INNOVATIONS 21.2

# SOFTWARE INNOVATIONS

The new software version **Jaltest 21.2** once again offers more improvements and innovations that consolidate this tool as a benchmark in **multibrand diagnosis** for commercial, agricultural and OHW (Off-Highway) vehicles, and vessels.

In this version, Jaltest changes its start window display by adding accesses to licence modules independently. Vehicles types from different groups cannot be mixed in the main window. Moreover, Jaltest includes a new module called **MHE** with coverage in material handling equipment: forklifts, boom lifts, scissor lifts, telescopic handlers, etc. and it can be purchased independently or as complement to **AGV** and/or **OHW**.

Jaltest keeps in memory the access of the last session for the next application restart.



**Jaltest ADS** advertising with available banners:

- **Jaltest Tools** with access to the catalogue of COJALI website.
- **Jaltest University** with access to this section of Jaltest website.
- **Jaltest Telematics** with access to the promotional video of predictive maintenance.

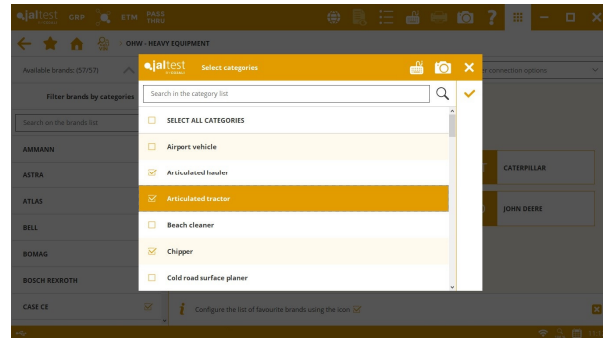
Banners change automatically and appear in any selected group **CV**, **AGV**, **OHW**, **MHE** or **MARINE**.

## OHW division and filters by vehicle category

- (1) OHW - HEAVY EQUIPMENT
- (2) OHW - COMPACT EQUIPMENT
- (3) STATIONARY ENGINE
- (4) STREET SWEEPER

In addition, all categories of vehicles and implements have been completed. This allows the display of brands according to the selected category.

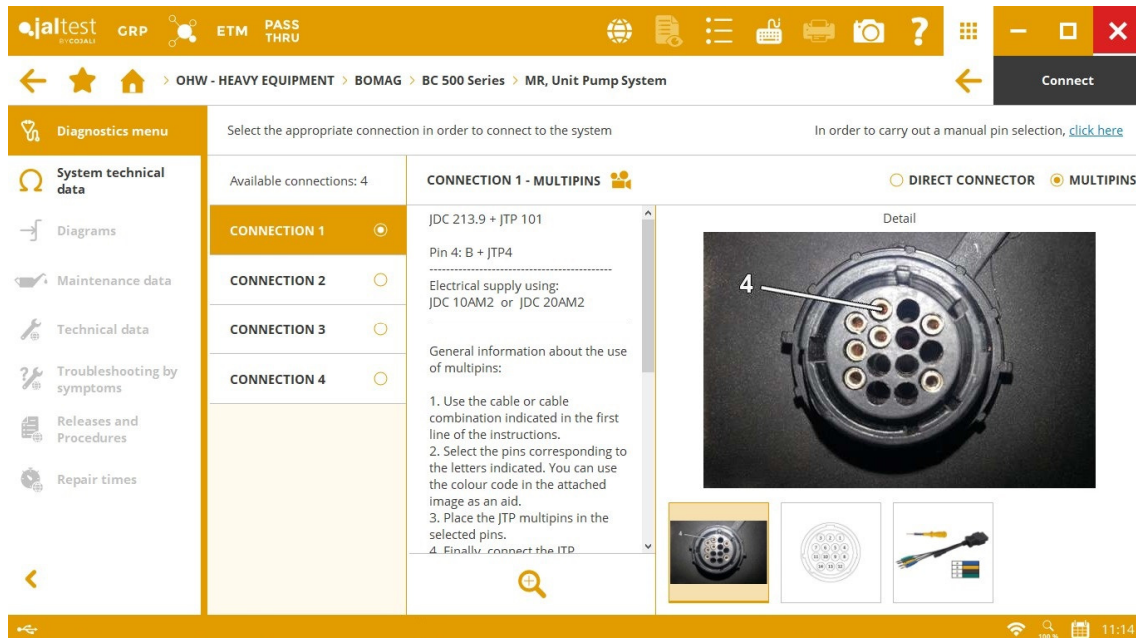
This does not mean that the brands configured as favourites are modified.



## Jaltest videos

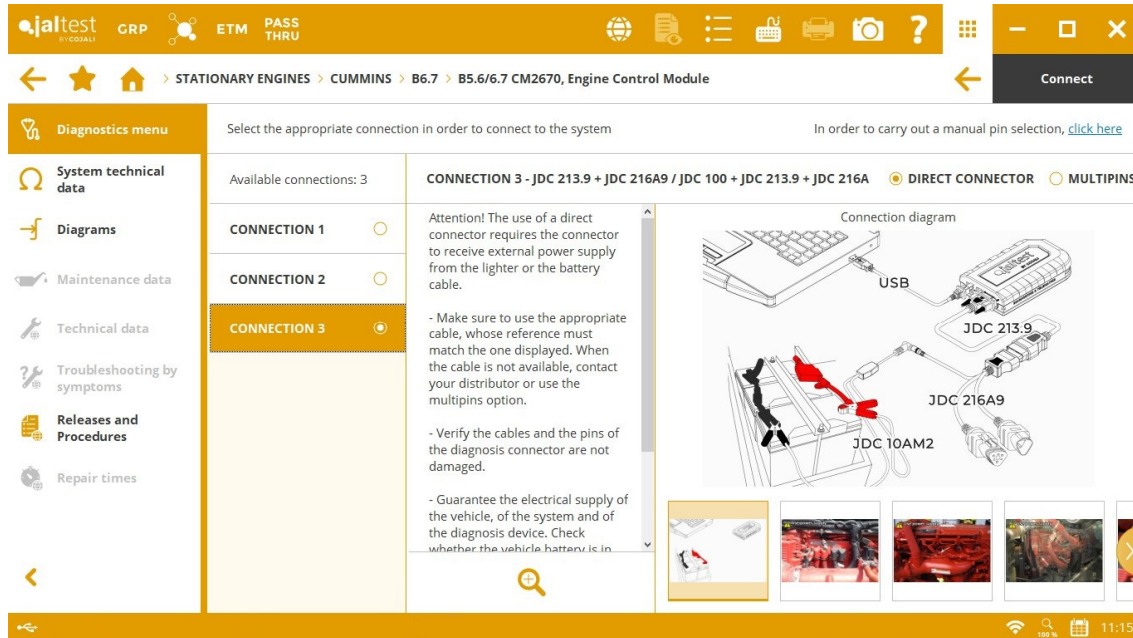
Updated Jaltest video menu with videos organised by categories. In addition, some of them have been related as procedure in the corresponding paths and models.

They can also be related to software functionalities, for example, in this version there is a video showing the use of multipins in all connections.



## Moving image, connection instructions

Moving images have been included for complex Jaltest Link V9 connections in which the JDC 100 cable and external power supply must be used. Moving images for all connections of Jaltest coverage will be included the next version.

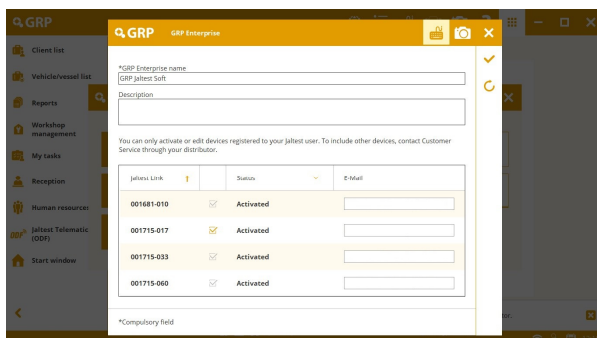


## Other innovations

- Text search in troubleshooting guides and procedures.
- Full-screen display of troubleshooting guides and procedures.

## GRP

### GRP Enterprise management from Jaltest

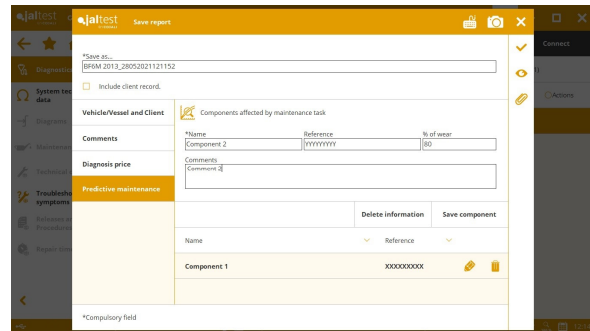
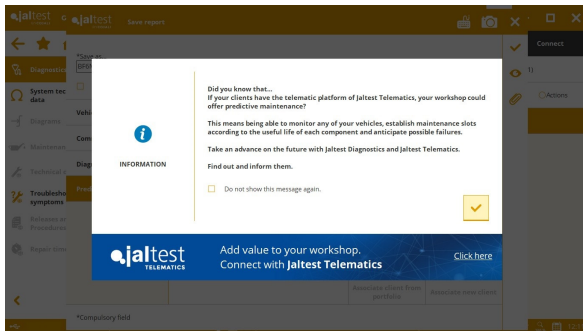


All devices registered in the same Jaltest user can create and manage GRP Enterprise directly from Jaltest.

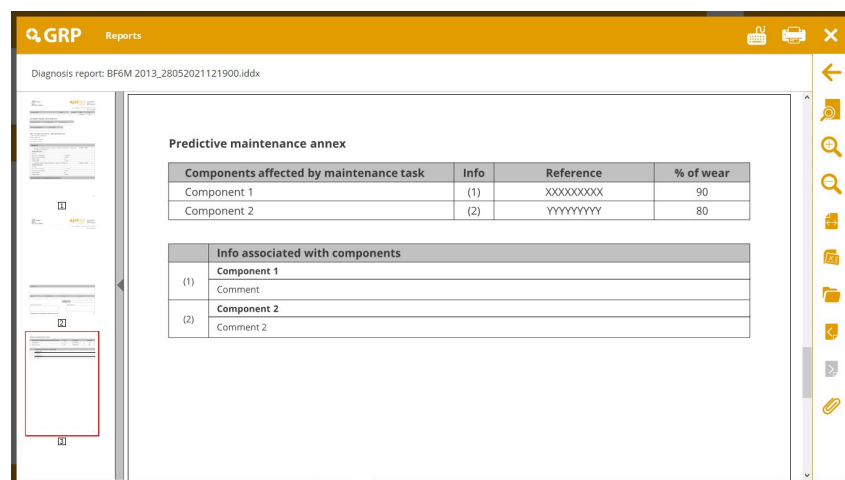
Available for Administrator users only.

## New “Predictive Maintenance” tab in reports

It is possible to include the components affected by the repair or maintenance task in reports, which are listed by name and reference. Also, it is possible to include a comment and the wearing percentage. If this new tab is filled in, it contributes to Jaltest predictive maintenance and Jaltest Telematics is advertised.



The diagnosis and/or maintenance report has all the information in an Annex.



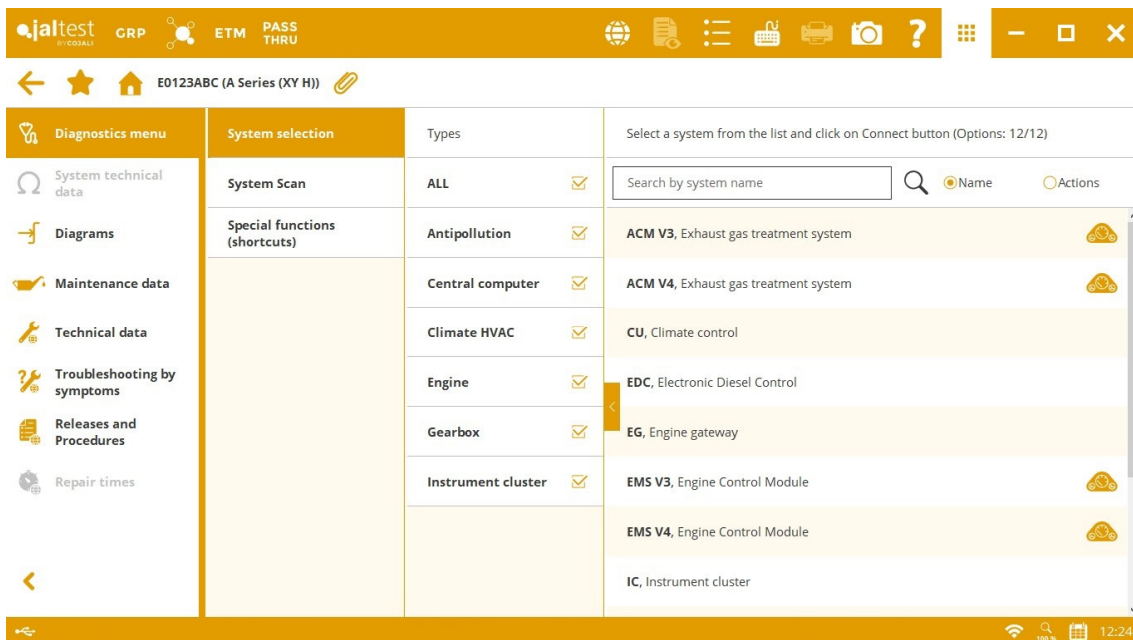
## Other innovations

- Files in maintenance reports can be attached (All GRP levels).
- Multiple clients and vehicles can be selected for the next functions:

Deletion  
Export

Also, the forms have more columns and new filters.

- The GRP form printing is improved.
- The vehicle documentation is available from the diagnosis menu.



The screenshot shows the 'System selection' screen in the jaltest OHW diagnostic software. The interface includes a top navigation bar with 'jaltest OHW' branding and various icons. Below the navigation bar, there's a breadcrumb trail showing 'E0123ABC (A Series (XY H))'. The main content area is divided into three columns: 'System selection', 'Types', and a description area. The 'System selection' column lists various systems like 'System Scan', 'Special functions (shortcuts)', 'Antipollution', 'Central computer', 'Climate HVAC', 'Engine', 'Gearbox', and 'Instrument cluster'. The 'Types' column shows checkboxes for each system, all of which are checked. The description area provides details for each selected system, such as 'ACM V3, Exhaust gas treatment system' and 'EDC, Electronic Diesel Control'. A search bar is visible at the top of the description area, and a 'Connect' button is mentioned in the instructions.

System selection	Types	Description
System Scan	ALL <input checked="" type="checkbox"/>	Select a system from the list and click on Connect button (Options: 12/12)
Special functions (shortcuts)		
Antipollution	<input checked="" type="checkbox"/>	ACM V3, Exhaust gas treatment system
Central computer	<input checked="" type="checkbox"/>	ACM V4, Exhaust gas treatment system
Climate HVAC	<input checked="" type="checkbox"/>	CU, Climate control
Engine	<input checked="" type="checkbox"/>	EDC, Electronic Diesel Control
Gearbox	<input checked="" type="checkbox"/>	EG, Engine gateway
Instrument cluster	<input checked="" type="checkbox"/>	EMS V3, Engine Control Module
		EMS V4, Engine Control Module
		IC, Instrument cluster

# BRANDS AND MODELS

---

Take into account that this document is only a summary of the most relevant information of this new version. For further information, please visit Jaltest Report.

## OHW - HEAVY EQUIPMENT

This version includes **WOLLARD** brand. Some of the new models in Jaltest are listed below.

### LINK BELT

Brand coverage extension with 6 new models of cranes on tracks.

### SUNWARD

Brand coverage extension with 38 new models.

## OHW - COMPACT EQUIPMENT

New **HANSA** brand that is also an innovation in STREET SWEEPERS.

### LIUGONG

Brand coverage extension with 7 new models.

# DIAGNOSIS AND SYSTEMS

---

Take into account that this document is only a summary of the most relevant information of this new version. For further information, please visit Jaltest Report.

## OHW - HEAVY EQUIPMENT

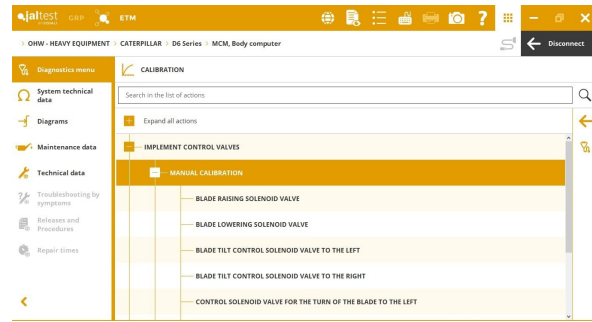
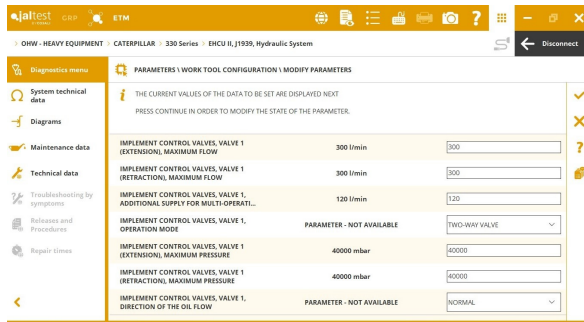
### CATERPILLAR

Models with **C-4.4/C-6.6** engines that communicate through SAE J1939 protocol, injection rail pressure check, cooling system check, high-pressure pump calibration, etc.

**EHCU-II** hydraulic system of crawl excavators, work tool configuration.

**MCM** central computer in **D Series** models, calibrations such as auxiliary lever calibration, tilt solenoid valve calibration, etc.





Moreover, there are new wiring diagrams available in this system, as well as in the **PTM** Powertrain Control Module in **D6 Series** models.

## DOOSAN

⊕ **E-POS** central computer for wheel loaders.

## JCB

**SCR** exhaust gas treatment system, catalytic converter regeneration.

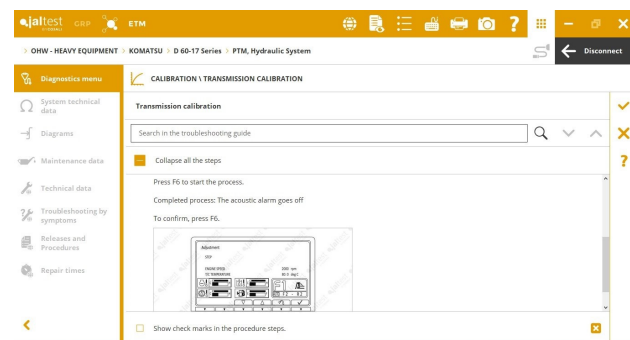
## KOMATSU

Systems for articulated haulers.

- ⊕ **ENG Monitor P** engine control.
- ⊕ **TRANS Monitor P** transmission.

Systems for dozers.

- ⊕ **PTM Monitor L** Powertrain.
- ⊕ **MON Monitor L** instrument cluster.



Also, the **Cummins 6 D125/6D140/6D170 11/15/23 CM2250** engine control system has been associated with the brand.

## VOLVO CE

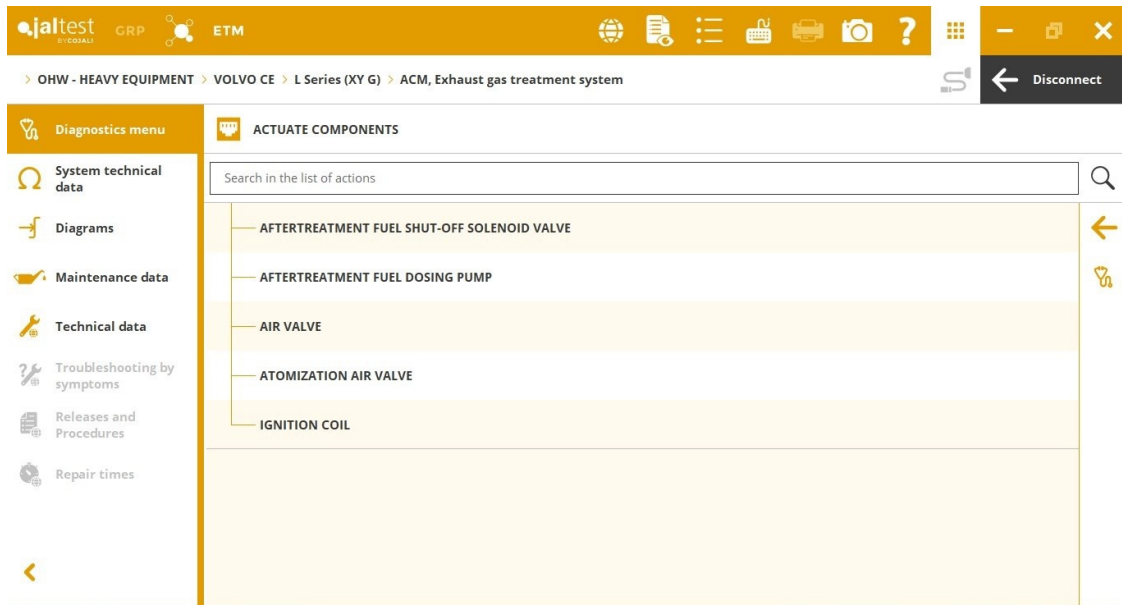
**EDC V2** engine control system, activation of the exhaust gas throttle actuator and parameter modification of the engine stop and engine derate.

Parameter modification of the engine oil in the **IC** instrument cluster, as well as in the **VECU** machine control system, and parameter modification of the transmission oil also in the **IC** instrument cluster and in the **TECU** articulated hauler control system.

**HMICU** machine electronic control unit, idle shutdown timer modification.



**ACM** exhaust gas aftertreatment system, aftertreatment fuel dosing and activations such as air purge valve activation, fuel cut-off solenoid valve activation, etc.



## OHW - COMPACT EQUIPMENT

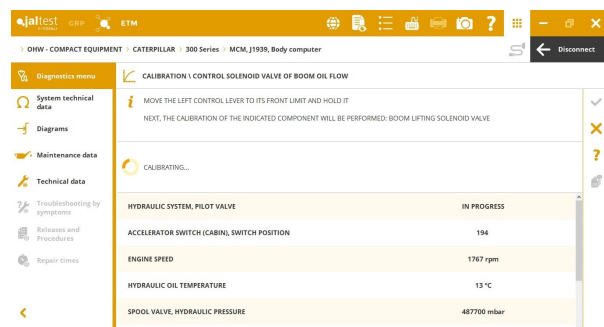
### CATERPILLAR

Models with **C-4.4/C-6.6** engines that communicate through SAE J1939 protocol, injection rail pressure check, dosing module activation, high-pressure pump calibration, etc.

**EHCU-II** hydraulic system of crawl excavators, work tool configuration.

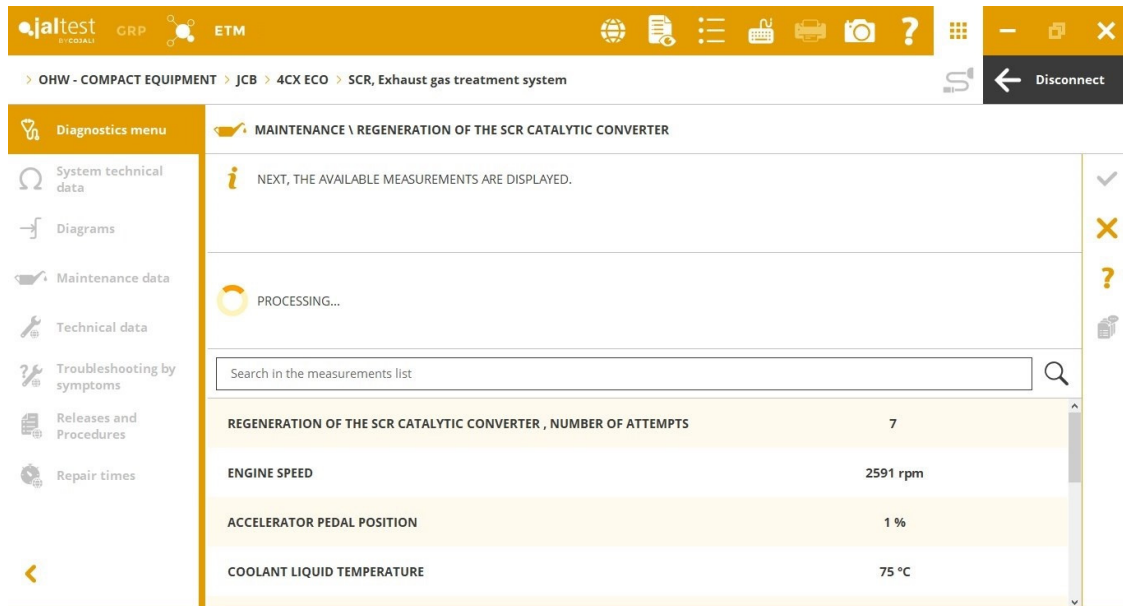
**MCM** central computer of crawl excavators, calibrations such as bucket valve calibration, machine rotation valve calibration, etc.

Moreover, there are new wiring diagrams available in this system for **300 Series** and **D Series** models.



## JCB

**SCR** exhaust gas treatment system, catalytic converter regeneration.



## VOLVO CE

**HMICU** machine electronic control unit, idle shutdown timer modification.

# STATIONARY ENGINE

## CUMMINS

⊕ **E6D125/6D140/6D170 11/15/23 CM2250** engine control system.

**QSL9 CM2250** engine control system, regeneration and reset of the Diesel Particulate Filter.

**QSX 11.9/15 CM2250** engine control system, operation data, activations, checks, parameter modification and maintenance such as DOC catalytic converter maintenance or particulate filter replacement among others...

**X12 CM2350** engine control system, SCR catalytic converter efficiency test and soot particulate sensor regeneration.

## DEUTZ

New compatibility codes in **EDC 17 CV52** and **EDC 17 CV54** engine control systems.

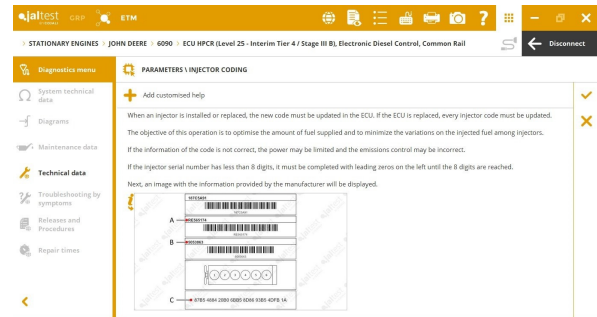
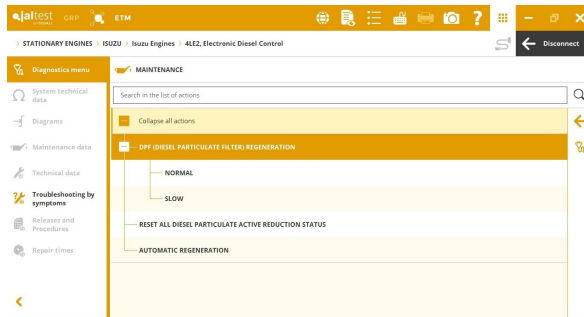
**EMR4 - EDC 17 CV52** engine control system in engines with CRT technology, Diesel Particulate Filter replacement and diesel particulate filter soot content reset.

## ISUZU

**4LE2 on CAN** engine control system, new system functionalities, activations of injectors, EGR valve, throttle actuator in the intake manifold, as well as cylinder cut-out, injector coding, Diesel Particulate Filter regeneration, etc.

## JOHN DEERE

⊕ **ECU HPCR (Level 25)** Interim Tier 4/Stage IIIB engine control system.



## KUBOTA

**ACU** exhaust gas aftertreatment system, checks and maintenance such as the inducement mode check.

## PERKINS

**1204E/1206E** and **1204F/1206F** engine control system that communicates through SAE J1939 protocol, Diesel Particulate Filter regeneration operation test, injection rail pressure test, cooling system check, etc.

Moreover, there are new wiring diagrams available in **1103C** and **1104C Tier 2** engines, as well as in **403F** and **404F Tier 4** engines.

## VOLVO PENTA

**EMS V3** system, modification of the injection correction factor.

Moreover, there are new wiring diagrams in **TTAD1640-42GE** and **TAD1641-43VE** models.

## YANMAR

Wiring diagrams in **3TN88F** model.