



## INNOVATIONS 20.3

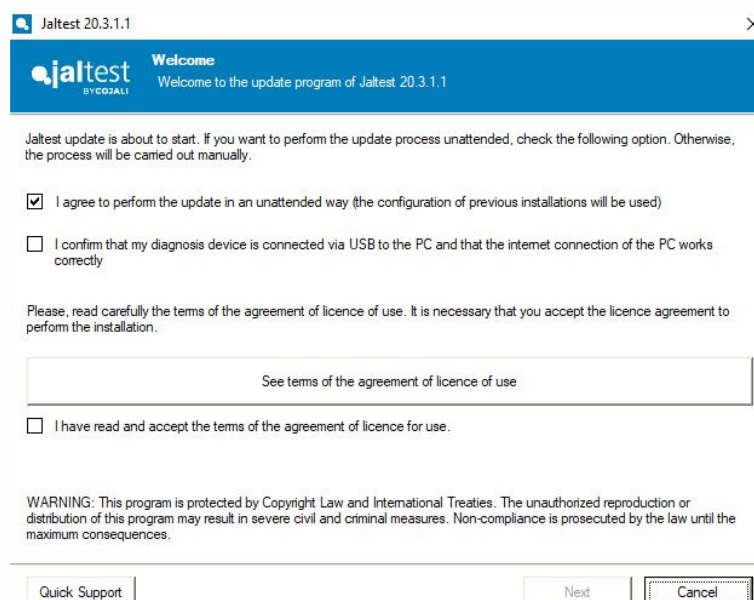
# SOFTWARE INNOVATIONS

The new software version **Jaltest 20.3** once again offers more improvements and innovations that consolidate this tool as a benchmark in **multibrand diagnosis** for commercial, agricultural and OHW (Off-Highway) vehicles.

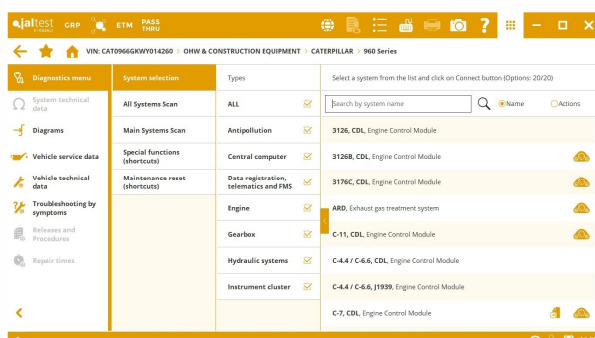
Next, the most relevant software innovations are shown.

## Update process without user intervention

The update process without user intervention is based on the configuration of previous installations.



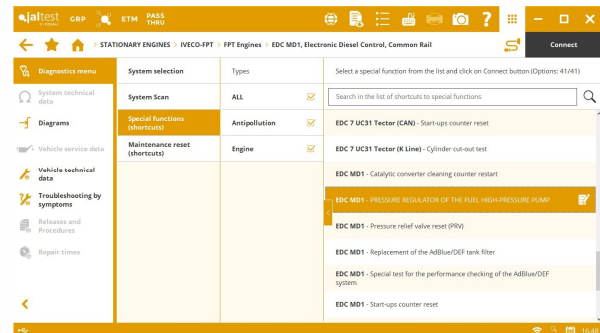
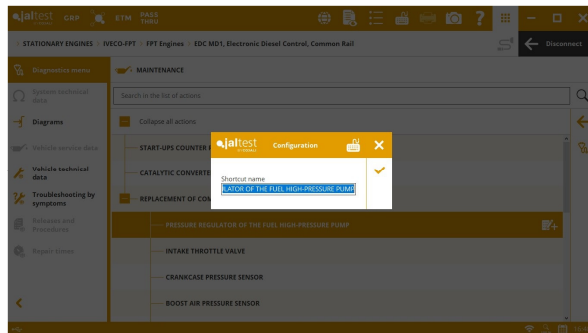
## Vehicle data in the selection path



The VIN number or the number plate appears in the model selection path with accesses to the vehicle from GRP or from the vehicle browser.

## Shortcuts to special functions

When completing an action of a system (only if it has been carried out), the user can include it in the shortcut menu and customise the shortcut list to special functions.

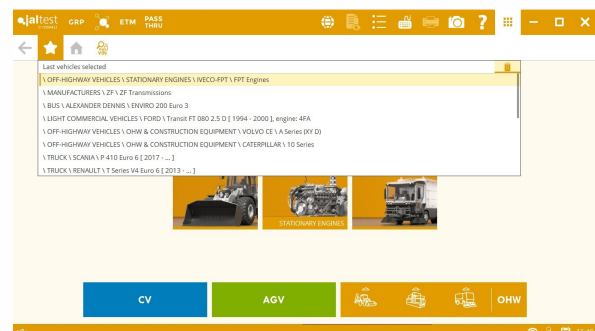


## Others

**Browser of the model families.** A search filter has been included in the display form of the brand model list.

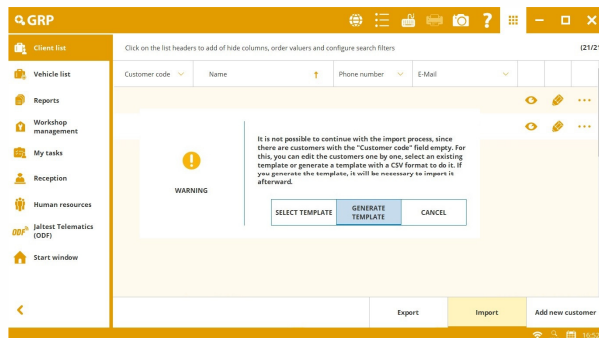
**Edition of the table column size.** The width of the table columns can be modified in the course of an action allowing the user to display better the data shown.

**Deletion of the last diagnosed vehicle record.**



# GRP

## Export/Import client list



It is possible to export/import the client list through Excel or CSV files quickly and easily. This allows the user to share the clients created in Jaltest with others from other platform or ERP of their company, and vice versa.

To do this, a new compulsory and single field called “Customer Code” has been created for each client. This field must be

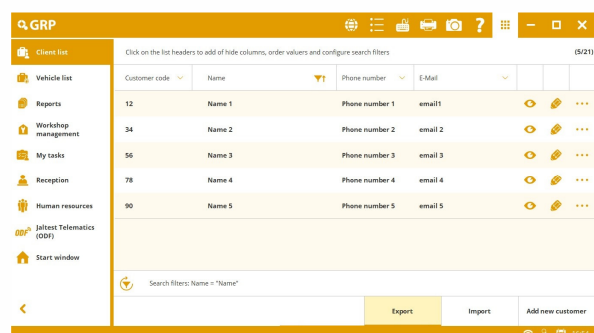
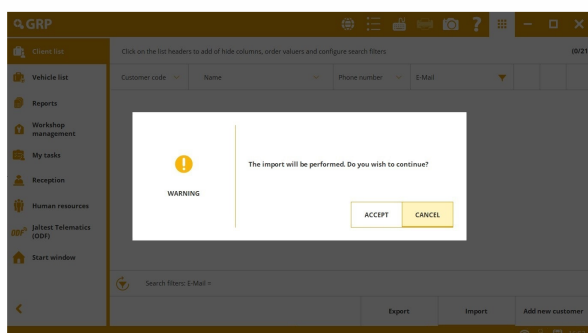
completed before using this function. When clicking on “Import” button, the programme will advise the user about it providing them with a template so that they can fill out this field previously for all their current clients in GRP.

If the client list in GRP is empty, first of all, “Export” function should be used to create a template where table headers are generated. It is important not to modify the header value or column position of the table.

	A	B	C	D	E	F	G	H	I	J	K
1	Customer Code	Name	VAT No.	Address	City	Postal code	Province	Country	Phone number	Fax	email
2	11	Name 1	CIF 1	Address 1	City 1	Postal code 1	Province 1	Country 1	Phone number 1	Fax 1	email 1
3	23	Name 2	CIF 2	Address 2	City 2	Postal code 2	Province 2	Country 2	Phone number 2	Fax 2	email 2
4	45	Name 3	CIF 3	Address 3	City 3	Postal code 3	Province 3	Country 3	Phone number 3	Fax 3	email 3
5	67	Name 4	CIF 4	Address 4	City 4	Postal code 4	Province 4	Country 4	Phone number 4	Fax 4	email 4
6	89	Name 5	CIF 5	Address 5	City 5	Postal code 5	Province 5	Country 5	Phone number 5	Fax 5	email 5

If clients in GRP already exist, “Export” function should be used to export an empty template or the template with data of the

current clients. In this way, it is possible to update the data from them. By using these templates and creating data in the table, you can already import all the clients of your ERP and keep GRP up to date in Jaltest.

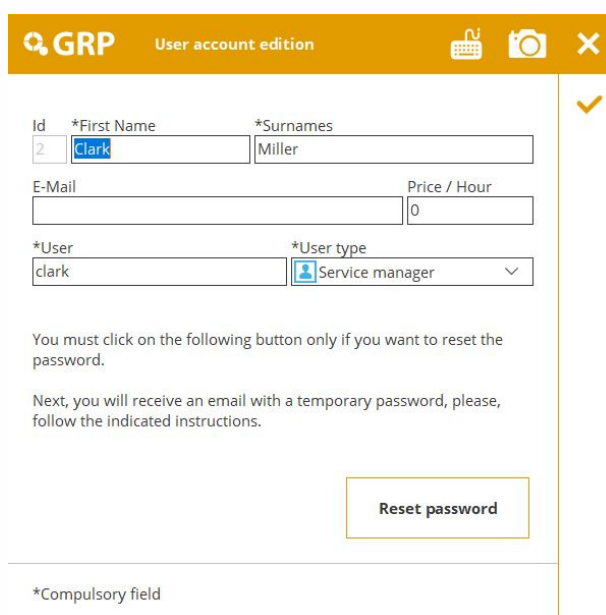


## Improvement of client and vehicle list forms

Possibility of showing more columns in the vehicle and client lists, show/hide columns function, possibility of ordering new filters, etc.

## Price/Hour by user

The possibility of defining a Price/Hour for each user in GRP allows the user to create diagnosis and repair order reports with more accurate data. If a Price/Hour is not defined for each user, the one defined in the Configuration menu (user settings)> Company data will be used.



The screenshot shows the 'GRP User account edition' form. It includes fields for Id (2), \*First Name (Clark), \*Surnames (Miller), E-Mail, Price / Hour (0), \*User (clark), and \*User type (Service manager). A 'Reset password' button is located at the bottom right. A note states: 'You must click on the following button only if you want to reset the password. Next, you will receive an email with a temporary password, please, follow the indicated instructions.'

\*Compulsory field

# BRANDS AND MODELS

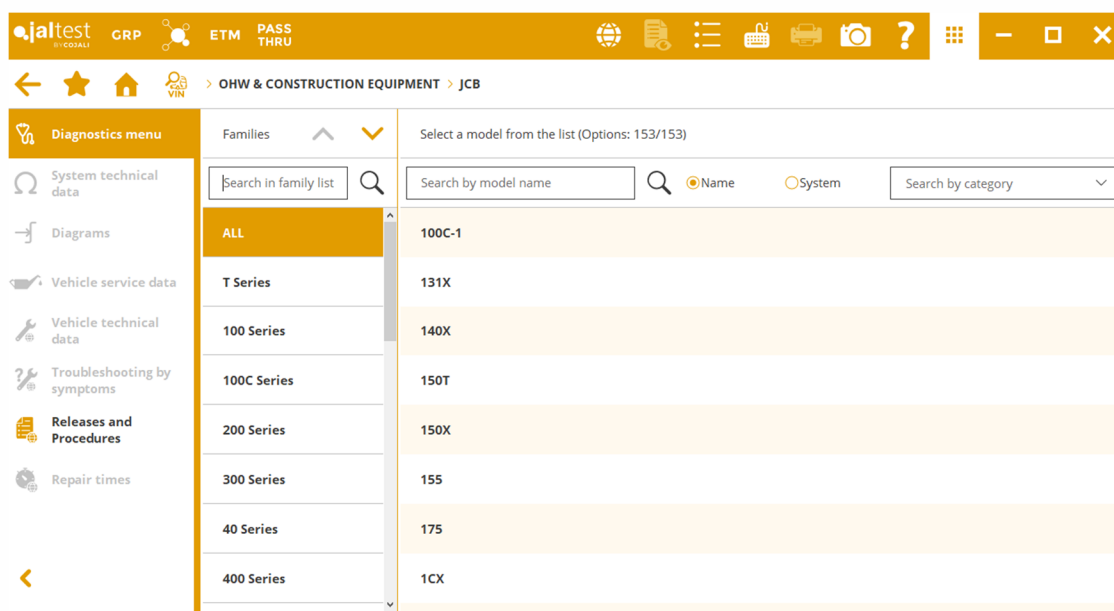
This version, brands such as **DITCH WITCH**, **LEEBOY**, **LIUGONG**, **MECALAC**, **SKYJACK** and **XCMG** have been included in OHW & CONSTRUCTION EQUIPMENT.

## CUMMINS

New **Cummins F3.8**, **Cummins B6.7**, **Cummins X15**, etc. models to cover the Stage V engines.

## JCB

Reorganisation of the brand with 24 families and 153 models.



# DIAGNOSIS AND SYSTEMS

Take into account that this document is only a summary of the most relevant information of this new version. For further information, please visit Jalttest Report.

## OHW & CONSTRUCTION EQUIPMENT

### BOBCAT

⊕ **DCU** exhaust gas aftertreatment system for models with SCR catalytic converter.

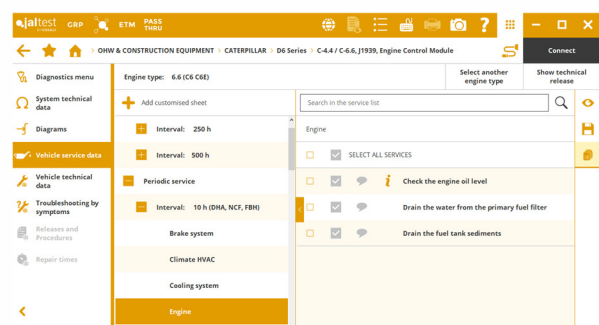
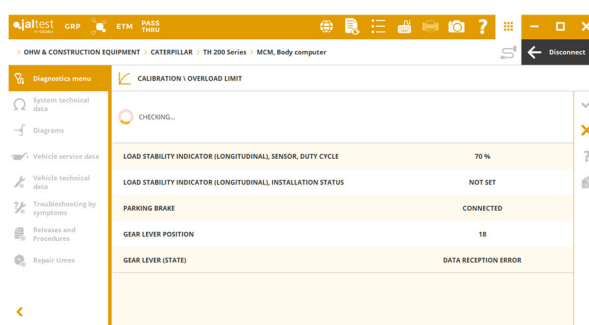
## CATERPILLAR

⊕ **MCM** Central Computer developed in telescopic handlers.

Models with **C-9.3**, **C-13** and **C-15** engines and **ARD** device, regeneration for cleaning the amount of ash in the Diesel Particulate Filter.

**SCR/DEF** exhaust gas aftertreatment system, system precision test.

The wiring diagrams available on articulated hauler and bulldozer, as well as the maintenance data available on bulldozer and wheel loaders have also been expanded.



## HITACHI

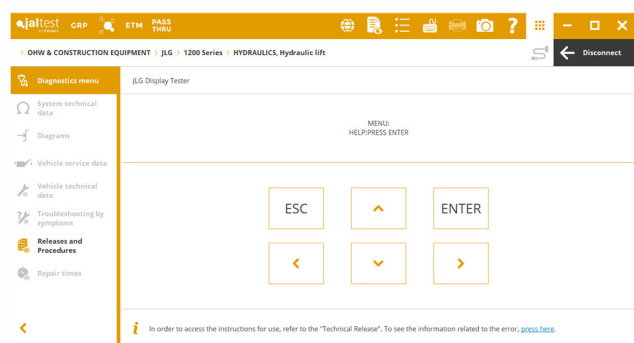
⊕ New systems developed for wheel loaders: **ICF** Gateway, **MC** Central Computer, **MON** and **CMON** Instrument Clusters.

## JCB

**Transmaster** transmission, solenoid valve check.

## JLG

⊕ **HYDRAULICS** hydraulic system available for all brand models and developed with advanced functions.



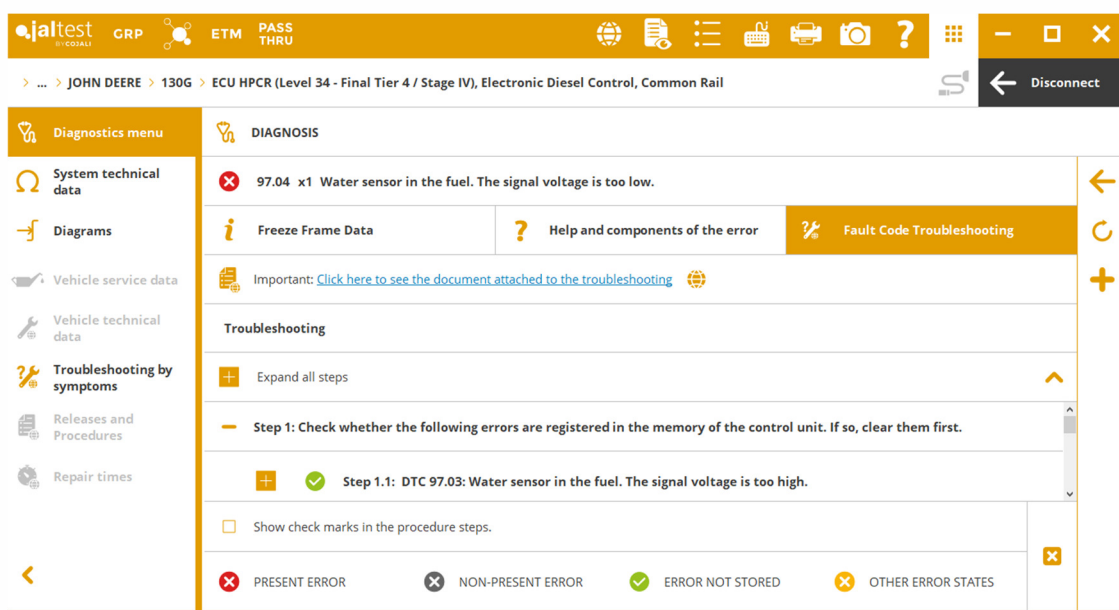
## JOHN DEERE

⊕ New systems developed for motor graders: **FLC** Central Computer, **OC1** Control Panel, **CMU** Instrument Cluster and **HFWD** Power Train module.

⊕ New systems developed for articulated haulers: **TCM** Transmission, **CC2** Central Computer and **JDL** Telematic Module (for the **400D** model).

⊕ **3TNV88F EDC Yanmar** engine control system for mini excavators.

The wiring diagrams available on mini excavators, as well as the technical data of the engine types with **Level 21** control system, which also includes error code troubleshooting, have been expanded. The **Level 33** and **Level 34** control systems also offer diagnosis error troubleshooting.



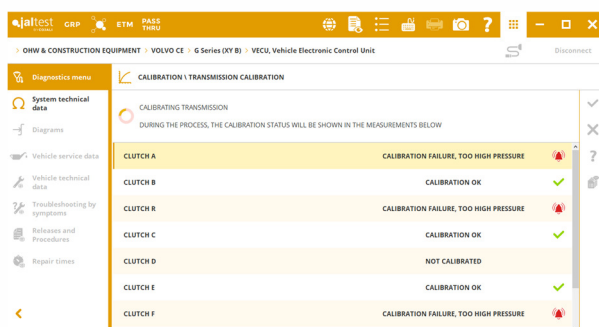
## MANITOU

**IC** instrument cluster in telescopic handlers, maintenance reset.

**MC** central computer in telescopic handlers, overload limit calibration.

New wiring diagram configurations in **TCU** transmission of Sauer Danfos.

## VOLVO



**VECU** Vehicle Electronic Control Unit in motor graders, transmission calibration.

**VECU** vehicle control system in wheel loaders, system checks.



⊕ **V2ECU** Vehicle Electronic Control Unit 2 developed for wheel loaders.

The wiring diagrams available on wheel loaders and excavators, as well as the technical data of the **D13H, D16J, D4H, D4J, D6H, D6J** and **D8J** engine types have also been expanded.

## STATIONARY ENGINE

### CUMMINS

**QSF 3.8 CM2350** engine control system, inducement mode deletion in the SCR exhaust gas aftertreatment system.

**QSB 4.5/6.7 CM2350** engine control system, fuel control solenoid valve check and SCR catalytic converter regeneration, among other new functions.

**QSL9 CM2350 L102/L107** engine control system, VGT actuator check, engine protection parameters, maintenance, Diesel Particulate Filter and SCR catalytic converter regeneration, etc.

**QSX15 CM2350** engine control system, fan actuation, exhaust gas aftertreatment fuel leakage test, Diesel Particulate Filter regeneration, etc.

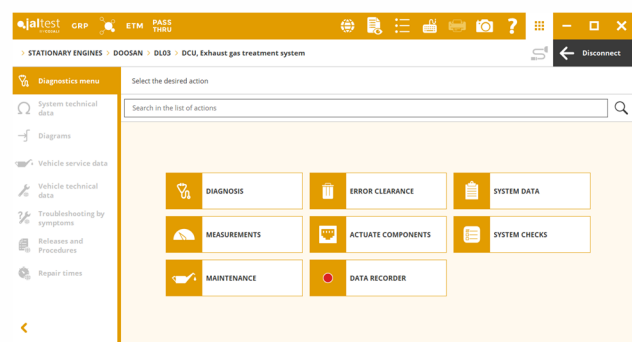
### DEUTZ

⊕ **EMR5 – EDC MD1** Stage V engine control system.

### DOOSAN

⊕ **DCU** exhaust gas aftertreatment system.

**DL02/DL03** engine control system, desulphurisation process.



### ISUZU

Control system of **4JJ1-TC** and **4HK1-TC** engines, automatic process and forced cleaning process of the SCR catalytic converter.

## IVECO-FPT

**EDC MDI** engine control system, AdBlue/DEF dosing system checks and system reset after replacing components such as the crankcase pressure sensor, the intake throttle valve, the AdBlue/DEF tank, etc.

## KUBOTA

**E-CDIS** engine control system, Pressure Relieve Valve reset.

## PERKINS

Control system of **854E** and **854F** engines, soot load reset and Diesel Particulate Filter replacement.

Control system of 1204F, 1206F, 1204E and 1206E engines, fuel pump calibration.

## YANMAR

⊕ New engine control system.

