



jaltest

OHV

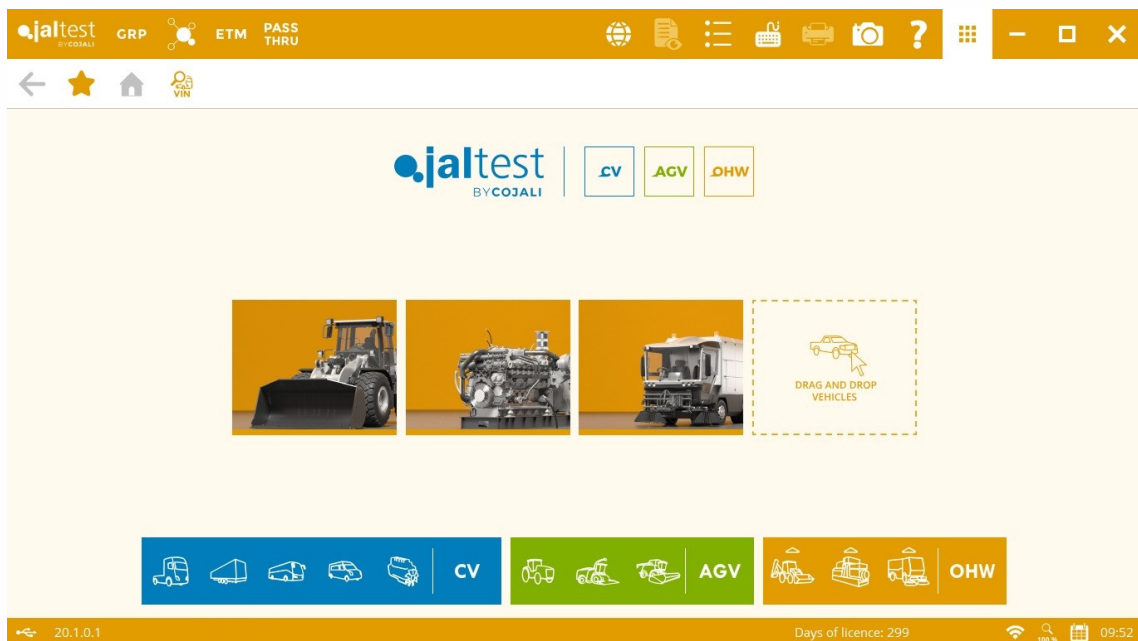
OFF-HIGHWAY VEHICLES

INNOVATIONS 20.1

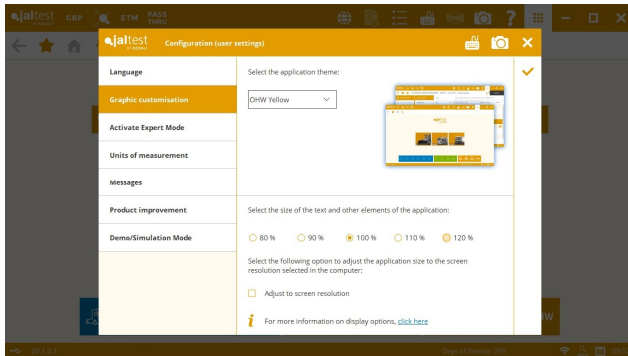
SOFTWARE INNOVATIONS

The new software version **Jaltest 20.1** once again offers more improvements and innovations that consolidate this tool as a benchmark in **multibrand diagnosis** for commercial, agricultural and OHW (Off-Highway) vehicles.

This version shows the **new graphic interface of Jaltest**, characterised by new improved and modern design lines, more legible content and more direct accessibility. This improvement in the visualisation of the content means a great advantage for Jaltest users who can now find and manage the information in an easier and more intuitive way. Apart from these graphic changes, both the runtimes and installation times have been improved, improving in this way its speed.



Next, some examples of displays and aspects of the application, with a considerable improvement regarding the graphic interface, are shown.

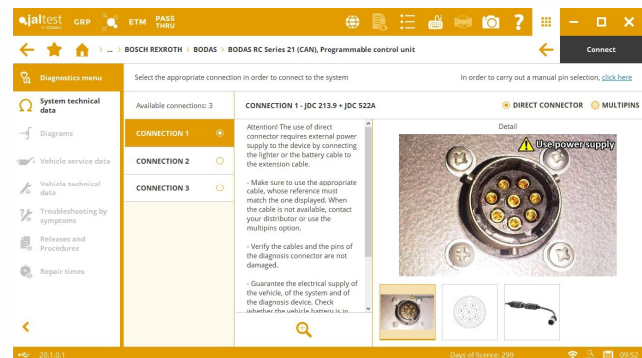


Graphic customisation.

Configuration of the screen resolution, text size and other elements of the application. Option to adjust the application size to the resolution of the selected screen in the PC.

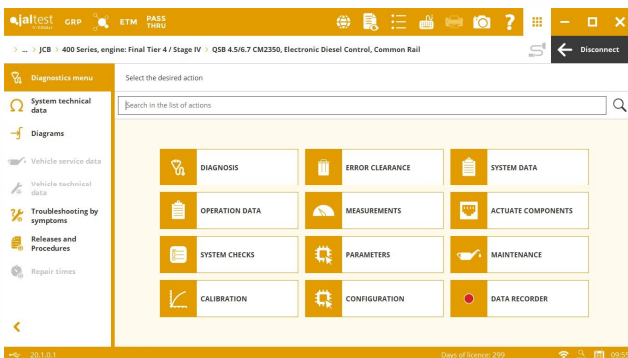
Connection selection.

The connections associated to a system are listed at the left, the connection instructions remain always visible, navigating through the images is easier, etc.



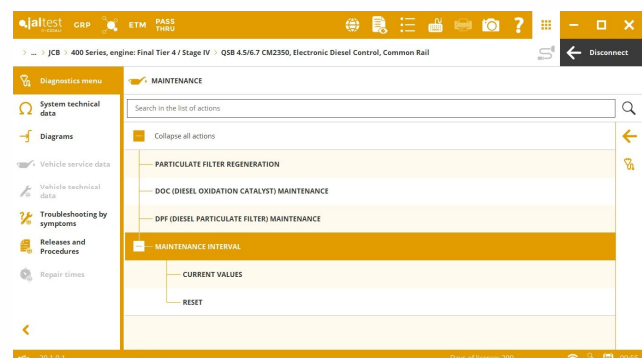
Main menu of a system.

Classification of the main types of actions when connecting to a system, which allow you to know quickly the coverage of a system. Improvement of the action searcher.



System actions in tree diagram.

System actions organised in tree diagram and actions grouped together in folders. The "DIAGNOSIS" function is always available on the right bar through the button with the corresponding icon.



Other innovations

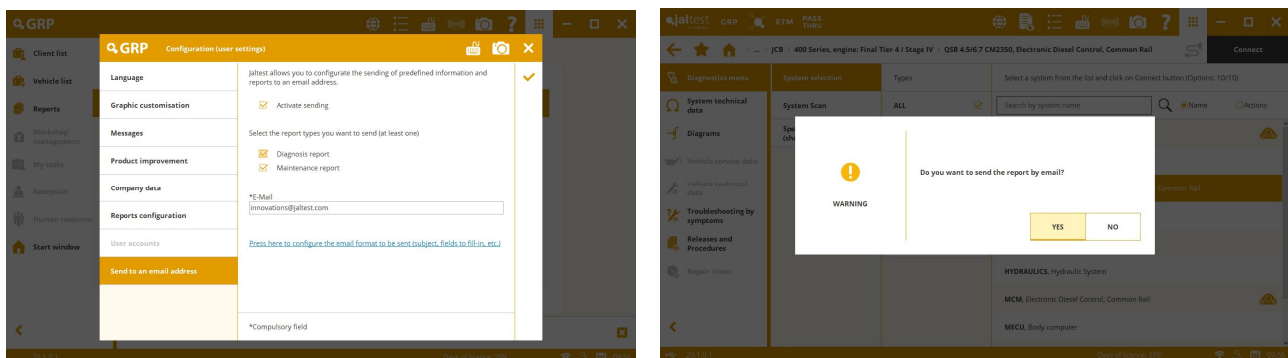
Other functionalities of the version are listed below:

- **Countdown timer** in procedure steps and troubleshooting guides.
- **Search filter** in the measurement list of a step of an action.
- **Component filter** in system technical data by configuration of wiring diagram.

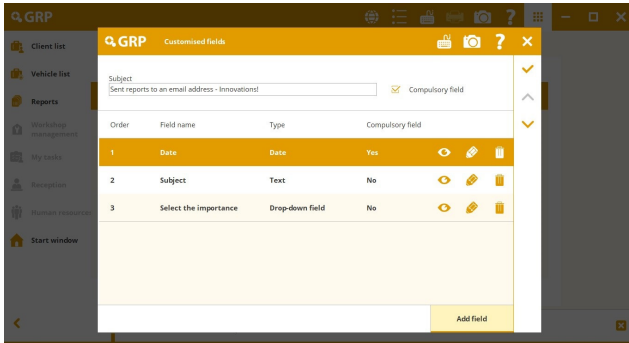
GRP

Sending of reports to an email address

Jaltest allows you to configure the sending of predefined information and reports to an email address through the **“Send to an email address”** function available in the **“Configuration”** menu of GRP. Once the sending has been activated, the program will suggest this possibility when generating a report. The report will be sent by an email with the configured format (subject, fields of the body of the email, etc.).



A new column for the sending management has also been included in the GRP report list. The user will be able to send reports marked as **“Pending to be sent”** or to resend a report.

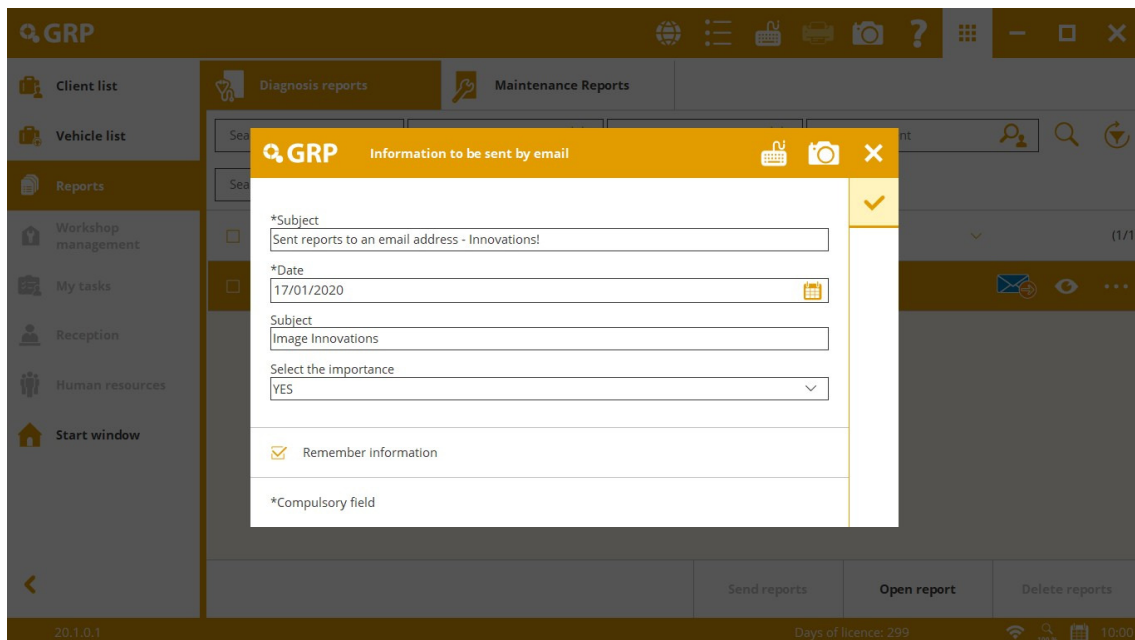


The user can customise as many fields as desired and the email subject, as well as define if they are compulsory input data or not. The field types can be as following:

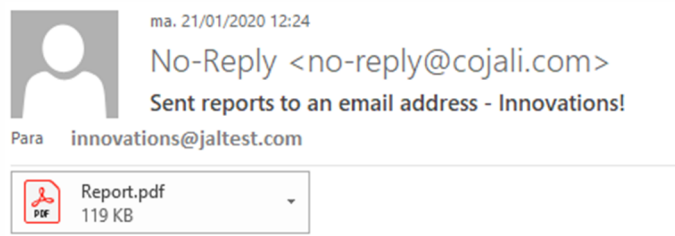
- Text
- Date
- Drop-down field

The image shows an example with three fields.

Example, sending of a report with Jaltest:



Received email



Date: 17/01/2020
 Subject: Innovations image
 Select the importance: SI

BRANDS AND MODELS

Take into account that this document is only a summary of the most relevant information of this new version. For further information, please visit Jaltest Report.

This version, the **SCHAEFF** brand of OHW & CONSTRUCTION EQUIPMENT has been included.

CASE CE

Reorganization of the brand that has 22 new families and 135 models.

DIAGNOSIS AND SYSTEMS

Take into account that this document is only a summary of the most important information of this new version. For further information, please visit Jaltest Report.

OHW & CONSTRUCTION EQUIPMENT

⊕ New **JDC 546A** cable to connect and calibrate the **ZF ErgoPower** transmission.

The screenshot displays the JALTEST diagnostic software interface. At the top, there is a navigation bar with the JALTEST logo and various icons. Below it, a breadcrumb trail shows the path: OHW & CONSTRUCTION EQUIPMENT > JCB > 400 Series, engine: Final Tier 4 / Stage IV > ZF - Ergopower, Transmission. A 'Connect' button is visible on the right.

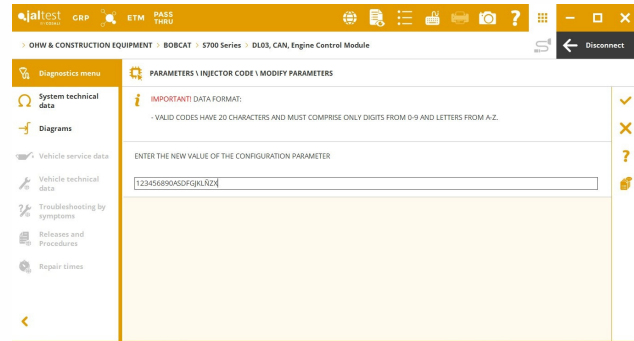
The main content area is titled 'CONNECTION 1 - JDC 213.9 + JDC 546A'. It includes a 'Diagnostics menu' on the left with options like System technical data, Diagrams, Vehicle service data, etc. The central text provides instructions for connecting the system, such as 'Read the information to connect to the system' and 'In order to carry out a manual pin selection, [click here](#)'. It also lists safety and preparation steps: 'Make sure to use the appropriate cable, whose reference must match the one displayed...', 'Verify the cables and the pins of the diagnosis connector are not damaged.', 'Guarantee the electrical supply of the vehicle...', 'Avoid connecting the diagnosis device with a moving vehicle.', and 'The remaining conditions of use may be found in the program.'

On the right, there is a large image of the JDC 213.9 + JDC 546A cable. Below the main text, there are four small thumbnail images: a vehicle interior, a diagnostic connector, a wiring diagram, and the cable itself.

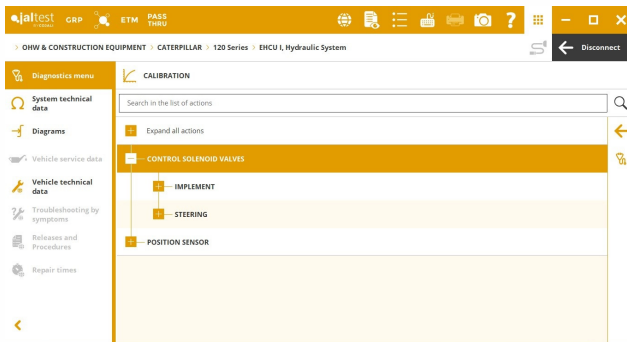
BOBCAT

⊕ New **JDC 547A** cable for control systems of **DOOSAN DL02** and **DL03** engines. New system checks, calibrations and injector coding have been developed in these systems.

⊕ New **MCONT** central computer developed for telescopic handlers.



CATERPILLAR CE



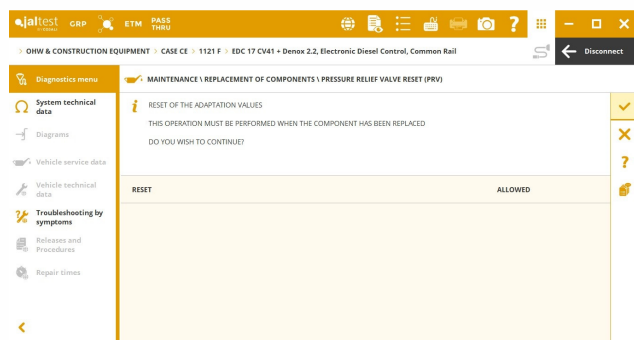
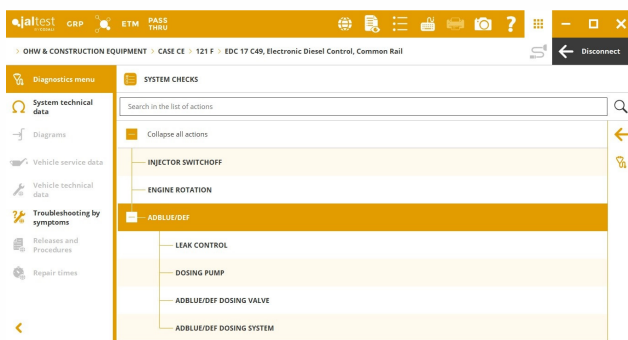
⊕ New **EHCUI** hydraulic system developed for motor graders.

⊕ New **MCM** central computer developed for wheel loaders.

CNH CE GROUP

EDC 17 C49 control system of **FPT engines**, new checks of the exhaust gas treatment system (AdBlue/DEF leak control, AdBlue/DEF dosing pump, etc.) and maintenances such as the start-ups counter reset.

EDC 17 CV41 + Denox 2.2 engine control system, new maintenances such as the reset of the Pressure Relief Valve (PRV).

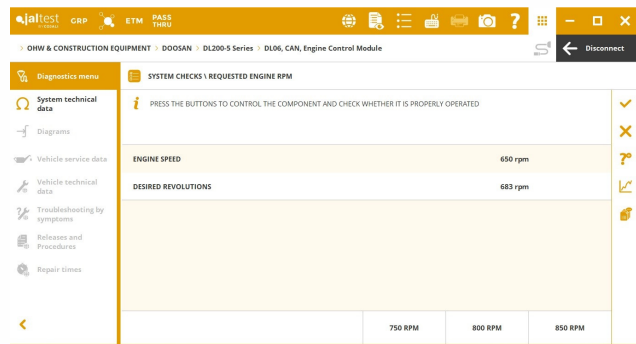
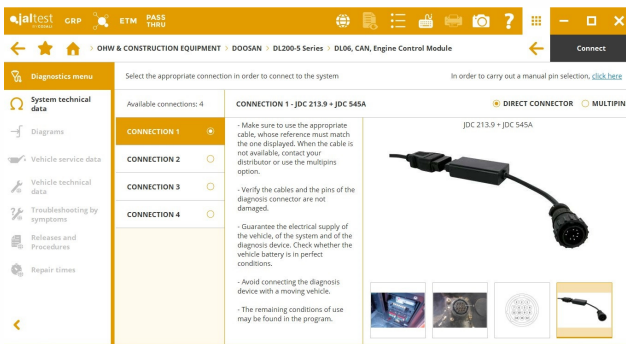


DOOSAN

- ⊕ New **JDC 545A** cable.
- ⊕ New **E-EPOS** system developed for **DX 3 Series** excavators.

EDC DL03 engine control system, system checks and calibrations. It is worth noting the dynamic test of the fuel dosing valve.

EDC DL06 engine control system, actuations, system checks and maintenances such as the regeneration, the ash load reset and the DPF replacement.



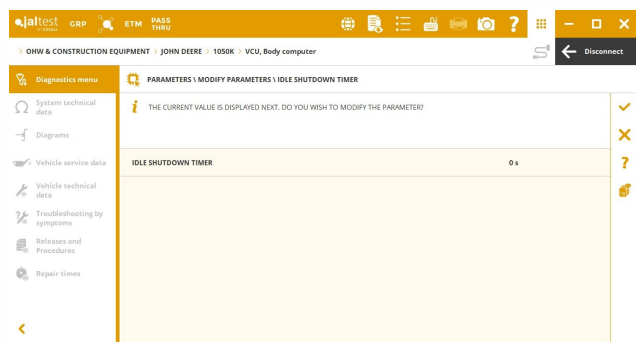
HITACHI

MC central computer, parameter setting of the implement for excavators.

JOHN DEERE CE

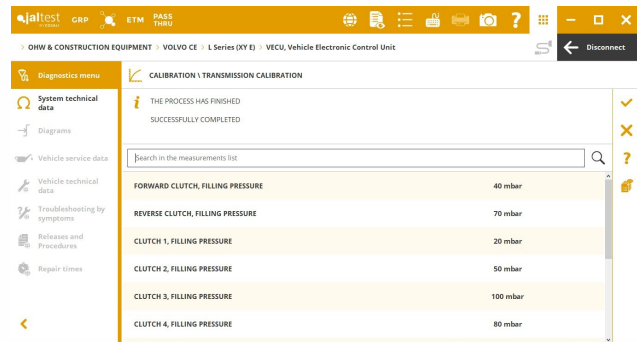
- ⊕ New systems of the **PDU** instrument cluster display and **VC2** central computer developed for backhoe loaders.

Timer setting of automatic stop of the engine at idle speed rates in the **VCU** central computer of backhoe loaders.



VOLVO CE

Vehicle Electronic Control Unit (**VECU**), new system checks and calibration of the transmission in wheel loaders.



STATIONARY ENGINE

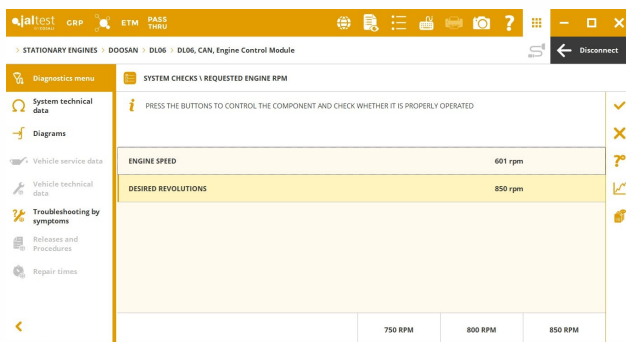
DEUTZ

Control system of the **Deutz EMR4 - EDC 17 CV52** engine, new parameters such as the configuration of the idle speed rate.

DOOSAN

⊕ New **JDC 545A** and **JDC 547A** cables, the latter for **DL02** and **DL03** engines.

EDC DL03 engine control system, system checks and calibrations. It is worth noting the dynamic test of the fuel dosing valve.



EDC DL06 engine control system, actuations, system checks and maintenances such as the regeneration, the ash load reset and the DPF replacement.

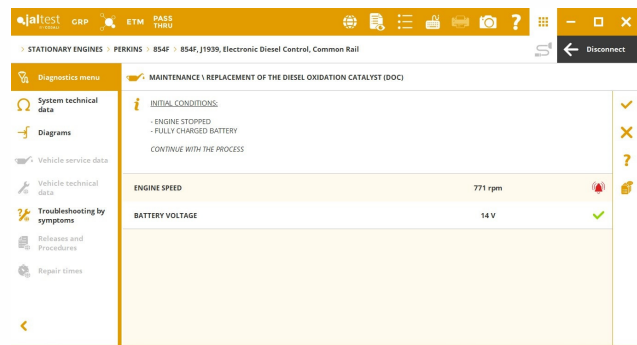
IVECO-FPT

EDC 17 C49 control system of **FPT engines**, new checks of the exhaust gas treatment system (AdBlue/DEF leak control, AdBlue/DEF dosing pump, etc.) and maintenances such as the start-ups counter reset.

EDC 17 CV41 + Denox 2.2 engine control system, new maintenances such as the reset of the Pressure Relief Valve (PRV).

PERKINS

854F engine control system, cylinder cut-out, high-pressure fuel test, inducement mode reset, component reset such as the NOx sensor or the SCR catalytic converter, and replacements of the DOC catalytic converter and the cooler of the Exhaust Gas Recirculation system (EGR).



STREET SWEEPERS

TENAX

EDC 17 C49 control system of **FPT engines**, new checks of the exhaust gas treatment system (AdBlue/DEF leak control, AdBlue/DEF dosing pump, etc.) and maintenances such as the start-ups counter reset.

TECHNICAL INFORMATION

Take into account that this document is only a summary of the most important information of this new version. For further information, please visit [Jaltest Report](#).

Maintenance and technical data of the vehicle

Engine types in **CATERPILLAR CE** and stationary engines, diesel engines 3,3 (C3B), 6,6 (C6) and 9,3 (C9).

Wiring diagrams and technical information

CASE CE

EDC 17 CV41 + Denox 2.2 engine control systems and ZF ErgoPower transmission for wheel loaders.

CATERPILLAR CE

Extension of wiring diagrams in all vehicle categories of the brand: excavators, compact loaders, wheel loaders, motor graders, dozers and backhoe loaders.

VOLVO CE

Extension of wiring diagrams in the following vehicle categories: articulated haulers, excavators, wheel loaders and pipelayers.

System Display

System Display in the transmission system of the **CATERPILLAR CE** wheel loaders.

