



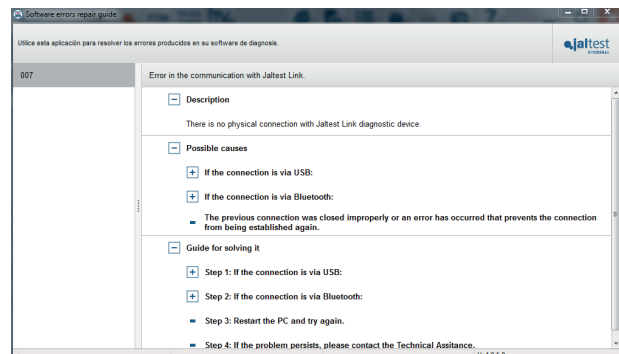
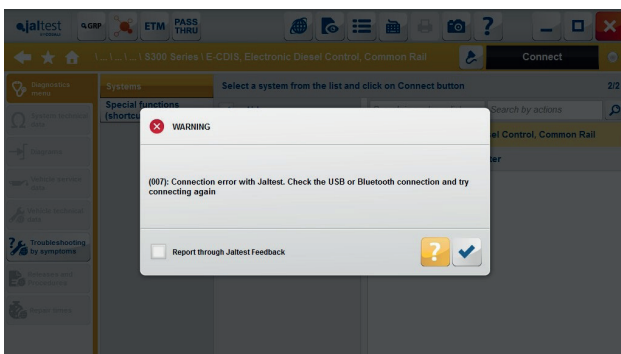
INNOVATIONS 19.1



SOFTWARE INNOVATIONS

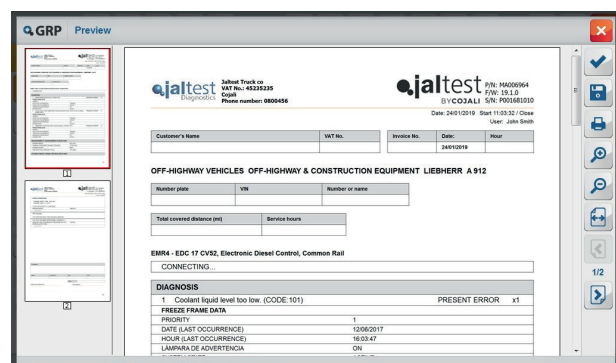
Troubleshooting guides for Software error codes

These guides contain information about the software errors 004, 006, 007, 0022, etc. The description of the error, the possible causes and a step-by-step guide to solve them have been added.



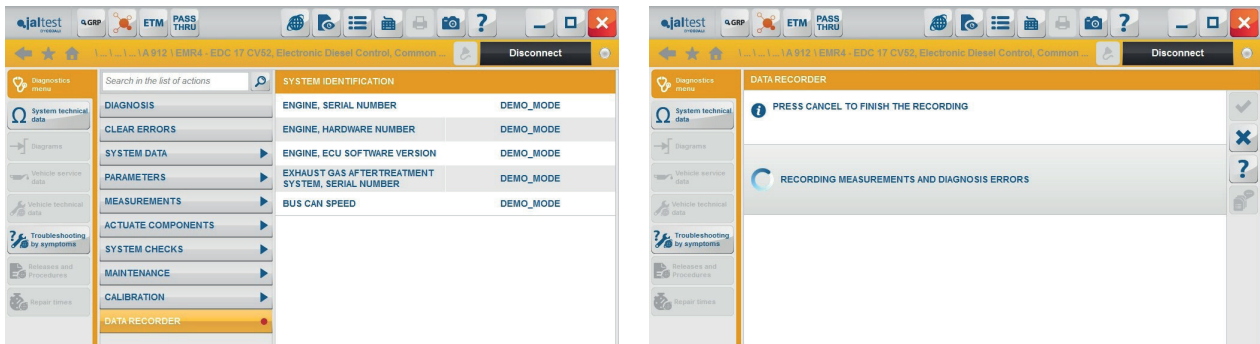
New viewer for PDF reports

The new PDF display format of the diagnosis reports replaces and improves the previous page-by-page display format.

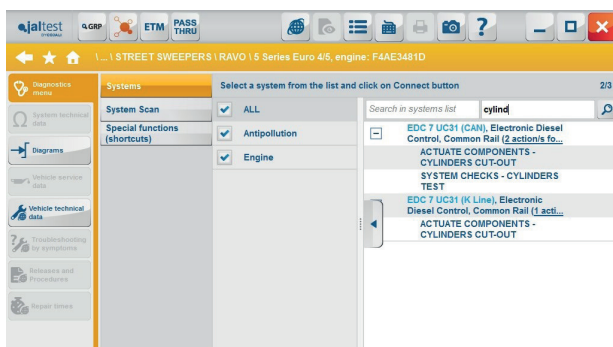


Data recorder and player

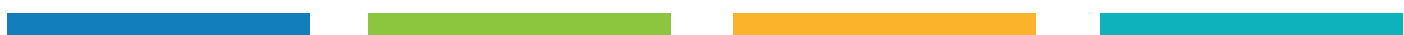
This function allows obtaining the diagnosis results (system errors) and the values of up to 24 measurements at most for 30 minutes continuously. The data recorder and player is ideal to evaluate dynamic errors.



Action search function by model



This new filter facilitates the action search by model without connecting in the system.



NEW DIAGNOSIS FUNCTIONS AND SYSTEMS

Take into account that this document is only a summary of the most relevant information of this new version. For further information, please visit Jaltest Report.

OHV AND CONSTRUCTION VEHICLES

It should be noted that the technical information has been extended in all models with [ZF Ergopower EST-37 transmissions \(WG110-WG311 transmissions\)](#), with wiring diagram configurations. Their coverage has also been increased with new actuations and checks for all the models of the project.

BOBCAT

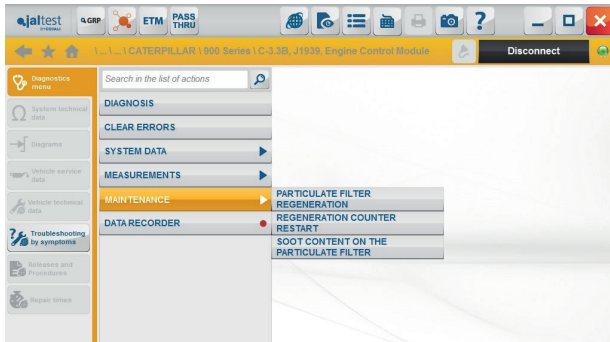
Restructuring of the brand.

⊕ New connector JDC 539A.

CASE CE

Wiring diagram configurations for ZF Ergopower transmissions. It is worth noting that the coverage of the [ZF Ergopower EST-37 system \(WG110-WG311 transmissions\)](#) has been increased with new actuations and checks for all the models of the project.

CATERPILLAR



+ New exhaust gases treatment system **ARD** (Aftertreatment Regeneration Device).

+ New SAE J1939 engine management systems, engines **C-3.3B**, **C-3.8** and **C-15**, which include advanced diagnosis.

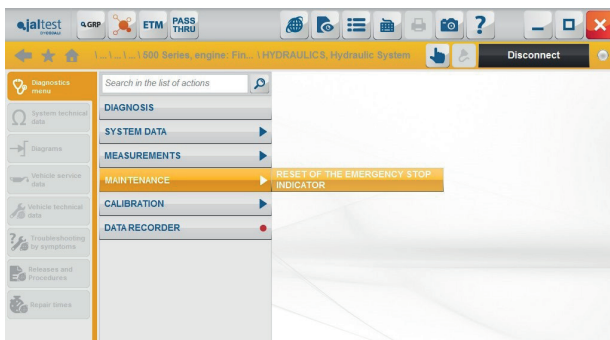
HIDROMEK

+ New brand available in Jaltest, which includes 11 models.

HITACHI

+ New **MON Monitor** Controller for **Series 5 and 6** excavators.

JCB



The manual diagnosis has been extended for the **500 Series** model (Tier 3 /Stage IIIA).

+ New systems in compact excavators.

Reset of the emergency stop indicator and calibration of the boom angle sensor for the hydraulic system in telescopic handlers.

JLG

+ New brand available in Jaltest, which includes 11 models.

JOHN DEERE

+ New systems in bulldozers and wheel loaders. The **TCU transmission** system can be highlighted. It includes advanced diagnosis functionalities, such as the clutch calibration.

Wiring diagram configurations for the engine management system and hydraulic systems in **K Series** models.

KRAMER

Restructuring of the brand, 12 new models.

MANITOU

Restructuring of the brand, 11 new models.

- + New **LSL1 and LSL2 hydraulic systems**, with technical releases and procedures to check and calibrate the load limitation of the telescopic arm.

YANMAR

- + New brand.
- + New connector JDC 538A.

VOLVO CE

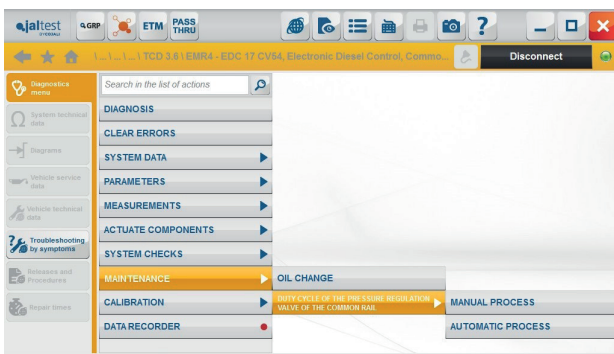
Restructuring of the brand, which includes 18 families and 45 models.

- + New **MECU** system, which includes the calibration of the transmission in articulated haulers.

Hydraulic systems in excavators, new checks and actuations.

STATIONARY ENGINES

DEUTZ



EMR4 engine management systems, service regeneration for CRT models in the EDC 17 CV52 system; injector coding, reset of the rail pressure regulation valve and much more in the EDC 17 CV54 system.

HINO

- + New brand available in stationary engines, with advanced diagnosis, wiring diagrams, troubleshooting guides, etc.

VM MOTORI

EDC VM R754TE4/ISE4 engine management system, actuators, checks, parameter settings, particulate filter regeneration, etc. This system is included in multiple STREET SWEEPER models.

VOLVO PENTA

Wiring diagram configurations for engine management systems with V2 technology.

STREET SWEEPERS

HAKO

⊕ New brand.

JOHNSTON

⊕ New brand.

