



 **jaltest**  
**MHE**  
M A T E R I A L   H A N D L I N G

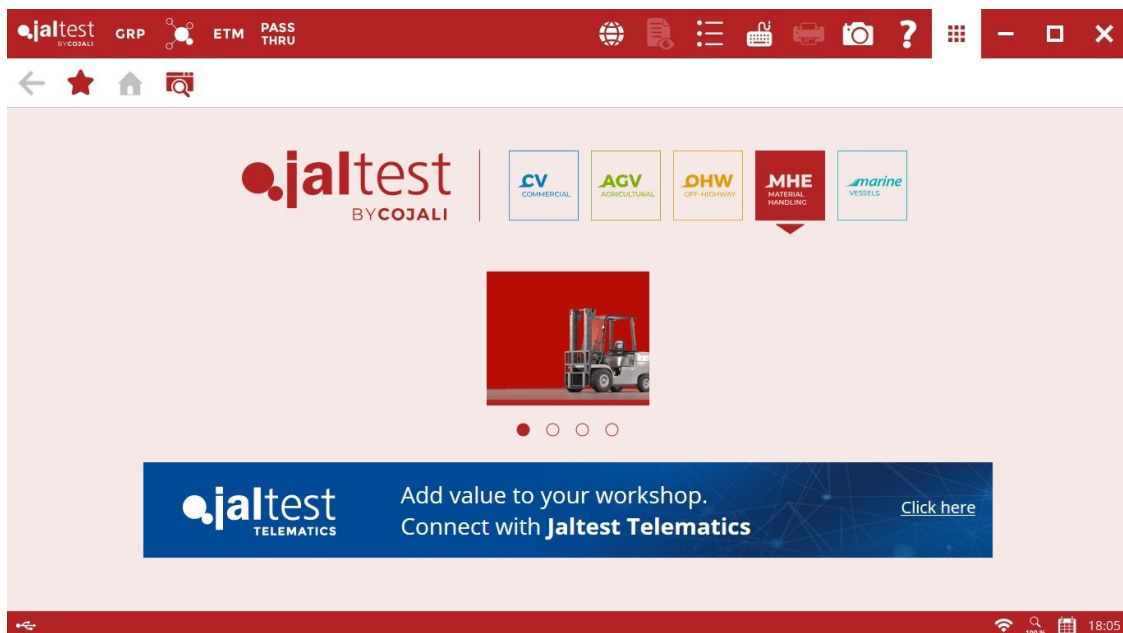
# INNOVATIONS 21.2

# SOFTWARE INNOVATIONS

The new software version **Jaltest 21.2** once again offers more improvements and innovations that consolidate this tool as a benchmark in **multibrand diagnosis** for commercial, agricultural and OHW (Off-Highway) vehicles, and vessels.

In this version, Jaltest changes its start window display by adding accesses to licence modules independently. Vehicles types from different groups cannot be mixed in the main window. Moreover, Jaltest includes a new module called **MHE** with coverage in material handling equipment: forklifts, boom lifts, scissor lifts, telescopic handlers, etc. and it can be purchased independently or as complement to **AGV** and/or **OHW**.

Jaltest keeps in memory the access of the last session for the next application restart.



**Jaltest ADS** advertising with available banners:

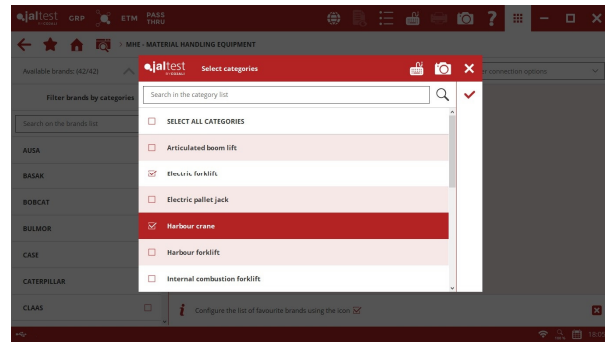
- **Jaltest Tools** with access to the catalogue of COJALI website.
- **Jaltest University** with access to this section of Jaltest website.
- **Jaltest Telematics** with access to the promotional video of predictive maintenance.

Banners change automatically and appear in any selected group **CV**, **AGV**, **OHW**, **MHE** or **MARINE**.

## Filter by vehicle category

All categories of vehicles and implements have been completed. This allows the display of brands according to the selected category.

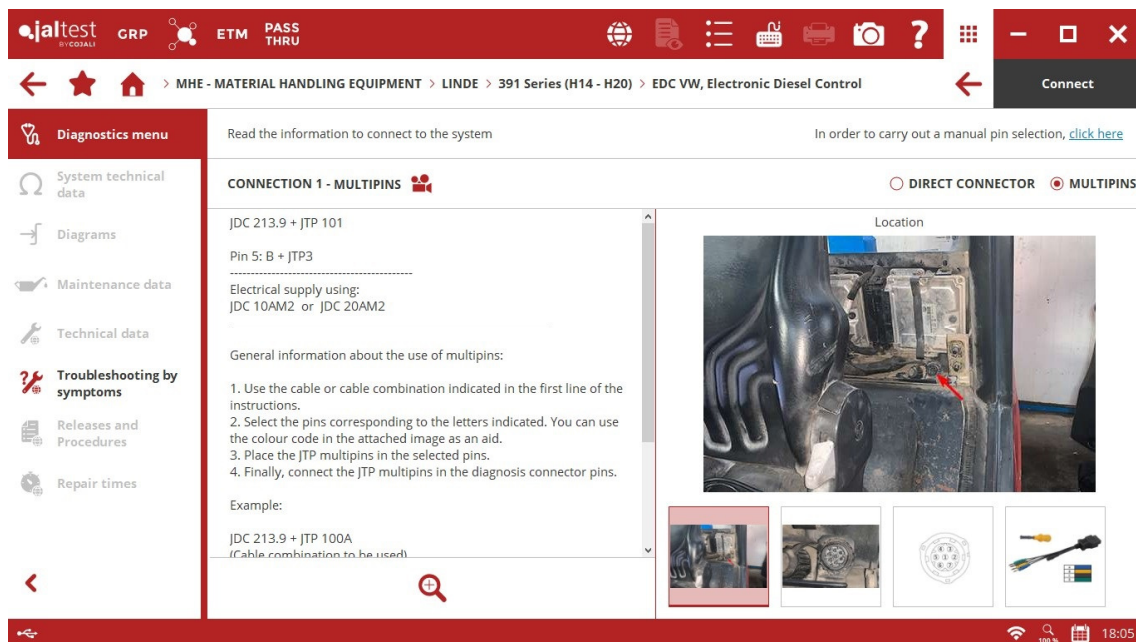
This does not mean that the brands configured as favourites are modified.



## Jaltest videos

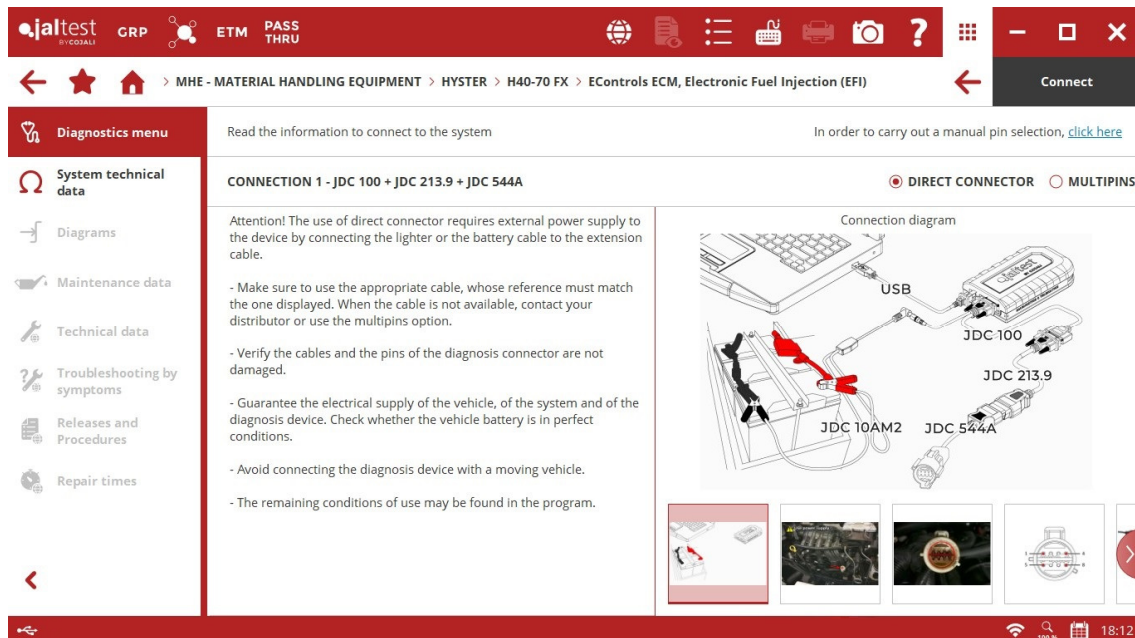
Updated Jaltest video menu with videos organised by categories. In addition, some of them have been related as procedure in the corresponding paths and models.

They can also be related to software functionalities, for example, in this version there is a video showing the use of multipins in all connections.



## Moving image, connection instructions

Moving images have been included for complex Jaltest Link V9 connections in which the JDC 100 cable and external power supply must be used. Moving images for all connections of Jaltest coverage will be included the next version.

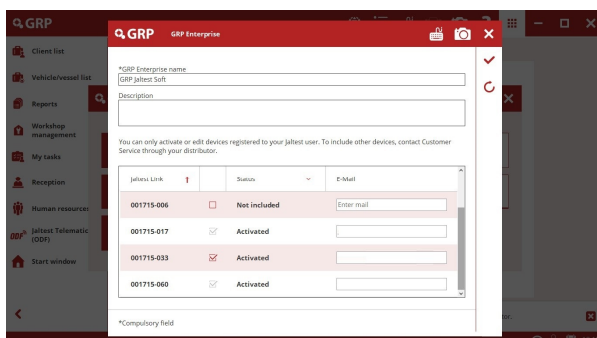


## Other innovations

- Text search in troubleshooting guides and procedures.
- Full-screen display of troubleshooting guides and procedures.

## GRP

### GRP Enterprise management from Jaltest

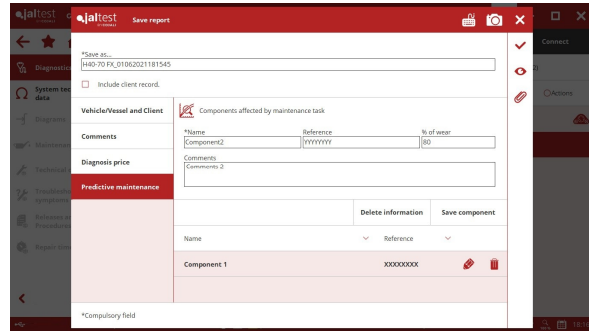
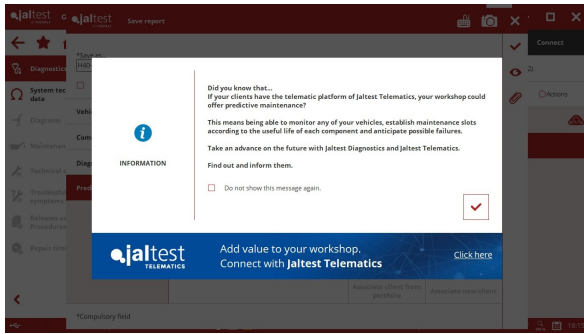


All devices registered in the same Jaltest user can create and manage GRP Enterprise directly from Jaltest.

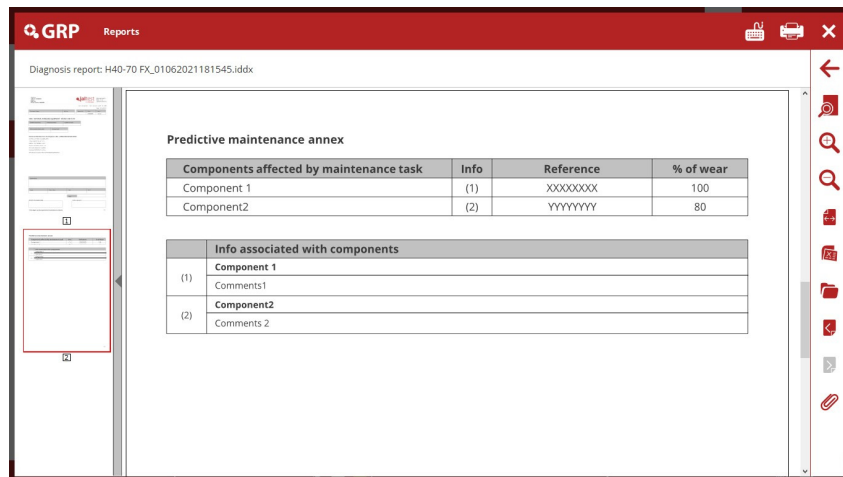
Available for Administrator users only.

## New “Predictive Maintenance” tab in reports

It is possible to include the components affected by the repair or maintenance task in reports, which are listed by name and reference. Also, it is possible to include a comment and the wearing percentage. If this new tab is filled in, it contributes to Jaltest predictive maintenance and Jaltest Telematics is advertised.



The diagnosis and/or maintenance report has all the information in an Annex.



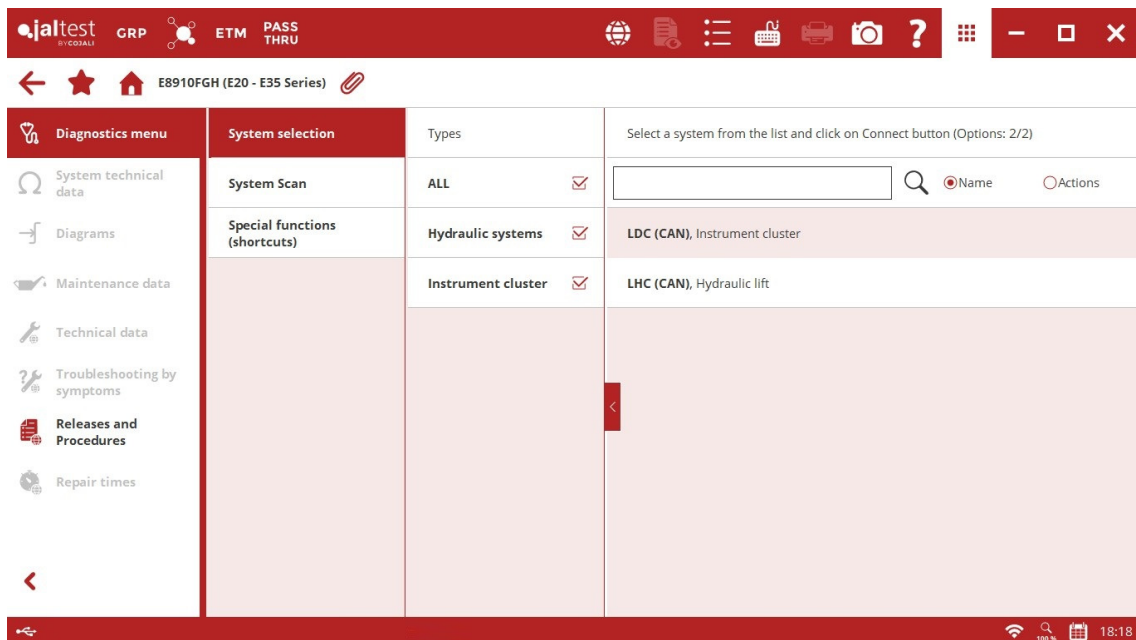
## Other innovations

- Files in maintenance reports can be attached (All GRP levels).
- Multiple clients and vehicles can be selected for the next functions:

Deletion  
Export

Also, the forms have more columns and new filters.

- The GRP form printing is improved.
- The vehicle documentation is available from the diagnosis menu.



# COVERAGE

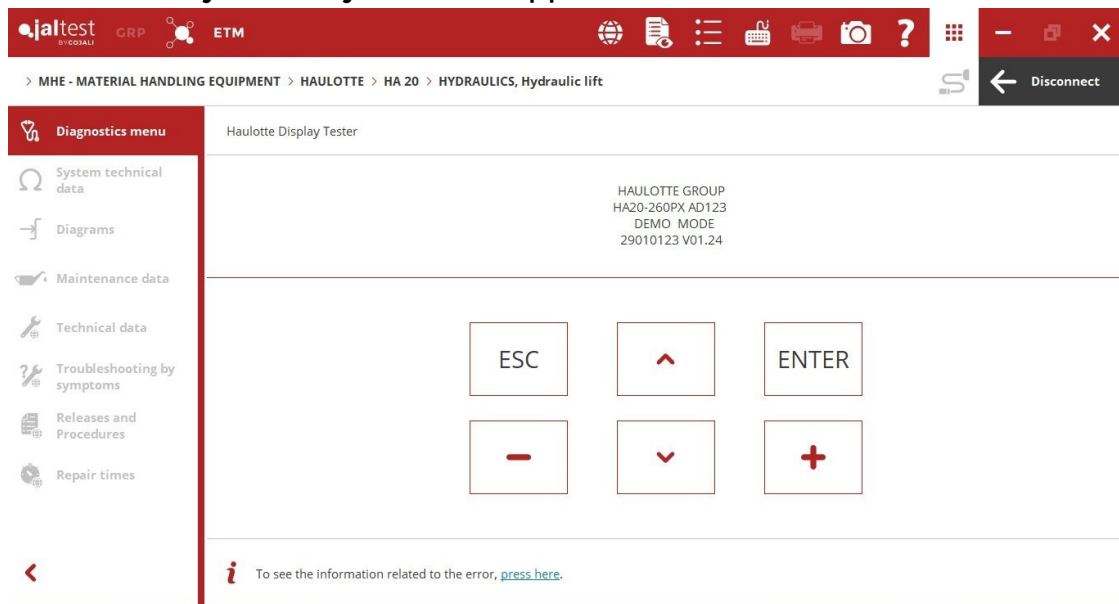
Take into account that this document is only a summary of the most relevant information of this new version. For further information, please visit Jaltest Report.

## CATERPILLAR

Models with **C-4.4/C-6.6** engines that communicate through SAE J1939 protocol, injection rail pressure check, cooling system check, high-pressure pump calibration, etc.

## HAULOTTE

⊕ **HYDRAULICS** hydraulic system that applies to all brand models.



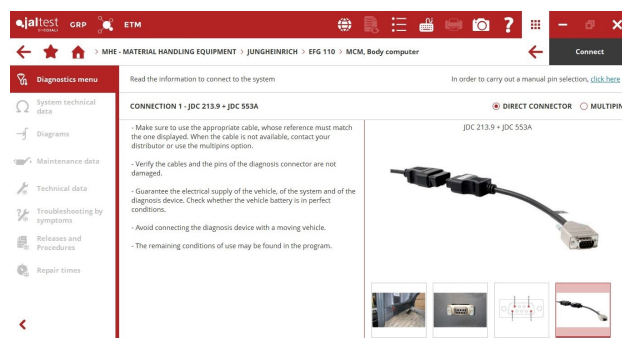
## JCB

**SCR** exhaust gas treatment system, catalytic converter regeneration.

## JUNGHEINRICH

⊕ **MCM** central computer for electric models.

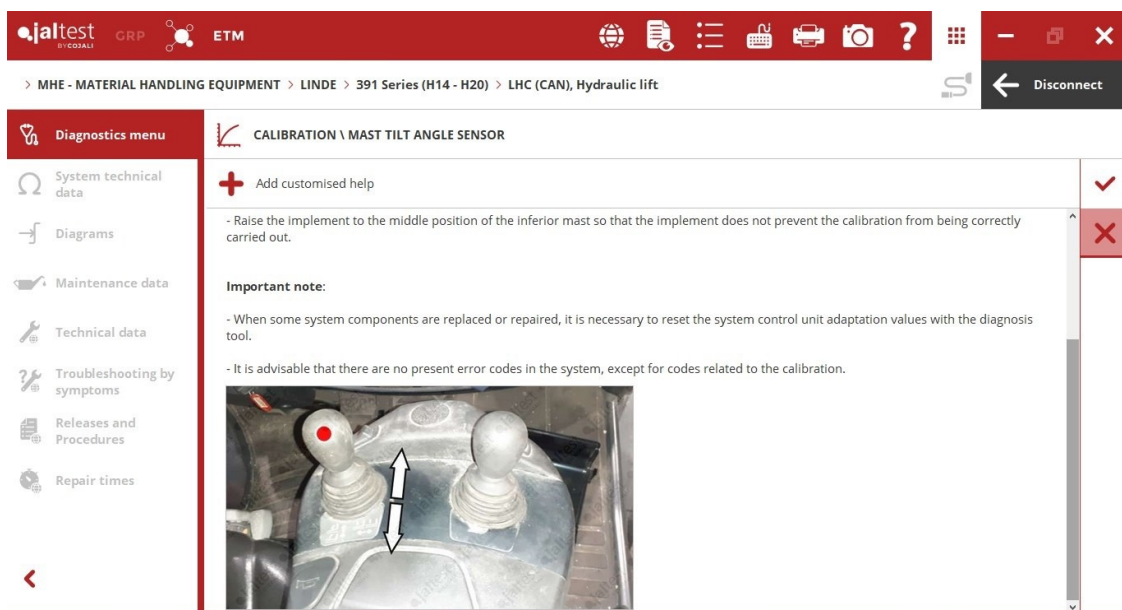
⊕ New **JDC 553A** cable.



## VOLVO CE

- ⊕ New **JDC 554A** cable.
- ⊕ **LTC** traction control system.
- ⊕ **LHC** hydraulic system (K Line).
- ⊕ **LPF** particulate filter control system.

**LHC** (CAN) hydraulic system, measurements, mast tilt angle sensor calibration and control lever calibration.



## LIUGONG

New brand with 4 models.

## MANITOU

⊕ **MC5R** system for telescopic handlers with basic diagnostic functions and also with maintenance reset or calibrations such as overload limit calibration and boom angle sensor calibration.