



INNOVATIONS 19.2



SOFTWARE INNOVATIONS

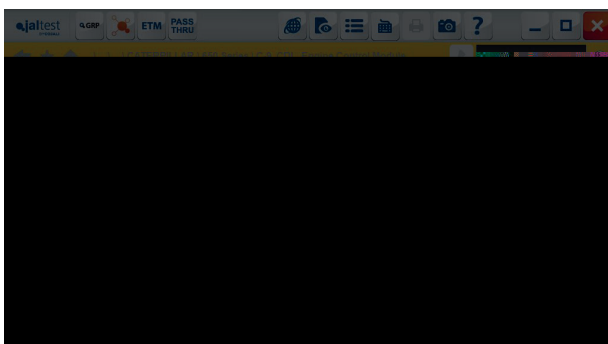
Update of the errors memorised during the System Scan process



Software improvement based on the update of the System Scan results. If the status of the error memory of a system changes after accessing and repeating the reading process or clearing the errors, the System Scan results are updated. This way, for example, the report can be repeated with a more precise information about the vehicle status.

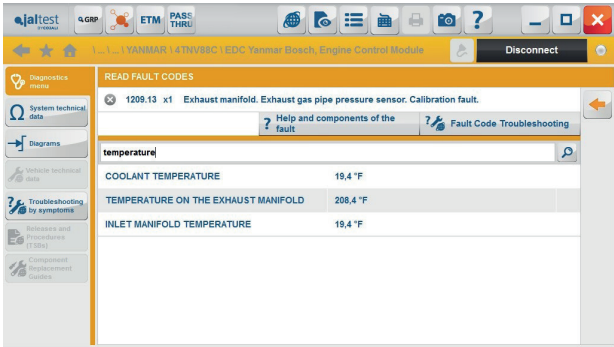
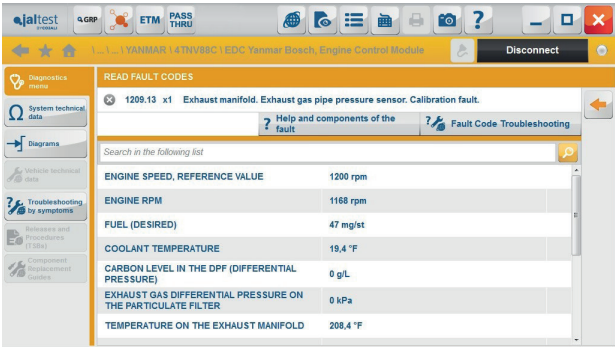
Export of tables to Excel files

Export the data shown on table-type diagnosis action steps to Excel files (*.xlsx).



OFF-HIGHWAY VEHICLES / OFF-HIGHWAY & CONSTRUCTION EQUIPMENT / CATERPILLAR 950 Series C & CXL Engine Control Module							
SYSTEM DATA / HISTOGRAMS / TOTAL DATA (ENGINE SPEED) / LOAD FACTOR							
ENGINE SPEED / ENGINE LOAD							
RANGE (rpm)	RANGE (%)	ENGINE SPEED 1	ENGINE SPEED 2	ENGINE SPEED 3	ENGINE SPEED 4	ENGINE SPEED 5	ENGINE SPEED 6
< 30	< 1100	1100 - 1300	1300 - 1500	1500 - 1700	1700 - 1900	1900 - 2100	
ENGINE LOAD 1	< 30	0.00/00	0.00/00	0.00/00	0.00/00	0.00/00	0.00/00
ENGINE LOAD 2	30 - 60	0.00/00	0.00/00	0.00/00	0.00/00	0.00/00	0.00/00
ENGINE LOAD 3	60 - 70	0.00/00	0.00/00	0.00/00	0.00/00	0.00/00	0.00/00
ENGINE LOAD 4	70 - 80	0.00/00	0.00/00	0.00/00	0.00/00	0.00/00	0.00/00
ENGINE LOAD 5	80 - 90	0.00/00	0.00/00	0.00/00	0.00/00	0.00/00	0.00/00
ENGINE LOAD 6	> 90	0.00/00	0.00/00	0.00/00	0.00/00	0.00/00	0.00/00

New search filter for Freeze Frame Data (FFD)



NEW DIAGNOSIS AND SYSTEM FUNCTIONALITIES

Take into account that this document is only a summary of the most important information of this new version. For more information, please visit Jaltest Report.

OFF-HIGHWAY AND CONSTRUCTION EQUIPMENT

BOBCAT

- + New systems: [AUX](#) auxiliary controller, [LHP](#) panel and [SJC](#) joystick controller among others. These systems include wiring diagram configurations.

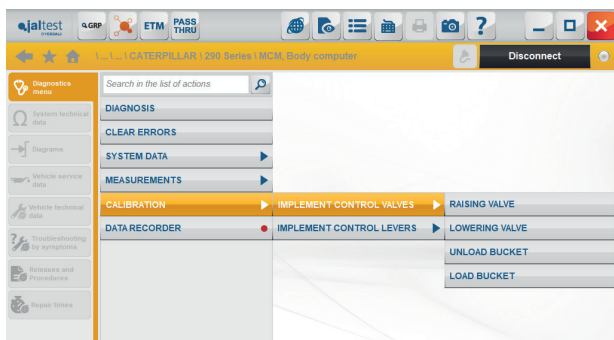
Functionalities in the Gateway Controller system where the actuator calibration can be performed.

BOSCH-REXROTH



- + New Bosch Rexroth [BODAS RC Series](#) system ([protocolo RS232](#)).

CATERPILLAR

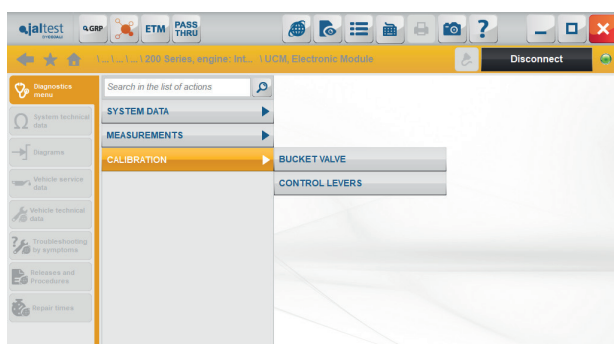


+ New Caterpillar Machine Control Module [200 Series] system, which includes the calibration of the bucket and the control levers.

Powertrain Subgeneric (Track Type Tractor) Powertrain Controller, transmission calibration, calibration of the FNR gear shift lever sensor and calibration of the steering control joystick.

C-4.4 & C6.6 engine management systems, recovery process of the exhaust gas treatment system.

CNH (CASE CE & NEW HOLLAND)

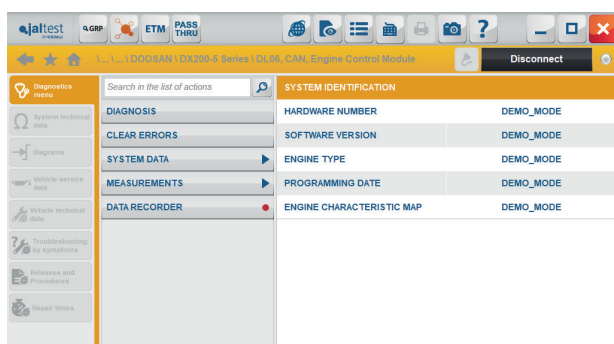


Calibration of the levers and the implement control valves in the UCM system.

+ New systems: CU central unit and EHC hydraulic system.

+ Wiring diagram configurations in systems such as EDC 17 C49 in FPT Tier 4 engines.

DOOSAN



+ New EDC DL06 (EDC 17 CV41) system.

HIDROMEK



HITACHI

- + Wiring diagram configurations for **Isuzu 4JJ1-TC**, **4HK1-TC** and **6UZ1-TC.6** engines.

JCB

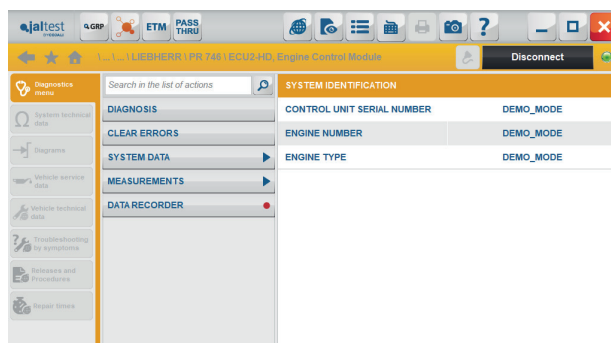
- + New systems: **Powershift** hydrostatic transmission and the **HECU** hydraulic system in which the overload limit can be calibrated.

JOHN DEERE CE

- + New systems developed for backhoe loaders: **TCU** transmission, **VCU** vehicle control unit and the **PDU** main display.

LIEBHERR

- + New **ECU2-HD & UEC3** engine management systems (Universal Earthmoving Computer 3).

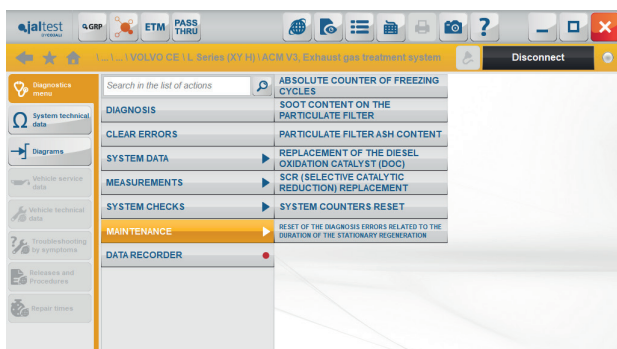


PERKINS



+ New Perkins systems in SAE J1939 for 1204E, 1204F, 1206E y 1206F engines.

VOLVO CE



ACM exhaust gases treatment system in vehicles with engines of V3 technology, advanced functions such as the system counter reset or the catalytic converter replacement, among others.

Calibration of the boom position sensor in the GPMECU2 system.

STATIONARY ENGINES

CATERPILLAR

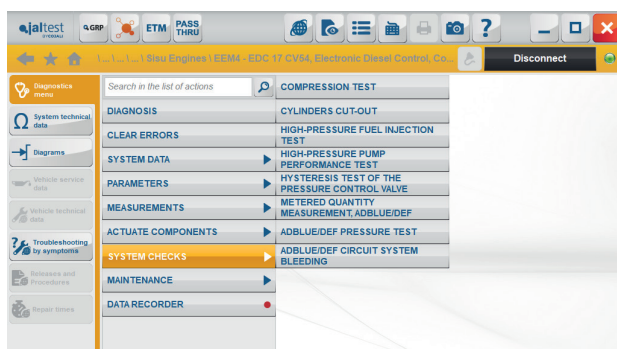
+ New C-32 CDL engine management system.

C-3.3B & C-3.8 engine management systems, injector coding.

DEUTZ

EMR4, EDC 17 CV52, engine management system, checks relating to the AdBlue/ DEF exhaust gases treatment system.

SISU



EEM4 / EEM4F (EDC 17) engine management system, new activations, checks and injector coding for 6-cylinder blocks.

YANMAR

Cylinder cut-out and activations of the engine throttle valve and the EGR exhaust gas control valve in the Yanmar [Denso](#) engine management system.

- + Wiring diagram configurations in Yanmar [Bosch](#) and [Denso](#) engine management systems.

VOLVO PENTA

EDC engine management system in vehicles with Volvo engines of [V2 technology](#), soot content reset, EGR valve calibration, etc.

STREET SWEEPERS

New functionalities of the [VM EDC R754/R756 system](#), among which the DPF diesel particulate filter regeneration and reset, components replacement functions such as the differential pressure sensor and the oil dilution reset, etc. can be highlighted.

This system is included in many models of street sweepers: Bucher CityCat 2020, Hako Citymaster 2200, Johnston C 200 or Mathieu-YNO Aquadyne Series.

