



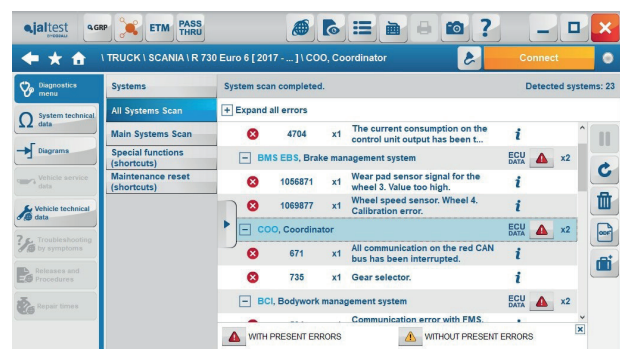
INNOVATIONS 19.2



SOFTWARE INNOVATIONS

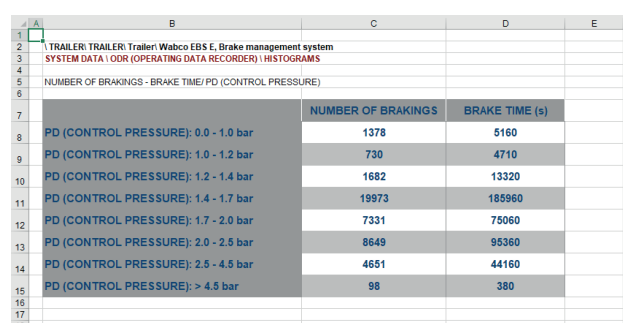
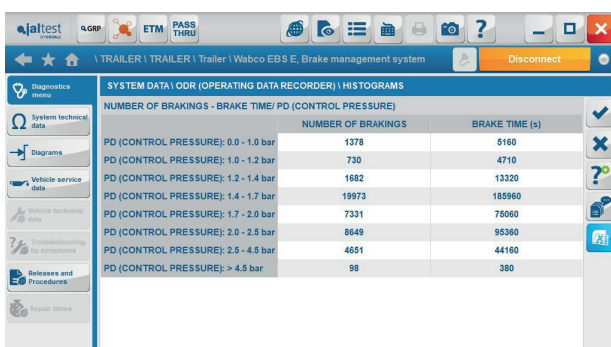
Update of the errors memorised during the System Scan process

Software improvement based on the update of the System Scan results. If the status of the error memory of a system changes after accessing and repeating the reading process or clearing the errors, the System Scan results are updated. This way, for example, the report can be repeated with a more precise information about the vehicle status.



Export of tables to Excel files

Export the data shown on table-type diagnosis action steps to Excel files (*.xlsx).



New search filter for Freeze Frame Data (FFD)

DIAGNOSIS

P0095 FMI:30 -- Intake Air Temperature Sensor 2 Circuit Range/Performance. Signal interruption.

Freeze Frame Data

Search in the following list

ERROR OCCURRENCE	127
SERVICE HOURS - FIRST OCCURRENCE	-14316561 h
TIME ELAPSED SINCE IGNITION - FIRST OCCURRENCE	13107 min
NUMBER OF START-UPS - FIRST OCCURRENCE	52428
INTERNAL ERROR CODE - FIRST OCCURRENCE	204
ENGINE RPM - FIRST OCCURRENCE	13107 rpm
SHUT-OFF TIME - FIRST OCCURRENCE	52 s

DIAGNOSIS

P0095 FMI:30 -- Intake Air Temperature Sensor 2 Circuit Range/Performance. Signal interruption.

Freeze Frame Data

TIME

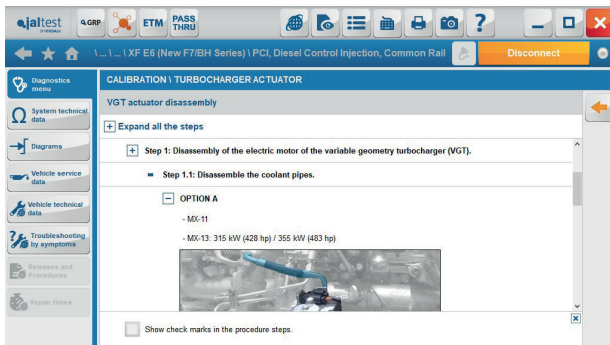
TIME ELAPSED SINCE IGNITION - FIRST OCCURRENCE	13107 min
SHUT-OFF TIME - FIRST OCCURRENCE	52 s
TIME ELAPSED SINCE IGNITION - LAST OCCURRENCE	16383 min
SHUT-OFF TIME - LAST OCCURRENCE	65 s

NEW DIAGNOSIS AND SYSTEM FUNCTIONALITIES

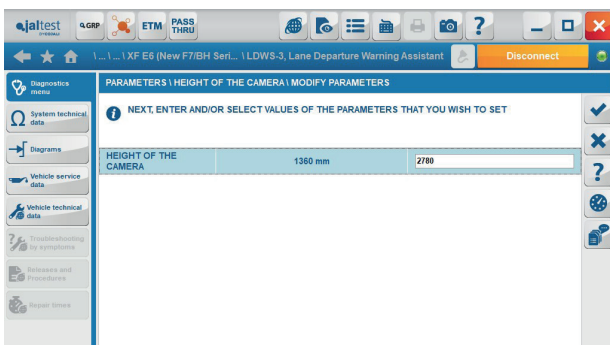
Take into account that this document is only a summary of the most important information of this new version. For more information, please visit Jaltest Report.

TRUCK AND BUS

DAF



For Euro 6 models, in the **PCI UDS** engine management system, there are new functions such as the injector coding, the compression test or the calibration of the VGT (Variable Geometry Turbine). In the **EAS4** (Exhaust Aftertreatment System), it is important to highlight the reset of the DPF (Diesel Particulate Filter), which is mandatory after replacing the component.

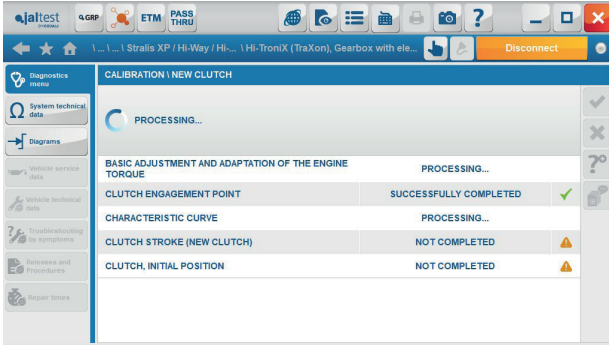


ADAS systems, LDWS-3 (Lane Departure Warning System), parameter setting of the camera height.

IVECO

Replacement of the air dryer filter for Euro 6 models, in the **VCM-STEP2** (Vehicle Control Module).

- + New **TPMS** (Tyre Pressure Monitoring System).



TraXon transmission system, calibration of the clutch when replacing it by a new or used one.

In addition, regarding the technical information of the vehicle, the procedure “*Distribution phasing*” has been added this version for **Cursor 13 CNG (F3H)** engines. The specific system functions keep also being associated to the maintenance data in all Euro 6 models of the main brands.

MAN

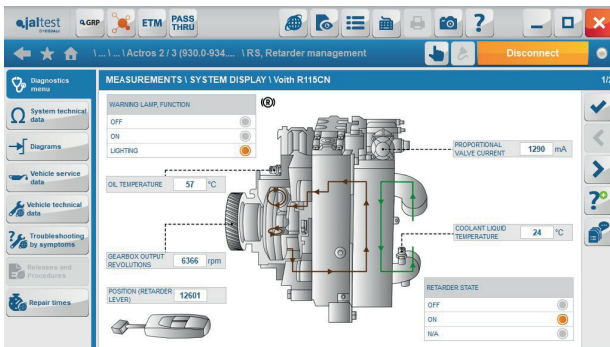
EDC 17 (Electronic Diesel Control), new resets after the component replacement and reset of the counters, highlighting the deletion of the code 4685 “too frequent regenerations of the DPF (Diesel Particulate Filter)”.



ADAS systems, in the lane detection warning system, calibration of the MFC (MultiFunction Camera) and frontal radar sensor (anti-collision system), radar calibration.

MERCEDES-BENZ

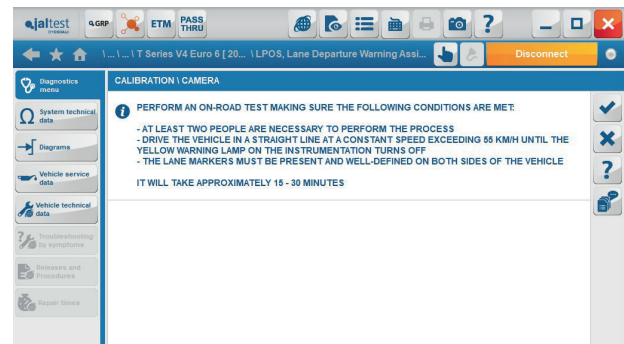
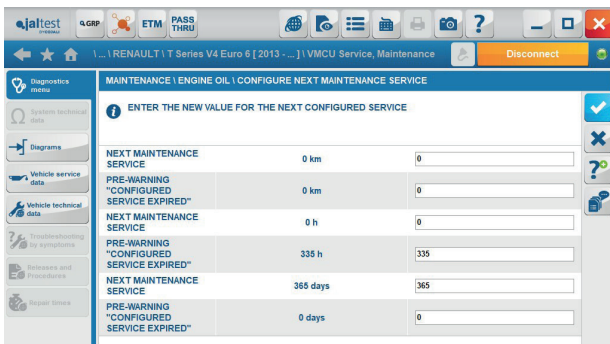
- + New TPM 02T (Tyre Pressure Monitoring) system.



System Display in Voith retarder.

RENAULT

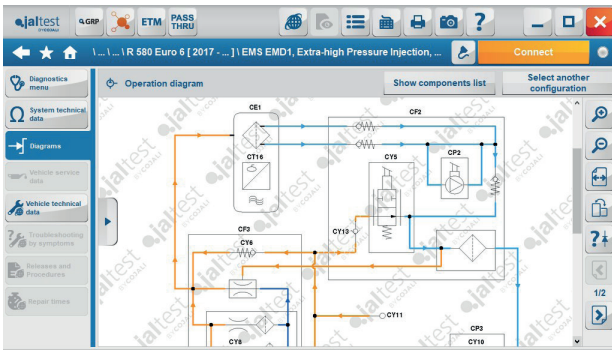
In vehicles with V4 technology, it is important to highlight the engine oil change maintenance operations (predictive or standard) in the **VMCU** (Vehicle Master Control Unit), and the calibration of the front camera of the **ADAS LPOS** system (Lane Position Object Sensor).



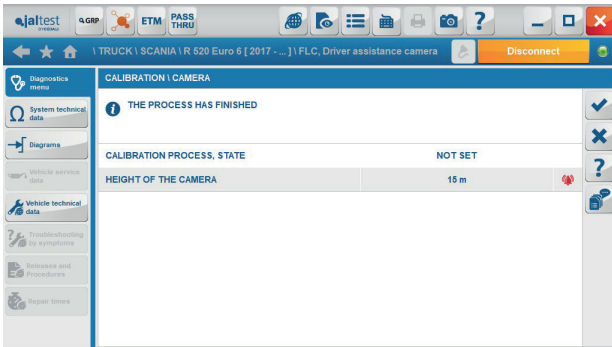
In addition, regarding the technical information of the vehicle, this version we have also added the procedure *“Valve adjustment with Optibrake engine brake”* in **DTI 11** engines.

In vehicles with DXi technology, new activations in the **Optidriver** transmission system have been added.

SCANIA

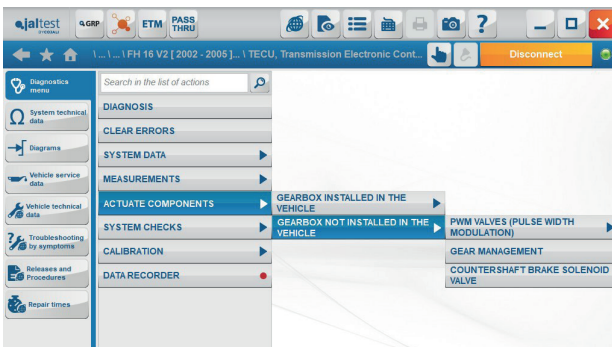


Euro 6 Models, operation data in the **EMD1** engine management system. In addition, we have added the operation diagram for 8-cylinder engines and the procedure to replace the DPF (Diesel Particulate Filter), which can be found in the vehicle technical data module.



ADAS systems, **FLC** (Forward Looking Camera), calibration of the front camera.

VOLVO



In vehicles with V2 technology, **I-Shift V2** transmission, calibration of gearboxes not installed in the vehicle, and new activations in the system.

In vehicles with V3 technology, control parameters for the engine protection.

In vehicles with V4 technology, calibration of the front camera of the **ADAS LPOS** system (Lane Position Object Sensor). In this version, we have also added maintenance services for the FH V4 and FM V4 models.

OTHER BRANDS AND MANUFACTURERS

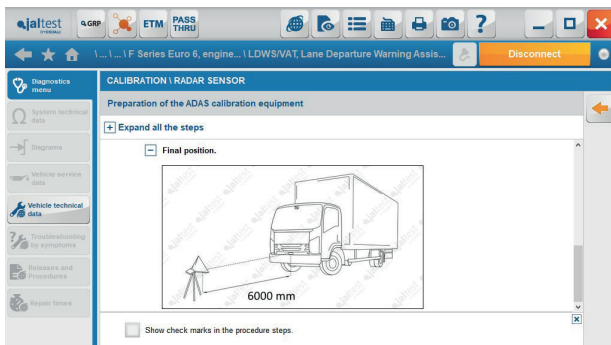
FORD

- + New instrumentation system in Cargo models.

HINO

Troubleshooting guides by symptoms, wiring diagrams, etc. in engines from the brand in which the operation data and trip data reset have also been developed.

ISUZU



- + New **ADAS VAT** system (View Assist Technology), which includes camera and radar calibration, as well as the configuration of the system parameters.

Modification of the VIN chassis number in **4JJI-TC & 4HKI-TC** engines.

MITSUBISHI-FUSO

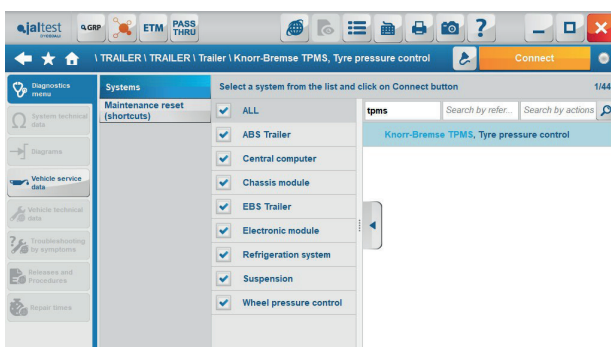
- + Systems of the new **Fuso Canter ECO Hybrid model**, BCU (Battery Control Unit) and EMCM (Electric Motor Control Module).

ACM (Aftertreatment Control Module), new maintenances and check of the AdBlue/DEF quality.

TRAILER

KNORR-BREMSE

Trailer **TEBS Gen 2**, new variants of the G2.2 Standard, Standard Plus and Premium system.



- + New **TPMS** (Tyre Pressure Monitoring System).

WABCO

Trailer **EBS E via CAN** and **ELEX system**, new E5.5 variant.

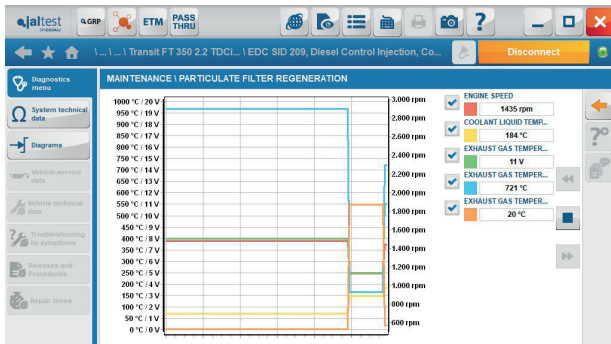
LIGHT VEHICLES

FIAT

In Fiat Ducato models, reset of the PDF in the [EDC 17 CP52](#) system (also in PEUGEOT and CITROËN).

[Maintenance 2.0](#), reset of the engine oil life.

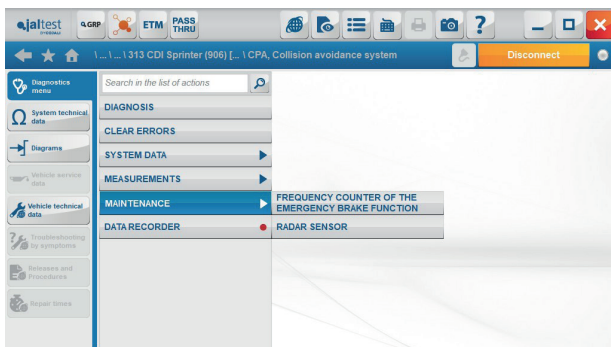
FORD



+ New Ford Transit systems, [ESP9.0](#) brake control system and [SID 209](#) engine management system, which includes the regeneration and reset of the DPF (Diesel Particulate Filter).

MERCEDES

Purge of the [ESP 9](#) brake system in Vito and Metris models.



Reset of the brake function frequency counter in the [ADAS CPA](#) system (Collision Prevention Assist).

OPEL

Reset of the adaptation values in the [EDC 17C11](#) system (Engine Diesel Control) in Opel Movano models.

RENAULT

+ New [SID 309](#) engine management system.

VOLKSWAGEN

[Maintenance 4.1](#), reset of the oil replacement (fixed intervals and flexible maintenance) in Crafter models.

Reset of the TPMS lamp (Tyre Pressure Monitoring System) in the [ESP MK100 UDS](#) system.