

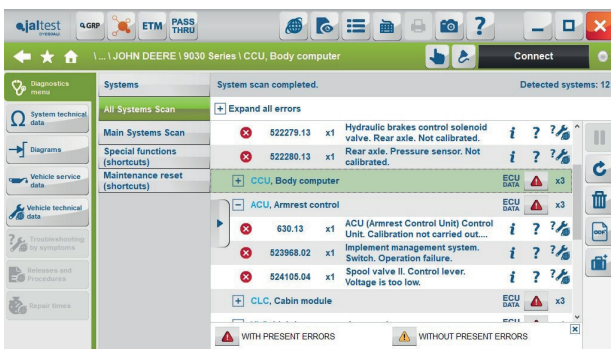


INNOVATIONS 19.2



SOFTWARE INNOVATIONS

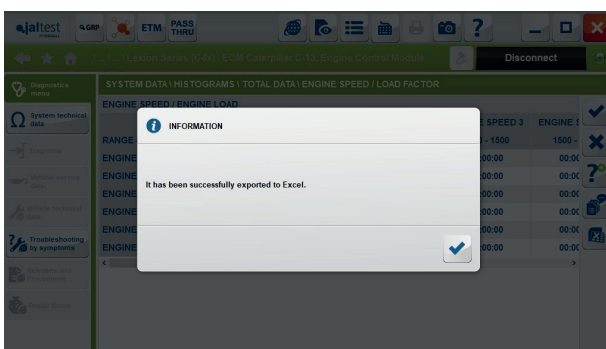
Update of the errors memorised during the System Scan process



Software improvement based on the update of the System Scan results. If the status of the error memory of a system changes after accessing and repeating the reading process or clearing the errors, the System Scan results are updated. This way, for example, the report can be repeated with a more precise information about the vehicle status.

Export of tables to Excel files

Export the data shown on table-type diagnosis action steps to Excel files (*.xlsx).



RANGE (%)	ENGINE SPEED 1	ENGINE SPEED 2	ENGINE SPEED 3	ENGINE SPEED 4	ENGINE SPEED 5	ENGINE SPEED 6
< 100	0.0000	0.0000	0.0000	0.0000	0.0000	0.0000
100 - 1500	0.0000	0.0000	0.0000	0.0000	0.0000	0.0000
1500 - 1500	0.0000	0.0000	0.0000	0.0000	0.0000	0.0000
1500 - 1700	0.0000	0.0000	0.0000	0.0000	0.0000	0.0000
1700 - 1900	0.0000	0.0000	0.0000	0.0000	0.0000	0.0000
1900 - 2100	0.0000	0.0000	0.0000	0.0000	0.0000	0.0000
> 95	0.0000	0.0000	0.0000	0.0000	0.0000	0.0000

New search filter for Freeze Frame Data (FFD)

The screenshot shows the diagnostic software interface with a search filter for "pressure" applied to the Freeze Frame Data (FFD) table. The table lists various parameters and their values:

Search in the following list	
ENGINE RPM	1657 rpm
ENGINE TORQUE	947.2 Nm
VEHICLE SPEED	0 km/h
ENGINE PERCENT LOAD	99.80 %
FUEL INJECTION QUANTITY	100.23 mg/H
FUEL PRESSURE (INJECTION RAIL)	1160.5 bar
BOOST PRESSURE	2.548 bar

The screenshot shows the diagnostic software interface with a search filter for "pressure" applied to the Freeze Frame Data (FFD) table. The table lists various parameters and their values:

pressure	
FUEL PRESSURE (INJECTION RAIL)	1160.5 bar
BOOST PRESSURE	2.548 bar
OIL PRESSURE	4.22 bar

NEW DIAGNOSIS AND SYSTEM FUNCTIONALITIES

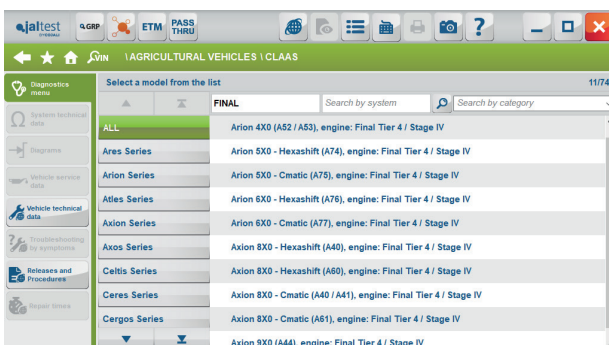
Take into account that this document is only a summary of the most important information of this new version. For more information, please visit [Jaltest Report](#).

CASE IH

- + New **Interim Tier4/Stage IIIB** models of compact tractors.

CLAAS

- + New **Final Tier 4/Stage IV** models.
- + New **Claas Xerion** models.



DEUTZ-FAHR

Increase of manual diagnosis codes for both the Display System Scan and the errors that appear in the instrument cluster.



New functionalities of the **Deutz EMR 4, EDC 17 CV52**, engine management system, among which the AdBlue/DEF dosing and the AdBlue/DEF pressure test relating to the exhaust gases treatment system can be highlighted.

DEUTZ-FAHR

- + New **FARMotion Interim Tier 4/Stage IIIB** engine management system in 5 D Series and 5 G Series models.

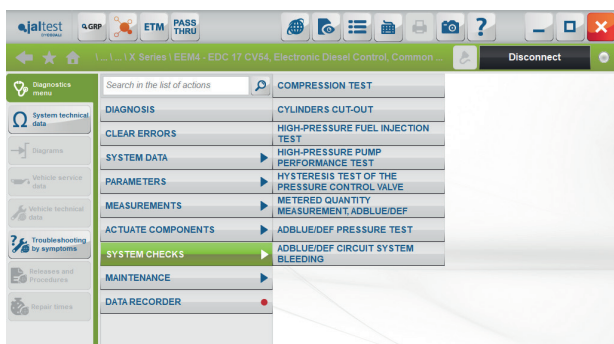
In addition, 38 engine types of the SDF group have been created. Same, Lamborghini and Hürlimann also belong to this group.

DIECI

- + New models of telescopic handlers.

FENDT

- + New **Fendt 200 Vario Series Interim Tier 4/Stage IIB** model of compact tractor.



New functionalities of the **Sisu Interim Tier 4/Stage IIIB & Final Tier 4/Stage IV** engine management system, among which the following can be highlighted: the injector coding for 6-cylinder blocks and checks such as the cylinder cut-out and checks of the exhaust gases treatment system; the AdBlue/DEF dosing and the AdBlue/DEF pressure test.

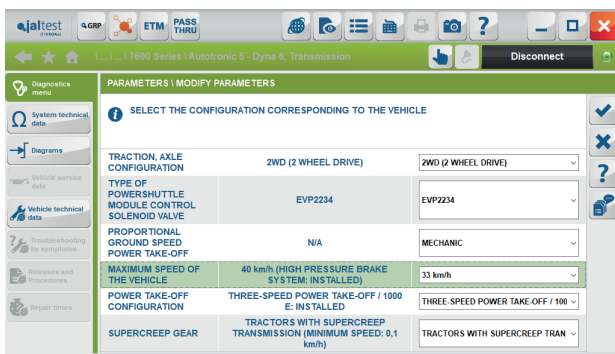
JOHN DEERE

New functionalities of hydraulic systems such as the parameter modification in the **HCC hydraulic lift** system of 7R & 8R Series models.

- + New control system of the **power take-off RPT**, which includes advanced functions in 7R, 8R & 9R Series models.

MASSEY FERGUSON

- + New 7700 S Series model of tractor.



Parameter modification such as the maximum speed of the vehicle in the [Autotronic 5-Dyna 6](#) transmission in X400, X600 & X700 Series models.

- + New [Sauer Danfos hydraulic system](#), which includes the parameter setting of the spool valves identification code in X700 Series models.

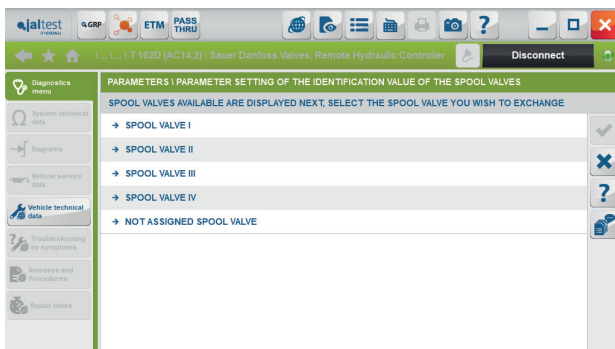
NEW HOLLAND

- + New [Interim Tier4/Stage IIIB](#) models of compact tractors.

SCHÄFFER

- + New brand with Skid-steer loader models.

VALTRA



- + New [Sauer Danfos hydraulic system](#), which includes advanced functions such as the parameter setting of the spool valves identification code in **Tier 3/Stage III & Interim Tier4/Stage IIIB** models.

- + New [Bucher hydraulic system](#), which includes the parameter setting of the spool valves identification code in **Final Tier4/Stage IV**.

Hydraulic lift calibration in the [EHR](#) system in AC17.XX & AC2X.XX models.