



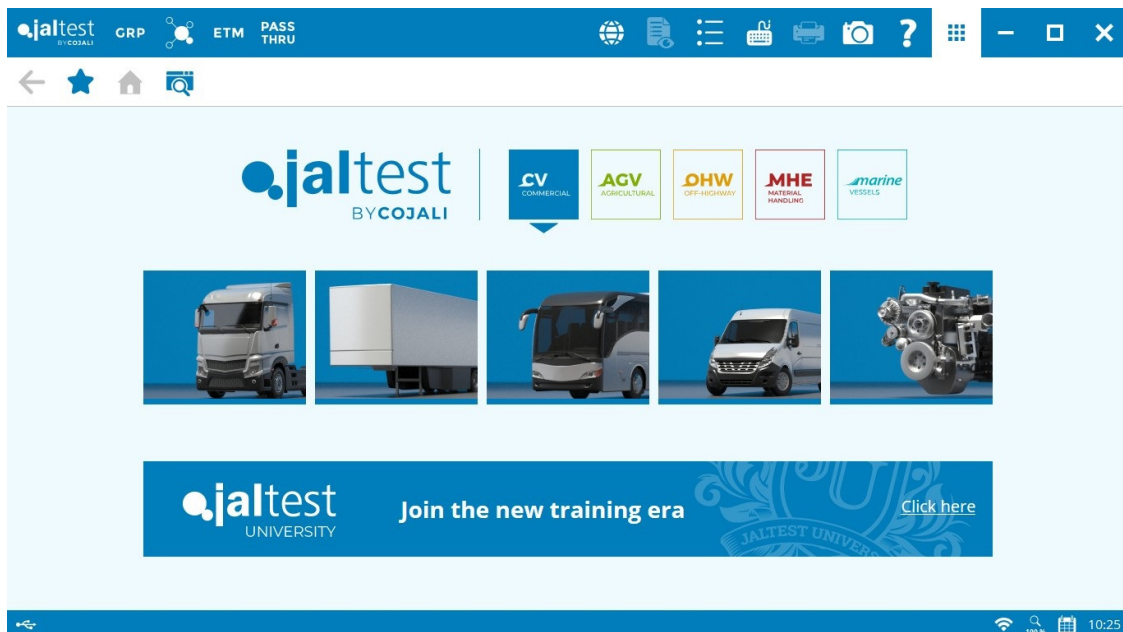
# INNOVATIONS 21.2

# SOFTWARE INNOVATIONS

The new software version **Jaltest 21.2** once again offers more improvements and innovations that consolidate this tool as a benchmark in **multibrand diagnosis** for commercial, agricultural and OHW (Off-Highway) vehicles, and vessels.

In this version, Jaltest changes its start window display by adding accesses to licence modules independently. Vehicles types from different groups cannot be mixed in the main window. Moreover, Jaltest includes a new module called **MHE** with coverage in material handling equipment: forklifts, boom lifts, scissor lifts, telescopic handlers, etc. and it can be purchased independently or as complement to **AGV** and/or **OHW**.

Jaltest keeps in memory the access of the last session for the next application restart.



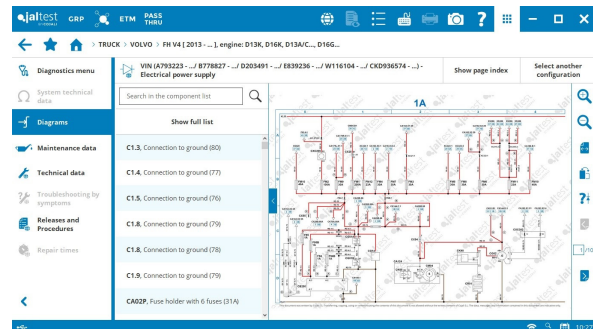
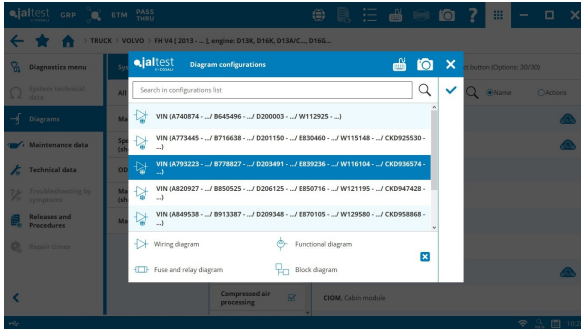
**Jaltest ADS** advertising with available banners:

- **Jaltest Tools** with access to the catalogue of COJALI website.
- **Jaltest University** with access to this section of Jaltest website.
- **Jaltest Telematics** with access to the promotional video of predictive maintenance.

Banners change automatically and appear in any selected group **CV**, **AGV**, **OHW**, **MHE** or **MARINE**.

## Model wiring diagrams

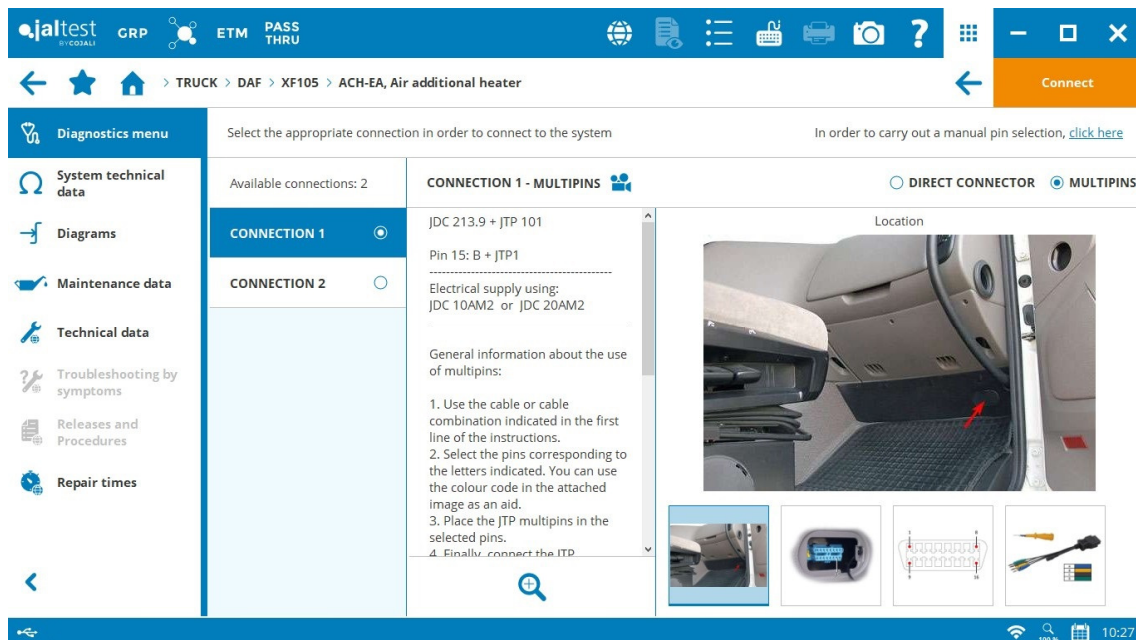
Promotional module of wiring diagrams organised by model with page index and component search. Only available in some brands.



## Jaltest videos

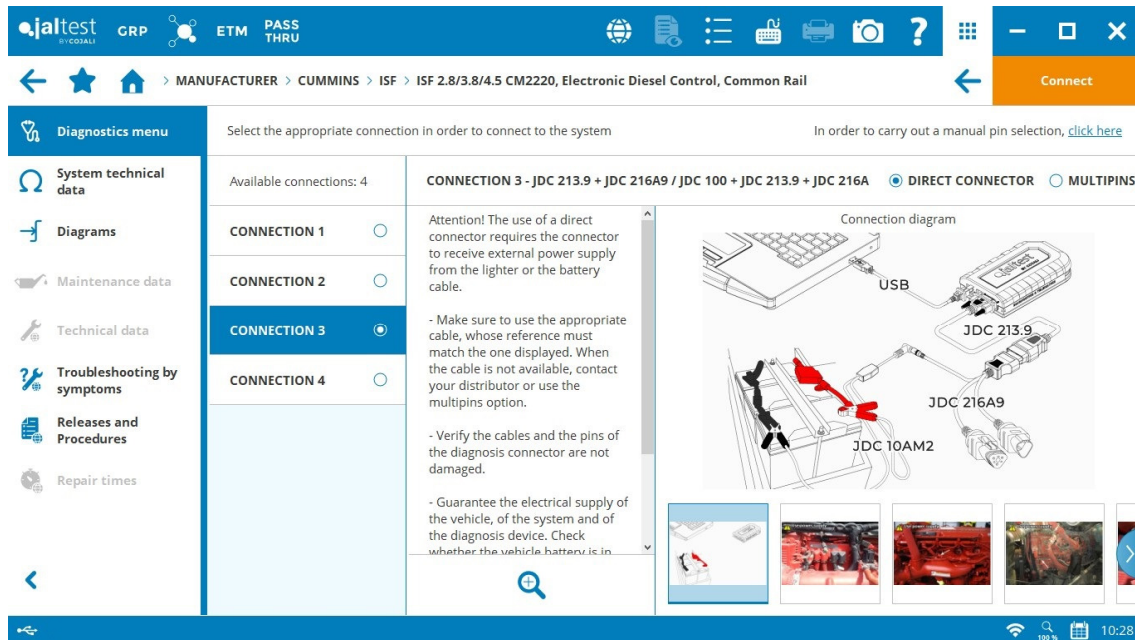
Updated Jalttest video menu with videos organised by categories. In addition, some of them have been related as procedure in the corresponding paths and models.

They can also be related to software functionalities, for example, in this version there is a video showing the use of multipins in all connections.



## Moving image, connection instructions

Moving images have been included for complex Jaltest Link V9 connections in which the JDC 100 cable and external power supply must be used. Moving images for all connections of Jaltest coverage will be included the next version.

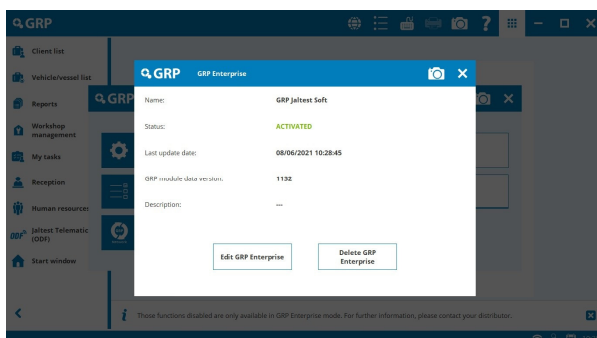


## Other innovations

- Text search in troubleshooting guides and procedures.
- Full-screen display of troubleshooting guides and procedures.

## GRP

### GRP Enterprise management from Jaltest

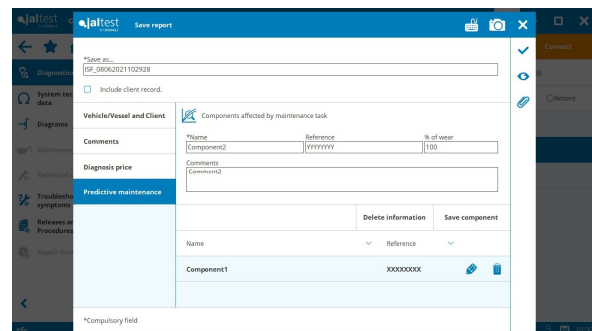
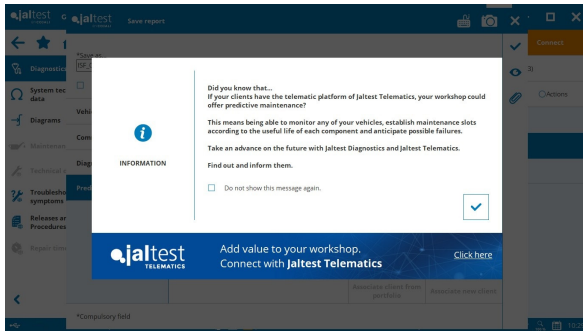


All devices registered in the same Jaltest user can create and manage GRP Enterprise directly from Jaltest.

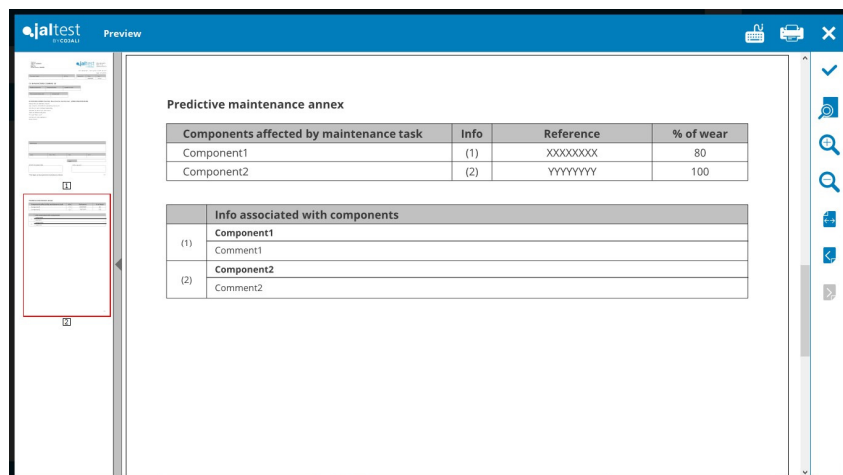
Available for Administrator users only.

## New “Predictive Maintenance” tab in reports

It is possible to include the components affected by the repair or maintenance task in reports, which are listed by name and reference. Also, it is possible to include a comment and the wearing percentage. If this new tab is filled in, it contributes to Jaltest predictive maintenance and Jaltest Telematics is advertised.



The diagnosis and/or maintenance report has all the information in an Annex.



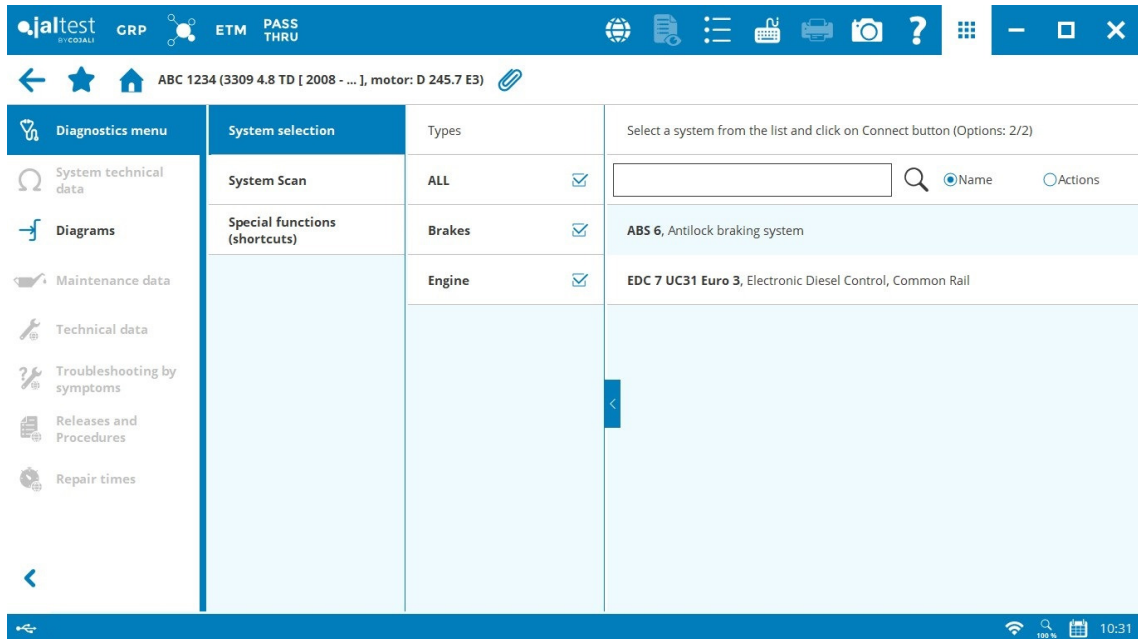
## Other innovations

- Files in maintenance reports can be attached (All GRP levels).
- Multiple clients and vehicles can be selected for the next functions:

Deletion  
Export

Also, the forms have more columns and new filters.

- The GRP form printing is improved.
- The vehicle documentation is available from the diagnosis menu.



## ETM

### Extended coverage:

Wabco 4th generation modules

480 106 004 0

480 106 201 0

It includes a new connection cable **MDC08**.

Knorr-Bremse 4th generation modules

K050211

K050214

K093190

K102265

K102311



# BRANDS AND MODELS

---

Take into account that this document is only a summary of the most relevant information of this new version. For further information, please visit Jaltest Report.

## CITROËN

Nemo 1.3 HDi [A9] with FHY/FHZ engine

## DACIA

New brand that includes **Dokker** models

## FIAT

Talento 2.0 [296] with M9R [2019 - ...] engine

Toro 2.0 with ECD engine

Fiorino '07 [225] 1.3 MultiJet with 199 B1.000 engine

Fiorino '07 [225] 1.3 MultiJet with 55283775, 330 A1.000 engine

Fullback [305] 2.4 with 4N15 engine

## ISUZU

N Series - ELF with 4HV1 engine

## IRIZAR

i4 Hybrid with Eaton gearbox

## IVECO

Acco Euro 6

S-Way Euro 6D [2019 - ...]

S-Way NP CNG/LNG Euro 6D [2019-...]

X-Way Euro 6D [2019-...]

## MERCEDES-BENZ

Econic 5 [2020 - ...]

Vito [447] 111 CDI with OM 622.951 engine

## mitsubishi

L 200 3.2 3.2 4x4 Triton with 4M41 engine



## MITSUBISHI FUSO

FI with 4d34i engine

## NISSAN

NV300 [X82] with M9R [2019 - ...] engine

## OPEL/VAUXHALL

Combo [E] 1.6 with B16DT [2018 - ...] engine

Combo [D] 1.3 with A13FD / LN9 engine

## PEUGEOT

Bipper [A9] 1.3 HDi with FHY / FHZ engine

## RENAULT

Trafic III with M9R. [2019 - ...] engine

Kangoo [FW/KW] 1.5 dCi with K9K 608 engine

## SCANIA

L Series Euro 6 family with diesel engine

P 340 Euro 6 [2017 - ...] with gas and diesel engine

S 590 Euro 6, S 770 Euro 6, ...

## TATRA

T.10 BS-VI

T.14 BS-VI

1918 BS-VI

712 BS-VI

1412 BS-VI

## TATRA

Phoenix E

## VOLKSWAGEN

Crafter 55 (SY, SZ) with 2.0 TDI (2018 - ...) engine

Multivan T6 [SH] 2.0 TDI with CXE / CXF / CXG / CXH engine

California T6.1 2.0 TDI with CXE / CXF / CXG / CXH engine

Caddy 1.6 TDI CAYD / CAYE [2015 - ...]



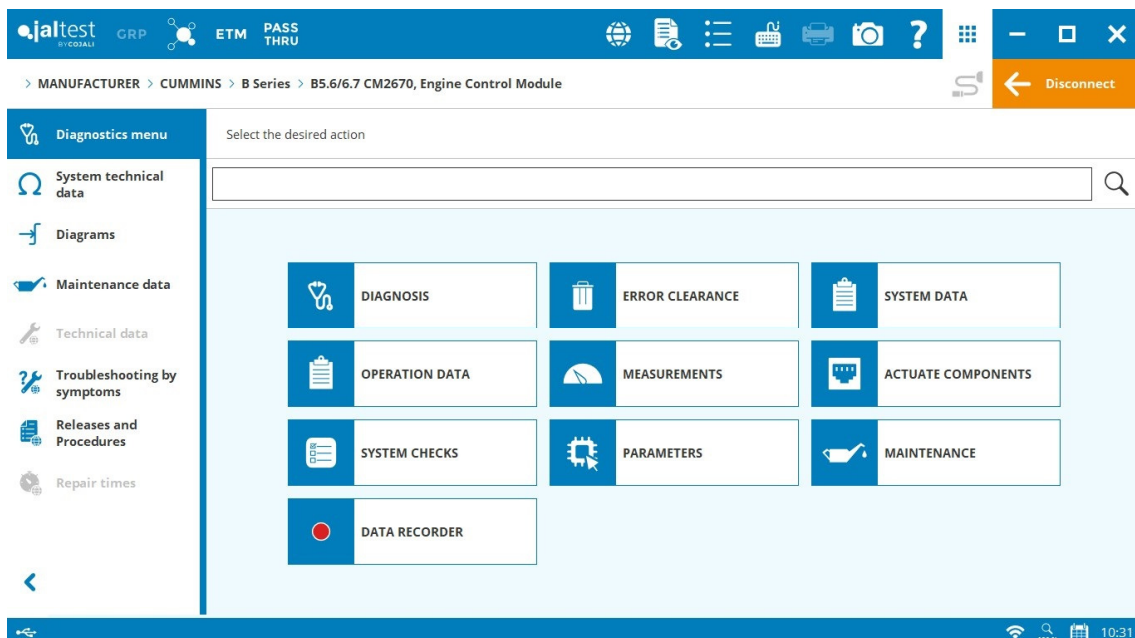
# DIAGNOSIS AND SYSTEMS

Take into account that this document is only a summary of the most relevant information of this new version. For further information, please visit Jaltest Report.

Overall, **technical information and troubleshooting guides** of the most common error codes in the workshop have been expanded thanks to the communication channels with clients such as the technical support offered by the project, training, Jaltest Feedback and “Product improvement” option.

We work each update to expand the **references and variants** of all systems increasing coverage and ensuring the reliability of the interactions with the vehicle systems. New references of supported control units in brands such as DAF, RENAULT, SCANIA, VOLVO, etc.

In systems that apply to several brands, such as **CUMMINS** systems, the speed limit modification has been developed in systems such as **L9N CM2380** in buses, as well as the coverage has been expanded with advanced functions of the **B6.7 CM2670** system. In **WABCO** brand systems, the development of 446 220 100 0 reference of the **IVTM** tyre pressure control system and the development of the control unit replacement (parameter copying and pasting) in the **EBS Euro Gen 3** brake system are worth noting.



## TRUCK and BUS

### DAF

⊕ **TPMS** tyre pressure control system.

**CCC** climate control, component activation.

Troubleshooting guides by symptoms in exhaust gas aftertreatment systems where the catalyst efficiency loss guide in **EAS3** and **EAS 4** systems is worth noting. In addition, the verification check of the NOx sensors before and after the SCR catalytic converter has been developed in the EAS3 system.

Diagrams by model in the main brand models.

Possibility of performing manual diagnosis in **XF**, **CF** and **LF Euro 6** models.

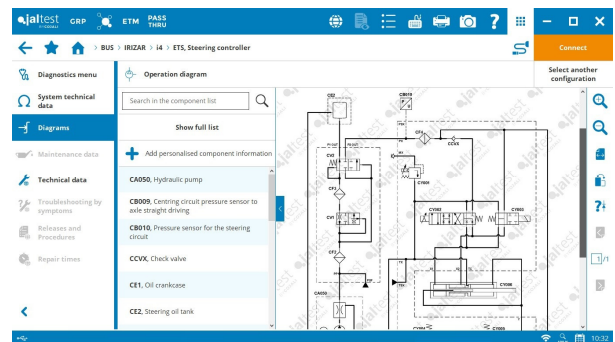
### FORD

Ecotorq **EDC 17 CV41** engine control system, operation data, cylinder cut-out and pressure relief valve reset.

Possibility of performing manual diagnosis in **F-MAX** model in which wiring diagram configurations in **EBS 5**, **TraXon**, **EST-52** systems have also been included.

### IRIZAR

In the last version, the coverage of systems in this brand increased in most of its models, and in this version the coverage of wiring diagram and operation diagram configurations has been expanded. The diagrams of the **VSE ETS** steering control system or the **Gateway VCM** system are worth noting.

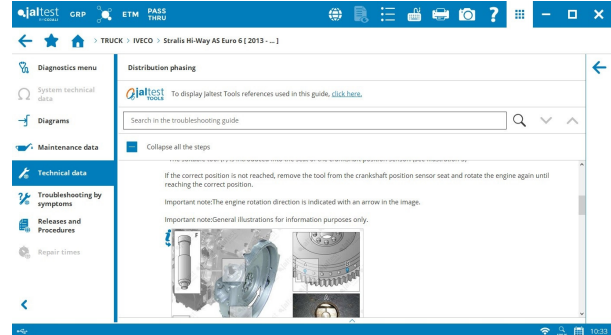
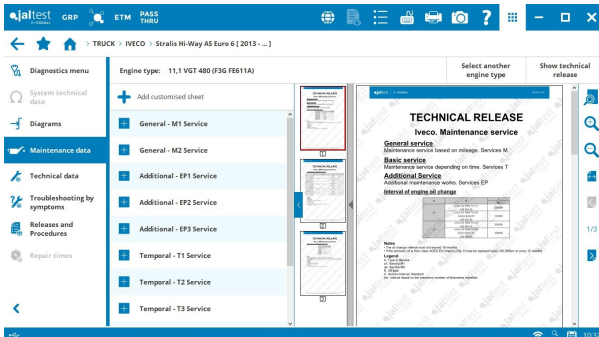


### IVECO/IRISBUS

⊕ Euro 6 engine types such as **11,1 VGT 480 (F3G FL611D)** or **12,8 570 (F3H FL611D)**.

Extended coverage in technical information with new wiring diagram configurations, electronic architecture of communication bus and fuse and relay box.

In addition, maintenance services in **Stralis Hi-Way AS Euro 6** models and procedures such as the distribution phasing in **Cursor 13 (F3H FE611)** engine or the fuel filter change in **Cursor 11 F3G** engines have been included.



## MAN

⊕ **EDC 17Ry** engine control system and **FISC** injection management system for **D1556** engines.

**EDC MD1 ASM2020** engine control system, cylinder cut-out, acceleration test, fuel high pressure test, etc.

**EDC 17** engine control system, injector coding.

**HDS/SCR AdBlue** exhaust gas aftertreatment system, replacement of **Denox 1.x** module.

⊕ Euro 6 engine types such as **12,4 500 (D2676 LF51)** or **6.9 250 (D0836 LFLAN)**. In addition, procedures such as the adjustment of valves and engine brake in the **4,6 190 (D0834 LFL78)** Euro 6 engine type, as well as the fuel filter change in **D2676 LF51-52-53** engine types, have been included.

## MERCEDES-BENZ

In vehicles with **MB4** technology:

**MCM** engine control system, boost air system check.

**MS** maintenance control system, new maintenance service for coolant change. Information of manual reset through the instrument cluster.

**ASAM** cab module, battery replacement, calibration of suspension level for vehicles without CLCS suspension system.

**MPC** lane change **ADAS** system, camera calibration.

In vehicles with **MB5** technology:

**CPC5** drive control system, configuration of the vehicle speed limit and engine idle speed rate.

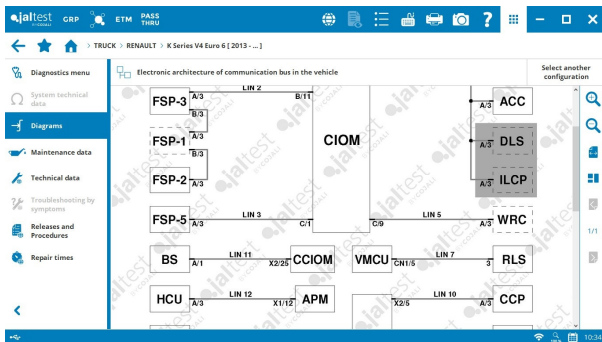
In buses:

**IBH** auxiliary heater, technical release to unlock the heater.

## RENAULT

**VMCU** vehicle control system in vehicles with **V4 technology**, parameter configuration of lights.

**TECU** transmission in vehicles with **V3 and V4 technology**, disassembly and assembly procedure of fork cover.



Diagrams by model in **DXi** models.

Electronic architecture of LIN vehicle communication lines in vehicles with **V4 technology**. Technical data of **EBS** brake system have also been included in these vehicles.

⊕ Euro 6 engine types such as **10,8 460 (DTI 11) [2019 - ...]** or **12,8 520 (DTI 13) [2019 - ...]**. In addition, the checking procedure of the cam position in DTI 13 engines from 2016 and from 2019 with Optibrake+ engine brake has been included.

## SCANIA

**EMS MD1** engine control system, reset of the AdBlue/DEF dosing counter.

**TMS2** transmission, clutch adaptation.

**CCS3** climate control, system reset after the component replacement.

**CMS** chassis control system, parameters of the battery operation, configuration of the transmission shaft damping level, etc.

**BMS (EBS 7)** brake control system with COO8 coordinator, steering angle sensor calibration.

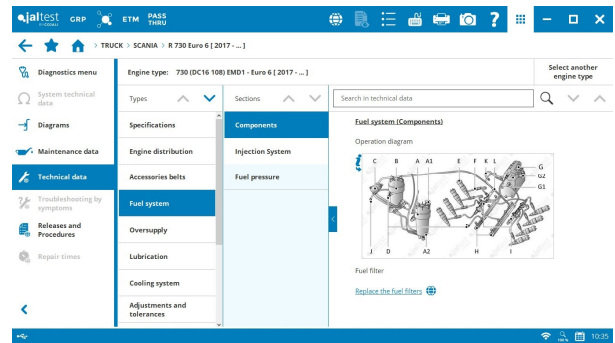
**ECS SMS - ELC4** suspension control system, driving level configuration.

**EMS XPI**, engine control system, fuel dosing valve check.

Guided procedures in Euro 6 engines, such as the assembly and disassembly of the V120 fuel high pressure pump in **DC16** engines.

⊕ Euro 6 engine types such as **730 (DC16 108) EMD1**.

Wiring diagram configurations for buses in the **COO** coordinator, as well as for **CNG Euro 6 EMS OCS1** and **EMS EMO1** engine control systems in the **P 280 Euro 6** truck model.



## SOLARIS

The **IVTM** tyre pressure control system has been developed in the **Urbino 12 Euro 6** model.

## VOLVO

⊕ **Allison** transmission in **FE V3** models.

**EMS** engine control system in vehicles with **V3** and **V4** technology, idle speed rate modification.

**TECU** transmission in vehicles with **V3** and **V4** technology, gear activation with gearbox not installed in the vehicle.

Diagrams by model in vehicles with different technologies.

Replacement procedure of the **I-Shift** transmission pressure sensor in vehicles with **V2** technology.

Operating diagrams and components of the fuel system of **D13A** engines in trucks and **DH12E** engines in buses with access from vehicle technical data.

## TRAILER

Improved adjustment of the total distance travelled in Trailer EBS systems, by not allowing the value to be reduced.

## KNORR-BREMSE

**TEBS Gen2** brake system, continuous updating and improvement of references.

## HALDEX

**EB+ 3rd Gen** brake system, parameter copying and pasting functionality from brake modules from previous generations.

# LIGHT COMMERCIAL VEHICLE

## FIAT

- ⊕ **MD1** engine control system and **UPCU** exhaust gas aftertreatment system for **M9R** engines.

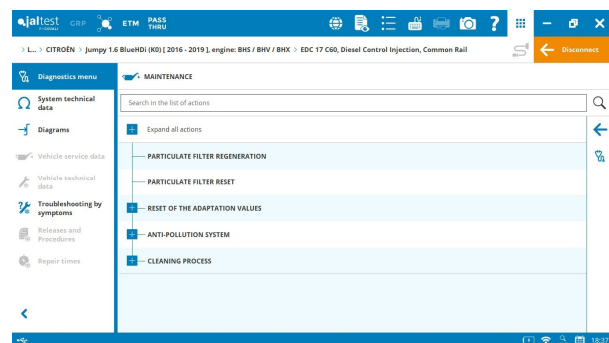
## MERCEDES-BENZ

- ⊕ **EZS** ignition and start-up electronic switch in **Sprinter 907** models.
- ⊕ **CR41R** engine control system in **Vito [447]** models.

## PSA GROUP

- ⊕ Airbag TRW EP3 system in **Jumper** and **Boxer Euro 6D** models.

**EDC 17 C60** engine control system, activations, system checks, Diesel Particulate Filter regeneration, NOx sensor reset, EGR valve calibration, etc.



## RENAULT

**SID 321** engine control system in **Master** models with M9T (2019 - ...) engine, activations, system checks, injector coding, Diesel Particulate Filter reset, SCR catalytic converter regeneration, etc.

- ⊕ **UPCU** exhaust gas aftertreatment system.
- ⊕ **Airbag Gen 2** system.

## VOLKSWAGEN

- ⊕ Central computer and steering system control unit in **Crafter [SY, SZ]** models.