



INNOVATIONS 21.1

SOFTWARE INNOVATIONS

The new software version **Jaltest 21.1** once again offers more improvements and innovations that consolidate this tool as a benchmark in **multibrand diagnosis** for commercial, agricultural and OHW (Off-Highway) vehicles.

Furthermore, in this version, Jaltest includes the coverage of the **Jaltest Marine** project. Contact your distributor and acquire now the licence that also allows you to diagnose vessels and jet skis with the same device and a single software.

Our **Jaltest University** division includes the entire Jaltest training offer, from courses traditionally taught on-site to online courses or webinars. Thus, we have adapted to the new needs for universal and quality training within the reach and at the disposal of any professional in the sector.



Next, the most relevant software innovations are shown.

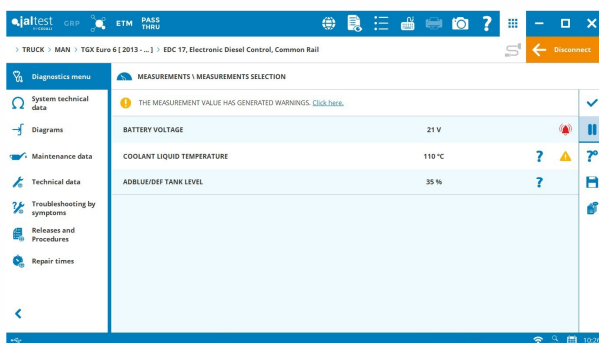
Variant and dataset management through web service

Management of references and variants of control units through web service in some systems. This functionality allows for an extended and updated coverage in new software references.

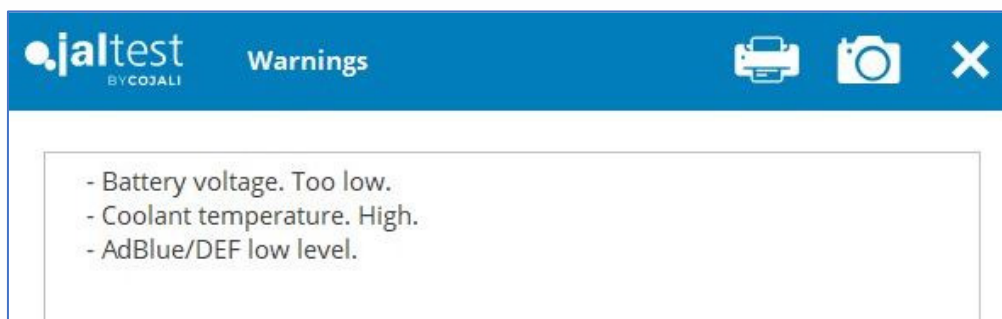
This functionality is available in the following systems:

- AdBlue ACM Renault/Volvo V4 exhaust gas treatment system.
- EMS VOLVO V4 engine control system.
- Delphi DCM6.2 UDS engine control system in Volkswagen.
- EDC 17 C54 UDS engine control system in Volkswagen.
- Scania GMS transmission.
- TECU Volvo/Mack V3 transmission.

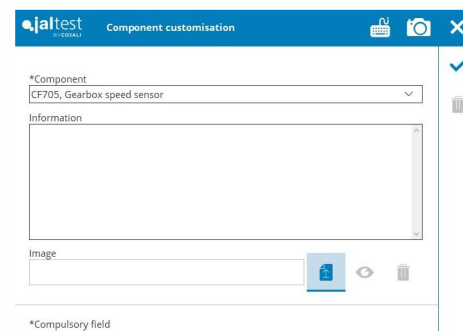
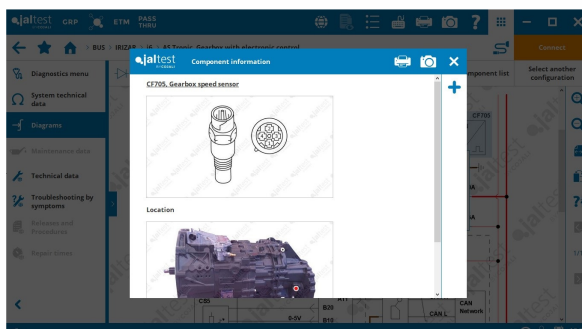
Measurement warnings



In addition to the different display methods available in Jaltest; the possibility to display measurements in graph format, define measurement triggers (also in measurement groups from this 21.1 version) and have measurement warnings during the display of them, now it is also possible to display a summary of slow-dynamic measurement warnings.



Customisation of component information



Others

- Dynamic helps depending on the measurement value in an action.
- Help in the selection of the wiring diagram configuration.
- Error list order. The present errors are shown first.
- Relevant information on functionalities in the action menu.

GRP

Export/Import vehicle list

It is possible to export/import the vehicle list through Excel or CSV files quickly and easily. This allows the user to share the vehicles created in Jaltest with others from other platform or ERP of their company, and vice versa.

To import vehicles, an empty template with a defined format or with the data of the vehicles that the list has can be generated. In this way, some data could also be modified. It is important not to modify the header value or column position of the table.

Vehicle/vessel code	Model identifier	Engine type identifier	Number plate/Vessel	VIN/Serial number	Number or name
1	956	3465	6543AE8	XLER4X20055157655	
2	64	3090	8978IOE	WDB934102L024195	
3	3	2795	2837AE	XL RTE47MS0E959242	
4	586	4172	3412ROE	WUMM1VU004290538	
5	16	3389	7878IOQ	XL RTE47MS0E954564	
6	439	4560	5423ART	WMA4212259132423	

The “Model identifier” and, optionally, the “Engine type identifier” must also be completed in the template. This

operation is important. The model identifier will allow you to relate the vehicle from the list with a model from Jaltest. This is the only way to enjoy all advantages of being able to create GRP vehicles such as, for example, the advantage of associating diagnostic reports. The identifier is obtained by clicking on the right button of the mouse on model/engine type in Jaltest if it has been configured previously.

N Series - ELF Euro 6, engine: 9745 TC

N Series - ELF, engine: 4HJ1

Add customised troubleshooting

Add customised vehicle maintenance data

The GRP ID is 8299

Others

- Possibility of associating several vehicles to a client at once.
- Improvement in the GRP lists including more columns and filters.
- App customisation by user.

The vehicle record, vehicle types, brands, customised measurements, graphic configuration, language, measurement units, etc. will be displayed depending on the user who has registered in the application.

BRANDS AND MODELS

Take into account that this document is only a summary of the most relevant information of this new version. For further information, please visit Jaltest Report.

CITROËN

Jumper U9 with 2.2 engine. BlueHDi (2019 - ...).

Berlingo B9 and K9 models.

Jumpy K0 models.

FIAT

Ducato 140 Multijet (290) with 2.3 FIAGL4113 (2019 - ...) engine.

Doblo Cargo Multijet (223, 263) models.

FORD

F-Max with EcoTorq Euro 5 / Euro 6 engine.

Transit 2.0 EcoBlue (2019 - ...).

ISUZU

C/E Series - GIGA with 6WF1 and 6WG1 engine.

F Series - FORWARD with 6HL1 and 6HK1 Euro 6 engine.

N Series - ELF with 4HJ1 engine.

MERCEDES-BENZ

Citan (415) with OM 607 engine.

eSprinter (910), eVito (447) and EQV (447) electric vehicles with OM 780 ELECTRIC engine.

NISSAN

Civilian.

NV200 Vanette 1.6i (2009 - ...) and **NV200** 1.5 dCi models.

NV400 with 2.3 dCi M9T (2020 - ...) engine.

OPEL/VAUXHALL

Movano B with 2.3 CDTI M9T (2019 - ...) engine.

Vivaro C with 2.0 D 20 DT (2019 - ...) engine.

Combo D models.

PEUGEOT

Boxer U9 with 2.2 BlueHDi (2019 - ...) engine.

Expert K0 models.

Partner B9 and K9 models.

Rifter K9 with 1.6 BlueHDi BHY/BHW (2018 - ...) engine.

RENAULT

Master with 2.3 dCi M9T (2019 - ...) engine.

Maxity Euro 6 (2016 - ...) models.

Kangoo models.

TOYOTA

Proace models.

UD TRUCK

Big Thumb with MD92 engine type.

VOLKSWAGEN

Crafter 55 (SY, SZ) with 2.0 TDI (2018 - ...) engine.

Caddy models.

DIAGNOSIS AND SYSTEMS

Take into account that this document is only a summary of the most relevant information of this new version. For further information, please visit Jaltest Report.

Overall, **technical information and troubleshooting** of the most common error codes in the workshop have been expanded thanks to the communication channels with clients such as the technical support offered by the project, training, Jaltest Feedback and “Product improvement” option.

We work each update to expand the **references and variants** of all systems increasing coverage and ensuring the reliability of the vehicle system interactions.

In systems that apply to several brands, such as **CUMMINS** systems, the activation of the VGT actuator in systems such as **ISF 2.8/3.8/4.5 CM2220** or **ISB CM2150D**, as well as the calibration of the VGT actuator in 4-cylinder **ISB engines** have been included. The colour codes of the wiring diagram cables have been included in systems from **ALLISON** brand.

TRUCK and BUS

ALEXANDER DENNIS

Extended system coverage on most models.

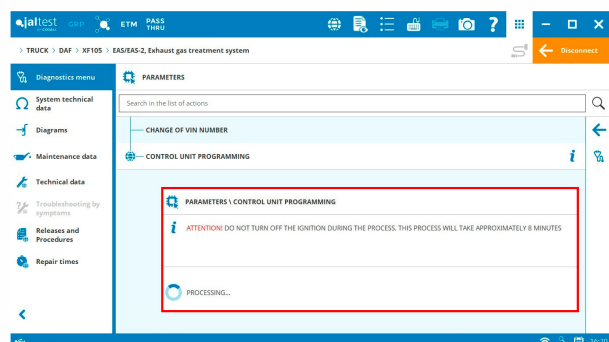
DAF

EAS/EAS2 exhaust gas aftertreatment system, module programming (*functionality available with Internet access*).

EAS 3 exhaust gas aftertreatment system, soot level reset in the Diesel Particulate Filter.

VECU Central Computer, CAN line test and System Display.

ZF AS Tronic transmission, assembly and disassembly procedure of the control unit and troubleshooting guides for the most common errors such as the error code 3155.



FORD

- ⊕ **T-CLUSTER** instrument cluster and **DTCO** tachograph for **Cargo** models.

HINO

- ⊕ **ECM A05C** engine control system for **PROFIA (700 Series)** models.

IRIZAR

Extended system coverage on most models.

- ⊕ **VCM** Gateway and **VSE ETS** steering.

ISUZU

- ⊕ **AEBS** emergency braking system for **N Series Euro 6** models.
- ⊕ **6WF1/6WG1 on RS232** engine control system for **C/E Series - GIGA** models.
- ⊕ **6HL1** engine control system.
- ⊕ **4HJ1** engine control system.

6WG1-TC on CAN engine control system, particulate filter regeneration.

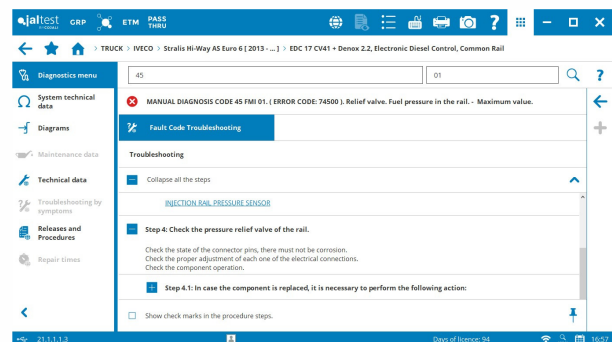
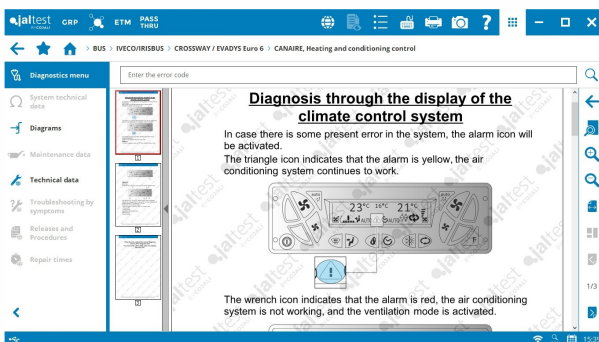
4HK1-TC Euro 6 control system, regeneration of the soot particulate sensor.

ABS/ESC hydraulic braking system, calibration of the steering angle sensor and the acceleration sensor, modification of the vehicle VIN number in the **N Series - ELF** models.

IVECO/IRISBUS

- ⊕ **SC 1000** HVAC Spheros climate control systems, **CANAIRE** Thermo King and **Master 68** multiplexing system.

EDC 17 CV41 + Denox 2.2 engine control system, new supported references of the control unit. Also, troubleshooting guides for the most common errors such as the error codes 14500 and 74500 have been included.



Denox 2.1 exhaust gas aftertreatment system, module programming (functionality available with Internet access).

Activations of components in several systems such as the **TraXon** transmission, the **BCM** central computer or the **LDWS** and **AEBS ADAS** systems from Wabco.

KARSAN

Extended system coverage on most models.

MAN

EDC MD1 ASM2020 system, compression test, AdBlue/DEF pressure test and AdBlue/DEF dosing test.

Activation of components in the **SGC Scania 12+2** and **TraXon Tipmatic** transmissions.

Filling and drainage procedure of the hydraulic system of the **HGS** manual gearbox with hydraulic controller.

Fuel filter replacement procedure.

Vehicle technical data of the braking system in all **TG Series** models.

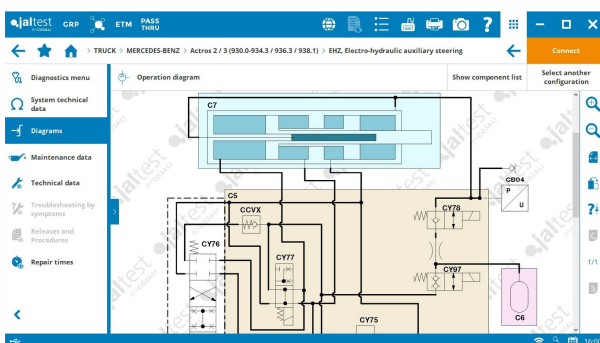
⊕ Euro 6 engine types such as **12.4 480 (D2676 LF25)** or **6.9 290 (D0836 LFLAO)** and also Euro 5 EEV engine types such as **6.9 290 (D0836 LOH64)**, **12.4 441 (D2676 LOH26)**, etc. in buses.

MERCEDES-BENZ

⊕ **MUX 1, MUX 2** and **MUX 3** multiplexing systems in the new **Unimog** model.

NGT CNG engine control system, calibrations.

SSAM cabin module (models with **MB4 technology**), battery replacement, power take-off parameters, etc.



TPM tyre pressure monitoring system (models with **MB5 technology**), parameters.

ACM 3 exhaust gas aftertreatment system, Diesel Particulate Filter regeneration.

EHZ electro-hydraulic auxiliary steering, system hydraulic diagram.

Also, troubleshooting guides for the most common errors have been included in

several systems. For example, for the error code 6721 of the **Bluetec** exhaust gas aftertreatment system of **Actros 2**.

MITSUBISHI FUSO

⊕ **ABS** braking system for **ROSA** models.

NISSAN

EDC VP 30/44 system, modification of the VIN number in **Cabstar** models.

Extended activation coverage on engine control systems.

OTOKAR

Extended system coverage on most models.

RENAULT

⊕ **ECM ZD DTi3 Euro 6** engine control system, **ADCM** exhaust gas aftertreatment system and **ABS** braking system in new **Maxity Euro 6** models.

TECU transmission in vehicles with **V3 and V4 technology**, parameter modification of the transmission operating mode.

Vehicle technical data of the braking system in all **DXi Series** models.

SCANIA

In this brand, new supported references of control units and the increase in the system identification speed in system scan can be highlighted.

EMS MD1 engine control system, fuel dosing valve check, fuel leak test, multiple cylinder cut-out, etc.

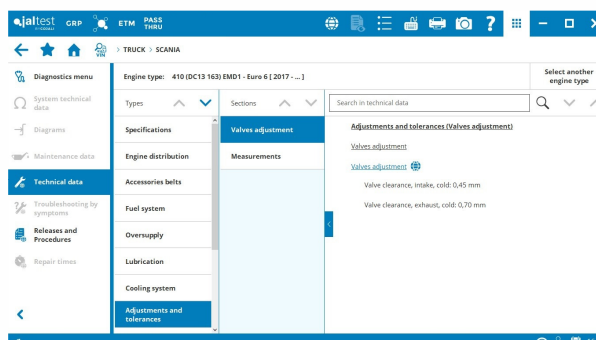
AUS 3 and **AUS 4** audio systems, configuration of audio and camera parameters.

EMS XPI engine control system, troubleshooting guides for the most common errors such as the error code 4488.

Guided procedures in Euro 6 engines such as the assembly and disassembly procedure of the fuel high-pressure pump in **DC09** and **DC13** engines, the drainage and filling procedure of the coolant circuit in **DC16** engines or the distribution phasing in **DC16** engines.

⊕ Euro 6 engine types, for example, **410 (DC13 163)** or **580 (DC16 117)**.

Wiring diagram configurations for buses in the **EMS XPI S7** 5 and 6-cylinder engine control system.



TEMSA

Extended system coverage on most models.

VAN HOOL

Extended system coverage on most models.

VDL

Extended system coverage on most models.

VOLVO

TECU transmission in vehicles with **V3** and **V4** technology, modification of the maximum engine torque permitted in the power take-off.

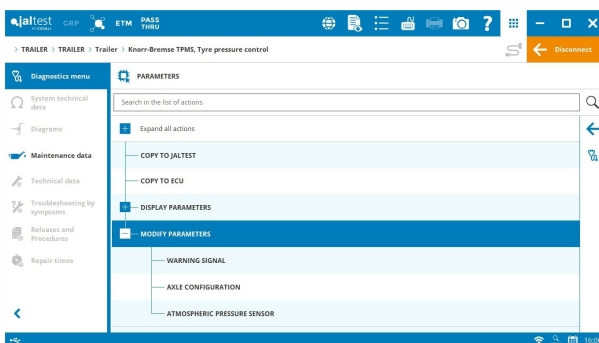
VMCU vehicle control system, modification of parameters concerning the cruise control and speed limitation.

LPOS ADAS control system, static calibration of the radar distance sensor in buses.

Troubleshooting guides for the most common errors such as the error code PSID 28 FMI 7 in the **I-Shift** transmission in vehicles with **V2** technology.

TRAILER

KNORR-BREMSE



TEBS Gen2 braking system, continuous updating and improvement of supported variants and references, new parameters in AUX IO3.

TPMS tyre pressure control system, alarm configuration, ambient sensor learning, etc.

WABCO

EBS E braking system and **ELEX** extension module, continuous updating and improvement of supported references and variants.

LIGHT VEHICLES

FIAT

- ⊕ **ICU** instrument cluster in **Talento** models, developed with advanced functions.
- ⊕ **MJD 6F3** engine control system, **DCU2** exhaust gas aftertreatment system and **ABS/ESP MK60** braking system in **Doblo** models, which include wiring diagrams.

FORD

- SID 211** engine control system, SCR catalytic converter maintenance.

MERCEDES-BENZ

- ⊕ **MFK** camera ADAS systems and **ABA** emergency braking system in **Sprinter 907/910** models, which include the camera calibration and the parameter setting of the radar height respectively.

mitsubishi

- ⊕ **ABS** braking system in **Triton/L200** models with 4N15 engine, developed with advanced functions.

NISSAN

- ⊕ **SID 231** engine control system in **NV400** models with M9T (2019 - ...) engine.
- ⊕ **ICU** instrument cluster in **NV300** models, developed with advanced functions.
- ABS/ESP V7.0** braking system in **NV300** models, activations, calibrations and parameters.

PEUGEOT

- DCM 7.1 + SCR**, engine control system, maintenance reset.

RENAULT

- ⊕ **SID 321** engine control system in **Master** models with M9T (2019 - ...) engine, which includes wiring diagrams.
- ⊕ **DCM 3.4** and **SID 307** engine control systems in **Kangoo** models.

VOLKSWAGEN

- ⊕ **MFK** camera ADAS system and distance sensor system in **Crafter [SY/SZ] (2016 - ...)** models, which include the calibration of the camera and radar respectively.

EDC 17 CP54 UDS engine control system in Amarok 3.0 [S6, S7] TDI (2016 - ...) models, injector coding and maintenance reset.

