



jaltest **cv** COMMERCIAL VEHICLES

INNOVATIONS 20.3

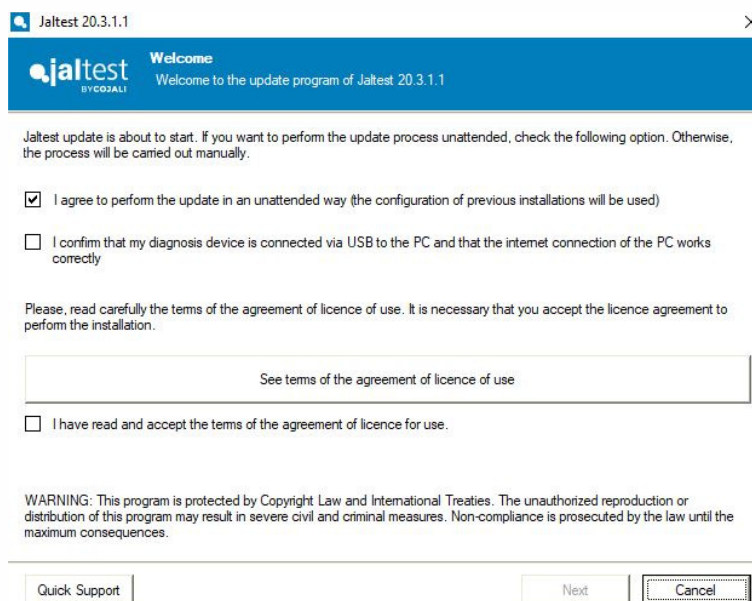
SOFTWARE INNOVATIONS

The new software version **Jaltest 20.3** once again offers more improvements and innovations that consolidate this tool as a benchmark in **multibrand diagnosis** for commercial, agricultural and OHW (Off-Highway) vehicles.

Next, the most relevant software innovations are shown.

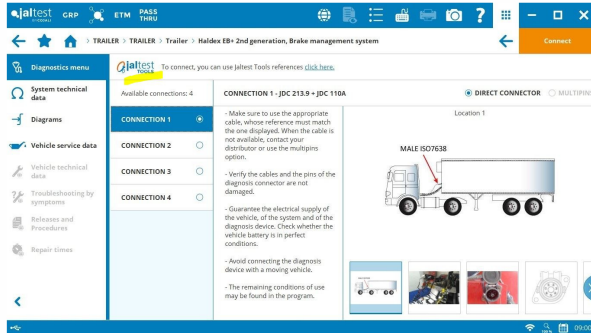
Update process without user intervention

The update process without user intervention is based on the configuration of previous installations.

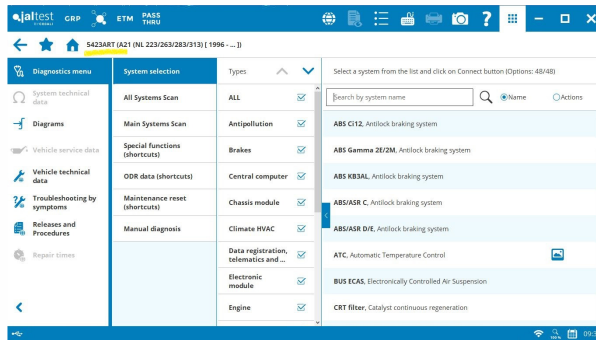


Jaltest Tools references

Tools from Jaltest Tools catalogue associated in troubleshooting, technical releases and actions. For example, it is possible to find information on Jaltest Tools references in ADAS system calibration guides, on engine flywheel rotator tools in start-up guides in IVECO Cursor engines among others, on Jaltest PTE (Portable Trailer E-Supply) device in connections to Trailer systems, etc.



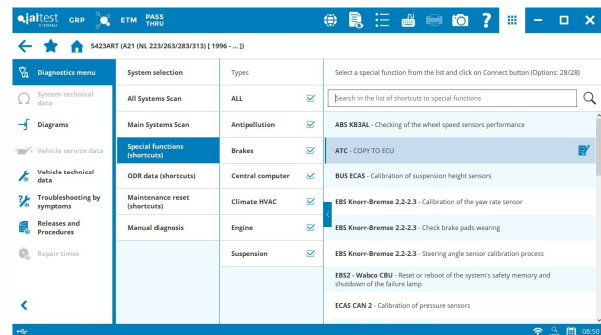
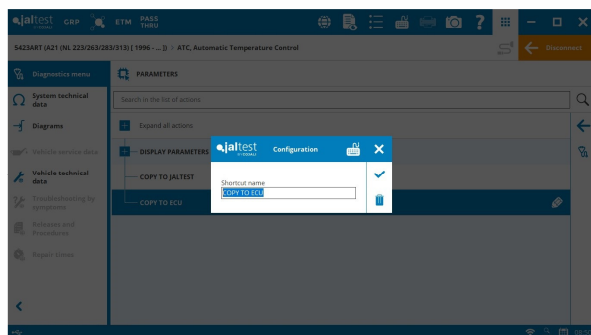
VIN data



The VIN number appears in the model selection path with accesses to the vehicle from GRP (number plate is also taken into account), from the vehicle browser by VIN or when connecting to a system if this data is obtained.

Shortcuts to special functions

When completing an action of a system (only if it has been carried out), the user can include it in the shortcut menu and customise the shortcut list to special functions.



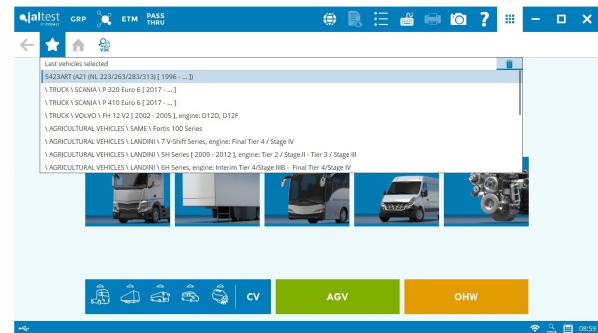
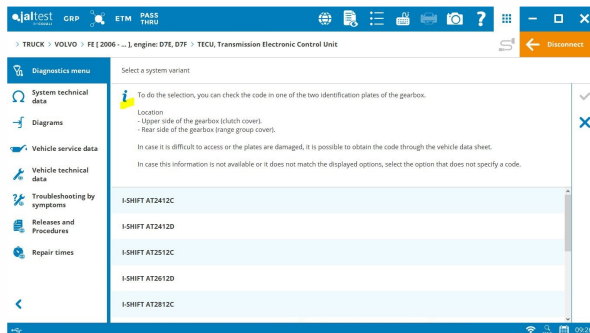
Others

Browser of the model families. A search filter has been included in the display form of the brand model list.

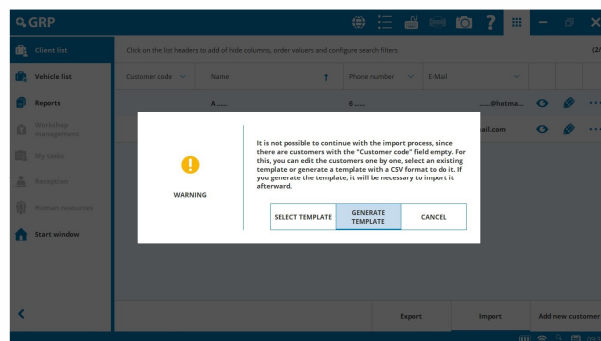
Display of the variant helps in the same form. The selection or edition helps of variants can be displayed in the same form. Users do not need to access through INFO button but they appear directly in the same edition or selection form of variant.

Edition of the table column size. The width of the table columns can be modified in the course of an action allowing the user to display better the data shown.

Deletion of the last diagnosed vehicle record.



GRP Export/Import client list



It is possible to export/import the client list through Excel or CSV files quickly and easily. This allows the user to share the clients created in Jaltest with others from other platform or ERP of their company, and vice versa.

To do this, a new compulsory and single field called “Customer Code” has been created for each client. This field must be

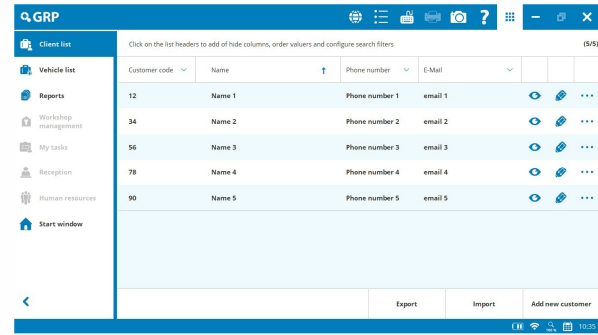
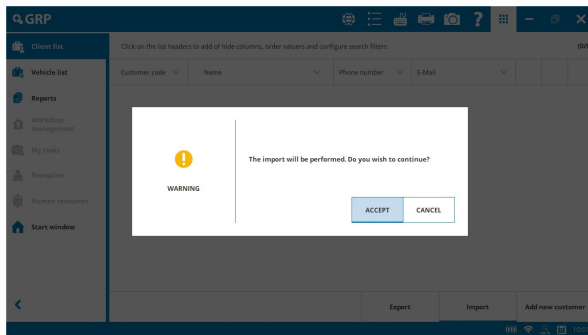
completed before using this function. When clicking on “Import” button, the programme will advise the user about it providing them with a template so that they can fill out this field previously for all their current clients in GRP.

If the client list in GRP is empty, first of all, “Export” function should be used to create a template where table headers are generated. It is important not to modify the header value or column position of the table.

A	B	C	D	E	F	G	H	I	J	K
Customer Code	Name	VAT No.	Address	City	Postal code	Province	Country	Phone number	Fax	email
11	Name 1	CIF 1	Address 1	City 1	Postal code 1	Province 1	Country 1	Phone number 1	Fax 1	email 1
22	Name 2	CIF 2	Address 2	City 2	Postal code 2	Province 2	Country 2	Phone number 2	Fax 2	email 2
45	Name 3	CIF 3	Address 3	City 3	Postal code 3	Province 3	Country 3	Phone number 3	Fax 3	email 3
67	Name 4	CIF 4	Address 4	City 4	Postal code 4	Province 4	Country 4	Phone number 4	Fax 4	email 4
83	Name 5	CIF 5	Address 5	City 5	Postal code 5	Province 5	Country 5	Phone number 5	Fax 5	email 5

If clients in GRP already exist, “Export” function should be used to export an empty template or the template with data of the

current clients. In this way, it is possible to update the data from them. By using these templates and creating data in the table, the user can already import all the clients of their ERP and keep GRP up to date in Jaltest.



Improvement of client and vehicle list forms

Possibility of showing more columns in the vehicle and client lists, show/hide columns function, possibility of ordering new filters, etc.

Price/Hour by user

The possibility of defining a Price/Hour for each user in GRP allows the user to create diagnosis and repair order reports with more accurate data. If a Price/Hour is not defined for each user, the one defined in the Configuration menu (user settings) > Company data will be used.

BRANDS AND MODELS

FIAT

Talento 1.6 with R9M engine type.

FORD

Transit Custom 2.0 [2018 - ...].

HYUNDAI

H-1, iMax, iLoad 2.5 CRDi Euro 6 and MIGHTY models (Asia & Oceania).

IVECO

Scudato (LATAM) models.

MAHINDRA

Scorpio Pick-Up 2.2 CRDe (LATAM, Indian).

MERCEDES-BENZ

Sprinter 910 with OM 651 engine type.

mitsubishi

L200/Triton with 4N15 engine type.

MITSUBISHI FUSO

Supergreat 17 with OM470 engine.

NISSAN

Frontier 2.5 YD25 with D40 engine type.

PSA Group

Citroën Jumper and Peugeot Boxer 2.2 BlueHDi [2019 - ...] models.

UD TRUCK

Quon Euro 4 (GE13 Nissan Diesel).

VOLKSWAGEN

Amarok 3.0 TDI.

DIAGNOSIS AND SYSTEMS

Take into account that this document is only a summary of the most relevant information of this new version. For further information, please visit Jaltest Report.

Overall, **technical information and troubleshooting** of the most common error codes in the workshop have been expanded thanks to the communication channels with clients such as the technical support offered by the project, training, Jaltest Feedback and “Product improvement” option.

We work each update to expand the **references and variants** of all systems increasing coverage and ensuring the reliability of interactions with vehicle systems.

The **SAE J1939** regulation has been expanded and updated with more than 4300 new measurements and 4000 error codes.

We continue working on developing the most important actions that offer solutions for workshop, for example, the programming of the Denoxtronic 2.2 module has been developed in the **Cummins ISB6.7 CM2250** system that is in several brands. In this brand, Multiplex parameters have been developed in more than 20 systems.

TRUCK and BUS

DAF

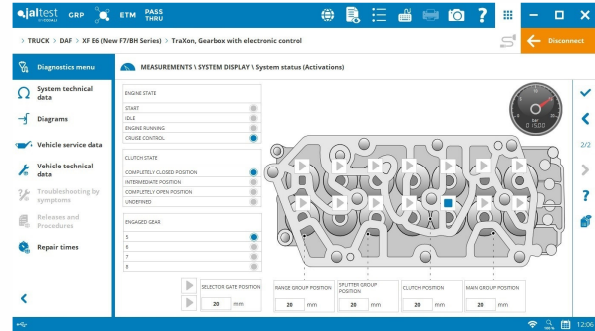
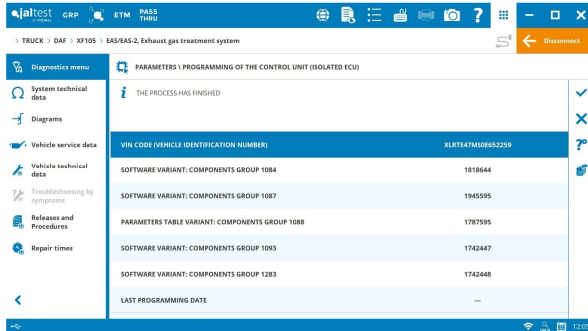
EAS/EAS2 exhaust gas aftertreatment system, module programming (*functionality available with Internet access*).

EAS 3 exhaust gas aftertreatment system, system checks such as the fuel metering valve activation among others.

EAS 4 exhaust gas aftertreatment system, unlock function of the Diesel Particulate Filter regeneration.

ZF Traxon transmission, activations in System Display.

BEM battery supply Control Unit in **CF** and **XF E6** models, battery charge level reset and replacement.



HINO

N04C engine control system in **300 Series** models, Diesel Particulate Filter reset.

A05C engine control system in **500 Series** models, operation data reset.

ISUZU

⊕ New **6WG1** and **6WF1** engine control systems in **C&E -GIGA Series** models (JDC 219A connector in Oceania).

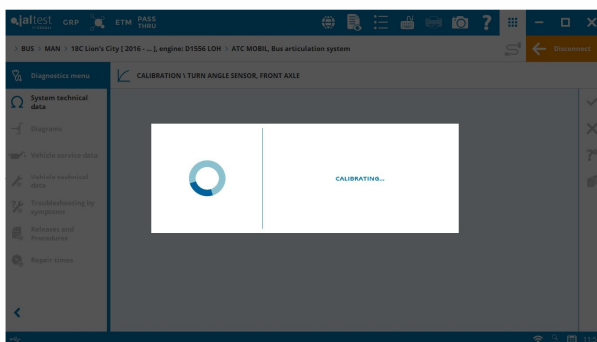
⊕ ADAS system, **Wabco OnGuard Plus** for ISUZU in **N Series** models.

IVECO

Denoxtronic 2.1 exhaust gas aftertreatment system, programming of the module for some of its variants. This programming is also possible in **IRISBUS buses** (*functionality available with Internet access*).

BCM central computer in Euro 6 models, battery replacement.

MAN



ADC MD1 ASM2020 engine control system, component activation.

EAM compressed air processing and generation system in **12C** and **18C Lion's City** buses, dryer filter calibration after replacing the component.

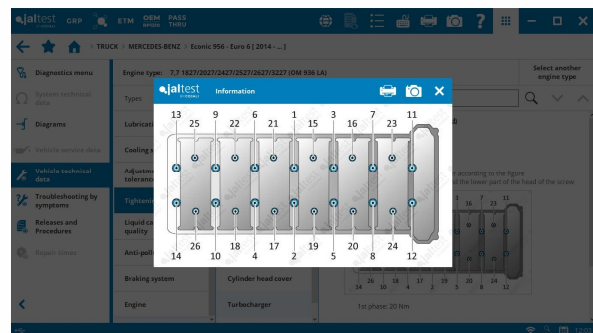
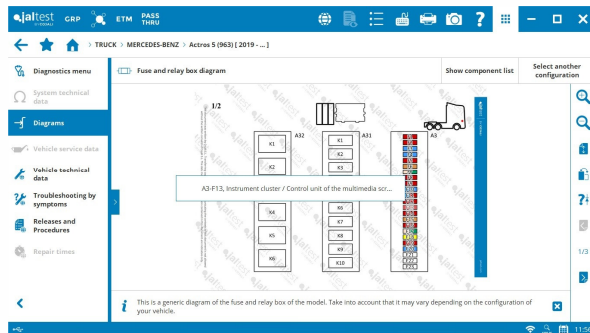
ATC Mobil articulation system, calibration of the front rotation angle sensor and articulation sensor.

MERCEDES-BENZ

MPC lane change detection system in buses, dynamic calibration of the camera.

⊕ New systems in **Actros 5 (963)** and **Arocs 5 (964)** models with technical information available such as the **EAPU 03T** compressed air processing and generation system. Fuse and relay box diagram is included in the models.

Engine type technical data in **Unimog** and **Econic** models.



MITSUBISHI-FUSO

4M50 (K Line) engine control system in **Rosa** buses, reset and regeneration of the Diesel Particulate Filter, automatic configuration of the transmission, etc.

4P10 Euro 6 engine control system, power take-off parameters, speed limit configuration, etc.

NISSAN

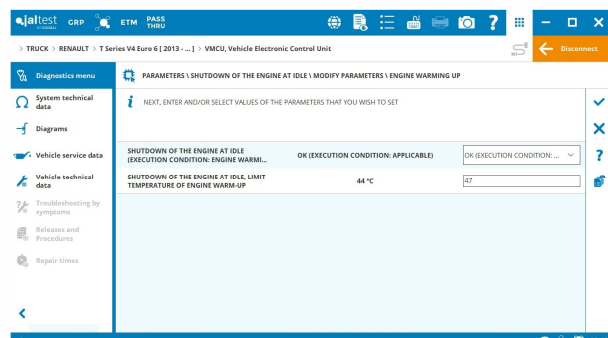
⊕ **ZF 6AS700** transmission in **NT500** models.

RENAULT

VECU engine control unit in models with V2 technology, fan working parameters.

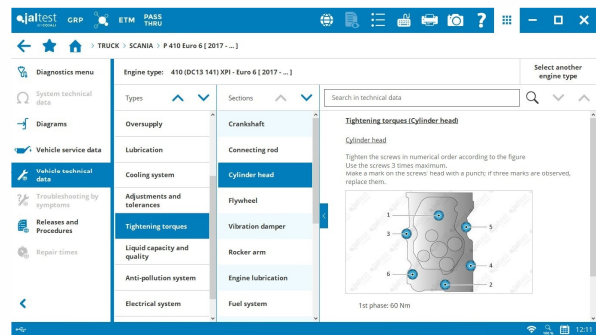
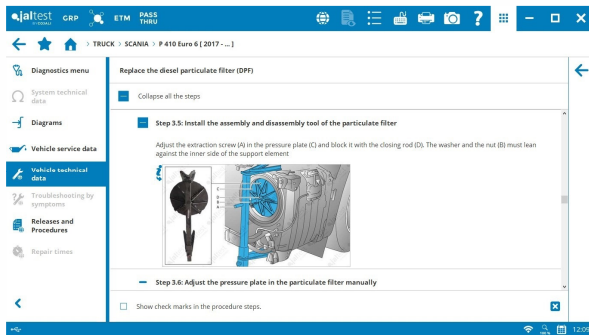
VMCU engine control unit, battery reset and automatic shutdown of the engine at idle parameter.

CCM climate control, activations in the auxiliary heater components.



SCANIA

Diesel Particulate Filter replacement procedure in Euro 6 models with access from “Vehicle data” and “Releases and Procedures” menu. New **DC07 Euro 6** engine types have also been included in **New P Series** models.



EMS EMD1 engine control system, basic adjustment of the power take-off adaptation and new checks such as the Diesel Particulate Filter differential pressure sensor test, among others.

EMO2 (LNG Euro 6) engine control system in the **R 410 Euro 6** model, system activations.

New parameters such as the driving behaviour in **GMS** transmissions or the light configuration in the **VIS** lighting system.

⊕ **ZF Ecolife 4** transmission in buses.

VOLVO

Replacement procedure of the sleeves and injectors in Common-Rail **D13K** engines of Euro 6 model.

⊕ **VS** driver assistance camera in models with **V4** technology.

EBS braking system in models with **V4** technology, configuration of the brake performance factor of the tractor head regarding the trailer.

TECU transmission in models with **V3** and **V4** technologies, check of the clutch synchronisation and modification of the highest starting gear parameter.

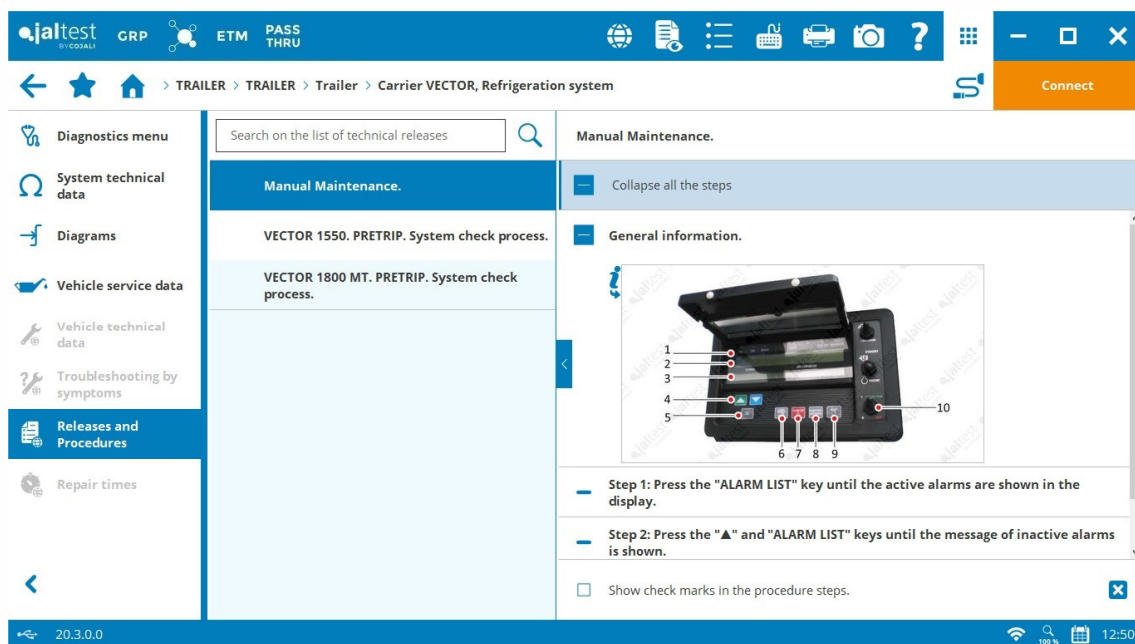
TRAILER

CARRIER

Vector system, manual maintenance procedure.

KNORR-BREMSE

TEBS Gen2 braking system, continuous updating and improvement of developed references and variants.



LIGHT VEHICLES

FIAT

⊕ **CFC 348 CAN** transmission in **Ducato** models, it includes wiring diagram.

FORD

⊕ **SID 212** engine control system in **Transit Custom 2.0 [2018 - ...]** models, it includes wiring diagram.

IVECO

⊕ **Agile (K Line)** transmission in Euro 3/4 models, it includes wiring diagram.

MERCEDES-BENZ

⊕ **FAG 910 (9G-Tronic)** transmission in the new **Sprinter WDB910** model with **OM651** engine.

CR41 engine control system, Diesel Particulate Filter regeneration and reset, activations, operation data, checks, etc. in the **Sprinter WDB907** model. In this model, the instrument cluster maintenance reset and the ESP sensor calibration have also been developed.

EFB parking brake system in the **Vito [447]** model, calibration after replacing brake pads.

NISSAN

EDC 17 C84 engine control system in the **NV300** model with **R9M** engine, maintenances.

PSA Group

DCM 6.2 engine control system in **Citroën Jumper** and **Peugeot Boxer 2.0 BlueHDi [2015 - 2019]** models, injector coding, EGR calibration, activations...

RENAULT

In these models, the Diesel Particulate Filter regeneration and injector coding have also been developed in the **SID 310** engine control system and technical information has also been included in the **UDM AdBlue/DEF** dosing system.

VOLKSWAGEN

EDC 17 C64 UDS engine control system in **Crafter [2E, 2F] [2011 - 2016]** models, checks and maintenances.

