



jaltest cv COMMERCIAL VEHICLES

INNOVATIONS 20.2

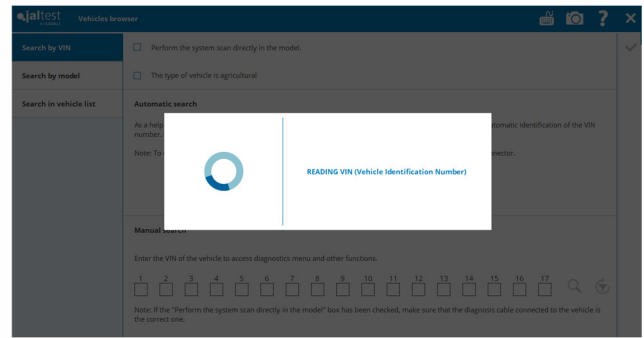
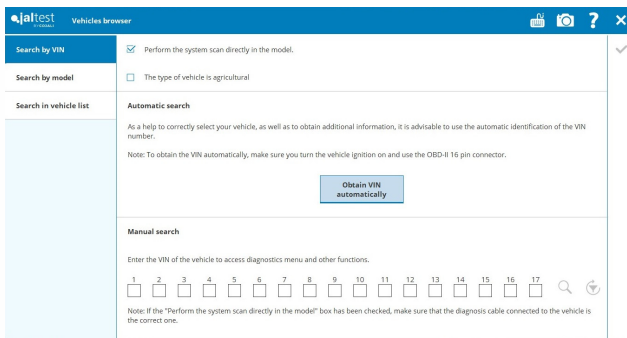
SOFTWARE INNOVATIONS

The new software version **Jaltest 20.2** once again offers more improvements and innovations that consolidate this tool as a benchmark in **multibrand diagnosis** for commercial, agricultural and OHW (Off-Highway) vehicles.

Next, the most relevant software innovations are shown.

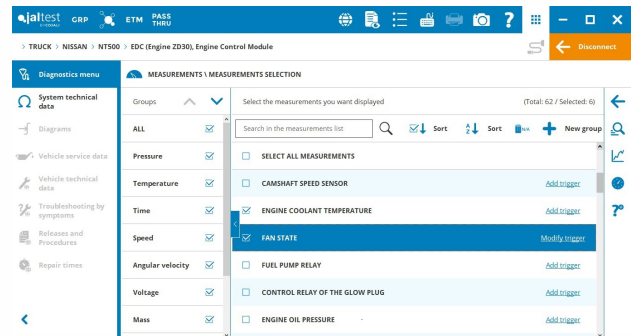
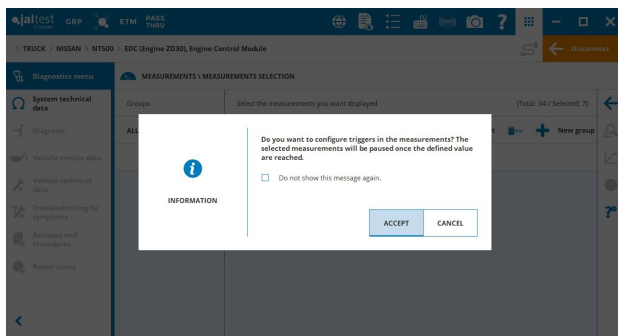
Obtain VIN automatically

In the vehicle browser of the main window of Jaltest, the search by VIN has been divided in: manual search and automatic search. Moreover, the option “Perform the system scan directly in the model” can be checked, which is valid for both searches.

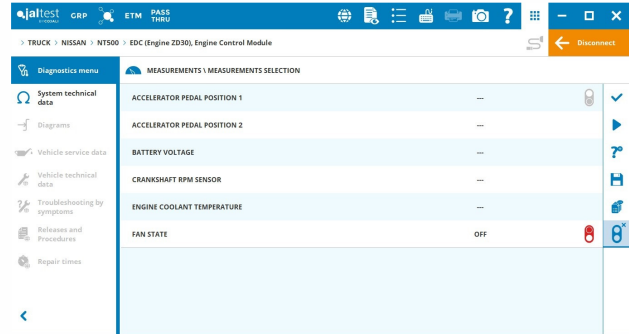
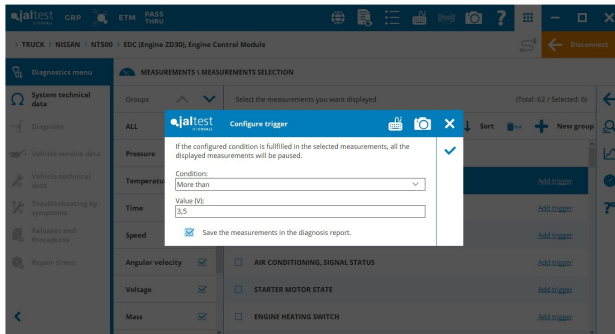


Define triggers in measurements

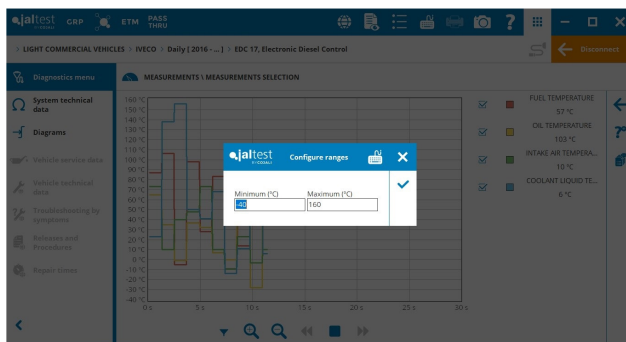
In the measurement selection, triggers can be configured. The selected measurements will be paused once any of the defined values has been reached. The values that can be defined for a measurement are: more than, less than, equal to and different from.



Furthermore, the measurements paused through a trigger or through the corresponding button will save their value in the diagnosis report.



Measurement graph display tools

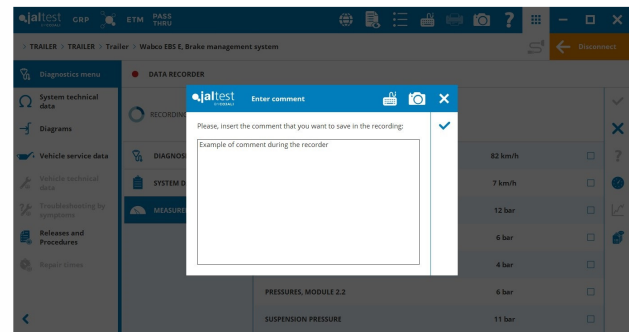
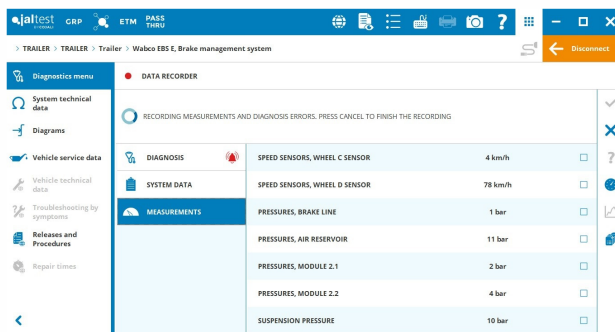


When the measurements are displayed through a graph, it is possible to zoom in them.

Moreover, if all displayed measurements have the same unit, the Y-axis range can be configured by clicking on the “filters” icon on the left.

Improvements in the data recorder

The data recorder has been improved. From now on, the measurements are displayed during the recording and, in addition, triggers can be used to pause the test or to write comments at any moment during the recording. Furthermore, the measurements can be graphed and displayed with instruments.



In the data playback, it is possible to navigate directly to the comments defined during the recording. The comment can be read in the information panel at the bottom.

DIAGNOSIS IDENTIFIER	0B020700 (E5)
WABCO REFERENCE	4801020640
SOFTWARE VERSION	TE004023
ELECTRONIC EXPANSION MODULE (ELEX)	NON-EXISTENT

Example of comment during the recording

Name: Wabco EBS E, Brake management system_23042020173923.scfx Date: 23/04/2020 17:39

System Display in functions

The image shows the measurements represented in a System Display during the particulate filter regeneration in a Scania vehicle. The user will be able to evaluate the exhaust gas system in an easy and intuitive way during the test.

MAINTENANCE \ PARTICULATE FILTER REGENERATION

TEST STATUS: REGENERATION IN PROCESS, REGENERATION NOT ALLOWED, REGENERATION INTERRUPTED, ERROR

PHASE: REGENERATION NOT ALLOWED, REGENERATION IN PROCESS, ACTIVE REGENERATION, REGENERATION COMPLETED

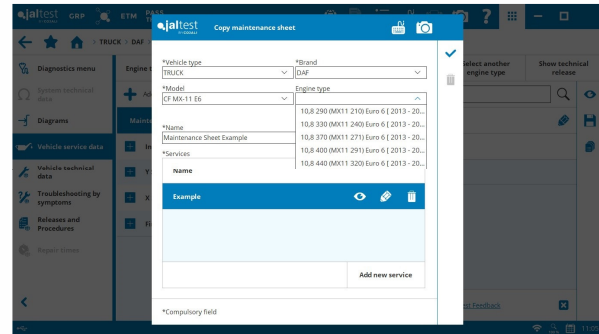
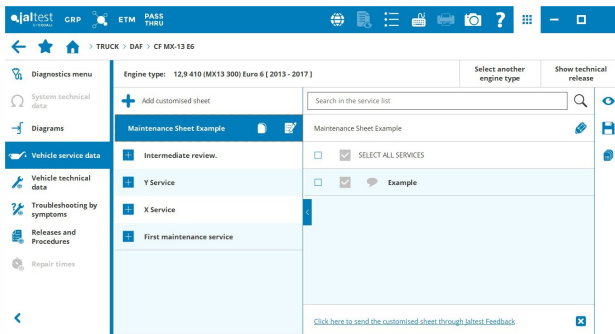
ABBLUE/DEF. METERED QUANTITY MEASUREMENT: ---

NOX NITROGEN OXIDE SENSOR BEFORE THE S.: ---

REMAINING TIME FOR THE END OF THE PROCESS: ---

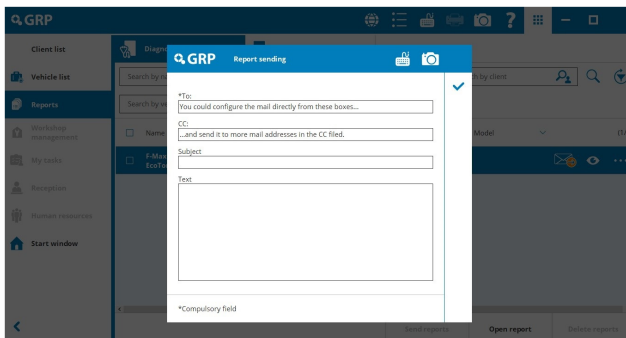
Improvements in vehicle maintenance data

A search filter has been added in the display form of the vehicle maintenance data. Moreover, from now on, the customised maintenance sheets can be copied to other models synchronising the information in the GRP Synchro and GRP Enterprise databases.



GRP

Report sending to an email address

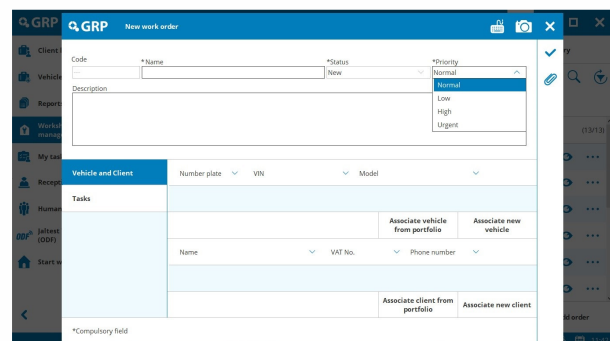


In the last version, the report sending to a customised email address in the configuration menu was presented and, in this version, this functionality is improved allowing the configuration of one or several mailing addresses and the body of the email at the same time.

Priority of the work orders

It is possible to establish a priority in the work orders of GRP Enterprise. The priorities can be: normal, low, high and urgent.

The tasks acquire the priority of the order.



BRANDS AND MODELS

Take into account that this document is only a summary of the most relevant information of this new version. For further information, please visit Jaltest Report.

ASHOK LEYLAND

19XX, 28XX, 46XX and 55XX models.

HYUNDAI

H-350 with D4CB engine.

IVECO

ACCO Euro 5.

MAHINDRA

Bolero, Bolero CNG, Maxximo.

MAN

12C Lion's City 12 m and 18C Lion's City 18 m buses manufactured from 2016 with D1556 LOH engine.

MAZ

New models by engine type.

MERCEDES-BENZ

Actros 5 (WDB963) and Arocs 5 (WDB964) manufactured from 2019.

MULTICAR

M31 3.0 with F1C Euro 6 engine.

M26 and M29 with VM R 754 engine.

UX100 with MB engines.

Tremo 1.9 with AVM engine.

NISSAN

NV300 with R9M engine.

OTOKAR

Kent U LE Euro 6.

SCANIA

N 230 UD bus.

New Euro 6 truck models of the R, P, G and S series.

VOLKSWAGEN

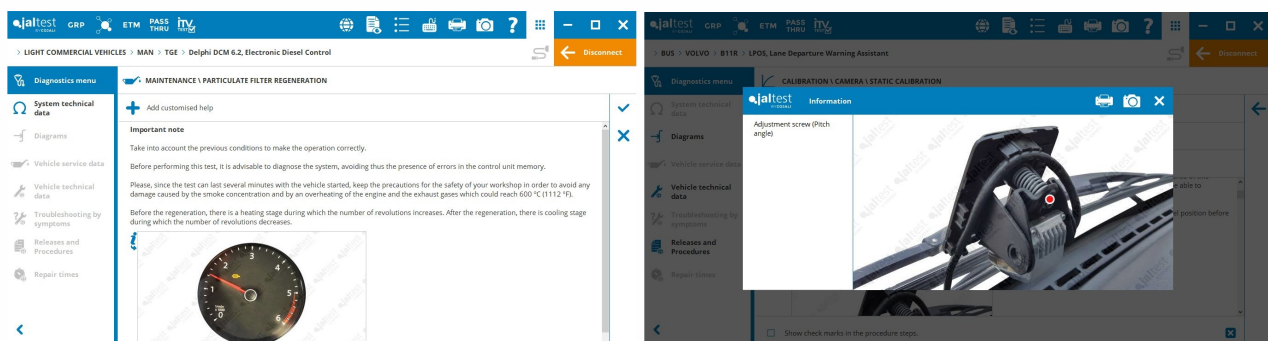
Crafter 30,35,50 [SY, SZ] & T6 [SG].

DIAGNOSIS AND SYSTEMS

Take into account that this document is only a summary of the most relevant information of this new version. For further information, please visit Jaltest Report.

OUTSTANDING DEVELOPMENTS

- Calibration of the **ECAS 5** suspension in **DAF Euro 6** models.
- DPF particulate filter regeneration of the **Delphi DCM 6.2** system in **MAN TGE**.
- **EDC ASM2020** engine control system and **EAM** compressed air treatment and generation system in **TG Series Euro 6** models of **MAN**.
- System checks and component reset in the **ADCM** exhaust gas aftertreatment system of **Nissan** in **Euro 6** models.
- Modification of parameters in the **EMS XPI** engine control system of **Scania**, such as the idle speed rate, reduction of the vehicle speed limit in economy mode, etc.
- Calibration of the camera of the **ADAS LPOS V3** system in **Volvo buses**.
- Deletion of the inducement mode of the SCR exhaust gas aftertreatment system in the **EMS** engine control system of **Volvo** and **Renault** models with **V4** technology.
- Coverage extension in the **Cummins ISB5.9 CM2150** system installed in many brands, as for example **TATA**.



TRUCK and BUS

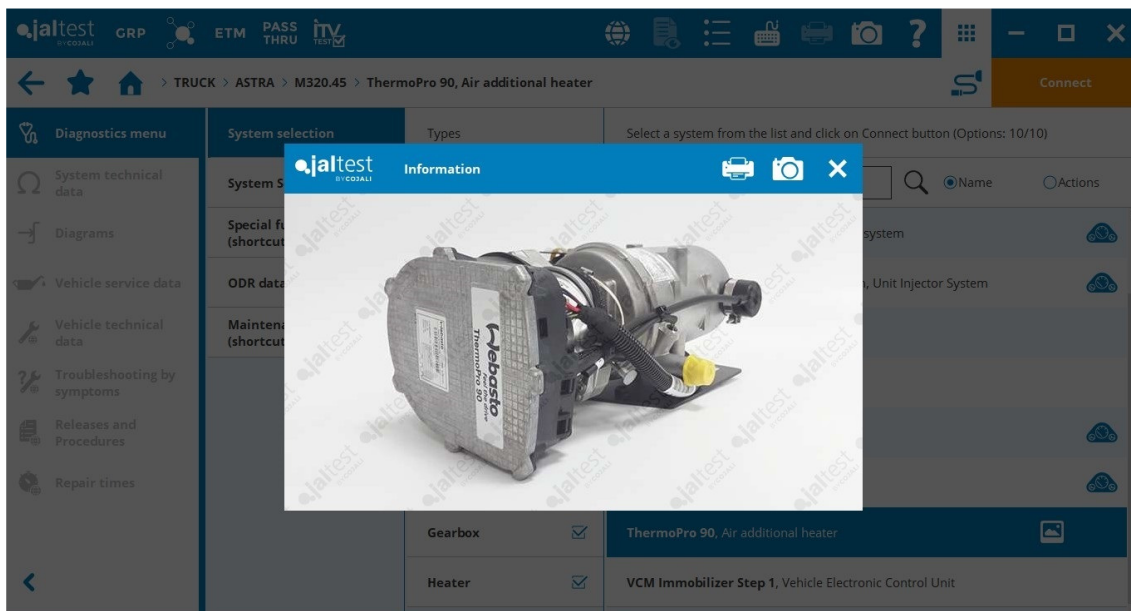
ASHOK LEYLAND

Cummins ISB5.9 CM2150 engine control system, operation data, cylinder cut-out, modification of parameters such as the speed limit or the automatic shutdown at idle speed, and the reset of the maintenance service.

Delphi H3/H4 engine control system, additional information of the FFD errors and system actuations.

ASTRA

⊕ **Webasto ThermoPro 90** auxiliary heater.

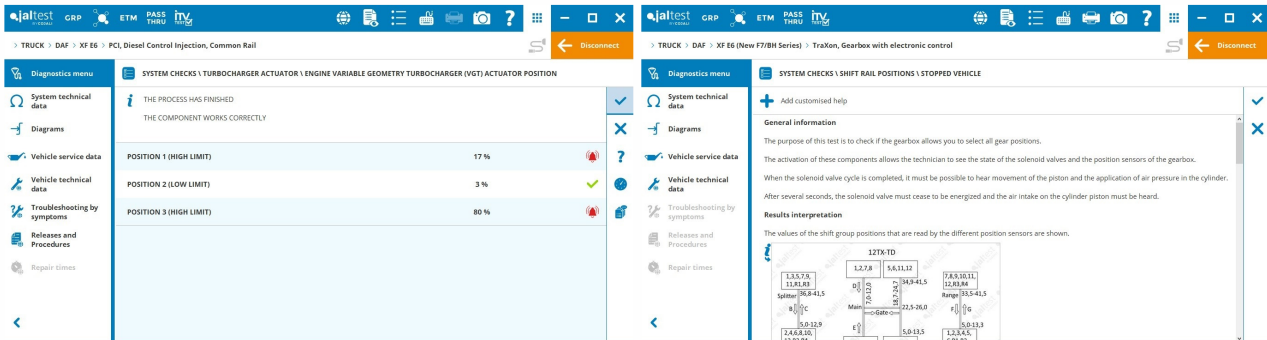


DAF

Constant update and improvement of the references and variations of the systems in DAF.

PCI engine control system, it is important to highlight the calibration procedure of the oil level sensor and the turbocharger actuator operating test.

ZF TraXon transmission, check of the shift rail positions with the vehicle stopped.



HINO

E13C engine control system, data operation reading and reset.

J08E (K line) engine control system, parameter setting of the Power Take-Off (PTO) and of the data of the amount of Particulate Matter (PM) gathered in the filter.

ISUZU

⊕ **EBS** system in **C/E Series - GIGA** models.

⊕ Instrument cluster system in **FX Series** models.

Smoother G (AMT) transmission, VIN number modification.

MAN

The system coverage of the new TG Series Euro 6 models has been extended.

⊕ **Powertrain PTX** system, extended module.

MITSUBISHI FUSO

⊕ Brake system in **Fighter** models with **6M60** engine.

EZGO hill start assist system, component activation.

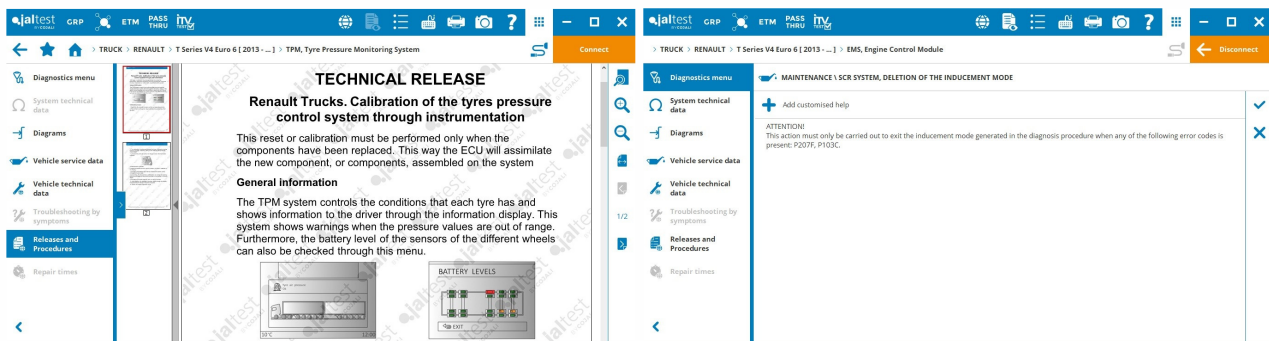
NISSAN

⊕ **ADAS** systems, **ICC** driver assistance system and camera control system where the calibration of Euro 6 models has been included.

RENAULT

Constant update and improvement of the references and variations of the systems in Renault. In models with V4 technology

⊕ **TPM** Tyre Pressure Monitoring system, that includes the calibration through the instrument cluster in a technical release.



SCANIA

Constant update and improvement of the references and variations of the systems in Scania.

UD TRUCK

⊕ **DCU** exhaust gas aftertreatment system in the **Big Thumb (GE 13 Nissan Diesel) Euro 4** model.

VOLVO

Constant update and improvement of the references and variations of the systems in Volvo.

TRAILER

BENDIX

TABS6-ADV MC brake system, check of the wheel speed sensors, activation of the modulator and the ABS lamp.

KNORR-BREMSE

TEBS Gen2 brake system, constant update and improvement of the supported references and variations.

LIGHT VEHICLES

FIAT

- ⊕ **CNG IAW 5SF4** engine control system with **F1CFA401A** engine.

GREAT WALL

- ⊕ **Delphi DCM 3.7** engine control system.

HYUNDAI

- ⊕ **Denso CRDI** engine control system in the **H-350** model with **D4CB** engine.

MAHINDRA

- ⊕ **EDC 17 C55** engine control system.

MERCEDES-BENZ

- ⊕ **CR61** engine control system in the new **Sprinter WDB907** model with **OM652** engine.
- CR41** engine control system, DPF particulate filter regeneration in the **Vito [447]** model.

NISSAN

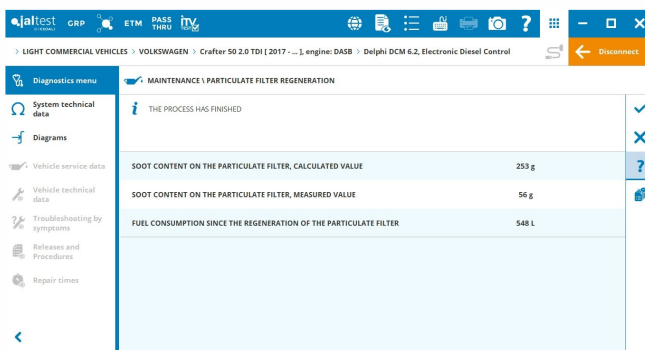
- ⊕ **EDC 17 C84** engine control system in the **NV300** model with **R9M** engine.

TATA

- CNG** engine control system in **ACE** models, component activation.

VOLKSWAGEN

- Delphi DCM 6.2** engine control system, DPF particulate filter regeneration.



TECHNICAL INFORMATION

Take into account that this document is only a summary of the most relevant information of this new version. For further information, please visit Jaltest Report.

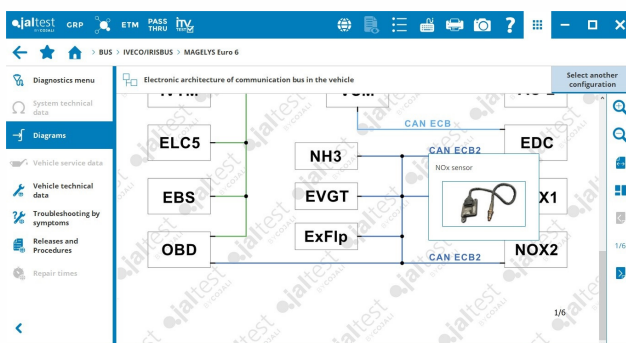
Technical and maintenance data of the vehicle

In **DAF** the maintenance services in Euro 6 vehicle have been updated relating technical data of the engine types and shortcuts to system actions.

In **MAN** and **MERCEDES-BENZ** the procedure "Replace the particulate filter" in Euro 6 models has been included. Furthermore, in **MAN**, technical data in the **D0836 Euro 5** engines are included.

Technical data have been related in the maintenance services of the R, P, G and S Series models of **SCANIA**.

Wiring diagrams and technical information



Electronic architecture of the vehicle communication bus, coverage extension of wiring diagrams of the **IVECO/ IRISBUS Urbanway** and **Magelys Euro 6** bus models.

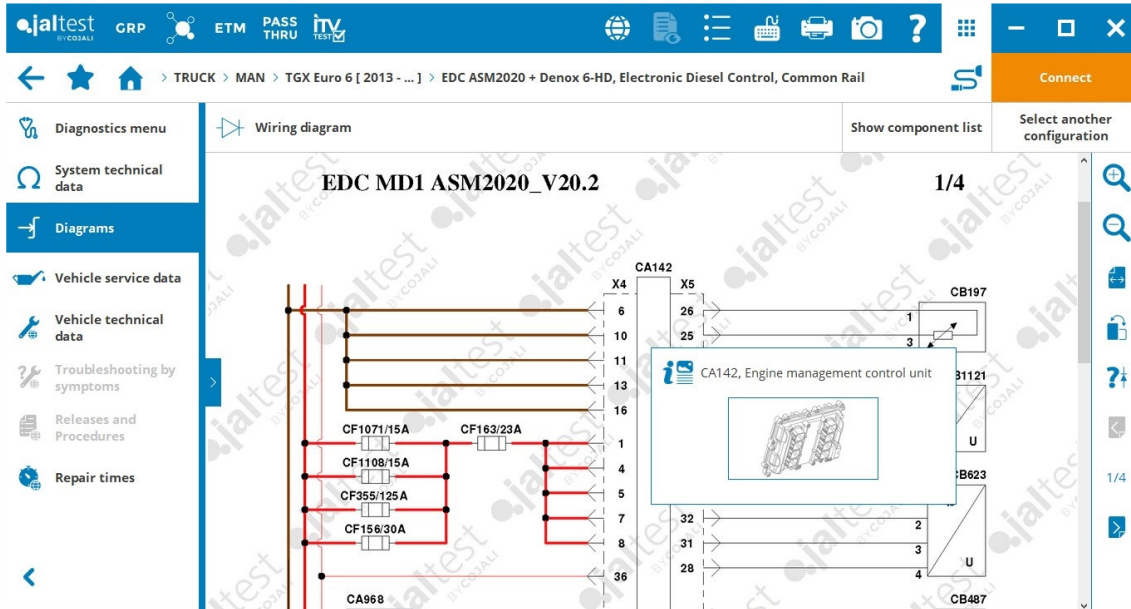
Wiring diagram of the **EDC ASM2020** engine control system of the new Euro 6D models of **MAN**.

Electronic architecture of the vehicle communication bus of the new models of **MERCEDES-BENZ Actros** and **Arocs** of generation 5.

Technical data and wiring diagram configurations in the systems of the new Euro 6D models of **SCANIA**.

Technical data and wiring diagram configurations in the **EMS CNG** engine control system of light vehicles of the **TATA** brand.

Improvement of the coverage and new wiring diagram configurations in **VOLVO** and **RENAULT** models with V4 technology.



Troubleshooting guides and procedures

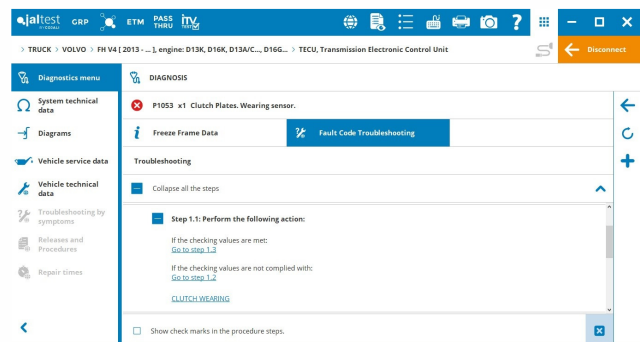
Checking procedure of the fuel pressure in **DAF Euro 5** models with **DMCI** engine control system.

Troubleshooting guides by symptom in **DAF Euro 6** models: Engine power loss, black smoke expelled by the engine, quick soot load in the particulate filter. Furthermore, troubleshooting guides associated to fault codes that limit the vehicle speed or reduce the engine power have been included in the **AdBlue/DEF EAS4 Ecofit UL2** system. Finally, it is important to highlight the checking and reset procedure of the tyre inflation pressure indication.

Troubleshooting guide by symptom and information about frequent failures in **RENAULT**. In this brand, it is important to highlight the checking procedure of fuel leaks in models with V4 technology. Also, troubleshooting guides associated to fault codes in the main systems have been included.

In **SCANIA**, troubleshooting guides and information about frequent failures have been included.

Troubleshooting guides associated to fault codes in the main exhaust gas aftertreatment systems, engine and transmission, in models with V4 technology of **VOLVO** where it is also important to highlight other procedures, such as the checking of fuel leaks or the technical release about the calibration of the **TPM** Tyre Pressure Monitoring system.



System Display

Activations from the System Display of the **VIS3** visibility system of **SCANIA**.

System Display of door control modules in **MERCEDES-BENZ** and **MAN**.

Access to System Display during the DPF particulate filter regeneration in the following systems:

- **AdBlue/DEF EAS4 Ecofit UL2** of **DAF**.
- **EDC 17 CV41 + Denox 2.2** of **IVECO**.
- **EDC 17** of **MAN**.
- **ACM** of **MERCEDES-BENZ**.
- **EMS EMD1** of **SCANIA**.
- **EMS V4** of **VOLVO** and **RENAULT**.

