



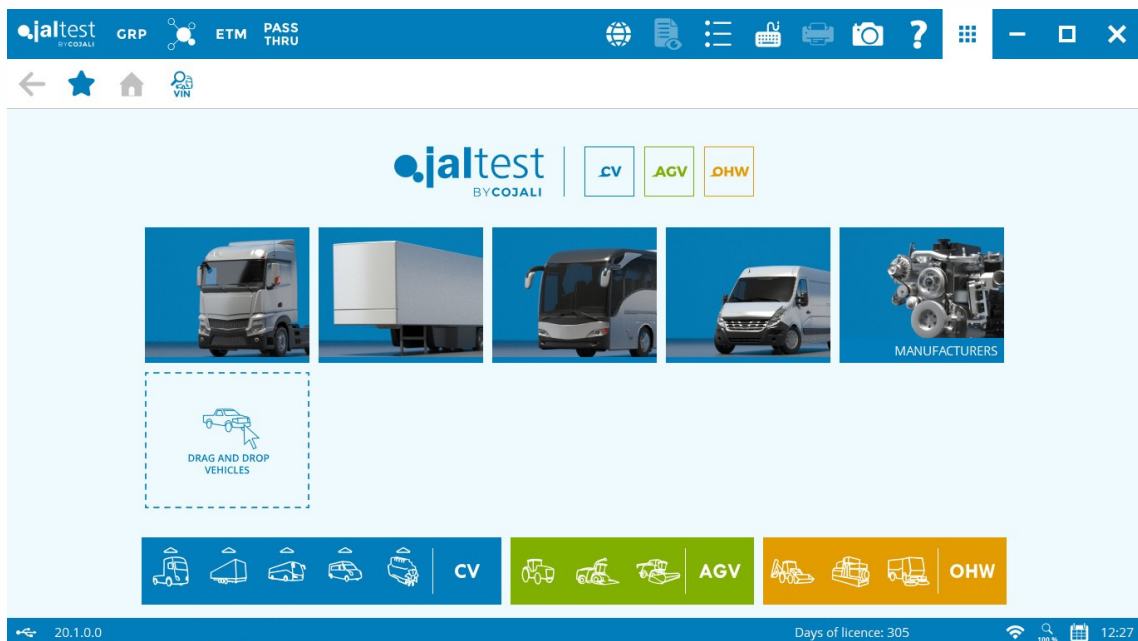
# **jaltest** **cv** COMMERCIAL VEHICLES

## INNOVATIONS 20.1

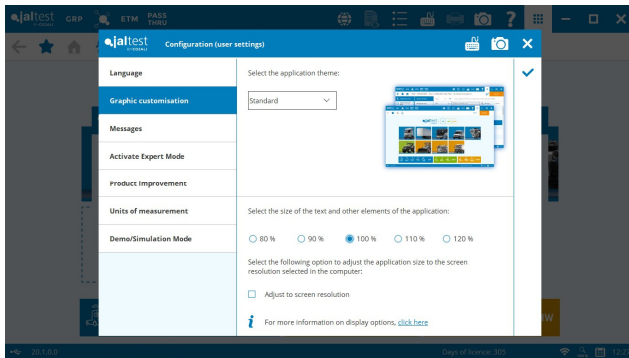
# SOFTWARE INNOVATIONS

The new software version **Jaltest 20.1** once again offers more improvements and innovations that consolidate this tool as a benchmark in **multibrand diagnosis** for commercial, agricultural and OHW (Off-Highway) vehicles.

This version shows the **new graphic interface of Jaltest**, characterised by new improved and modern design lines, more legible content and more direct accessibility. This improvement in the visualisation of the content means a great advantage for Jaltest users who can now find and manage the information in an easier and more intuitive way. Apart from these graphic changes, both the runtimes and installation times have been improved, improving in this way its speed.



Next, some examples of displays and aspects of the application, with a considerable improvement regarding the graphic interface, are shown.

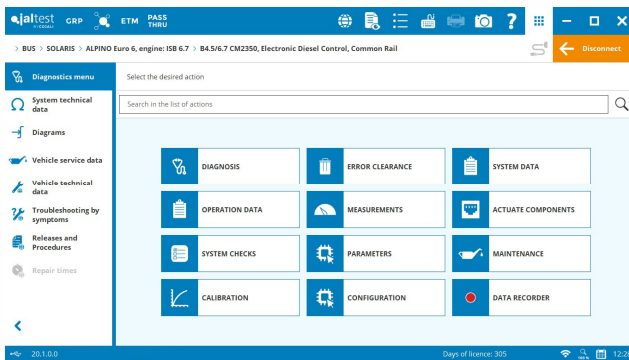
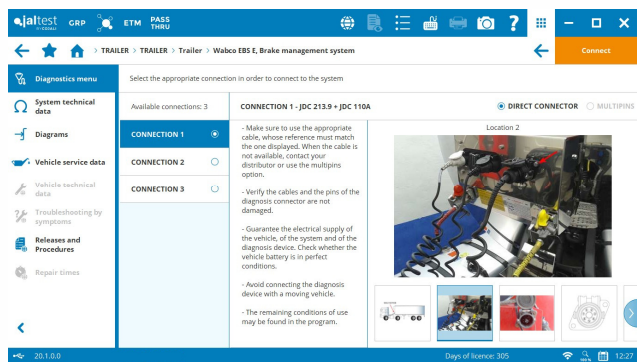


## Graphic customisation.

Configuration of the screen resolution, text size and other elements of the application. Option to adjust the application size to the resolution of the selected screen in the PC.

## Connection selection.

The connections associated to a system are listed at the left, the connection instructions remain always visible, navigating through the images is easier, etc.

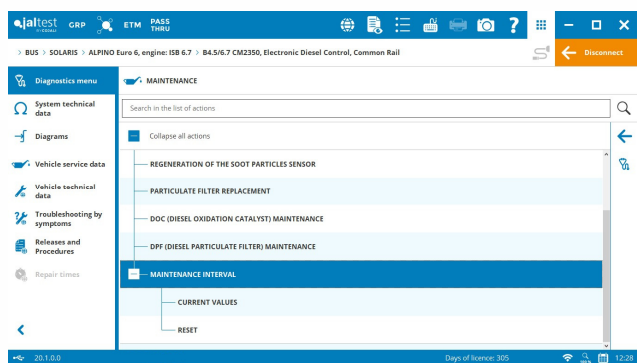


## Main menu of a system.

Classification of the main types of actions when connecting to a system, which allow you to know quickly the coverage of a system. Improvement of the action searcher.

## System actions in tree diagram.

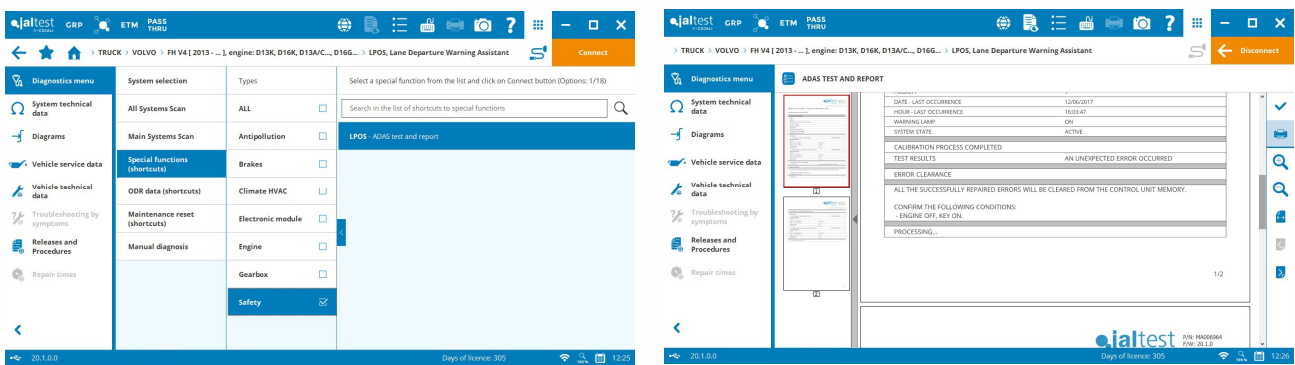
System actions organised in tree diagram and actions grouped together in folders. The "DIAGNOSIS" function is always available on the right bar through the button with the corresponding icon.



Furthermore, new software functions have been included.

## Direct accesses to ADAS test and report

This test has several parts. After showing the system data, an error reading is performed to carry out the ADAS advanced operations afterwards: calibration, reset, on-road test, etc. according to the system. Once these operations have been performed, the failure memory of the system is deleted and the errors are checked again. At the end, a report with the results will be issued.



## Other innovations

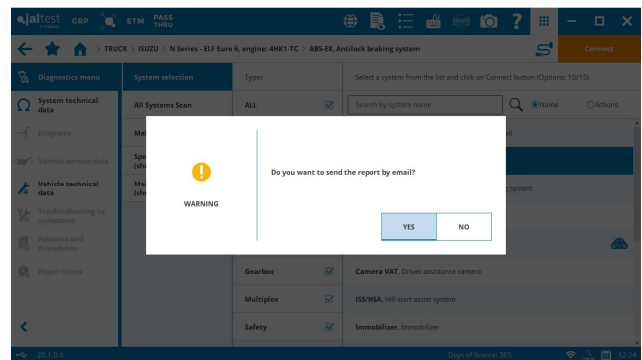
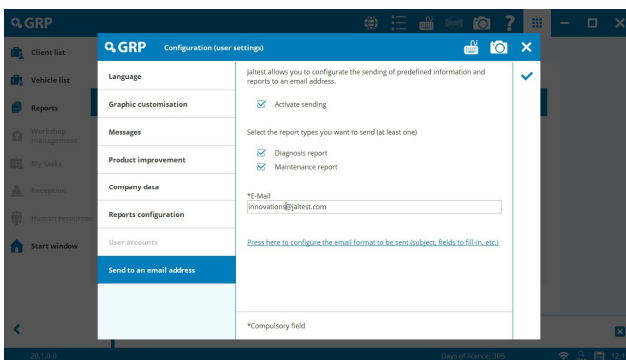
Other functionalities of the version are listed below:

- **Countdown timer** in procedure steps and troubleshooting guides.
- **Images** in repair times.
- **Search filter** in the measurement list of a step in an action.
- **Component filter** in system technical data by configuration of wiring diagram.

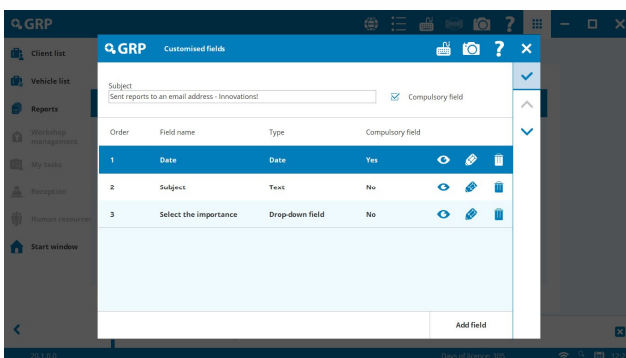
# GRP

## Sending of reports to an email address

Jaltest allows you to configure the sending of predefined information and reports to an email address through the “Send to an email address” function available in the “Configuration” menu of GRP. Once the sending has been activated, the program will suggest this possibility when generating a report. The report will be sent by an email with the configured format (subject, fields of the body of the email, etc.).



A new column for the sending management has also been included in the GRP report list. The user will be able to send reports marked as “Pending to be sent” or to resend a report.

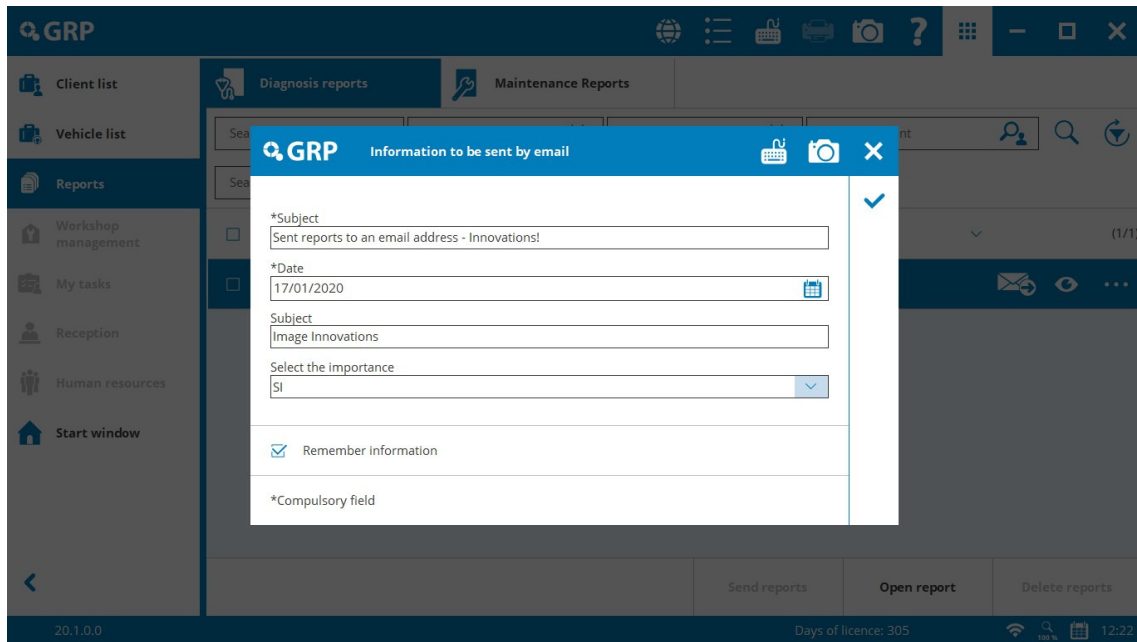


The user can customise as many fields as desired, and the email subject, as well as they can also define if they are compulsory input data or not. The field types can be as following:

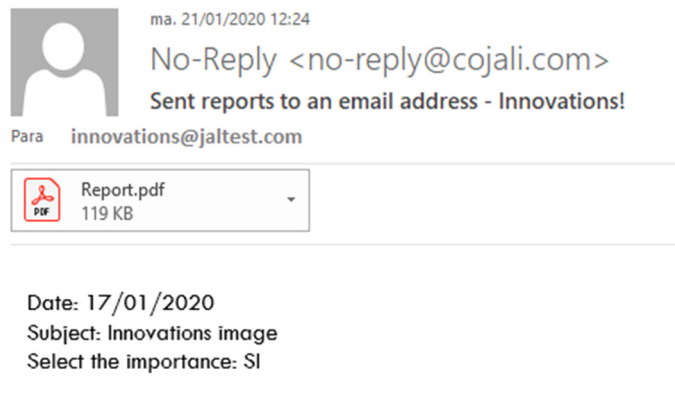
- Text
- Date
- Drop-down field

The image shows an example with three fields.

## Example, sending of a report with Jaltest:



## Received email



# BRANDS AND MODELS

---

Take into account that this document is only a summary of the most relevant information of this new version. For further information, please visit Jaltest Report.

In this version 3 new brands of bus have been included: **HINO**, **TOYOTA** and **MAHINDRA** (this latest has also been included in light commercial vehicles). New models in Jaltest are listed below.

## ASHOK LEYLAND

Light vehicle: Dost CNG

## DENNIS EAGLE

Elite 6

## EICHER

Pro 1000 Series CNG BS IV

## KAMAZ

New entry of models by engine type

## MAHINDRA

Light vehicles: Jayo and Bolero

# DIAGNOSIS AND SYSTEMS

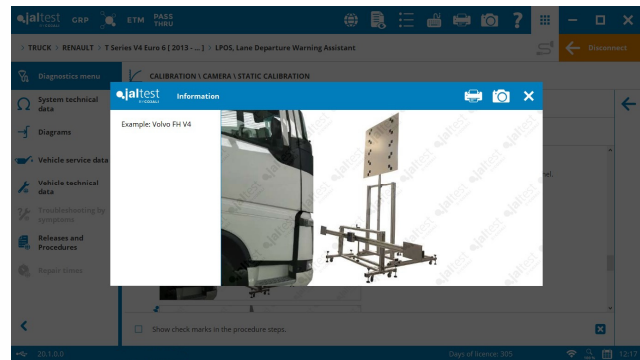
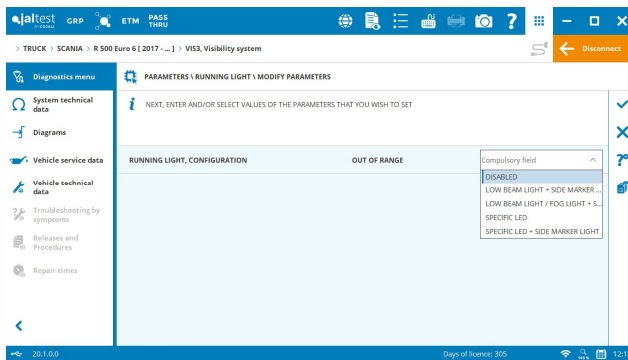
---

Take into account that this document is only a summary of the most relevant information of this new version. For further information, please visit Jaltest Report.

## OUTSTANDING DEVELOPMENTS

- **ZF TraXon** transmission calibrations in **DAF**.
- Present system scan optimised in **MERCEDES-BENZ** Euro 6 vehicles.
- Regeneration and replacement of the Diesel Particle Filter (DPF) in **Sprinter WDB 907** model.

- Parameter setting in **SCANIA** systems such as the running light configuration in the **VIS3** system or the speed limit in the **TMS2** transmission system.
- **ADAS test and report** function in models with multifunction cameras and radars, as well as new calibrations of ADAS systems, such as the static calibration of the lane detection system camera of the **LPOS** system in **RENAULT**.
- **VOLVO** transmission calibration with gearbox not installed in vehicles with V3 and V4 technologies.
- **Improvement of the coverage in buses** developing, among others, new variants of **Wabco OnGuard Plus** system, **Knorr-Bremse ELC 5** suspension system or multiplexing parameters in **Cummins** systems.



## TRUCK and BUS

### AGRALE

⊕ **DCU Tenneco** exhaust gas aftertreatment system.

### ASHOK LEYLAND

**EDC 17 C53** engine control system, parameter setting.

### BHARATBENZ

**4d34i** engine control system, parameter setting and operation data reset.

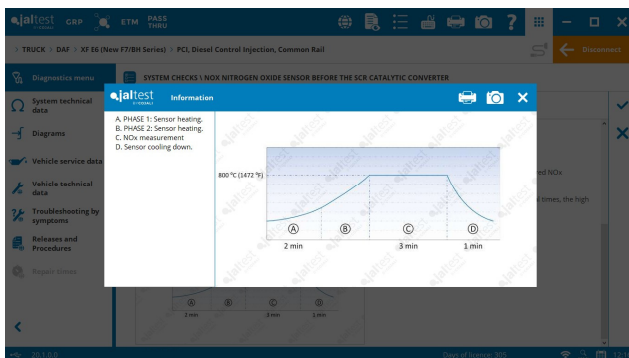
⊕ Instrument cluster in **1014**, **1214**, **1217**, **1414** and **1617** models.



## DAF

Update and improvement of the most common errors of the engine control systems, exhaust gas aftertreatment systems and transmission systems.

Freeze Frame Data (FFD) in diagnosis to systems such as the Chassis Module Front (**CMF**), Chassis Module Rear (**CMR**), Vehicle Control Unit (**VECU**) or Predictive Cruise Control (**PCC**) in Euro 6 vehicles.



**PCI UDS** engine control system, MX engine brake activation, fan clutch activation, coolant pump checking, reset functions, etc.

**EAS 4** exhaust gas aftertreatment system, operation data and particulate filter counters reset.

**ZF Intarder EST-54** system activations.

## FORD

⊕ **MTCO** and **DTCO** tachographs.

## ISUZU

⊕ **Smoother G (AMT)** transmission, suspension control system, **HVAC** and **ISS** Start-Stop system.

## IVECO

**EDC 17 CV41** engine control system, component replacement in the new system variants.

## MAN

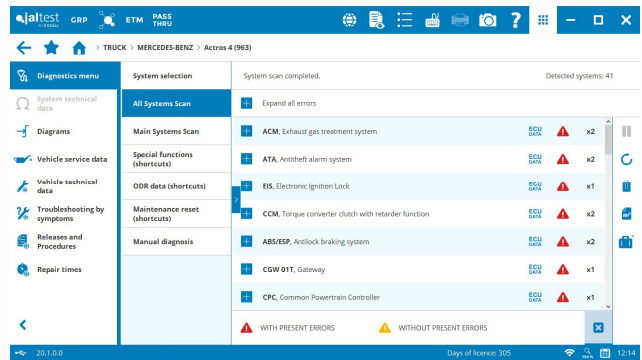
⊕ **TBM3 Stoneridge** telematic module in Euro 6 vehicles.

⊕ **ZF Ecolife 3** automatic transmission in buses.

## MERCEDES BENZ

Update and constant improvement of references and variants of Mercedes Benz systems.

⊕ **CTP** telematic platform and **SRR-R** short range radar in vehicles with **MB4** technology. The **CAN** bus parameters in **TCO** tachograph have also been developed in these vehicles.



⊕ **CLCR** suspension control system of the articulated bus.

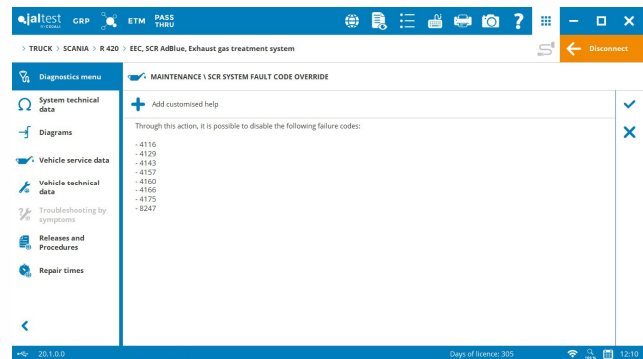
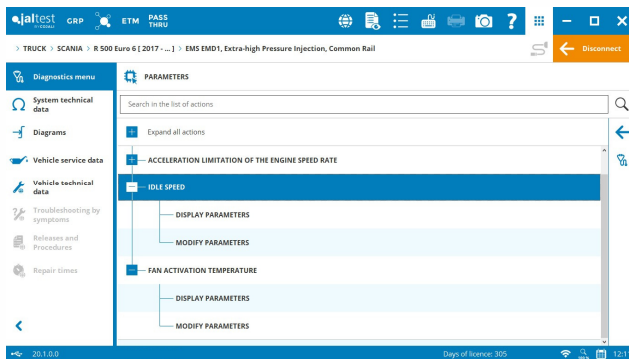
## RENAULT

Update and constant improvement of references and variants in Renault systems.

Transmission calibration with gearbox not installed in vehicles with **V3** and **V4** technologies.

**AdBlue Denox 2.1** exhaust gas aftertreatment system, modification of the vehicle identification number.

## SCANIA



Update and constant improvement of references and variants in Scania systems.

**EMS EMD1** engine control system of Euro 6 vehicles, idle speed parameters and configuration of the fan activation temperature.

**COO8** central computer, ESP system parameters.

⊕ **TSS-EST1** rear axle controller in Euro 6 vehicles.

**AdBlue Denox 1.x** exhaust gas aftertreatment system, SCR system fault code override.

## UD TRUCK

⊕ Engine control system in **Condor** models, **FE6** engine.

## VOLKSWAGEN

PowerTrain Manager (**PTM**), speed limit configuration, VIN number modification and system counter reset.

⊕ **TCU** servo-assisted gear shifting.

## VOLVO

Update and constant improvement of references and variants of Volvo systems.

ADAS test and report function in models with multifunction cameras and radars, as well as the new calibrations of ADAS systems, such as the static calibration of the lane detection system camera of the **LPOS** system.

**AdBlue Denox 2.1** exhaust gas aftertreatment system, modification of the vehicle identification number.

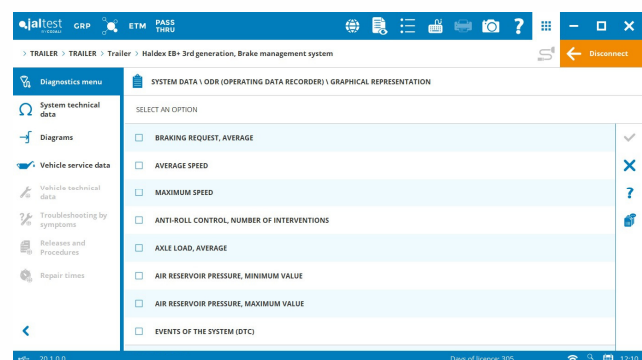
## TRAILER

### HALDEX

**EB+ 3rd Gen** brake system, improvement and development of a new graphic presentation of the Operating Data Recorder (ORD).

### KNORR-BREMSE

**TEBS Gen2** brake system, update and constant improvement of the supported references and variants.



# LIGHT VEHICLES

## ISUZU

**4JJ1** engine control system of **N Series** models, copy and paste of the injector codes.

## IVECO

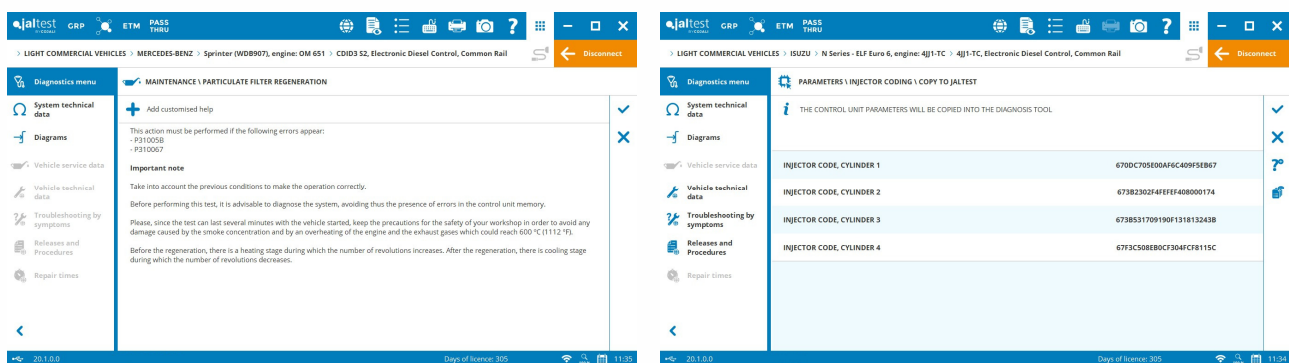
⊕ **Advanced Emergency Braking System (AEBS)** in **Daily [2016 - ...]** models where the calibration of the camera in the **Lane Departure Warning System (LDWS)** has also been developed.

## MERCEDES-BENZ

Improvement of the coverage in the new **Sprinter WDB907** model developing, among others, new reset functions in the **CDID3 S2** engine control system, maintenance data in the **IC** instrument cluster system or new systems such as the **ABA** emergency braking control system.

**CDID2** engine control system, calibration of injector zero flow rate in the **Sprinter [906]** model.

**CR41** engine control system, new reset functions in the **Vito [447]** model, where the calibration of the acceleration system of the **ESP 9** braking system has also been developed.



## PSA Groupe

**Delphi DCM 6.2** engine control system of the **CITROËN Jumper** and **PEUGEOT Boxer 2.0 Euro 6** models, checks such as the AdBlue/DEF pressure test, turbocharger test, etc.

**EDC/CR 3.5 ECO** engine control system of the **CITROËN Jumpy** and **PEUGEOT Expert 2.0** models, regeneration of the Diesel Particulate Filter (DPF), calibration of EGR and reset functions.

# TECHNICAL INFORMATION

---

Take into account that this document is only a summary of the most relevant information of this new version. For further information, please visit Jaltest Report.

## Maintenance and technical data of the vehicle

In **DAF** the “*Replace the diesel particulate filter*” procedure in **CF E6** and **XF E6** models has been included. The maintenance services of Euro 4/5 models have also been updated.

New gasoline engine types of 4.3 litres [**LU3, LV3**] and 4.8 litres [**LY2, LR4 y L20**] in **GMC/CHEVROLET**.

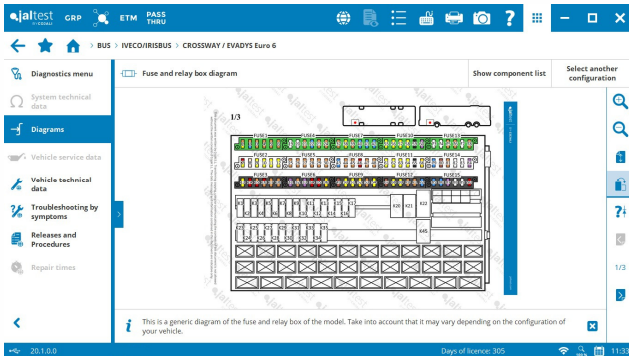
New **D2066 Euro 6** engine types in **MAN TG** models, brand in which the “Liquid capacity and quality” section has also been included in the technical data in all engine types from Euro 3.

New **OM470** and **OM471** second generation engine types of the **MERCEDES BENZ Actros 4** model.

Maintenance services of the new **SCANIA Euro 6** family models.

In **VOLVO** the “*Valve adjustment with VEB+/VEB7*” procedure has been included in **D13A, D13B** and **D13C** engines.

## Wiring diagrams and technical information



Electronic architecture of the vehicle communication bus, extension of coverage of wiring diagrams and fuse and relay box of the **IVECO/ IRISBUS Crossway** and **Evadys Euro 6** bus models

Operating diagram of the **ECC4 CNG** gas engine control system of **MAN** buses.

Fuse and relay box in **Unimog U500, U4000 and U5000** models of **MERCEDES BENZ**.

**CDID3 S2** engine control system wiring diagram of **Sprinter WDB907** models of **MERCEDES-BENZ**.

Component location images in **SCANIA Euro 6** vehicles.

Technical data and wiring diagram configurations in the **EMS CNG** engine control system of light vehicles from **TATA** brand.

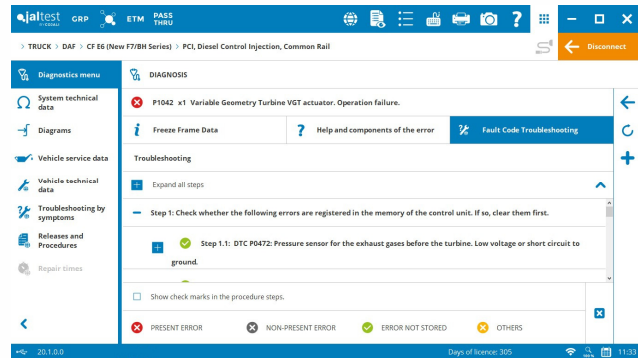
Coverage improvement and new wiring diagram configurations in **VOLVO Euro 4/5** models.

Wiring diagram configurations in the **EDC MWM** engine control system in **VOLVO VM 210, 260 and 310** models.

## Troubleshooting guides and procedures

Troubleshooting guides of error codes and procedures in actions of the **DAF PCI KWP2000**, **PCI UDS** and **ECS-DC6** engine control systems and in the **Advanced Emergency Braking System (AEBS)** in Euro 6 models.

Troubleshooting guides by symptom of **6WG1** and **6HK1** engines of **ISUZU**, as well as the **UA2 AdBlue/DEF** exhaust gas aftertreatment system.



Troubleshooting guides by symptom of **4P10** engines from **MITSUBISHI FUSO**.

Troubleshooting guides of the fault codes of the **EMS EMD1** and **EMS XPI** systems of **SCANIA**.

## System Display

**ZF TraXon**, **ZF AS Tronic**, **ZF Ecolife**, **Voith DIWA 5** and **Voith DIWA 6** transmissions.

**VIS3** visibility system and **CCS3** climate control system of **SCANIA**.

**ACM** exhaust gas aftertreatment system in **RENAULT** vehicles with **V3** and **V4** technologies.

