



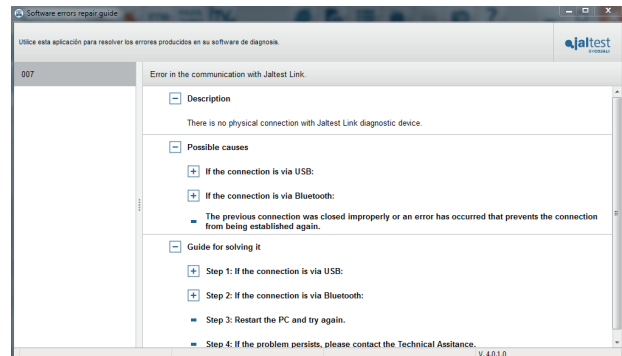
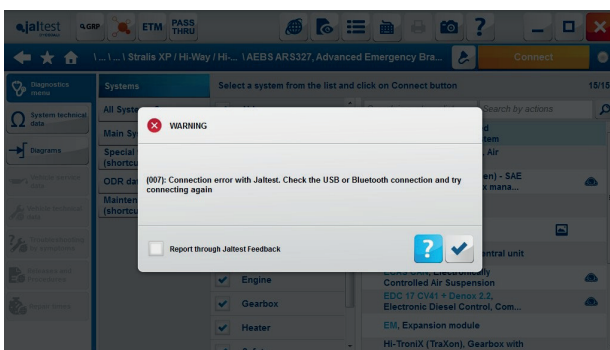
INNOVATIONS 19.1



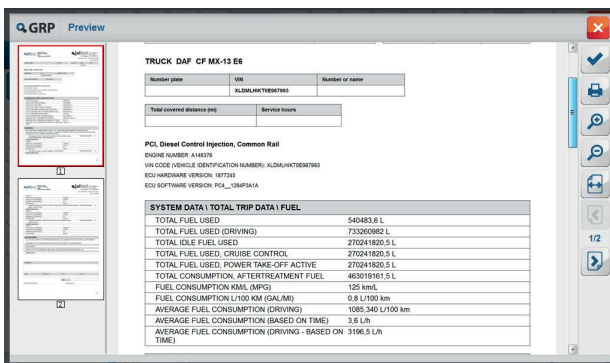
SOFTWARE INNOVATIONS

Troubleshooting guides for Software error codes

These guides contain information about the software errors 004, 006, 007, 0022, etc. The description of the error, the possible causes and a step-by-step guide to solve them have been added.



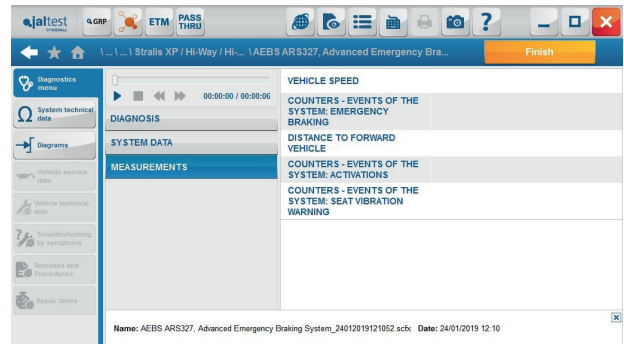
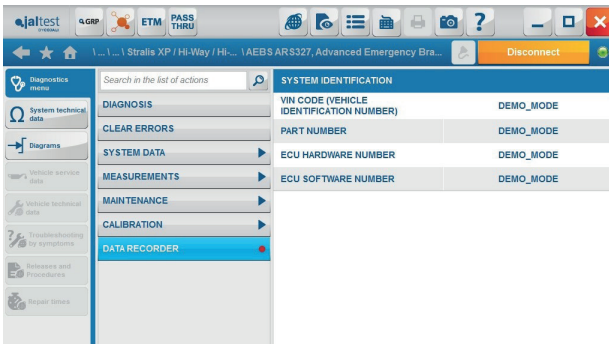
New viewer for PDF reports



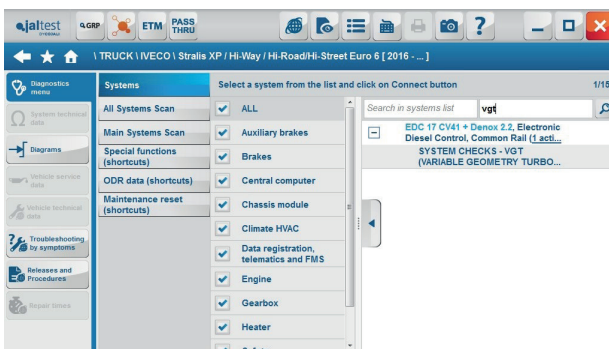
The new PDF display format of the diagnosis reports replaces and improves the previous page-by-page display format.

Data recorder and player

This function allows obtaining the diagnosis results (system errors) and the values of up to 24 measurements at most for 30 minutes continuously. The data recorder and player is ideal to evaluate dynamic errors and to perform on-road tests.



Action search function by model



This new filter facilitates the action search by model without connecting in the system.

Actions associated with maintenance services



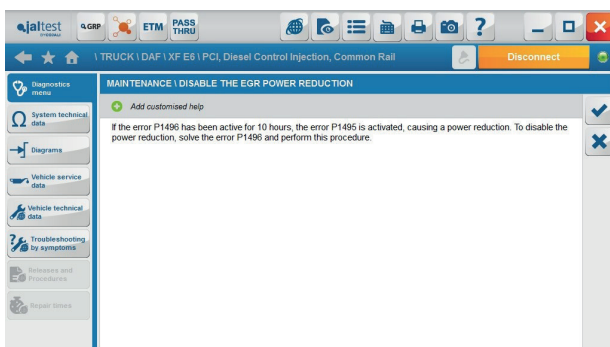
This new function allows the user to execute directly the diagnosis actions related to a particular maintenance service.

NEW DIAGNOSIS FUNCTIONS AND SYSTEMS

Take into account that this document is only a summary of the most relevant information of this new version. For further information, please visit Jaltest Report.

TRUCK AND BUSES

DAF

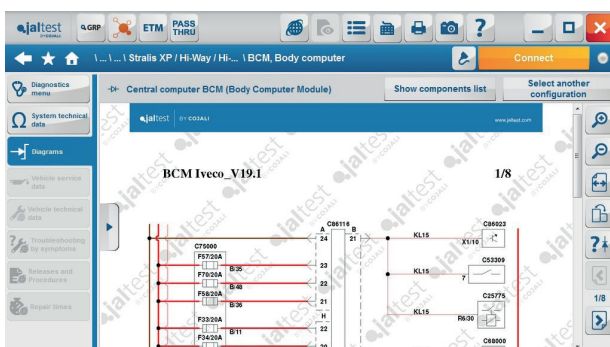


PCI KWP2000 (2013 – 2016) engine management system, MX engines, disabling of the power reduction caused by EGR error (it solves the P1495 error code).

EBS Euro Gen 3 braking system, measurements for vehicles with 3 axles.

IVECO

- + New system, central computer BCM in the New Stralis 2016 models.



Technical data of all systems in the Stralis Euro 6 models (XP, Hi-Way, X-Way, Hi-Road, Hi-Street, NP).

EDC 17 CV41 Euro 6 engine management system, new maintenances such as the replacement of catalytic converter or differential pressure sensor DPF, etc.

MAN

AdBlue Denoxtronic 2.2 exhaust gases treatment system in TGL and TGM models, system check.

MERCEDES-BENZ

Euro 6 truck models

VRDU driver assistance system, parameter setting of the lane detection system camera.



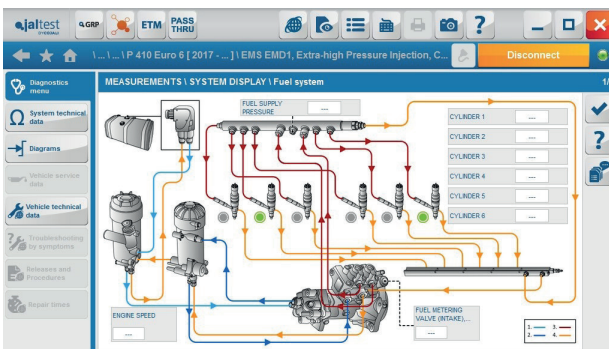
CPC 04T powertrain control system, air filter replacement.

Bus models

+ New models, CNG Citaro NGT (WEB628) and Conector NGT (WEB628.3).

GO250-8 automated gear shift, new calibration of the gearbox.

SCANIA



+ New maintenance system of the COO8 coordinator in Euro 6 models, configuration of the next service.

EMS EMD1 engine management system in Euro 6 models, operation diagram and System Display.

RENAULT

- + New maintenance system of the VMCU V4 vehicle.

EMS V4 engine management system, check of the Exhaust Gases Recirculation (EGR) and aftertreatment data record.

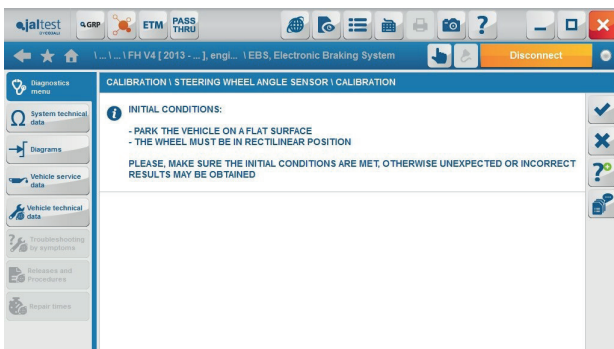
EBS V4 braking system, calibration of the yaw rate sensor and steering angle sensor.

TECU V4 transmission, new configurations of the wiring diagram.

VOLVO

EMS V4 engine management system, aftertreatment data record, etc.

EBS V4 braking system, calibrations of the yaw rate sensor and the steering angle sensor.



EMS V3 engine management system, check of the Exhaust Gases Recirculation, check of water detection in fuel (EEV vehicles), status parameters and cruise control maximum speed, speed limit change, aftertreatment data record, etc.

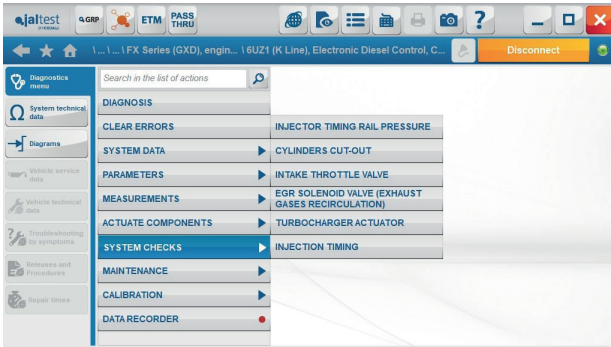
EBS V2 Gen 3 braking system, learned values reset and yaw rate sensor calibration.

ASIAN BRANDS

ISUZU

Smoother transmission (K Line) in the N Series and F Series models, parameters setting (wheel size, gear ratio, engine type, etc.).

- + New suspension systems and Smoother-G Automated Manual Transmission (AMT) in the C Series and E Series models.



6UZ1 Engine management system, regeneration and reset of the Diesel Particulate Filter (DPF), Injectors coding and cylinders cut-out.

MITSUBISHI FUSO

- + New Common Powertrain Controller (CPC) system in the Super Great model.
- + New EZGO Hill Start Assist system in models with the OM457 LA engine.
- + New MPC lane change detection system in Canter models.



MCM engine management system for 6R10 engines, regeneration of the Diesel Particulate Filter (DPF).

HINO

- + New immobiliser system in the 500 Series and Ranger models.

OTHER MANUFACTURERS

ALLISON

3000/4000 5th Gen transmissions, PTO parameters, maintenance and adaptative shift reset.

CUMMINS

Additional information to the error codes and histograms with the usage data of the engines from 2007.

B4.5/6.7 CN2350 Euro 6 engine management system, check of the DPF particulate filter status.

WABCO

EBS Euro Gen 3 braking system, brake pads wearing data.
Radar Wabco OnGuard Plus, new variants.

TRAILER

CARRIER

Vector RS232, troubleshooting guides.

HALDEX

EB+ 3rd Gen Trailer, ODR data enhancement, new histograms and trip memory.

WABCO

Trailer EBS E via CAN, ECAS suspension raising/lowering actuation, histograms and trip data in modules of the E5.3 generation.

VIGIA



+ New systems (only technical data) with wiring diagrams and calibration procedures of the pneumatic pressure.

LIGHT COMMERCIAL VEHICLES

FIAT

- + Ducato model.

Marelli 9DF UDS engine management system in Ducato models, regeneration and reset of the DPF particulate filter, injector coding and clutch reset.

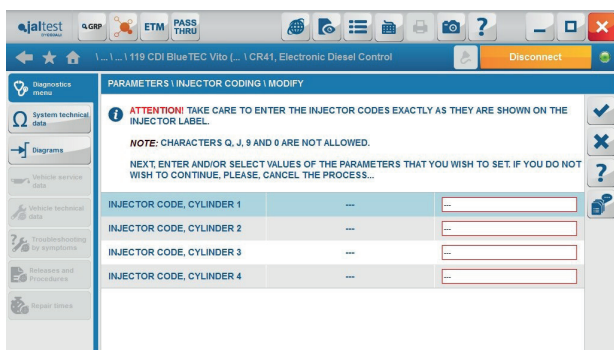
FORD

SID 211 engine management system in Transit models, reset after the component replacement.

IVECO

CNG ECM 5SF engine management system, system actuations.

MERCEDES

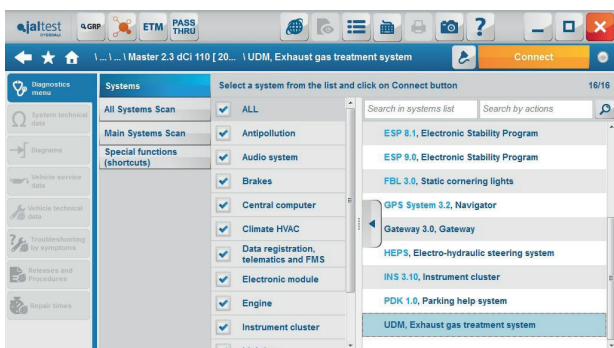


CDID3 engine management systems in Sprinter models and CR41 of Vito models with OM651 engine type, particulate filter reset and injector coding.

OPEL

ABS/ESP9.0 braking System in Movano models, sensor calibration.

RENAULT



- + New AdBlue/DEF dosing system in Master models.

VOLKSWAGEN

EDC Delphi DCM 6.2 UDS engine management system, system reset (DPF, turbocharger, air filter, DOC, EGR...).