



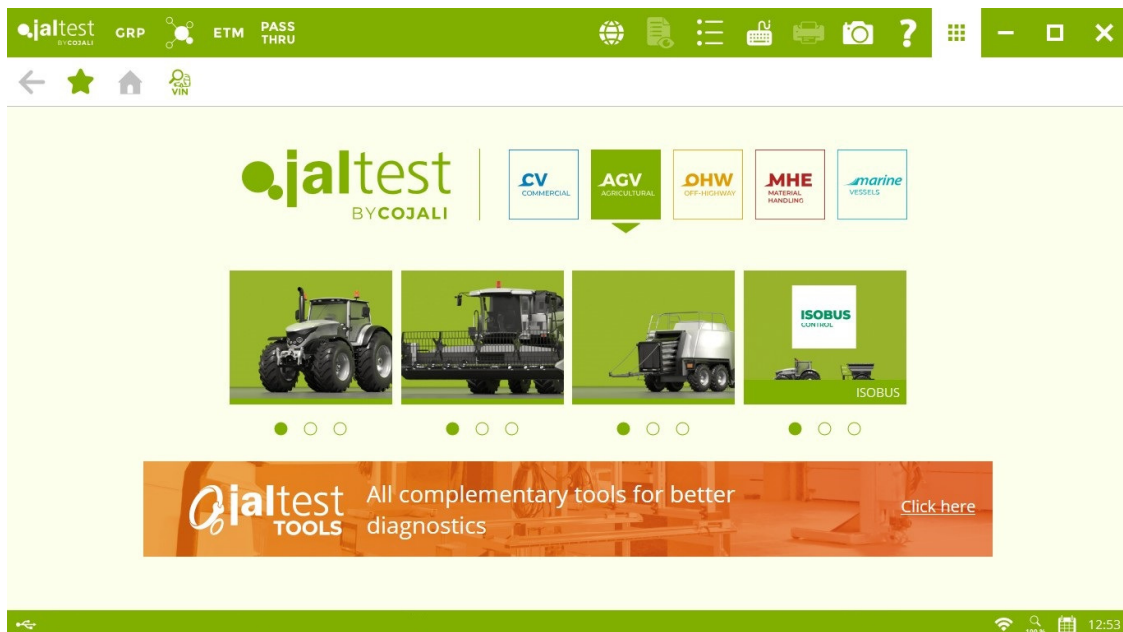
INNOVATIONS 21.2

SOFTWARE INNOVATIONS

The new software version **Jaltest 21.2** once again offers more improvements and innovations that consolidate this tool as a benchmark in **multibrand diagnosis** for commercial, agricultural and OHW (Off-Highway) vehicles, and vessels.

In this version, Jaltest changes its start window display by adding accesses to licence modules independently. Vehicles types from different groups cannot be mixed in the main window. Moreover, Jaltest includes a new module called **MHE** with coverage in material handling equipment: forklifts, boom lifts, scissor lifts, telescopic handlers, etc. and it can be purchased independently or as complement to **AGV** and/or **OHW**.

Jaltest keeps in memory the access of the last session for the next application restart.



Jaltest ADS advertising with available banners:

- **Jaltest Tools** with access to the catalogue of COJALI website.
- **Jaltest University** with access to this section of Jaltest website.
- **Jaltest Telematics** with access to the promotional video of predictive maintenance.

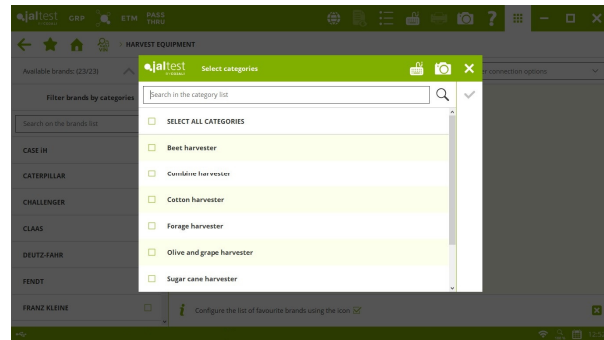
Banners change automatically and appear in any selected group **CV**, **AGV**, **OHW**, **MHE** or **MARINE**.

AGV division and filters by vehicle category

- (1) TRACTOR
- (2) HARVEST EQUIPMENT
- (3) SELF-PROPELLED AND TRAILING IMPLEMENT
- (4) ISOBUS

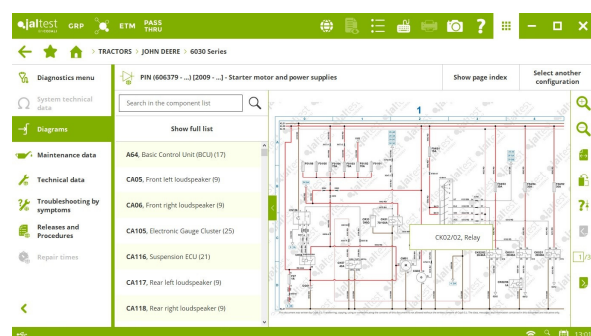
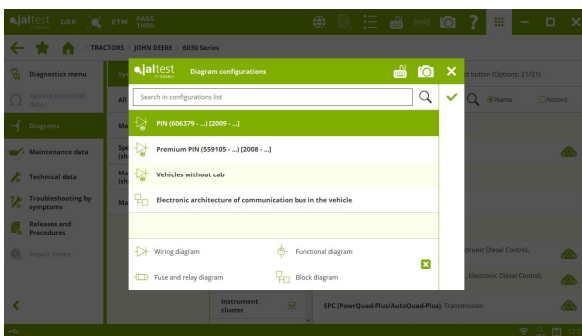
In addition, all categories of vehicles and implements have been completed. This allows the display of brands according to the selected category.

This does not mean that the brands configured as favourites are modified.



Model wiring diagrams

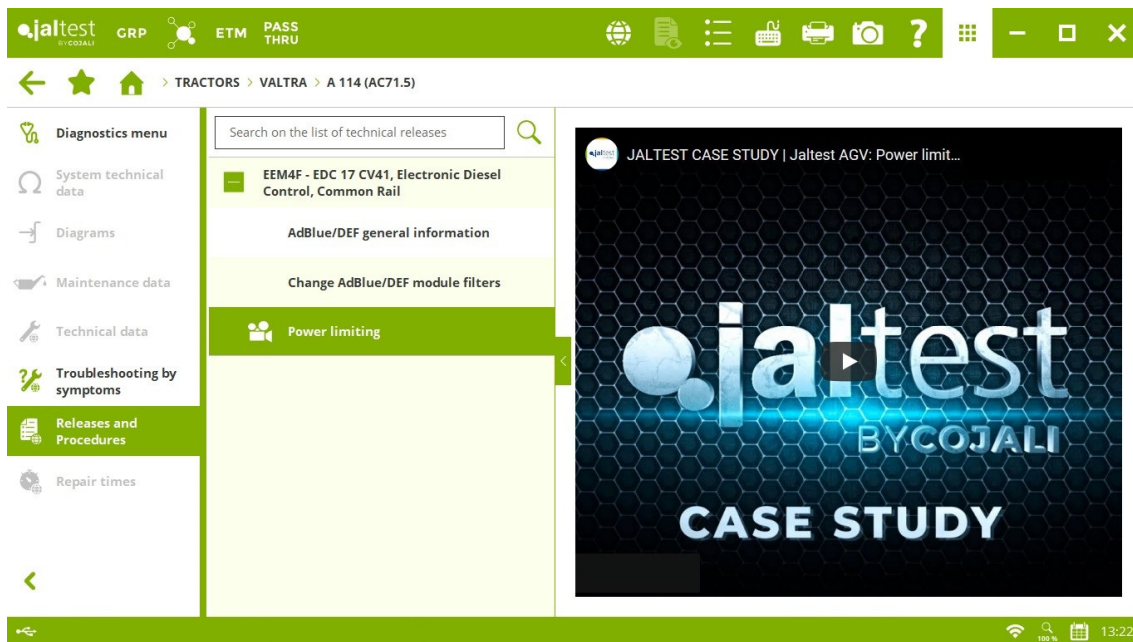
Promotional module of wiring diagrams organised by model with page index and component search. Available in John Deere 6030 Series.



Jaltest videos

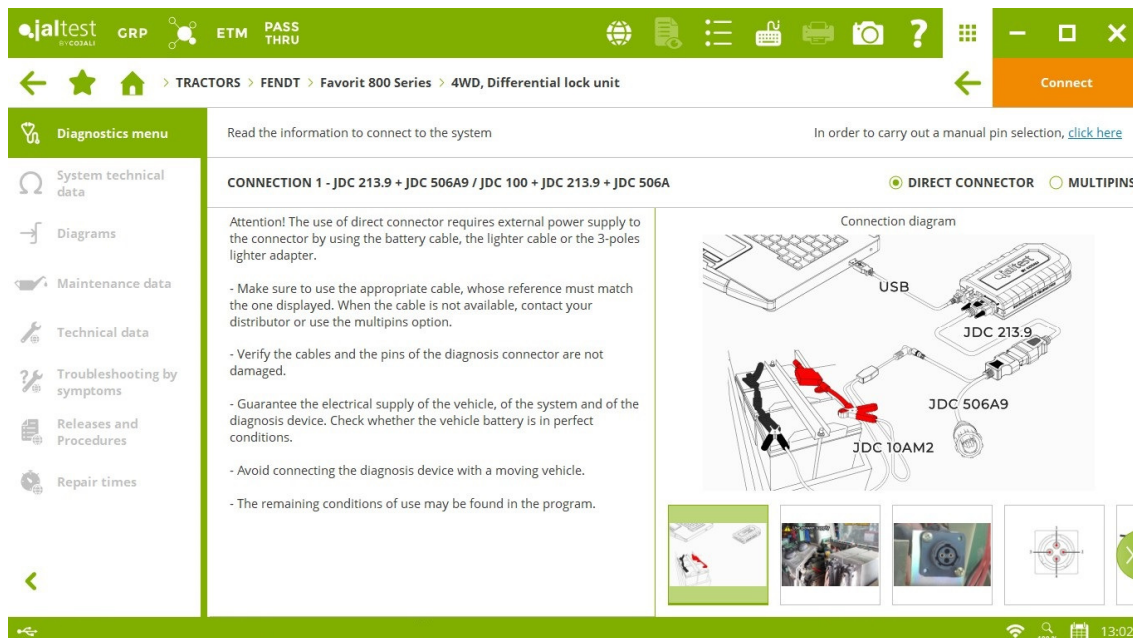
Updated Jaltest video menu with videos organised by categories. In addition, some of them have been related as procedure in the corresponding paths and models.

They can also be related to software functionalities, for example, in this version there is a video showing the use of multipins in all connections.



Moving image, connection instructions

Moving images have been included for complex Jaltest Link V9 connections in which the JDC 100 cable and external power supply must be used. Moving images for all connections of Jaltest coverage will be included the next version.

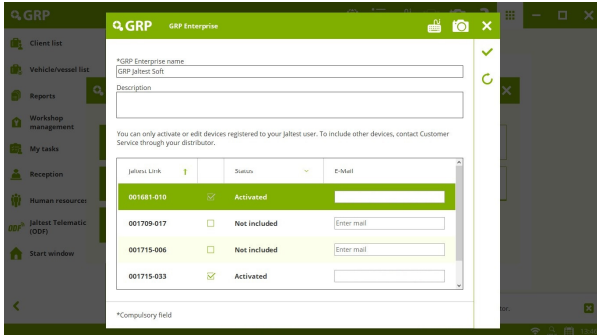


Other innovations

- Text search in troubleshooting guides and procedures.
- Full-screen display of troubleshooting guides and procedures.

GRP

GRP Enterprise management from Jaltest

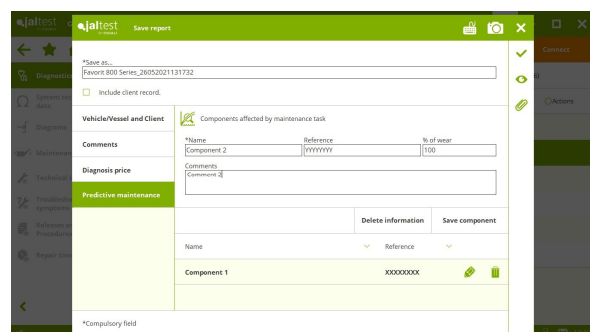
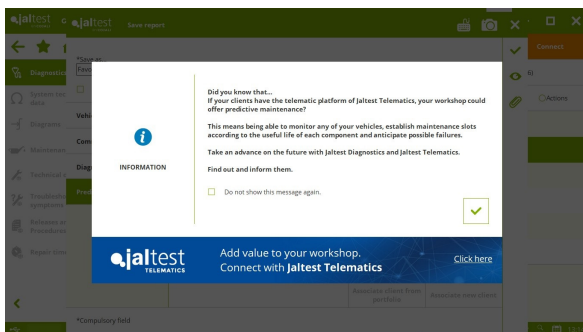


All devices registered in the same Jaltest user can create and manage GRP Enterprise directly from Jaltest.

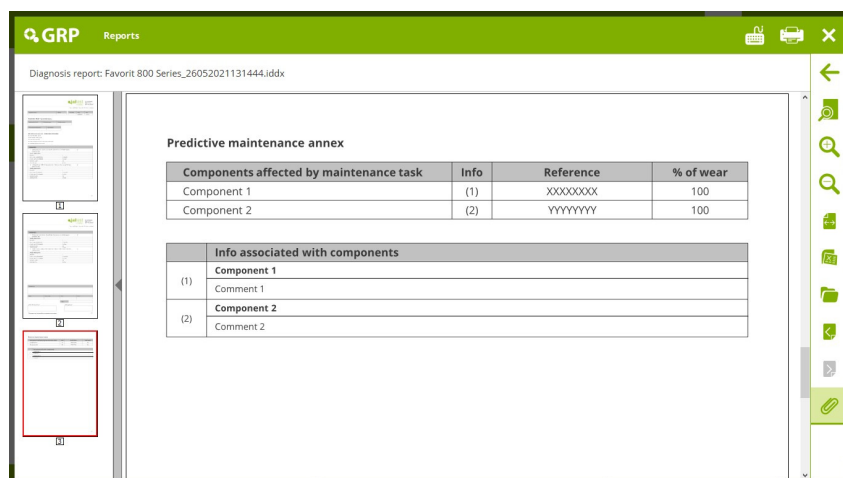
Available for Administrator users only.

New "Predictive Maintenance" tab in reports

It is possible to include the components affected by the repair or maintenance task in reports, which are listed by name and reference. Also, it is possible to include a comment and the wearing percentage. If this new tab is filled in, it contributes to Jaltest predictive maintenance and Jaltest Telematics is advertised.



The diagnosis and/or maintenance report has all the information in an Annex.



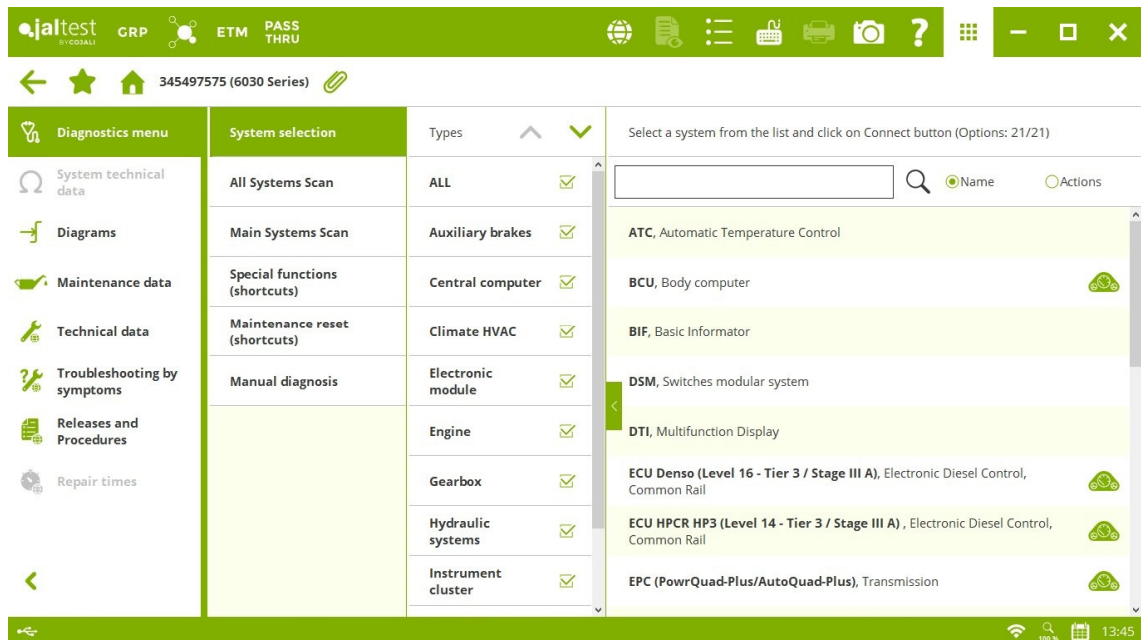
Other innovations

- Files in maintenance reports can be attached (All GRP levels).
- Multiple clients and vehicles can be selected for the next functions:

Deletion
Export

Also, the forms have more columns and new filters.

- The GRP form printing is improved.
- The vehicle documentation is available from the diagnosis menu.



BRANDS AND MODELS

Take into account that this document is only a summary of the most relevant information of this new version. For further information, please visit Jaltest Report.

TRACTOR

In this version the following brands in tractor have been included: **BASAK** and **FOTON LOVOL**. Some of the new models in Jaltest are listed below.

CASE IH

Farmall A Series

Farmall U Series (TMR), engine: Final Tier 4/Stage IV

Puma Series - 18/19x6 Semi Power Shift (TMR), engine: Final Tier 4/Stage IV

CLAAS

Nexos

FENDT

900 Vario Series (GEN6), engine: MAN, Final Tier 4 / Stage IV

JCB

Fastrac 3000 Series, engine: Final Tier 4 / Stage IV

Fastrac Early 2000 Series, engine: Tier 3 / Stage III

LANDINI

7 Robo-six Series, engine: Tier 5 / Stage V

Rex 3 Series, engine: Interim Tier 4/Stage IIIB

Trekker Series, engine: Interim Tier 4/Stage IIIB

MASSEY FERGUSON

7200 Series

McCORMICK

X7.6 P6-Drive Series, engine: Tier 5 / Stage V

TX Series, engine: Interim Tier 4/Stage IIIB

NEW HOLLAND

TD4 F Series

T5 Series - Electro Command, engine: Final Tier 4 / Stage IV

STEYR

Kompakt S Series

VALPADANA

7000 Series

9000 Series

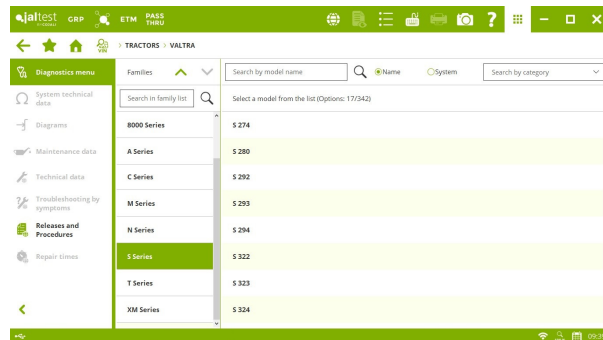
VALTRA

S4 Series

N 101HCR (AC10.2)

N Series (AC36.61)

T Series (AC37.6)



HARVEST EQUIPMENT

JOHN DEERE

S700

KUBOTA

R325

MASSEY FERGUSON

569X Series

989X Series

NEW HOLLAND

7000 Series, engine: Final Tier 4 / Stage IV

9000 Series, engine: Tier 5 / Stage V

SELF-PROPELLED AND TRAILING IMPLEMENT

New MILLER brand.

DIAGNOSIS AND SYSTEMS

Take into account that this document is only a summary of the most relevant information of this new version. For further information, please visit Jaltest Report.

TRACTOR

CASE IH

- ⊕ **VCT** transmission for **DCT** models.
- ⊕ **ADIC** instrument cluster in models with **Final Tier 4** and **Tier 5** engines.

TCU2 transmission, calibration for **Luxxum** models.

REHR remote hydraulic controller system, parameter configuration for **Maxxum** models.

FENDT

- ⊕ **EDC 17 CV42** engine control system for **900 Gen 6** and **1000 Vario** models.
- ⊕ **EOL** vehicle configuration for several models:
 - 900 Vario Series, engine: Tier 3 / Stage 3
 - 500 Vario Series (Profi/ProfiPlus), engine: Final Tier 4 /Stage IV
 - 500 Vario Series (Power/PowerPlus), engine: Interim Tier 4/Stage IIIB

TA22 Caterpillar transmission, calibration.

GTR transmission, calibration data reading.

JOHN DEERE

- ⊕ **ECU HPCR (Level 25)** engine control system in **Interim Tier 4/Stage III B** engines for **8R Series** models.

SSU steering control system, calibrations for 6030 Series models.

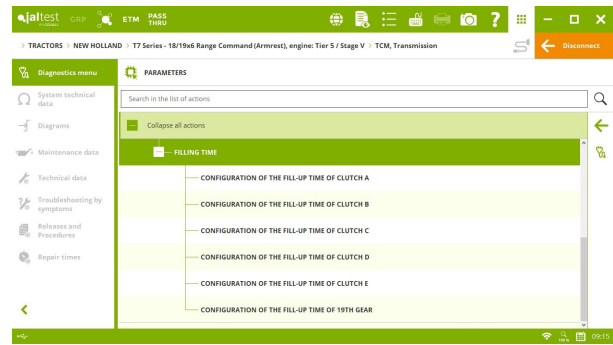
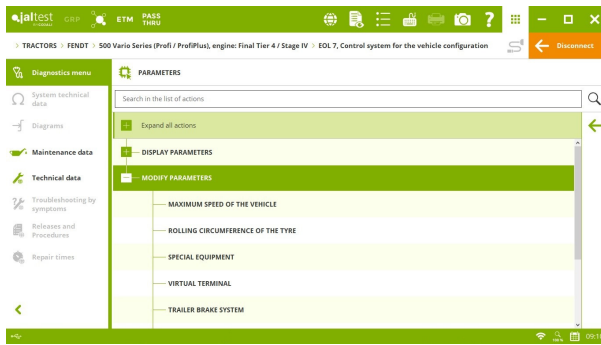
KUBOTA

ACU exhaust gas aftertreatment system, checks and maintenance such as the inducement mode check.

NEW HOLLAND

- ⊕ **TCM** transmission for **Tier 5** models.
- ⊕ **ADIC** instrument cluster in models with **Final Tier 4** and **Tier 5** engines.

REHR hydraulic controller, parameter configuration for **T6 Series** models.



STEYR

⊕ **VCT** transmission for **DCT** models.

TCU2 transmission, calibration for **MULTI Series** models.

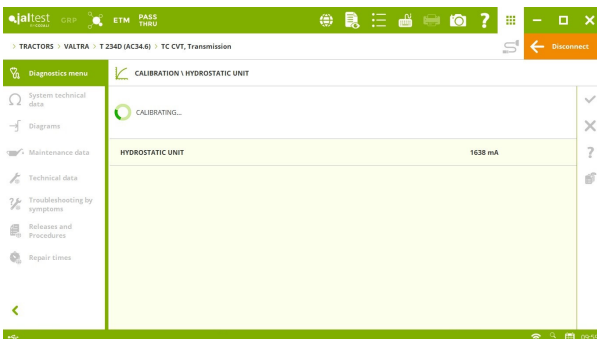
VALTRA

⊕ **DCC3** instrument cluster.

⊕ **Auto 5** hydraulic lift.

⊕ **TC CVT** transmission.

New systems for **S2** and **S3** models. And new functionalities have been developed in **AC 3X.XX** models:



TC transmission, calibrations.

TC CVT transmission, hydrostatic unit calibrations, gear position sensor calibration, clutch calibration, etc.

EHR hydraulic system, rear lift calibration.

VERSATILE

TA19/TA22 Caterpillar transmission, calibration.

HARVEST EQUIPMENT

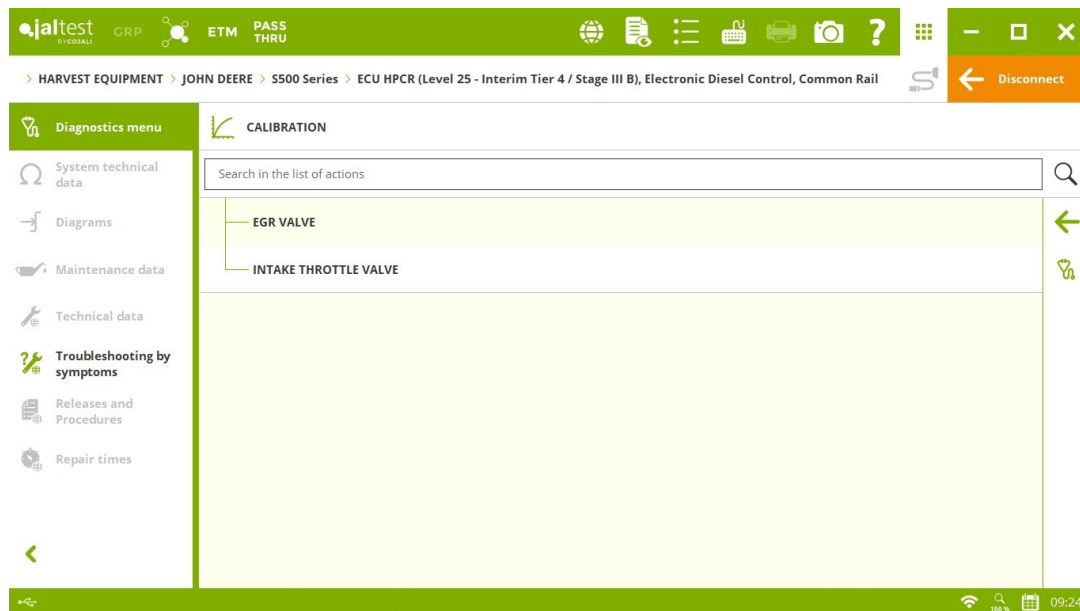
CLAAS

⊕ **GGs** shear bar control system for **Jaguar** models.

⊕ **CAB** instrument cluster for **Jaguar** models.

JOHN DEERE

- ⊕ **ECU HPCR (Level 25)** engine control system in Interim Tier 4/Stage III B engines for **S500** models.



ENGINE CONTROL SYSTEM AND EXHAUST GAS AFTERTREATMENT SYSTEM

CATERPILLAR

Models with **C-4.4/C-6.6** engines that communicate through SAE J1939 protocol, injection rail pressure check, cooling system check and high-pressure pump calibration.

CUMMINS

- ⊕ **B6.7** engine control system in **KUBOTA M8** and **CLAAS** harvester models.
- ⊕ **QSX 11.9/15 CM2250** engine control system installed, for example, in **ROSTSELMASH** harvesters.

DEUTZ

Extended coverage of compatibility codes in **EDC 17 CV52** and **EDC 17 CV54** engine control systems.

EMR4 - EDC 17 CV52 engine control system in engines with CRT technology, diesel particulate filter replacement and diesel particulate filter soot content reset.

MAN

⊕ **EDC 17 CV42** engine control system.

PERKINS

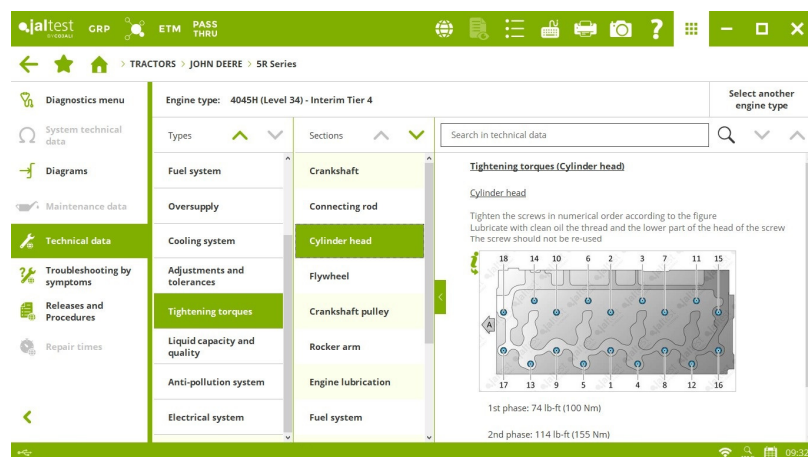
ISEKI, LANDINI, LINDNER, URSUS, WEIDERMANN, etc. brands.

1204E, 1204F/1206F engine control system that communicates through SAE J1939 protocol, diesel particulate filter regeneration operation test, injection rail pressure test and cooling system check.

TECHNICAL INFORMATION

Technical and maintenance data of the vehicle

Engine technical data in **CASE iH, CLAAS, DEUTZ-FAHR, FENDT, JOHN DEERE, KUBOTA, MASSEY FERGUSON, NEW HOLLAND** and **STEYR**.

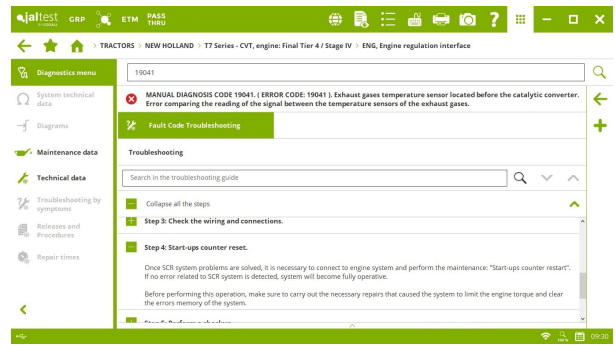
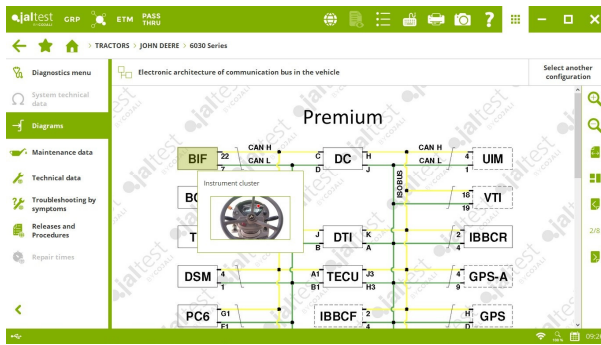


Wiring diagrams and technical information

Wiring diagrams and technical information updated on systems from brands such as **CASE iH, DEUTZ-FAHR, HÜRLIMANN, JOHN DEERE, KUBOTA, LAMBORGHINI, LANDINI**.

Troubleshooting guides and procedures

Troubleshooting guides and procedures in **CASE iH, JOHN DEERE, NEW HOLLAND** and **STEYR**.



System Display

System Display in the most important systems of numerous brands.

