



INNOVATIONS 20.3

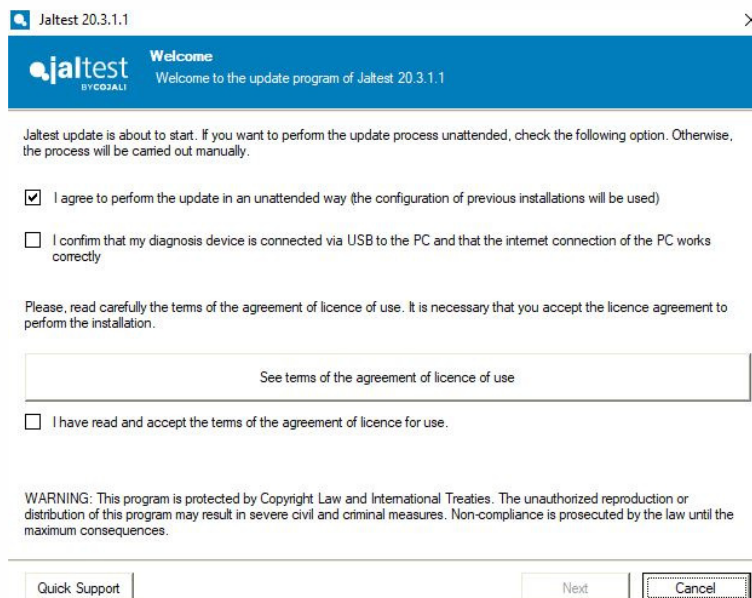
SOFTWARE INNOVATIONS

The new software version **Jaltest 20.3** once again offers more improvements and innovations that consolidate this tool as a benchmark in **multibrand diagnosis** for commercial, agricultural and OHW (Off-Highway) vehicles.

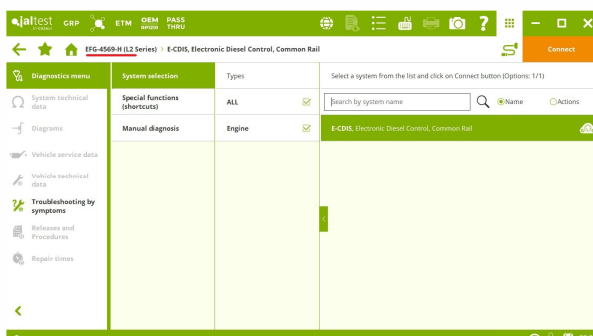
Next, the most relevant software innovations are shown.

Update process without user intervention

The update process without user intervention is based on the configuration of previous installations.



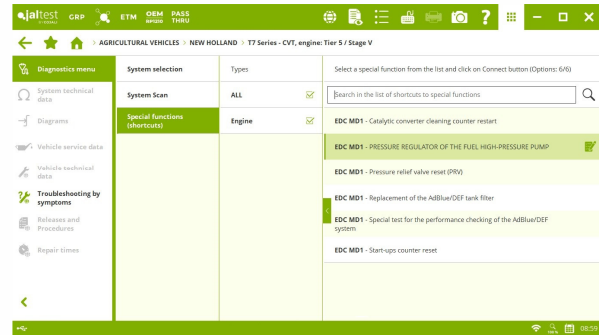
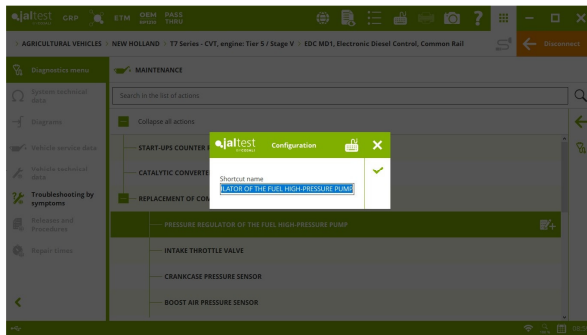
Vehicle data in the selection path



The number plate appears in the model selection path with accesses to the vehicle from GRP or from the vehicle browser.

Shortcuts to special functions

When completing an action of a system (only if it has been carried out), the user can include it in the shortcut menu and customise the shortcut list to special functions.



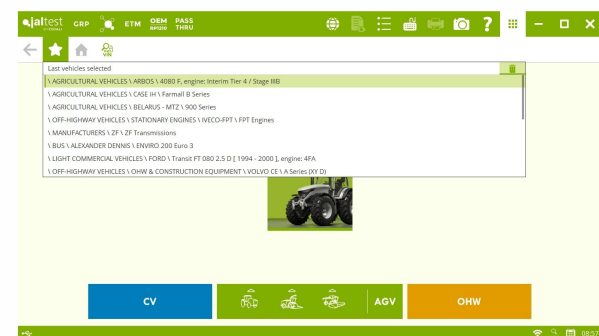
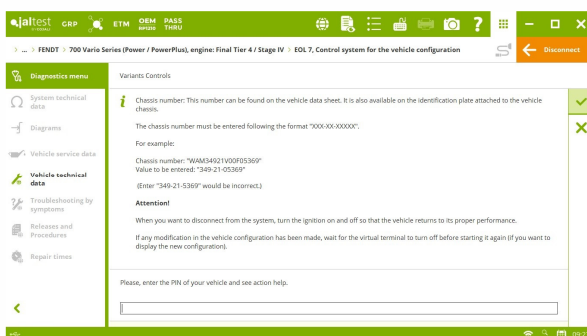
Others

Browser of the model families. A search filter has been included in the display form of the brand model list.

Display of the variant helps in the same form. The selection or edition helps of variants can be displayed in the same form. Users do not need to access through INFO button but they appear directly in the same edition or selection form of variant.

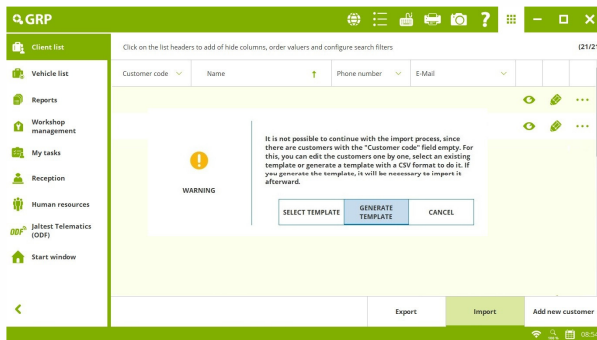
Edition of the table column size. The width of the table columns can be modified in the course of an action allowing the user to display better the data shown.

Deletion of the last diagnosed vehicle record.



GRP

Export/Import client list



It is possible to export/import the client list through Excel or CSV files quickly and easily. This allows the user to share the clients created in Jaltest with others from other platform or ERP of their company, and vice versa.

To do this, a new compulsory and single field called “Customer Code” has been created for each client. This field must be completed before using this function. When clicking on “Import” button, the programme will advise the user about it providing them with a template so that they can fill out this field previously for all their current clients in GRP.

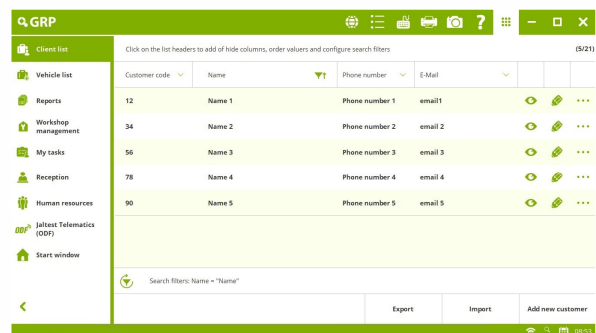
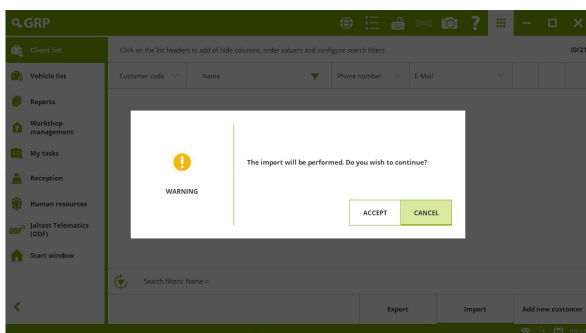
completed before using this function. When clicking on “Import” button, the programme will advise the user about it providing them with a template so that they can fill out this field previously for all their current clients in GRP.

If the client list in GRP is empty, first of all, “Export” function should be used to create a template where table headers are generated. It is important not to modify the header value or column position of the table.

	A	B	C	D	E	F	G	H	I	J	K
1	Customer Code	Name	VAT No.	Address	City	Postal code	Province	Country	Phone number	Fax	email
2	31	Name 1	CIF 1	Address 1	City 1	Postal code 1	Province 1	Country 1	Phone number 1	Fax 1	email 1
3	23	Name 2	CIF 2	Address 2	City 2	Postal code 2	Province 2	Country 2	Phone number 2	Fax 2	email 2
4	45	Name 3	CIF 3	Address 3	City 3	Postal code 3	Province 3	Country 3	Phone number 3	Fax 3	email 3
5	67	Name 4	CIF 4	Address 4	City 4	Postal code 4	Province 4	Country 4	Phone number 4	Fax 4	email 4
6	89	Name 5	CIF 5	Address 5	City 5	Postal code 5	Province 5	Country 5	Phone number 5	Fax 5	email 5

If clients in GRP already exist, “Export” function should be used to export an empty template or the template with data of the

current clients. In this way, it is possible to update the data from them. By using these templates and creating data in the table, the user can already import all the clients of their ERP and keep GRP up to date in Jaltest.



Improvement of client and vehicle list forms

Possibility of showing more columns in the vehicle and client lists, show/hide columns function, possibility of ordering new filters, etc.

Price/Hour by user

The possibility of defining a Price/Hour for each user in GRP allows the user to create diagnosis and repair order reports with more accurate data. If a Price/Hour is not defined for each user, the one defined in the Configuration menu (user settings)> Company data will be used.

GRP
User account edition

Id	*First Name	*Surnames	
2	Clark	Miller	
E-Mail	Price / Hour		
	0		
*User	*User type		
clark	<div style="display: flex; align-items: center;"> Service manager ▼ </div>		

You must click on the following button only if you want to reset the password.

Next, you will receive an email with a temporary password, please, follow the indicated instructions.

Reset password

*Compulsory field

✓

BRANDS AND MODELS

In this version the following new brands in agricultural vehicles have been included: **AMAZONE, ANTONIO CARRARO, FARMTRAC, KUHN, KVERNELAND, MAZZOTI, STORTI** and **YANMAR**. New models in Jaltest are listed below.

ARBOS

4060 F PRO, 4080 F PRO and 4080 F, engine: Interim Tier 4/ Stage IIIB

CARRARO

Compact Series, engine: Tier 5/ Stage V
Frutteto Series, engine: Interim Tier 4/Stage IIIB
Passepartout 90, engine: Tier 3 / Stage III
Vigneto Series, engine: Interim Tier 4/ Stage IIIB

CASE IH

Axial-Flow 7250/8250/9250 Series
Puma Series - CVT, engine: Tier 5/ Stage V

CLAAS

Scorpion Series, engine: Final Tier 4/ Stage IV
Torion Series

DEUTZ-FAHR

4 E Series
4 W Series
5 DV/DS/DF Series
5 K F/M Series
6 W Series
Agroclimber Series
Agroplus F Keyline

FARESIN

VPS Series

FENDT

E Series
Rogator Series
IDEAL Series

ISEKI

HC 1150
HJ Series
TJA Series
TJV Series
TJW Series
TJX Series

JOHN DEERE

W200 Series
9000 Series

KUBOTA

DC Series
ER Series
L1 Series
M8 Series
MGE Series
PRO Series
WR Series

LANDINI

5H Series [2012 - 2015], engine: Interim Tier 4 / Stage IIIB

MASSEY FERGUSON

3700 AL Series
IDEAL Series

McCormick

X50m Series [2012 - 2015], engine: Interim Tier 4/Stage IIIB - Final Tier 4/Stage IV

NEW HOLLAND

T7 Series - CVT, engine: Tier 5 / Stage V

SAME

Dorado Natural Series

Explorer TB Series

Frutteto 3 Series

Frutteto CVT Series

Krypton 3 SIX Series

Laser Series

STEYR

CVT Series, engine: Tier 5 / Stage V

VALTRA

N 134A (AC37.5)

N 154EA (AC37.0)

N 174A (AC37.5)

T 174EA (AC37.5)

T 191H (AC10.2)

T 194A (AC37.5)

T 234A (AC37.5)

WEIDERMANN

1500 Series

9000 Series

DIAGNOSIS AND SYSTEMS

Take into account that this document is only a summary of the most relevant information of this new version. For further information, please visit Jaltest Report.

CASE IH

⊕ **UCM 1, UCM 2** and **UCM3** electronic control modules of harvest system.

TCM CVT/TCU 1 transmission, parameters such as the sensitivity adjustment on transmission when turning on the ignition.

CHALLENGER

⊕ **MCM** central computer from **Caterpillar**.

CLAAS

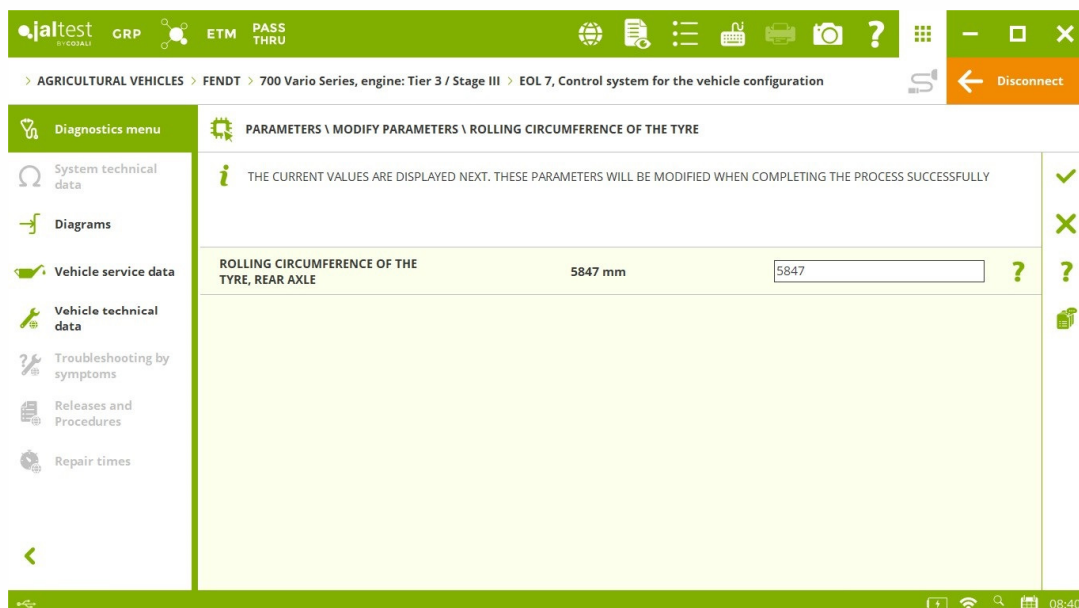
REH hydraulic lift, lift calibration.

DEUTZ-FAHR

⊕ **HYDRAULICS** hydraulic lift.

FENDT

⊕ **EOL 7** vehicle configuration system for **Tier 3** engines.



JOHN DEERE

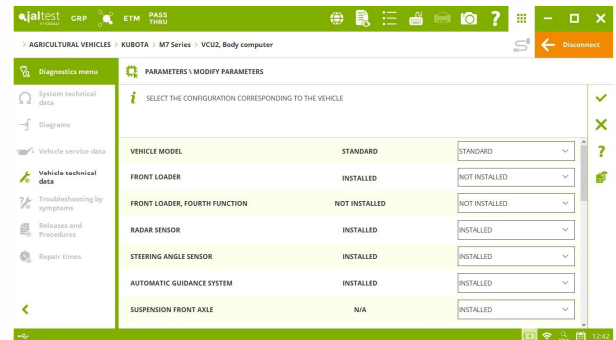
SCO remote hydraulic controller system, parameter setting of the spool valve identification codes for **Final Tier 4** and **Tier 5** engines.

KUBOTA

- ⊕ **ARU** armrest control system.
- ⊕ **VDC, TCU-PST** and **TCU-KVT** transmissions.

VCU1 central computer, parking brake angle calibration.

VCU2 central computer, parameter modification.



LANDINI

EHR hydraulic lift, parameter modification and lift calibration.

CC cabin module, cabin suspension calibration.

Sauer Danfoss transmission, clutch pedal calibration and transmission calibration.

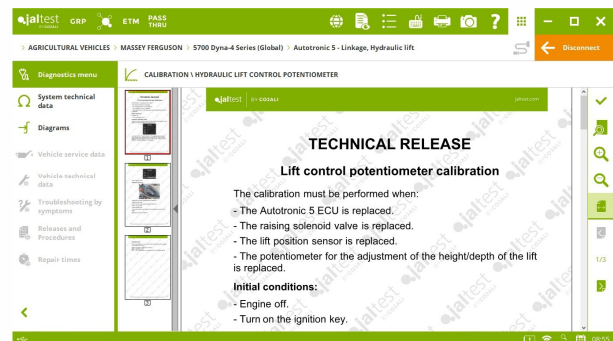
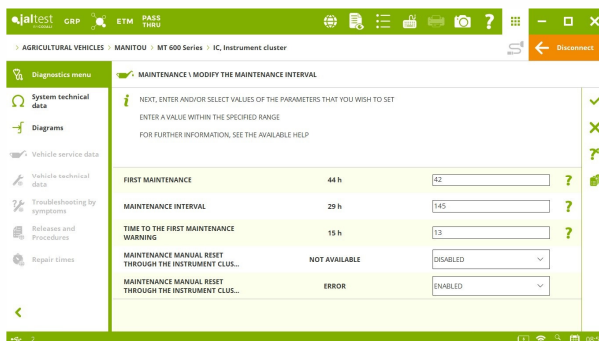
MANITOU

IC instrument cluster, maintenance interval modification and reset.

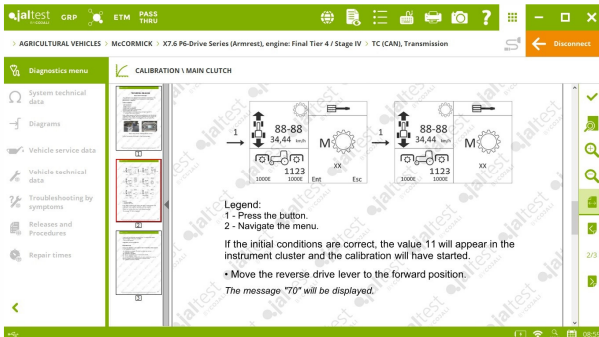
MC central computer, overload limit calibration.

MASSEY FERGUSON

Autotronic 5- Linkage hydraulic lift, rear lift calibration and control potentiometer calibration.



McCormick



EHR instrument cluster and hydraulic lift, parameter modification.

TC transmission, power take-off calibration and Powershift clutch calibration, among others.

NEW HOLLAND

⊕ **UCM 1**, **UCM 2** and **UCM3** electronic control modules of harvest system.

TCM CVT/TCU 1 transmission, parameters such as standardisation type.

VALTRA

EHR hydraulic lift, rear lift calibration and control potentiometer calibration.

ENGINE CONTROL SYSTEM AND EXHAUST GAS AFTERTREATMENT SYSTEM

CATERPILLAR

Models with **C-9.3**, **C-13** and **C-15** engines and **ARD** device, regeneration for cleaning the amount of ash in the Diesel Particulate Filter.

SCR/DEF exhaust gas aftertreatment system, system precision test.

DEUTZ

EMR4 - EDC 17 CV52 engine control system, AdBlue/DEF dosing.

⊕ **EMR5 - EDC MD1** engine control system.

DOOSAN

KIOTI, MAHINDRA, MASSEY FERGUSON, etc. brands.

⊕ **DCU** exhaust gas aftertreatment system.

DL02/DL03 engine control system, desulphurisation process.

IVECO-FPT

CASE IH, NEW HOLLAND, STEYR, etc. brands.

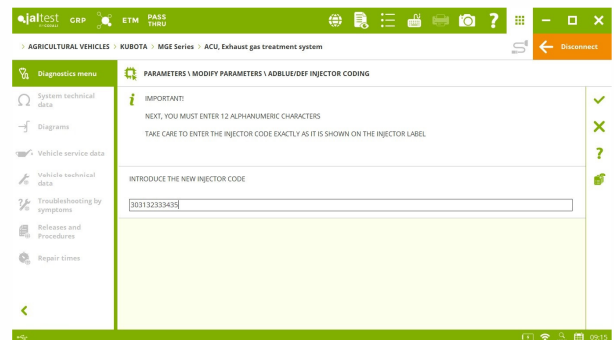
EDC MD1 engine control system, AdBlue/DEF dosing system checks and system reset after replacing components such as the crankcase pressure sensor, the intake throttle valve, the AdBlue/DEF tank, etc.

KUBOTA

BCS, BELARUS-MTC, DIECI, MERLO, PASQUALI, etc. brands.

E-CDIS engine control system, Pressure Relieve Valve reset.

ACU exhaust gas aftertreatment system, AdBlue/DEF tank heating valve activation, AdBlue/DEF circulation test, etc.



PERKINS

ISEKI, LANDINI, LINDNER, URSUS, WEIDERMANN, etc. brands.

Control system of **854E** and **854F** engines, soot load reset and Diesel Particulate Filter replacement.

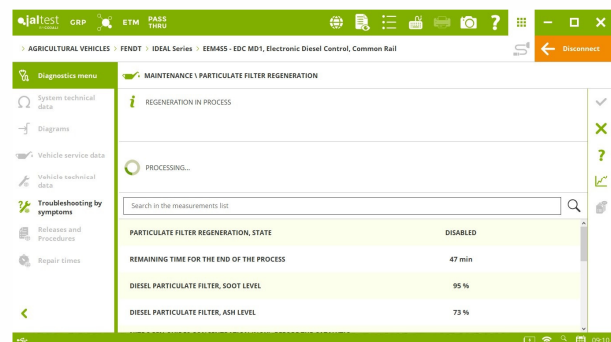
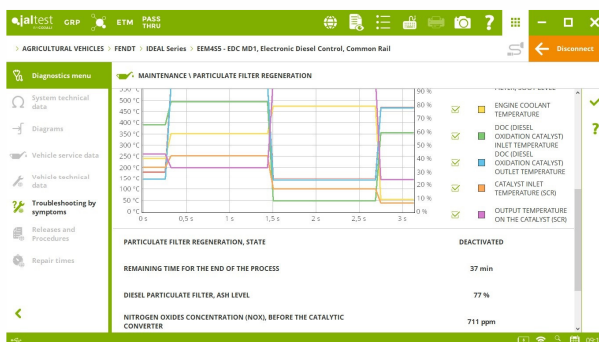
Control system of 1204E engines, fuel pump calibration.

SISU / AGCO Power

CHALLENGER, DEUTZ-FAHR, FENDT, JCB, LAVERDA, VALTRA, etc. brands.

EEM4 engine control system, injector coding in 3-cylinder engines and Pressure Relief Valve reset.

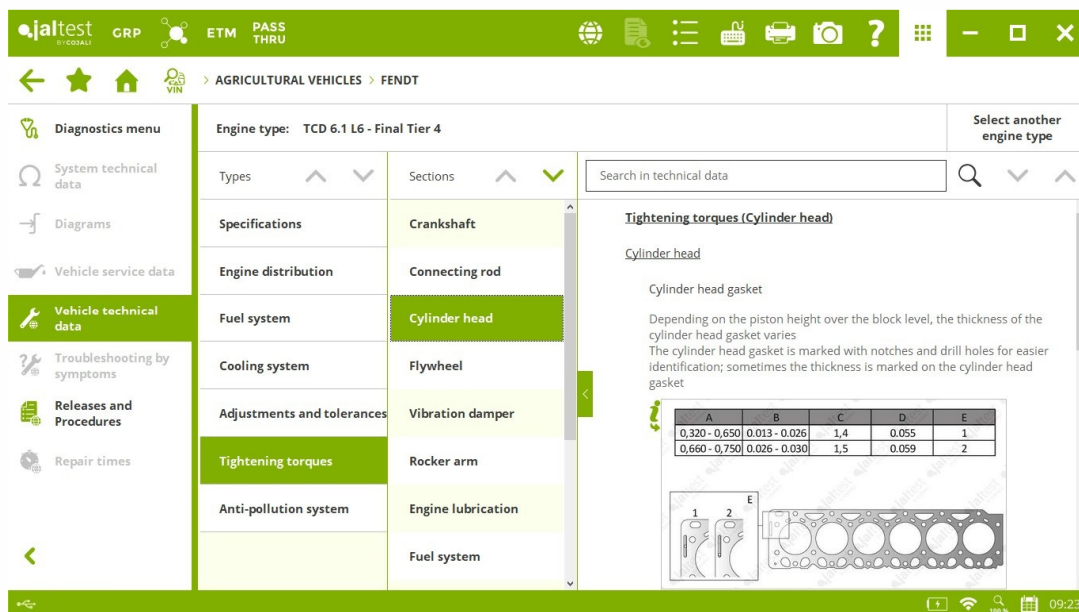
⊕ **EEM4S5-MD1** engine control system.



TECHNICAL INFORMATION

Technical and maintenance data of the vehicle

Engine technical data in CASE iH, CLAAS, FENDT, NEW HOLLAND and VALTRA.

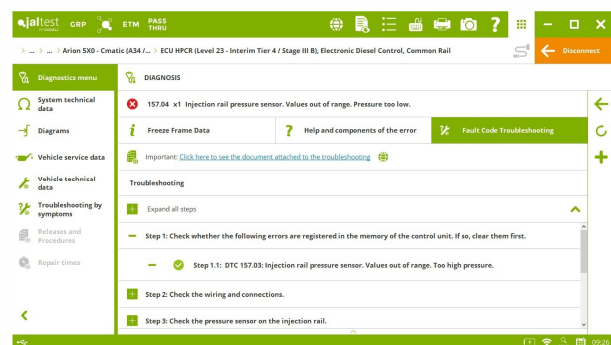
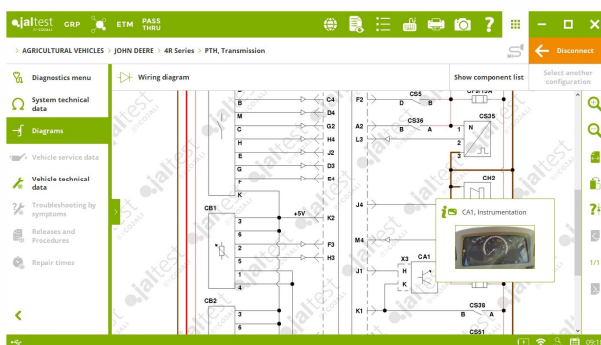


Wiring diagrams and technical information

Wiring diagrams and technical information updated on systems of brands such as CASE iH, CLAAS, DEUTZ-FAHR, FENDT, HÜRLIMAN, JOHN DEERE, LAMBORGHINI, MANITOU, NEW HOLLAND, SAME, STEYR and VALTRA.

Troubleshooting guides and procedures

Troubleshooting guides and procedures in CLAAS, JOHN DEERE, MAZZOTI, etc.



System Display

System Display in the most important systems of numerous brands.

The screenshot displays the 'SYSTEM DISPLAY \ Fuel system' interface. The top navigation bar includes 'jaltest by COEMU', 'GRP', 'ETM', and 'PASS THRU'. The breadcrumb trail shows 'AGRICULTURAL VEHICLES > MANITOU > MT 400 Series > E-CDIS - SYSTEM DISPLAY'. A 'Disconnect' button is visible in the top right corner.

The main area features a schematic diagram of a fuel system with several gauges and data points:

- INJECTED FUEL AMOUNT:** 858 mm³
- Temperature:** 158.00 °C
- Pressure Gauges:** Three gauges at the top showing values 00300, 143000, and 49000.
- Engine RPM Gauge:** Located at the bottom left, showing 14200 rpm.

A left-hand 'Diagnostics menu' lists various options: System technical data, Diagrams, Vehicle service data, Vehicle technical data, Troubleshooting by symptoms, Releases and Procedures, and Repair times. The bottom status bar shows connectivity icons and the time 09:22.