



INNOVATIONS 20.2

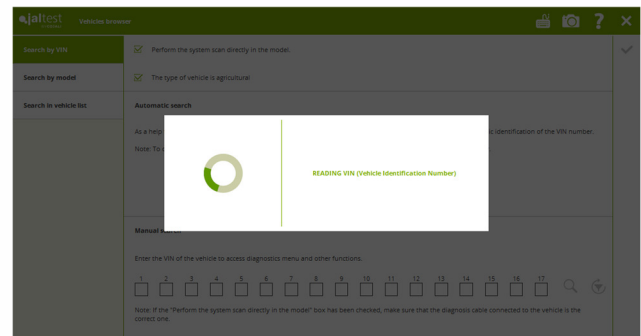
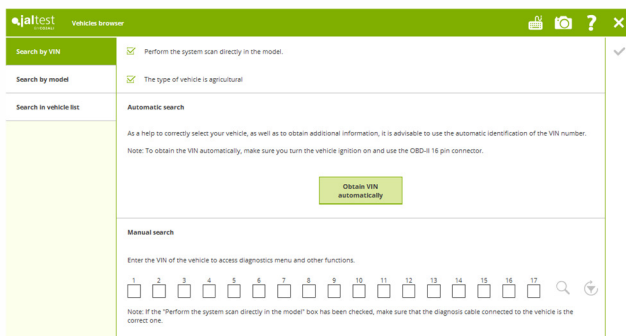
SOFTWARE INNOVATIONS

The new software version **Jaltest 20.2** once again offers improvements and innovations that consolidate this tool as a benchmark in **multibrand diagnosis** for commercial, agricultural and OHW (Off-Highway) vehicles.

Next, the most relevant software innovations are shown.

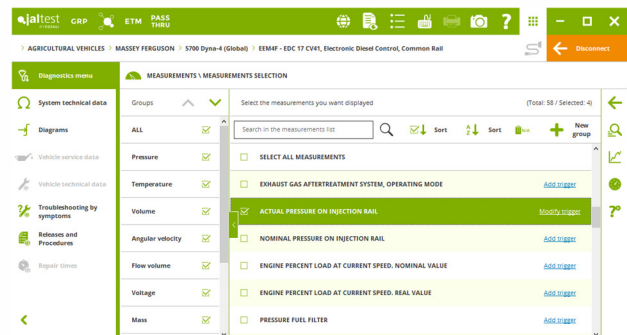
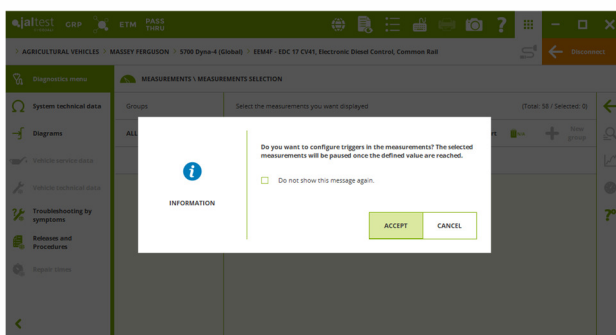
Obtain VIN automatically

In the vehicle browser of the main window of Jaltest, the search by VIN has been divided in: manual search and automatic search. Moreover, the option “Perform the system scan directly in the model” can be checked, which is valid for both searches.

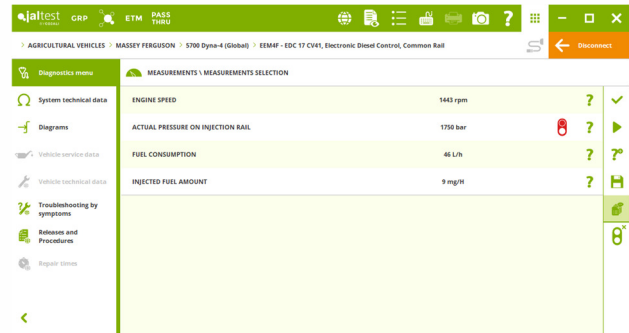
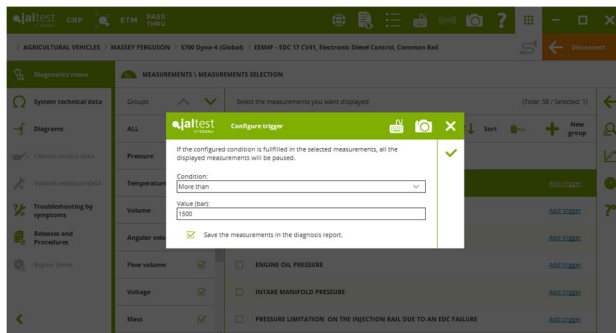


Define triggers in measurements

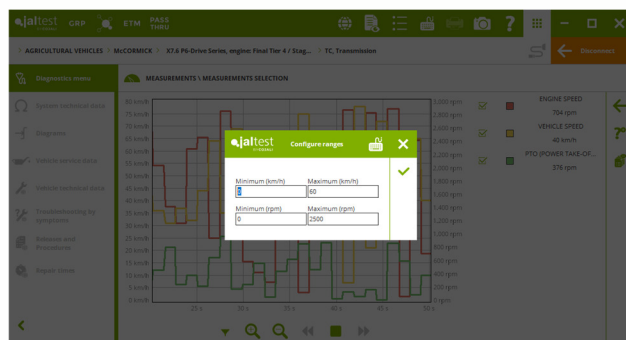
In the measurement selection, triggers can be configured. The selected measurements will be paused once any of the defined values has been reached. The values that can be defined for a measurement are: more than, less than, equal to and different from.



Furthermore, the measurements paused through a trigger or through the corresponding button will save their value in the diagnosis report.



Measurement graph display tools

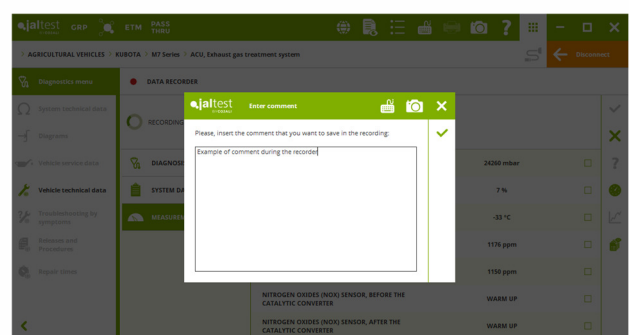
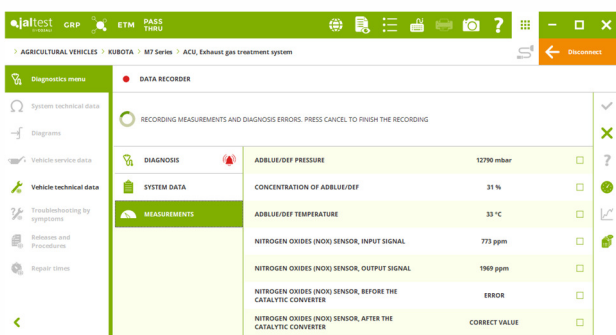


When the measurements are displayed through a graph, it is possible to zoom in them.

Moreover, if all displayed measurements have the same unit, the Y-axis range can be configured by clicking on the “filters” icon on the left.

Improvements in the data recorder

The data recorder has been improved. From now on, the measurements are displayed during the recording and, in addition, triggers can be used to pause the test or to write comments at any moment during the recording. Furthermore, the measurements can be graphed and displayed with instruments.



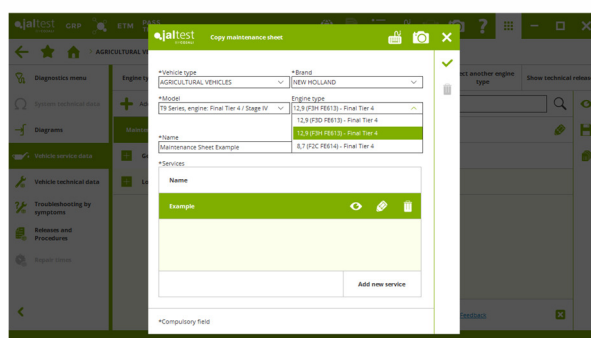
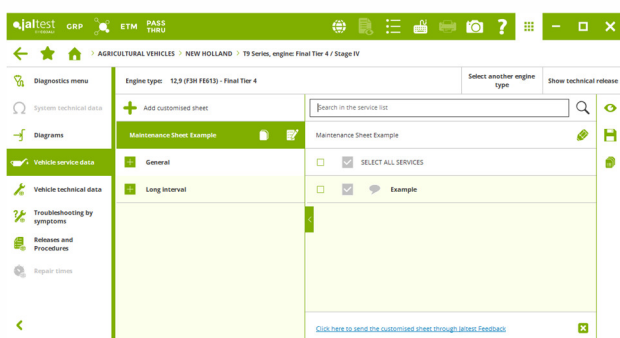
In the data playback, it is possible to navigate directly to the comments defined during the recording. The comment can be read in the information panel at the bottom.

System Display in functions

The image shows the measurements represented in a System Display during the particulate filter regeneration in a Fendt vehicle. The user will be able to evaluate the exhaust gas system in an easy and intuitive way during the test.

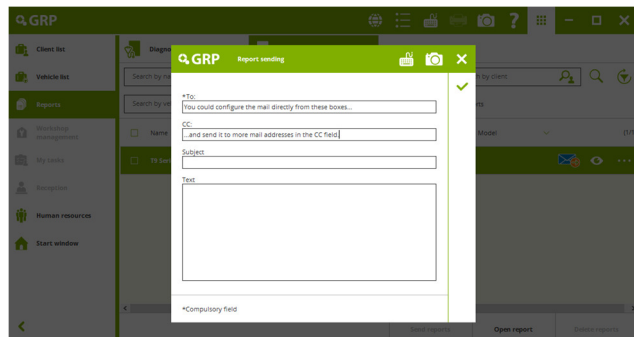
Improvements in vehicle maintenance data

A search filter has been added in the display form of the vehicle maintenance data. Moreover, from now on, the customised maintenance sheets can be copied to other models synchronising the information in the GRP Synchro and GRP Enterprise databases.



GRP

Report sending to an email address

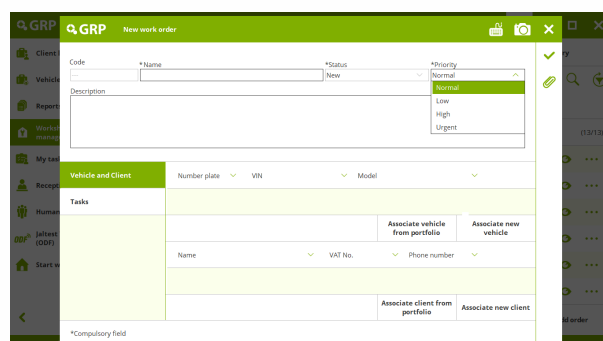


In the last version, the report sending to a customised email address in the configuration menu was presented and, in this version, this functionality is improved allowing the configuration of one or several mailing addresses and the body of the email at the same time.

Priority of the work orders

It is possible to establish a priority in the work orders of GRP Enterprise. The priorities can be: normal, low, high and urgent.

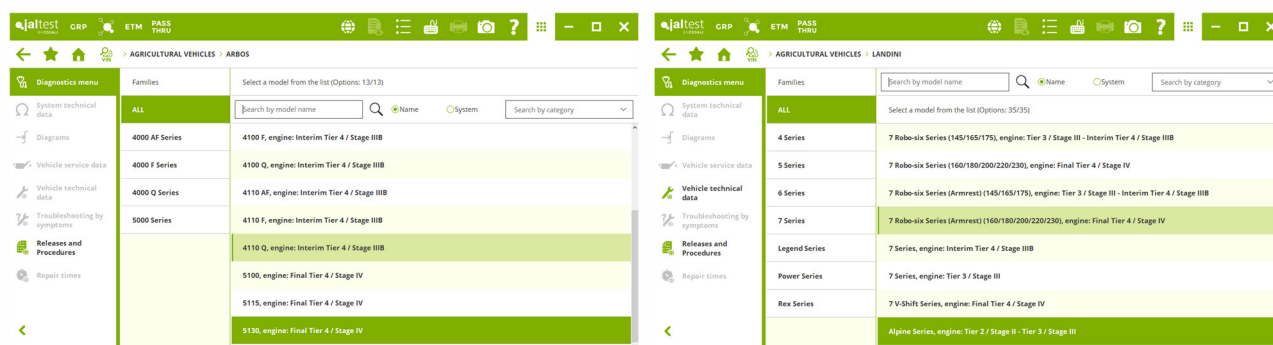
The tasks acquire the priority of the order.



BRANDS AND MODELS

Take into account that this document is only a summary of the most relevant information of this new version. For further information, please visit Jaltest Report

In this version the following new brands in agricultural vehicles have been included: **ARBOS**, **BCS**, **FERRARI**, **GOLDONI**, **PASQUALI** and **ROSTSELMASH**. New models in Jaltest are listed below.



DEUTZ-FAHR

Agrovector Series

FENDT

200 Vario Series, engine: Final Tier 4/ Stage IV

1000 Vario Series, engine: Final Tier 4/ Stage IV

LANDINI

4D Series

Landforce Series

Landpower Series, engine: Tier 2 / Stage II

7 V-Shift Series

7 Robo-six Series

7 Robo-shift Series

6C Series

5H Series (2017)

Rex 4 Series (GE, GB)

MASSEY FERGUSON

5700 Dyna-4 (Global)

McCORMICK

X8.6 VT-Drive Series

X7.4 VT-Drive

X7.6 P6-Drive

X7.4 P6-Drive

X7.4-7.6 PS-Drive

X5 Series (20/30/40/50)

X4m Series (30/40/50)

X4 Series (F, V, XL)

X4 Series (GE, GB)

NEW HOLLAND

CX5000 Series, engine: Final Tier 4 / Stage IV

CX6000 Series, engine: Final Tier 4 / Stage IV

T7 Series - 18/19x6 Power Command (Armrest), engine: Tier 5 / Stage V

CX Series, engine: Tier 5 / Stage V

CX5000 Series, engine: Tier 5 / Stage V

CX6000 Series, engine: Tier 5 / Stage V

VALTRA

More than 40 models in this brand have been included.

A 104 (AC71.5)

N 174D (AC34.5)

N 154EV (AC35.5)

T 254H (AC36.51)

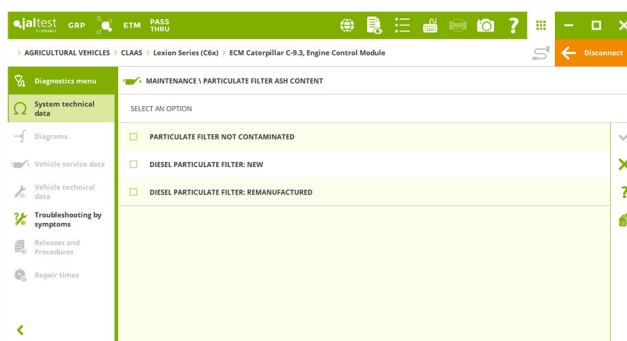
And much more...

DIAGNOSIS AND SYSTEMS

Take into account that this document is only a summary of the most relevant information of this new version. For further information, please visit Jaltest Report.

CLAAS

ECM Caterpillar C-9.3 and C13 engine control system, reset of the DPF particulate filter ash content.



DEUTZ-FAHR

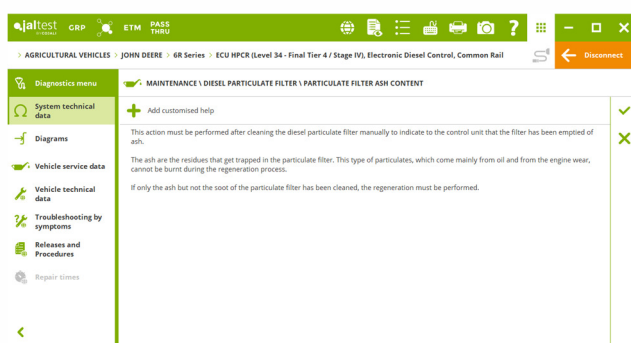
EMR4 - EDC 17 CV52 Deutz engine control system, injector coding.

EMR 3 - EDC 16 UC40 Deutz engine control system, Pressure Relief Valve (PRV) reset, manual and automatic procedure.

FENDT

EMR 4 - EDC 17 CV56 Deutz engine control system, Pressure Relief Valve (PRV) reset.

JOHN DEERE



Bosch control system of **Yanmar engines**, replacement of Diesel Oxidation Catalyst (DOC) and the DPF particulate filter.

EDC (level 21, 23, 33 and 34) engine control systems, reset of the DPF particulate filter ash content.

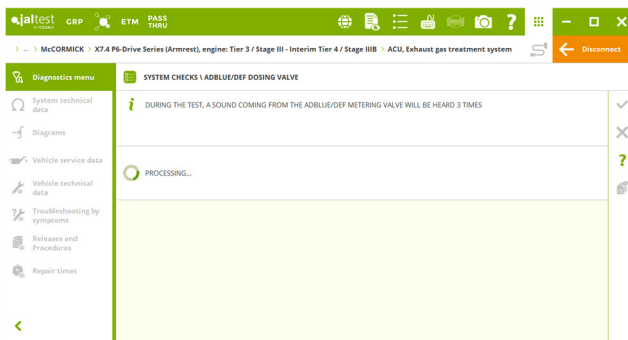
HCU hydraulic lift, rear lift calibration in **7020 Series** models.

PTH transmission, calibration and parameter setting in **3 and 4 Series** models.

KUBOTA

VCU1 Central Computer, parameter setting and accelerator pedal calibration. **VCU2** also includes calibrations.

LANDINI & McCORMICK (ARGO)



ACU exhaust gas aftertreatment system, check of the dosing pump and AdBlue/DEF dosing valve.

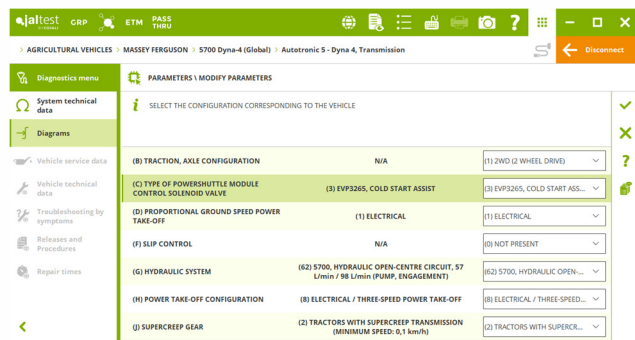
New systems: **TC** transmission, instrument cluster, **ARM** armrest controller and **CC** cab module.

MASSEY FERGUSON

Autotronic 5 – Dyna transmission, parameter modification and calibration.

Autotronic 5 – Linkage hydraulic lift, parameter modification.

DCC instrument cluster, calibrations of the accelerator pedal, clutch pedal and the gearshift lever.



NEW HOLLAND

MD1 Tier 5/Stage V engine control System, checks and maintenances.

VALTRA

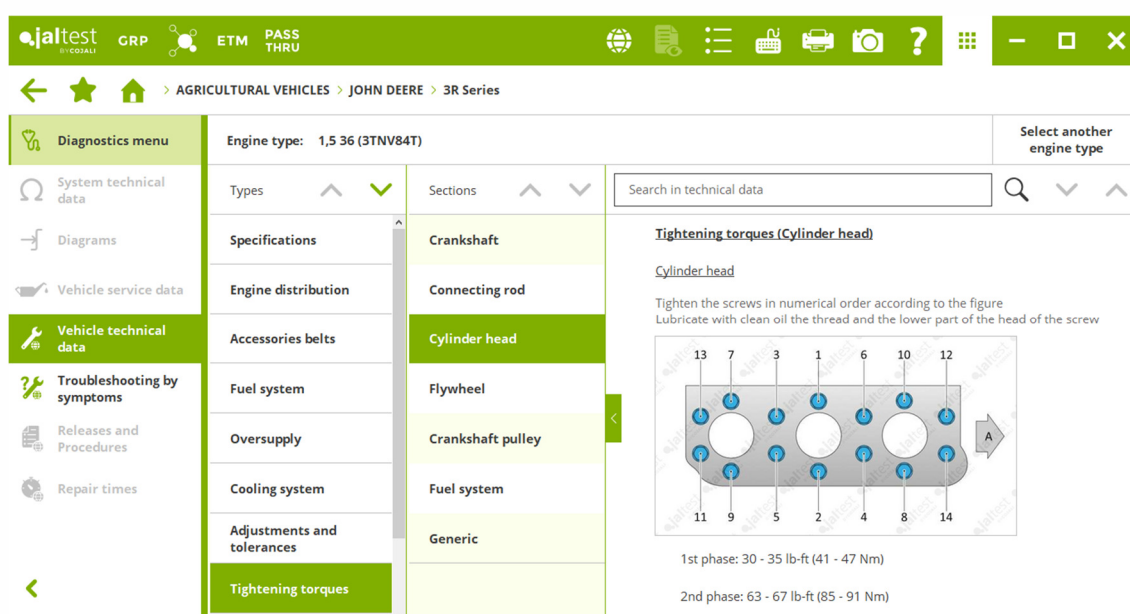
AC71.5 maintenance system, system checks and reset of the instrument cluster intervals and the engine control system.

TECHNICAL INFORMATION

Take into account that this document is only a summary of the most relevant information of this new version. For further information, please visit Jaltest Report.

Technical and maintenance data of the vehicle

Yanmar engine technical data.



Engine type: 1,5 36 (3TNV84T)

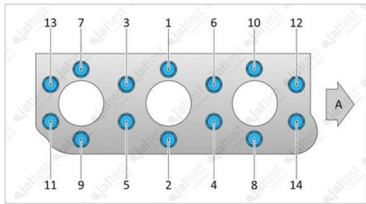
Sections:

- Crankshaft
- Connecting rod
- Cylinder head**
- Flywheel
- Crankshaft pulley
- Fuel system
- Generic

Tightening torques (Cylinder head)

Cylinder head

Tighten the screws in numerical order according to the figure
Lubricate with clean oil the thread and the lower part of the head of the screw



1st phase: 30 - 35 lb-ft (41 - 47 Nm)
2nd phase: 63 - 67 lb-ft (85 - 91 Nm)

Wiring diagrams and technical information

Wiring diagrams and updated technical information in systems of all agricultural vehicle brands.

Troubleshooting guides and procedures

Troubleshooting guides and procedures in **JOHN DEERE**.

System Display

System Display in the most important systems of numerous brands.

