



jaltest
AGV
AGRICULTURAL VEHICLES

INNOVATIONS 20.1

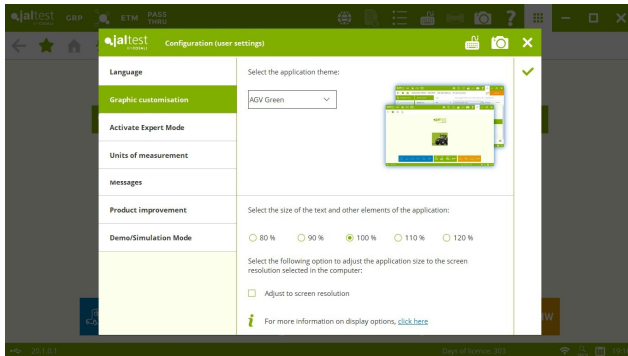
SOFTWARE INNOVATIONS

The new software version **Jaltest 20.1** once again offers more improvements and innovations that consolidate this tool as a benchmark in **multibrand diagnosis** for commercial, agricultural and OHW (Off-Highway) vehicles.

This version shows the **new graphic interface of Jaltest**, characterised by new improved and modern design lines, more legible content and more direct accessibility. This improvement in the visualisation of the content means a great advantage for Jaltest users who can now find and manage the information in an easier and more intuitive way. Apart from these graphic changes, both the runtimes and installation times have been improved, improving in this way its speed.



Next, some examples of displays and aspects of the application, with a considerable improvement regarding the graphic interface, are shown.

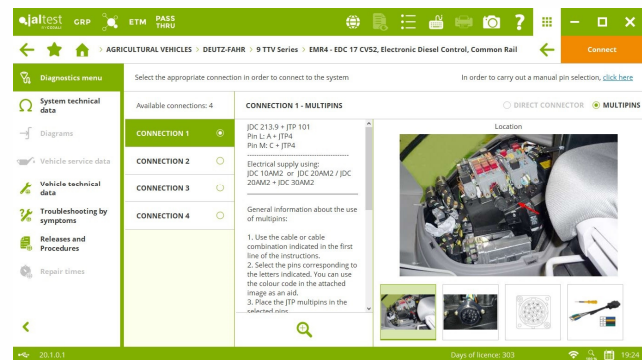


Graphic customisation.

Configuration of the screen resolution, text size and other elements of the application. Option to adjust the application size to the resolution of the selected screen in the PC.

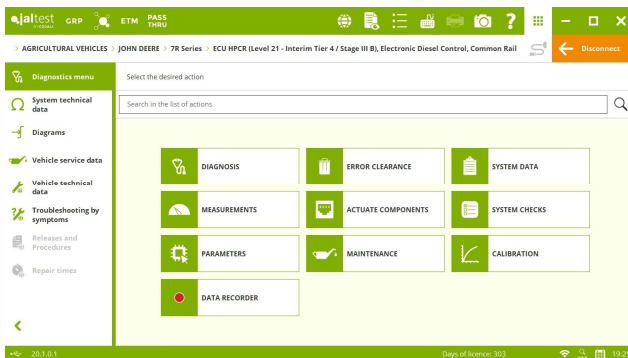
Connection selection.

The connections associated to a system are listed at the left, the connection instructions remain always visible, navigating through the images is easier, etc.



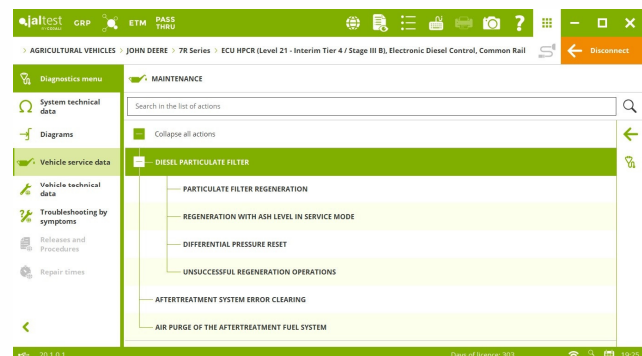
Main menu of a system.

Classification of the main types of actions when connecting to a system, which allow you to know quickly the coverage of a system. Improvement of the action searcher.



System actions in tree diagram.

System actions organised in tree diagram and actions grouped together in folders. The "DIAGNOSIS" function is always available on the right bar through the button with the corresponding icon.



Other innovations

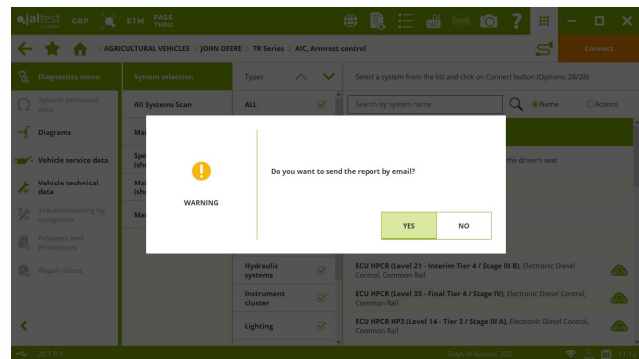
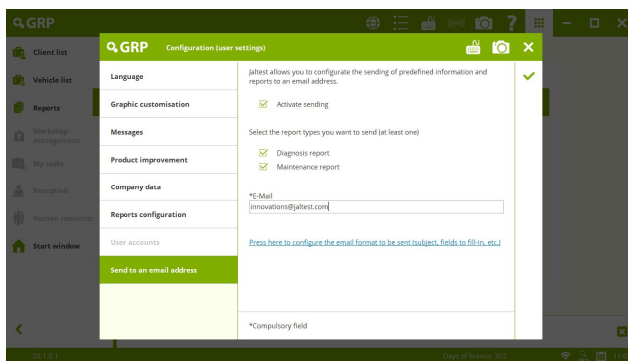
Other functionalities of the version are listed below:

- **Countdown timer** in procedure steps and troubleshooting guides.
- **Search filter** in the measurement list of a step of an action.
- **Component filter** in system technical data by configuration of wiring diagram.

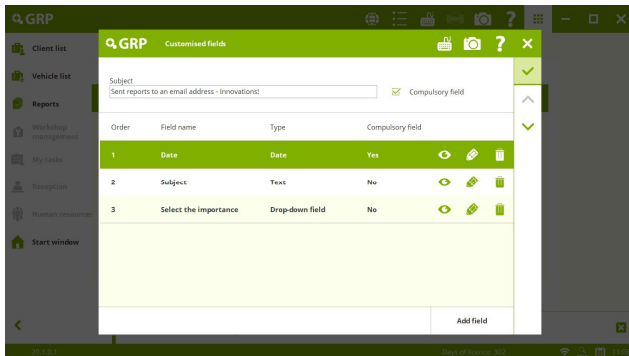
GRP

Sending of reports to an email address

Jaltest allows you to configure the sending of predefined information and reports to an email address through the “**Send to an email address**” function available in the “**Configuration**” menu of GRP. Once the sending has been activated, the program will suggest this possibility when generating a report. The report will be sent by an email with the configured format (subject, fields of the body of the email, etc.).



A new column for the sending management has also been included in the GRP report list. The user will be able to send reports marked as “*Pending to be sent*” or to resend a report.

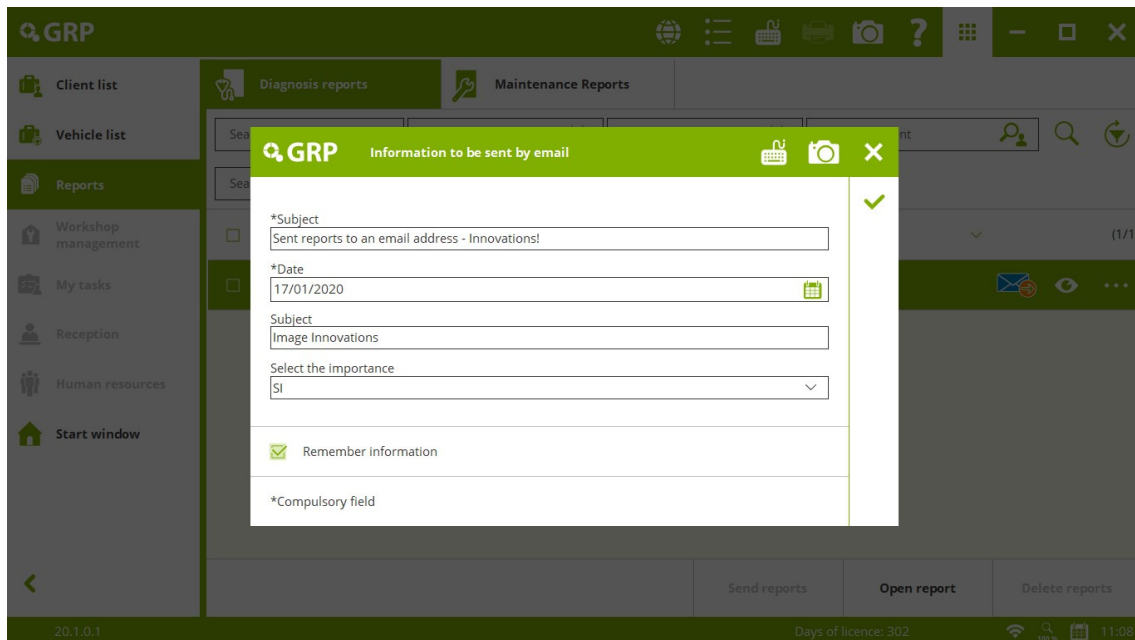


The user can customise as many fields as desired and the email subject, as well as define if they are compulsory input data or not. The field types can be as following:

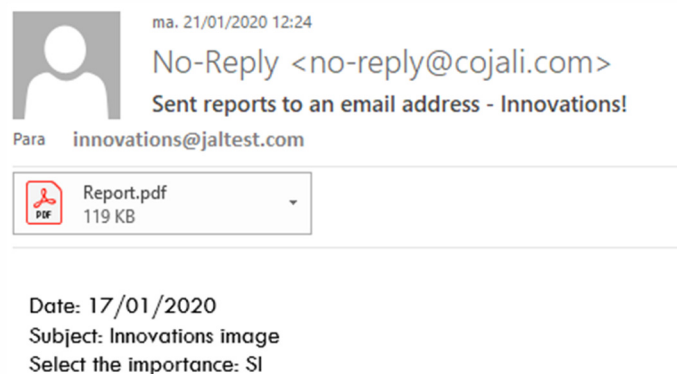
- Text
- Date
- Drop-down field

The image shows an example with three fields.

Example, sending of a report with Jaltest:



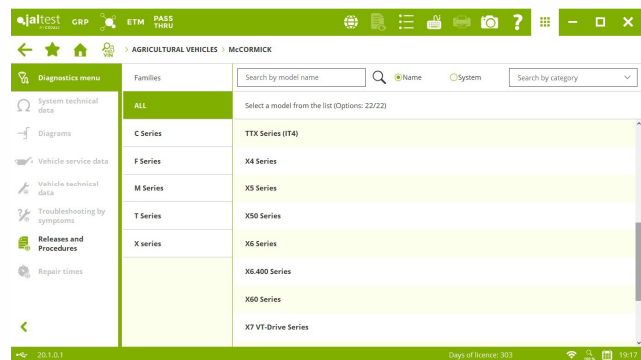
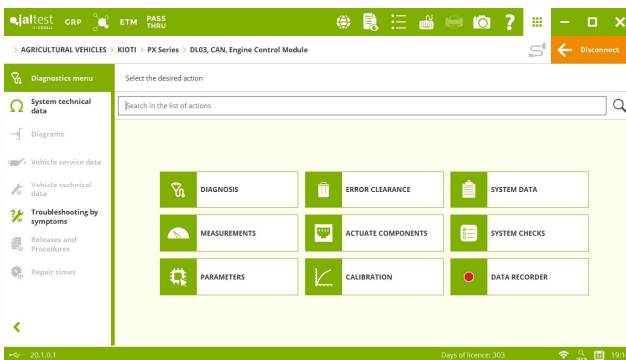
Received email



BRANDS AND MODELS

Take into account that this document is only a summary of the most relevant information of this new version. For further information, please visit Jaltest Report.

In this version 3 new brands of agricultural vehicles have been included: **BOBCAT**, **ISEKI** and **KIOTI**. New models in Jaltest are listed below.



CHALLENGER

MT 800E Series

CASE IH

JX U

CLAAS

Torion Series, engine: Final Tier 4/Stage IV

DEUTZ-FAHR

6G Series

FENDT

300 Vario Series (Power)

500 Vario Series (Power)

Fastrac 8000 Series

KUBOTA

M4 Series

M5 Series and M5N Series

M6 Series

LANDINI

4 Series, including the new Rex 4 Series

5 Series

6H Series

MASSEY FERGUSON

3700 Series

McCORMICK

X Series models: X4, X5, X6 and X6.400

VALTRA

T 234D (AC34.5)

WEIDERMANN

T6000 Series

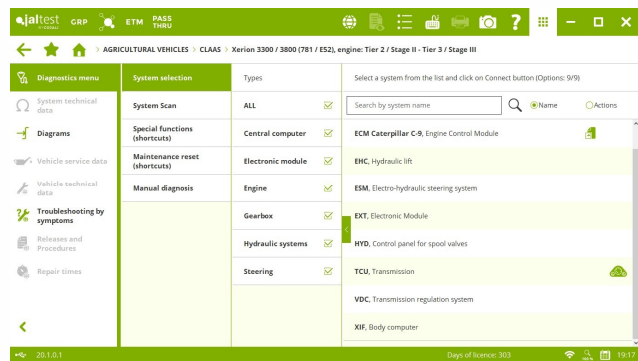
DIAGNOSIS AND SYSTEMS

Take into account that this document is only a summary of the most relevant information of this new version. For further information, please visit Jaltest Report.

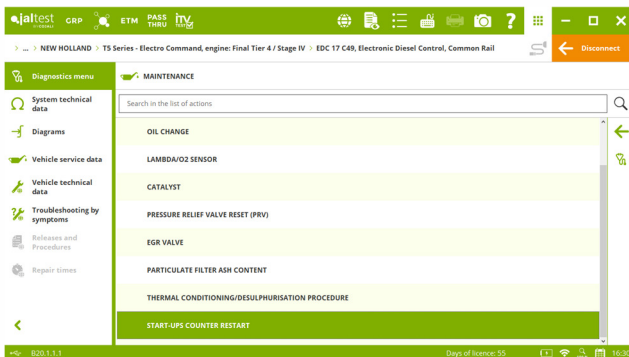
CLAAS

⊕ New systems (8) in the **Xerion 3300/3800 (781/E52) model, Tier 2/Stage II and Tier 3/Stage III engines**. The service reset of XIF central computer is included.

VDC transmission regulation system, inching pedal calibration in **Xerion Series** models.



CNH GROUP



EDC 17 C49 control system of **FPT engines**, new checks of the exhaust gas treatment system (AdBlue/DEF leak control, AdBlue/DEF dosing pump, ect.) and maintenances, such as the start-ups counter reset.

EDC 17 CV41 + Denox 2.2 control system, new maintenances, such as the reset of the Pressure Relief Valve (PRV).

FENDT

EMR4 - EDC 17 CV52 Deutz engine control system, new parameters, such as the configuration of the idle speed rate, Limp Home or constant speed.

EOL 7 vehicle configuration control system, new configuration parameters of the spool valves, front and rear lifts, power take-off, etc. *Configuration available in the virtual terminal with the JDC 500 connector.*

JCB

Calibrations in the Continuously Variable Transmission (CVT) and the FCC central computer in **Fastrac 8000 Series** models.

JOHN DEERE

Bosch control system of **Yanmar engines** in John Deere vehicles, parameters and maintenances.

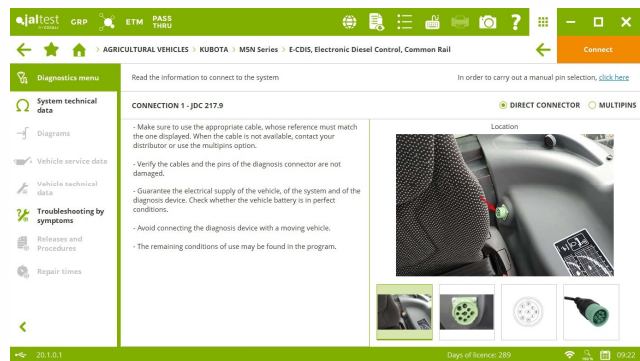
⊕ New systems (6) in the **5R Series** model: **HCC** hydraulic lift, rear power take-off, control systems of **SB** hydraulic auxiliary, etc.

⊕ New systems (3) in the **6R Series** model: **GPM** and **TID** transmission regulation systems, control system of **SCO** hydraulic auxiliary.

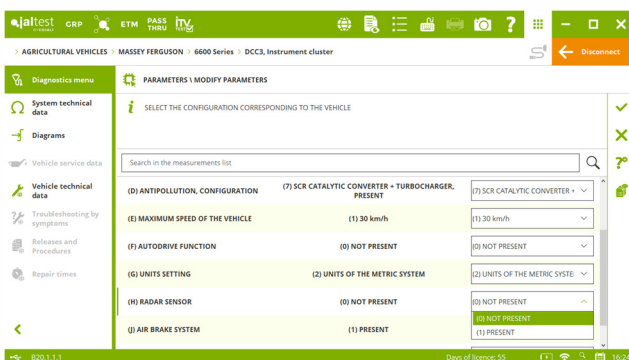
KUBOTA

E-CDIS engine control system connecting from the connector of the tractor cabin, actuations, system checks and parameters.

ACU exhaust gas aftertreatment system, and actuations.



MASSEY FERGUSON



DCC3 instrument cluster and **Autotronic 5** hydraulic lift, system parameter setting.

VALTRA

SUS1 suspension system calibration.

TECHNICAL INFORMATION

Take into account that this document is only a summary of the most important information of this new version. For further information, please visit Jaltest Report.

Maintenance and technical data of the vehicle

17 engine types in **KUBOTA**; 3,3 (V3307), 3,8 (V3800) and 6,1 (V6108) diesel engines.

Wiring diagrams and technical information

Wiring diagrams and technical information in systems of the following brands: **CASE IH, CLAAS, FENDT, JOHN DEERE, NEW HOLLAND, STEYR** and **VALTRA**.

Troubleshooting guides and procedures

Troubleshooting guides and procedures in **JOHN DEERE**.

System Display

System Display in the most important systems of numerous brands.

