



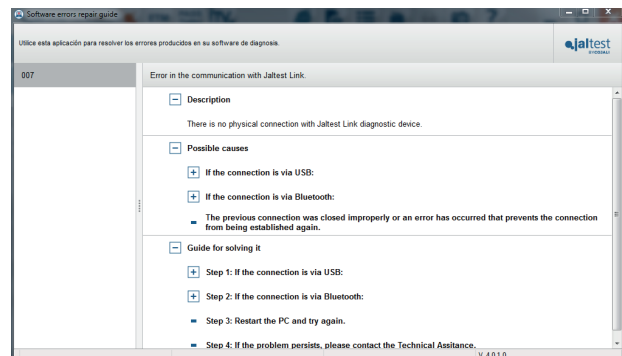
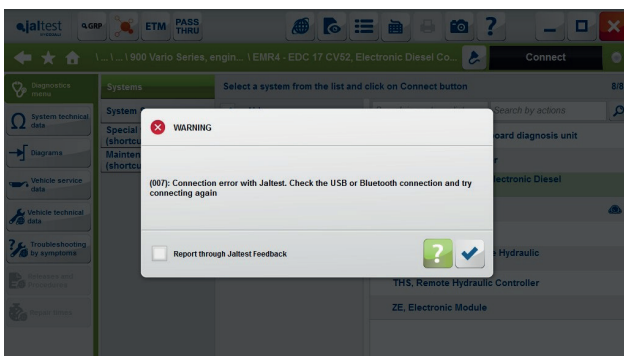
INNOVATIONS 19.1



SOFTWARE INNOVATIONS

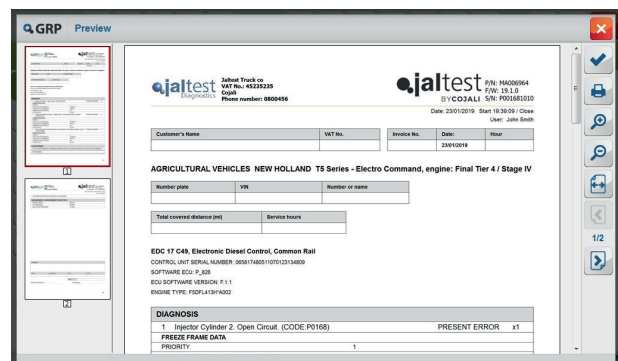
Troubleshooting guides for Software error codes

These guides contain information about the software errors 004, 006, 007, 0022, etc. The description of the error, the possible causes and a step-by-step guide to solve them have been added.



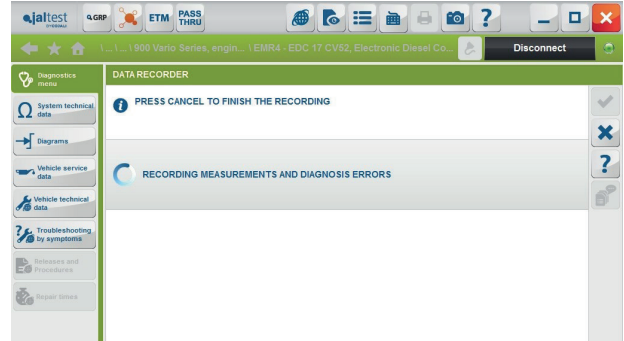
New viewer for PDF reports

The new PDF display format of the diagnosis reports replaces and improves the previous page-by-page display format.



Data recorder and player

This function allows obtaining the diagnosis results (system errors) and the values of up to 24 measurements at most for 30 minutes continuously. The data recorder and player is ideal to evaluate dynamic errors.



Action search function by model



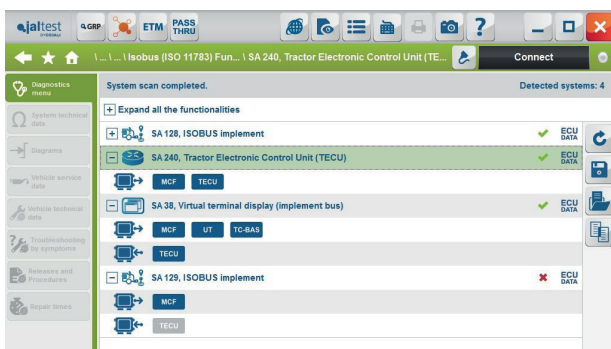
This new filter facilitates the action search by model without connecting in the system.



NEW DIAGNOSIS FUNCTIONS AND SYSTEMS

Take into account that this document is only a summary of the most relevant information of this new version. For further information, please visit Jaltest Report.

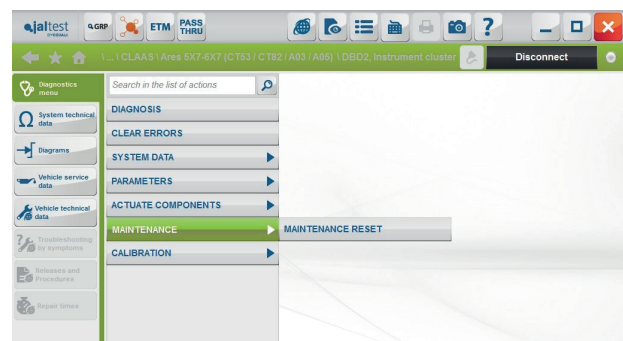
New functionality test in **ISOBUS (11783)**



CLAAS

Lexion models, programming and calibration of the product yield sensors, installation of a new sensor and reset of a sensor acquired as spare part. Wiring diagram configurations for the EHS, SAM, OPM, ATP and YMM systems in Lexion and Tucano Series harvester models, as well as the OPM, ATP and SBM systems in Jaguar Series models.

Ares, Atlas, Arion and Axion models, maintenance reset.



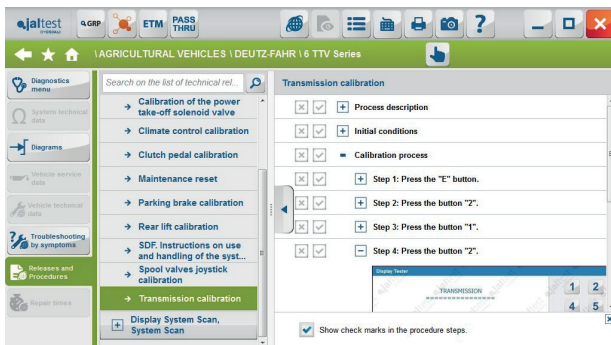
CASE iH

- + New models, Case iH Optum Final Tier 4, Case iH Luxxum, Case iH Magnum (180, 200, 220, 240) Final Tier 4
- + New regulation interface system of the **ENG motor** for the models Steiger, Puma, MXU, Maxxum, Magnum and Axial-Flow.

DEUTZ Engines

EMR4 engine management systems, service regeneration for CRT models in the EDC 17 CV52 system; injector coding, reset of the rail pressure regulation valve and much more in the EDC 17 CV54 system.

DEUTZ-FAHR



- + New harvester models that include advanced diagnosis operations and wiring diagram configurations in different systems such as the rear lift, instrumentation, armrest, etc.

5, 6 and 7 Series models; Agrottron, Agrofarm, calibrations and manual diagnosis.

FENDT

Deutz and **MAN engine** type technical data associated to the Vario Series, Farmer and Favorit models.

JOHN DEERE

- + New harvester models.

6030 Series, 7020 Series and 7030 Series models, vehicle configuration parameters.

- + New **SCC** spool valve control panel in **6R models**.

Increase of technical data related to air conditioning, 34 updated engine types in the section "Liquid capacity and quality".

LAMBORGHINI

Nitro, R3, R4, R6, R7 and R8 models, calibrations and manual diagnosis in multiple systems such as the rear lift, front suspension, power take-off, transmission, etc.

LINDNER

Restructuring of the brand, 16 new models.

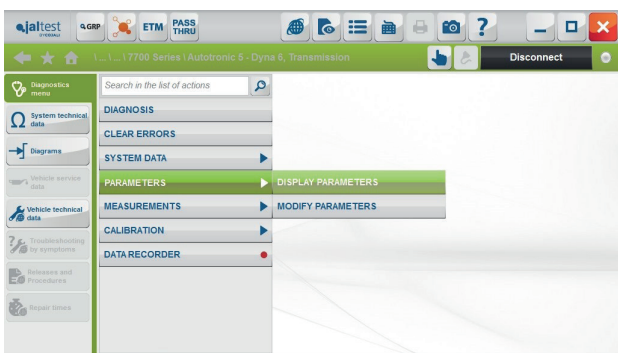
NEW HOLLAND

+ New models T7 AC – CVT Series Final Tier 4.

Interim and Final Tier 4 models, maintenance reset.

Engine management and exhaust aftertreatment system [EDC 17 CV41 + Denox 2.2](#), NOx sensor reset, reset of the rail pressure regulation valve, etc.

MASSEY FERGUSON



[X700 Series models](#), vehicle configuration parameters.

[X400 Series model](#), maintenance services.

[EEM4F-EDC 17 CV41 Final Tier 4](#) engine management system, catalyst cleaning.

SAME

[Fortis, Iron, Diamond, Virtus and Explorer models](#), calibrations and manual diagnosis.